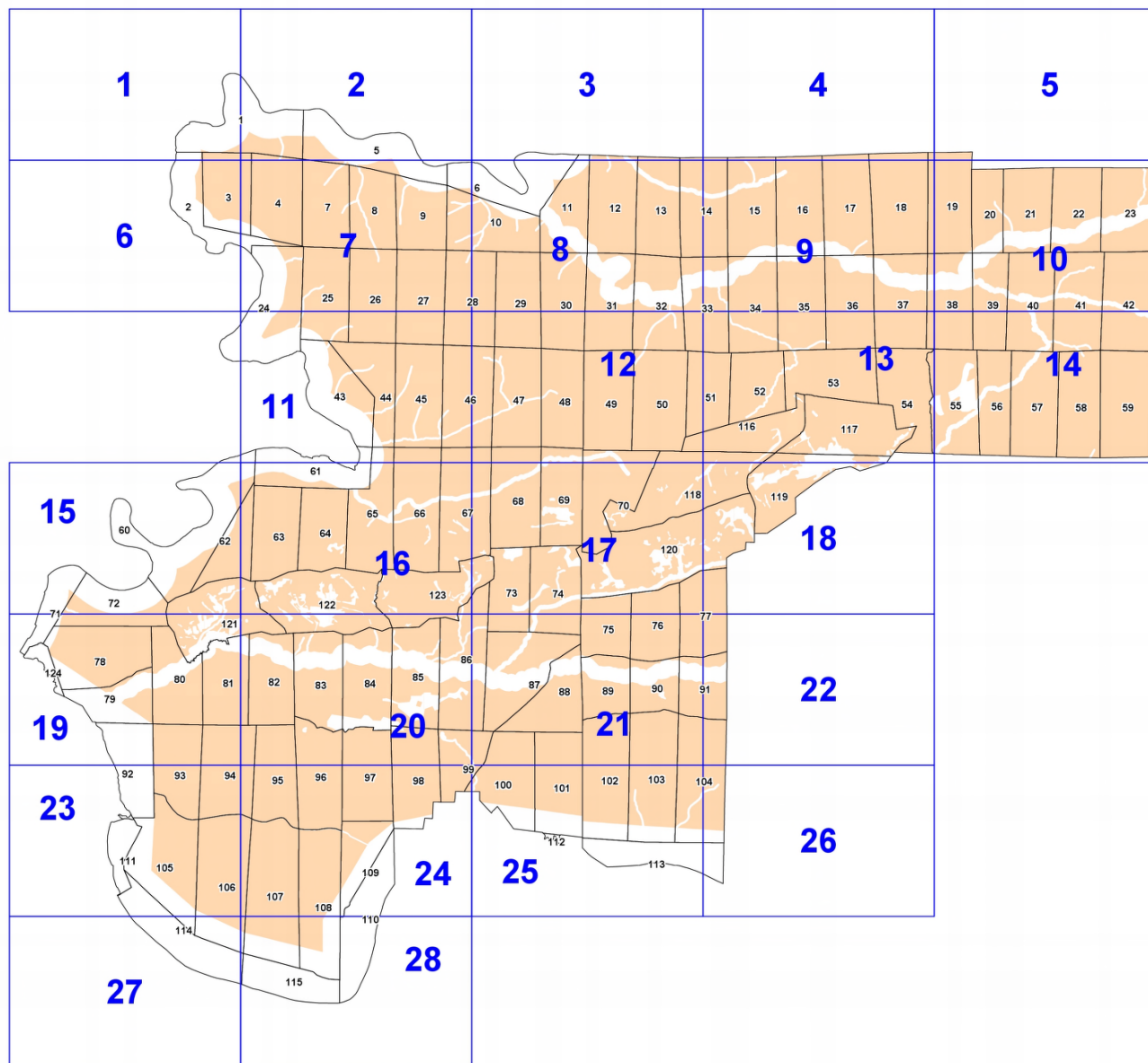


Графическое описание местоположения границ земель,  
на которых располагаются эксплуатационные леса, на территории  
Ангарского участкового лесничества Гремучинского лесничества  
Красноярского края

Приложение № 10 к приказу Рослесхоза  
от 28.05.2024 № 368

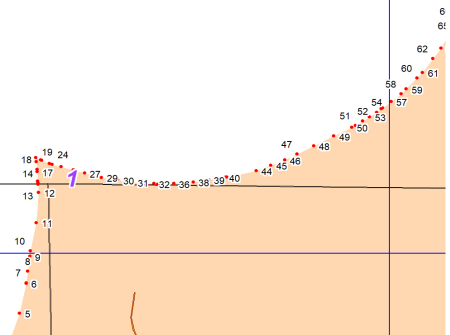


Условные обозначения:

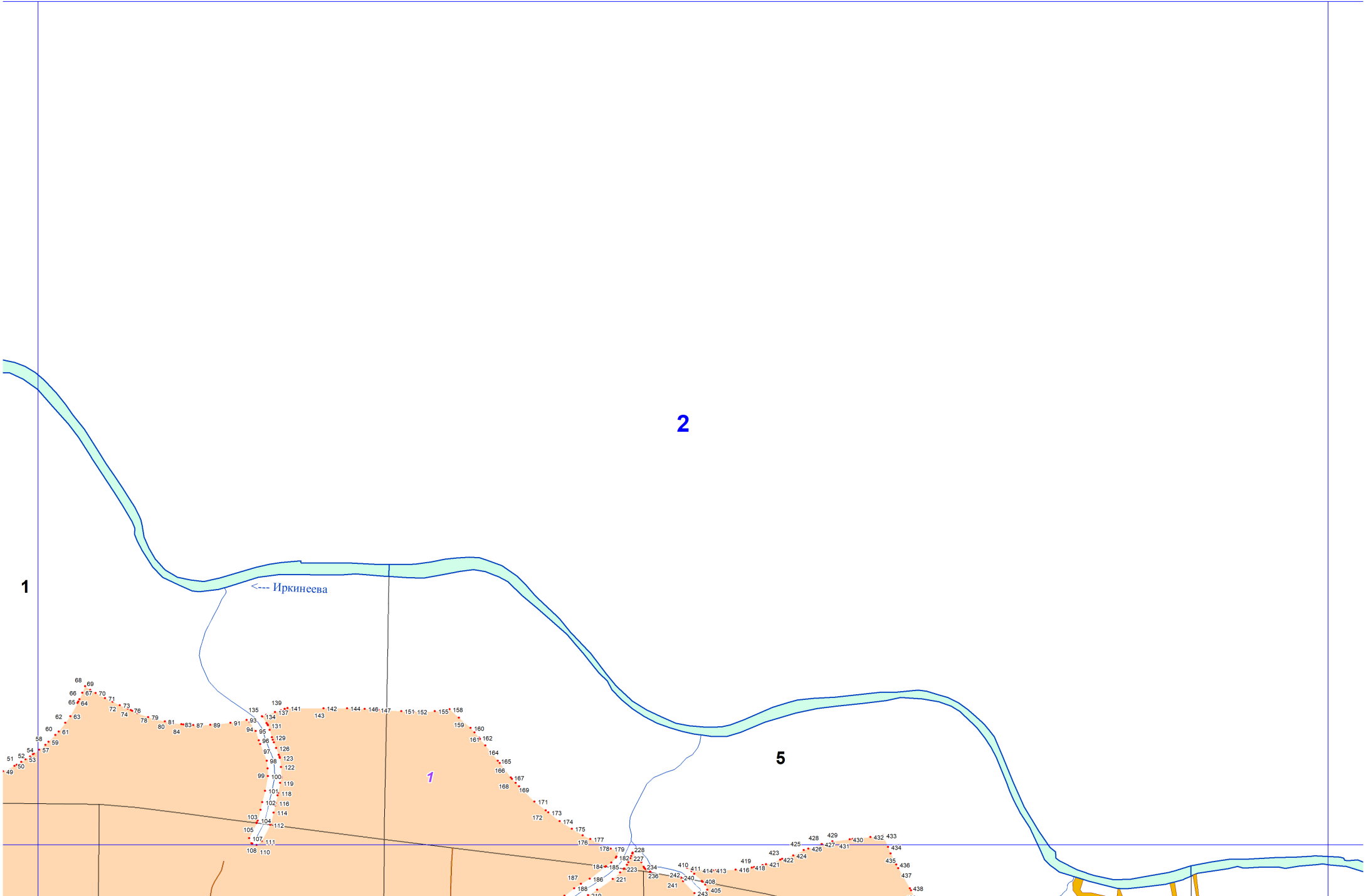
- 1 номера листов
- 3 номера контуров
- 37 номера лесных кварталов
- границы лесных кварталов
- границы листов
- границы эксплуатационных лесов
- 88 номера характерных точек границ объекта

1

1







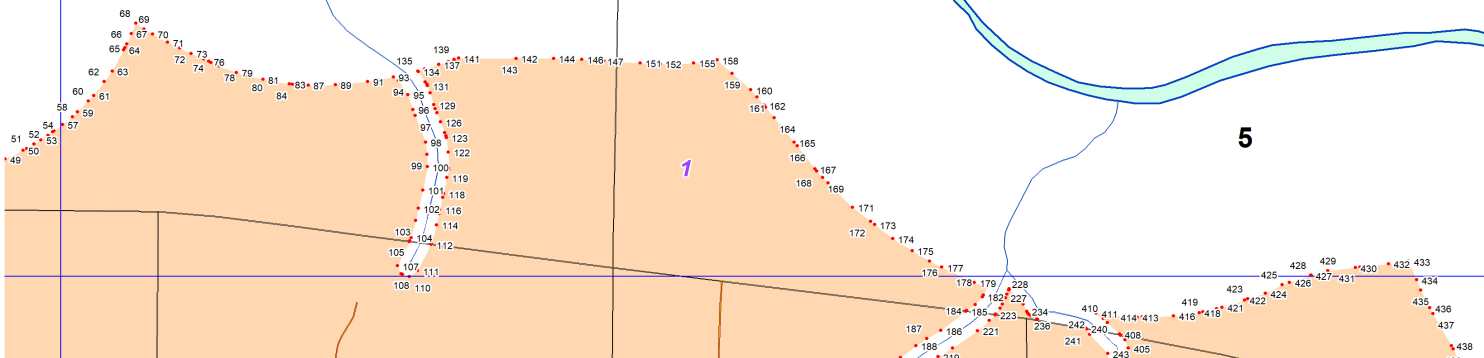
1

2

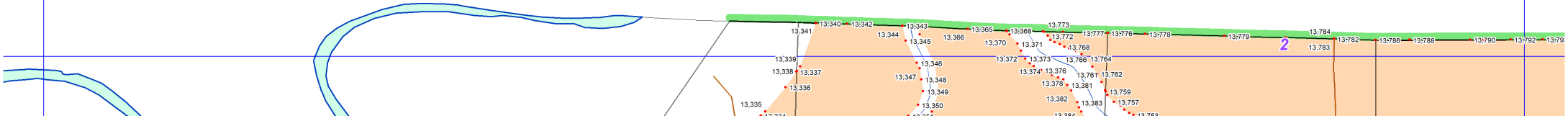
5

<--- Иркинсева

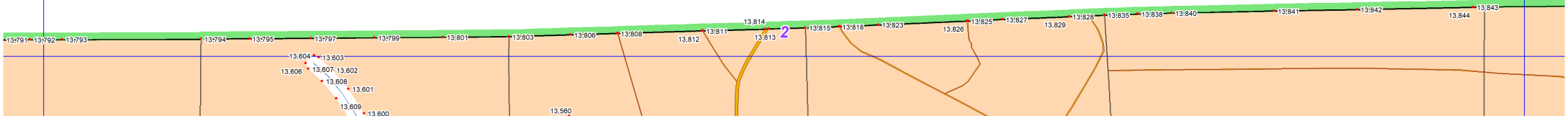
1



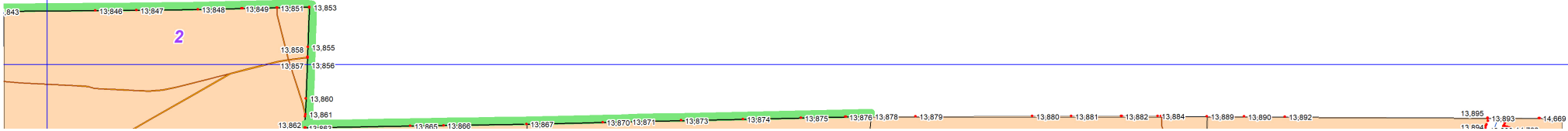
3



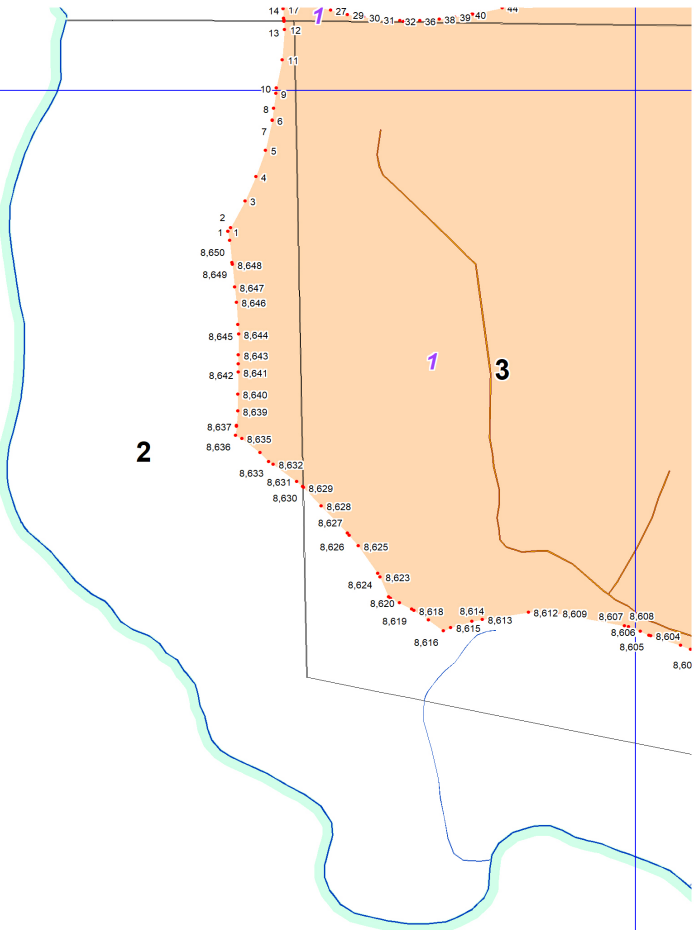
4

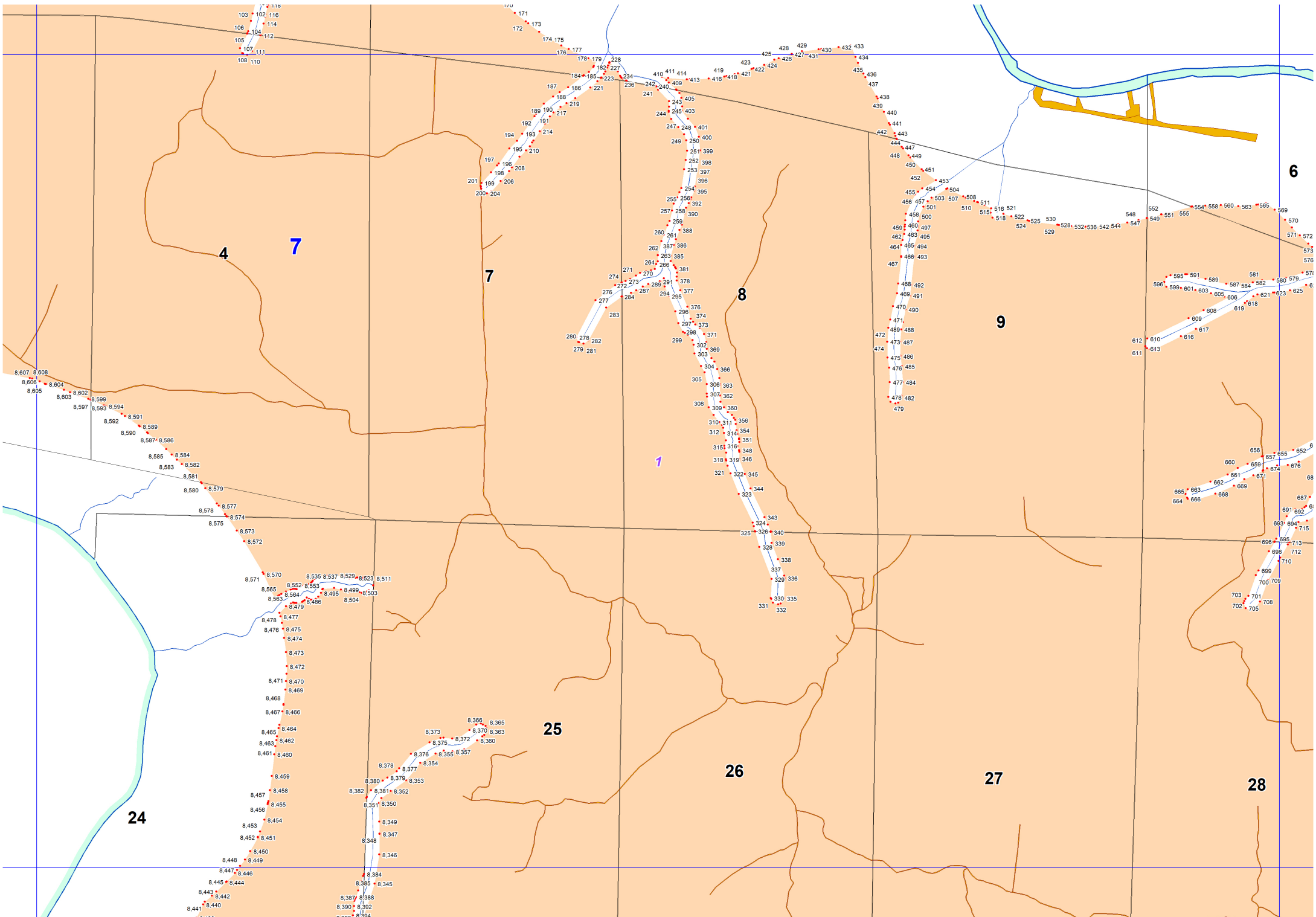


5



6





4

7

7

8

9

24

25

26

27

28

6

1

6

6

6

6

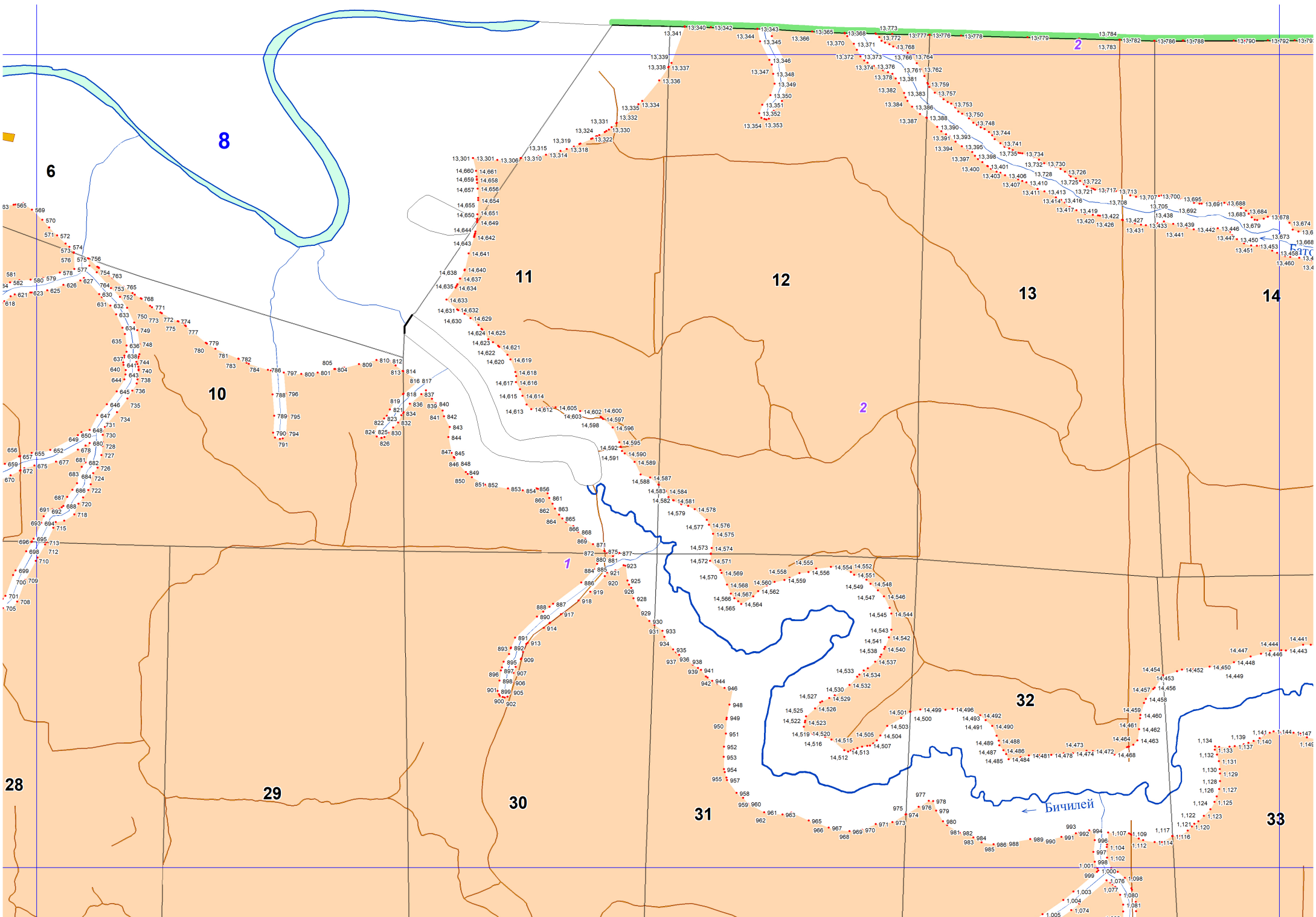
6

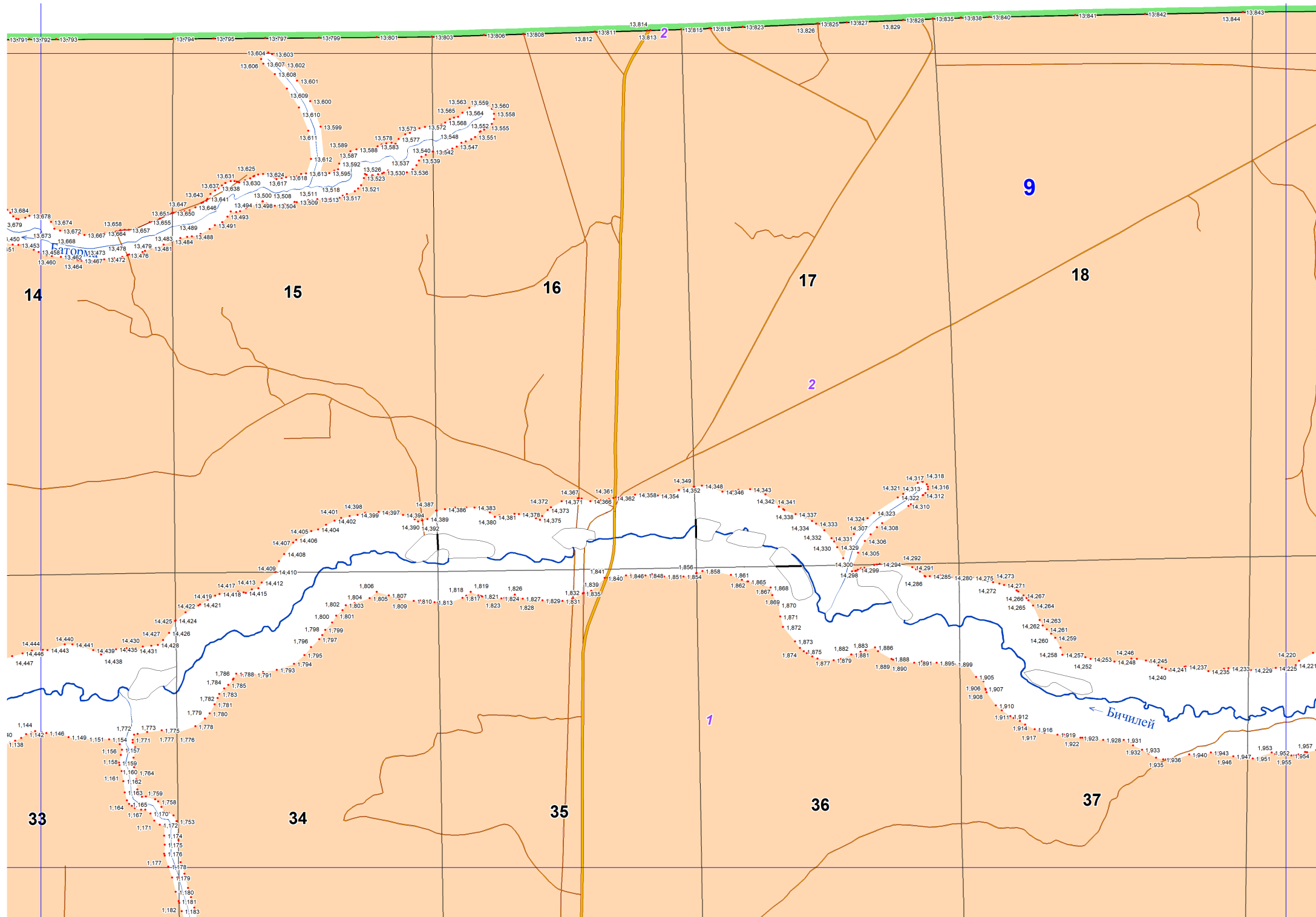
6

6

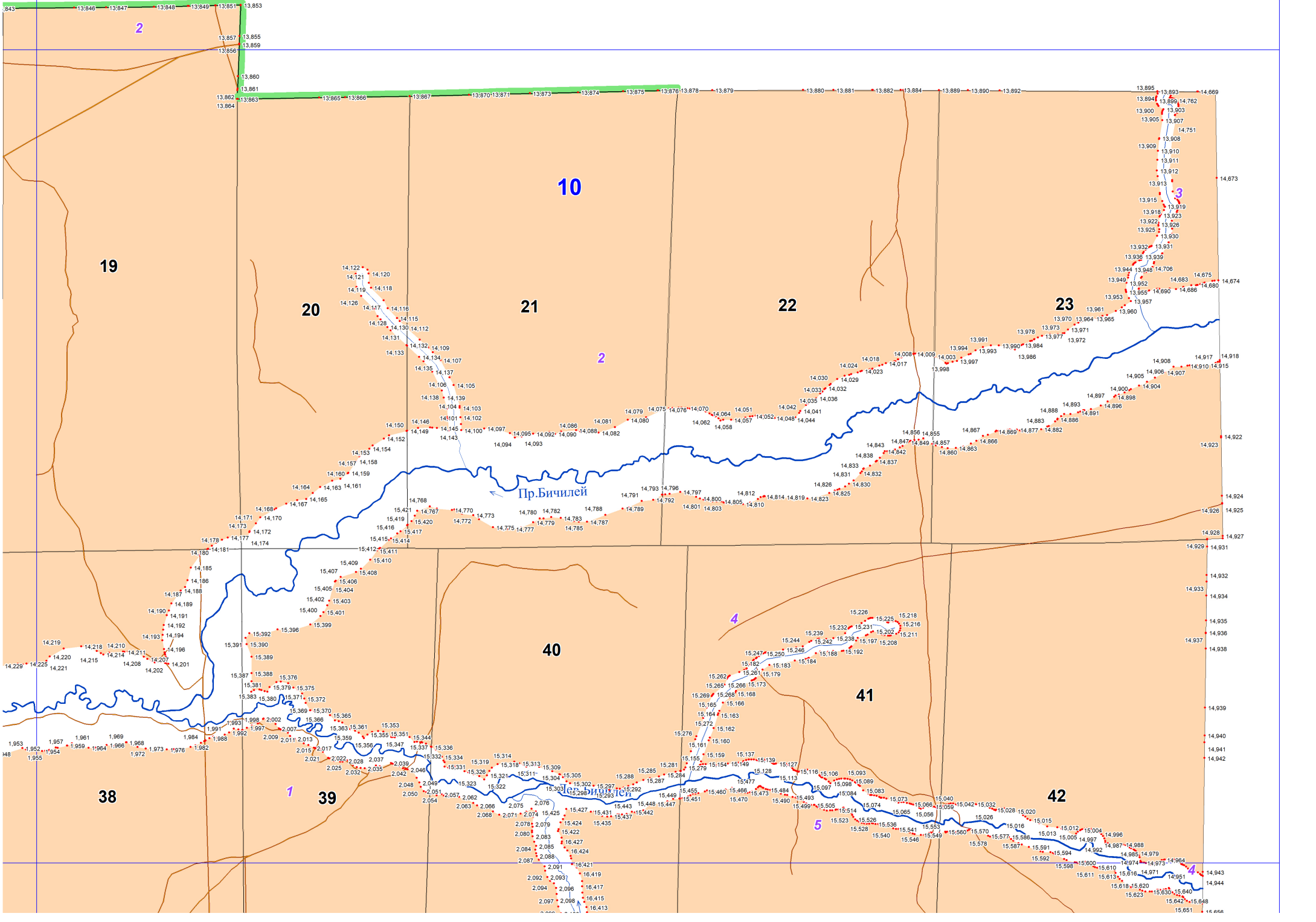
6

6









2

10

3

19

20

21

22

23

2

Пр. Бичилей

40

4

41

38

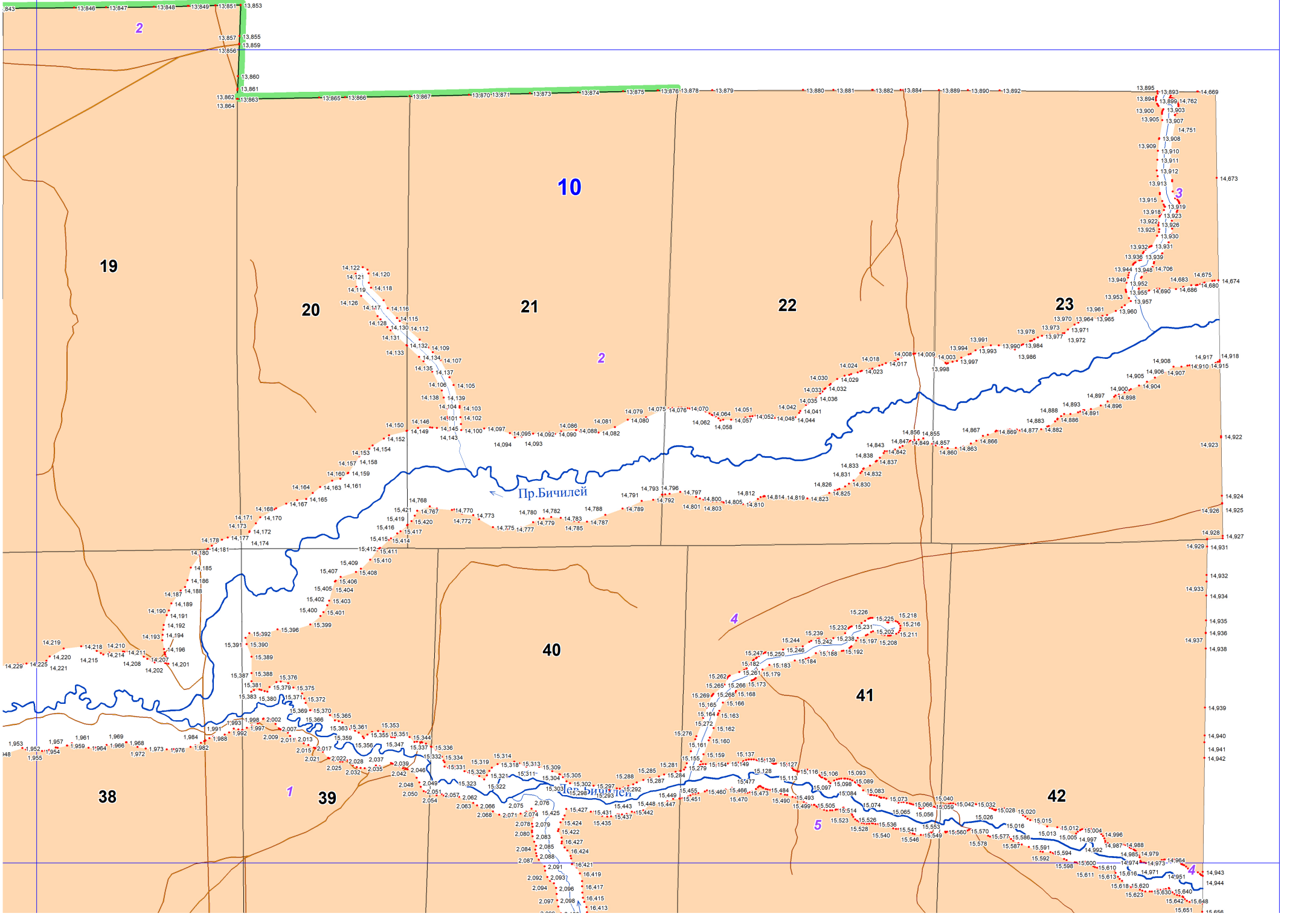
39

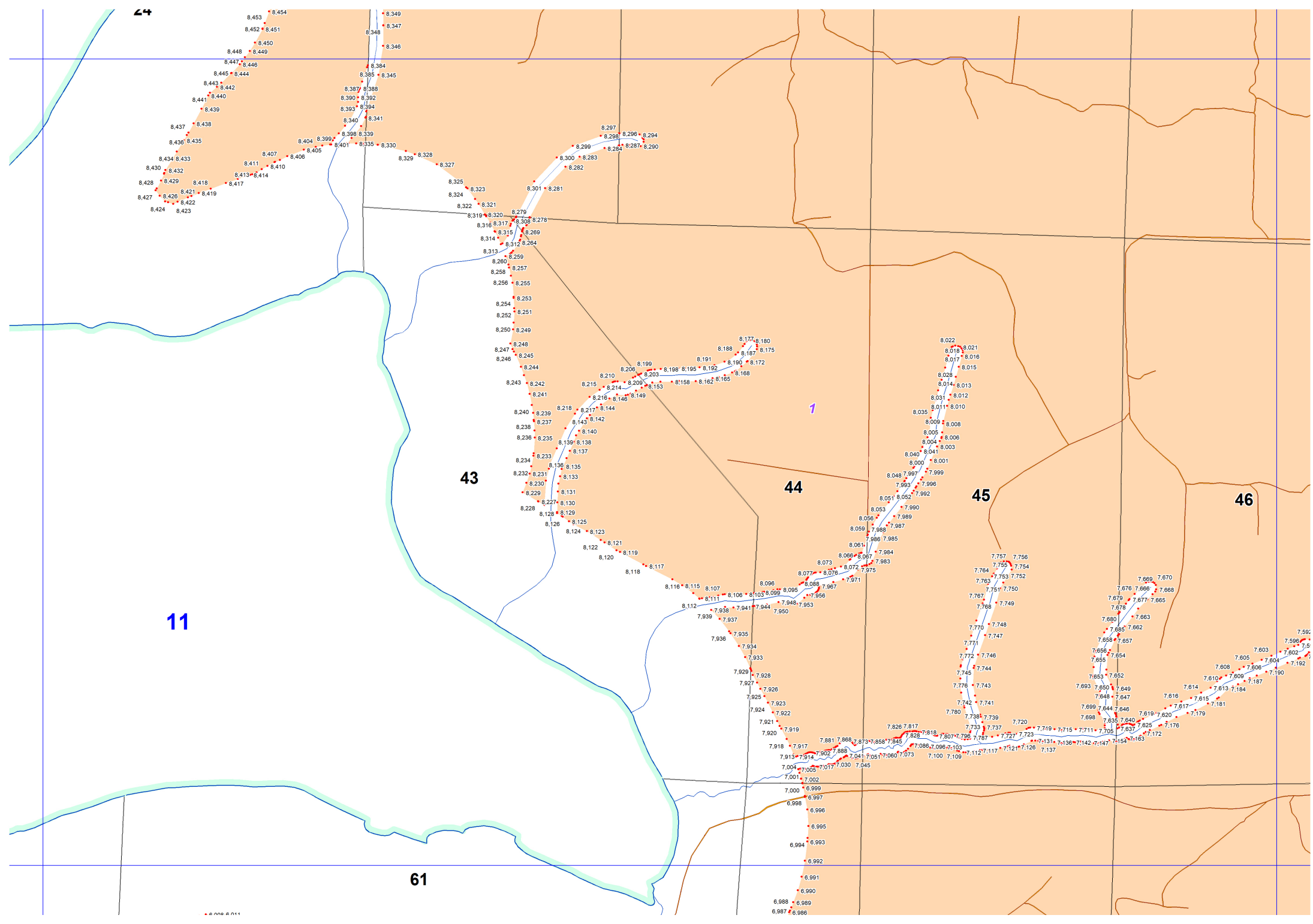
1

5

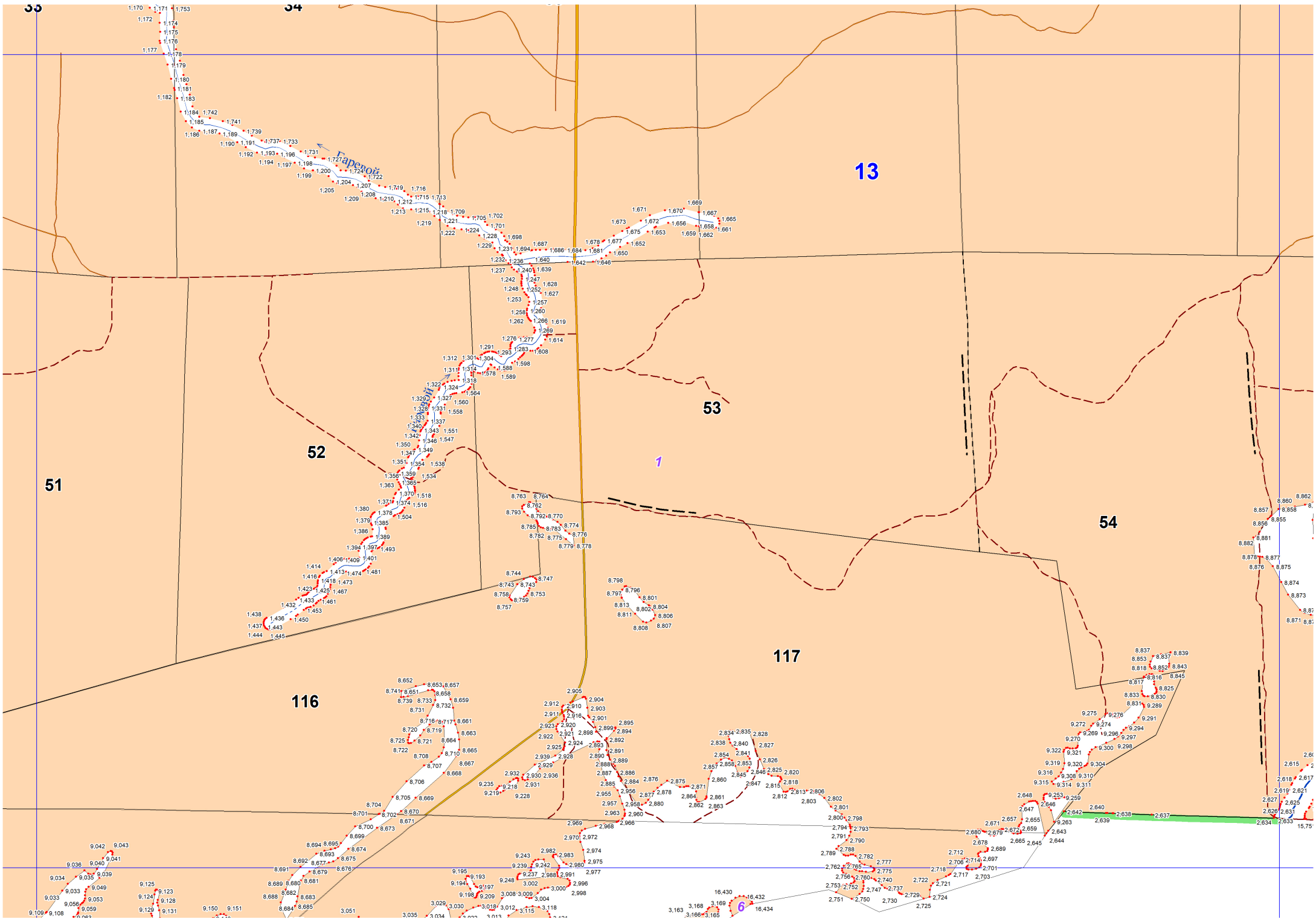
42

Пр. Си









33

34

13

51

52

53

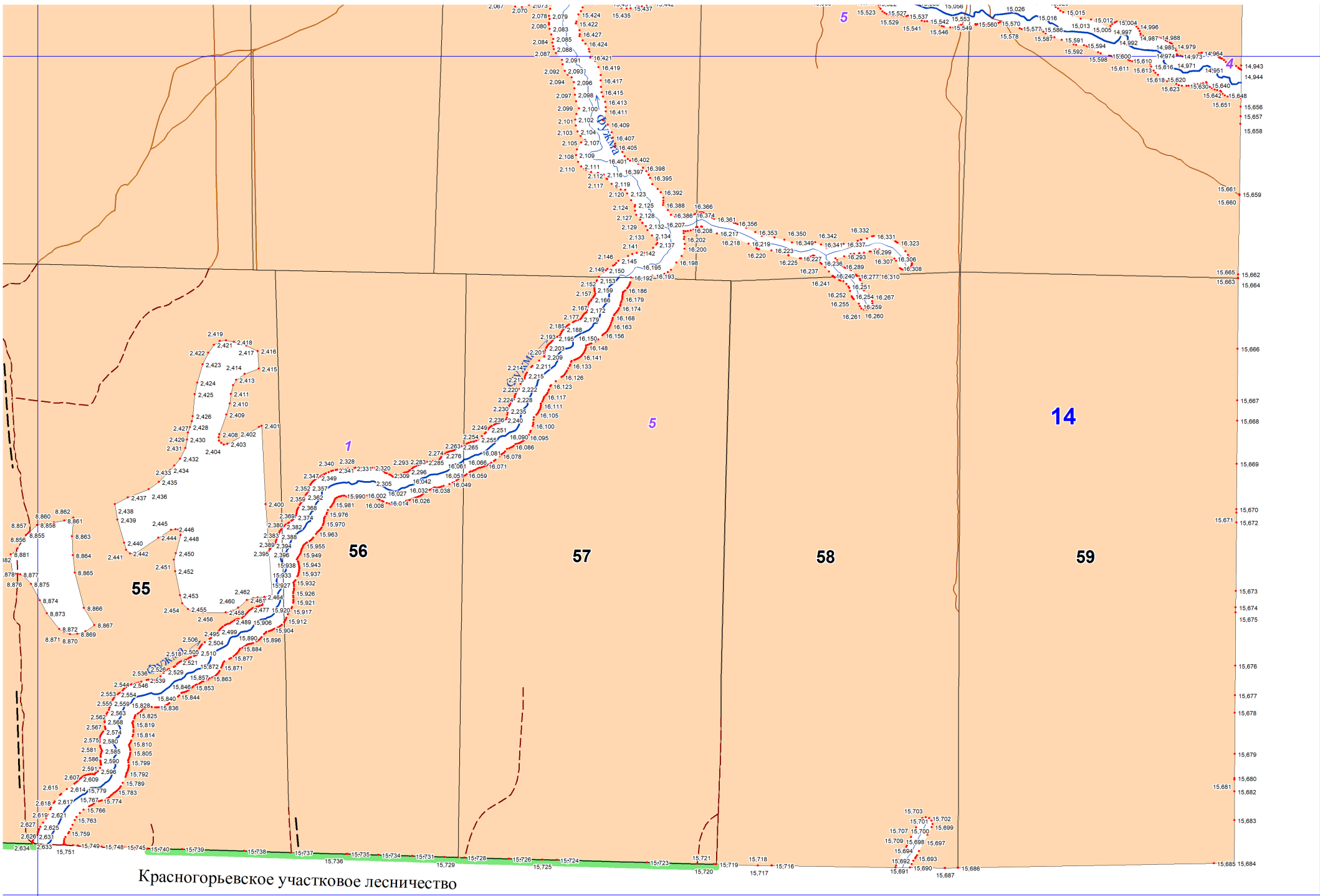
54

1

117

116

6





15

60

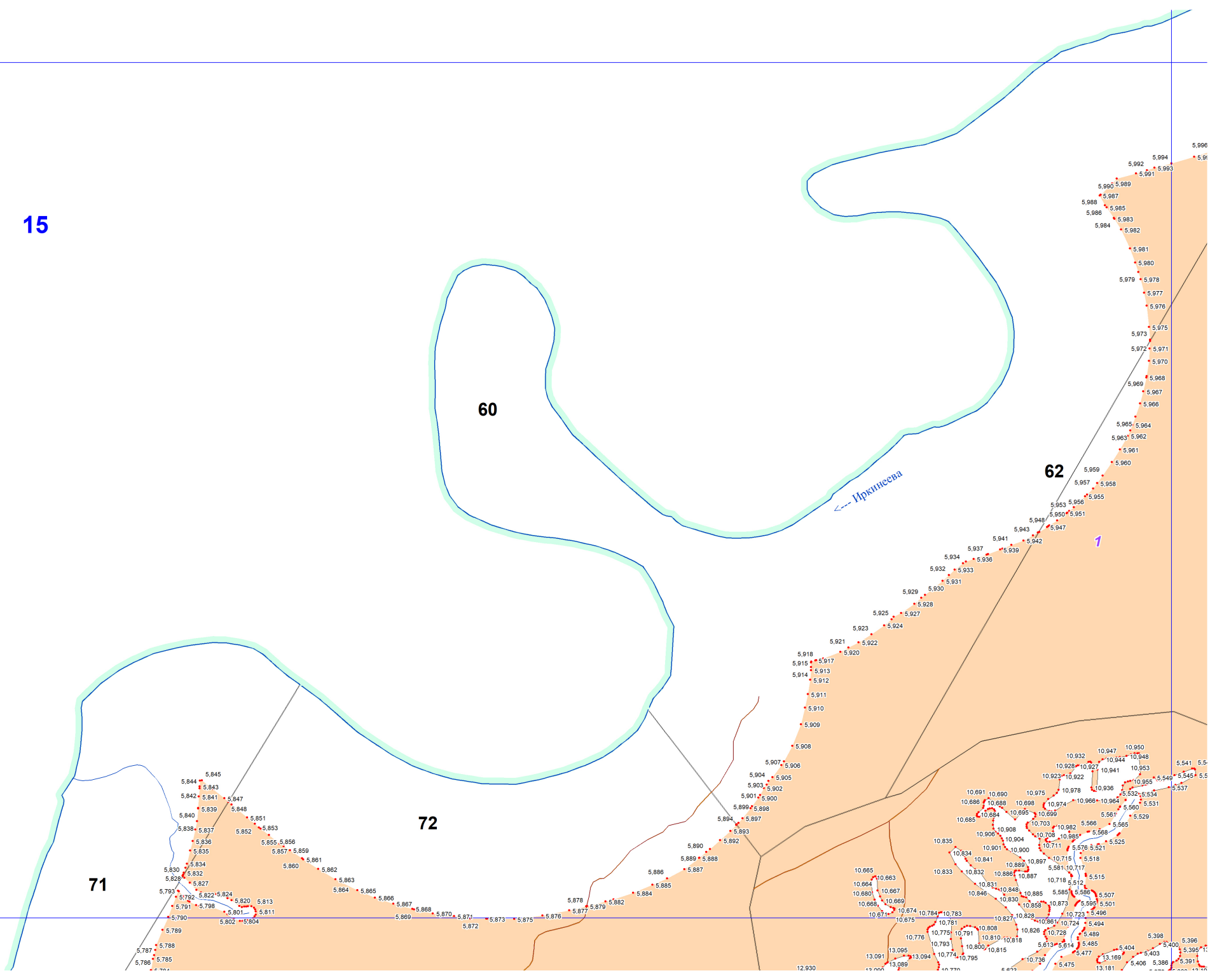
62

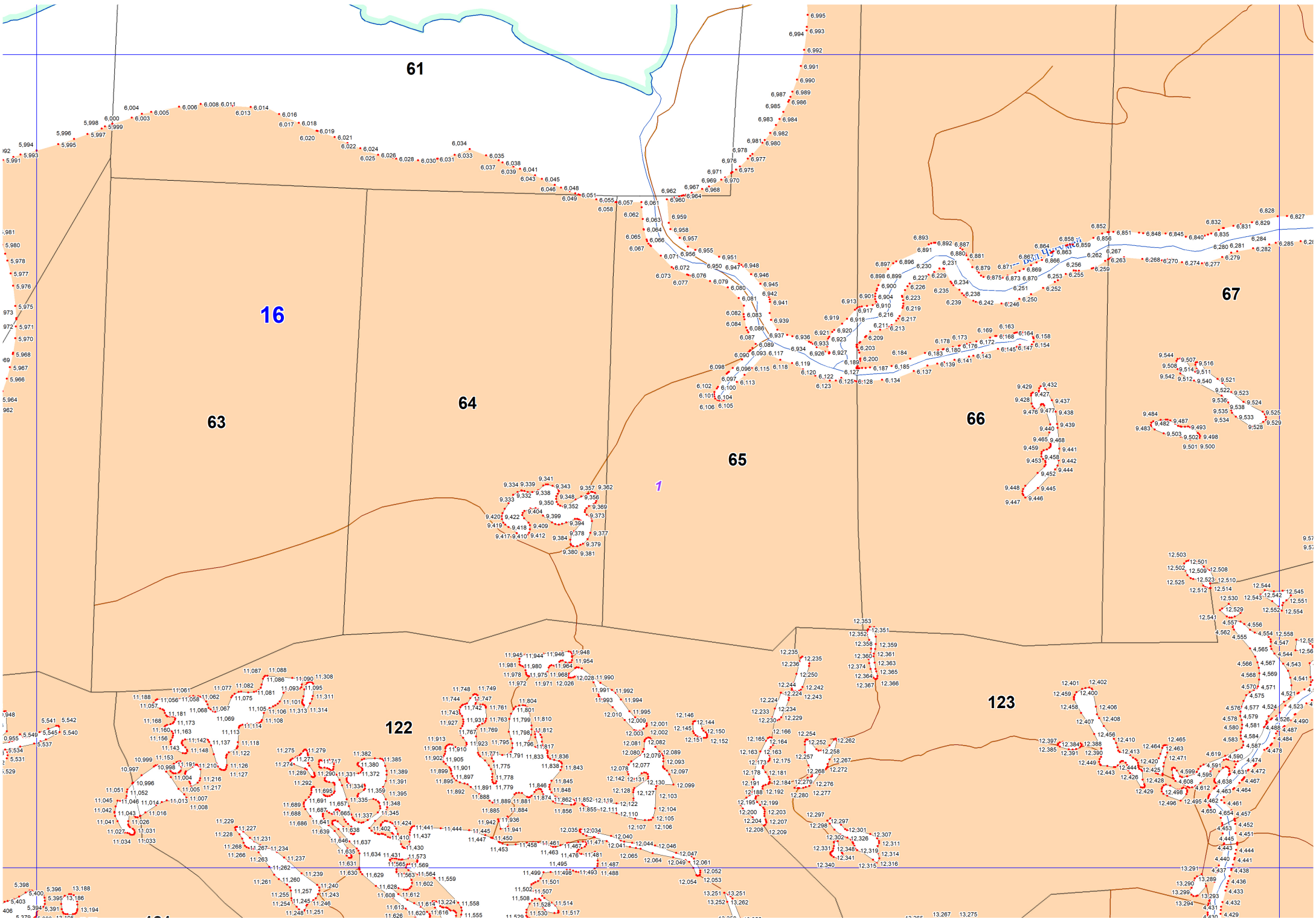
1

72

71

Иркинсева





61

16

63

64

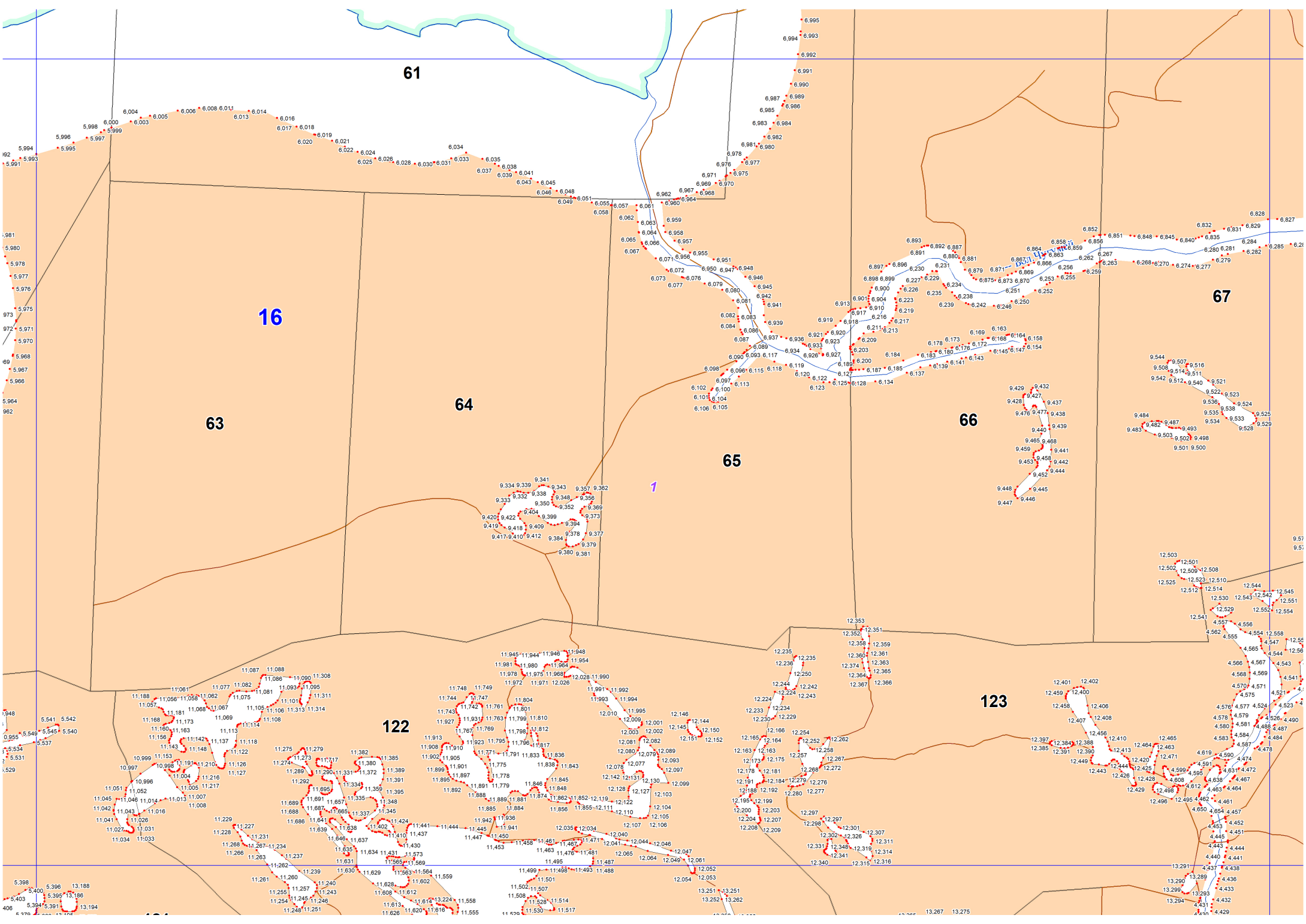
65

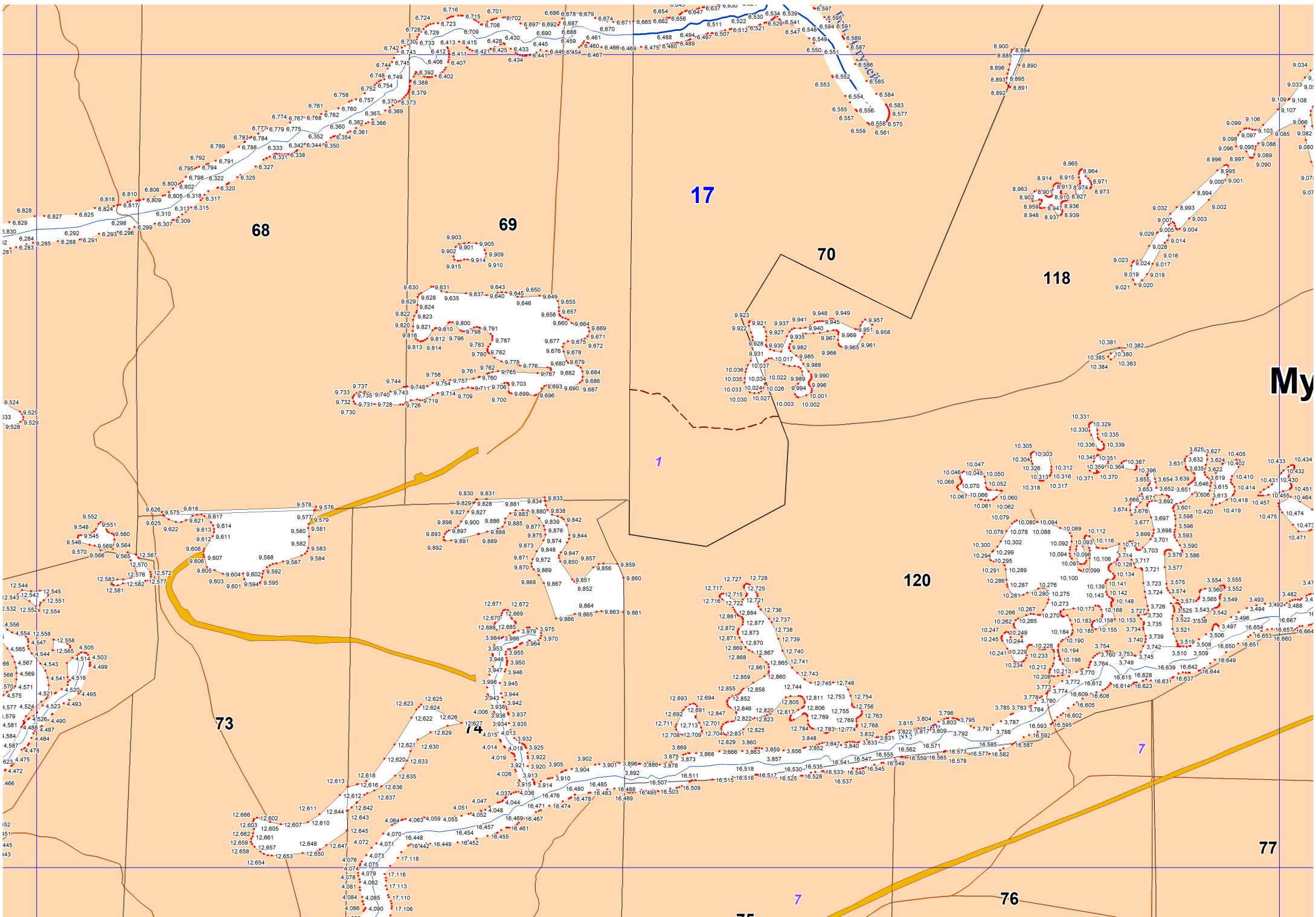
66

67

122

123





68

69

17

70

118

My

1

120

73

74

7

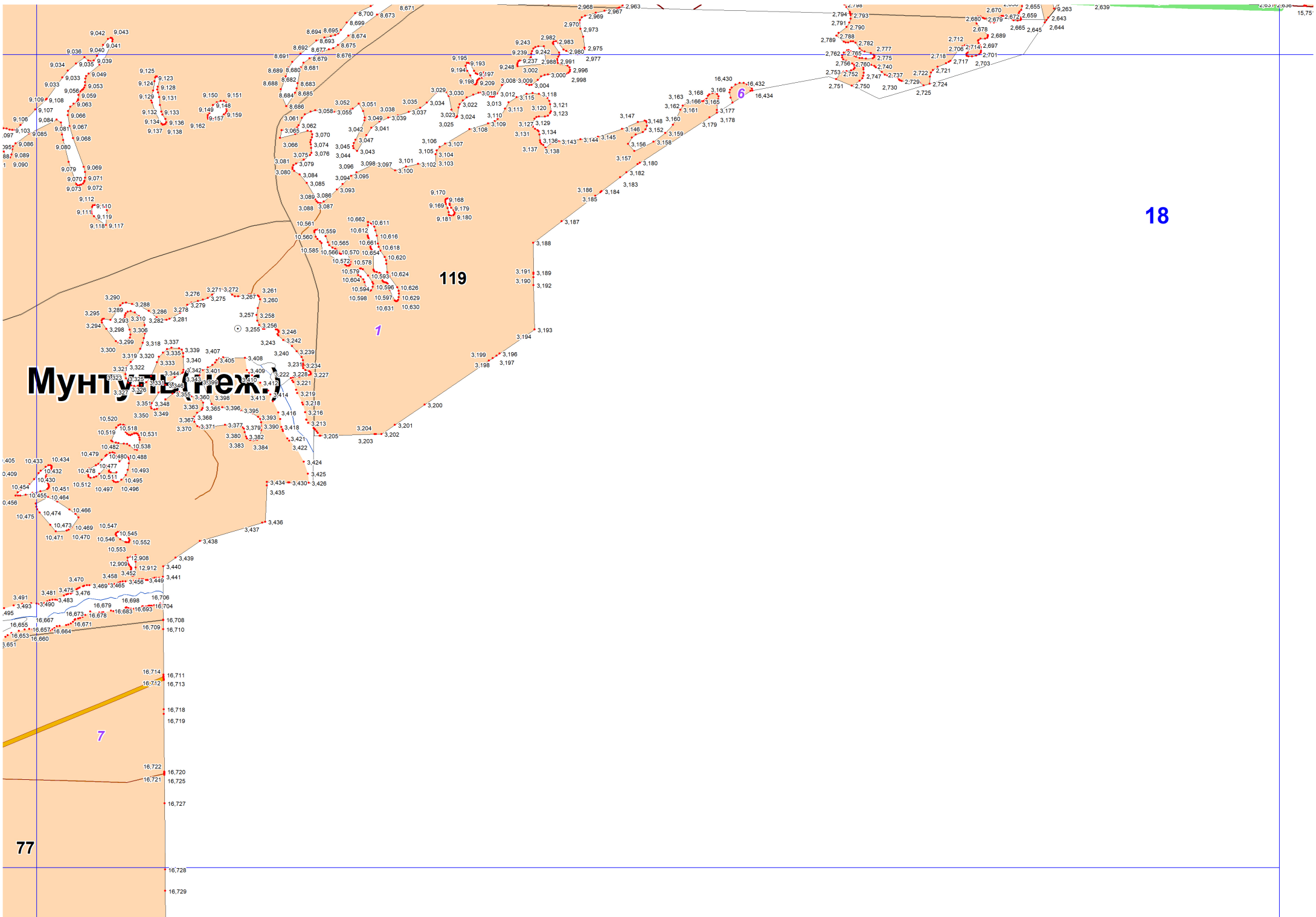
77

76

7

75





Муңтуз (Неж.)

119

18

7

77

# Иркинеево

71

124

78

79

19

92

80

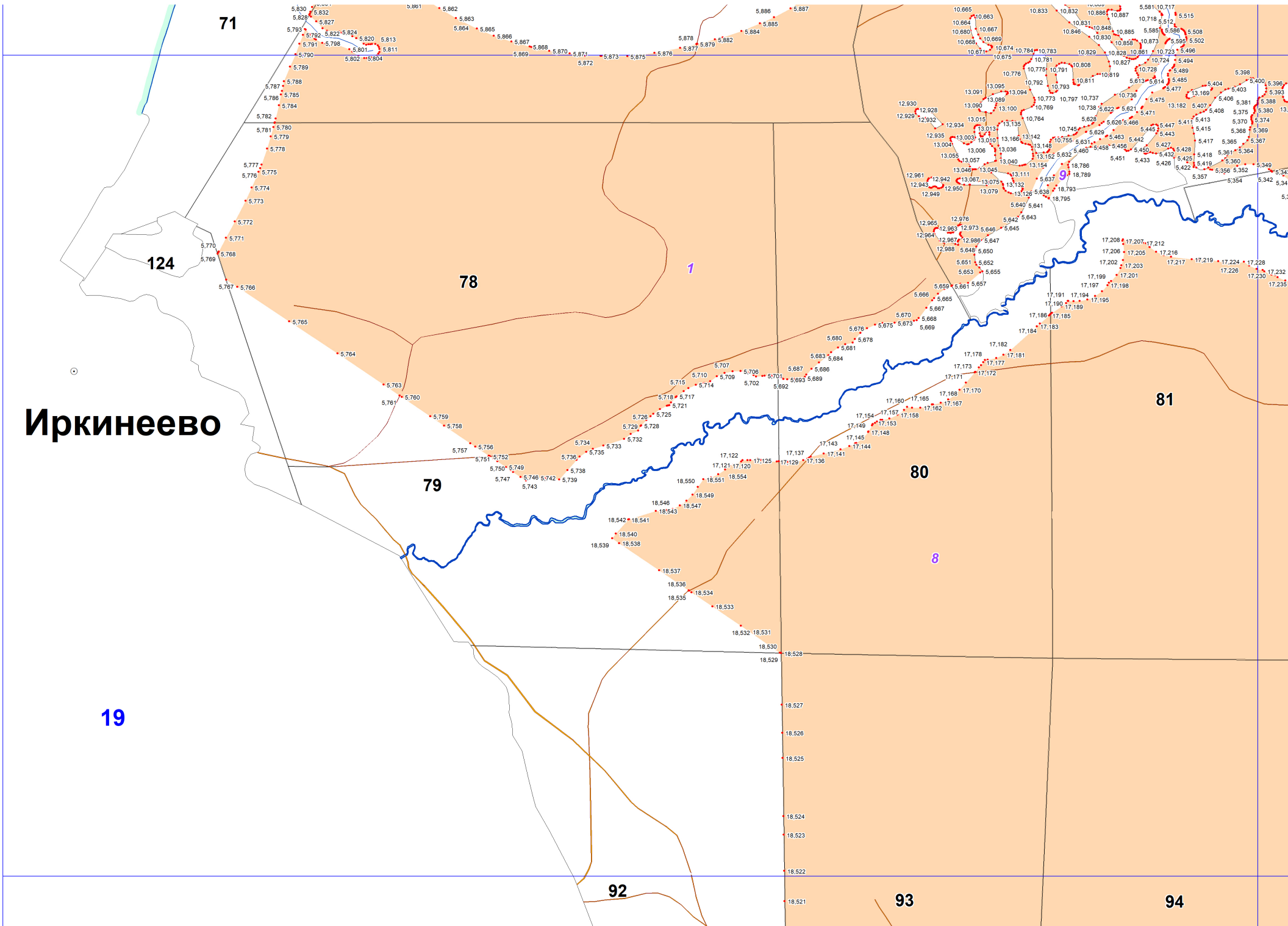
93

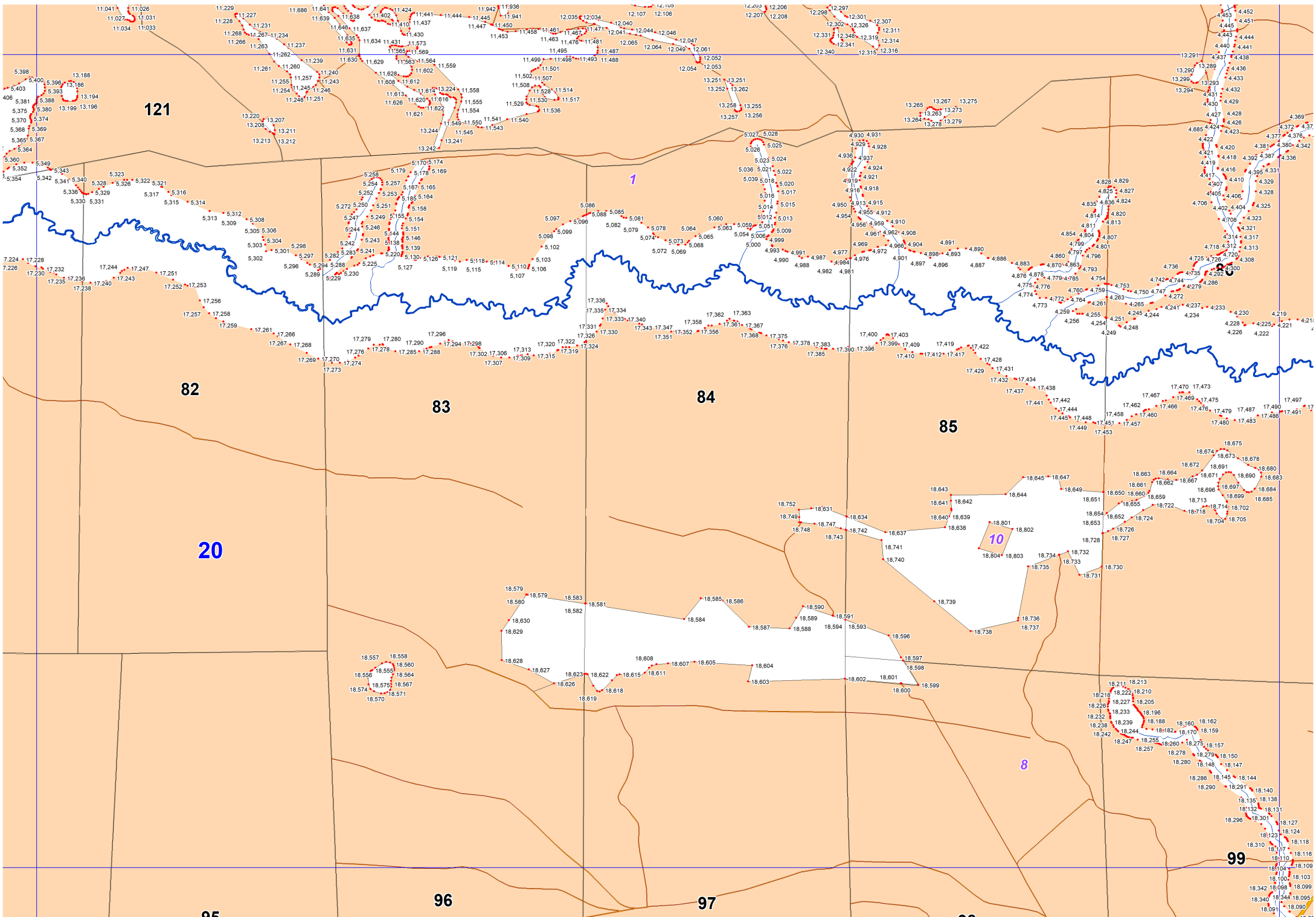
81

94

1

8





121

1

82

83

84

85

20

10

8

99

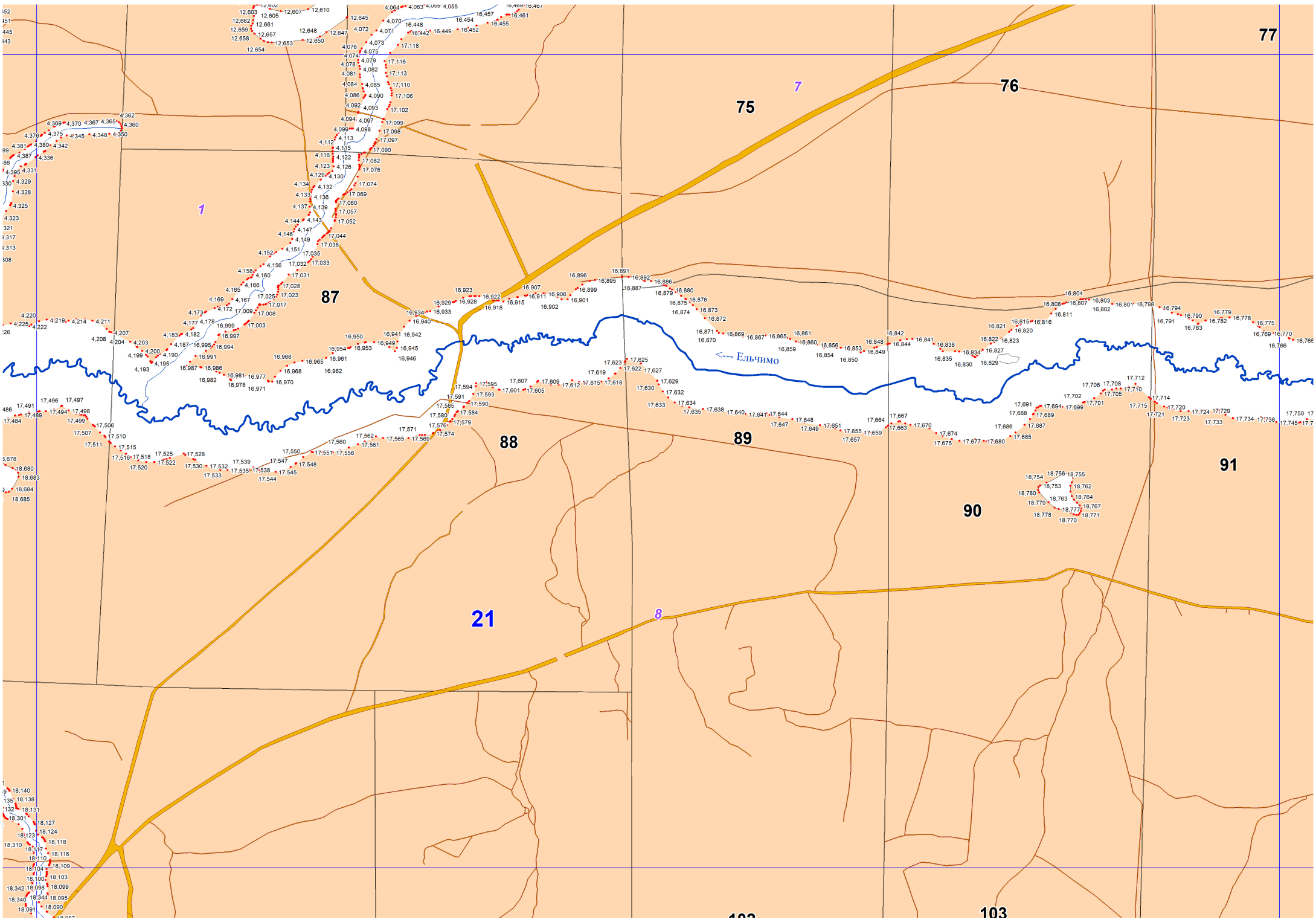
95

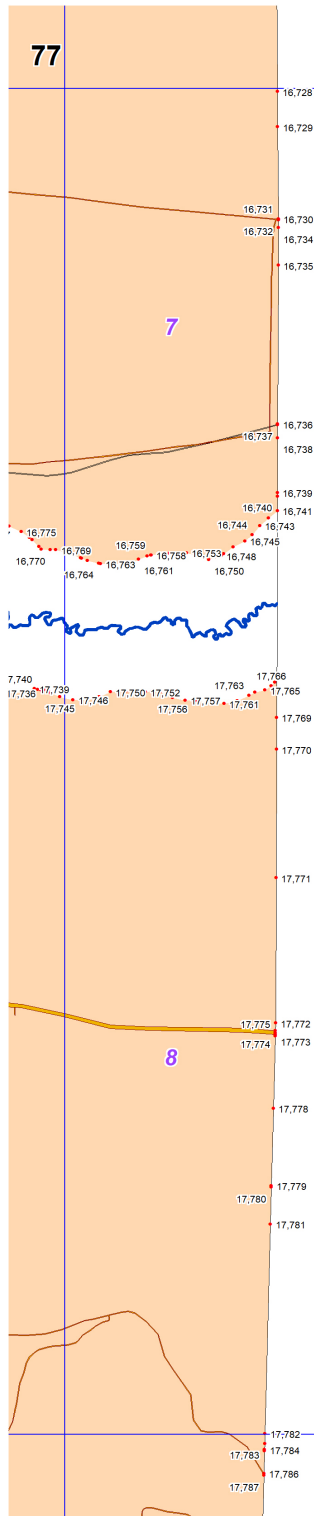
96

97

98

100





23

92

93

94

8

111

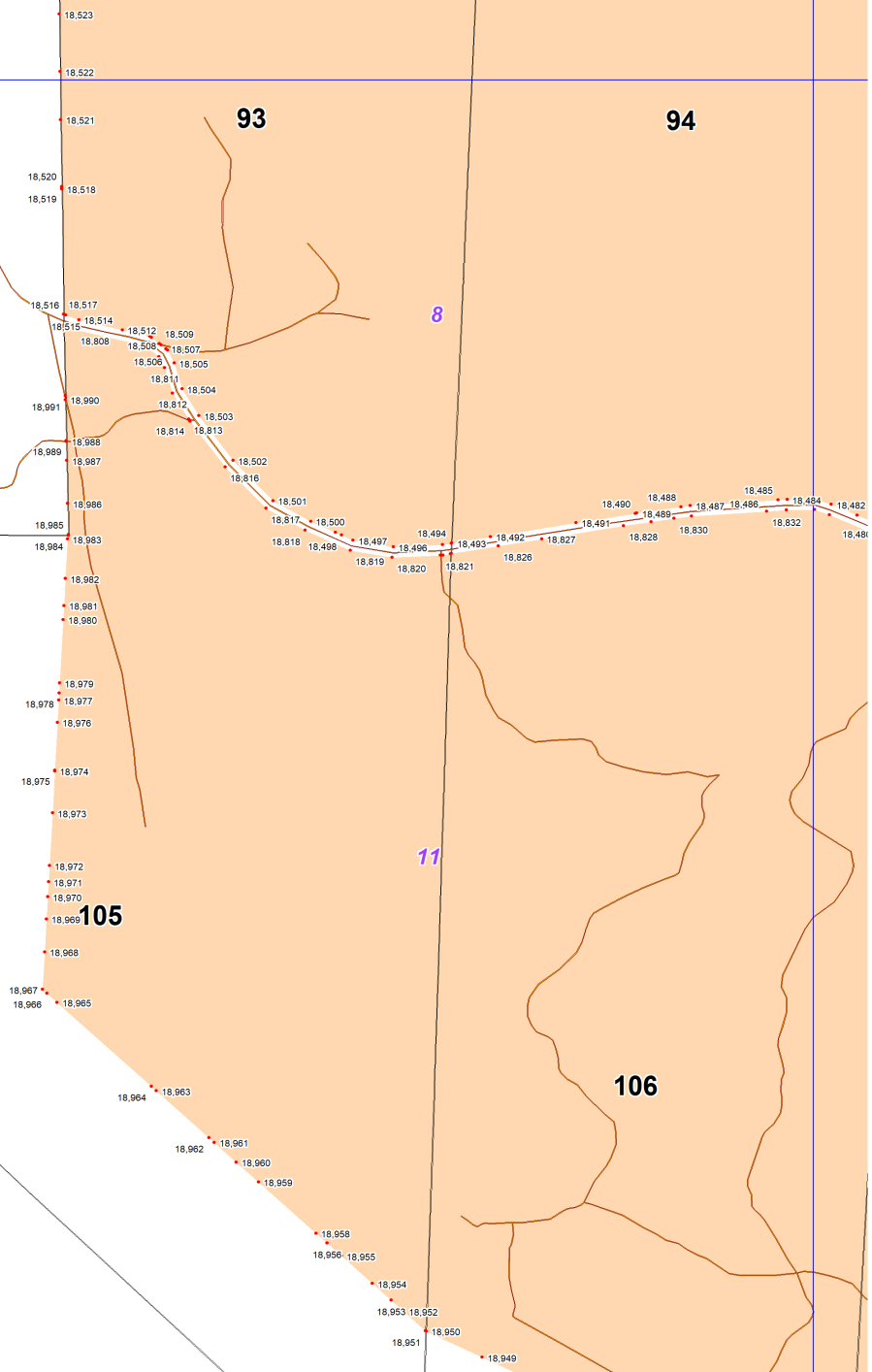
105

106

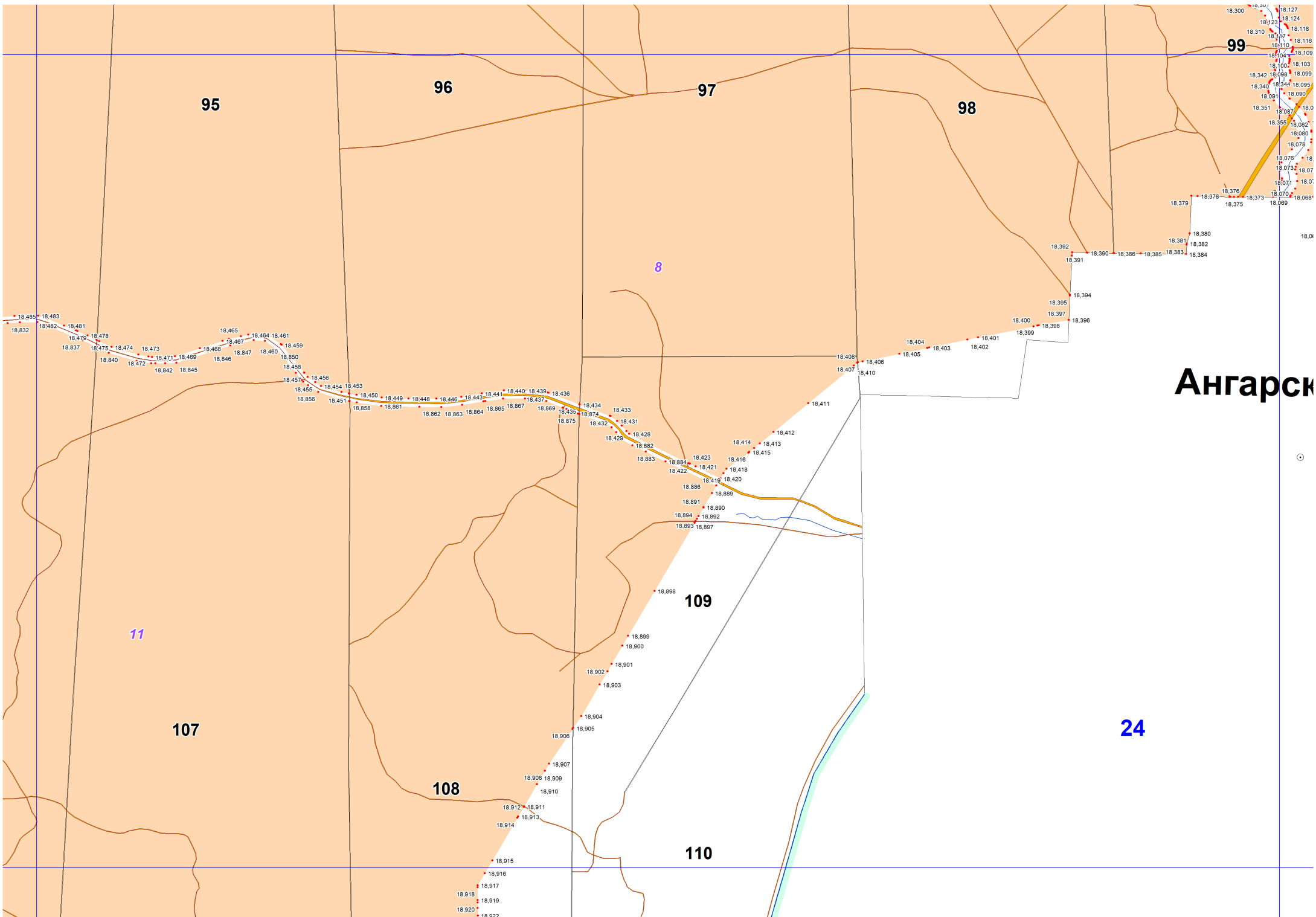
11

114

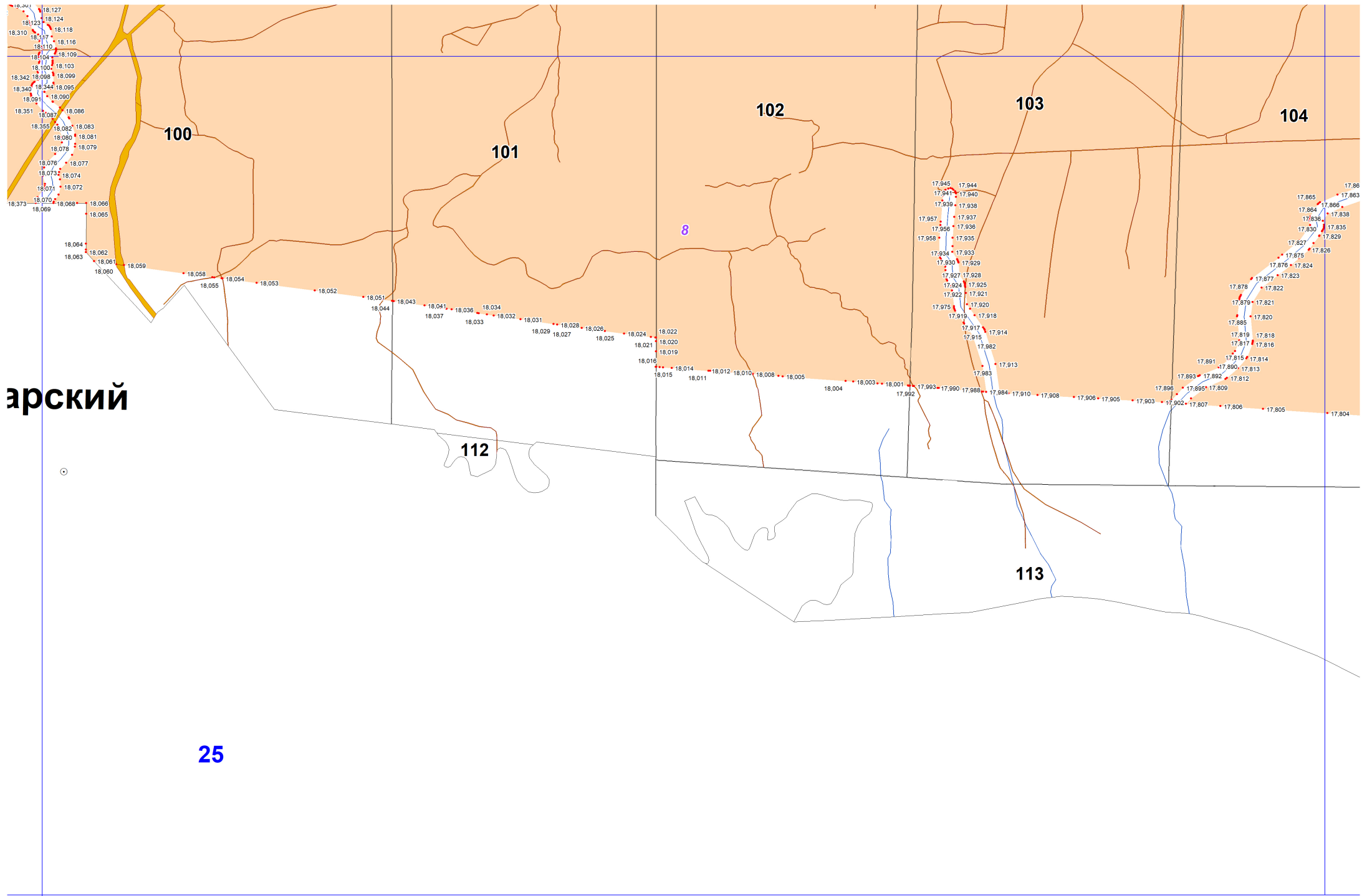
11



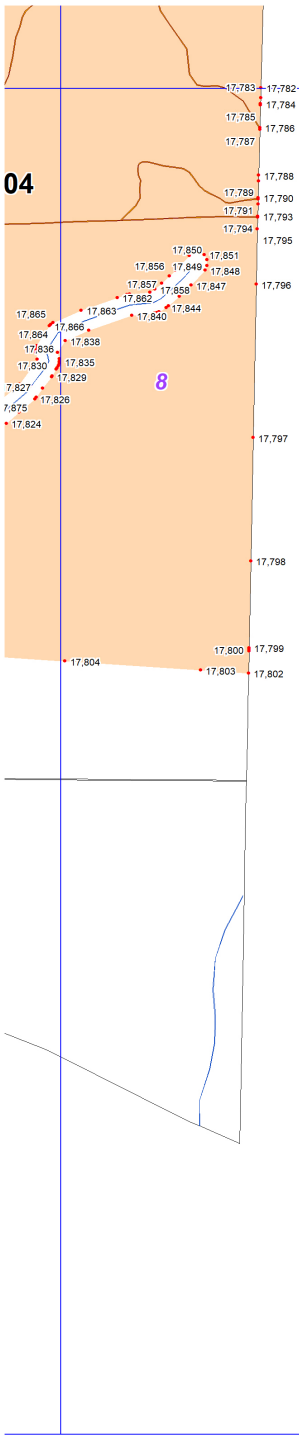




Ангарск





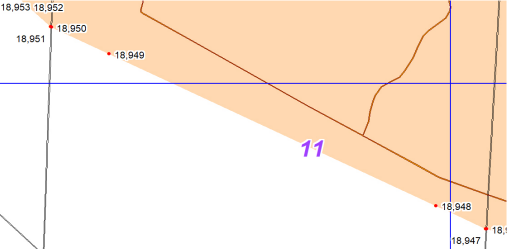


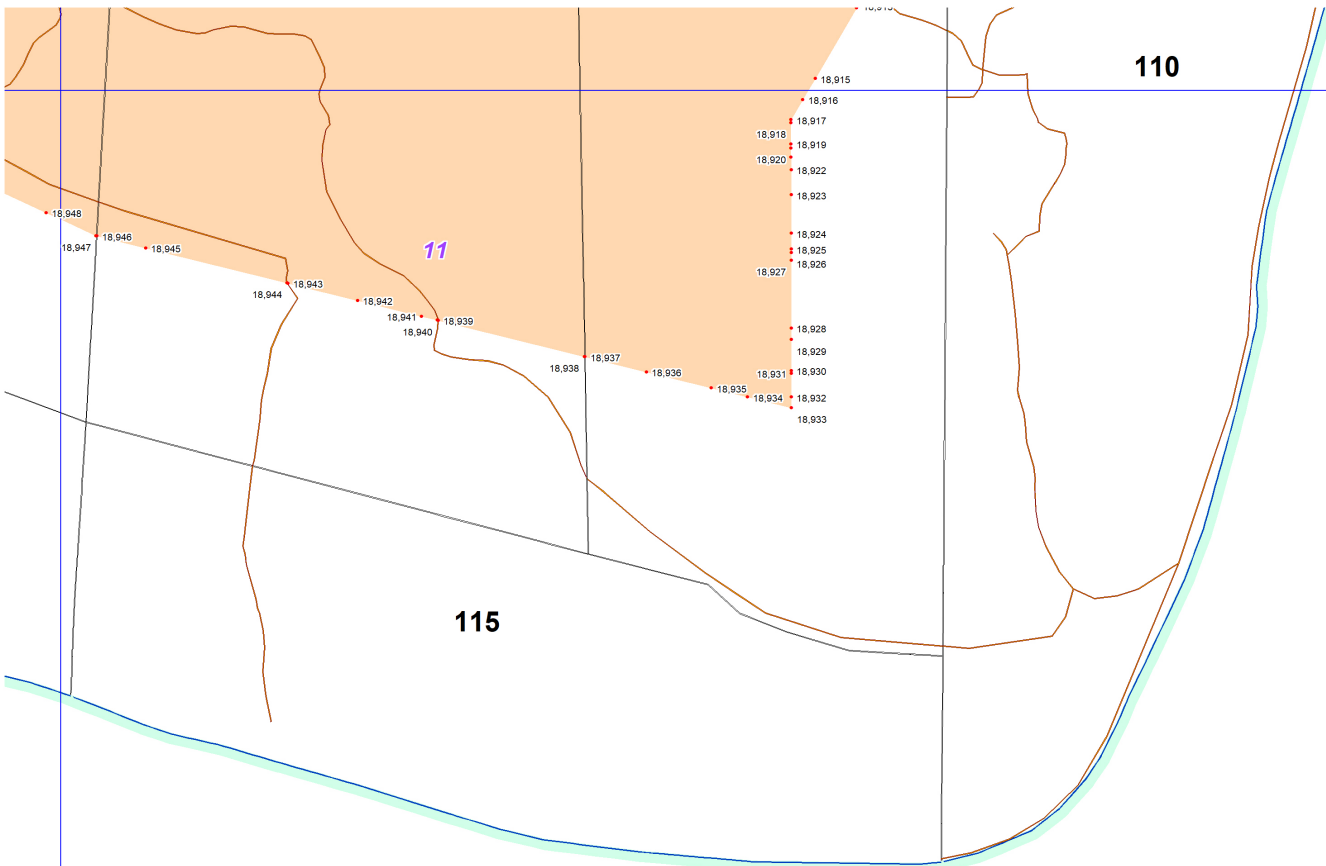
27

114

11

← АНГАРА





110

11

115

28