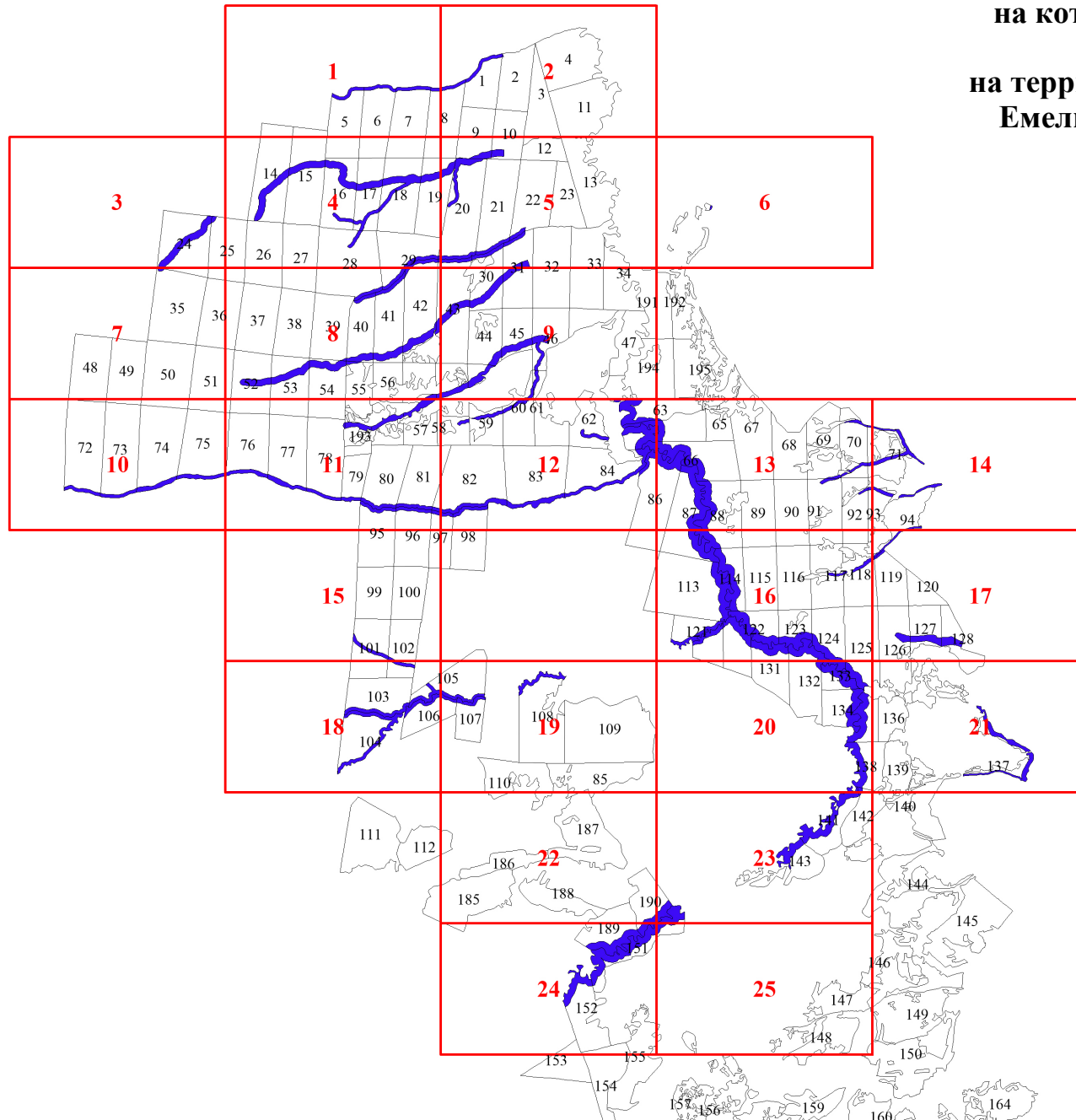


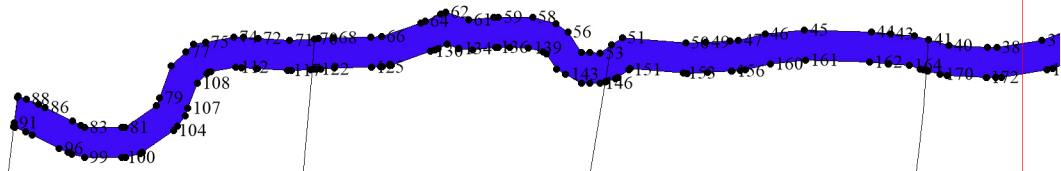
**Графическое описание местоположения границ земель,
на которых располагаются леса, расположенные в
водоохранных зонах,
на территории Никольского участкового лесничества
Емельяновского лесничества Красноярского края**



Условные обозначения:

- 1** - схема расположения листов
- границы:
 - - участковых лесничеств
 - - участков
 - - листов

1



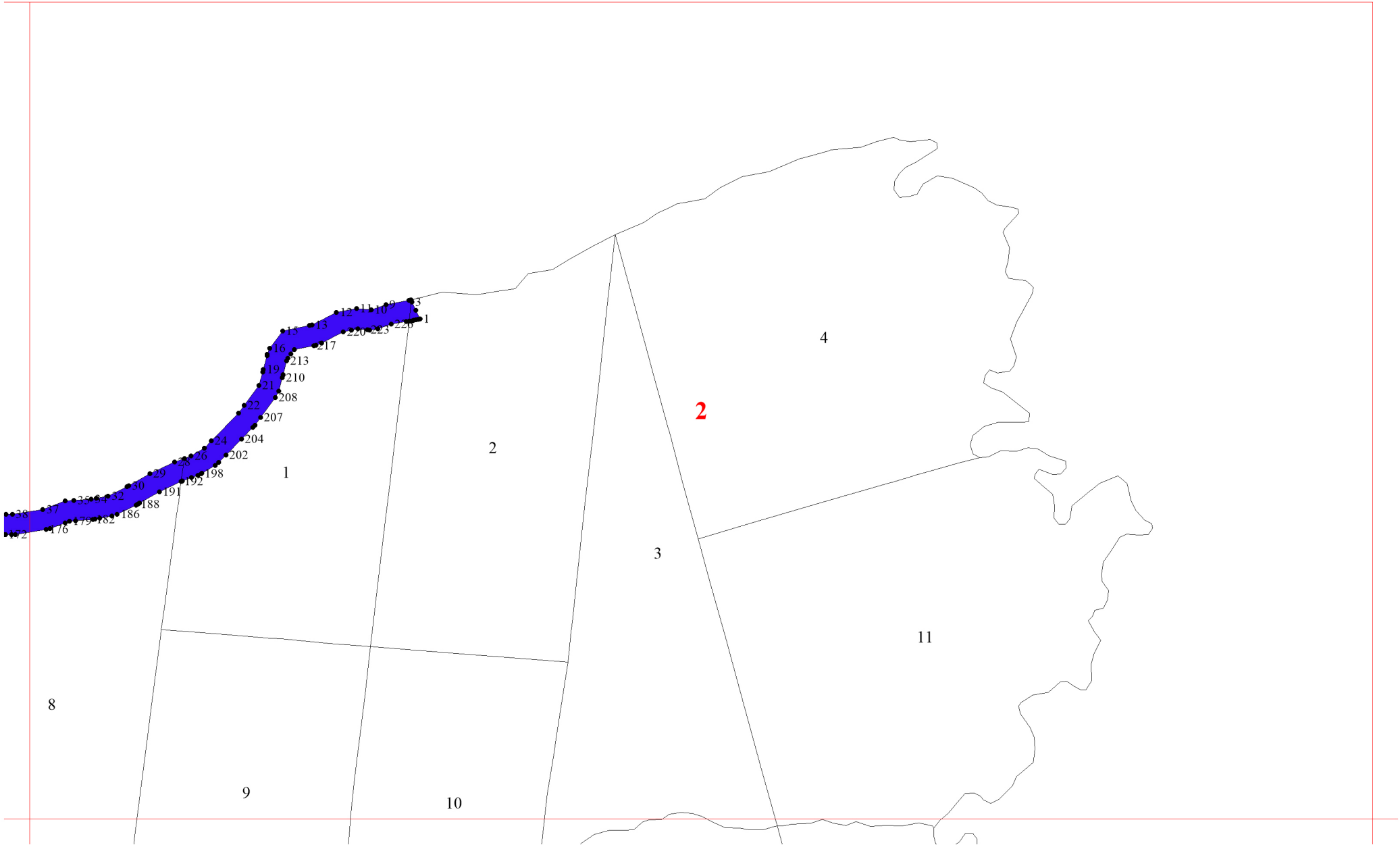
1

5

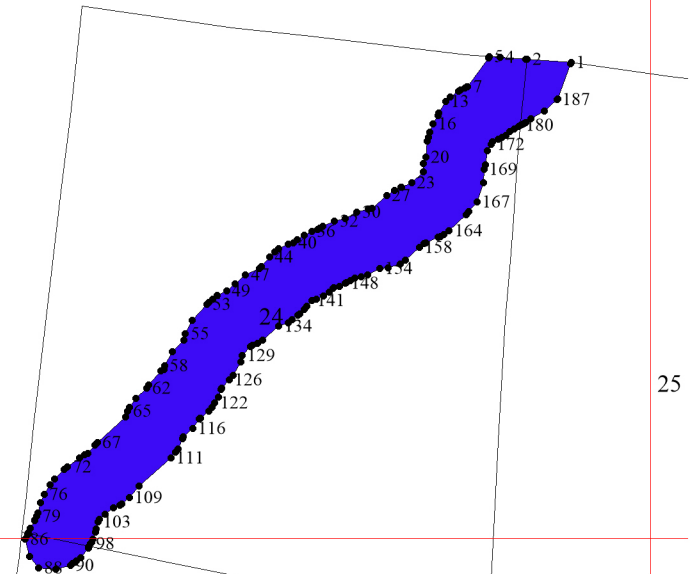
6

7

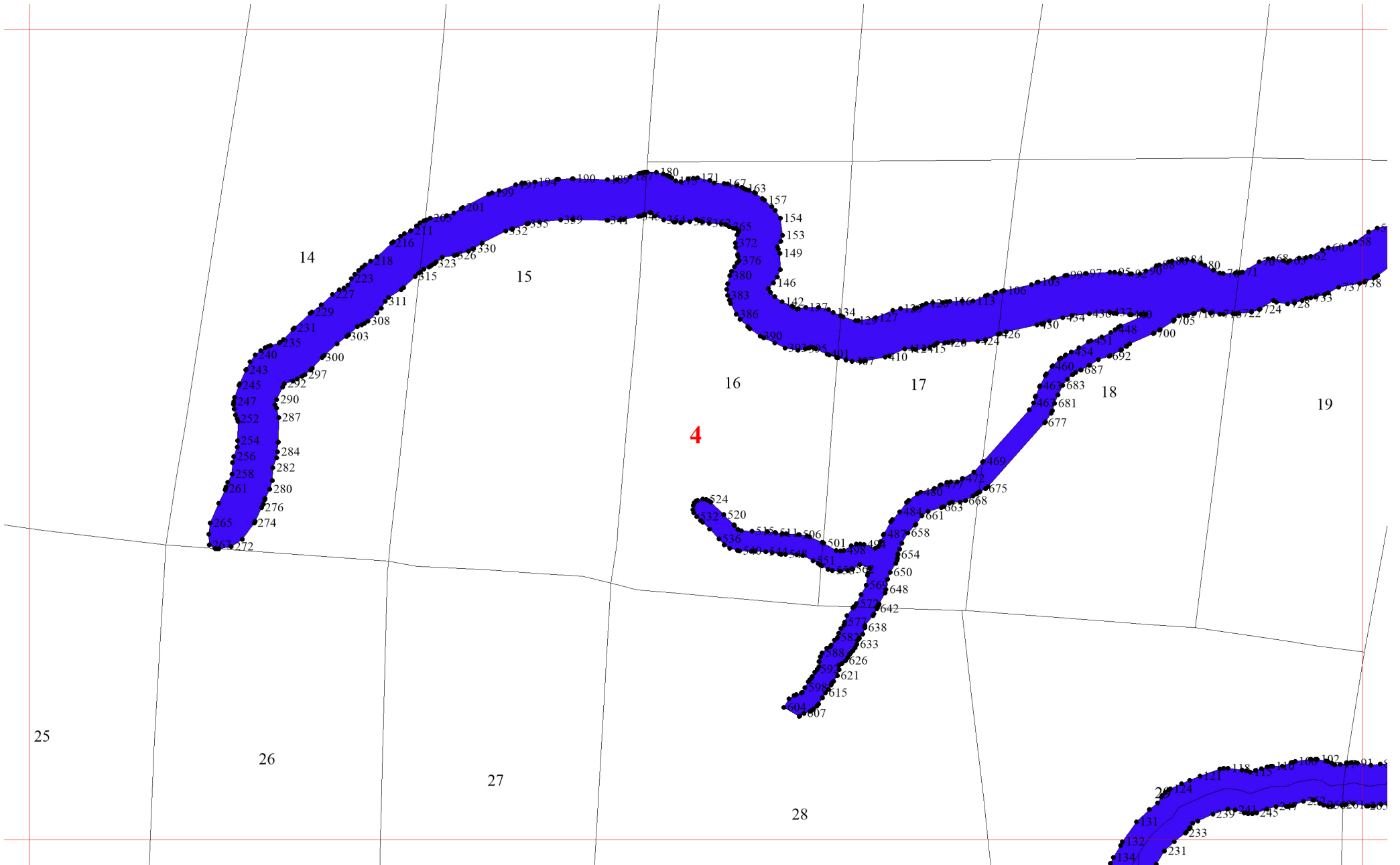
8

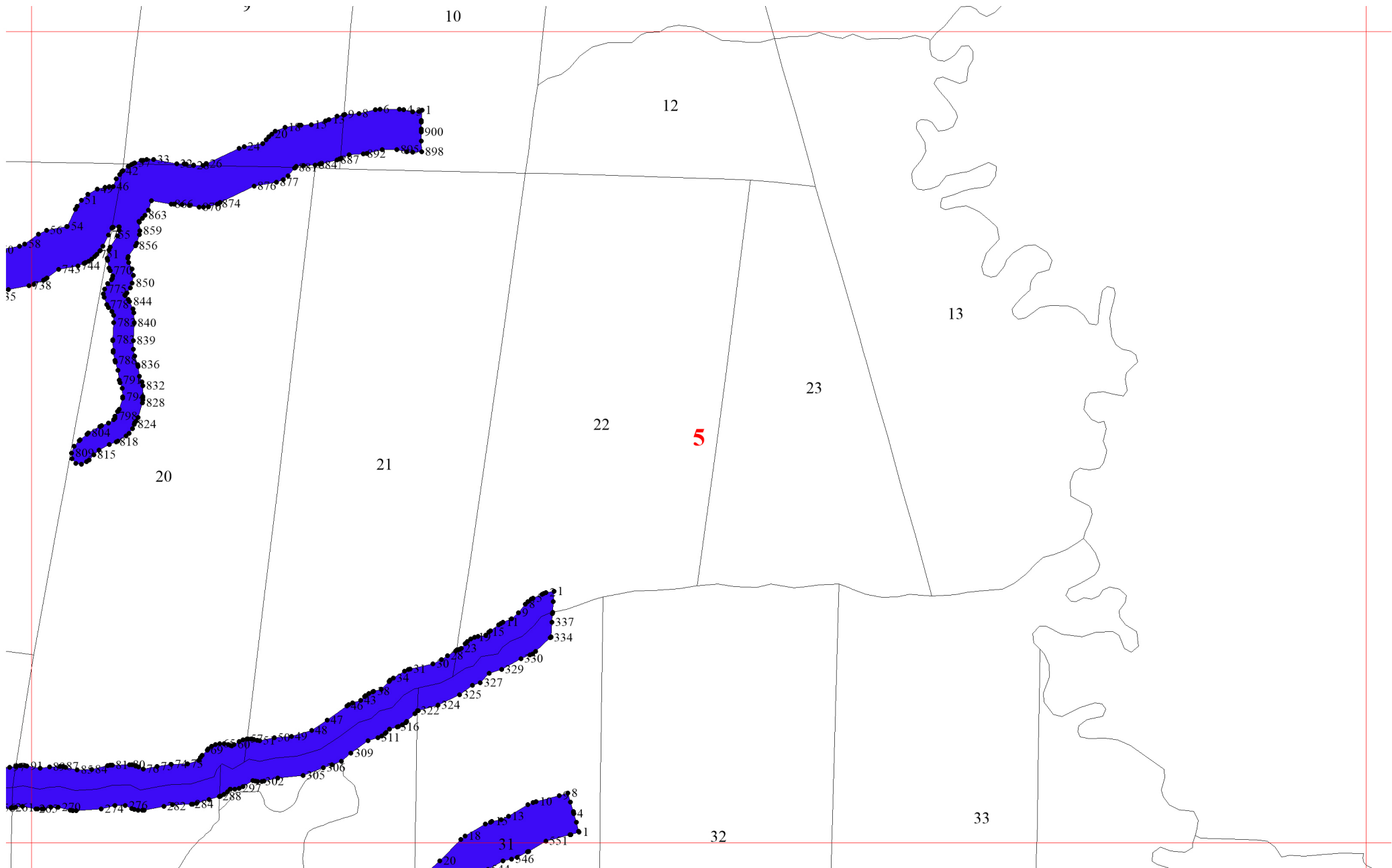


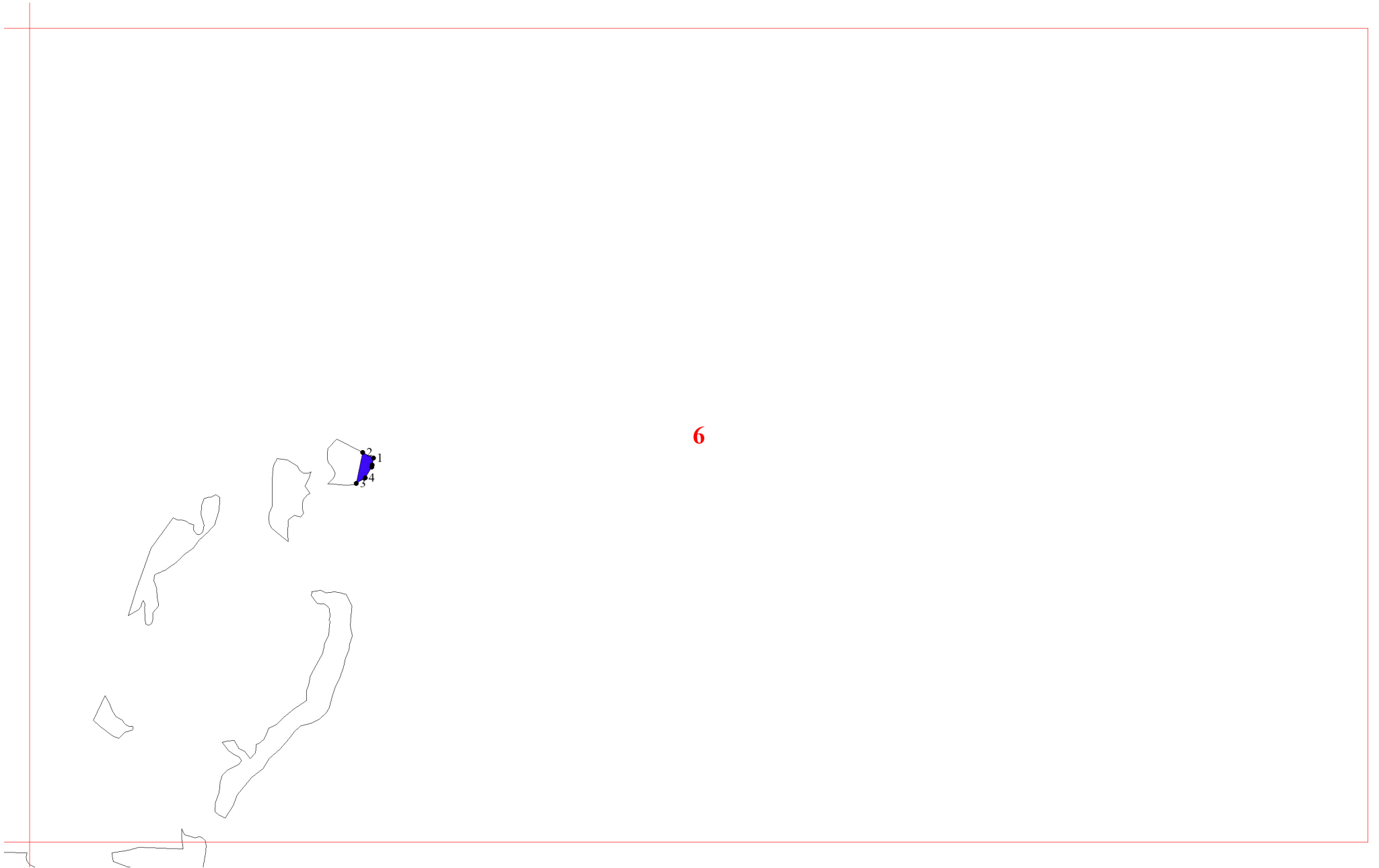
3

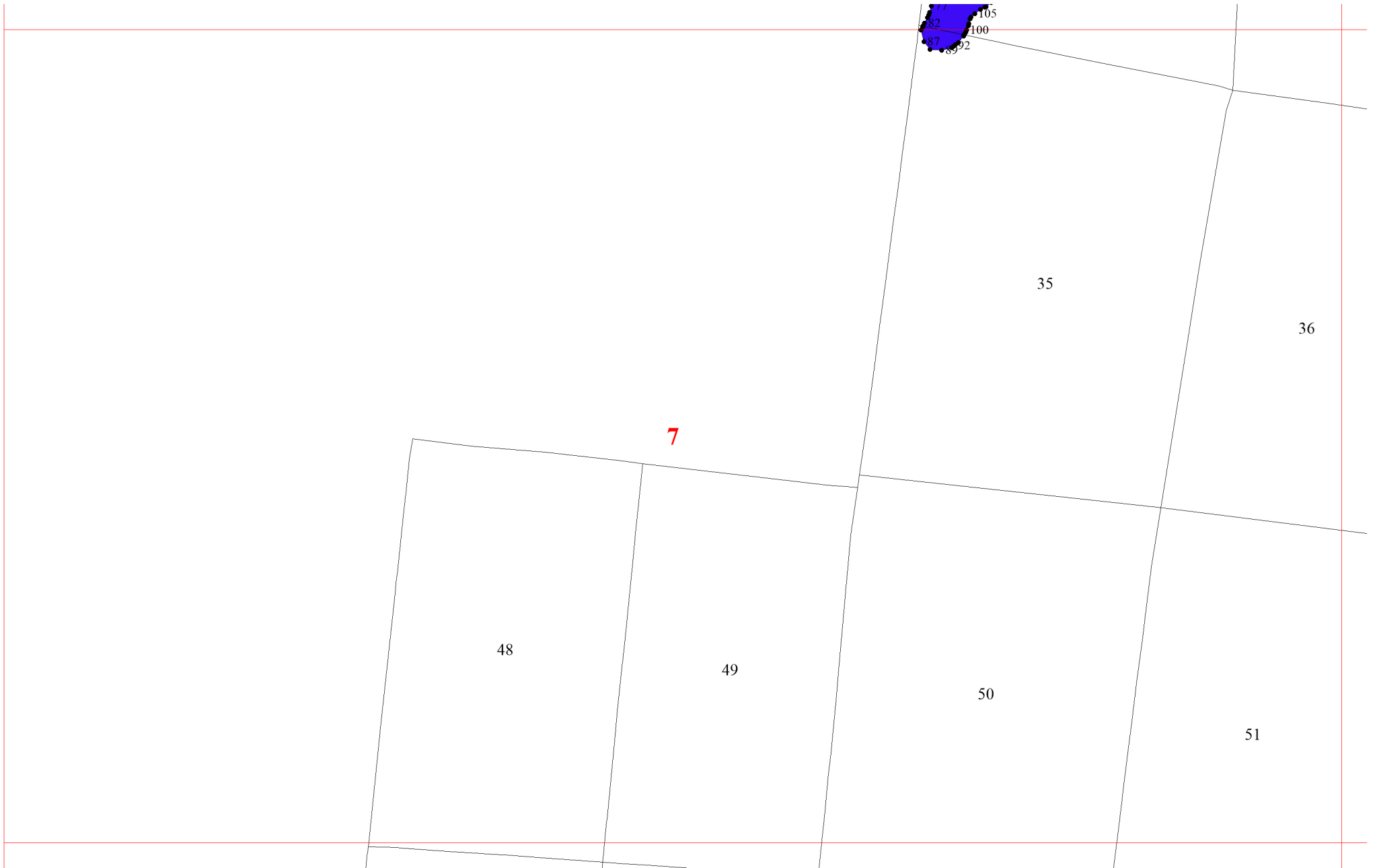


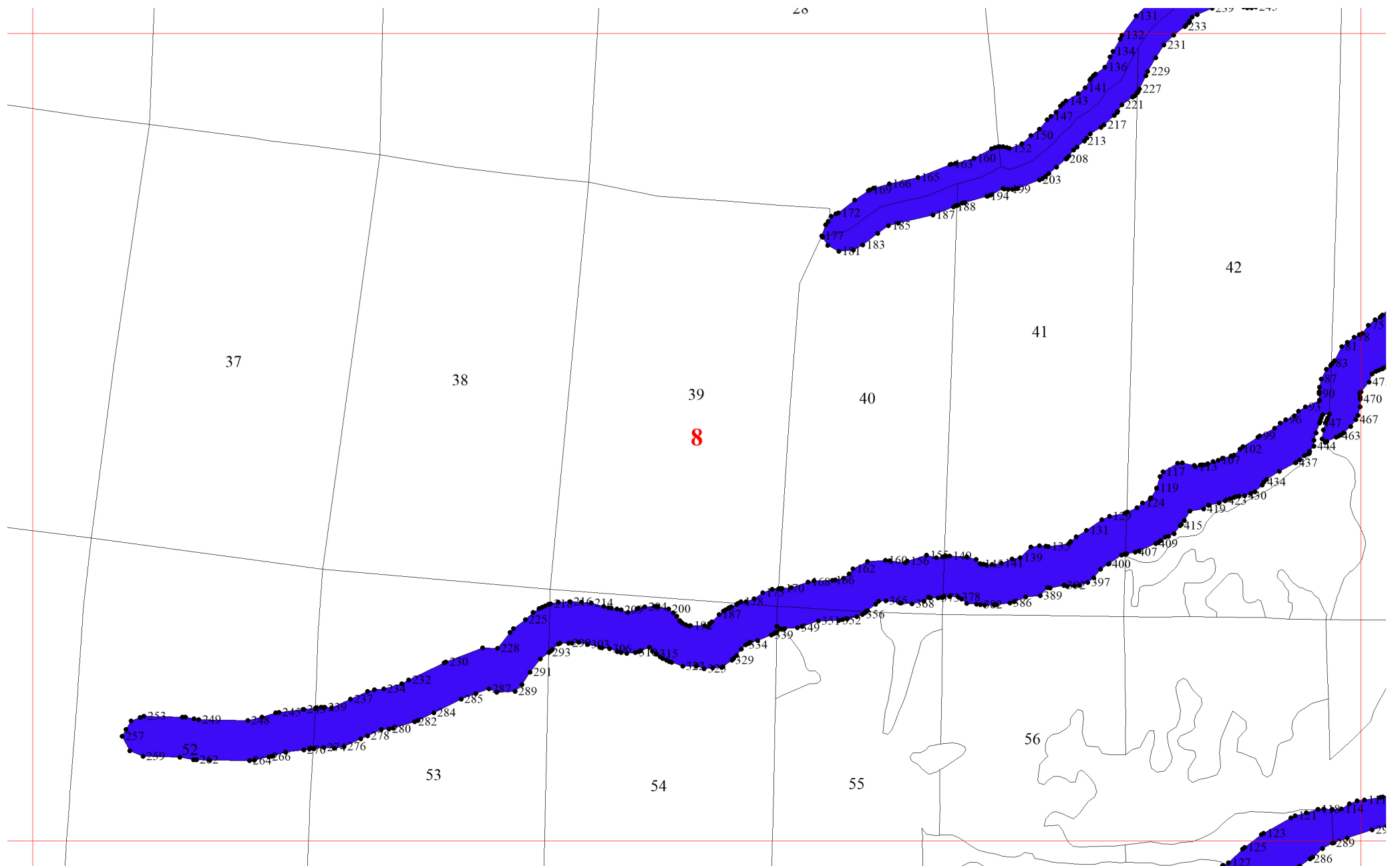
3

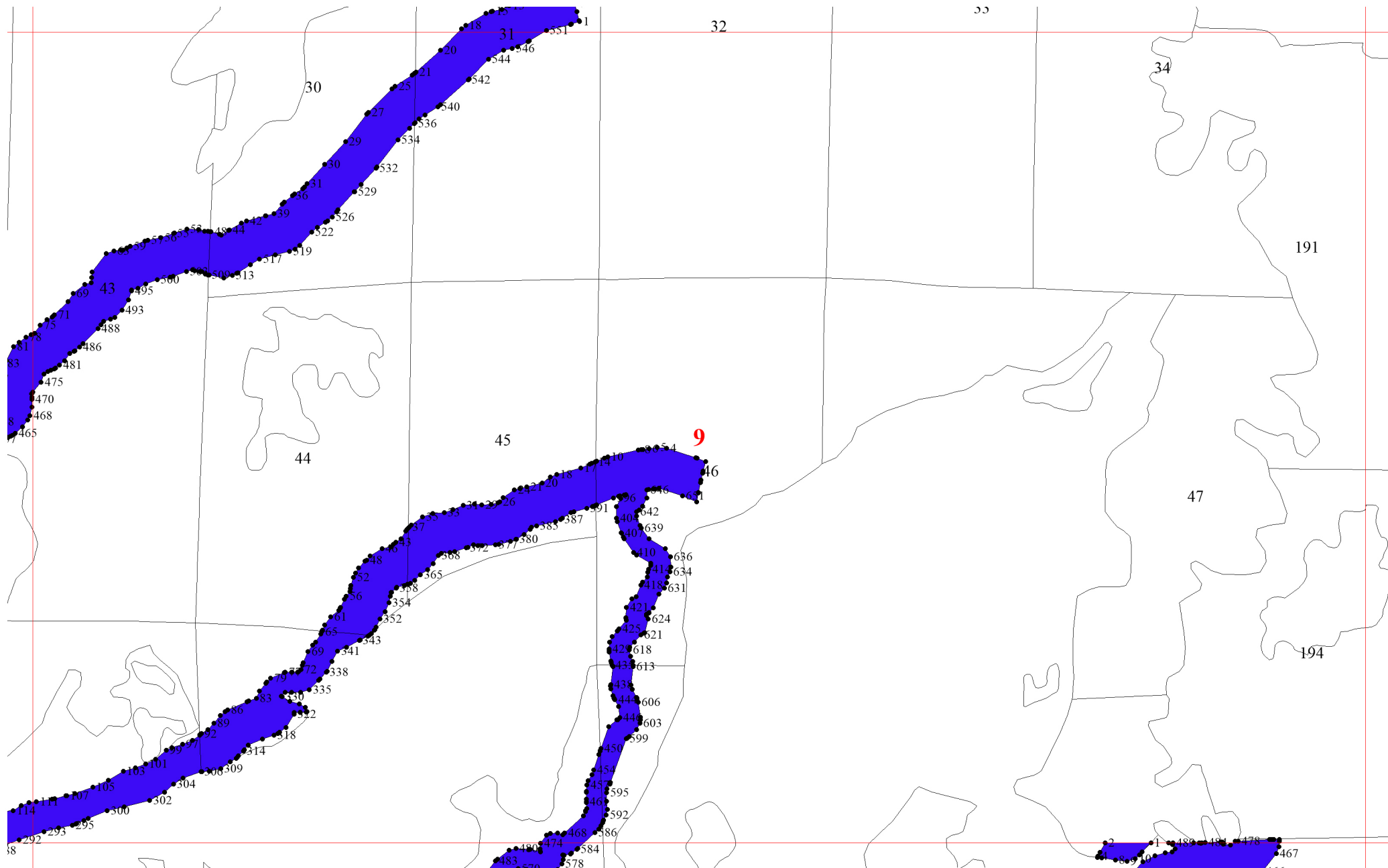


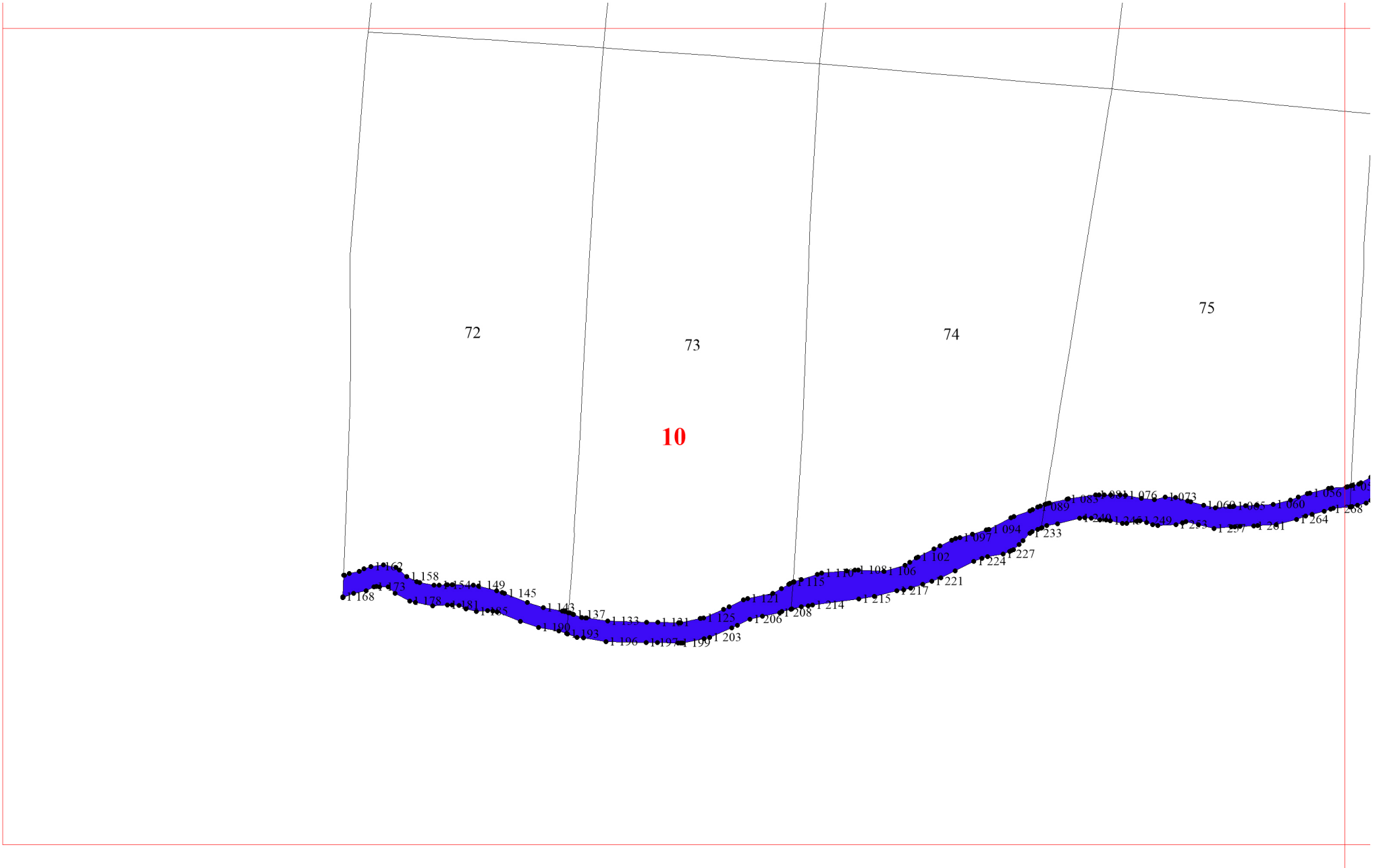


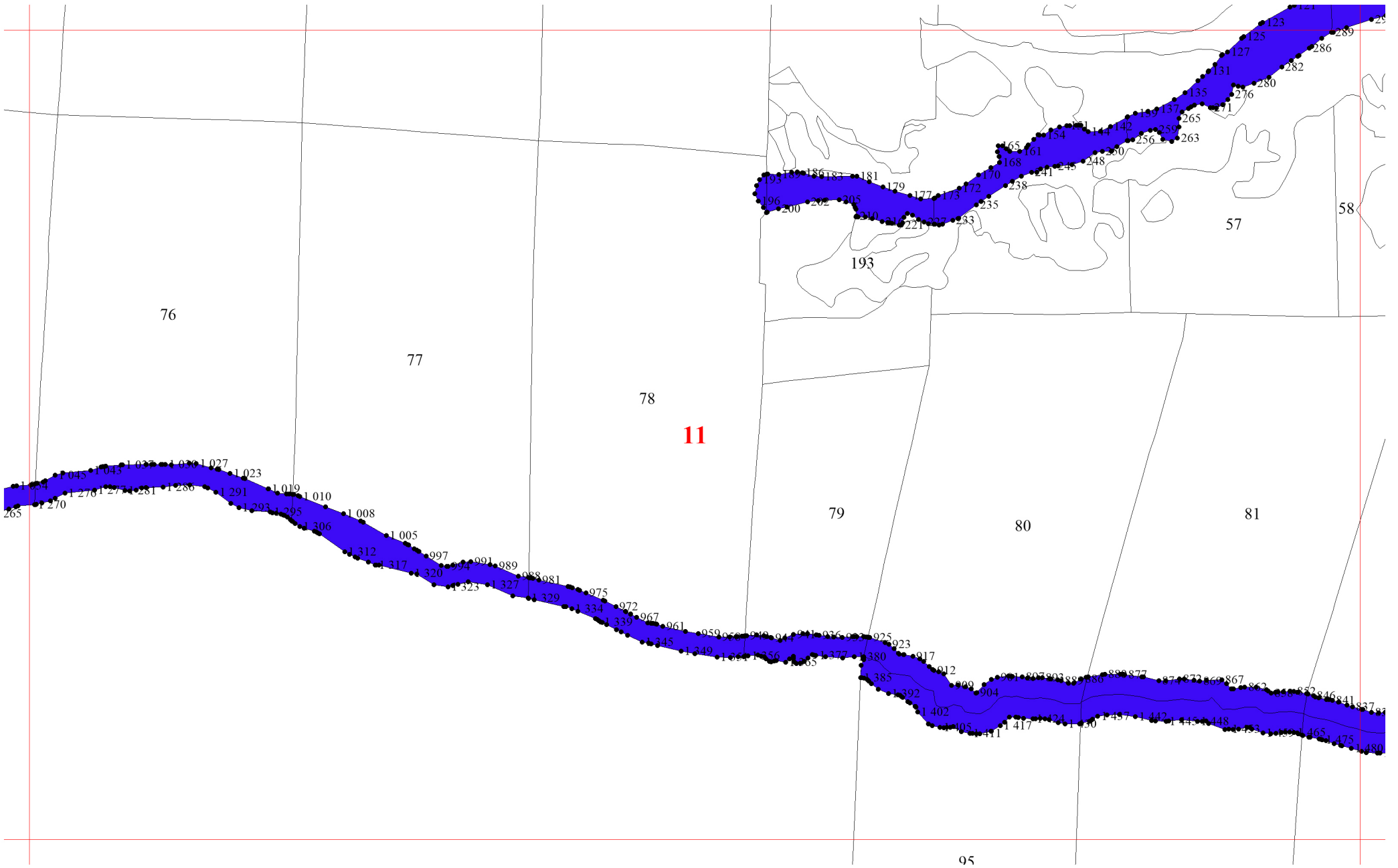


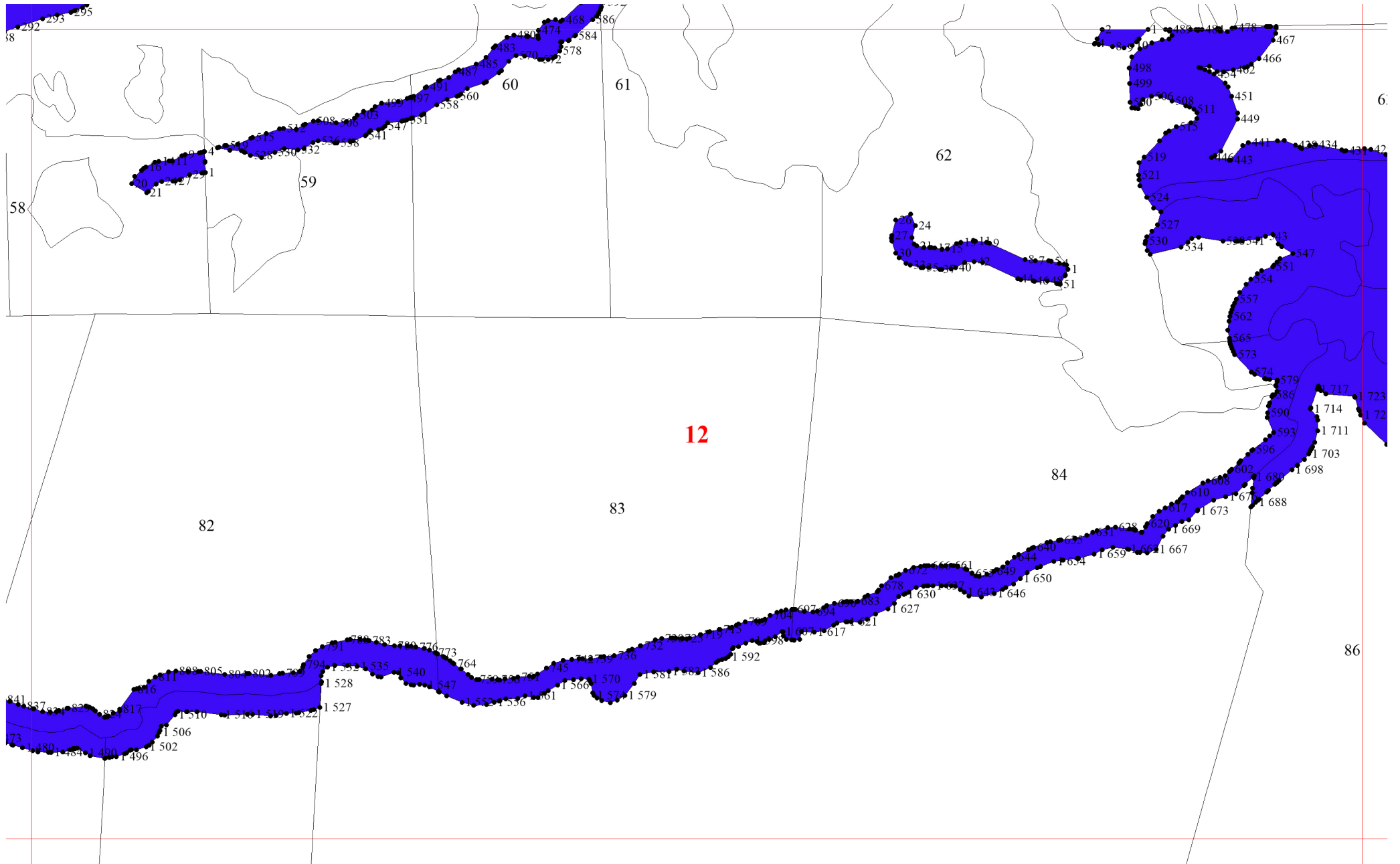


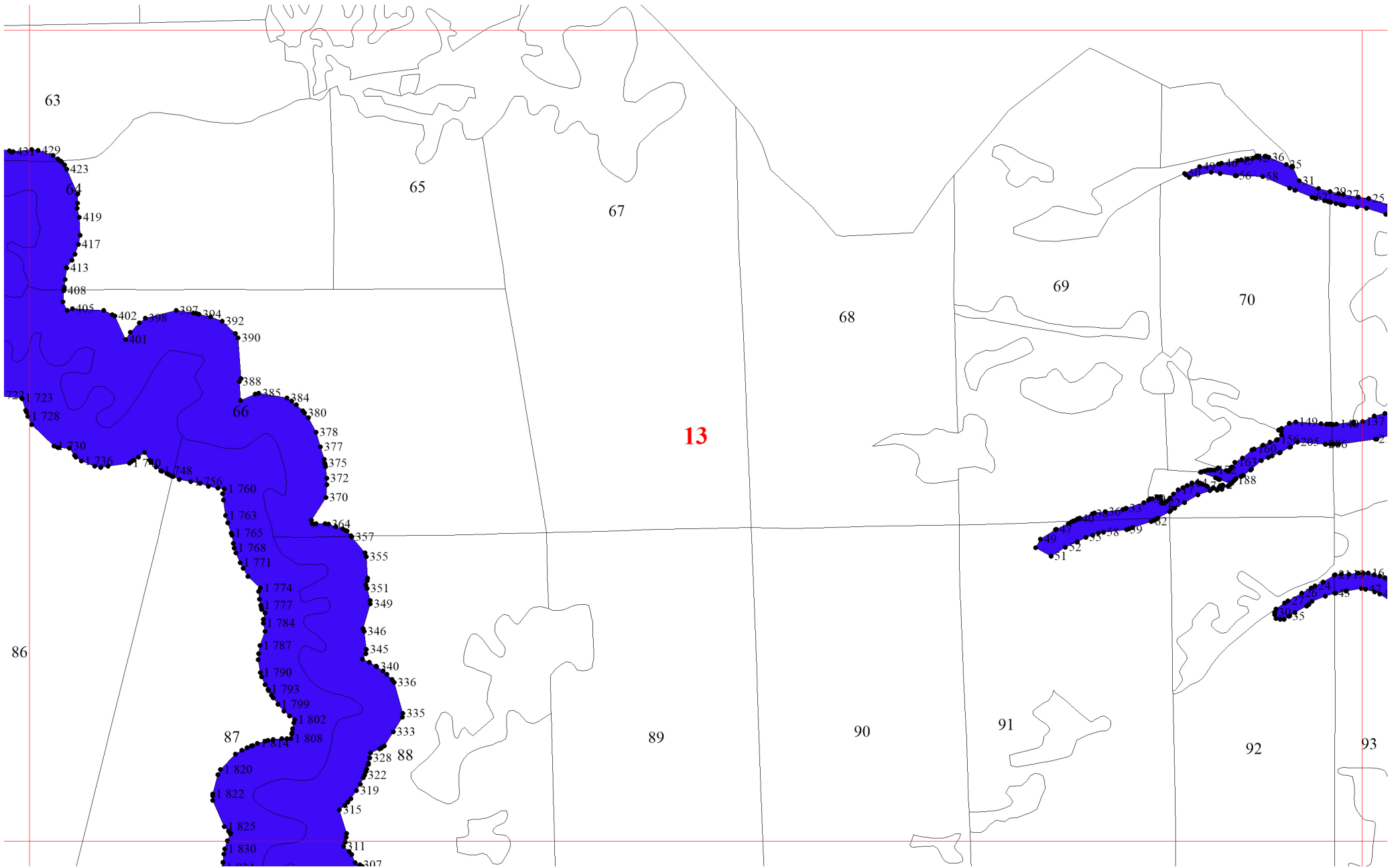


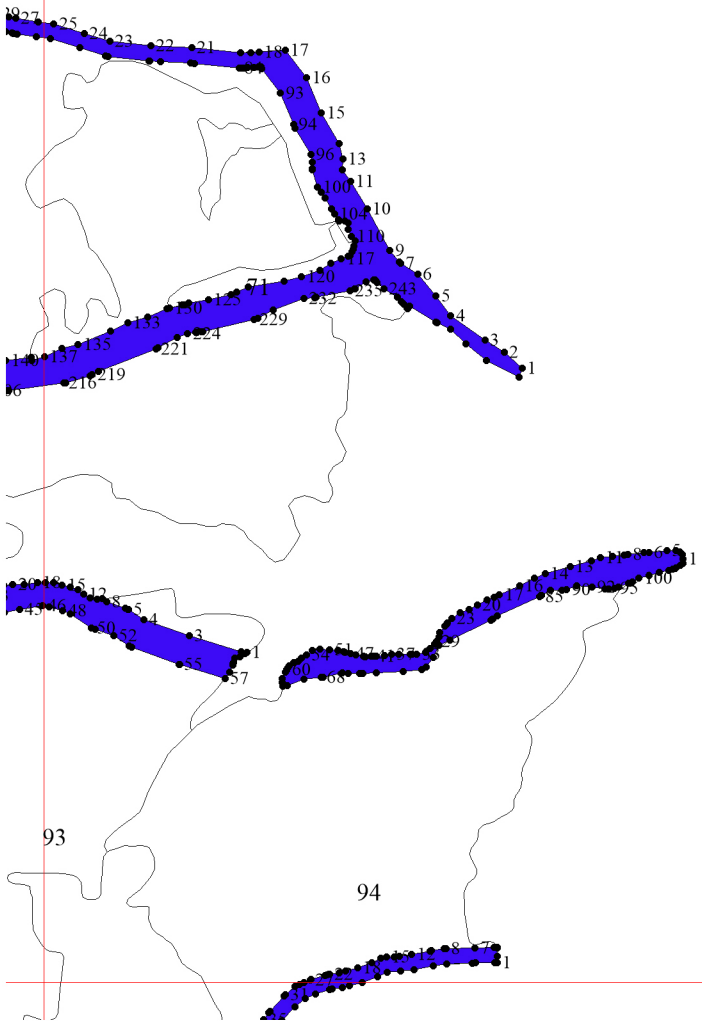






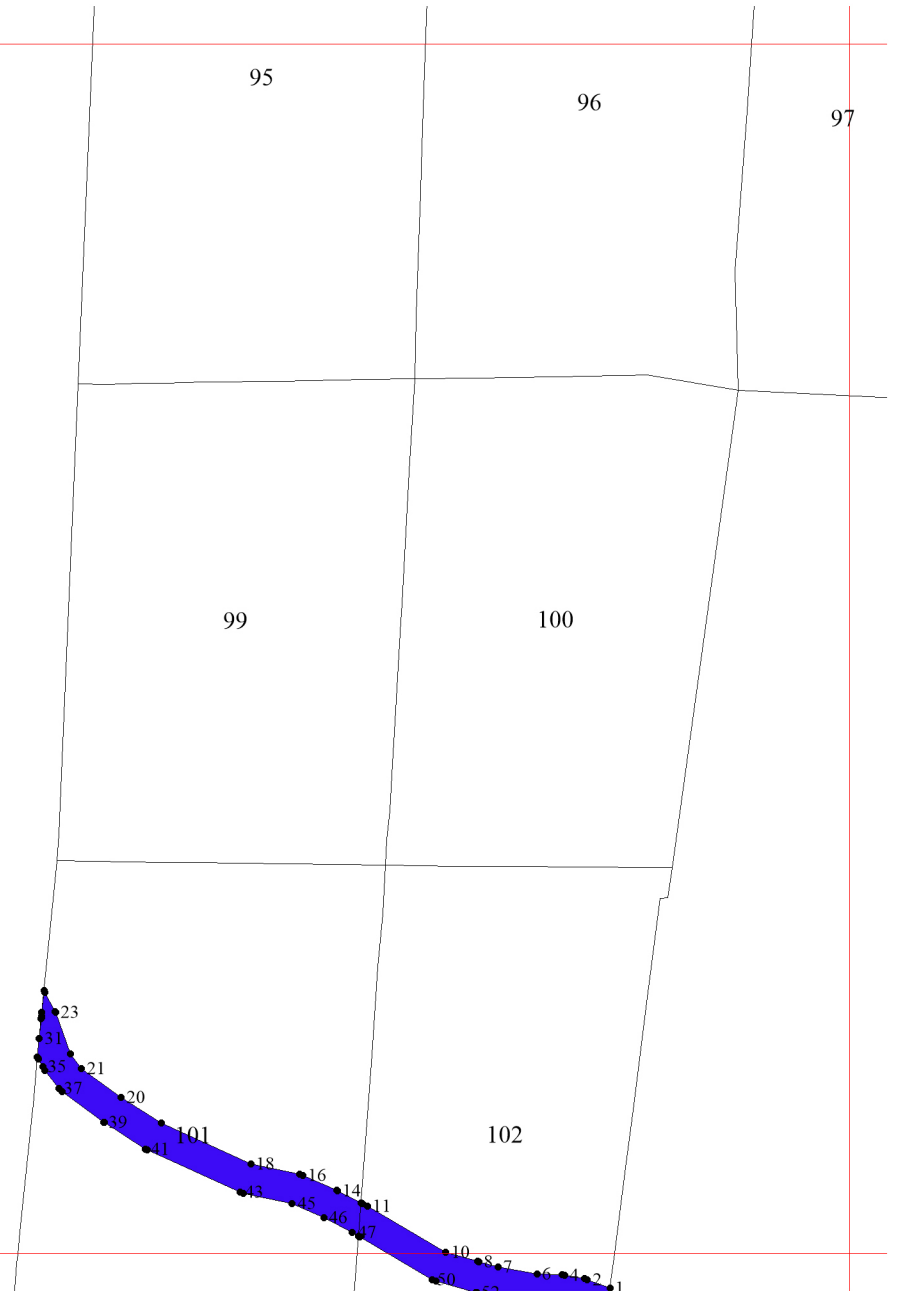


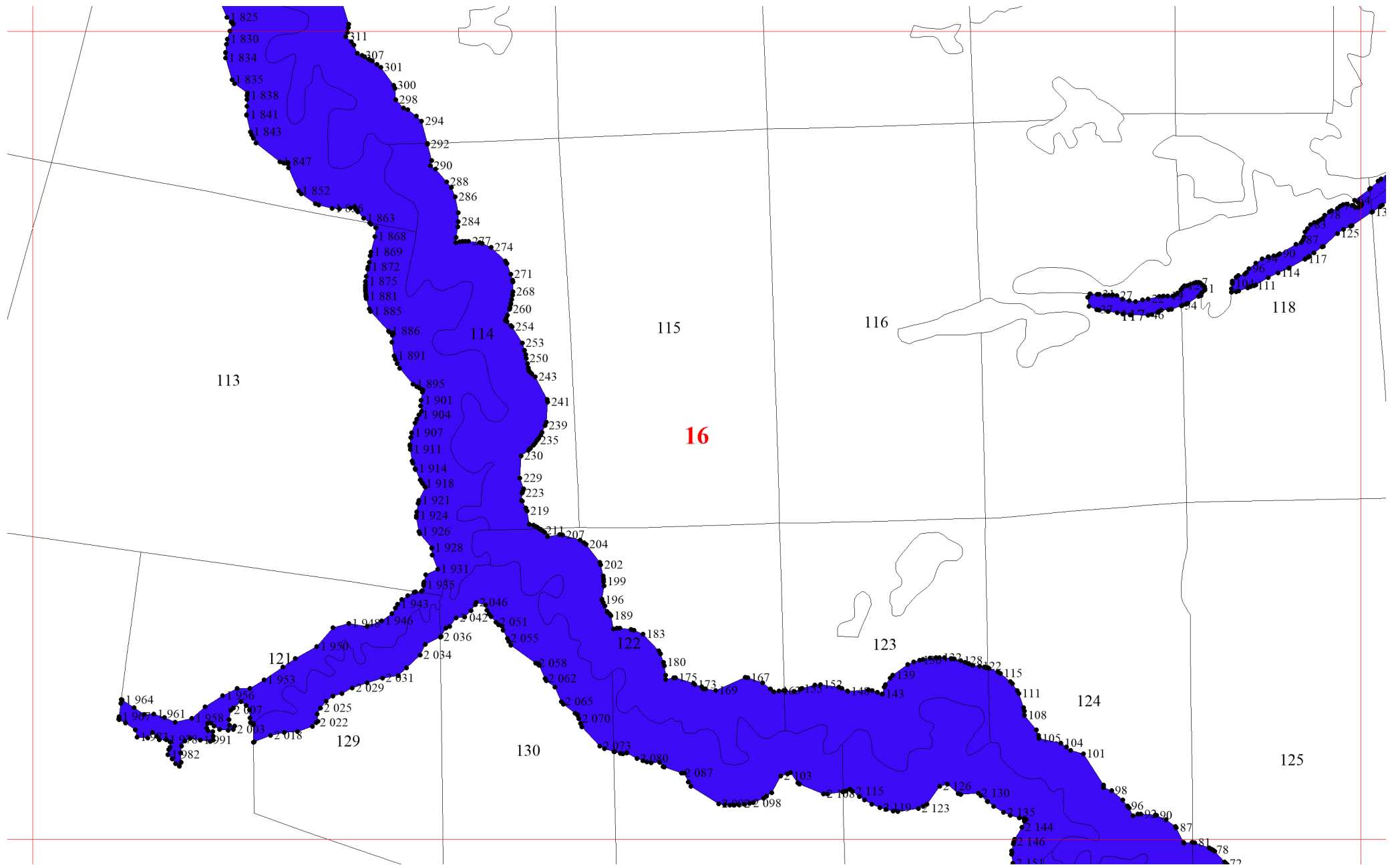


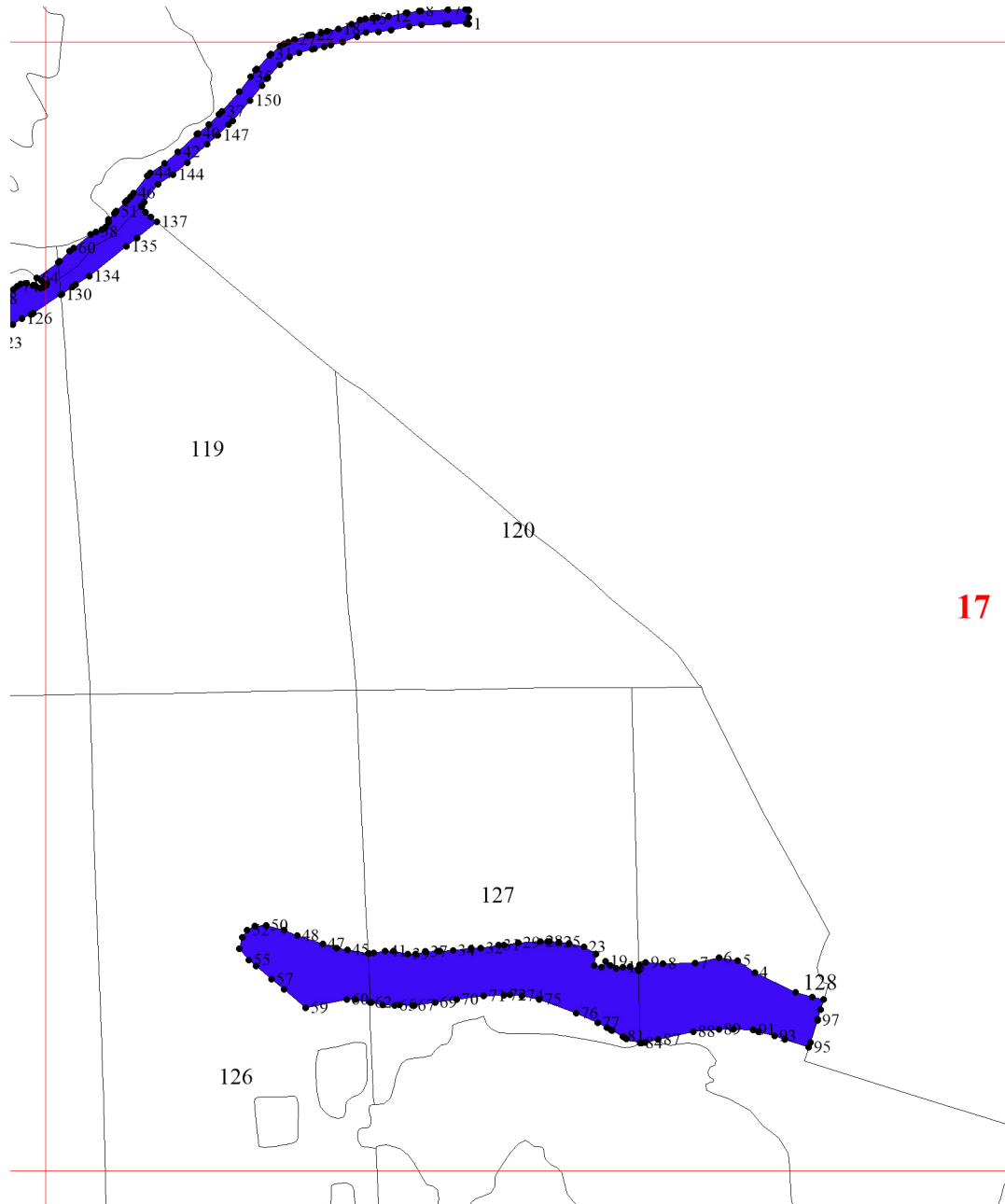


14

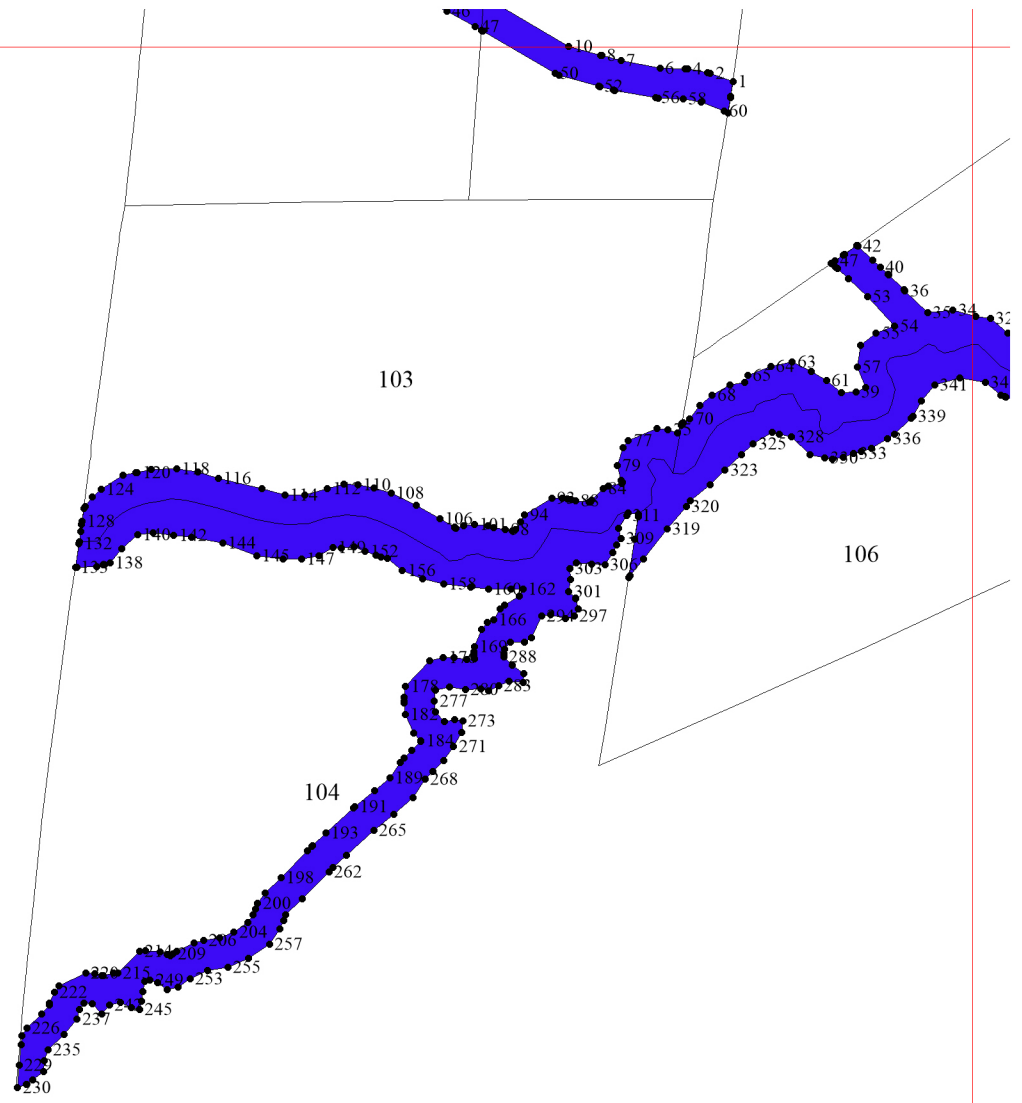
15

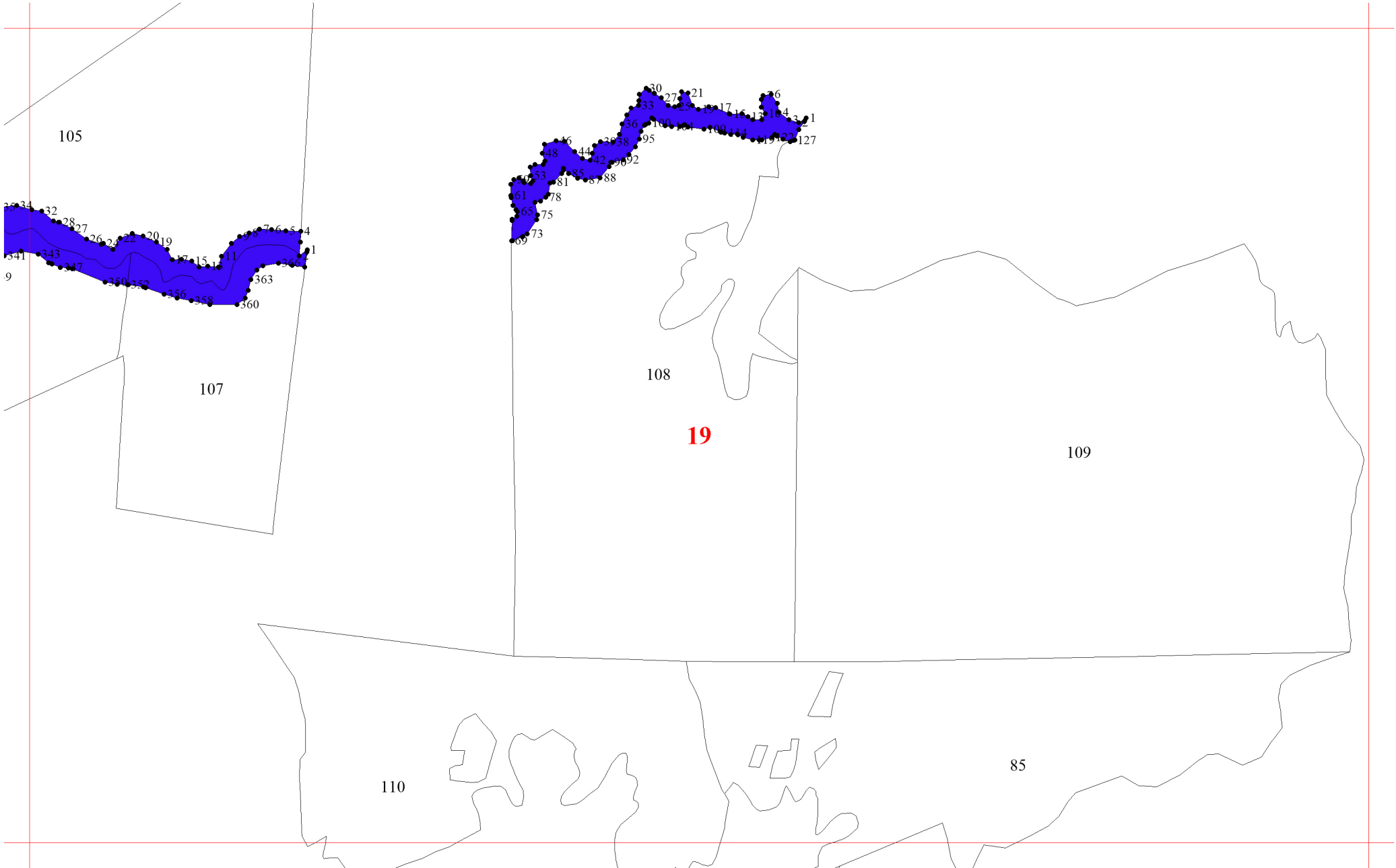


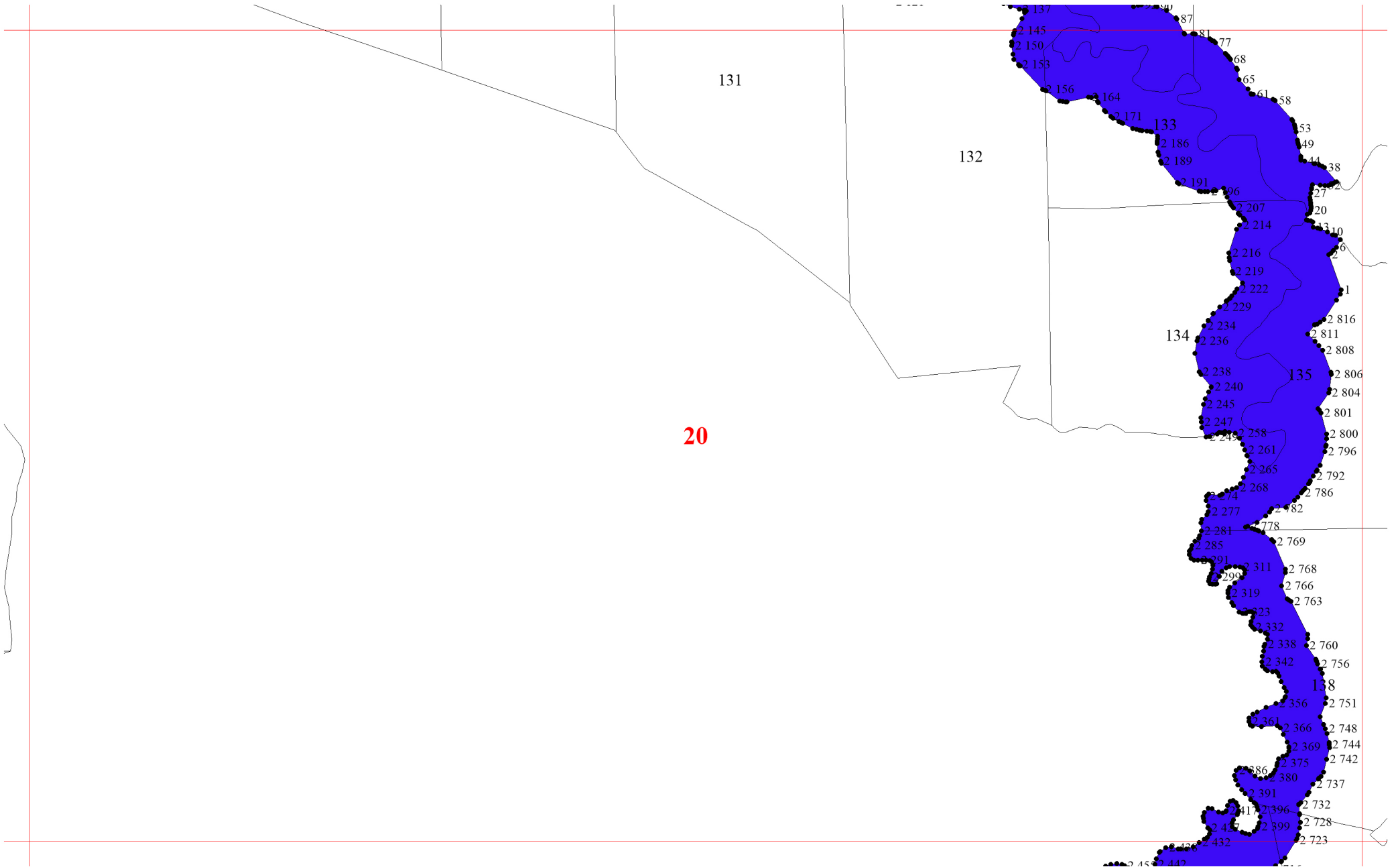


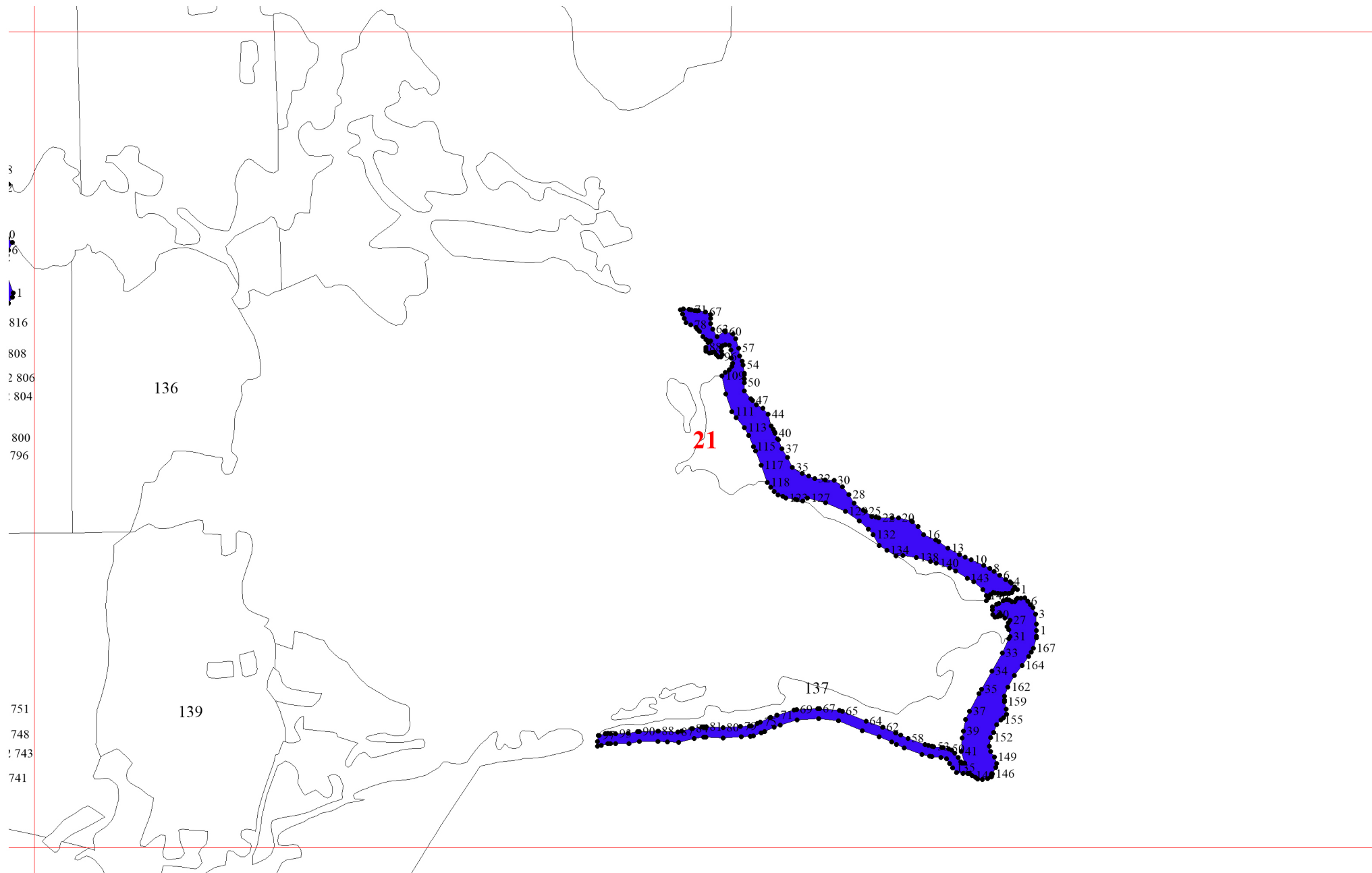


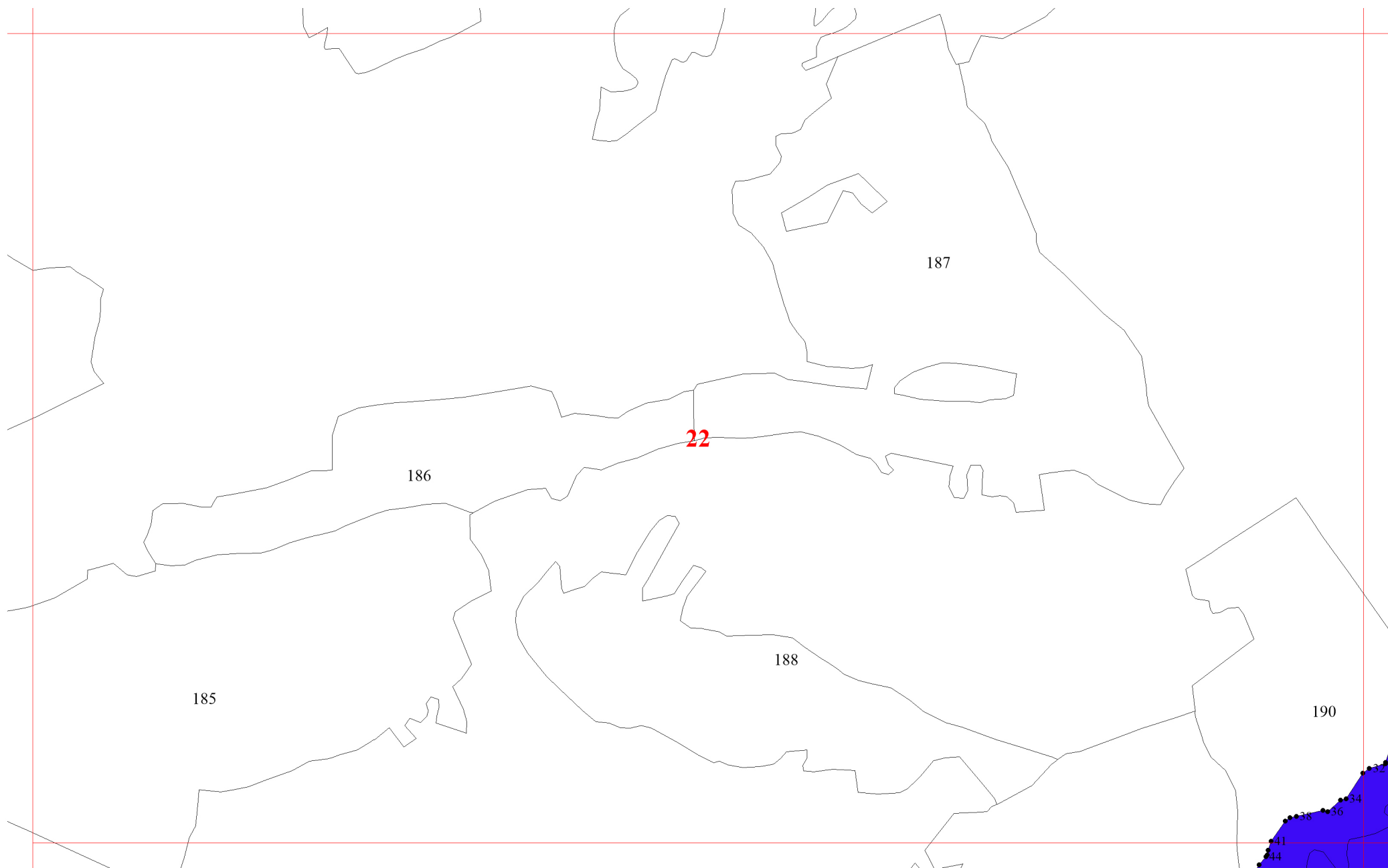
17

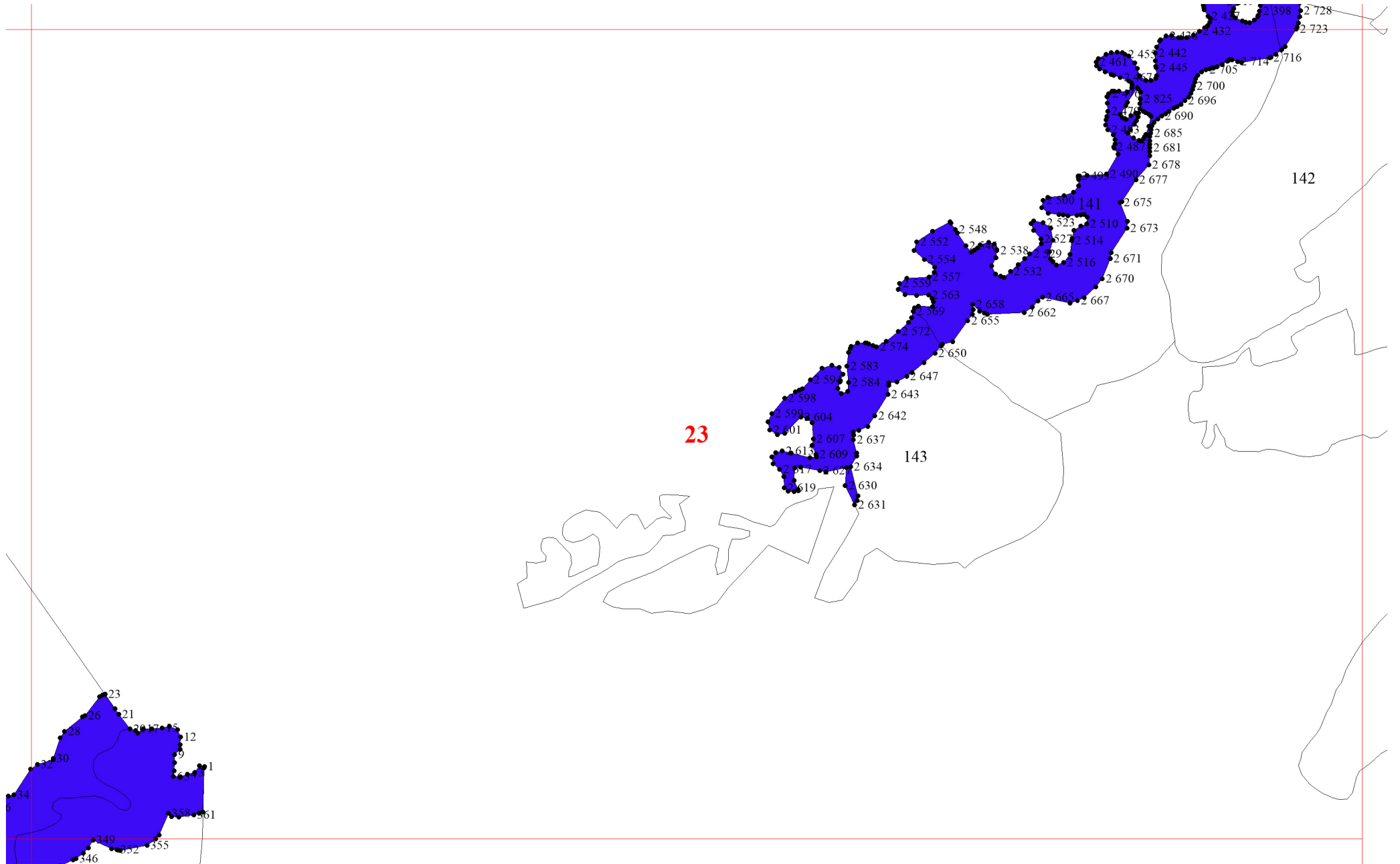


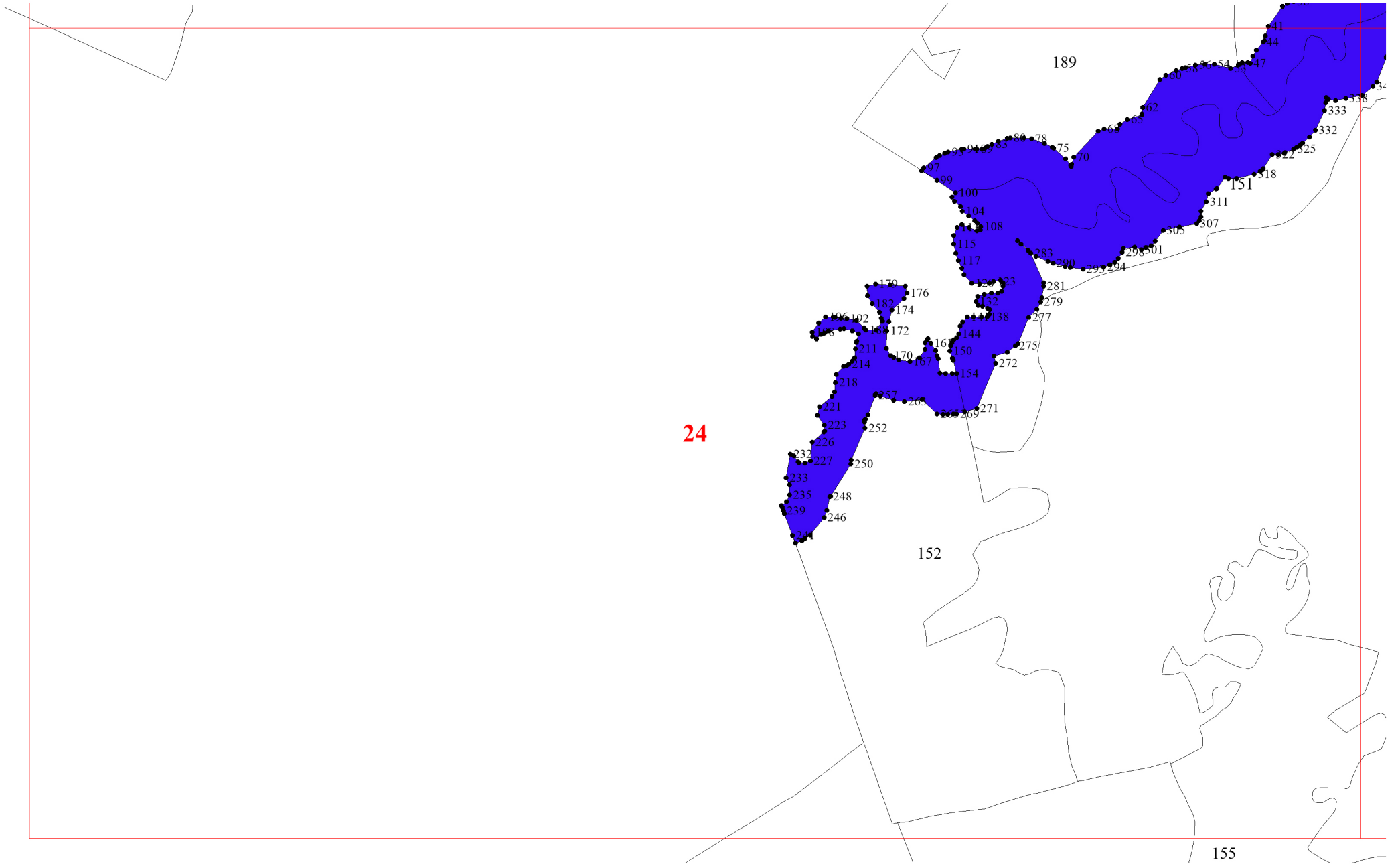


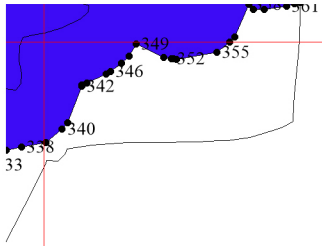












25

147

148