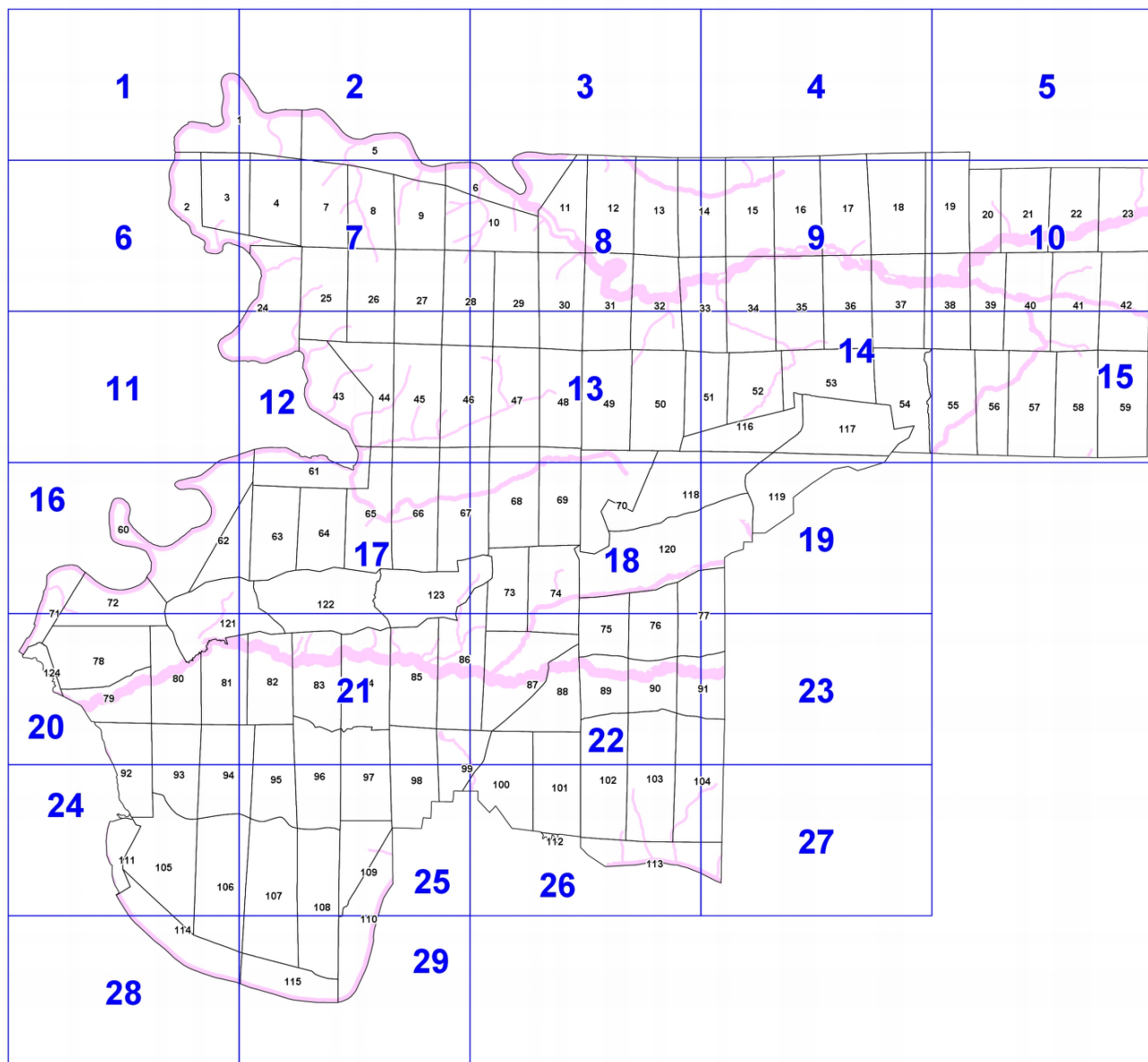


**Графическое описание местоположения границ земель,  
на которых располагаются леса,  
расположенные в водоохранных зонах, на территории  
Ангарского участкового лесничества  
Гремучинского лесничества  
Красноярского края**

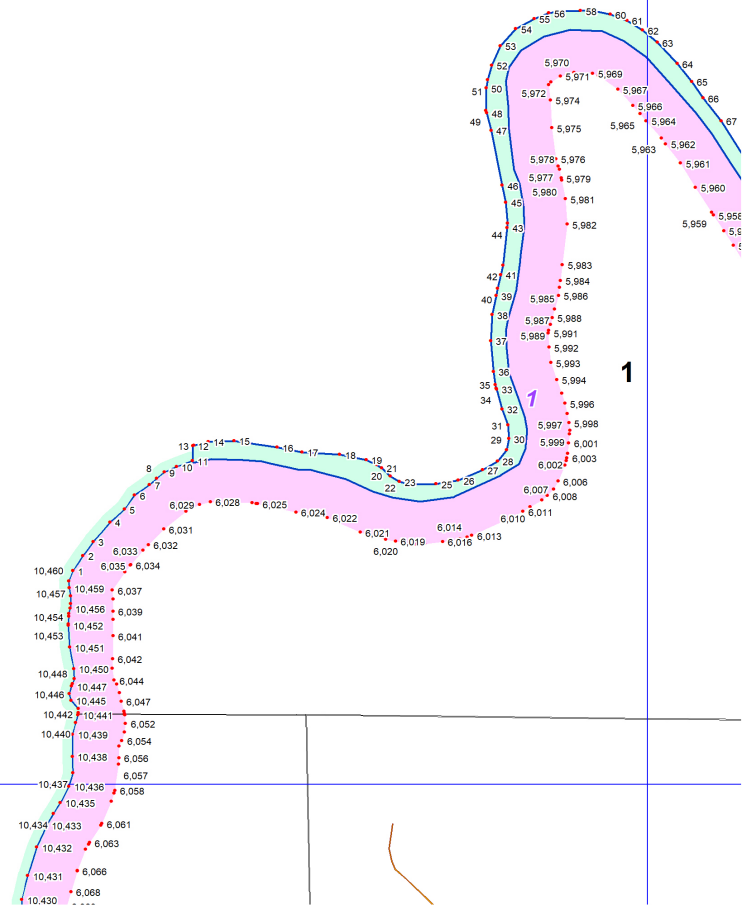
Приложение № 2 к приказу Рослесхоза  
от 28.05.2024 № 368



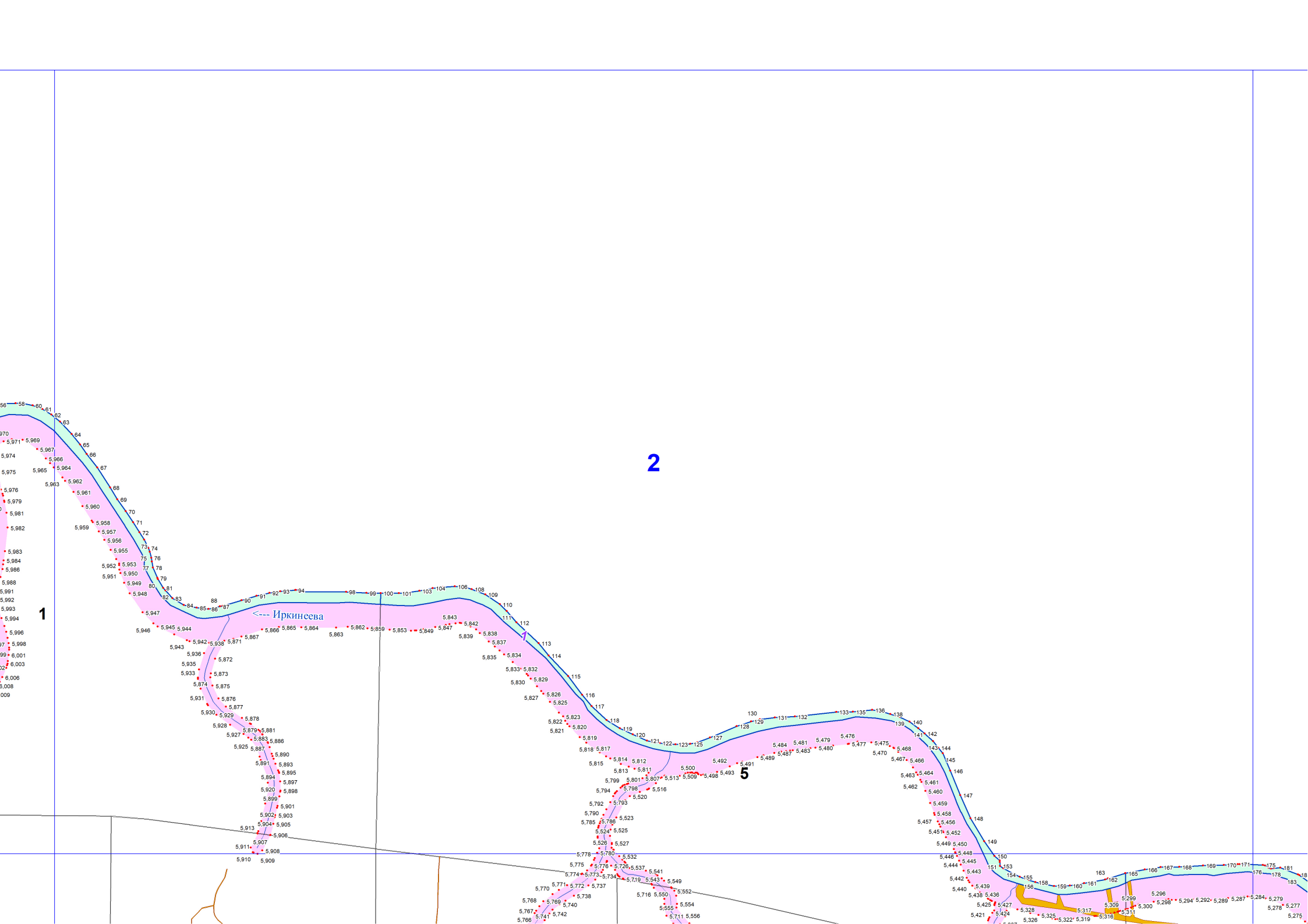
**Условные обозначения:**

- 1** номера листов
- 3** номера контуров
- 37** номера лесных кварталов
- границы лесных кварталов
- границы листов
- границы категории защитных лесов
- 88 номера характерных точек границ объекта

1



1

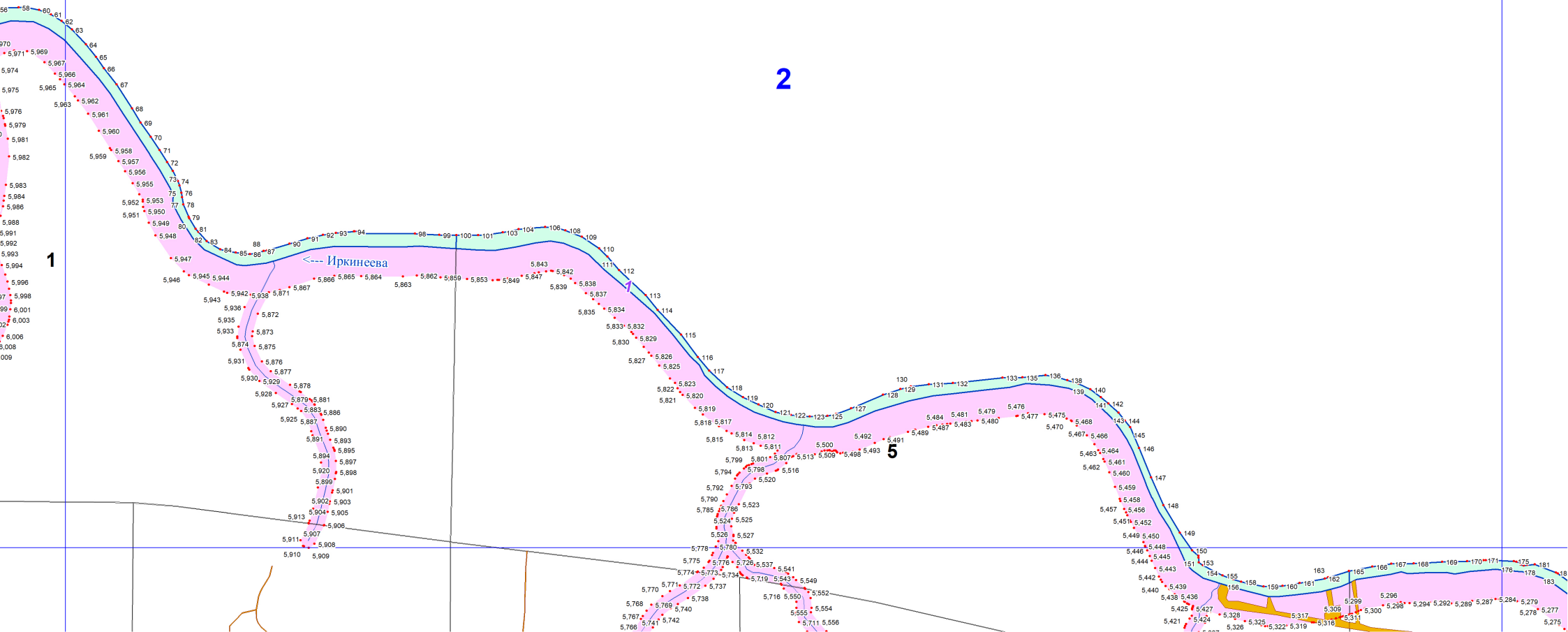


1

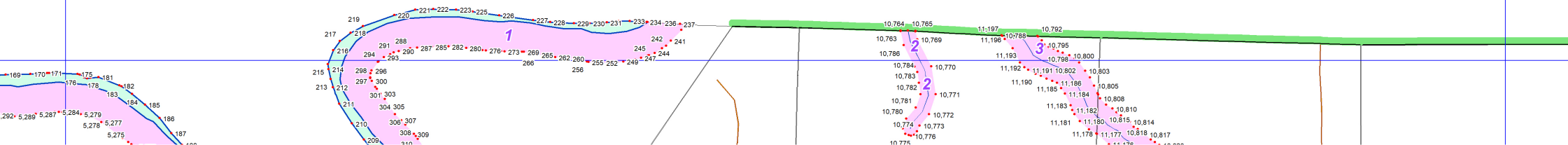
2

5

Иркинсева



3



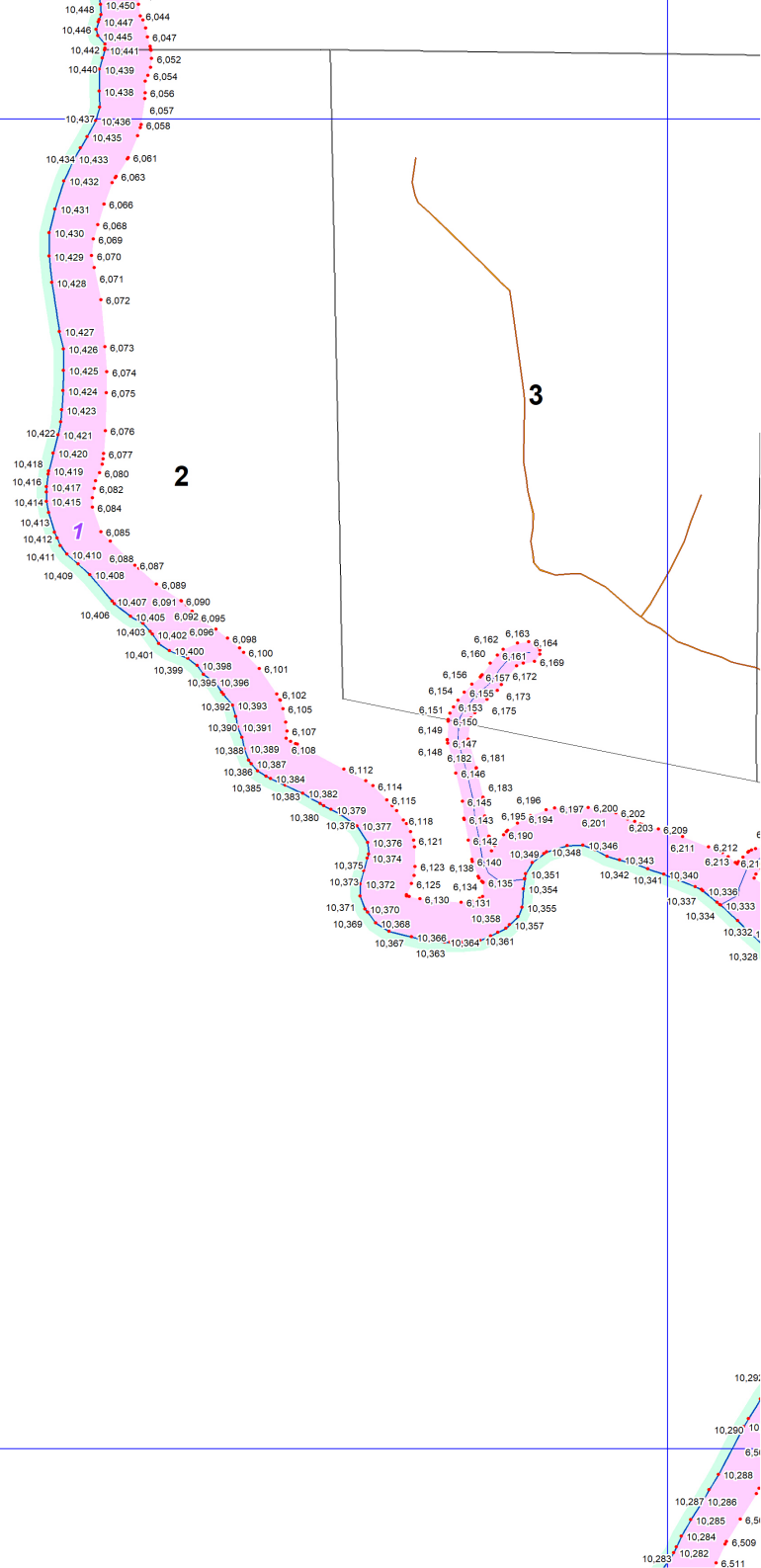
4

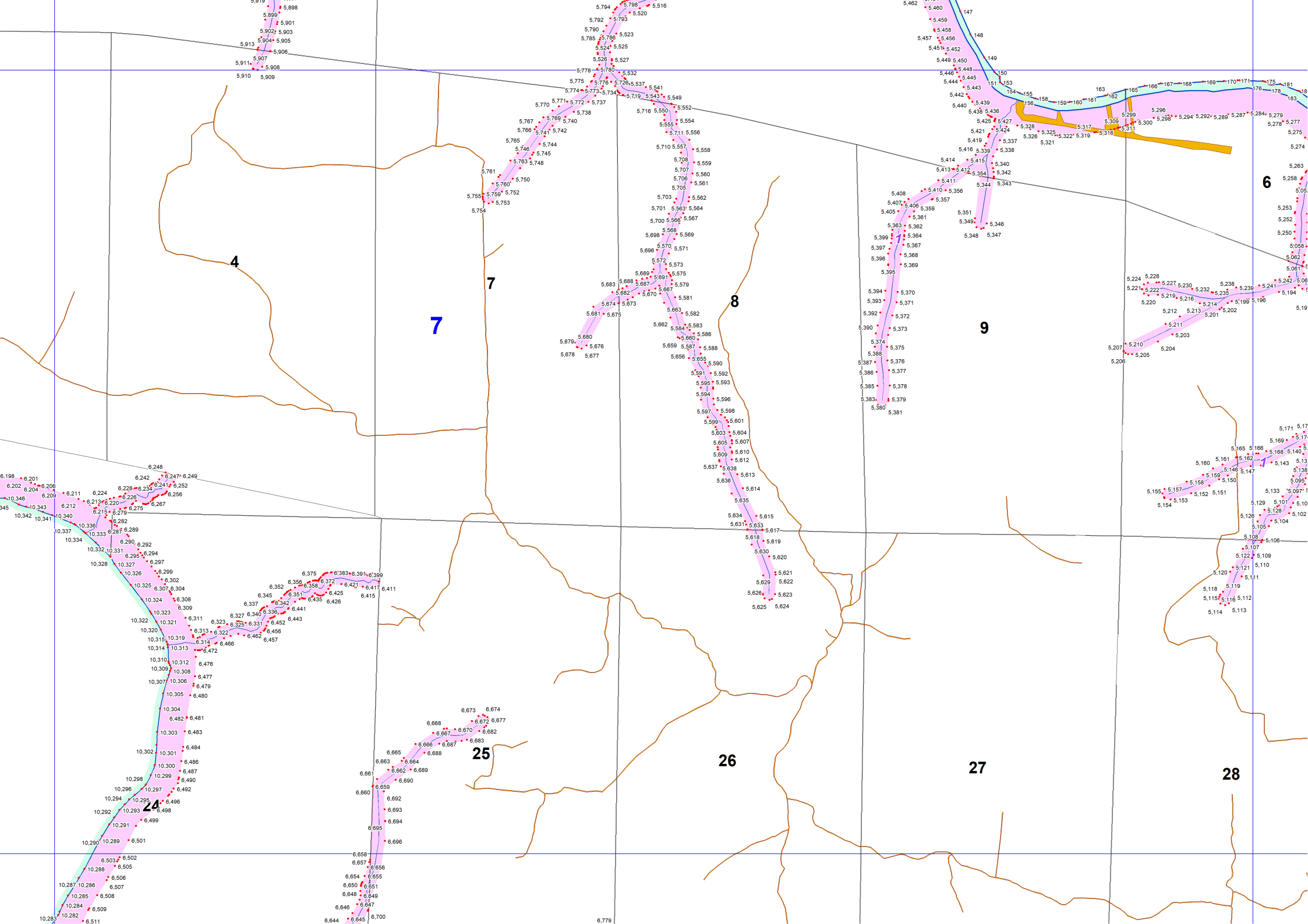


5

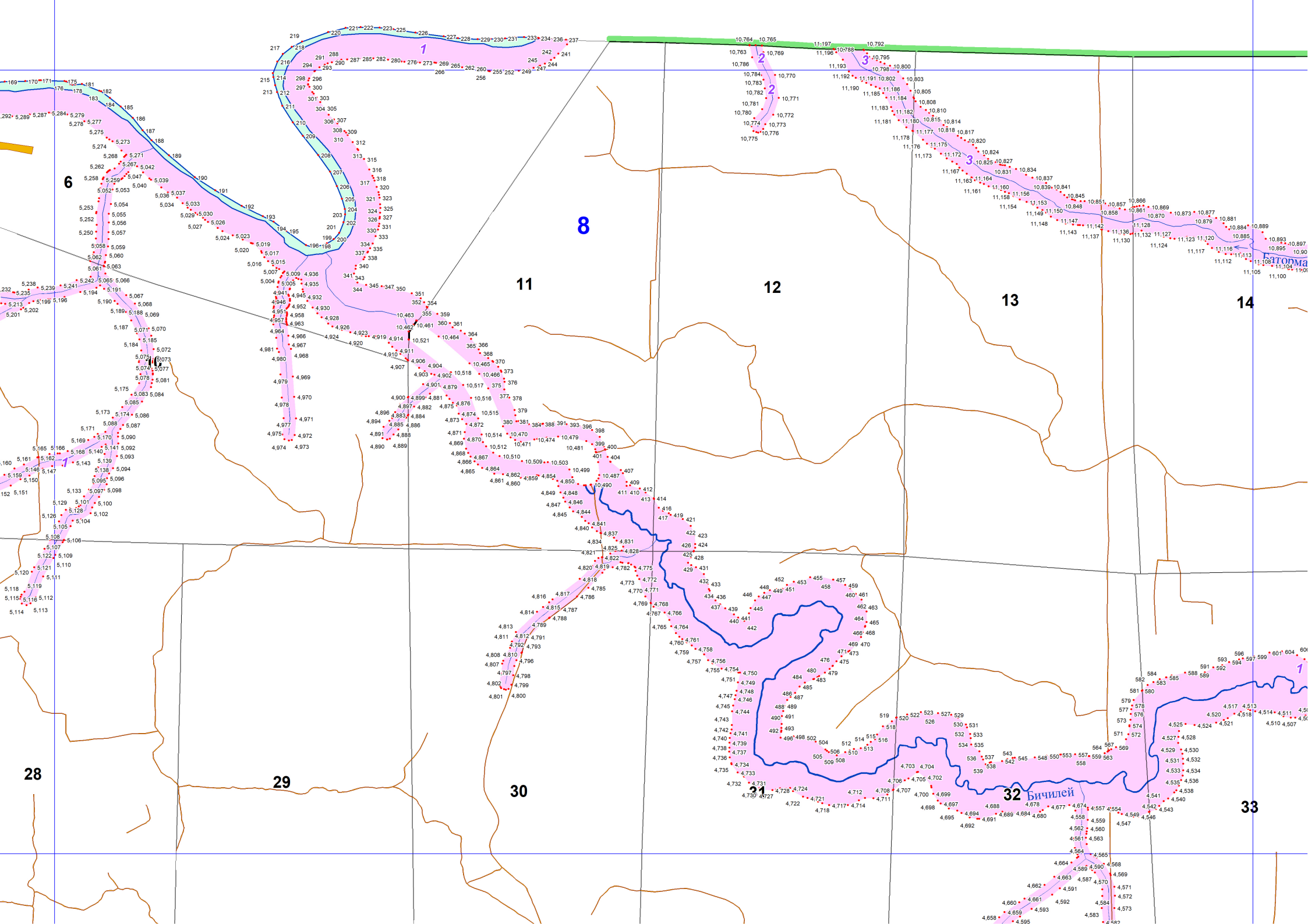
1.288 1.290  
1.282 1.285 1.309  
1.281 1.280  
1.278 1.277

6









6

8

11

12

13

14

28

29

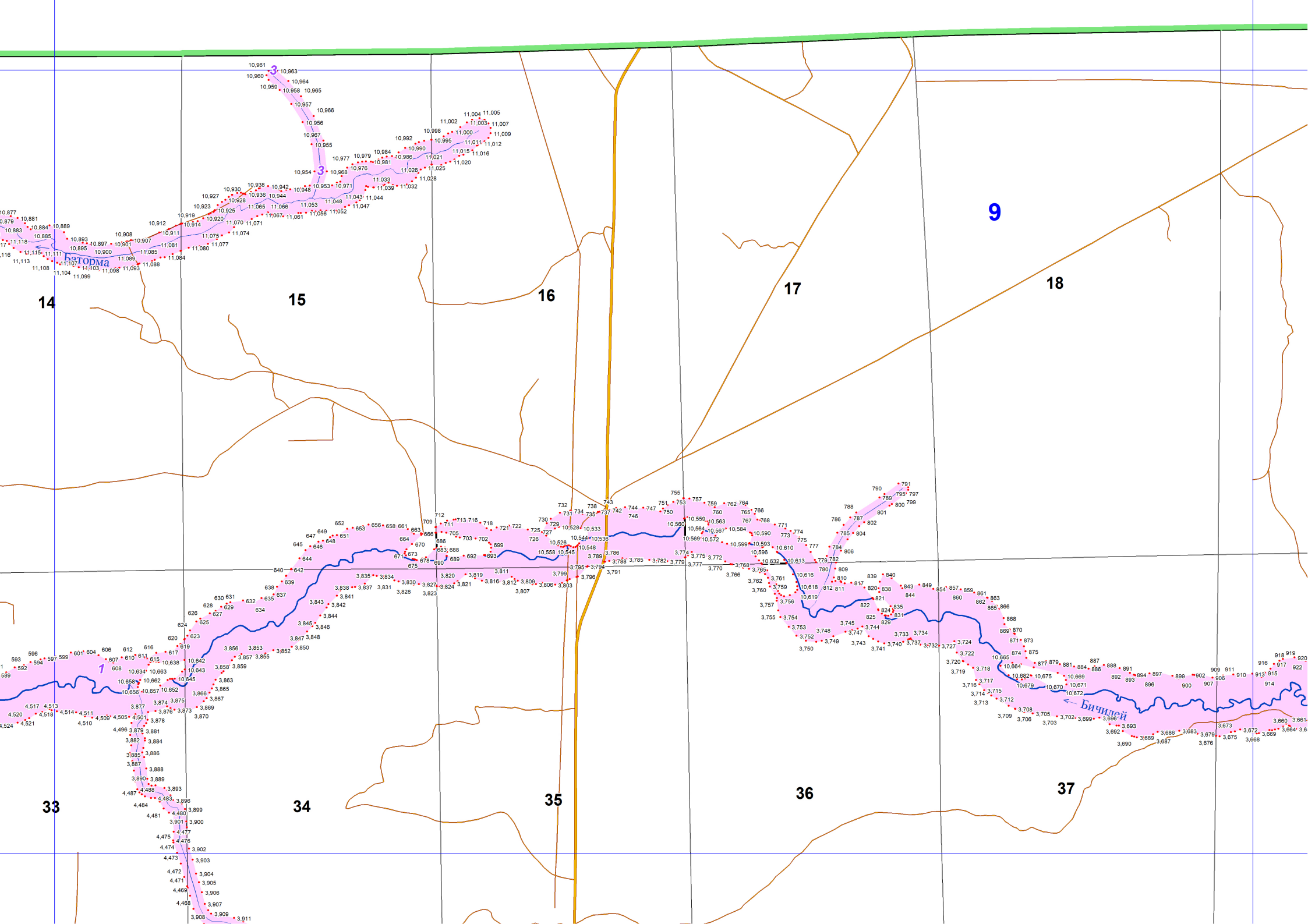
30

32

33

Бичилей

Бичилей



14

15

16

17

9

18

33

34

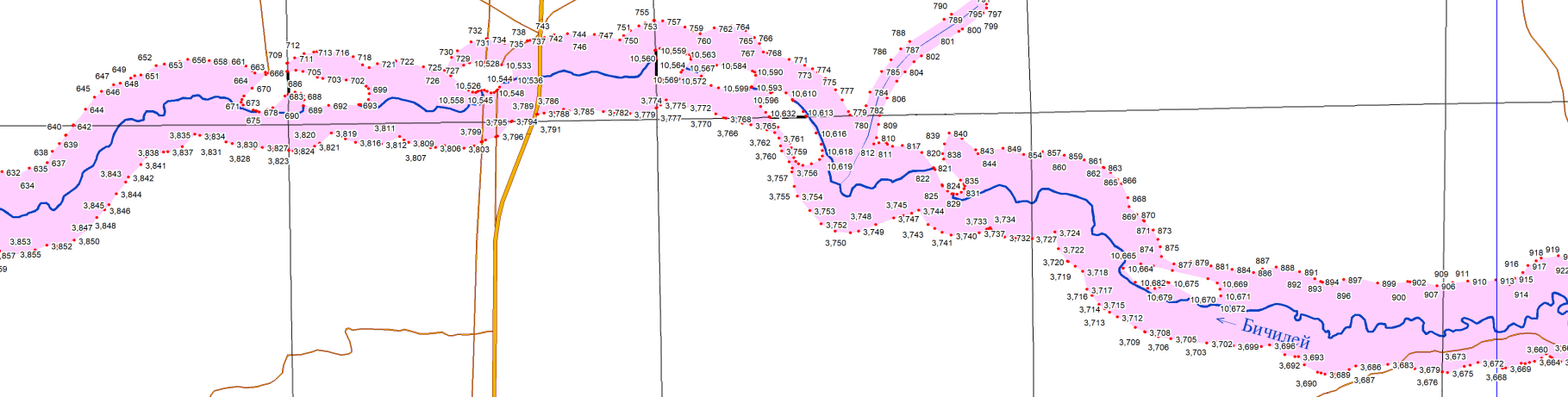
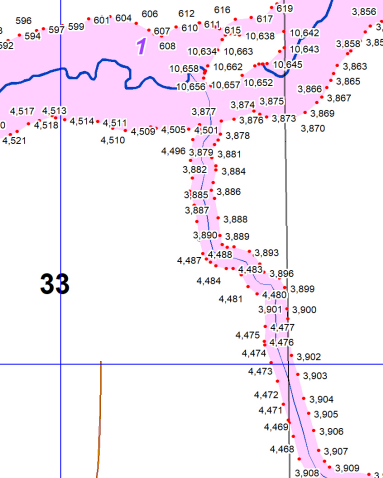
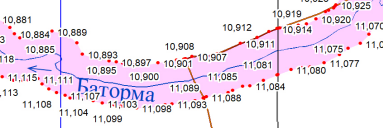
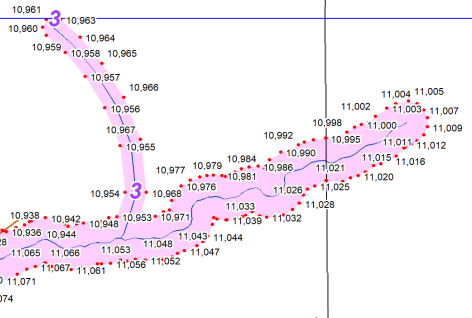
35

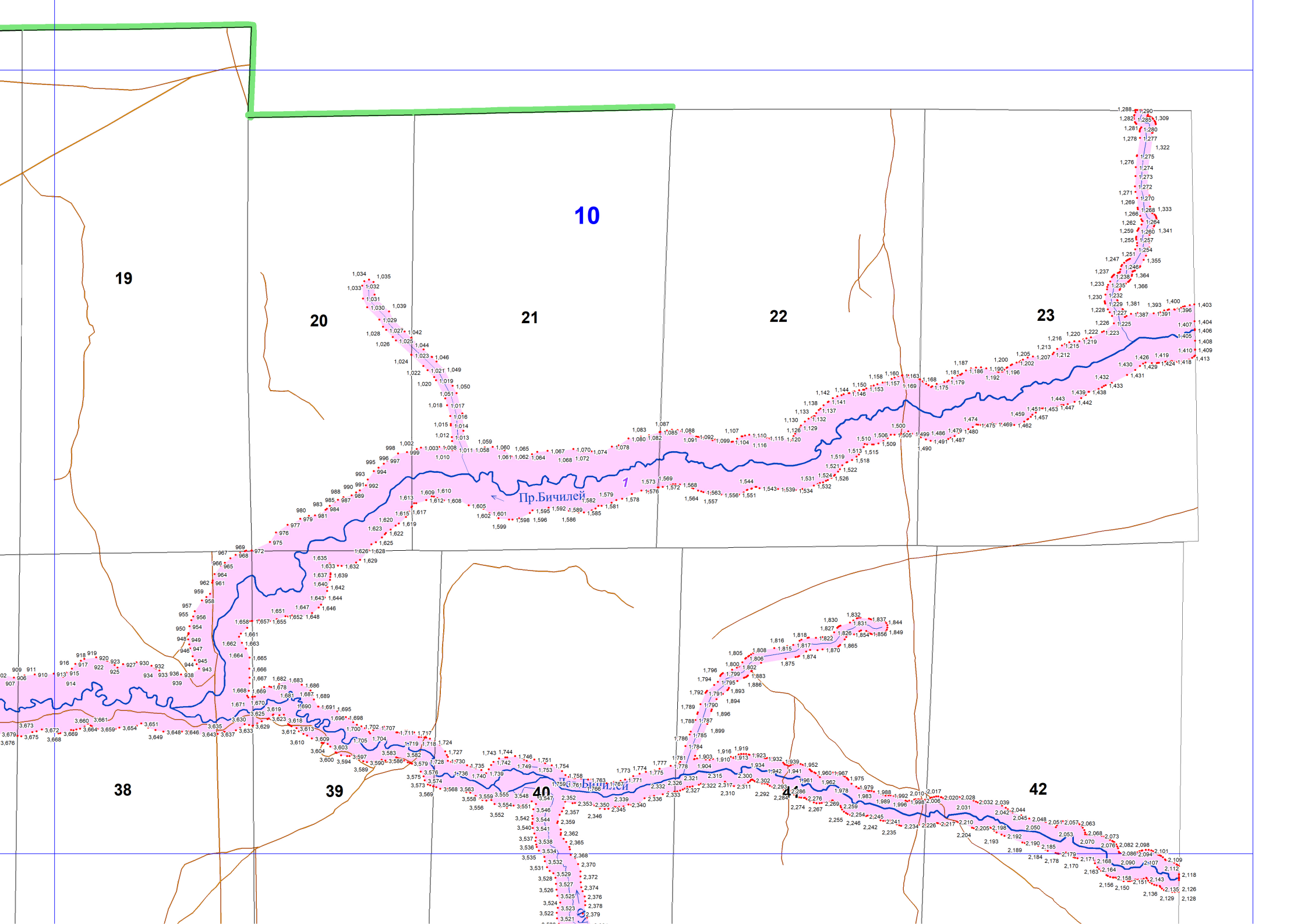
36

37

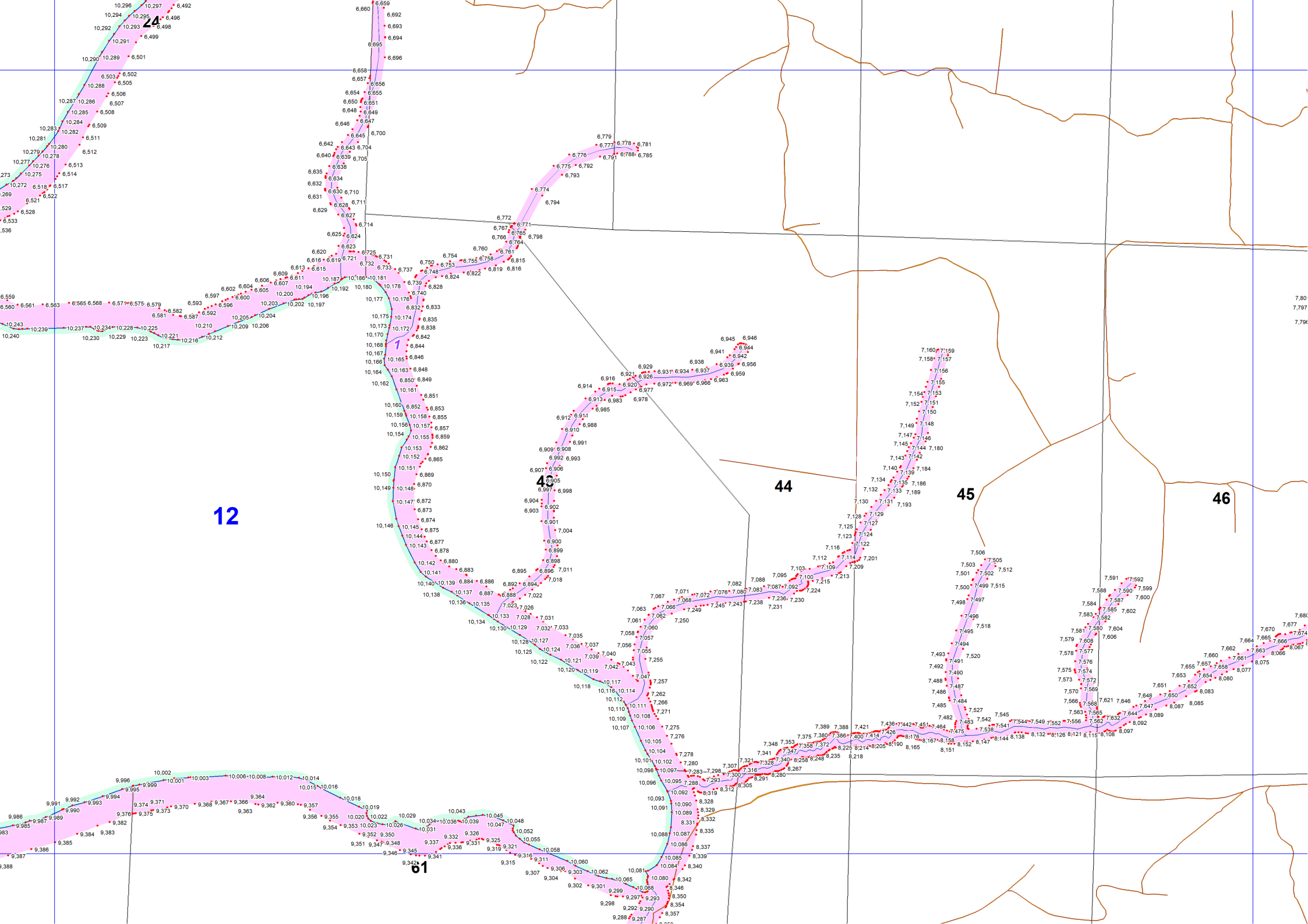
Биродма

Бичишай









12

44

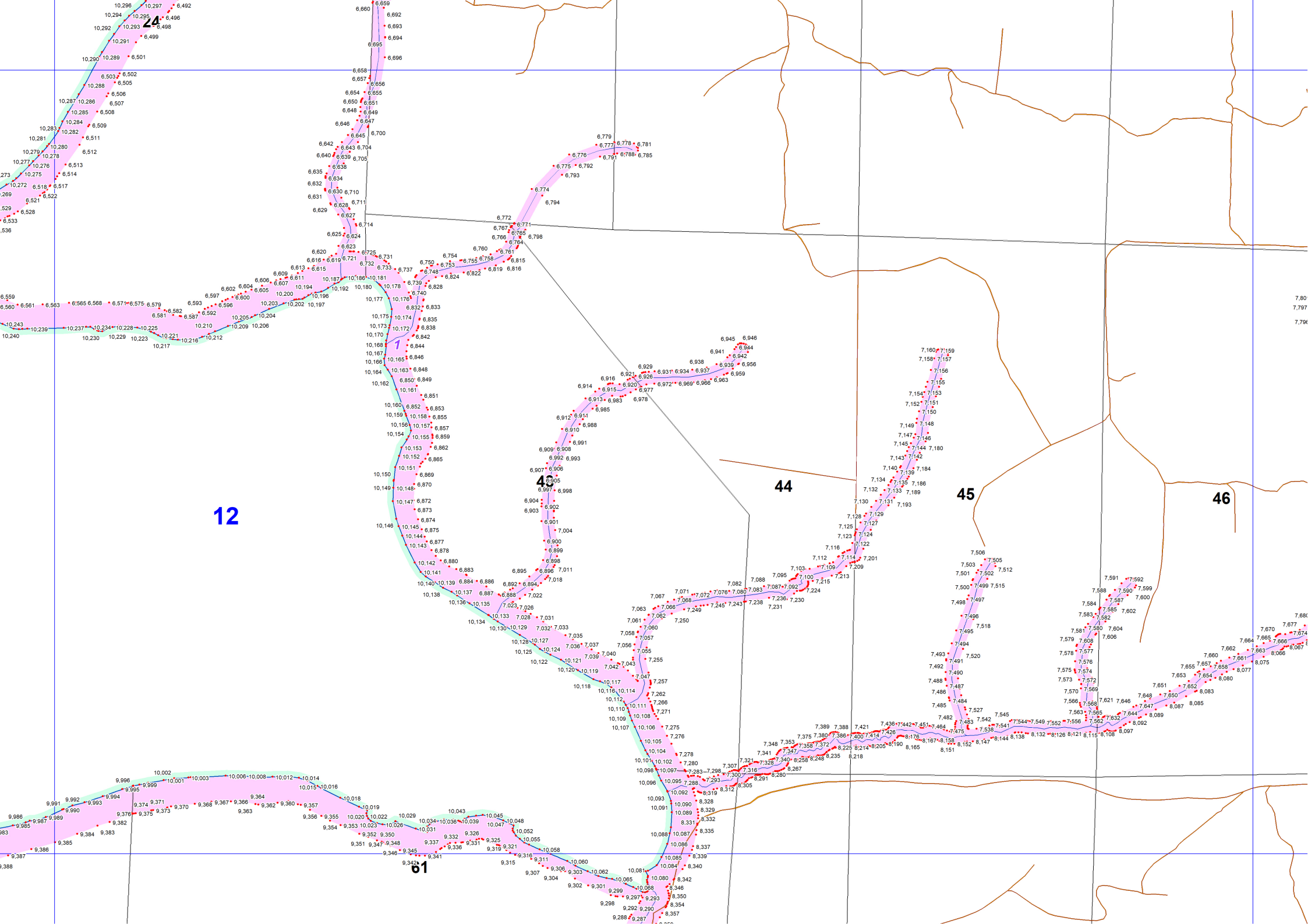
45

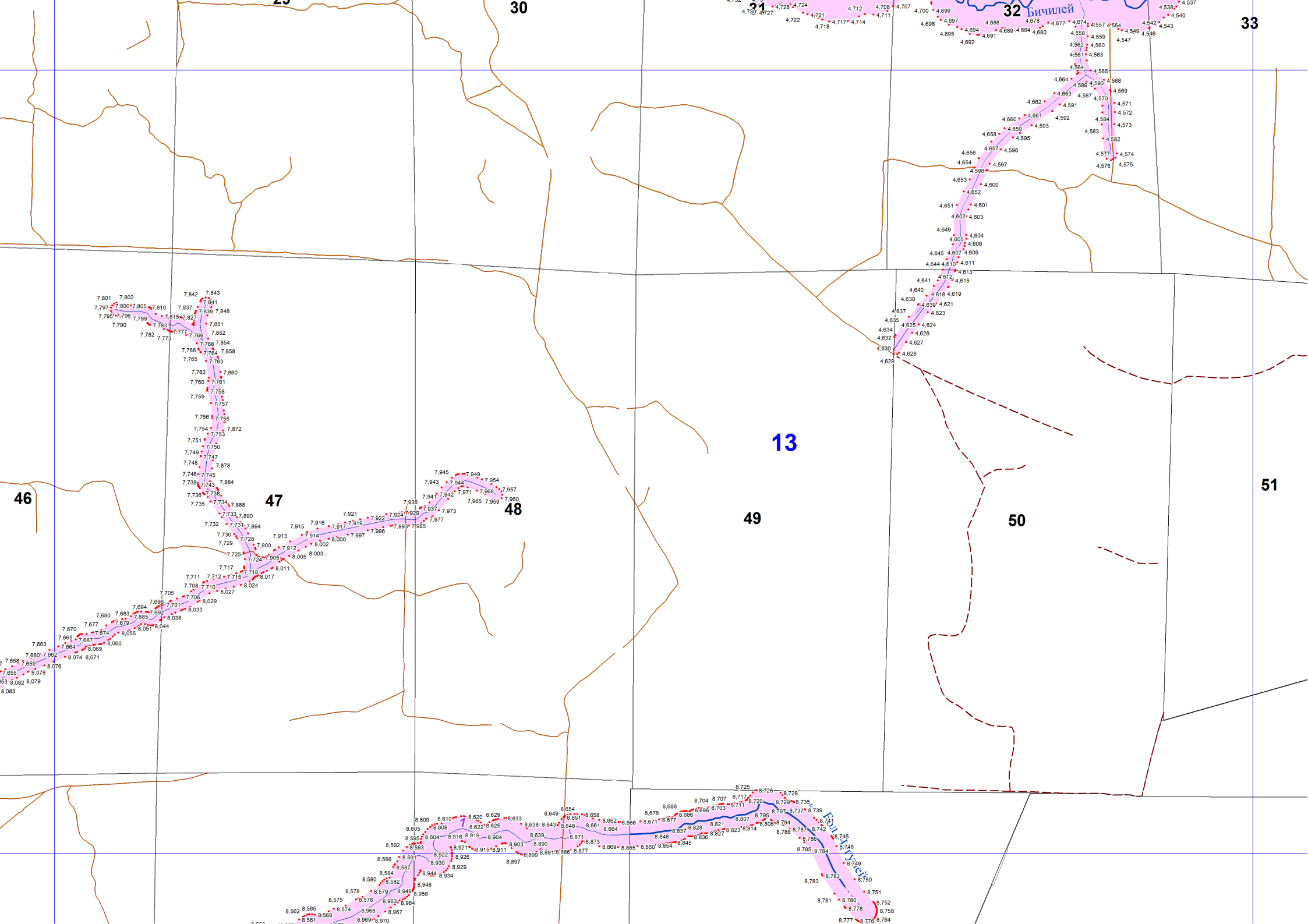
46

24

43

61





30

31

32 Бичилей

33

13

49

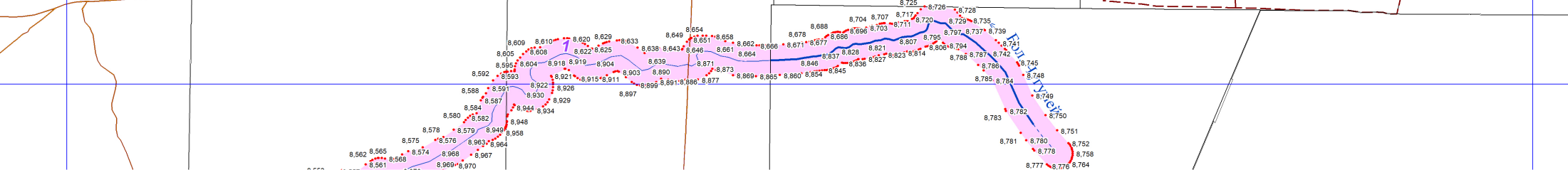
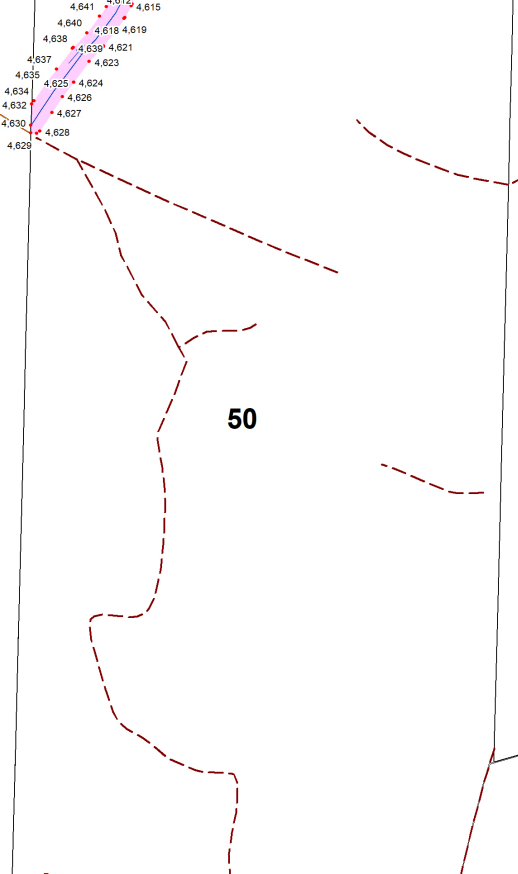
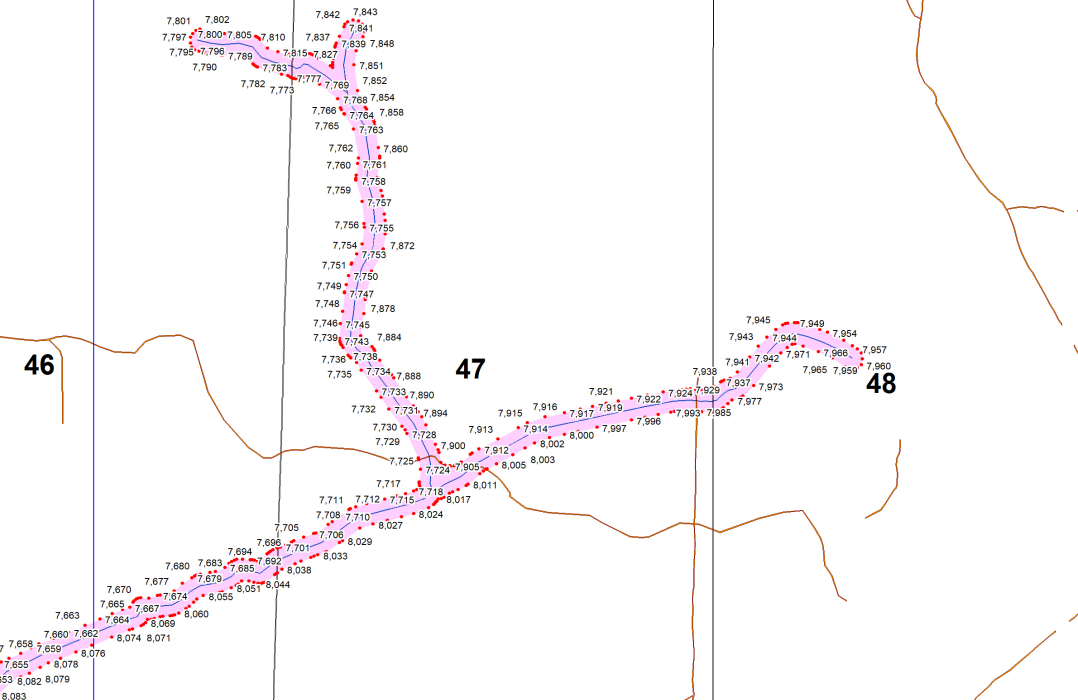
51

50

46

47

48



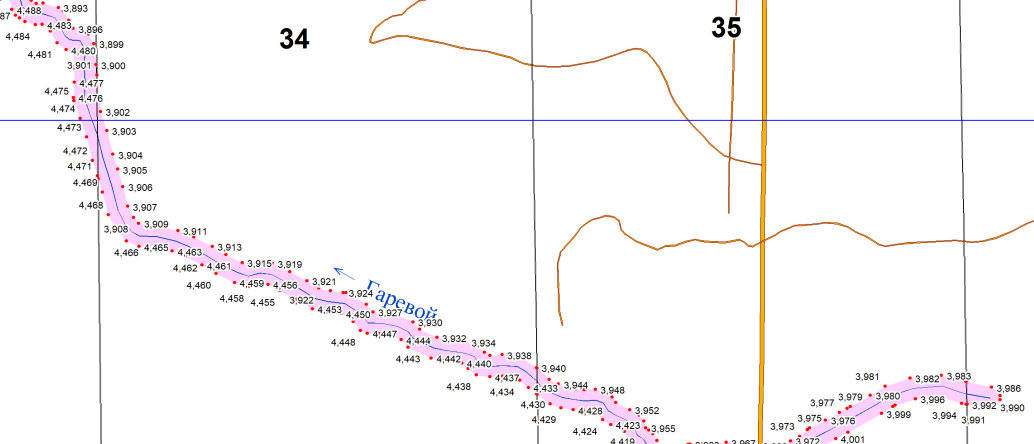
33

34

35

36

37



51

52

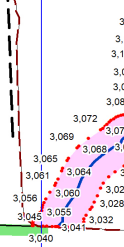
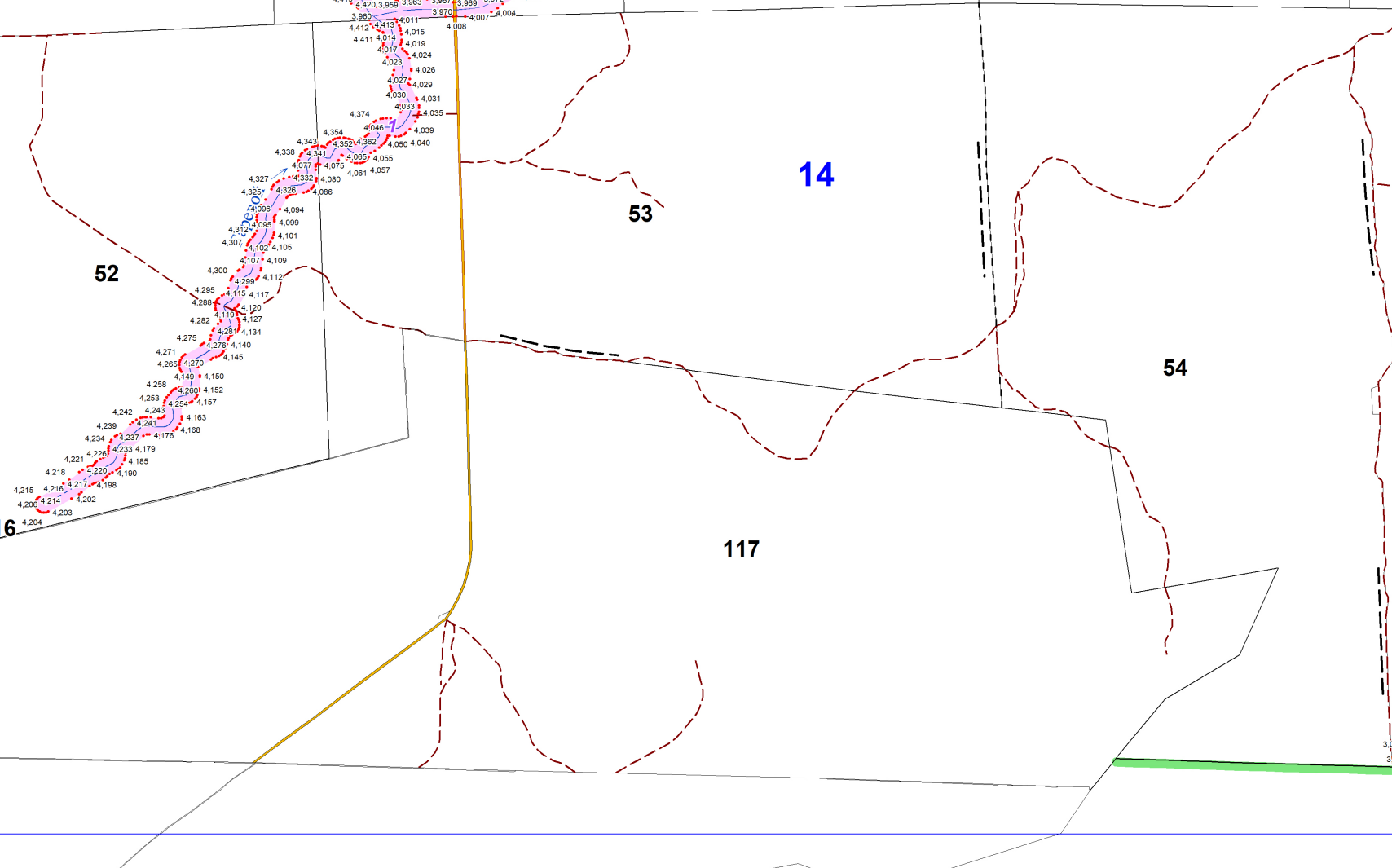
53

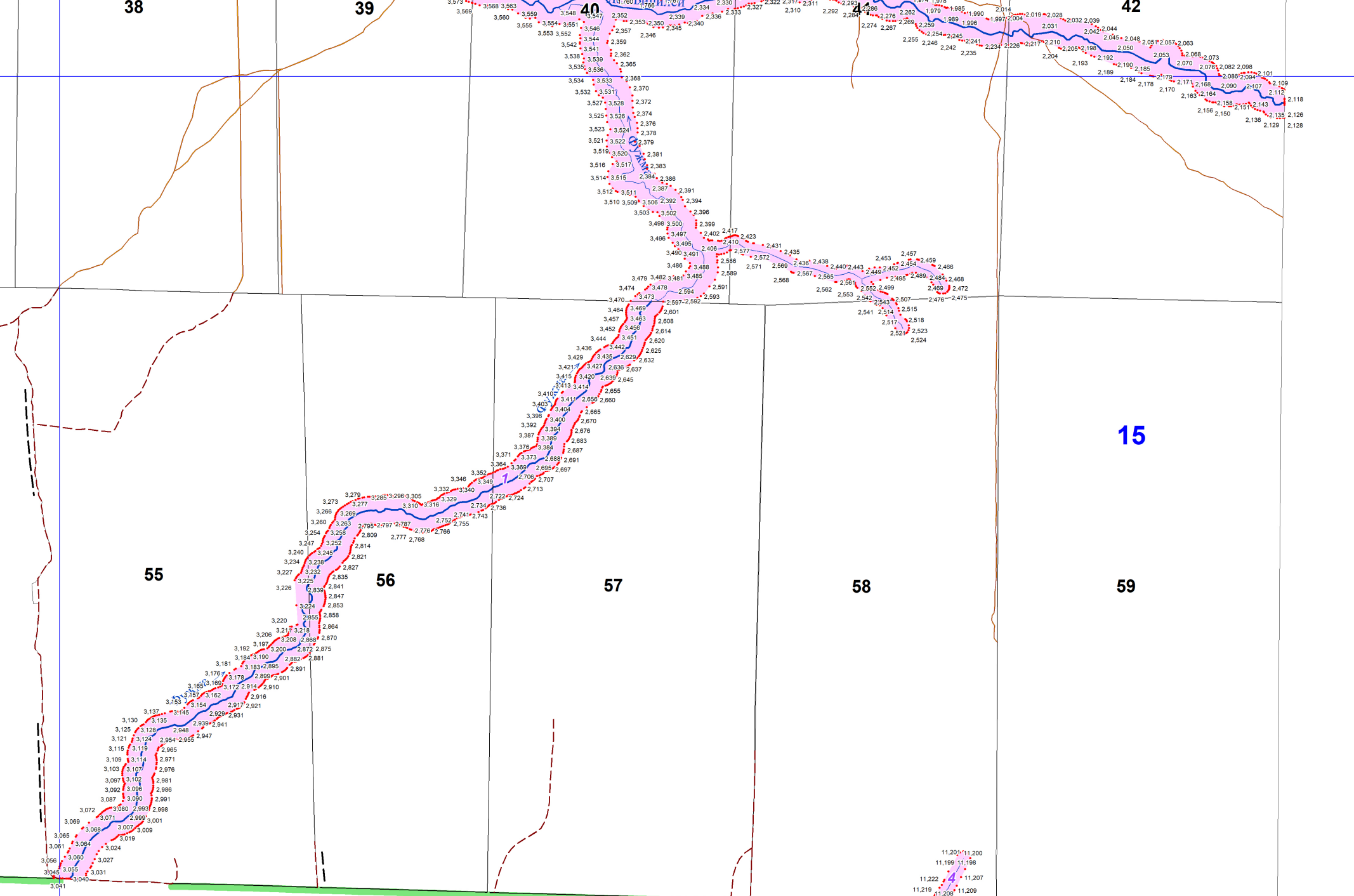
14

54

116

117

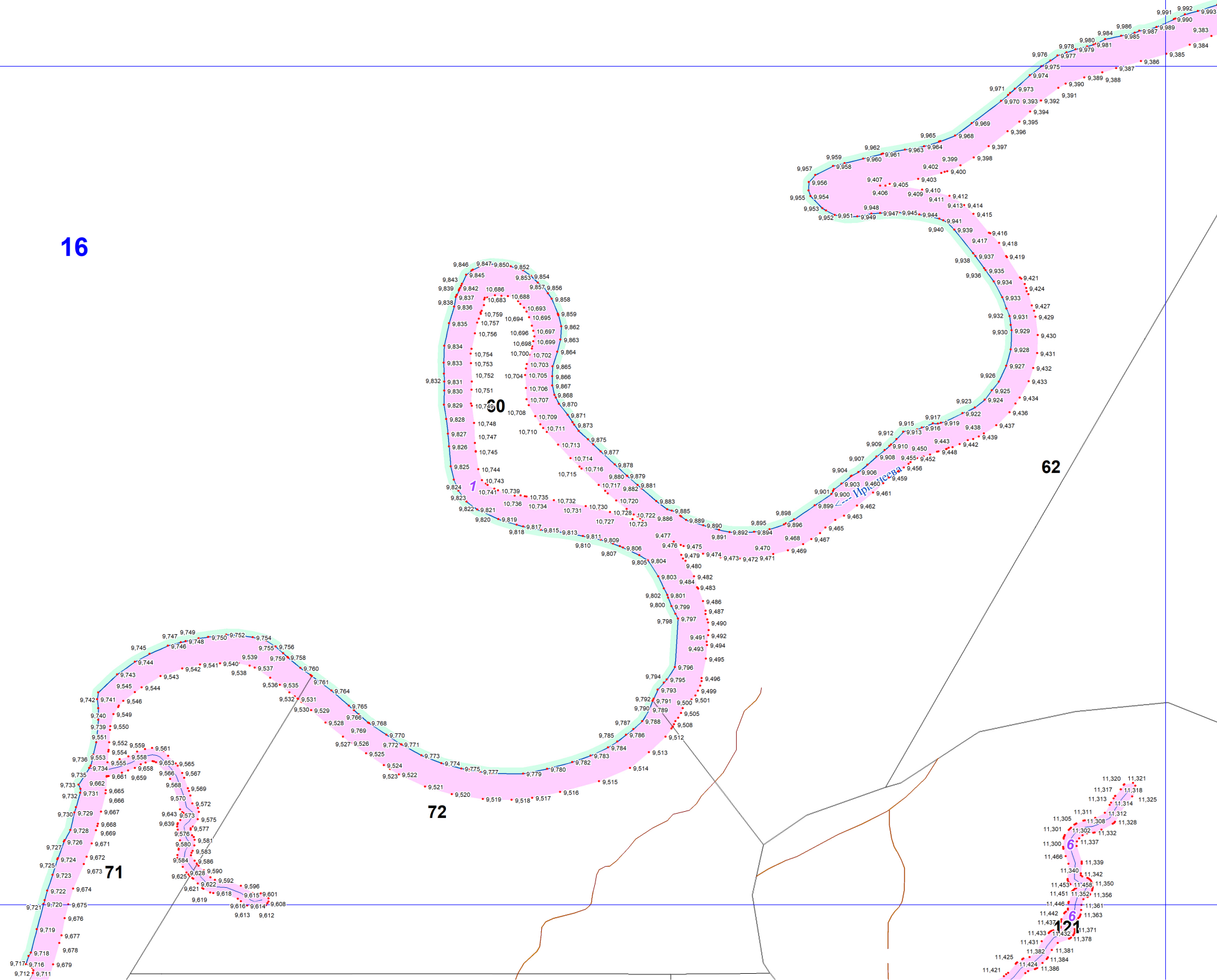




Красногорьевское участковое лесничество



16



60

62

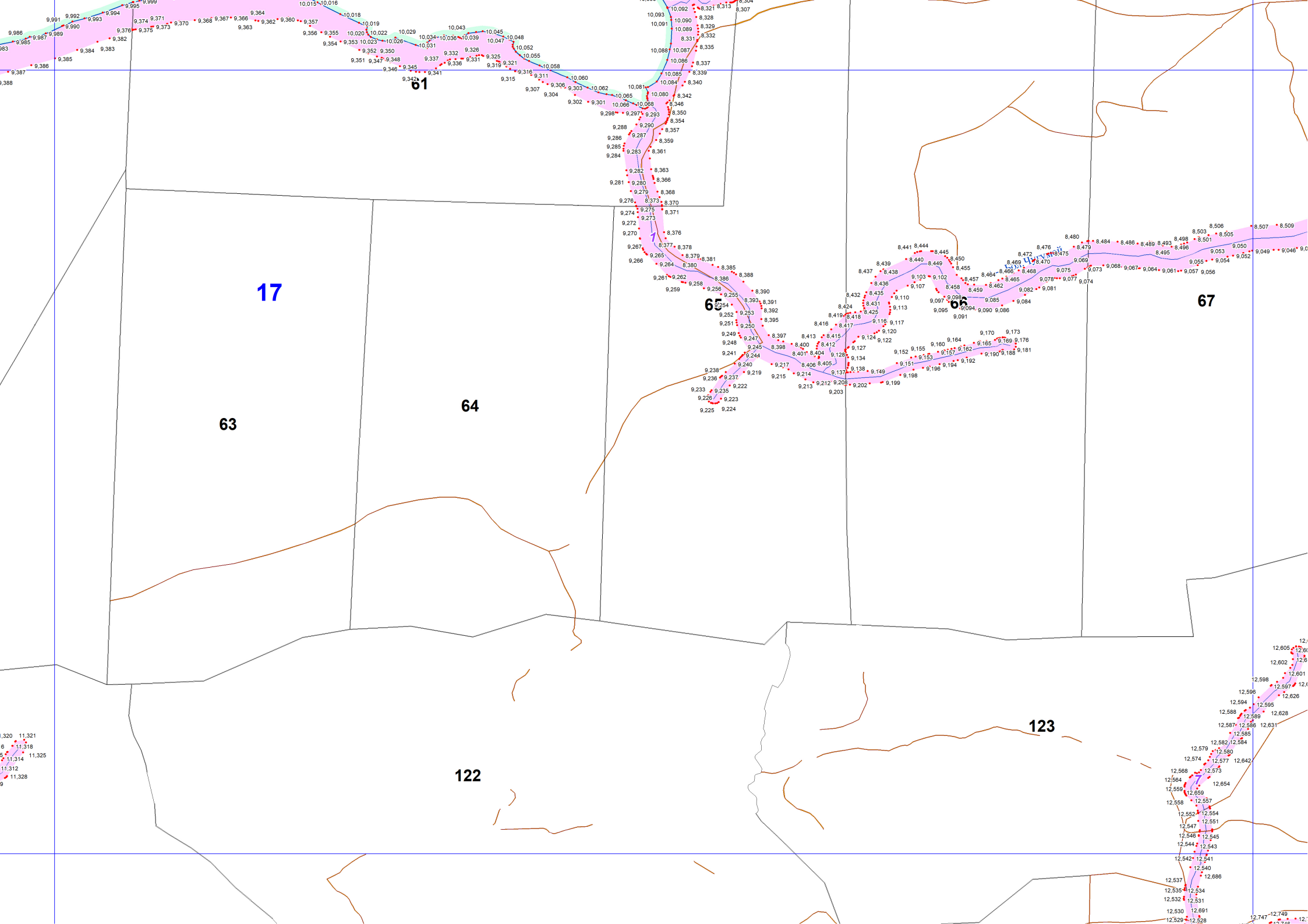
72

71

66

76

121



17

63

64

61

65

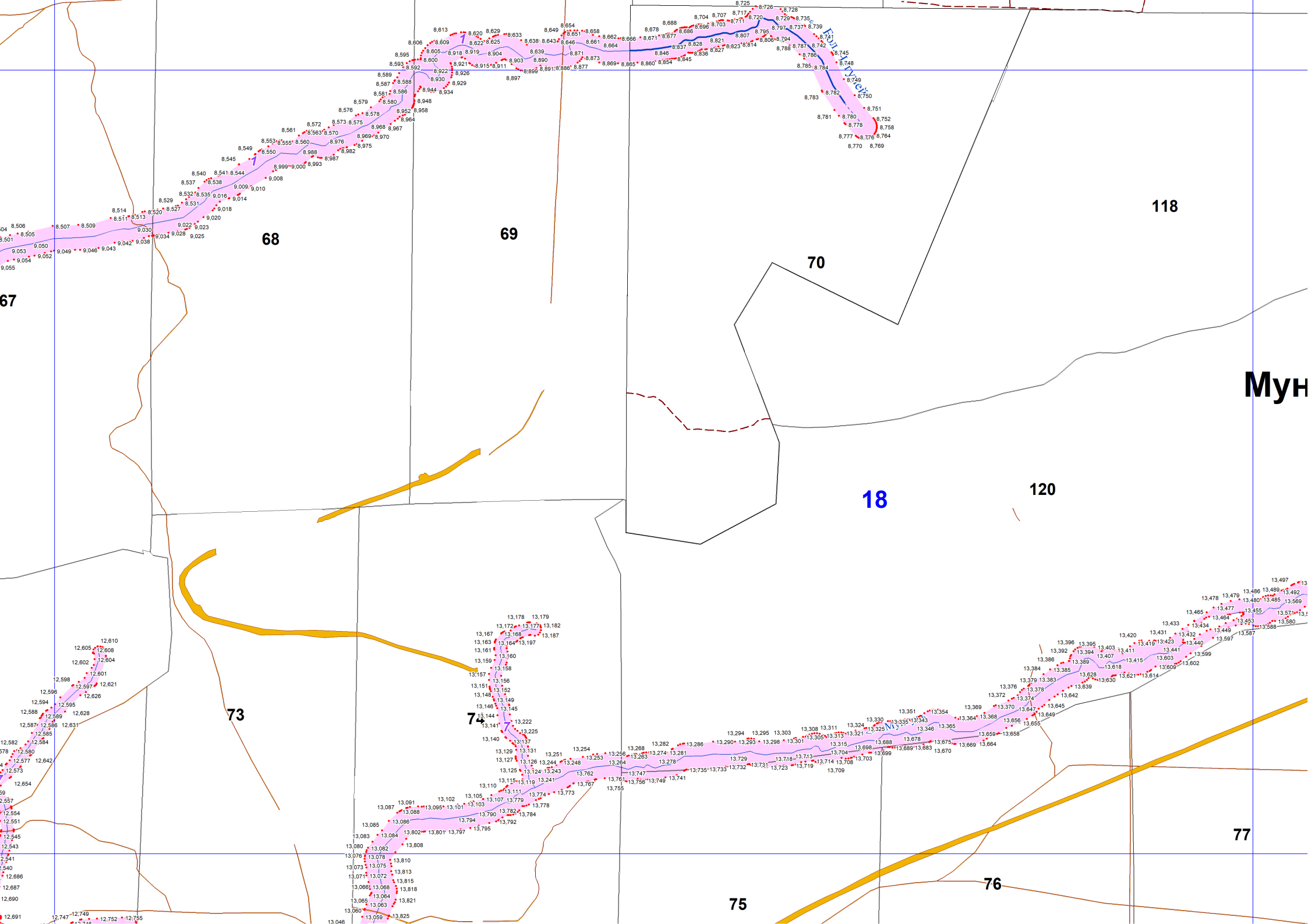
67

122

123

11,320  
11,321  
6 11,318  
11,314  
11,312  
9 11,328

12,605  
12,606  
12,602  
12,601  
12,598  
12,596  
12,594  
12,588  
12,589  
12,587  
12,586  
12,631  
12,585  
12,579  
12,574  
12,573  
12,564  
12,564  
12,564  
12,564  
12,558  
12,557  
12,552  
12,554  
12,547  
12,546  
12,544  
12,543  
12,542  
12,541  
12,540  
12,537  
12,535  
12,532  
12,531  
12,530  
12,691  
12,529  
12,747  
12,749



67

68

69

70

73

74

75

76

77

118

120

18

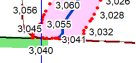
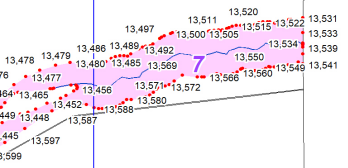
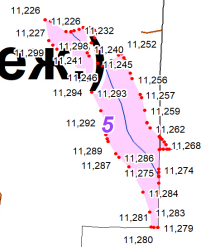
Муш

Мунтуль(неж)

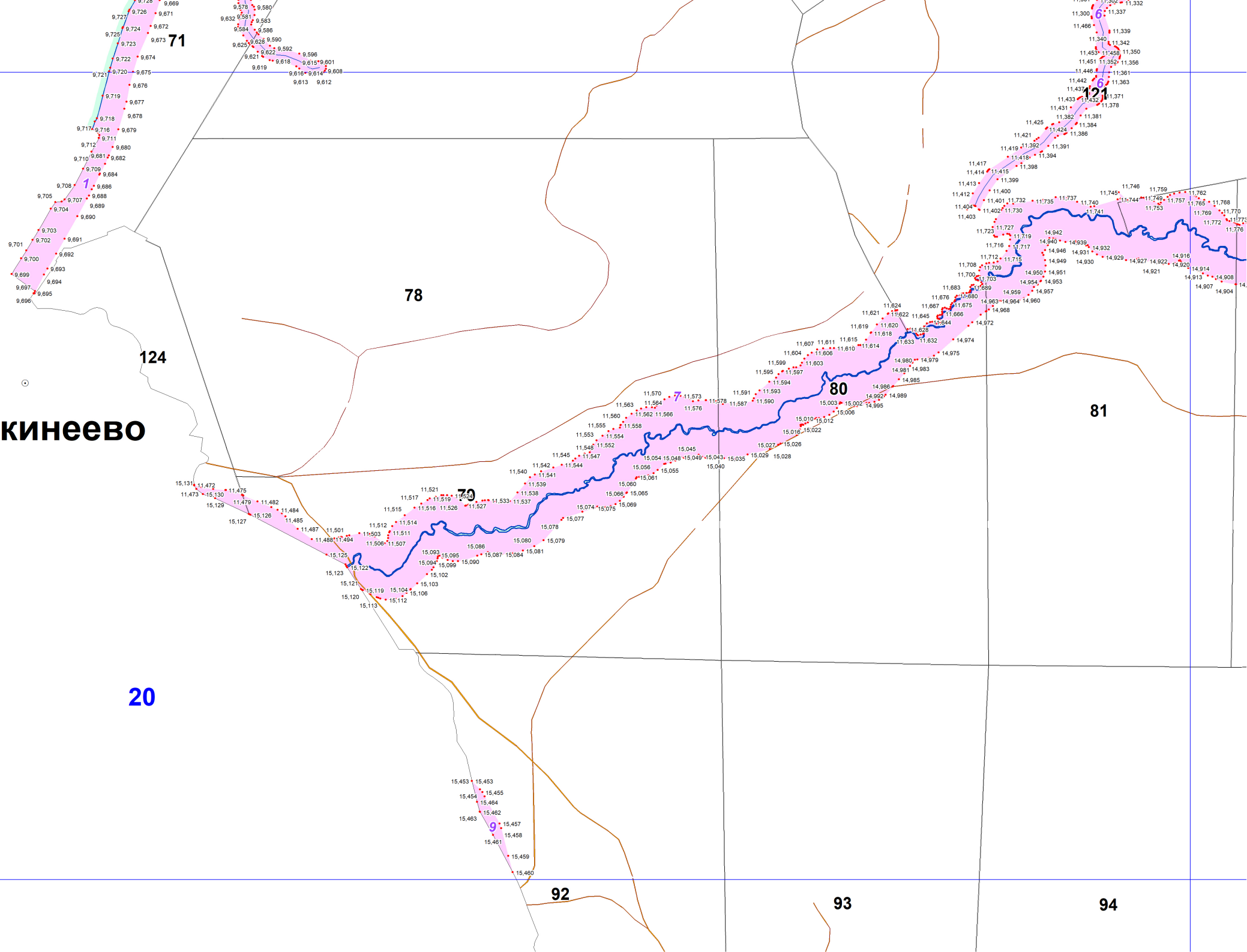
119

19

77



# Иркинеево



20

124

78

70

80

81

92

93

94

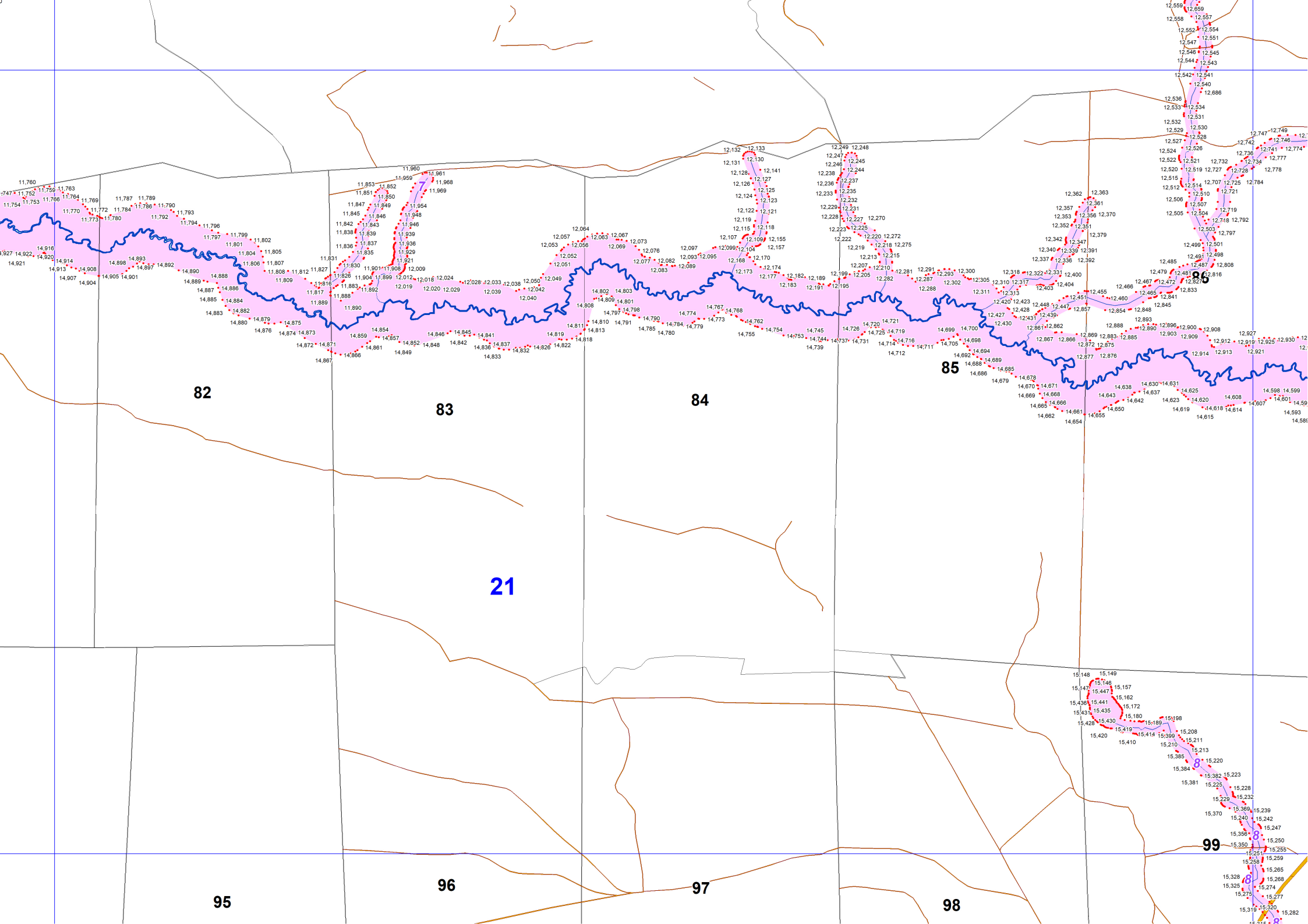
71

1

121

6

9



82

83

84

85

21

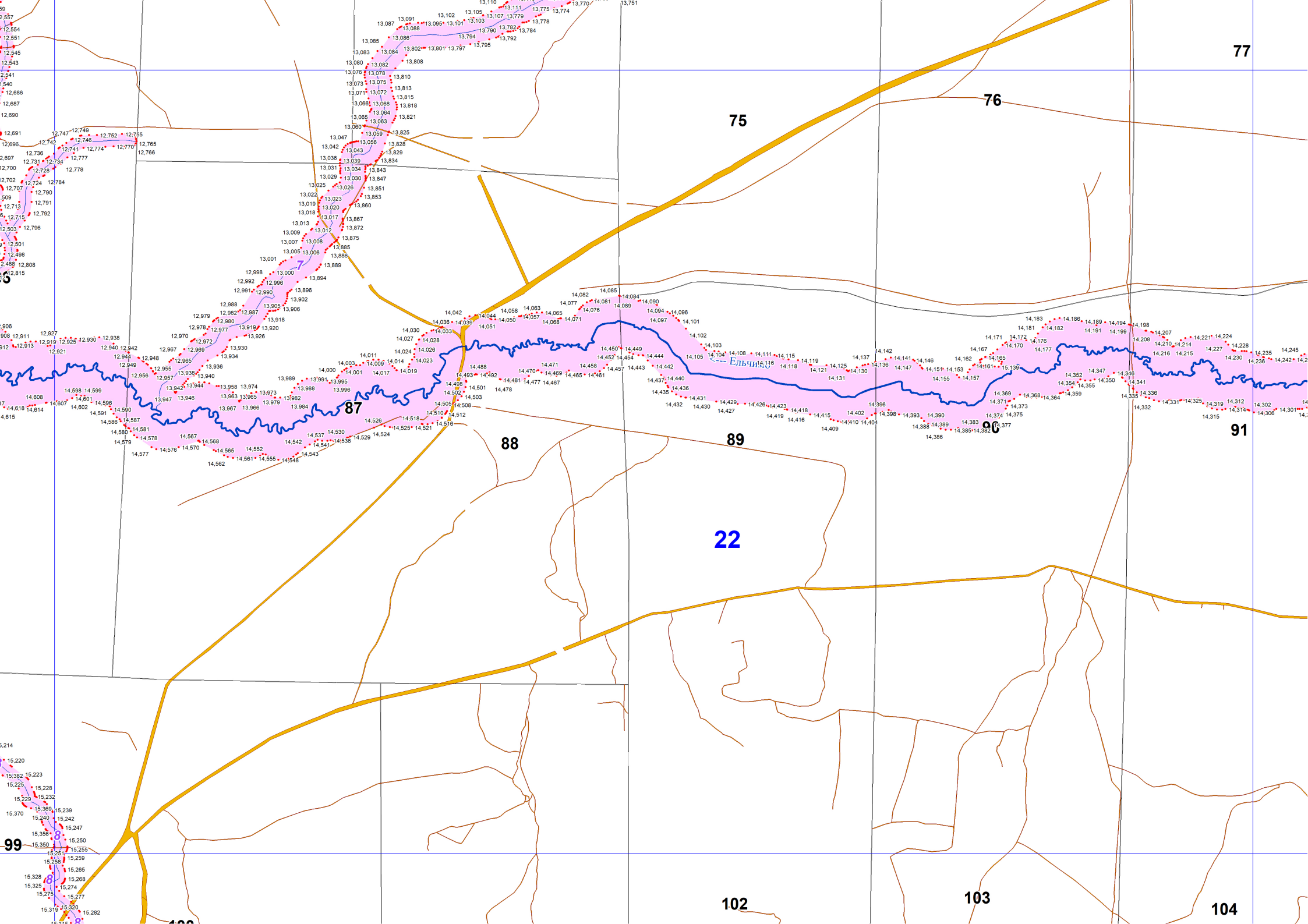
95

96

97

98

99



77

76

75

91

89

88

22

104

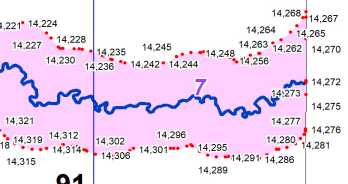
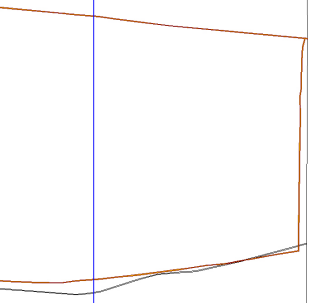
103

102

99

100

77



91

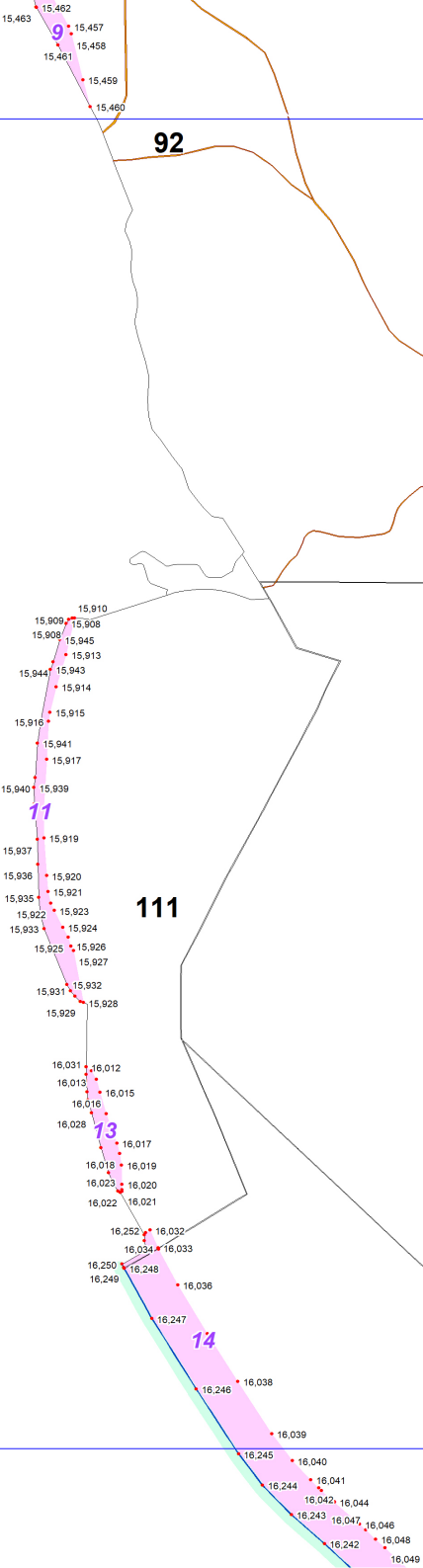
23



104



24



92

93

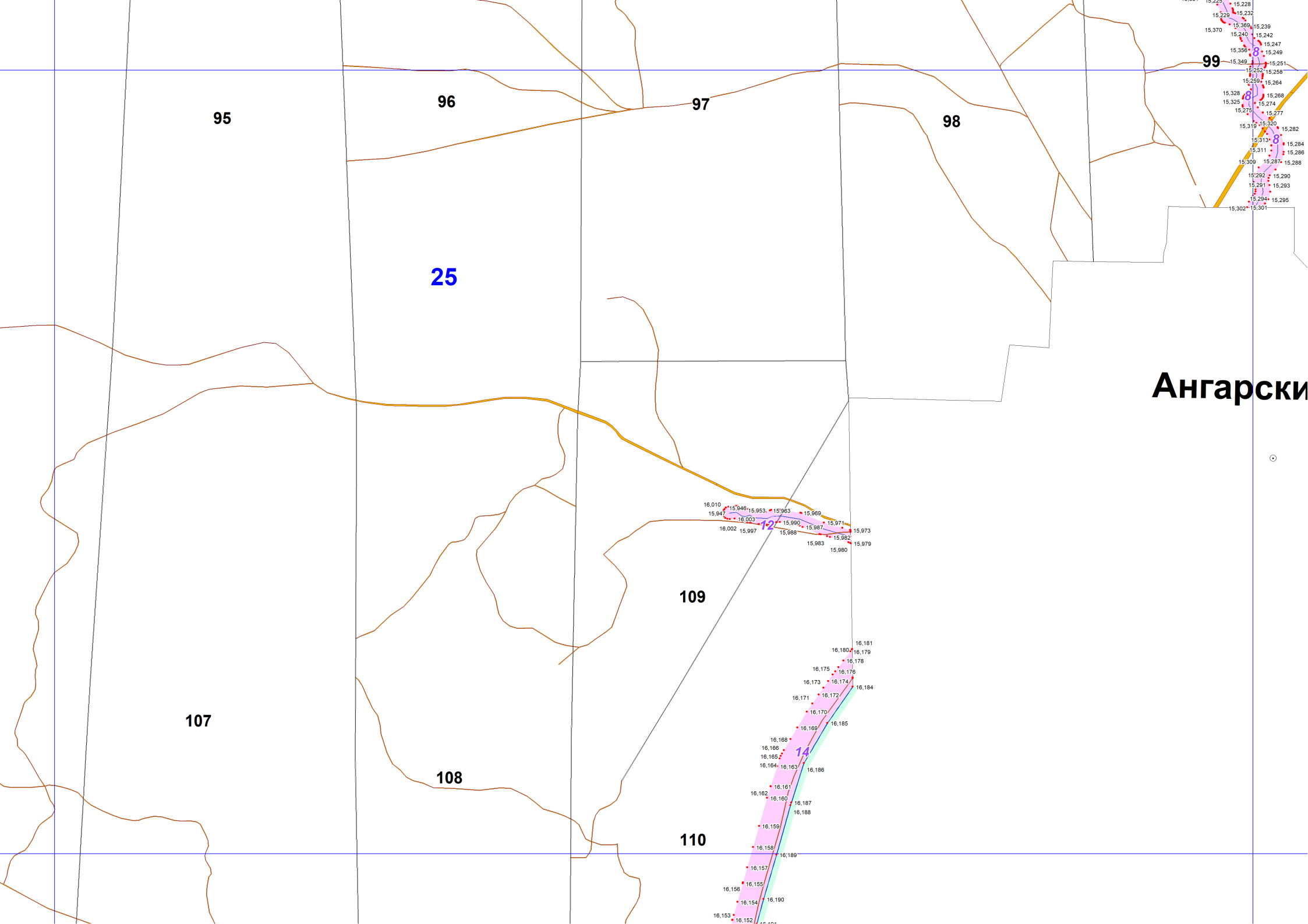
94

111

105

106

114



95

96

97

98

25

Ангарски

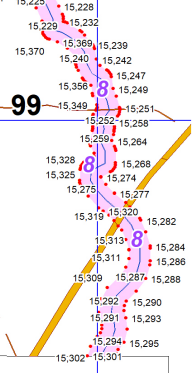
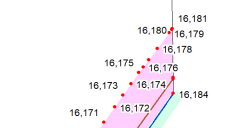
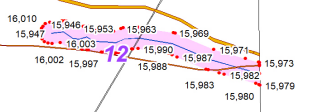
107

108

109

110

99







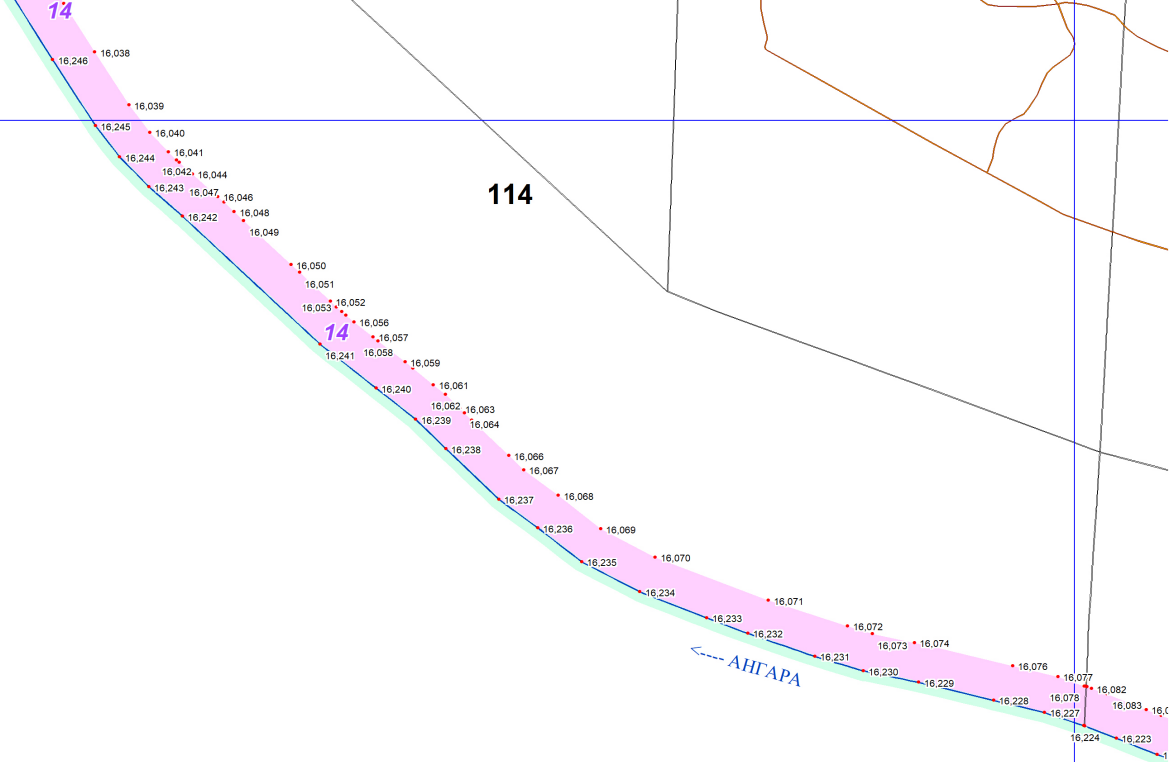
28

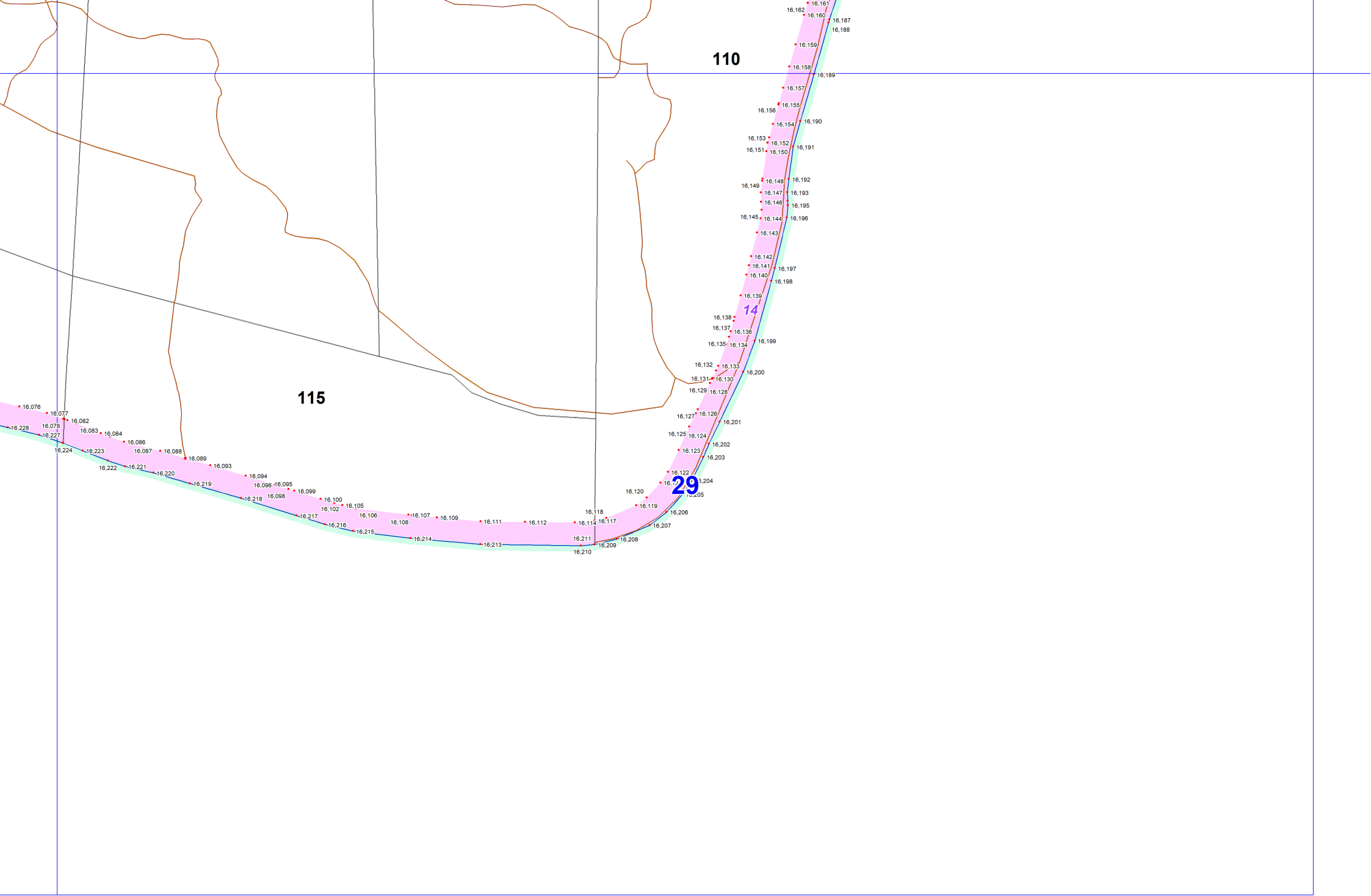
114

14

14

← АНГАРА





110

115

14

29