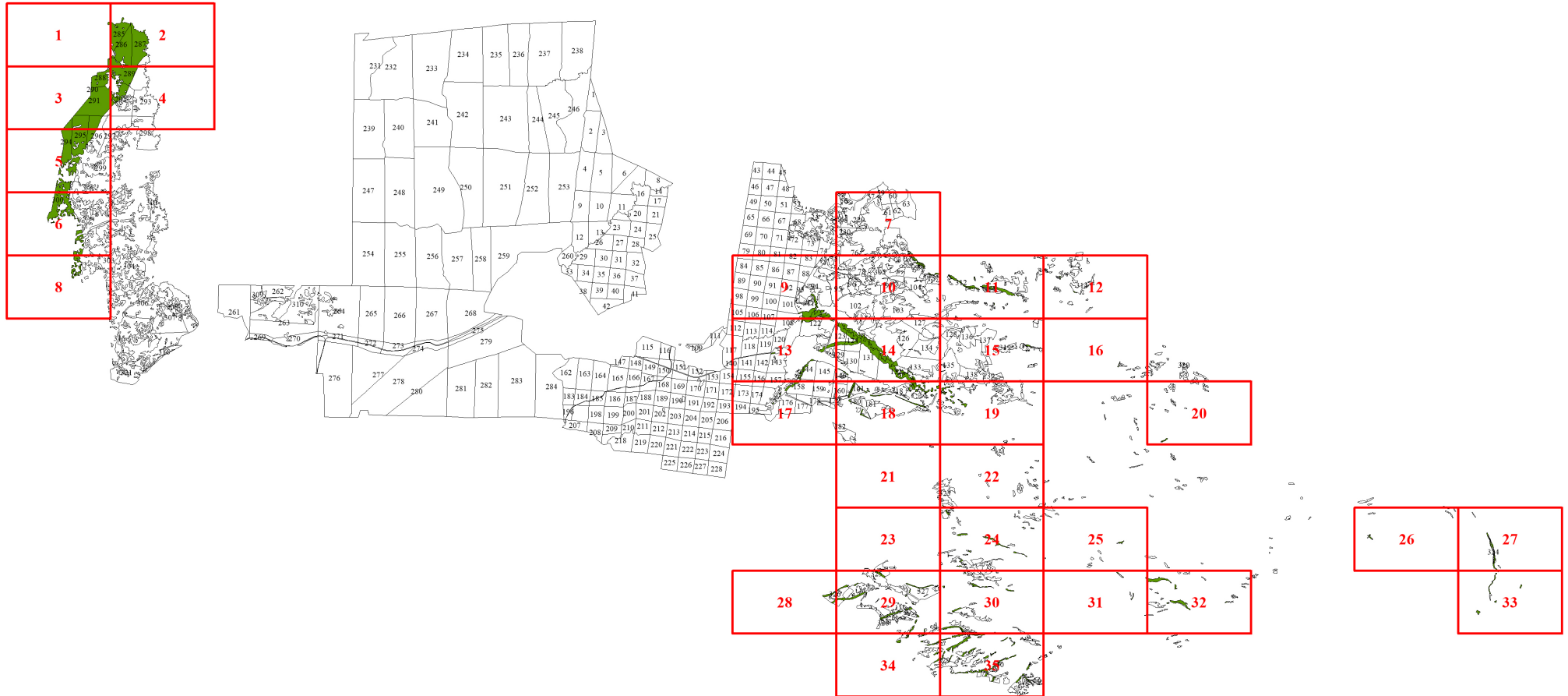


Графическое описание местоположения границ земель, на которых располагаются леса, расположенные на особо охраняемых природных территориях, на территории Кемчугского участкового лесничества Емельяновского лесничества Красноярского края



Условные обозначения:

1 - схема расположения листов

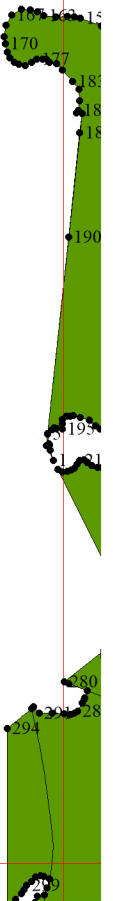
границы:

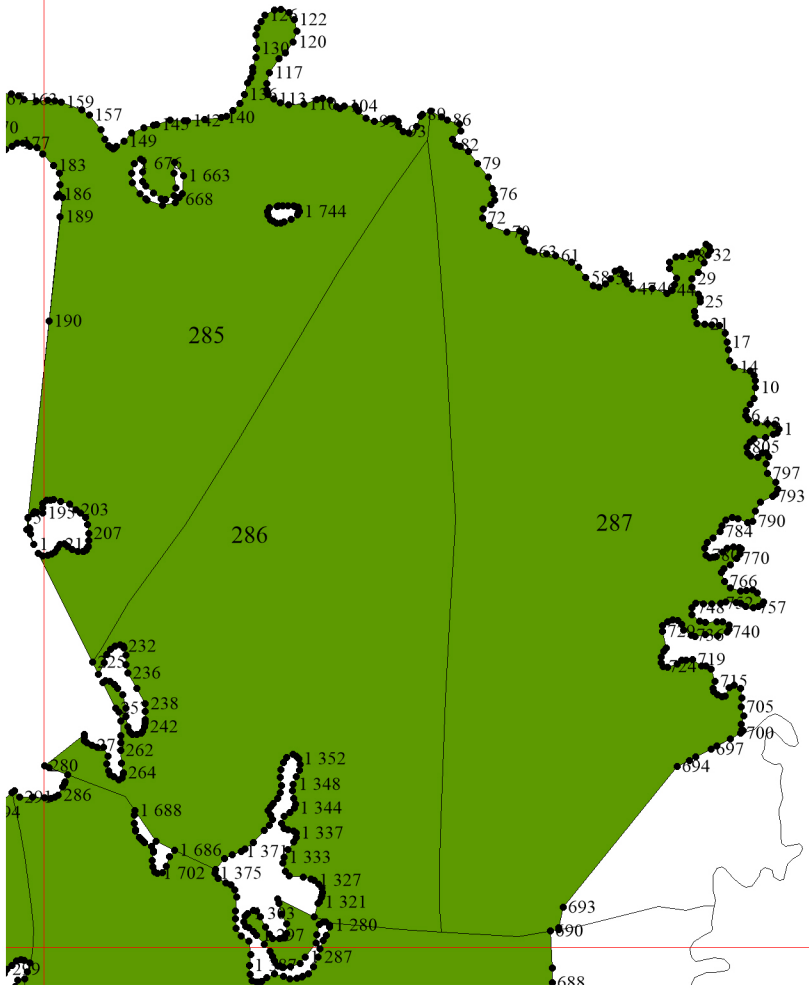
— - участковых лесничеств

— - участков

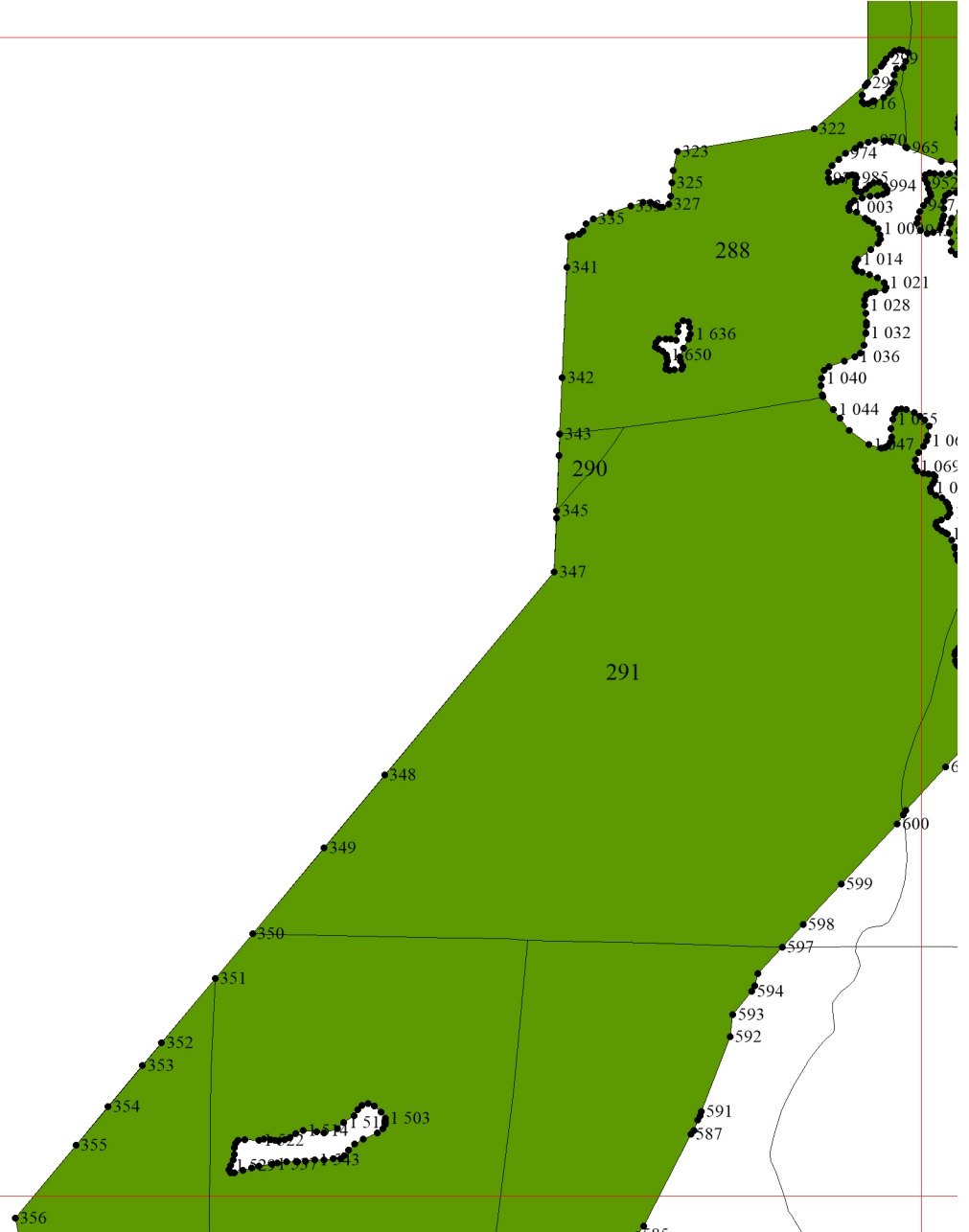
— - листов

1

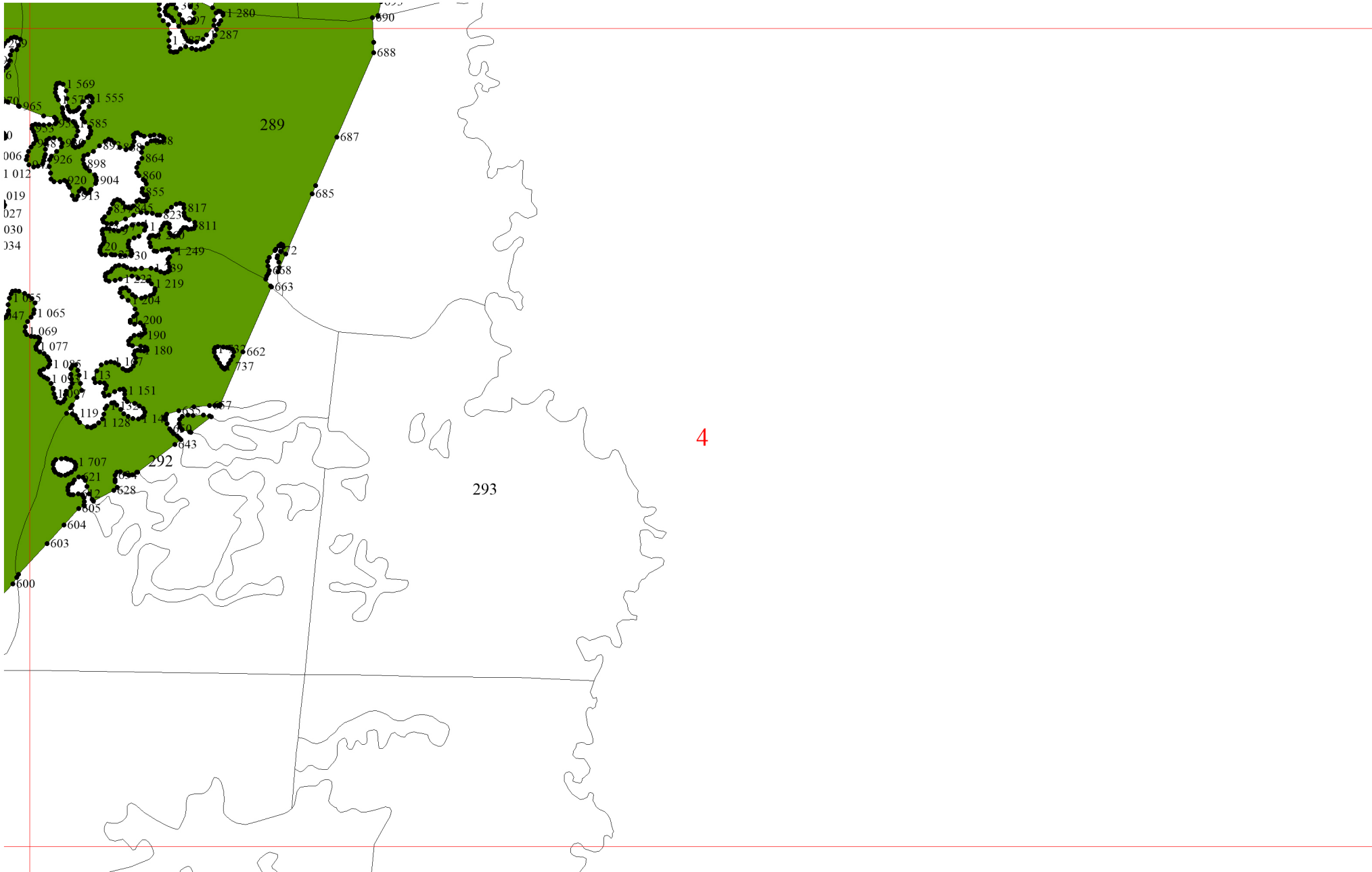


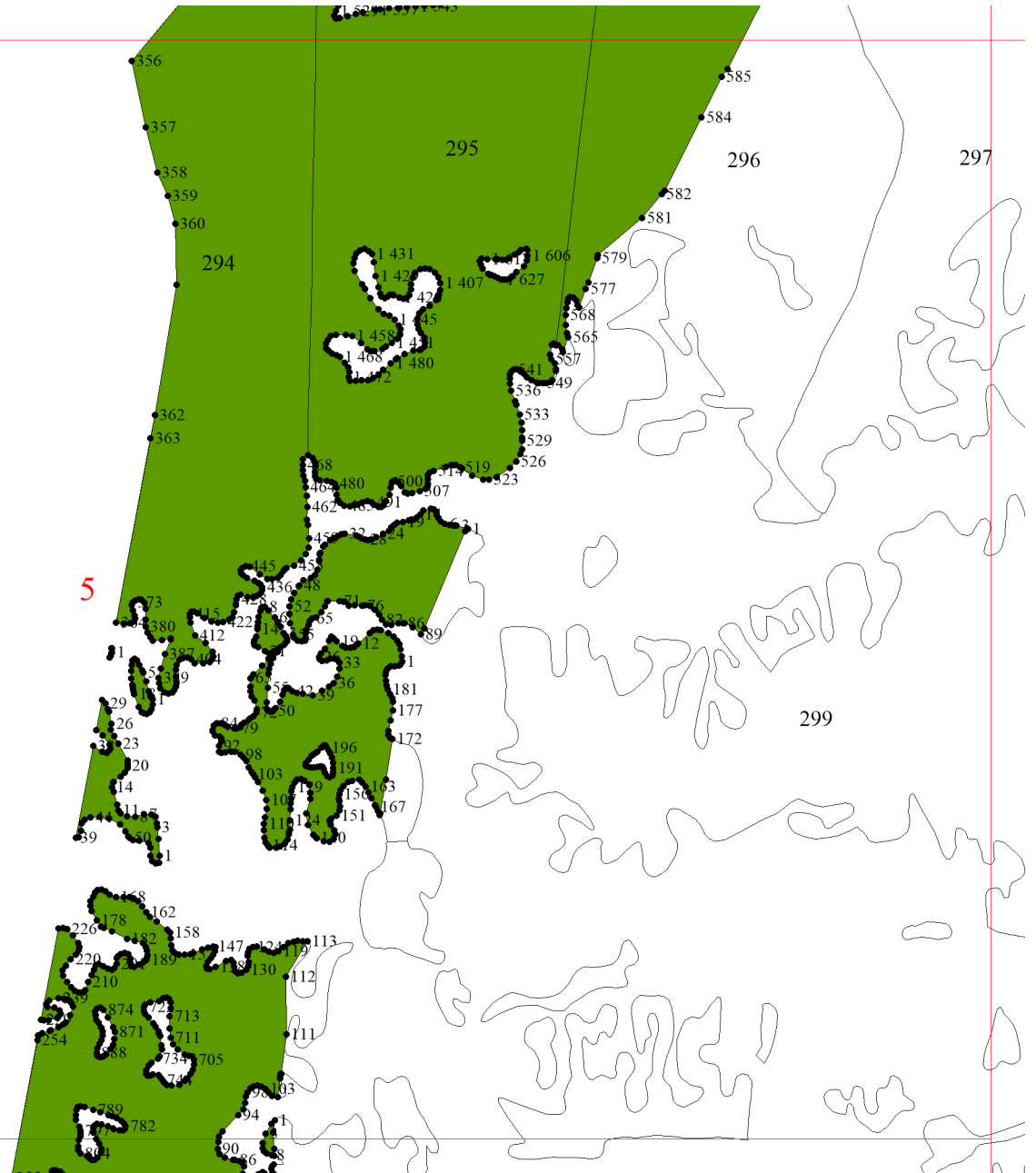


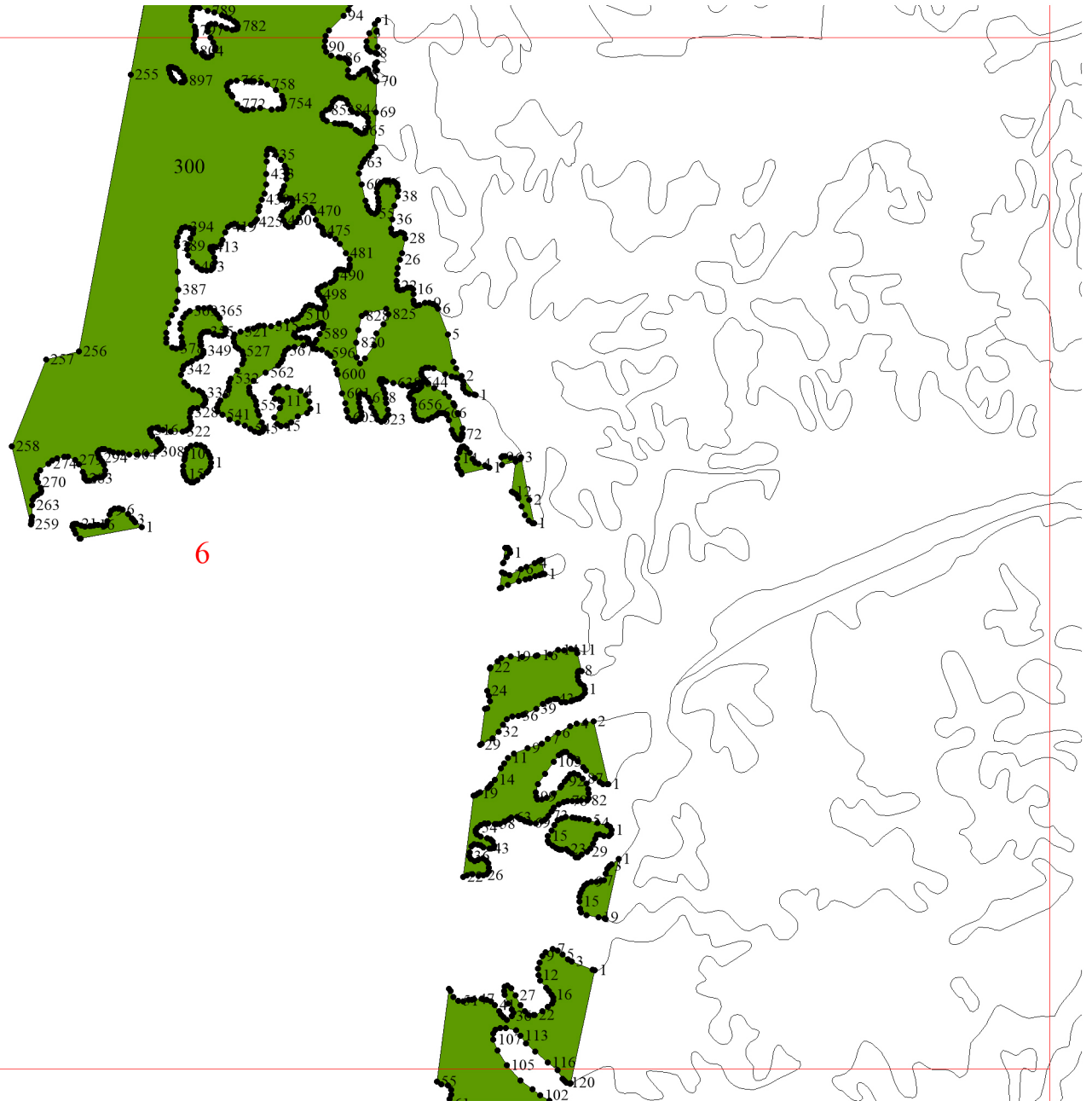
2

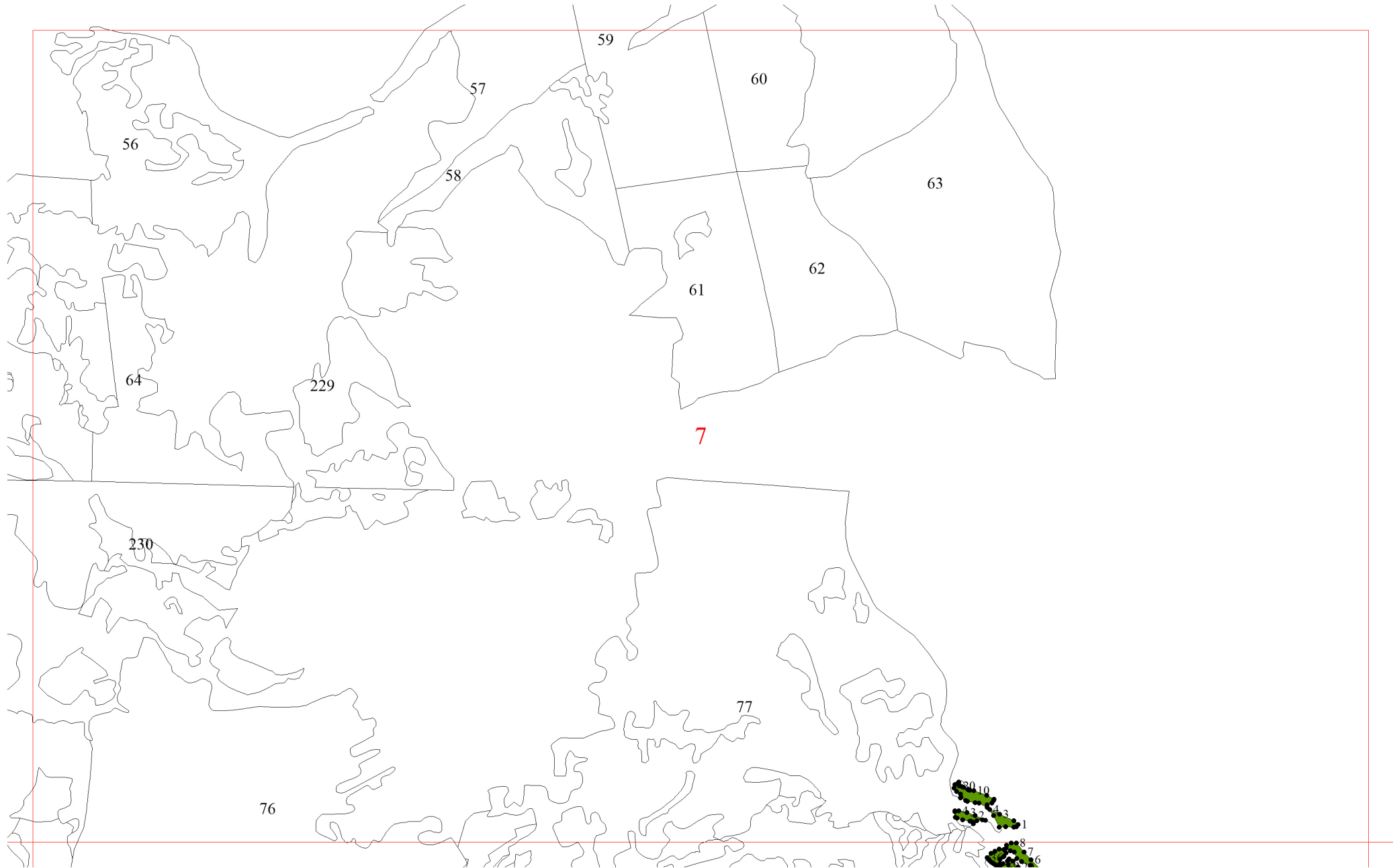


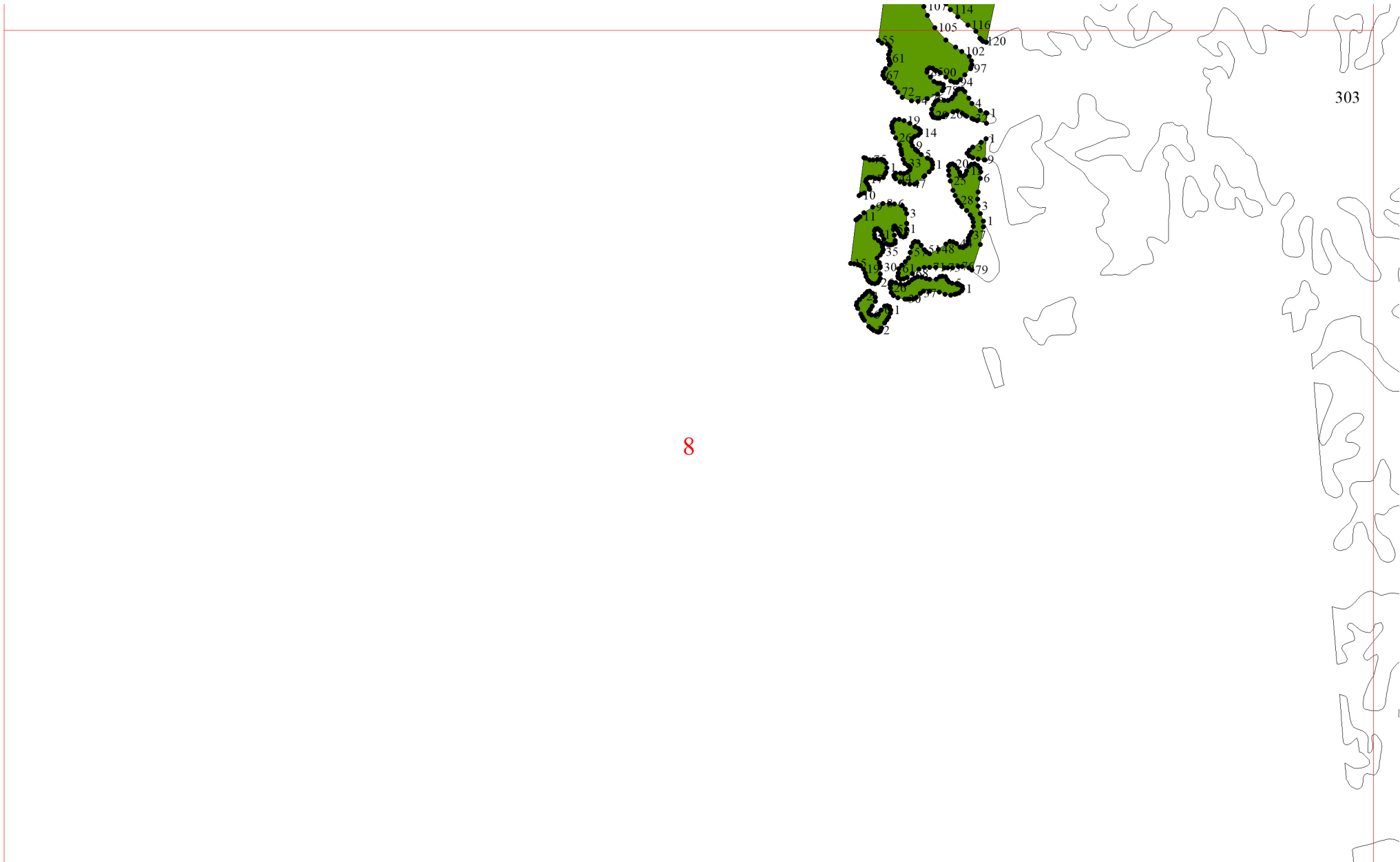
3



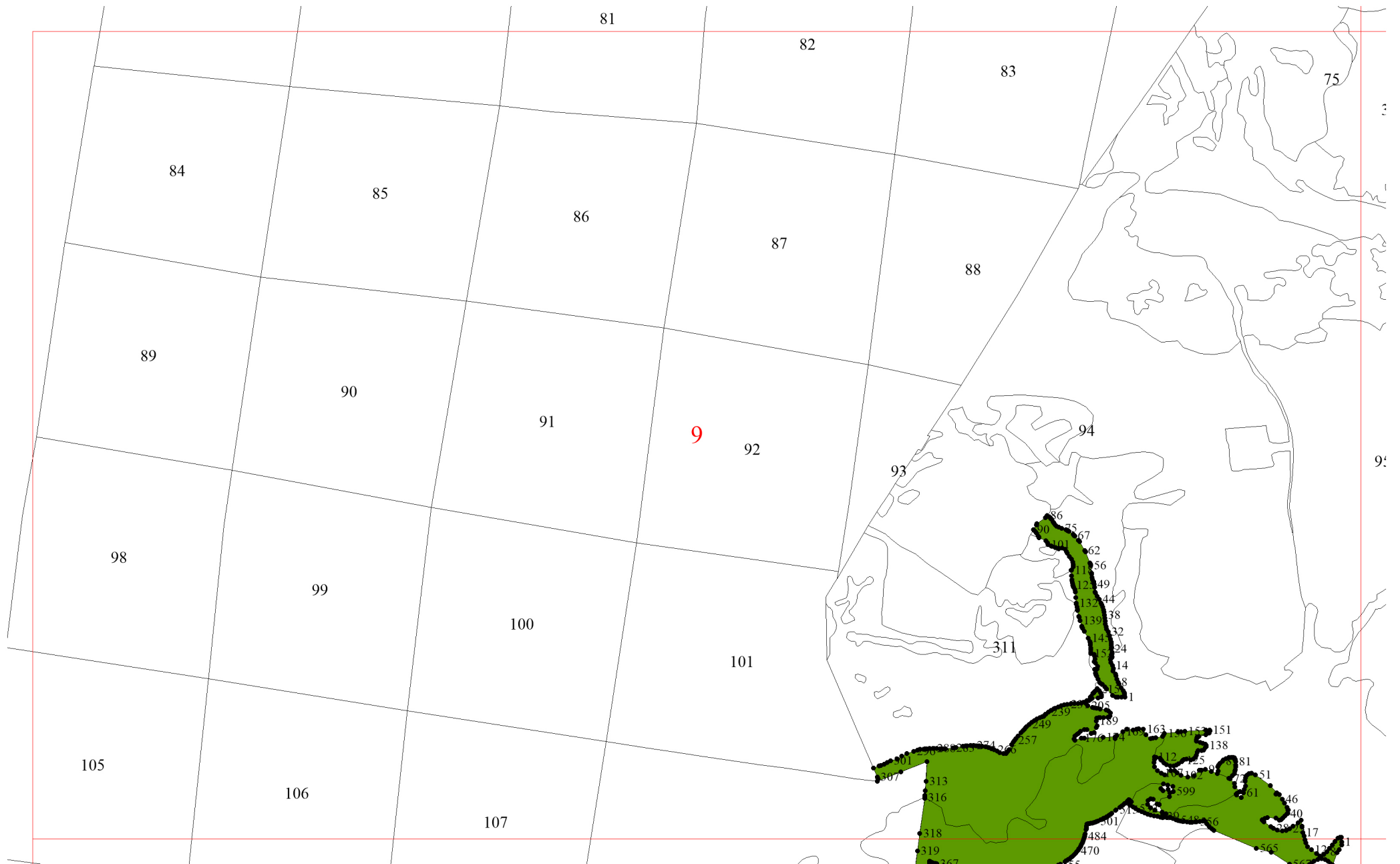


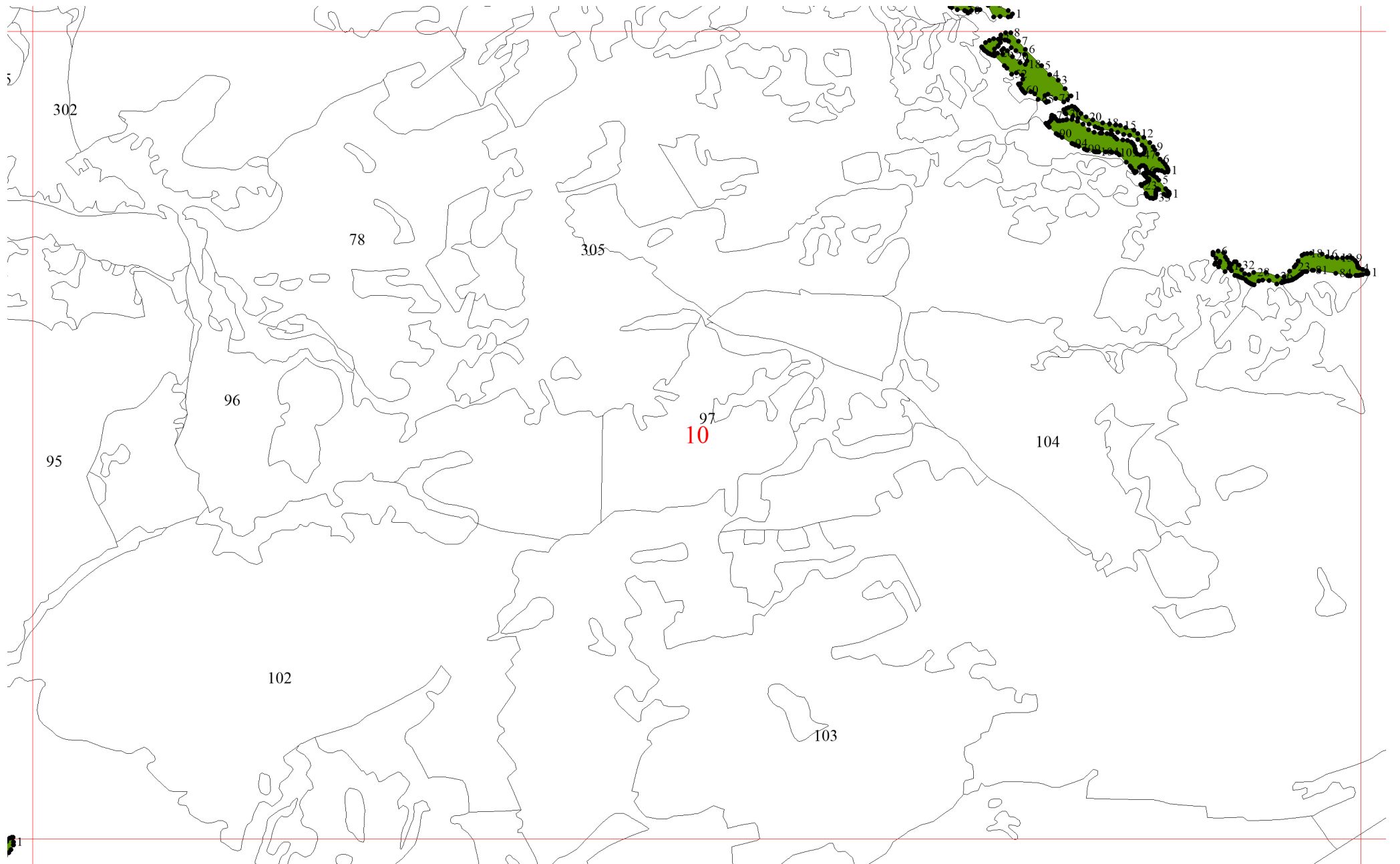


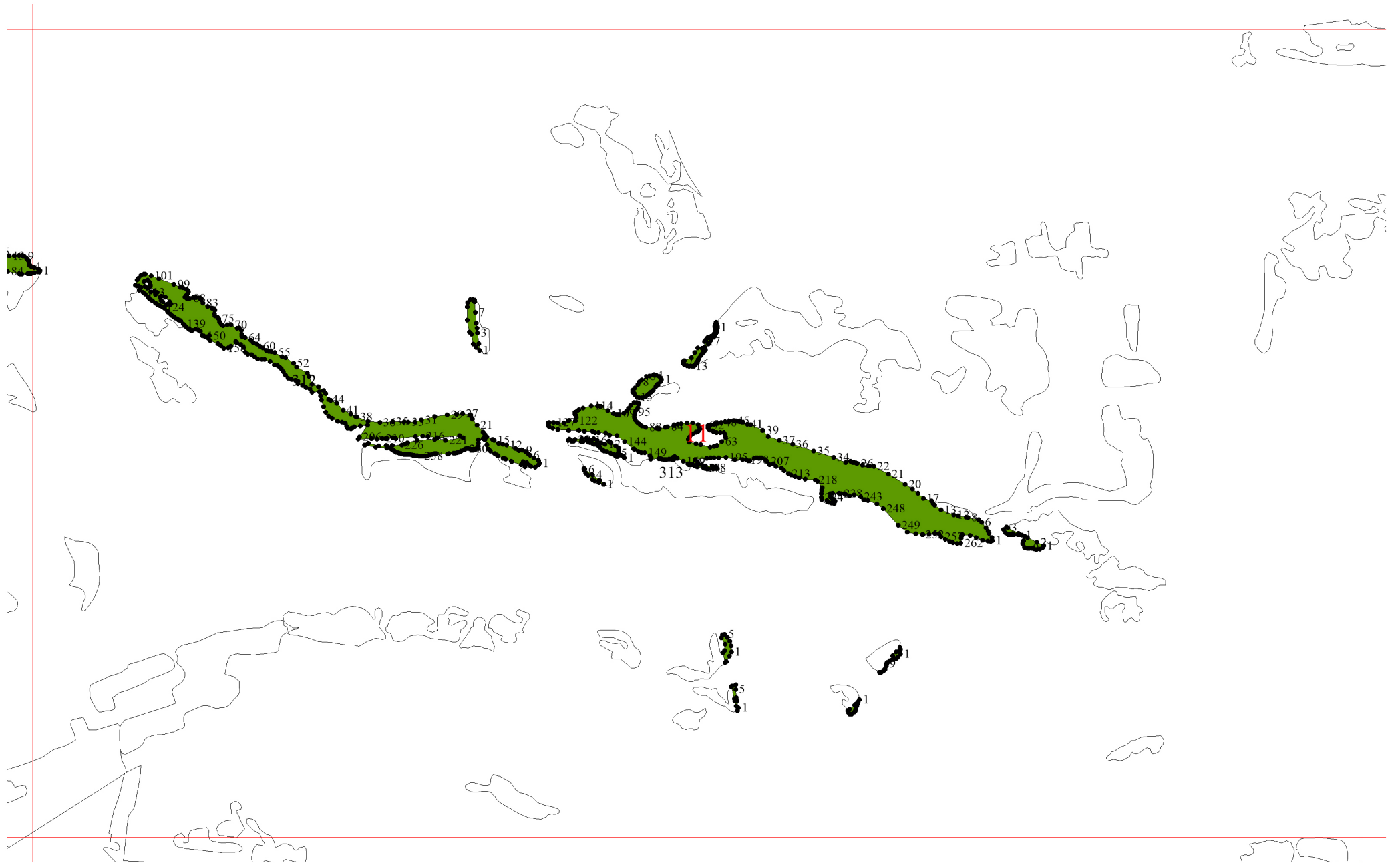


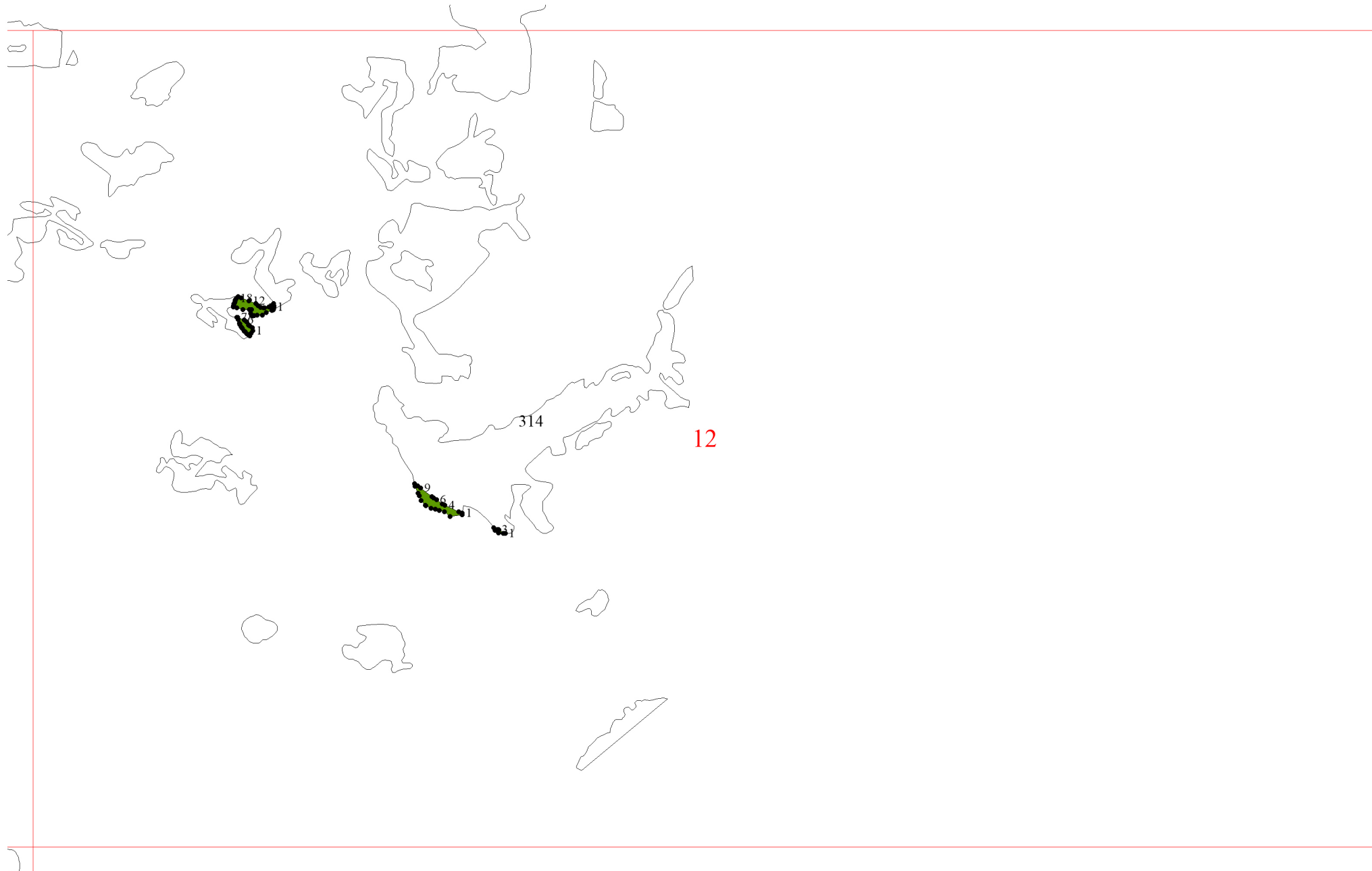


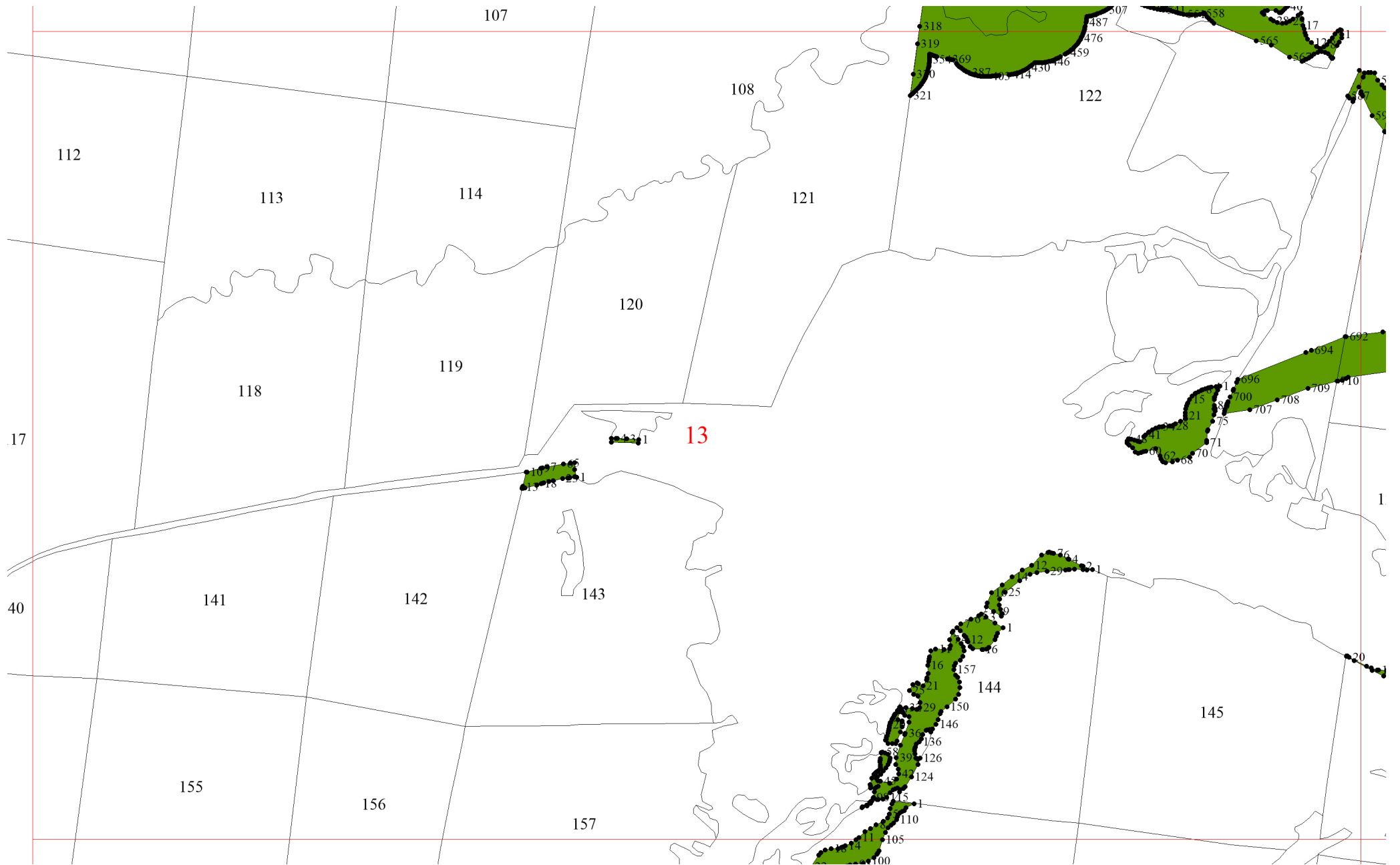
8

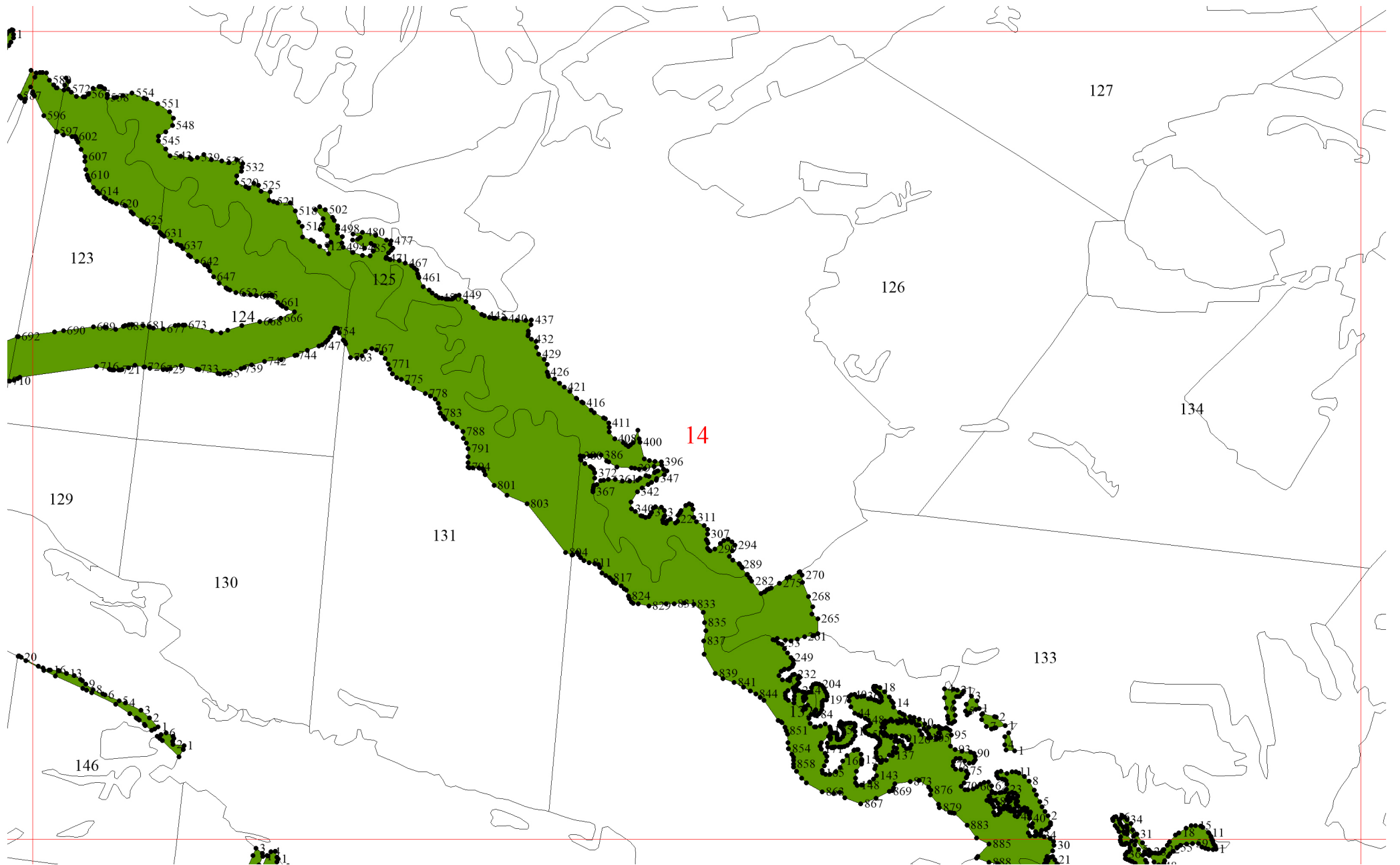


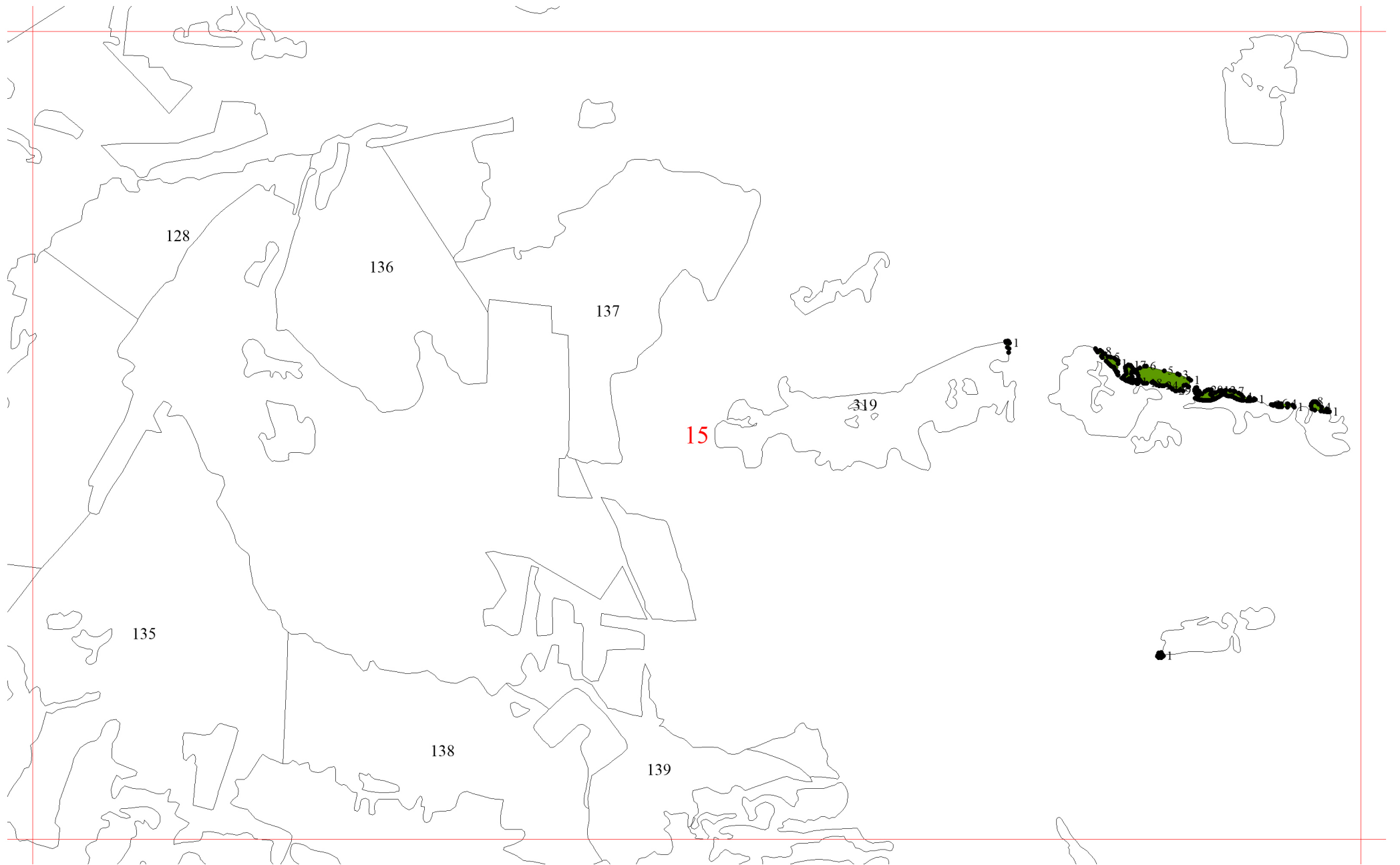


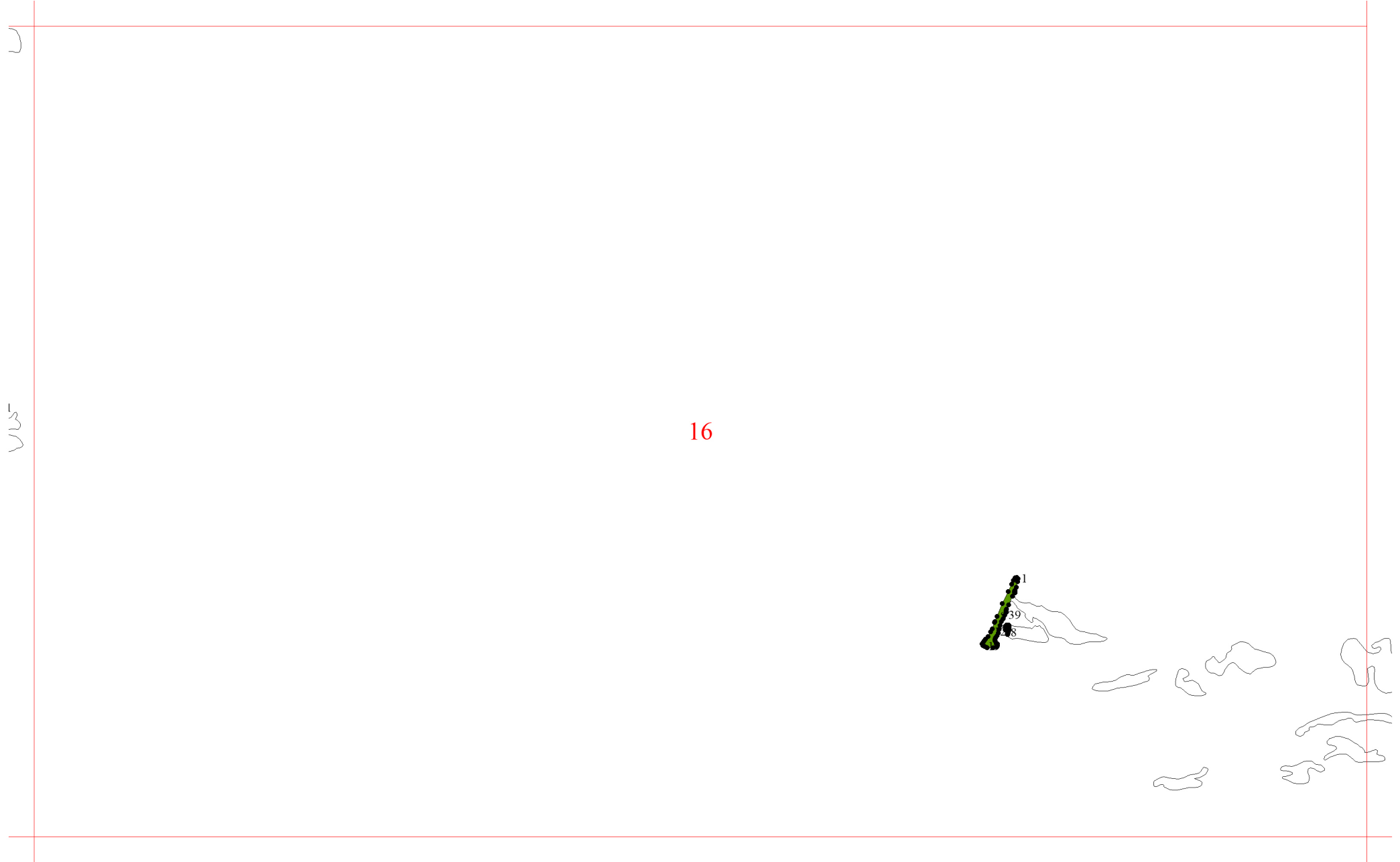












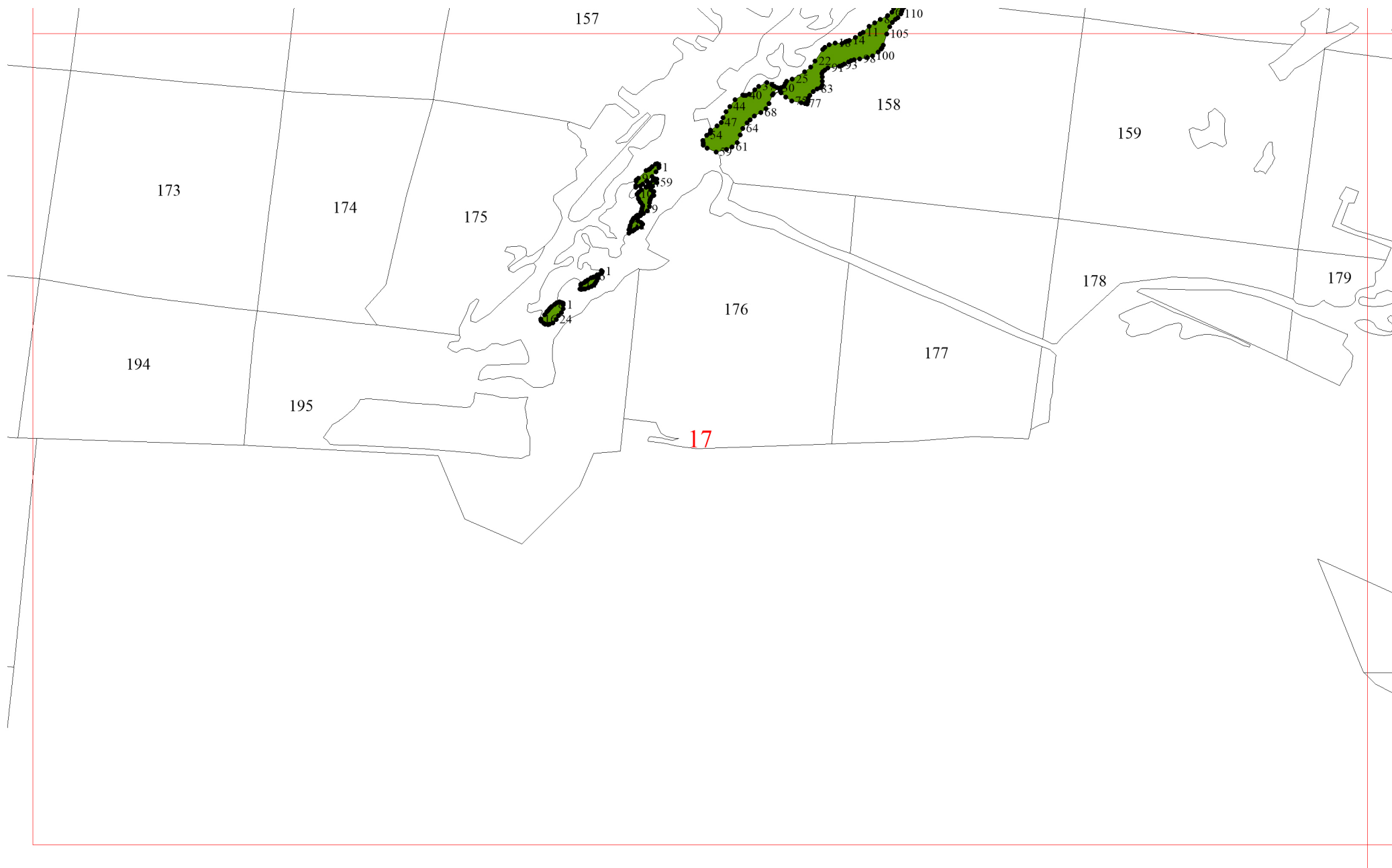
U

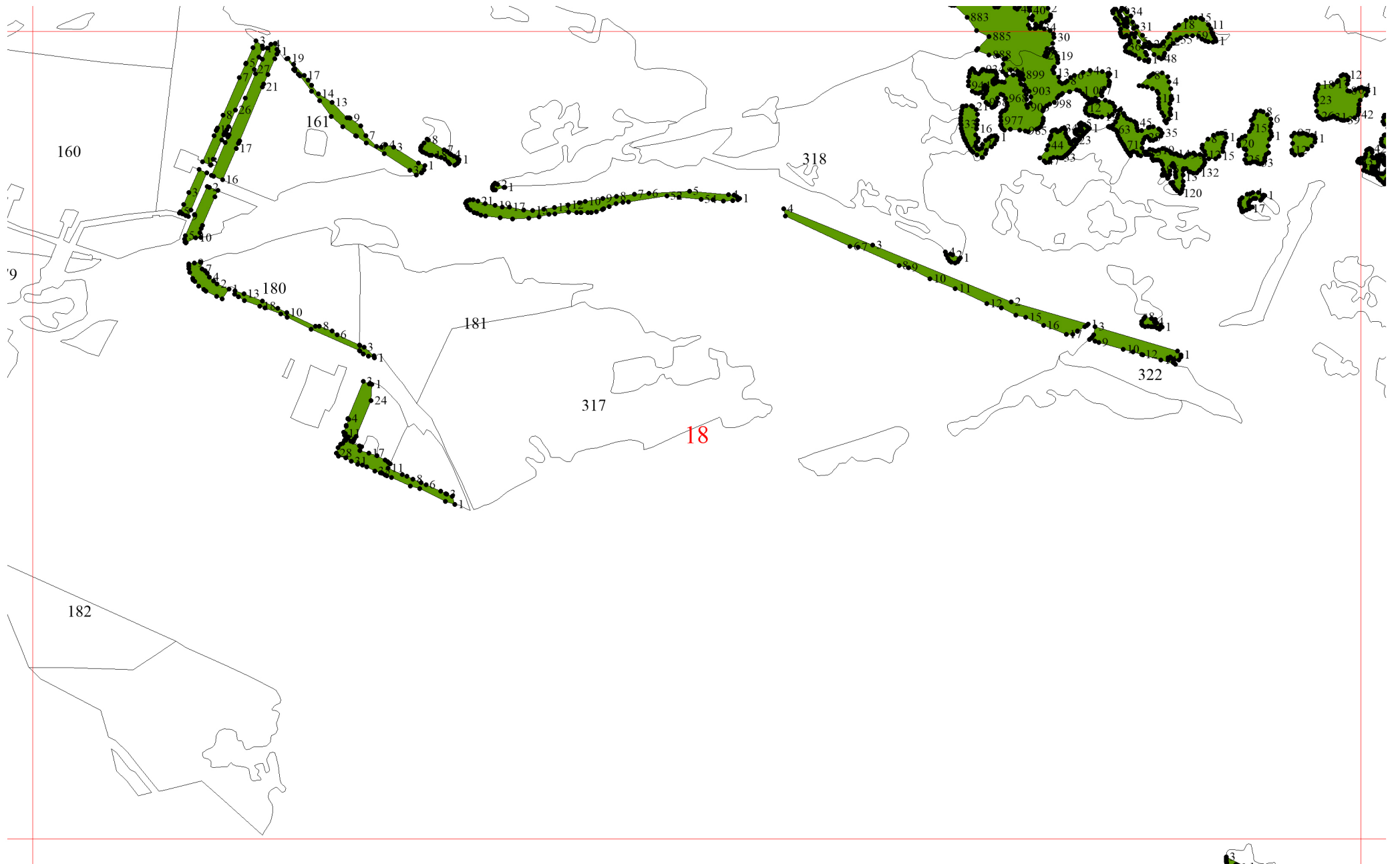
V_U

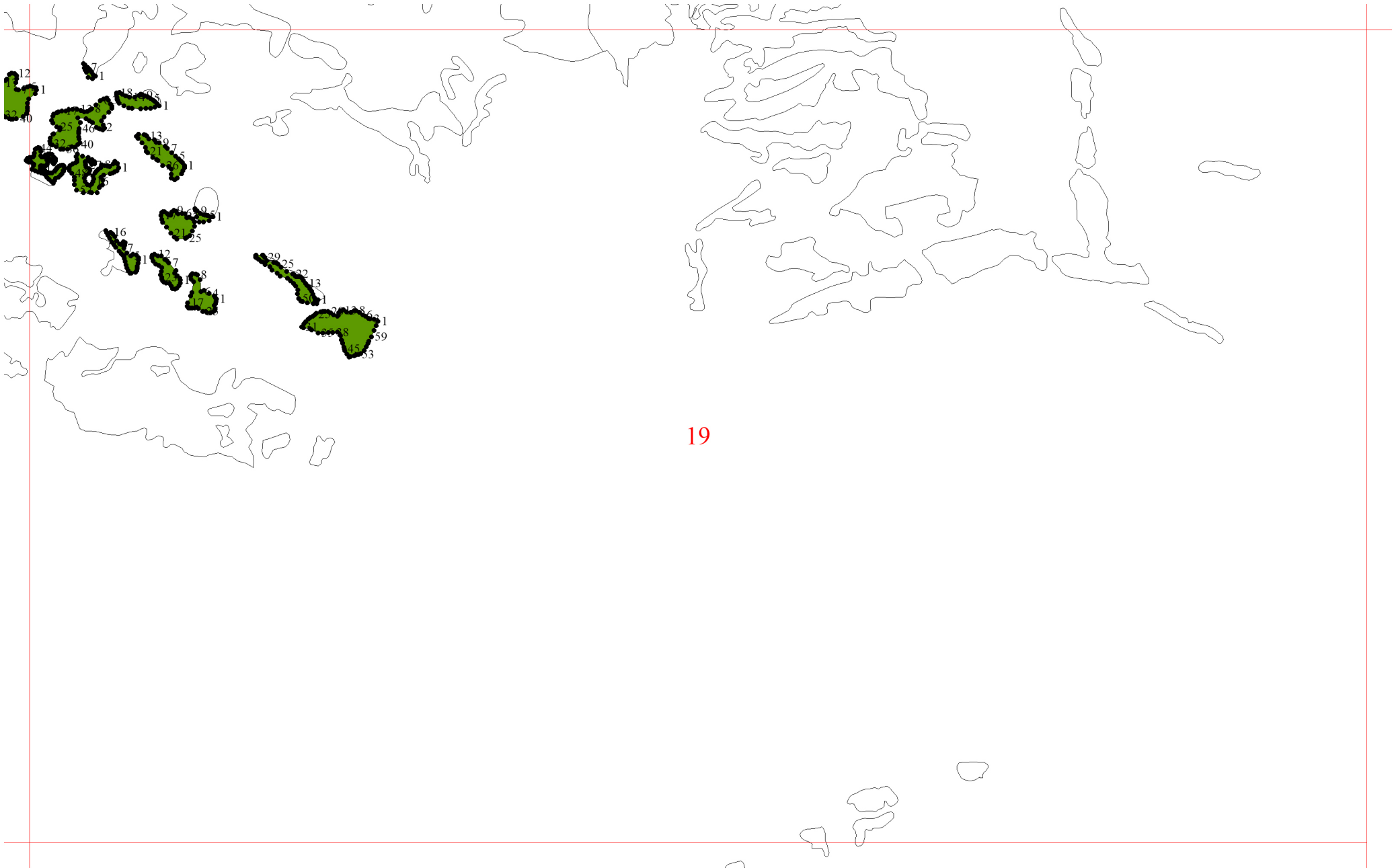
16

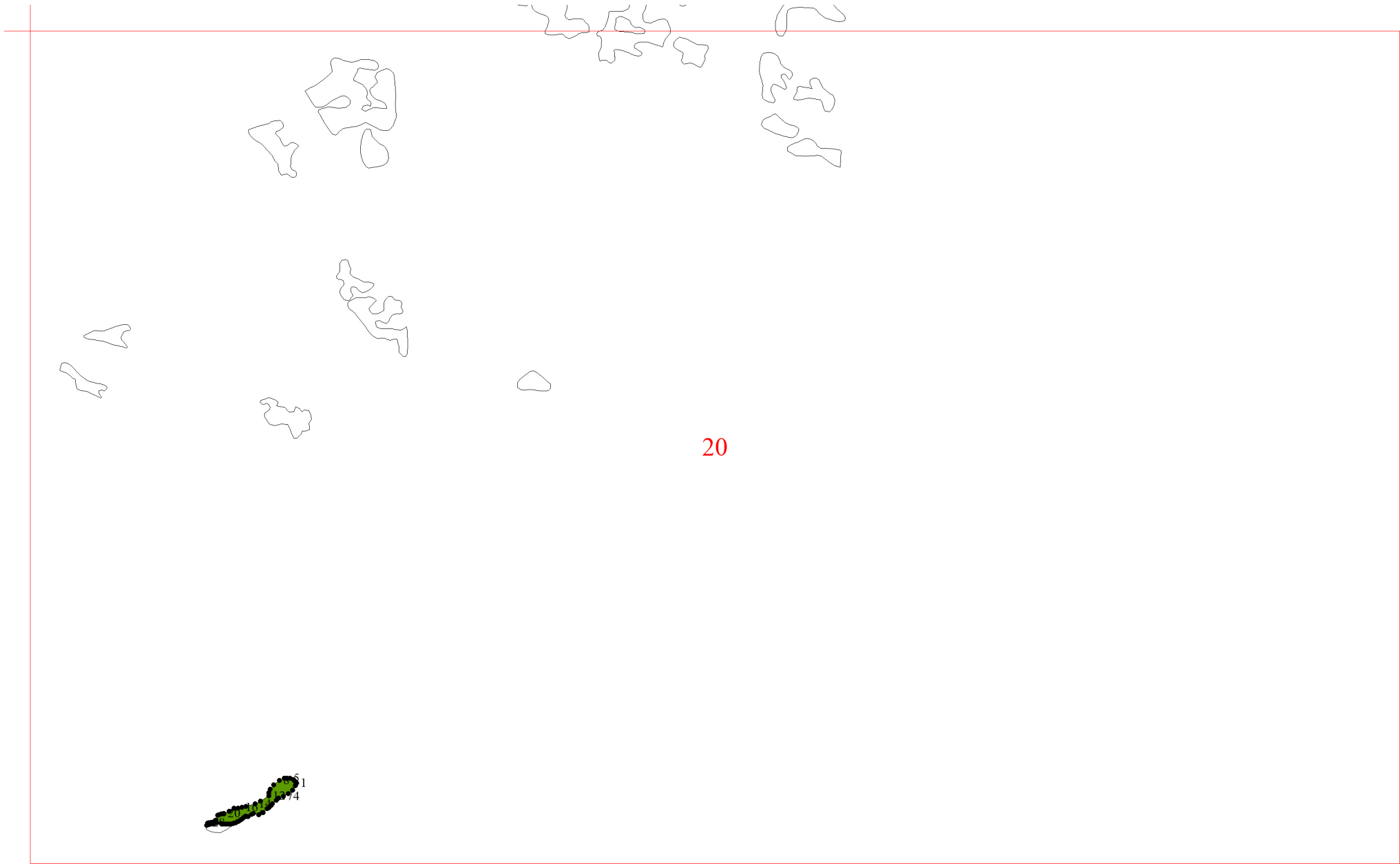
1
39
8

16





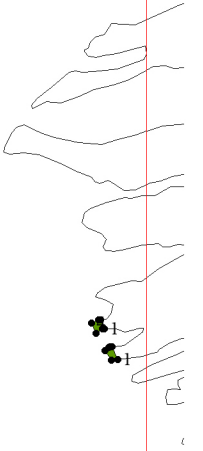




7



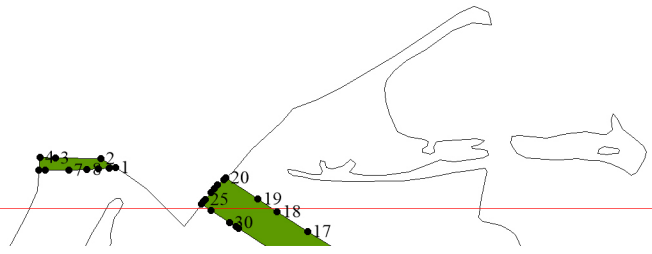
21



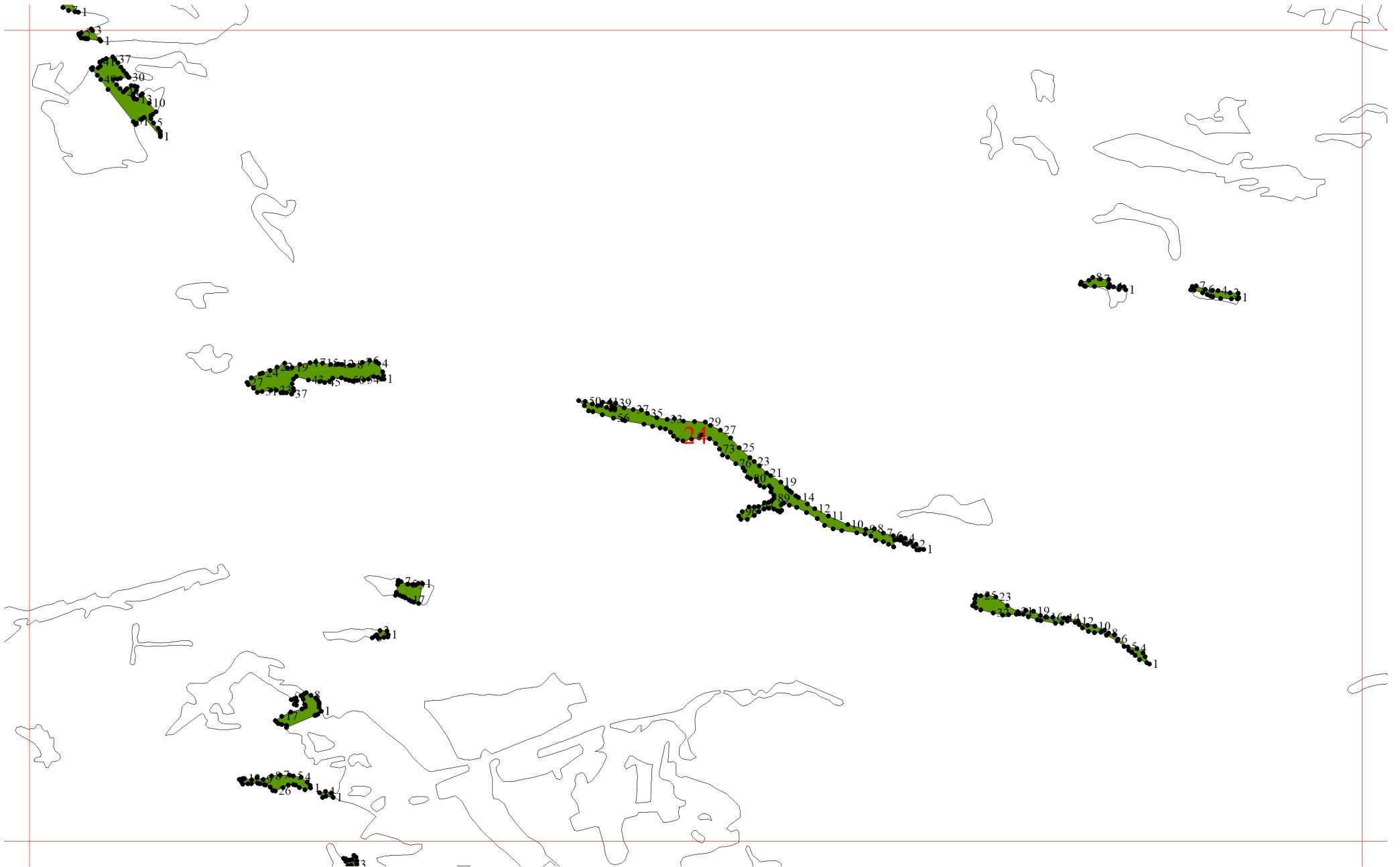
21



23



23



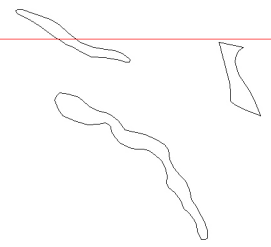


25

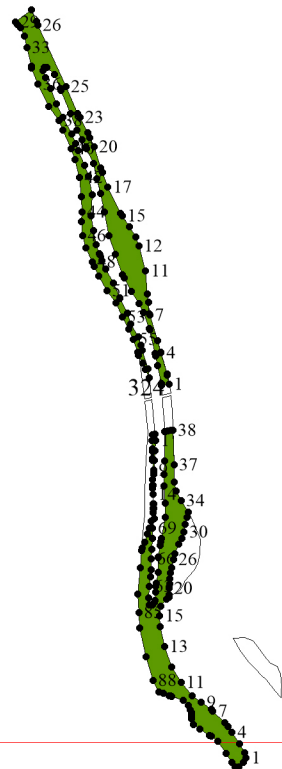
25

12

25

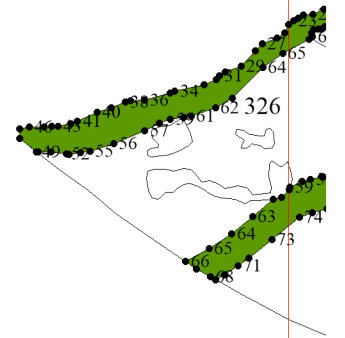


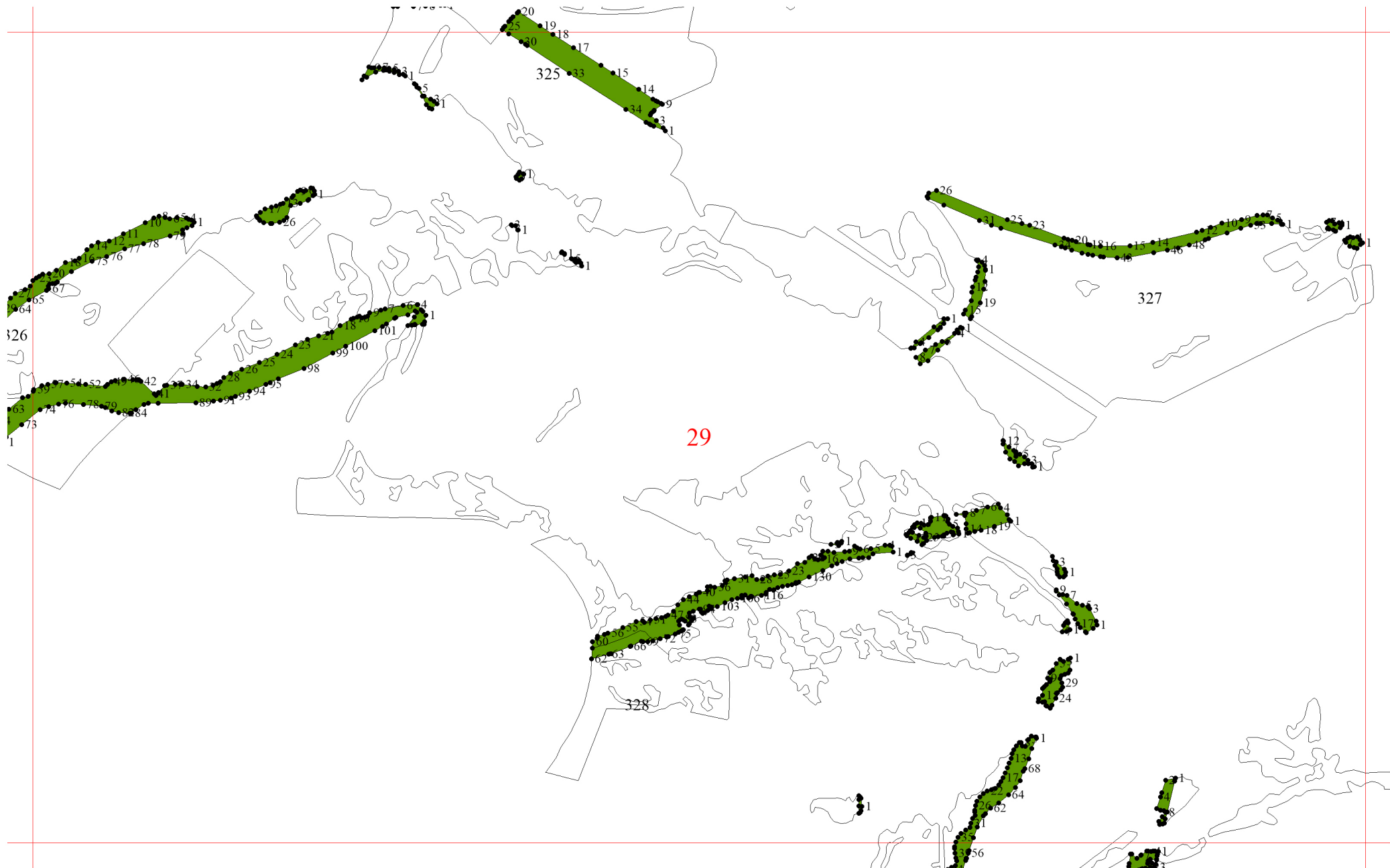
26

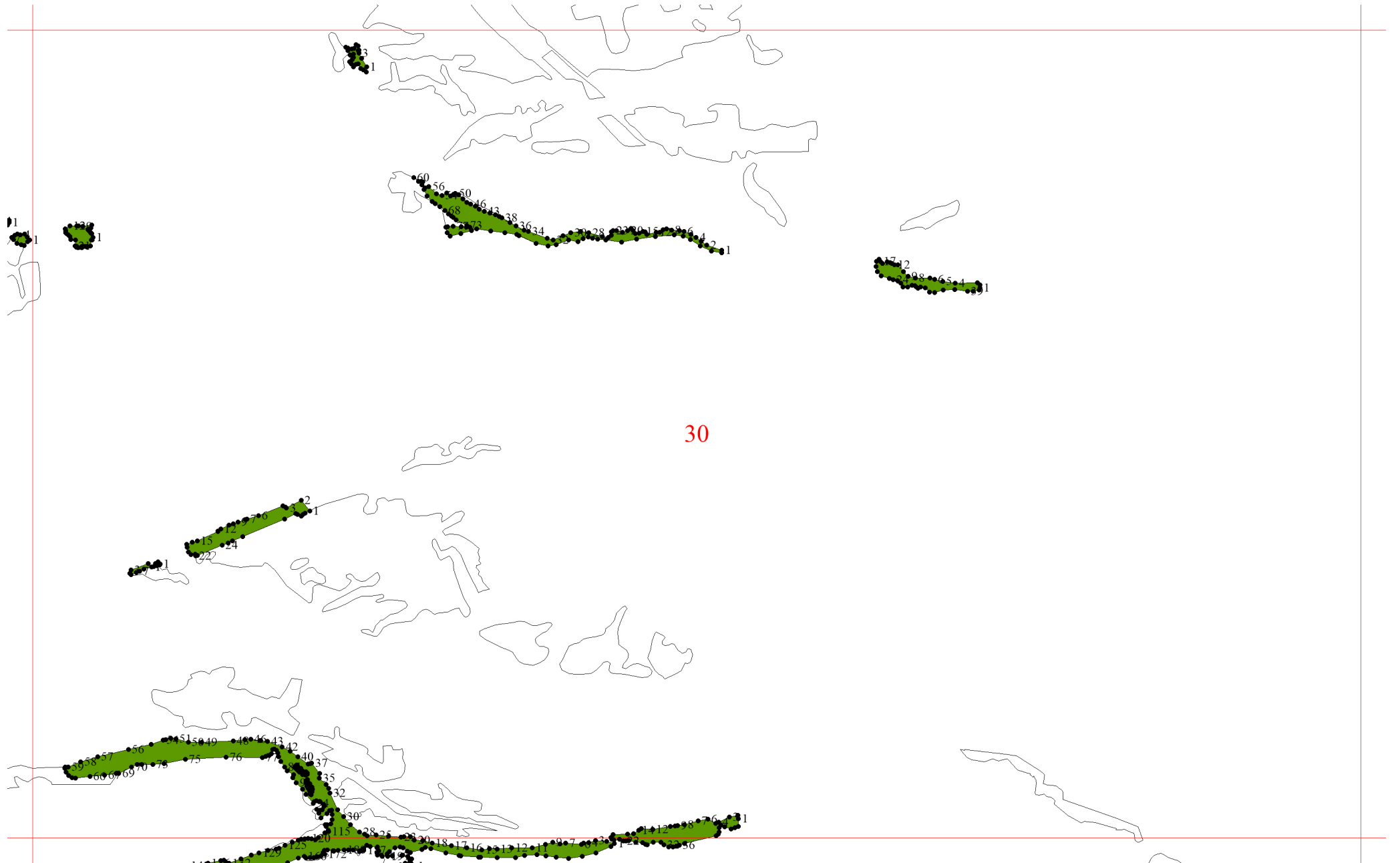


27

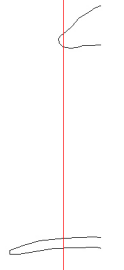
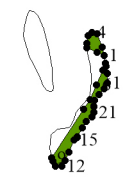
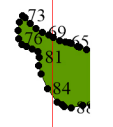
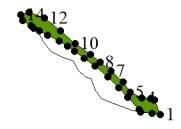
28

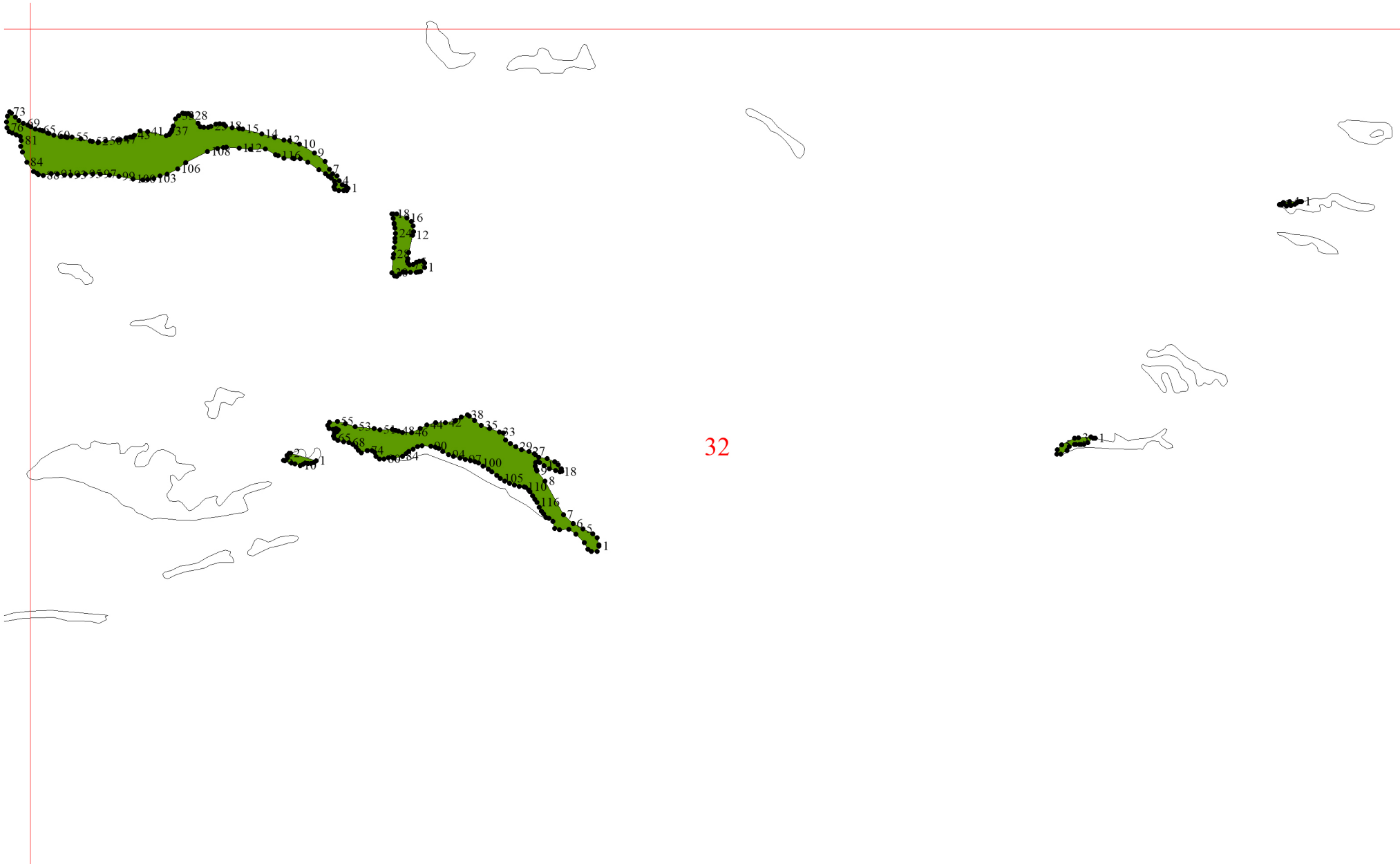


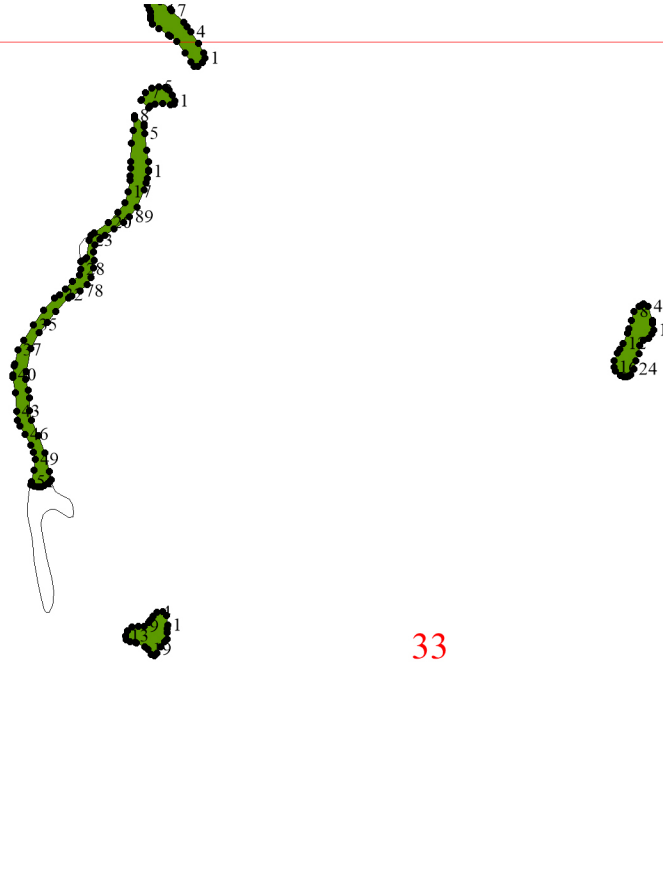




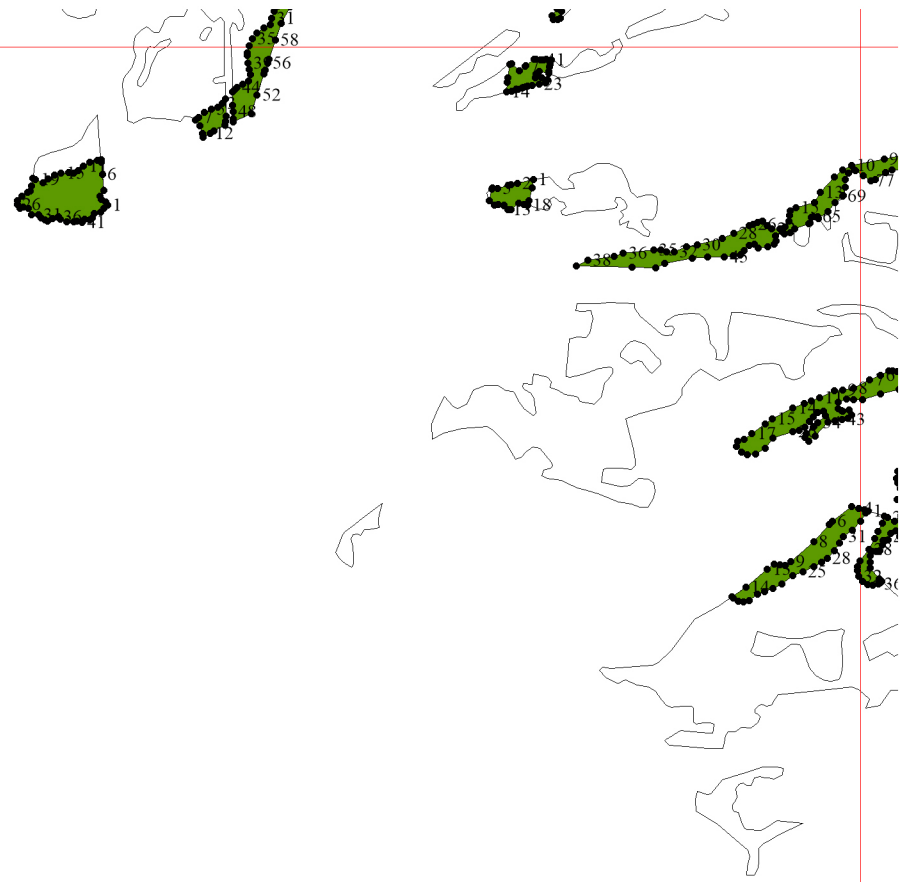
31







33



34

