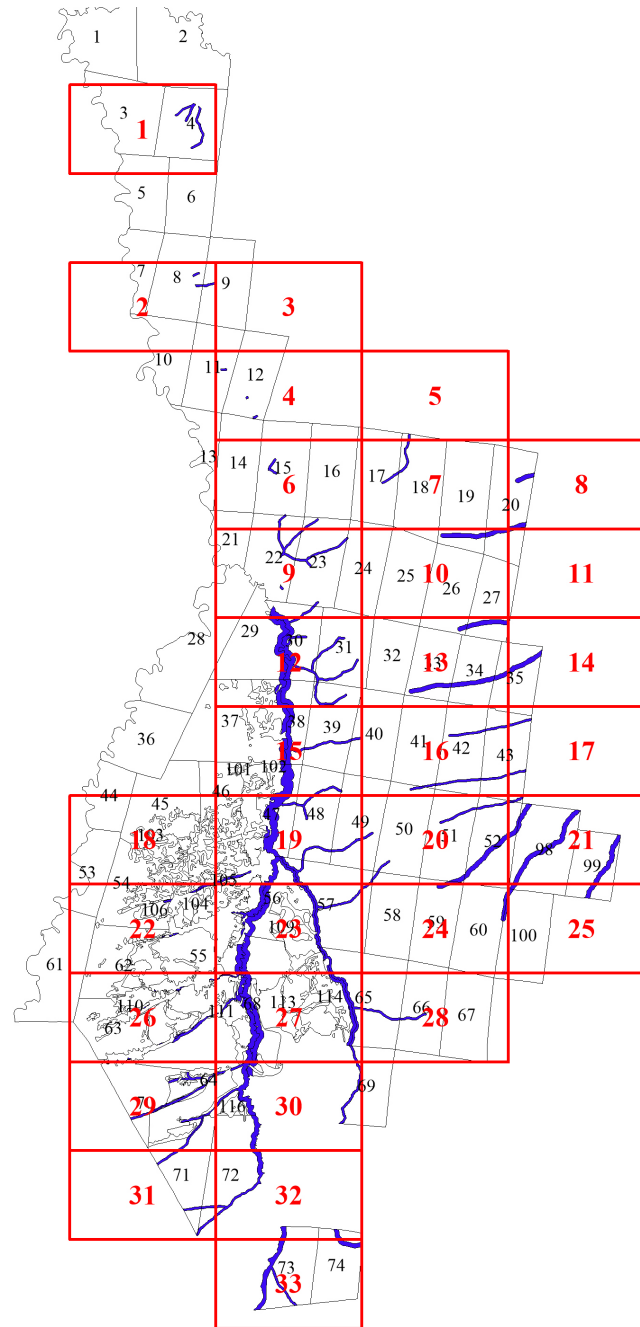
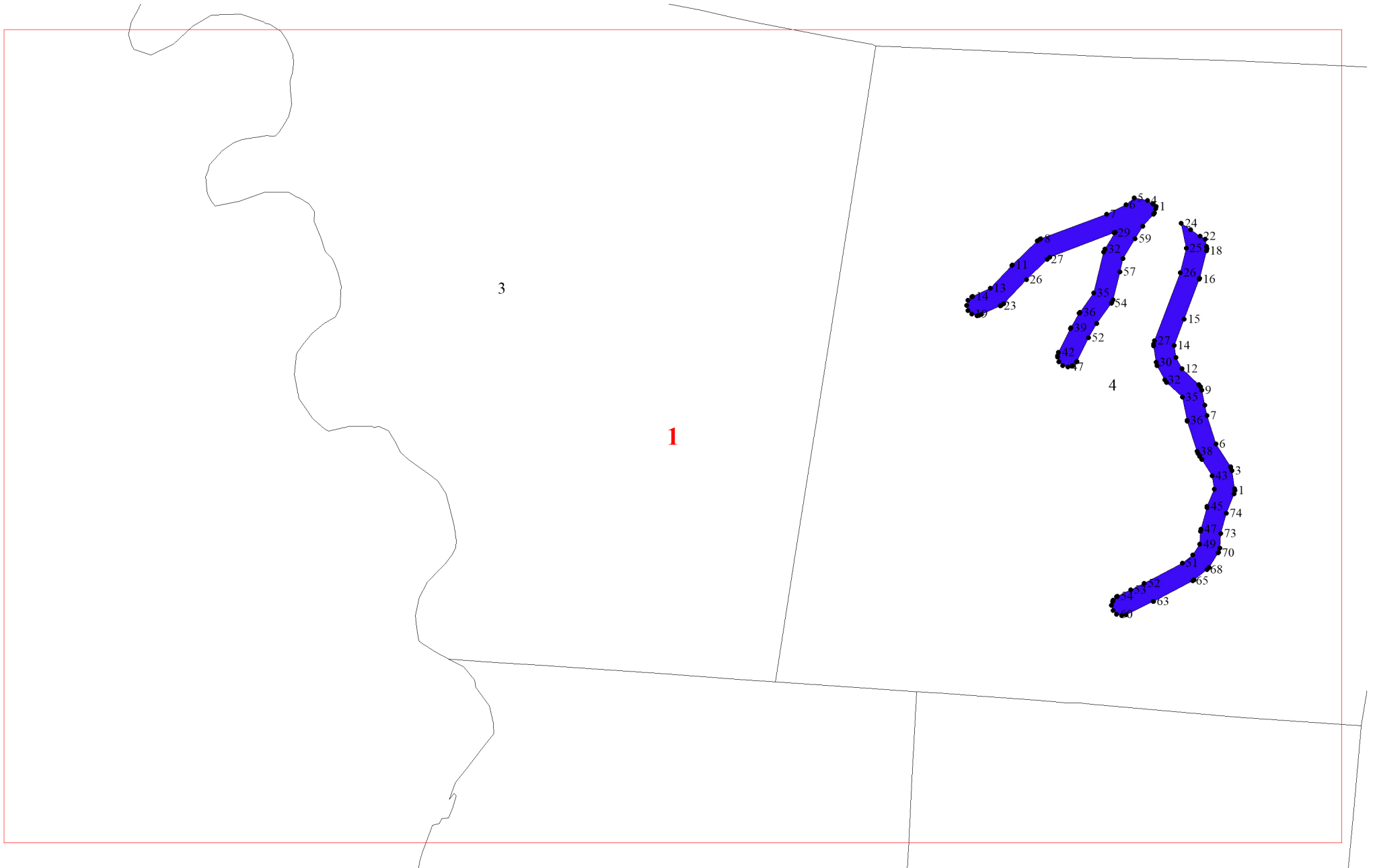


**Графическое описание местоположения
границ земель, на которых располагаются
леса, расположенные в водоохранных зонах,
на территории Михайловского участкового
лесничества Емельяновского лесничества
Красноярского края**

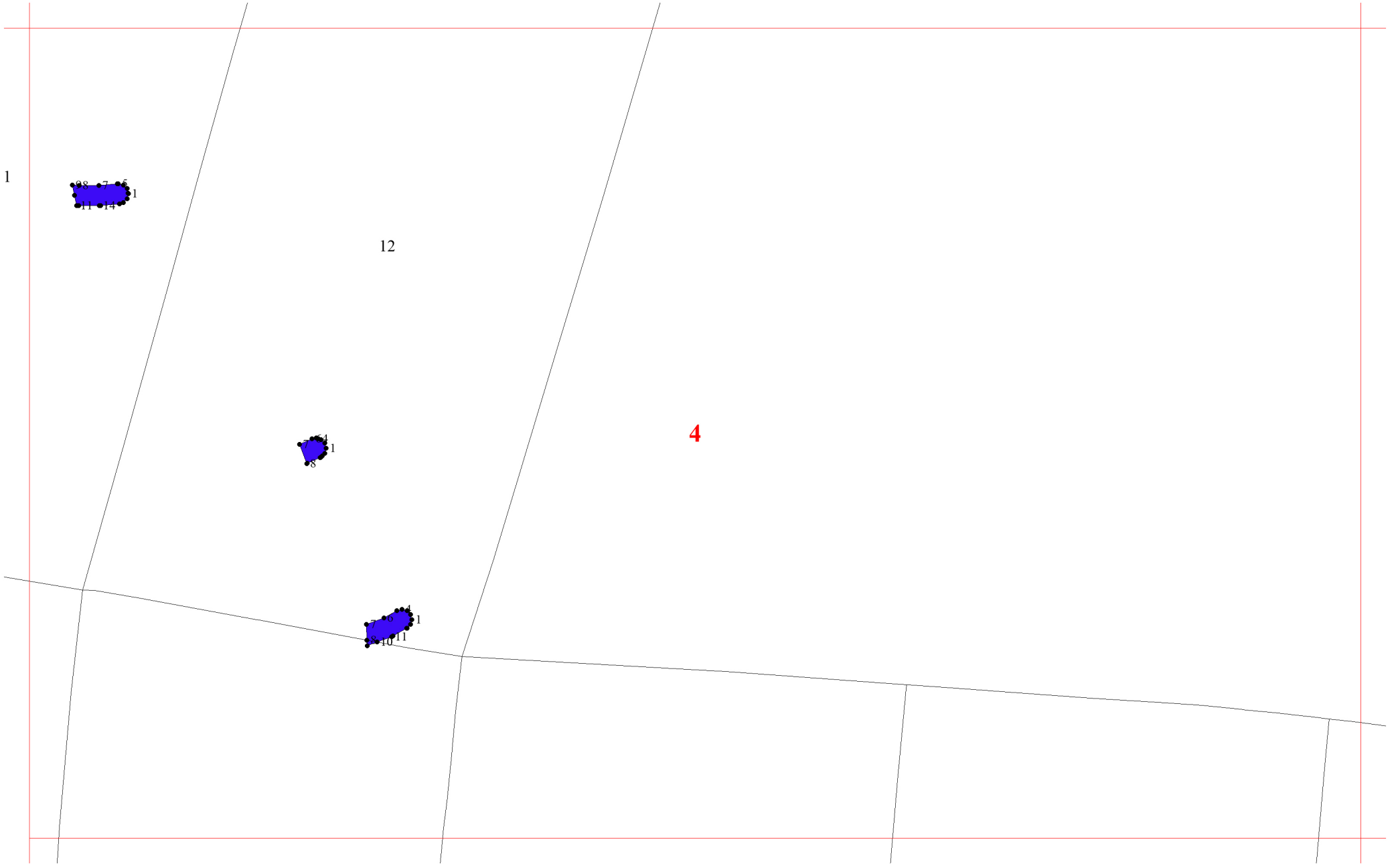


Условные обозначения:

- 1** - схема расположения листов
- границы:
 - - участковых лесничеств
 - - участков
 - - листов



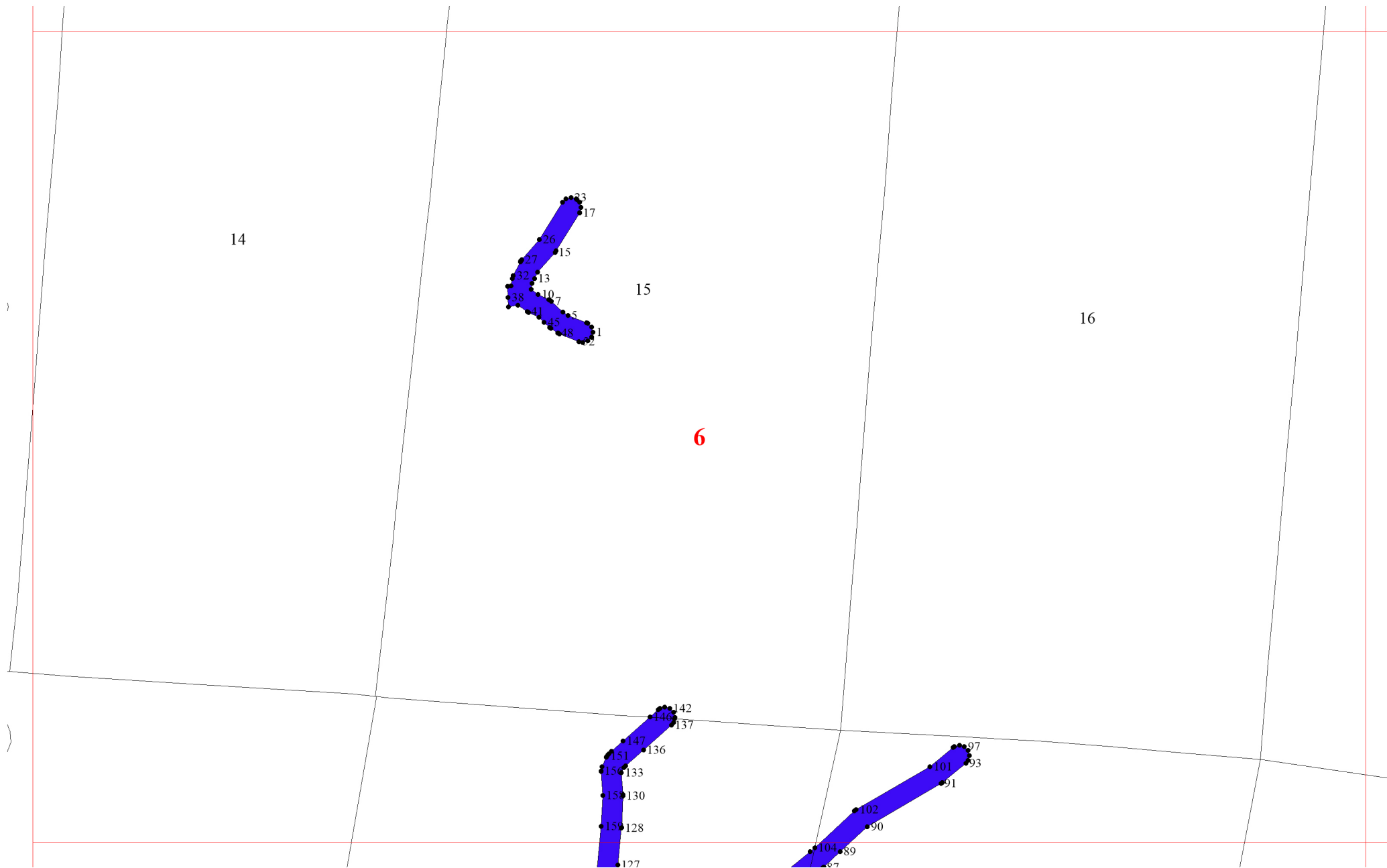


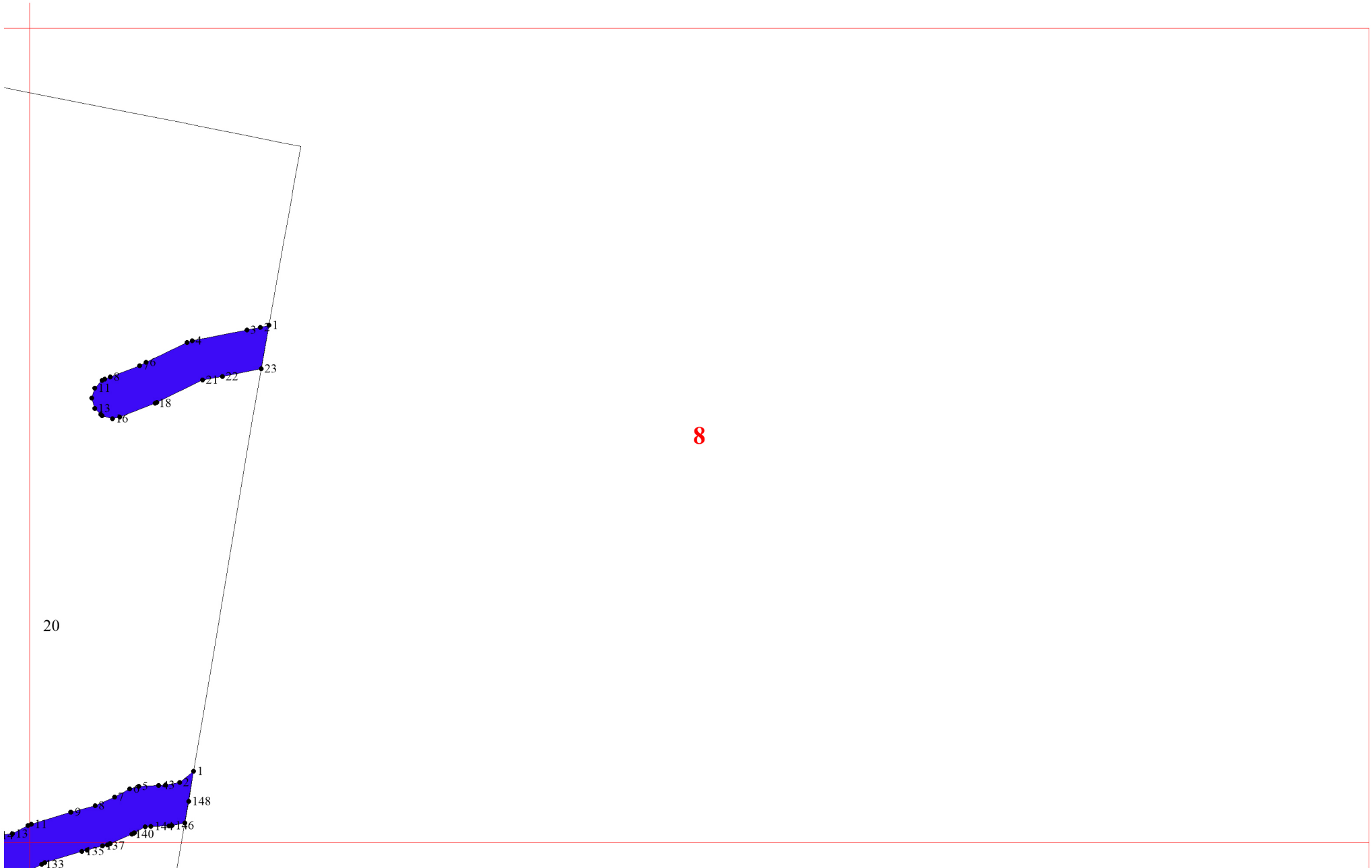


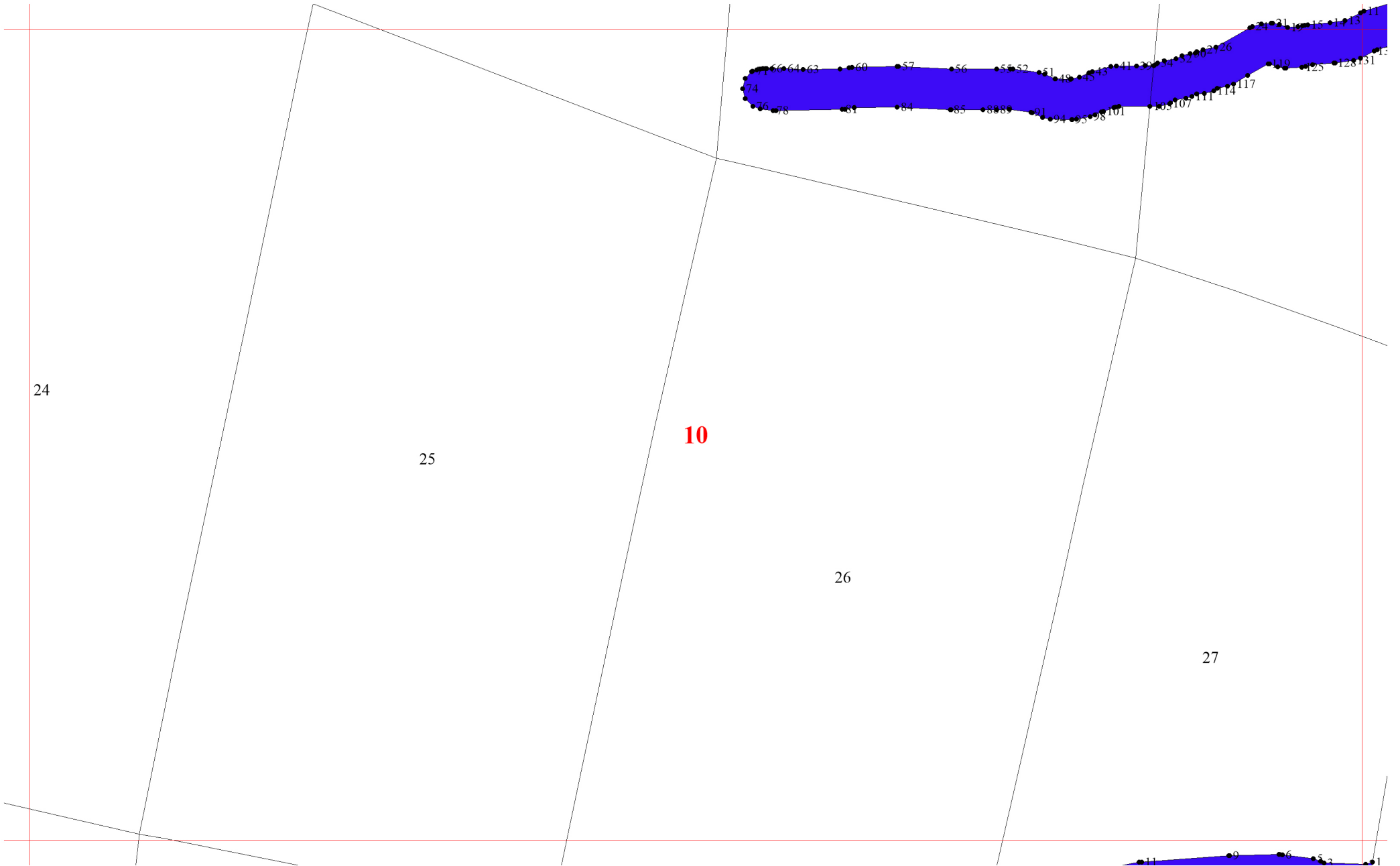
5

19
201
19
197
21
193
27
180

5







24

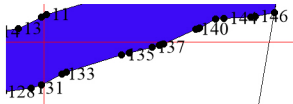
25

10

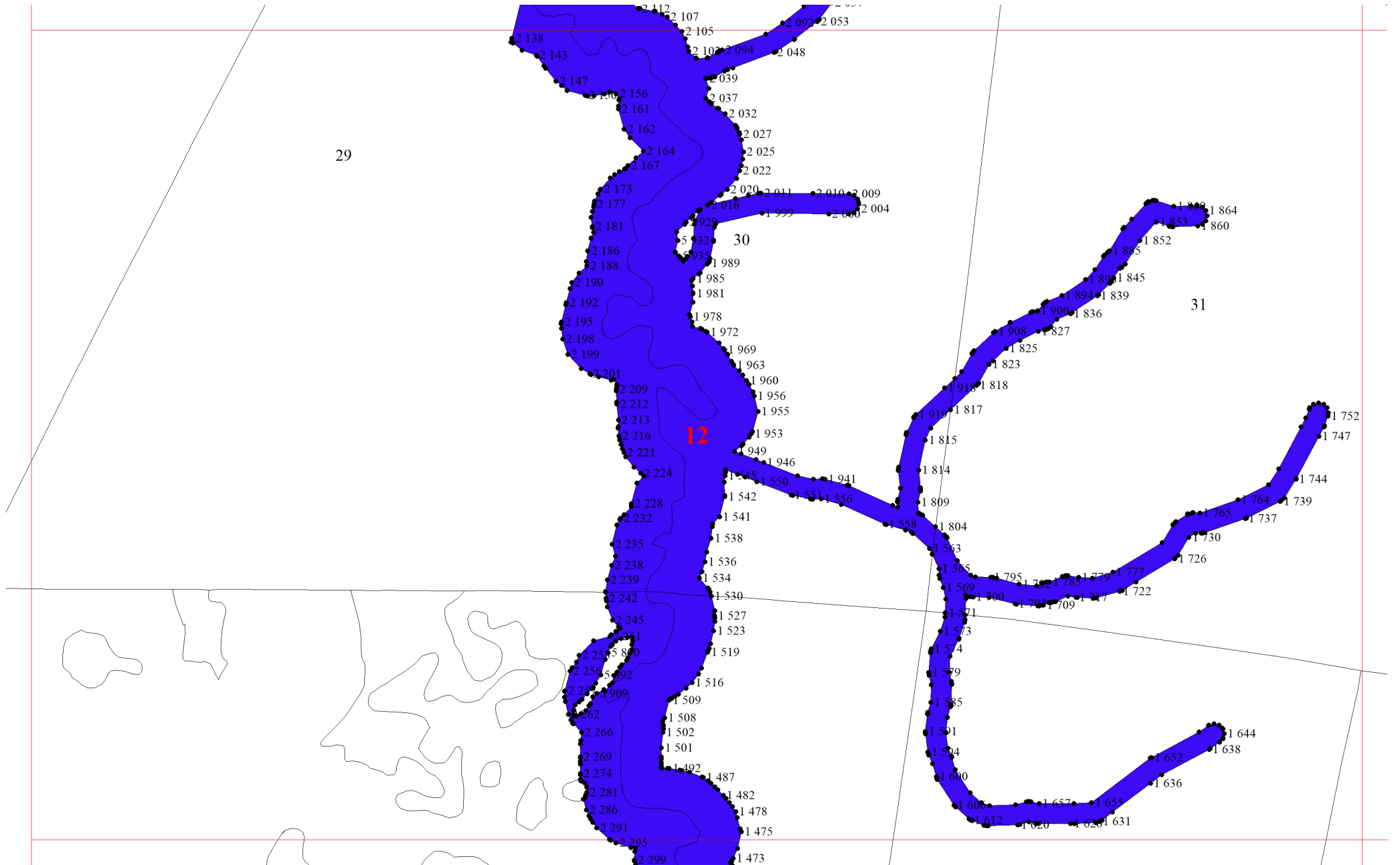
26

27

10



11

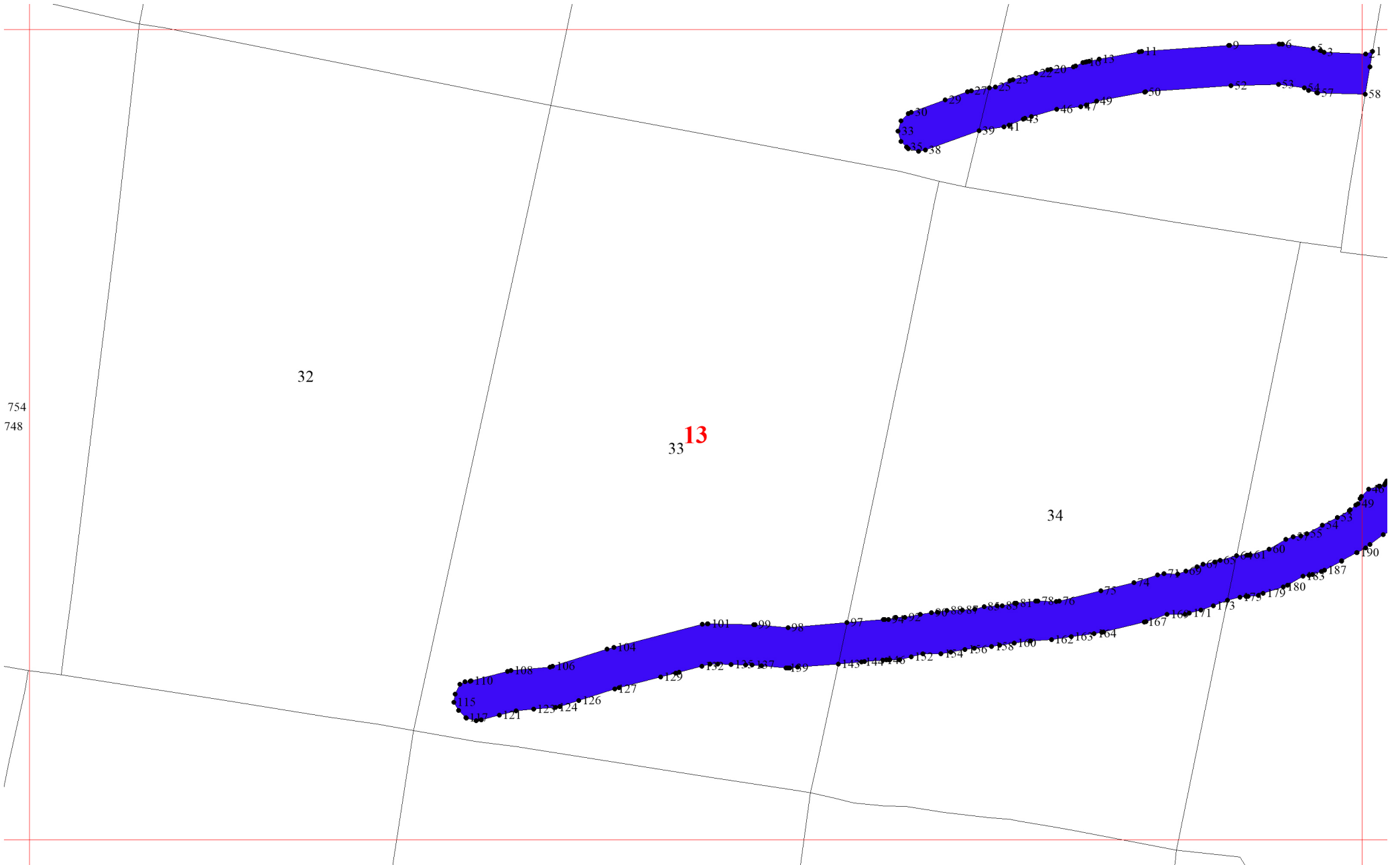


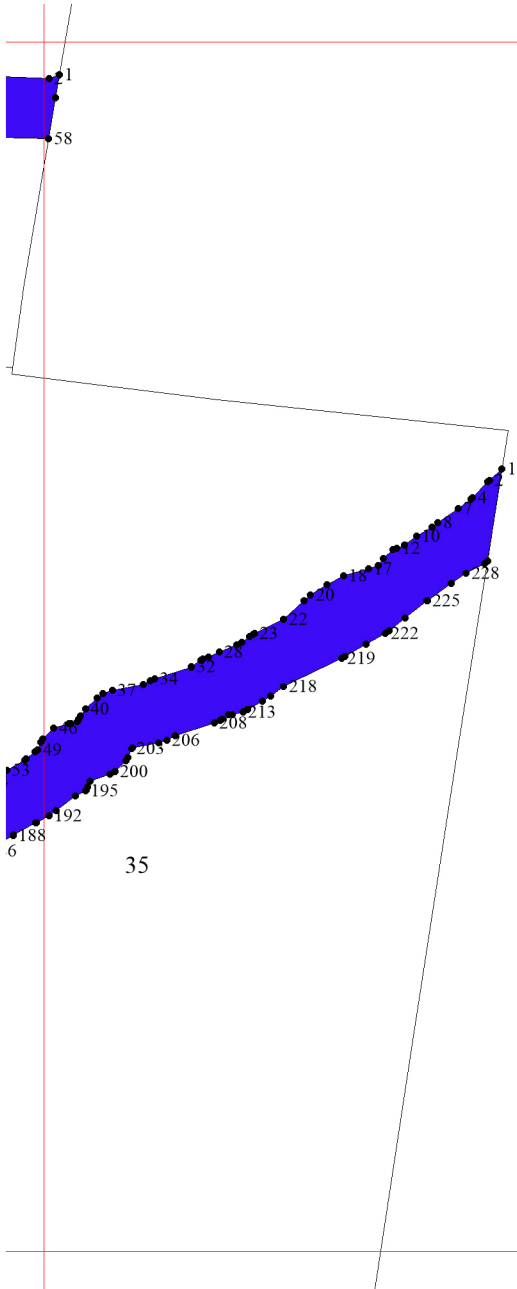
29

12

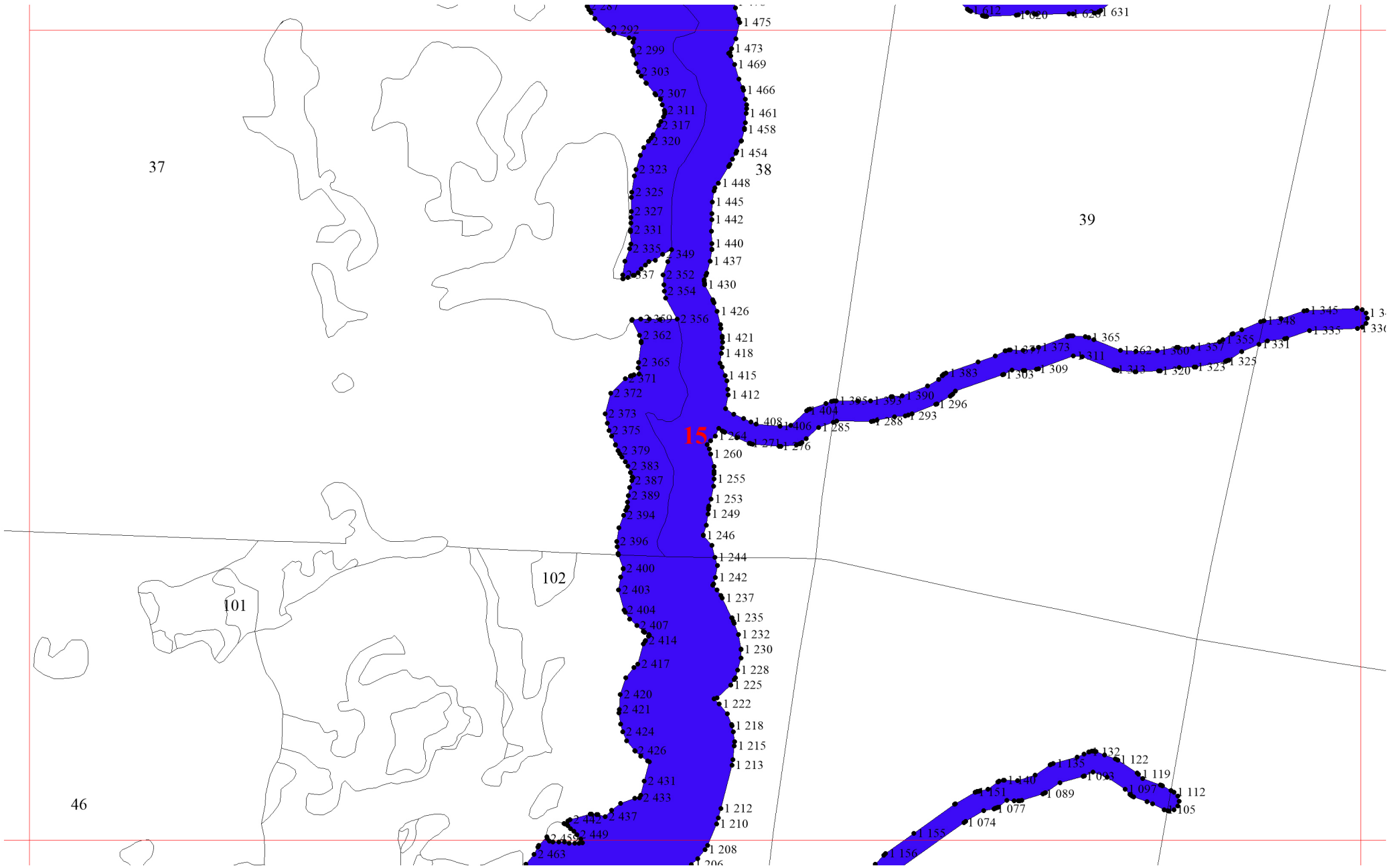
30

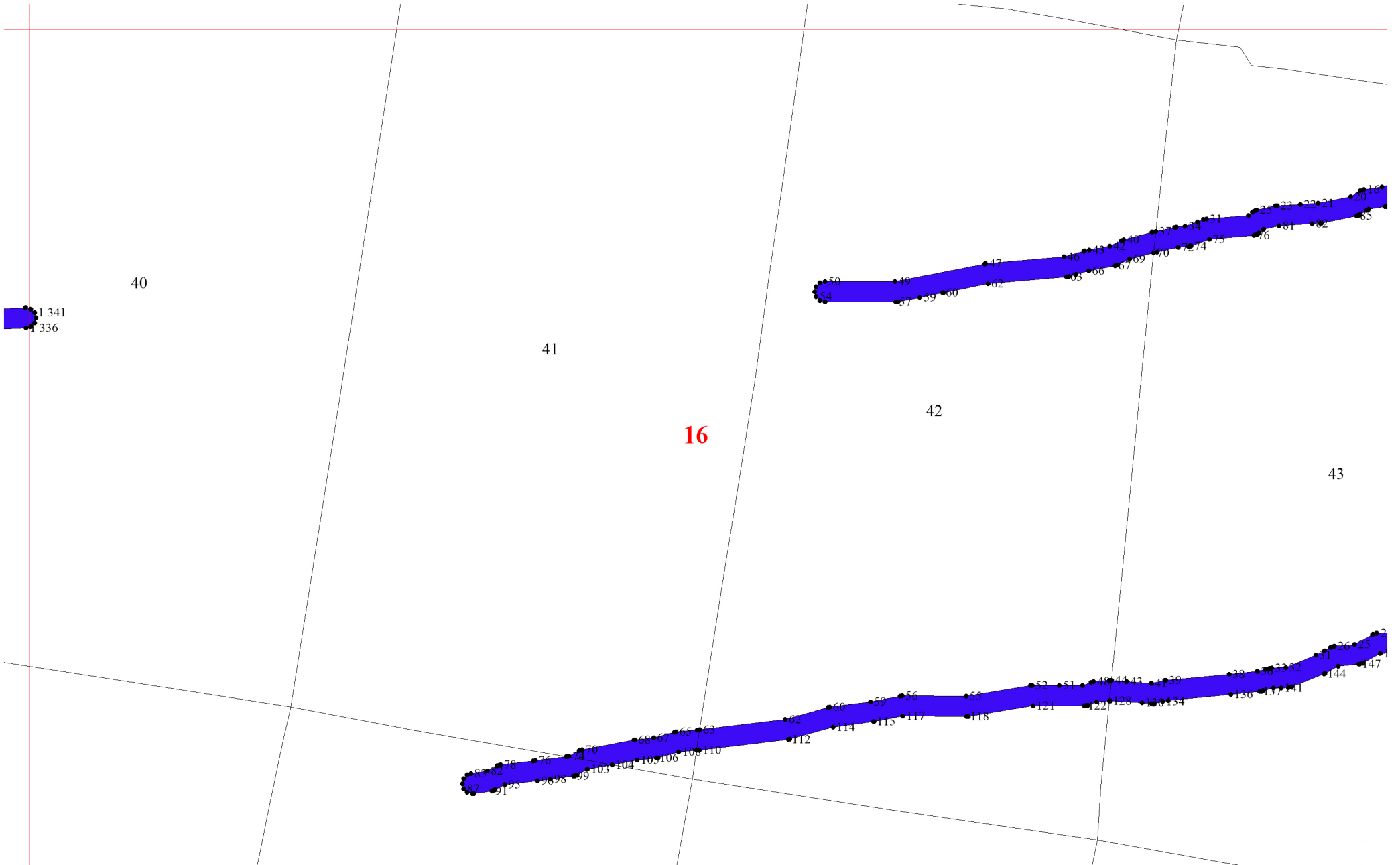
31

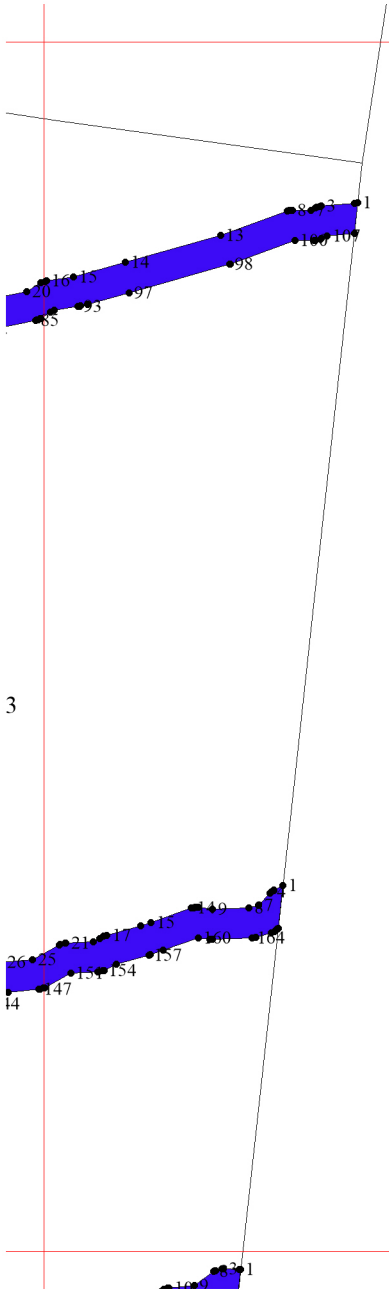




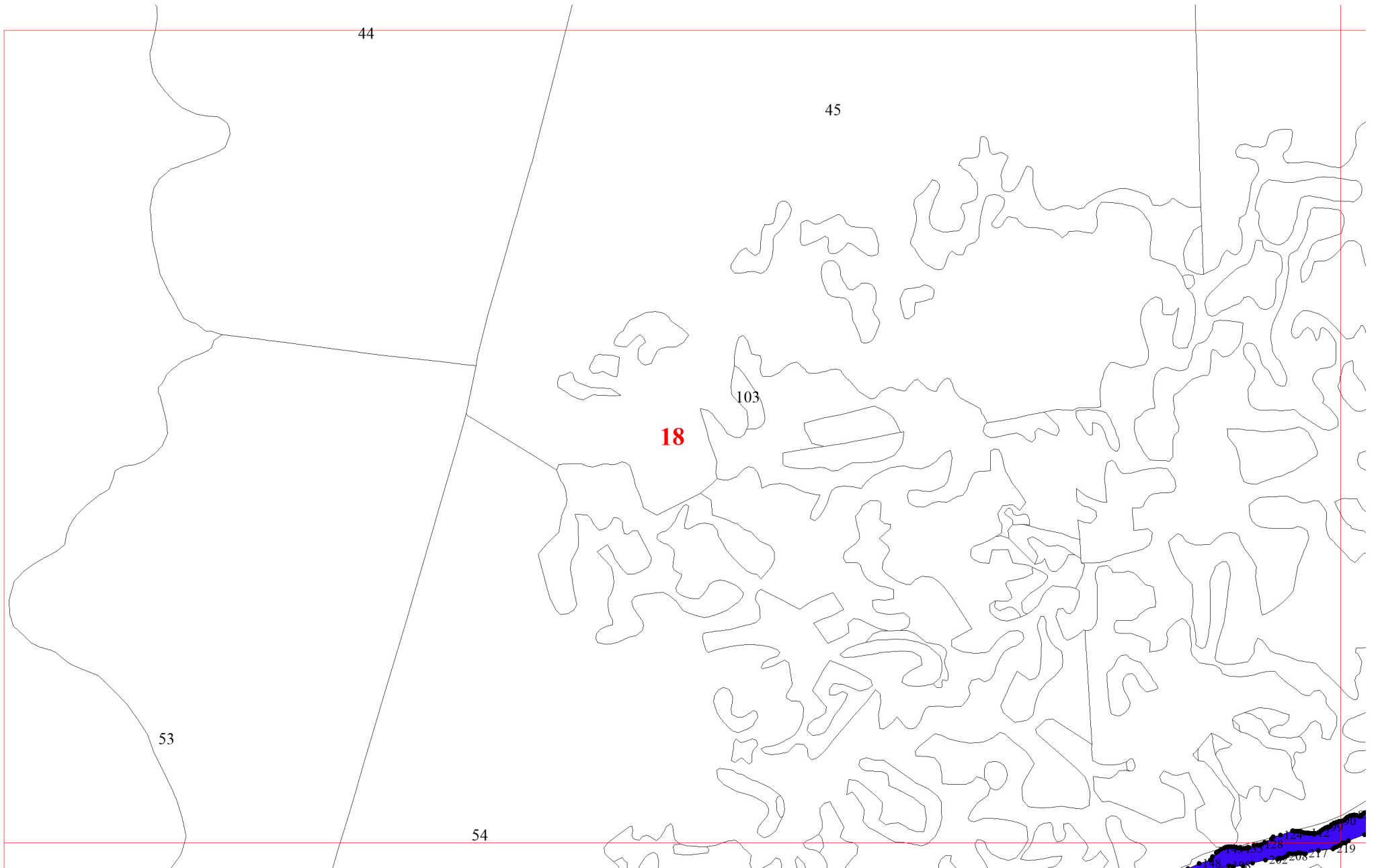
14

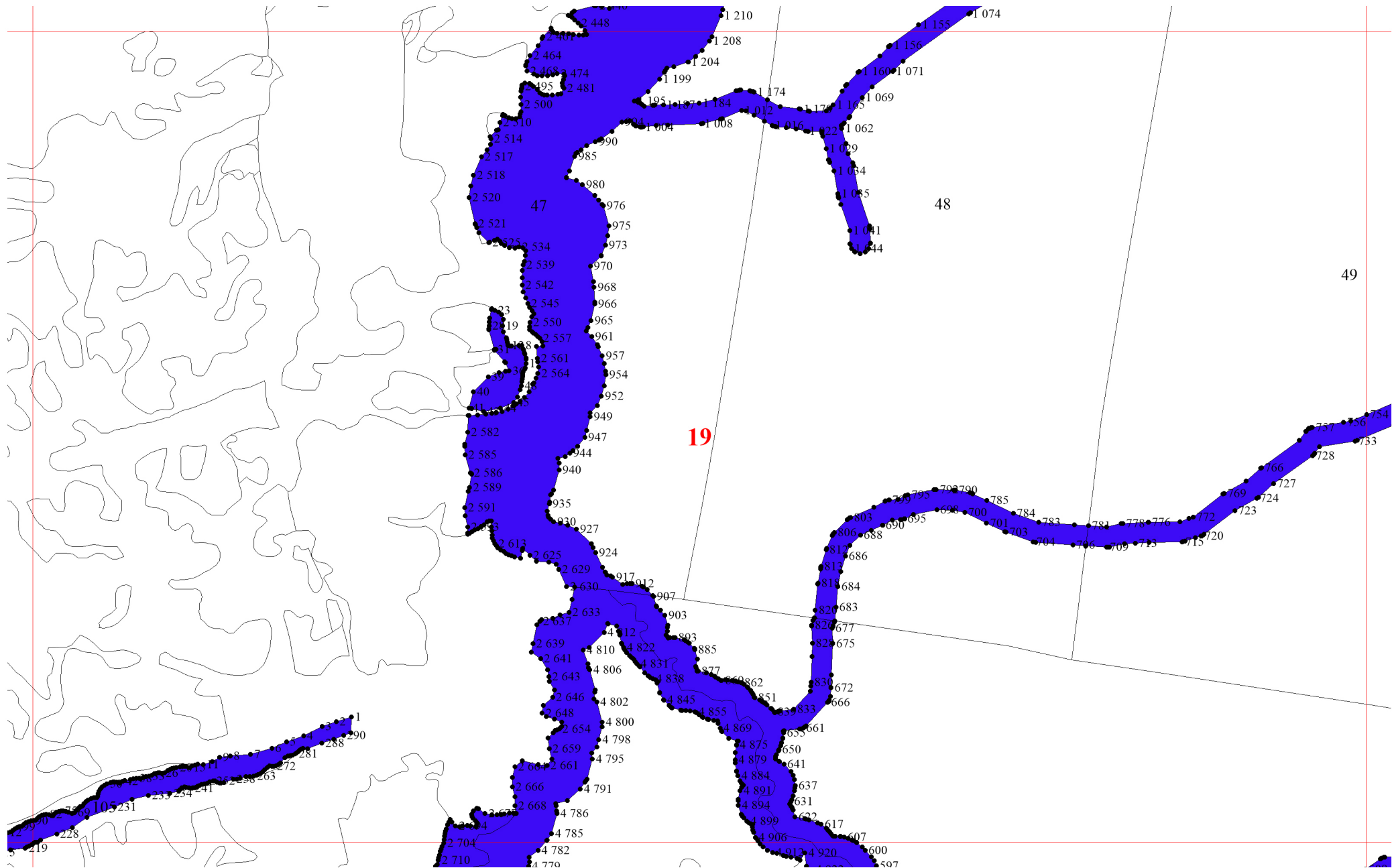


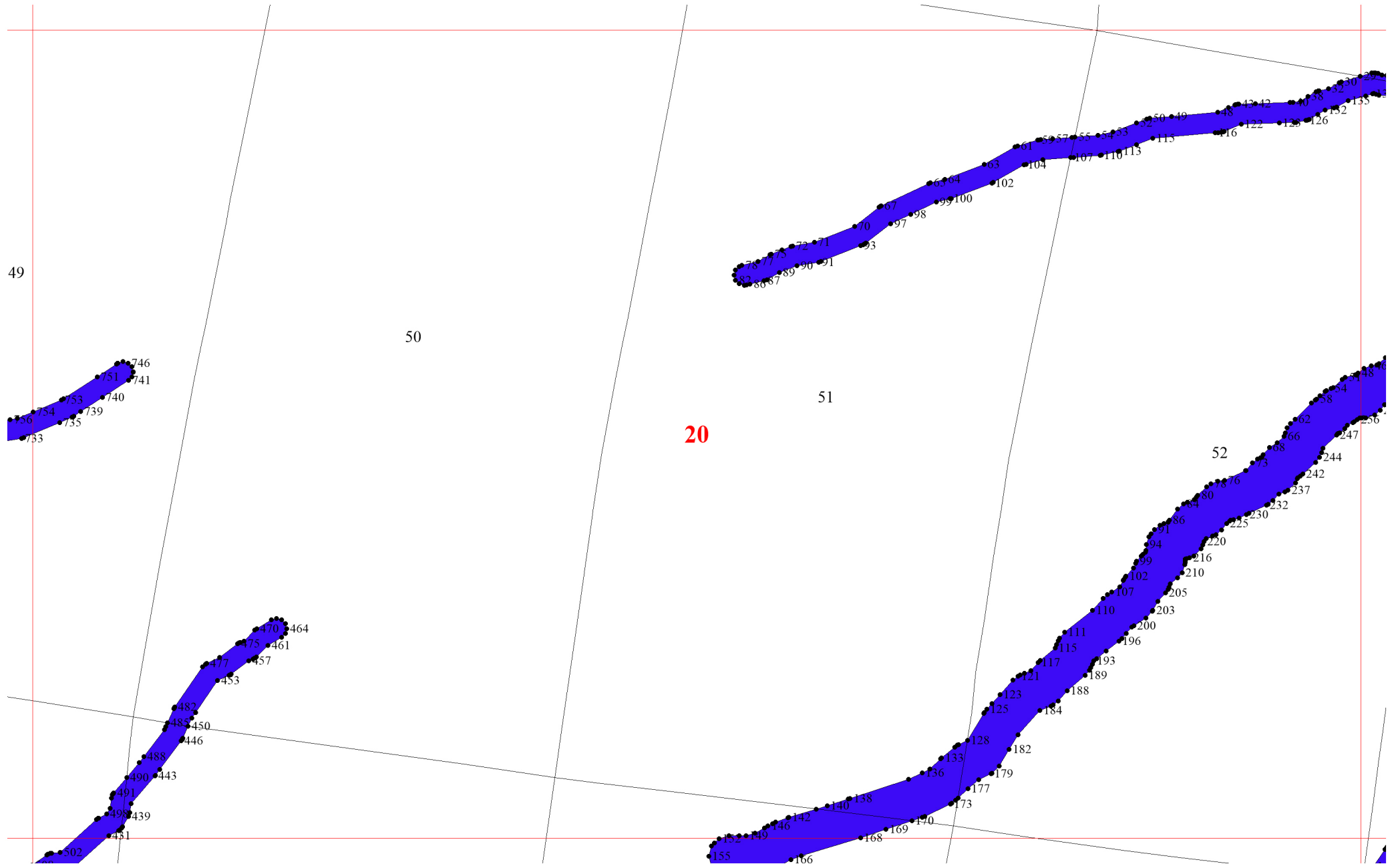


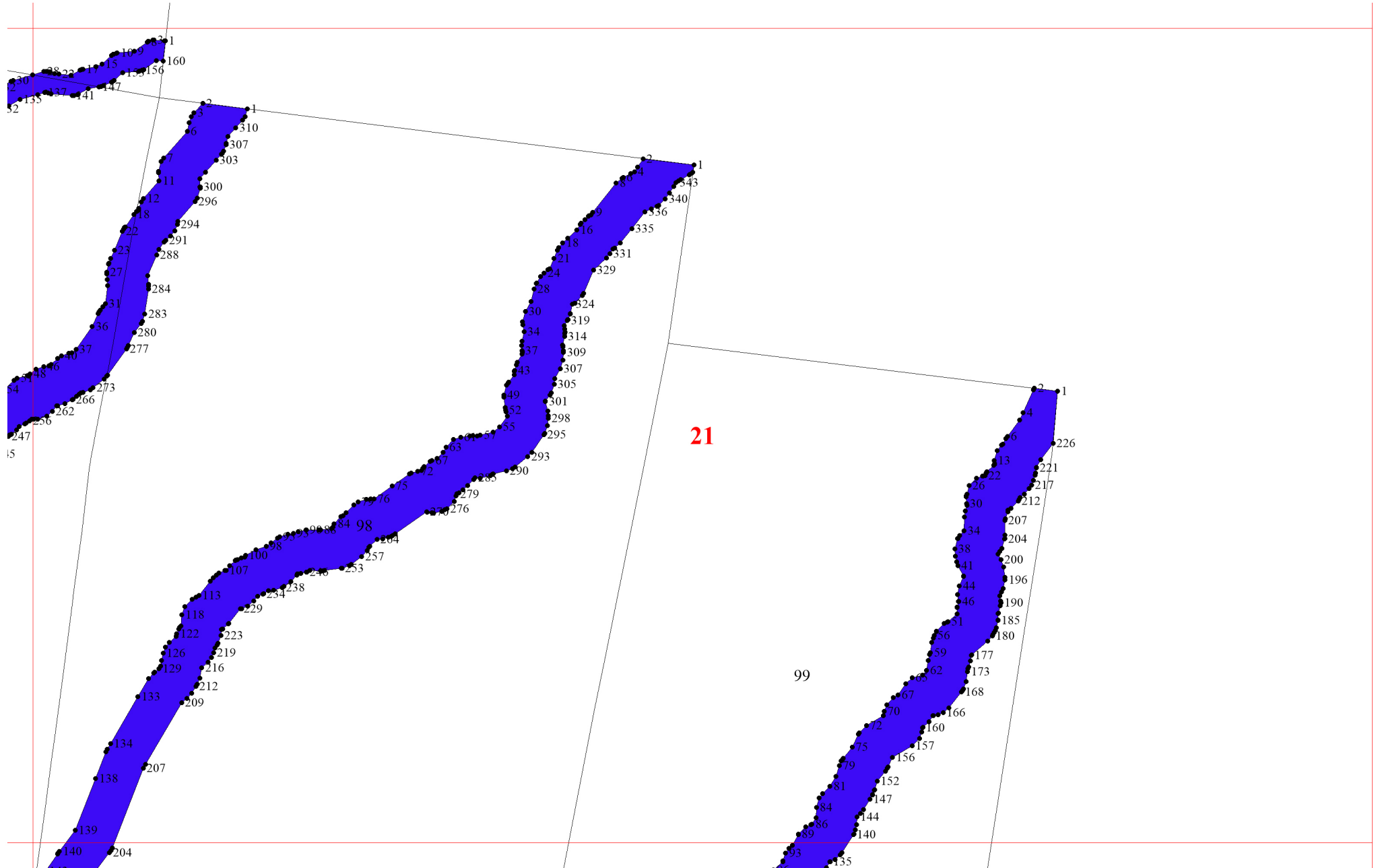


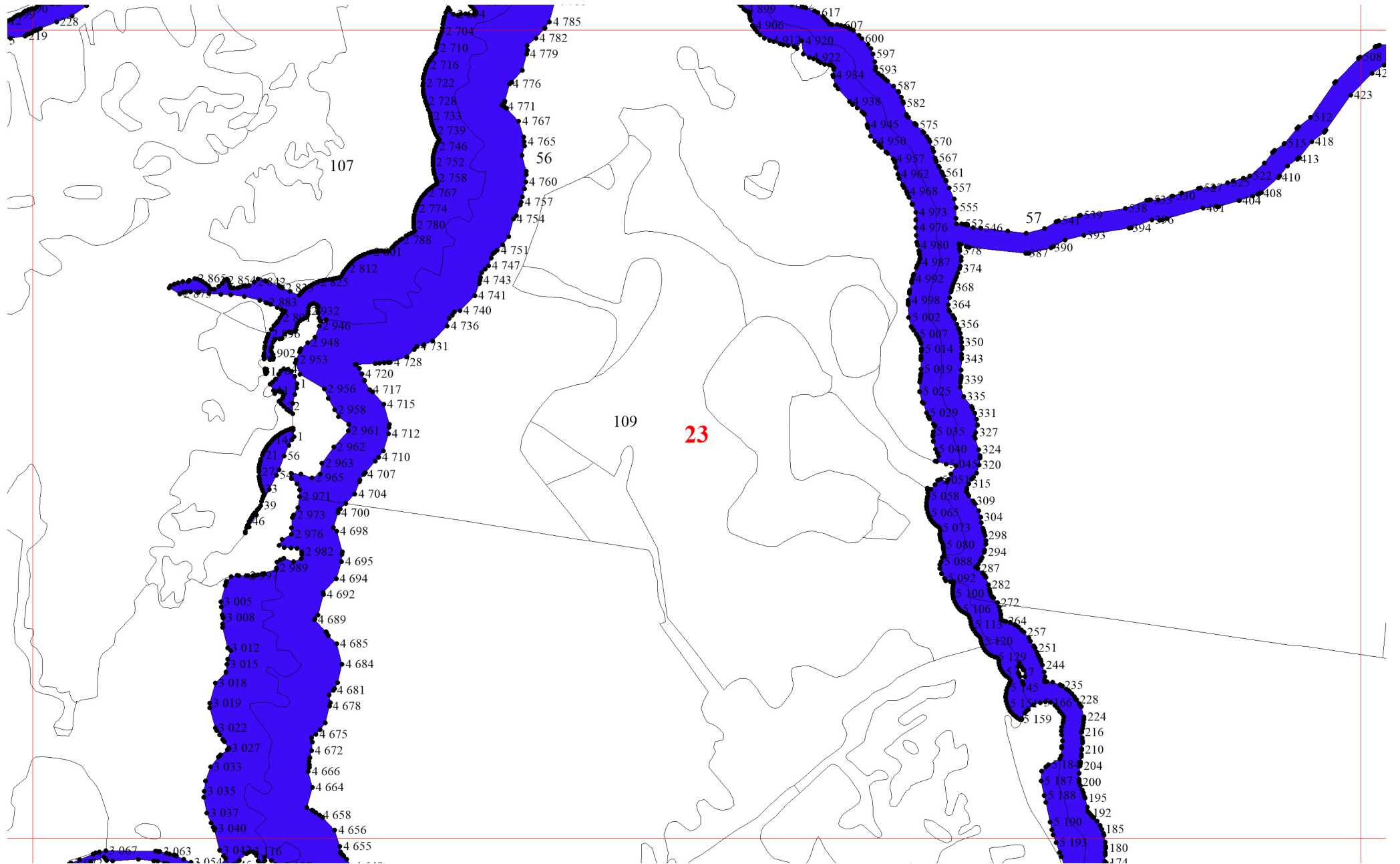
17

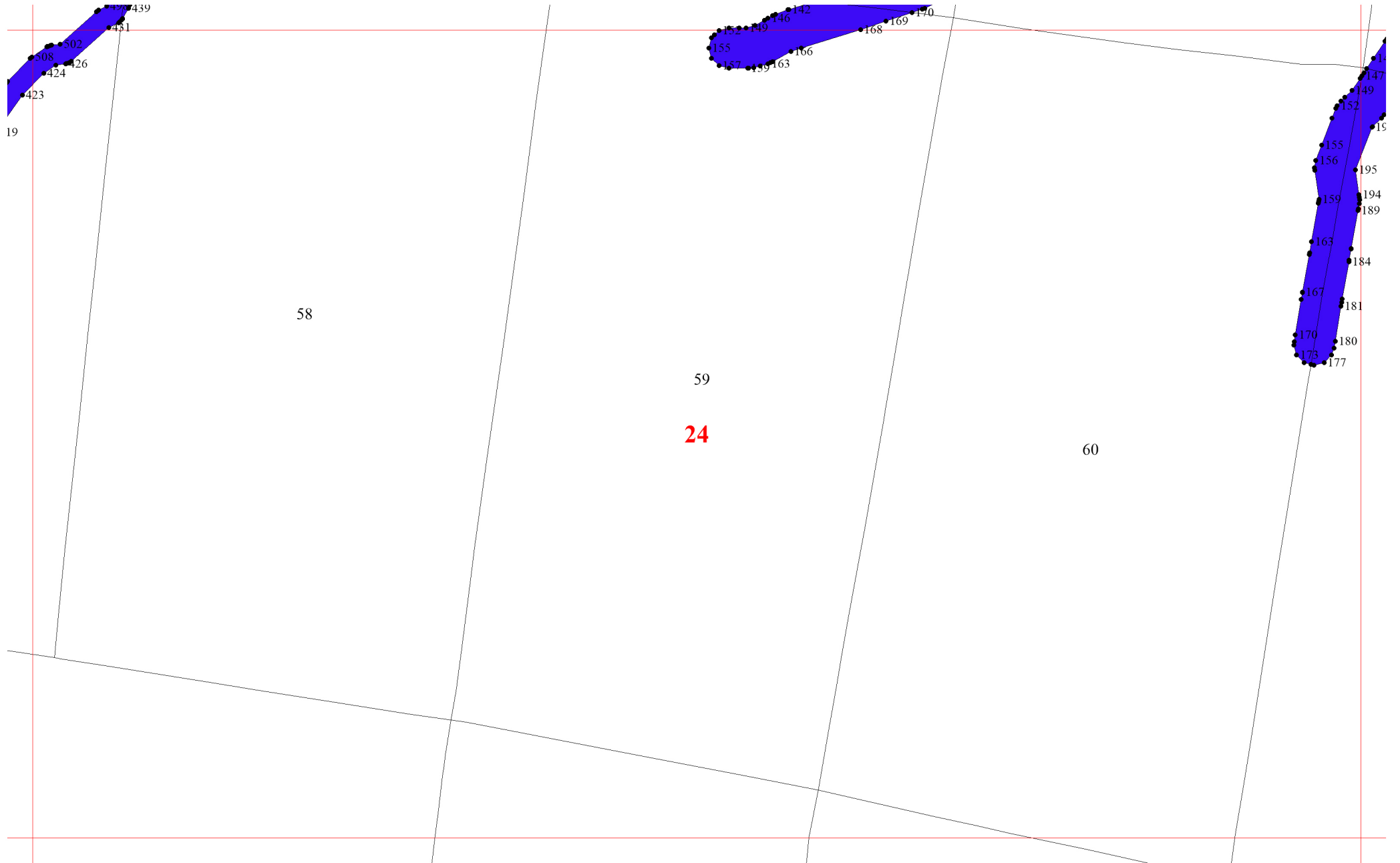


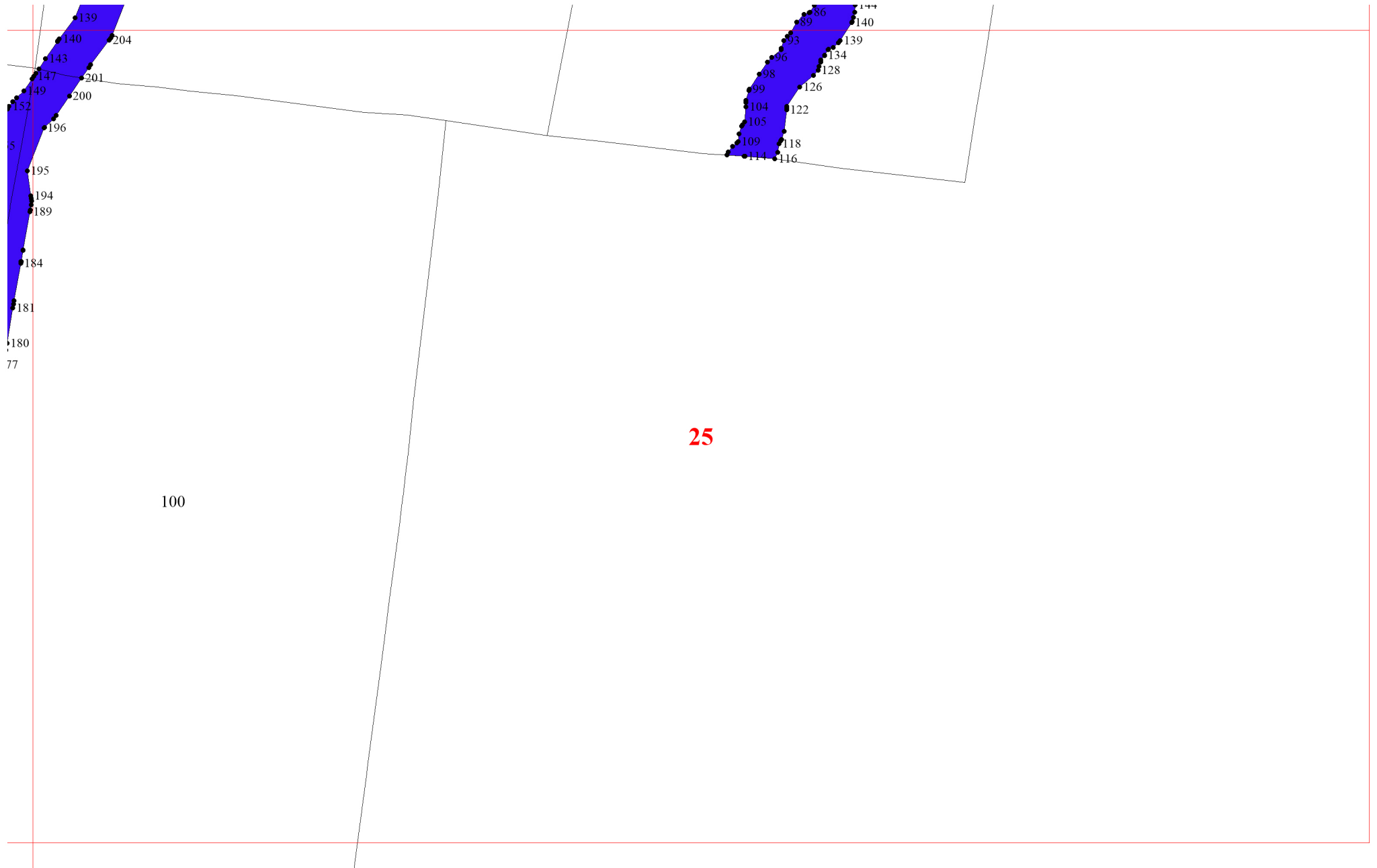






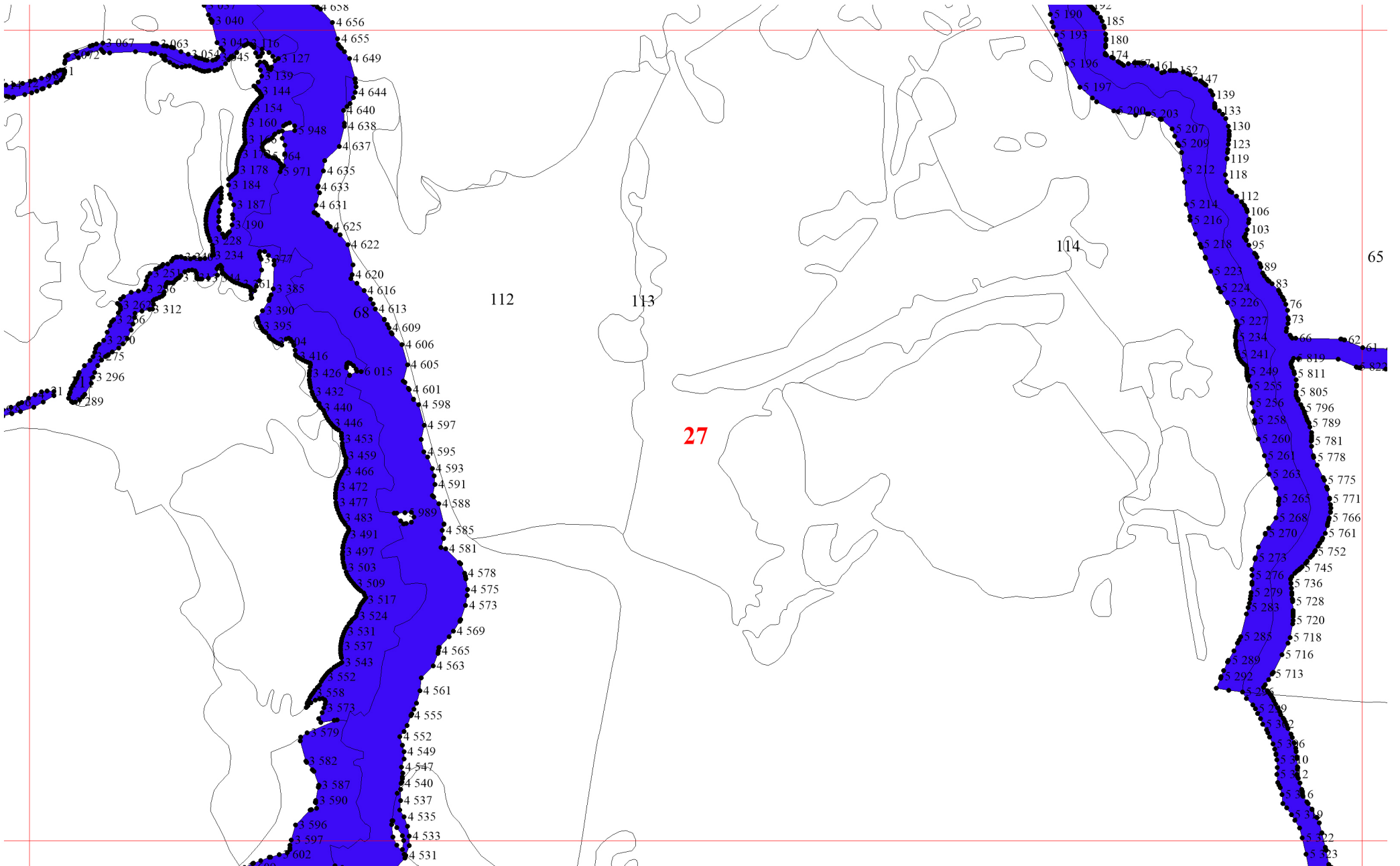


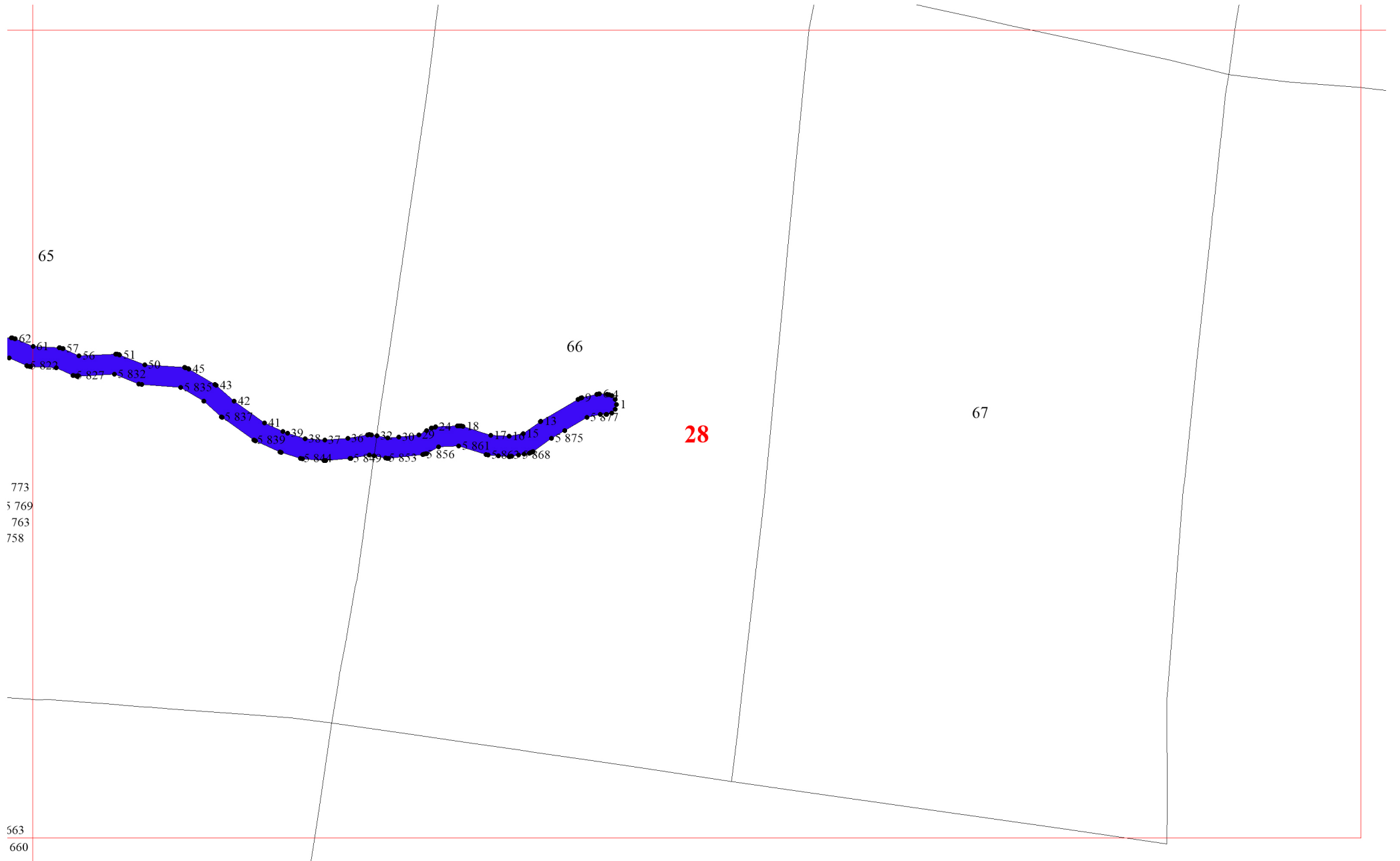


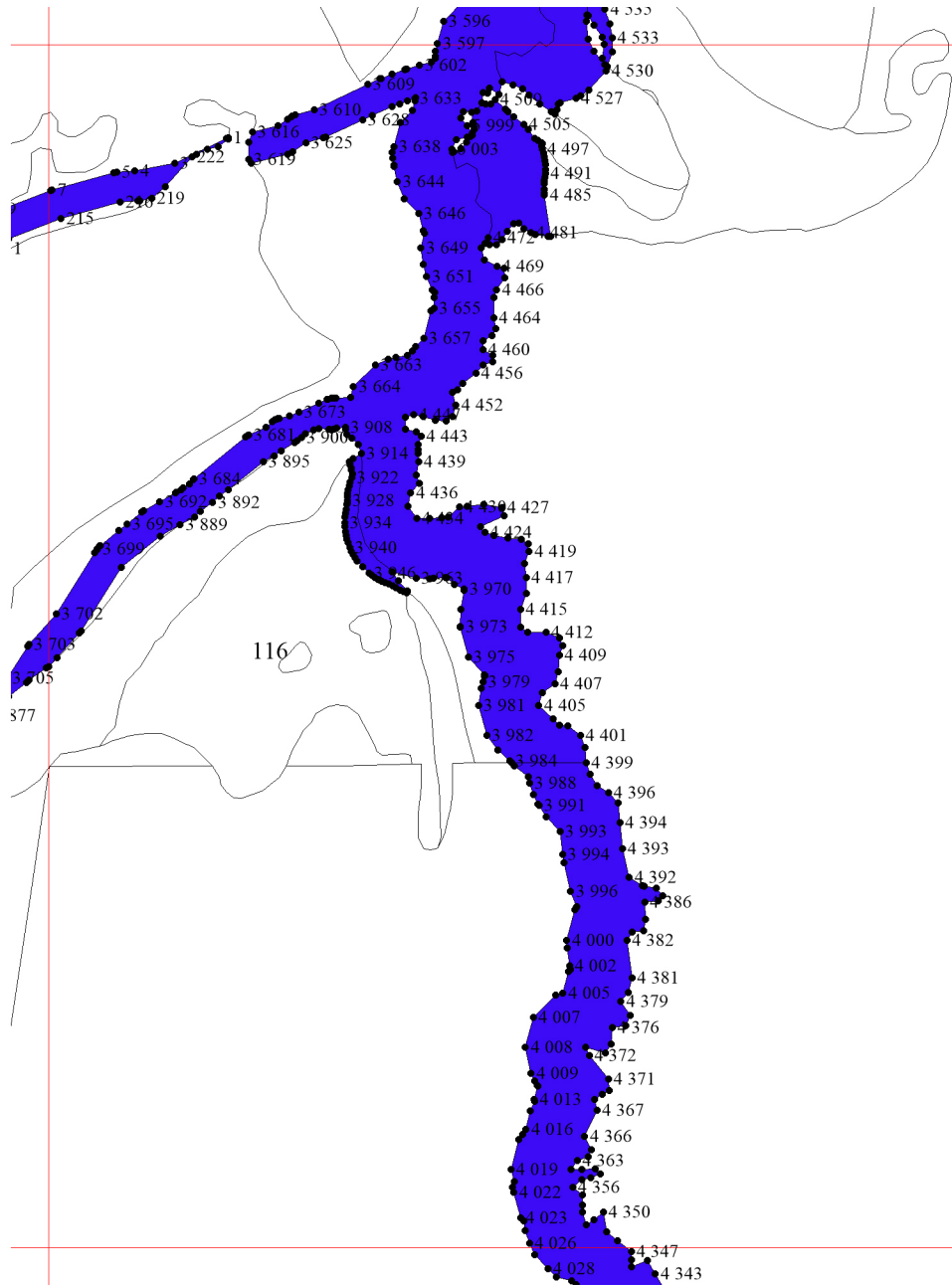


25

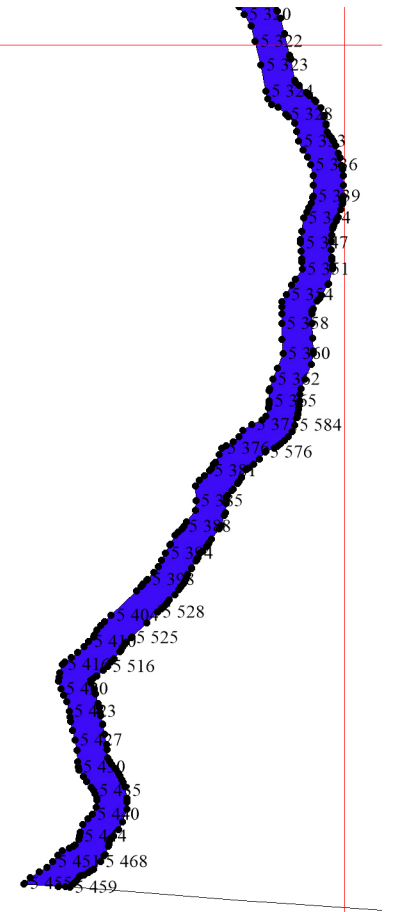
100



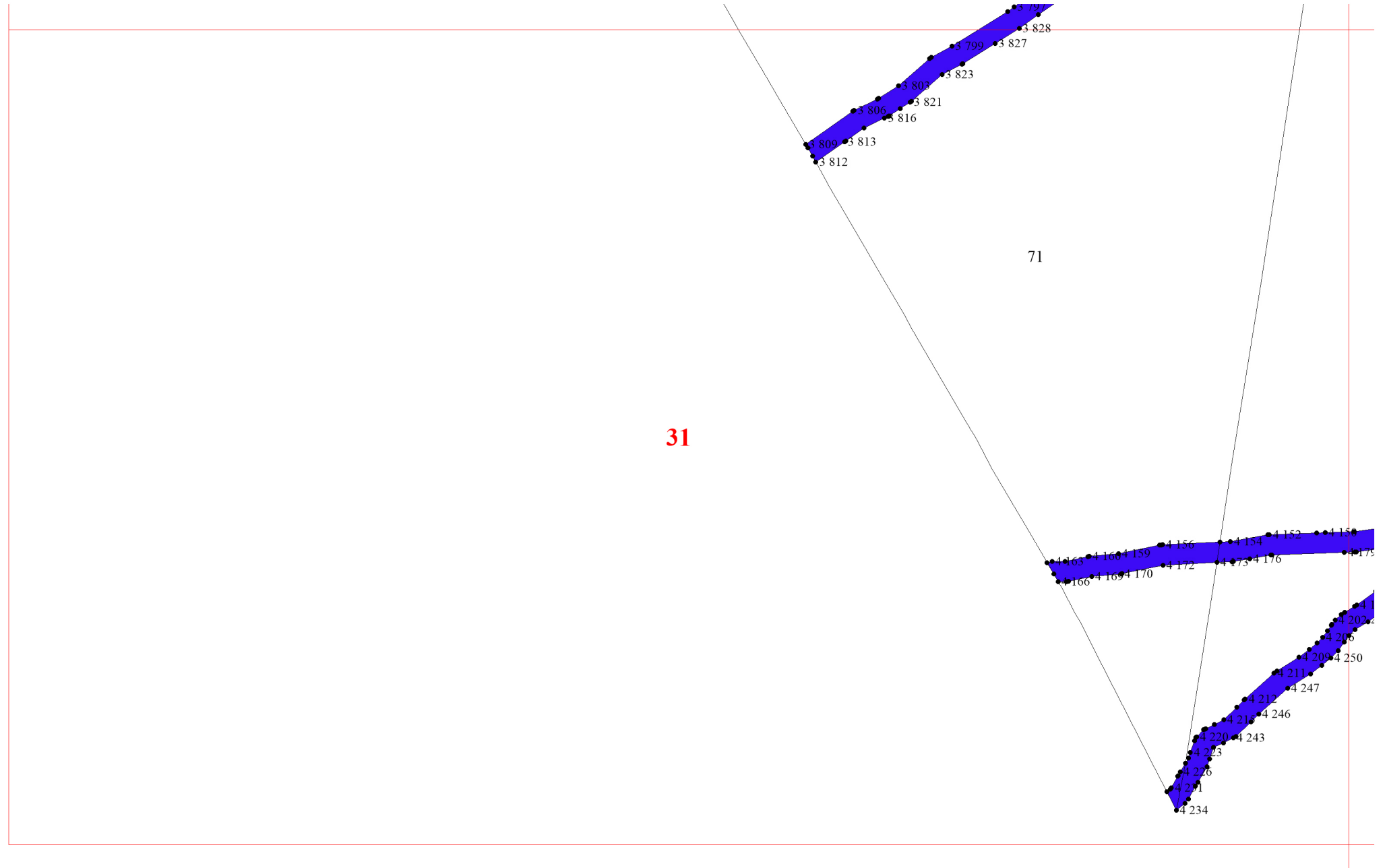


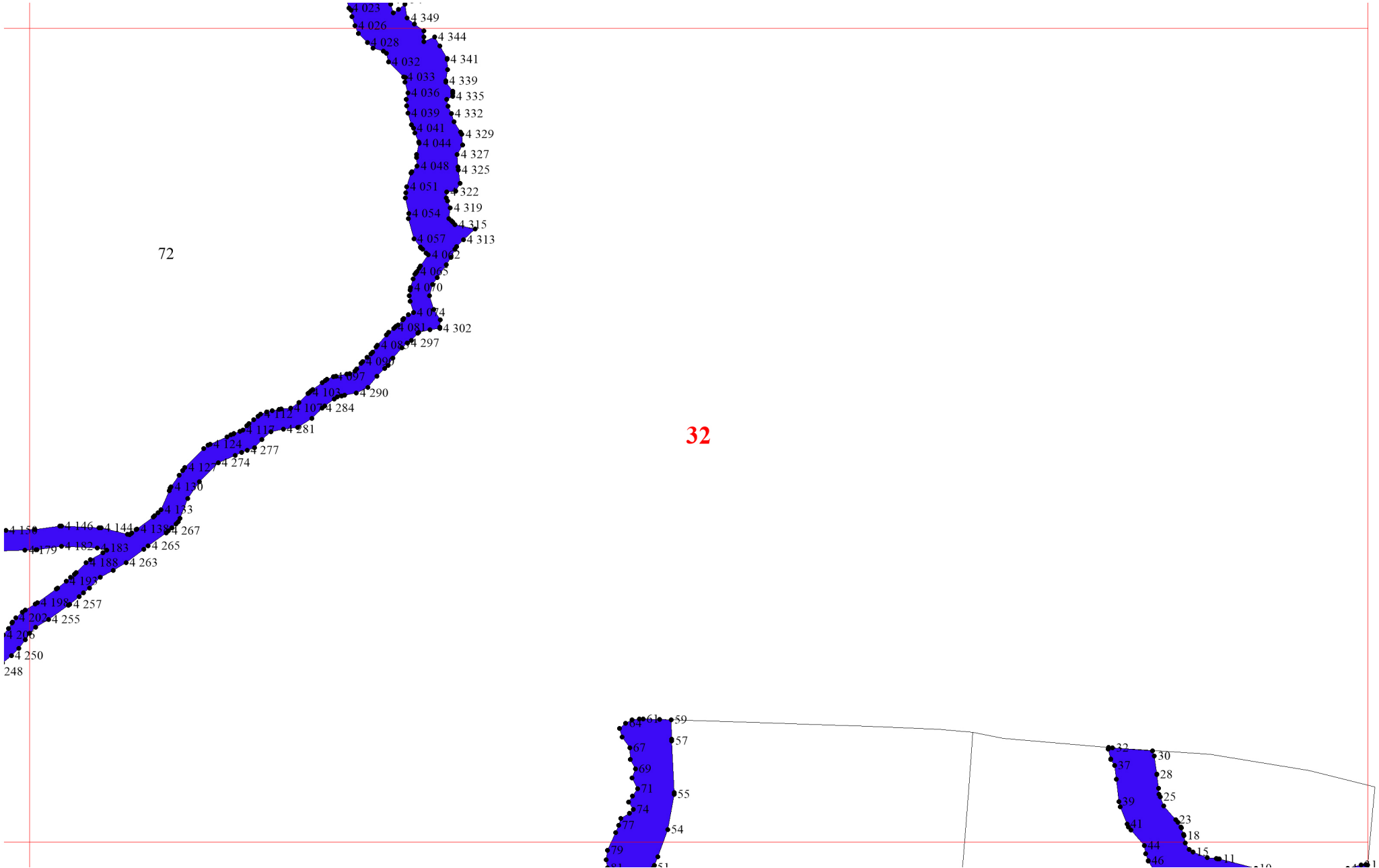


30



30





32

