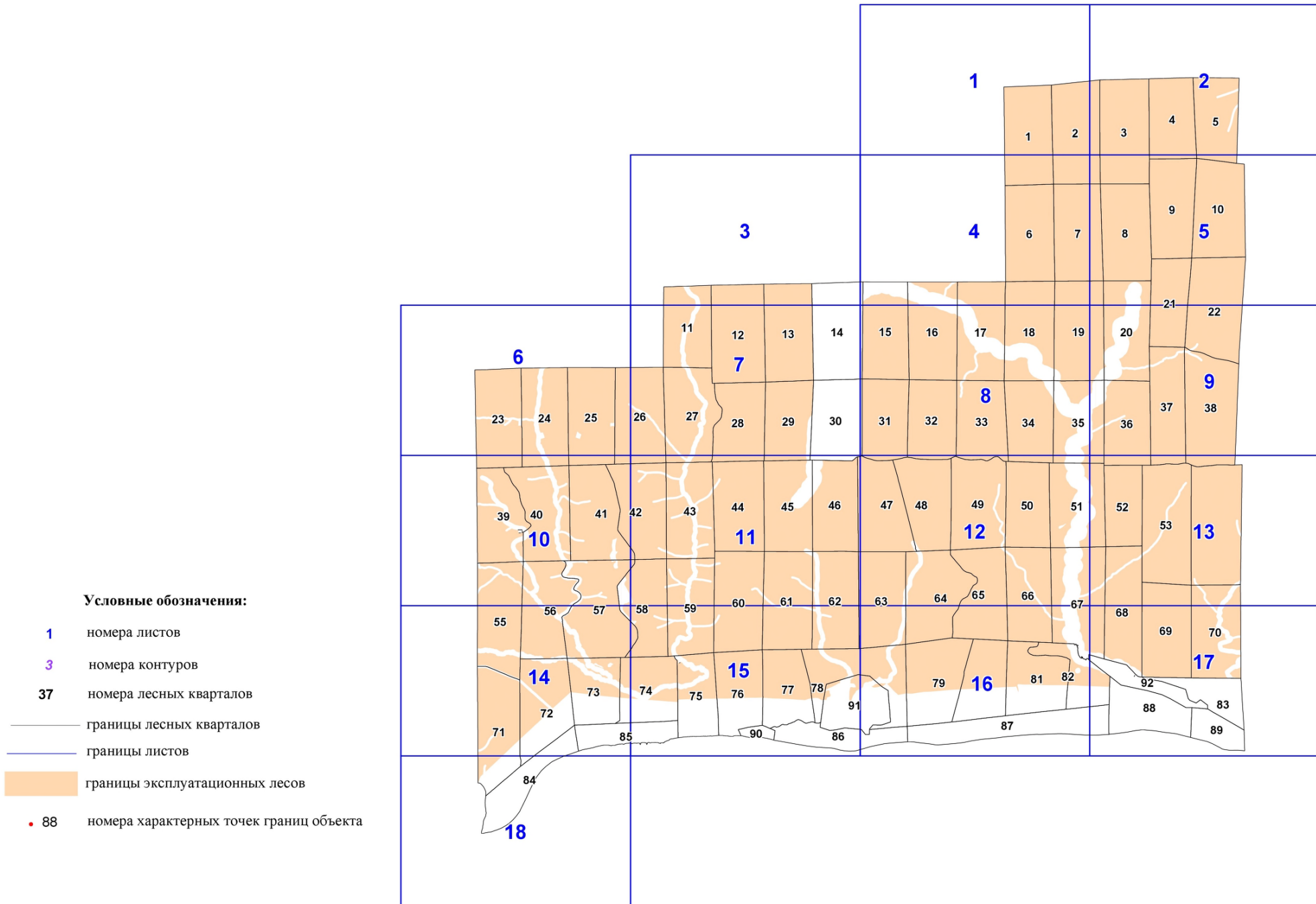
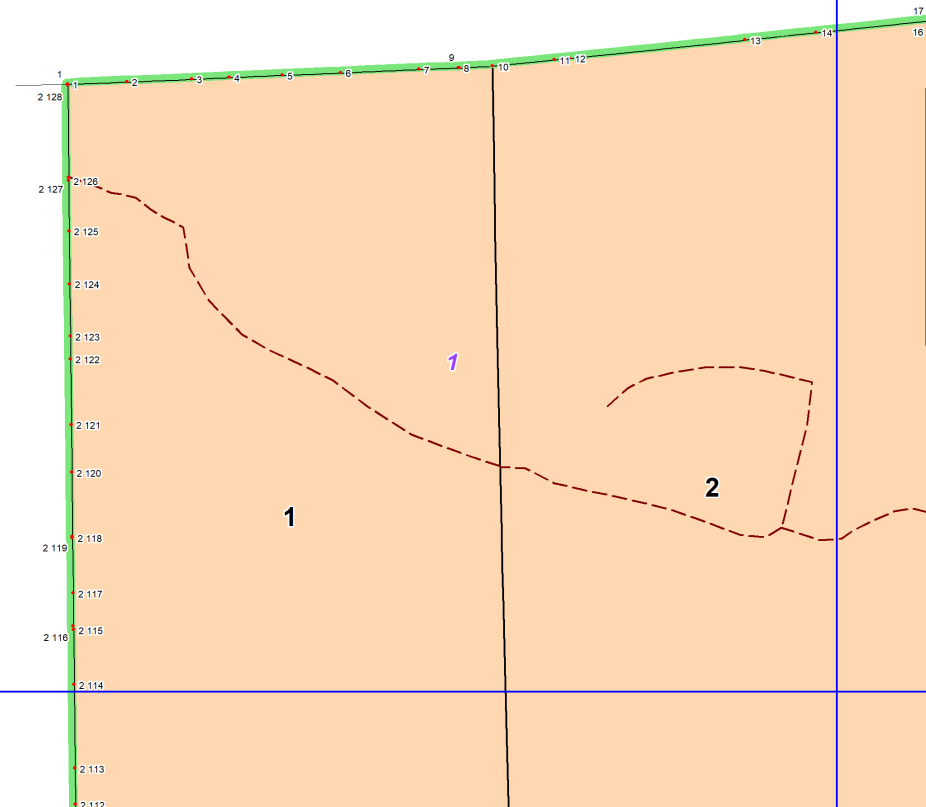


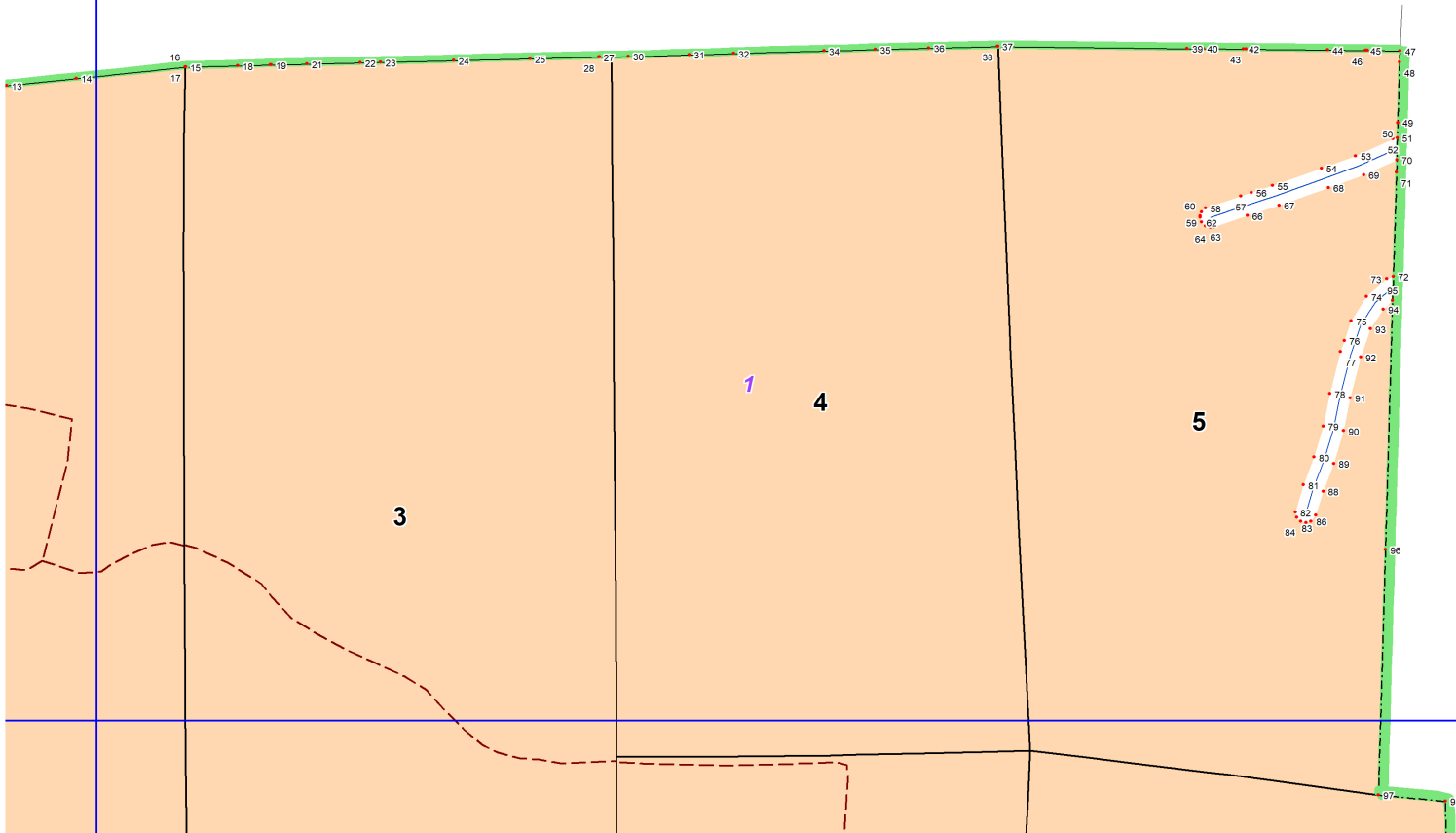
Графическое описание местоположения границ земель, на которых
располагаются эксплуатационные леса, на территории
Шиверского участкового лесничества Гремучинского лесничества Красноярского края

Приложение № 52 к приказу Рослесхоза
от 28.05.2024 № 368



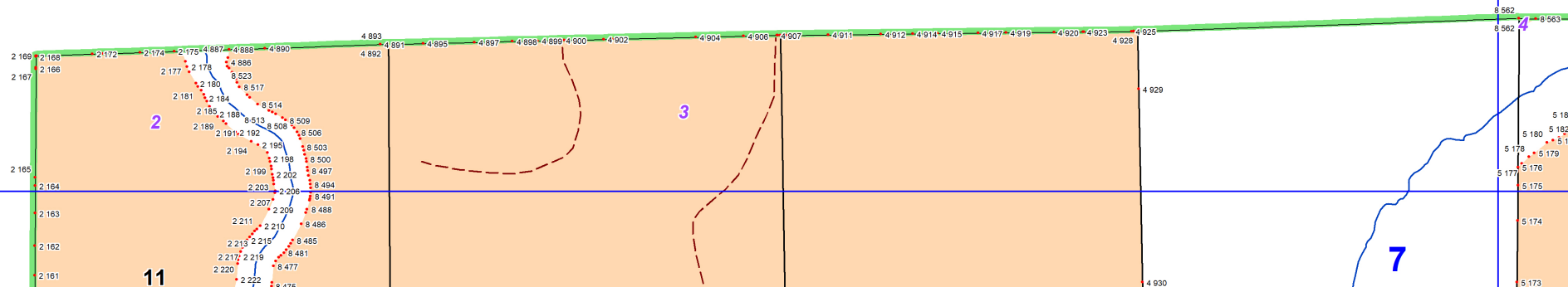
1





Хребтовское лесничество

3

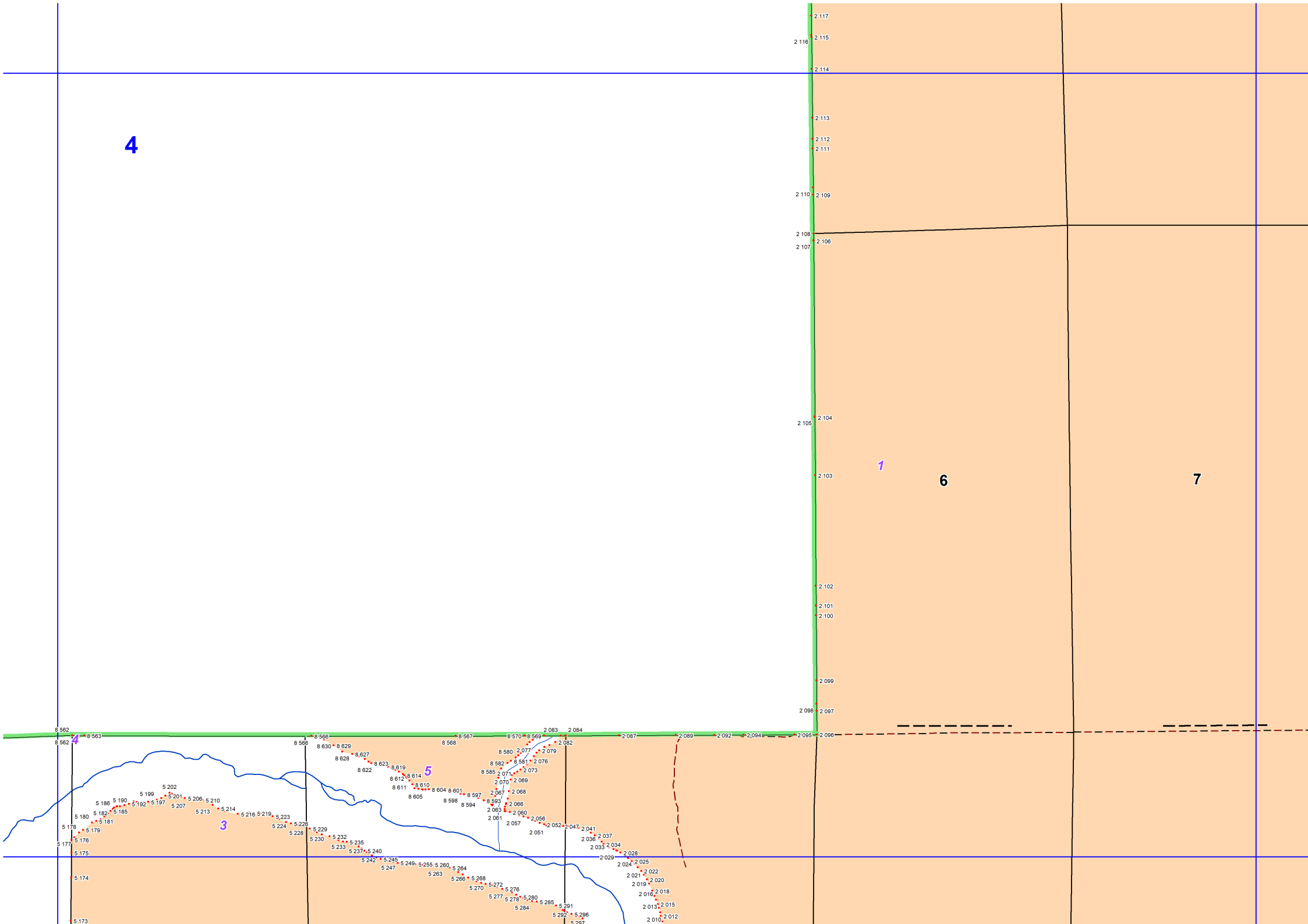


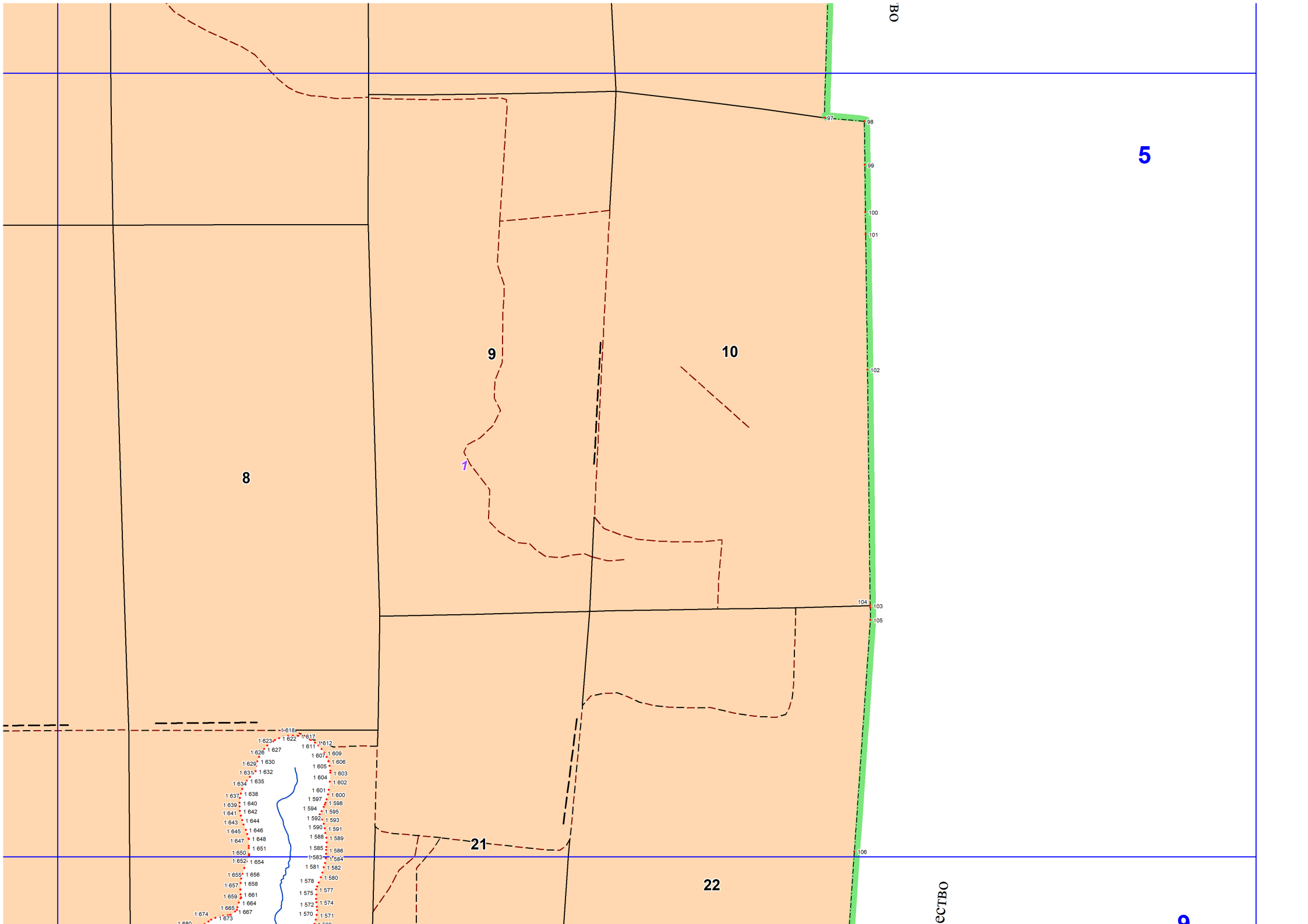
4

1

6

7





8

9

10

7

21

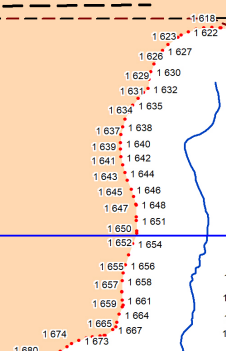
22

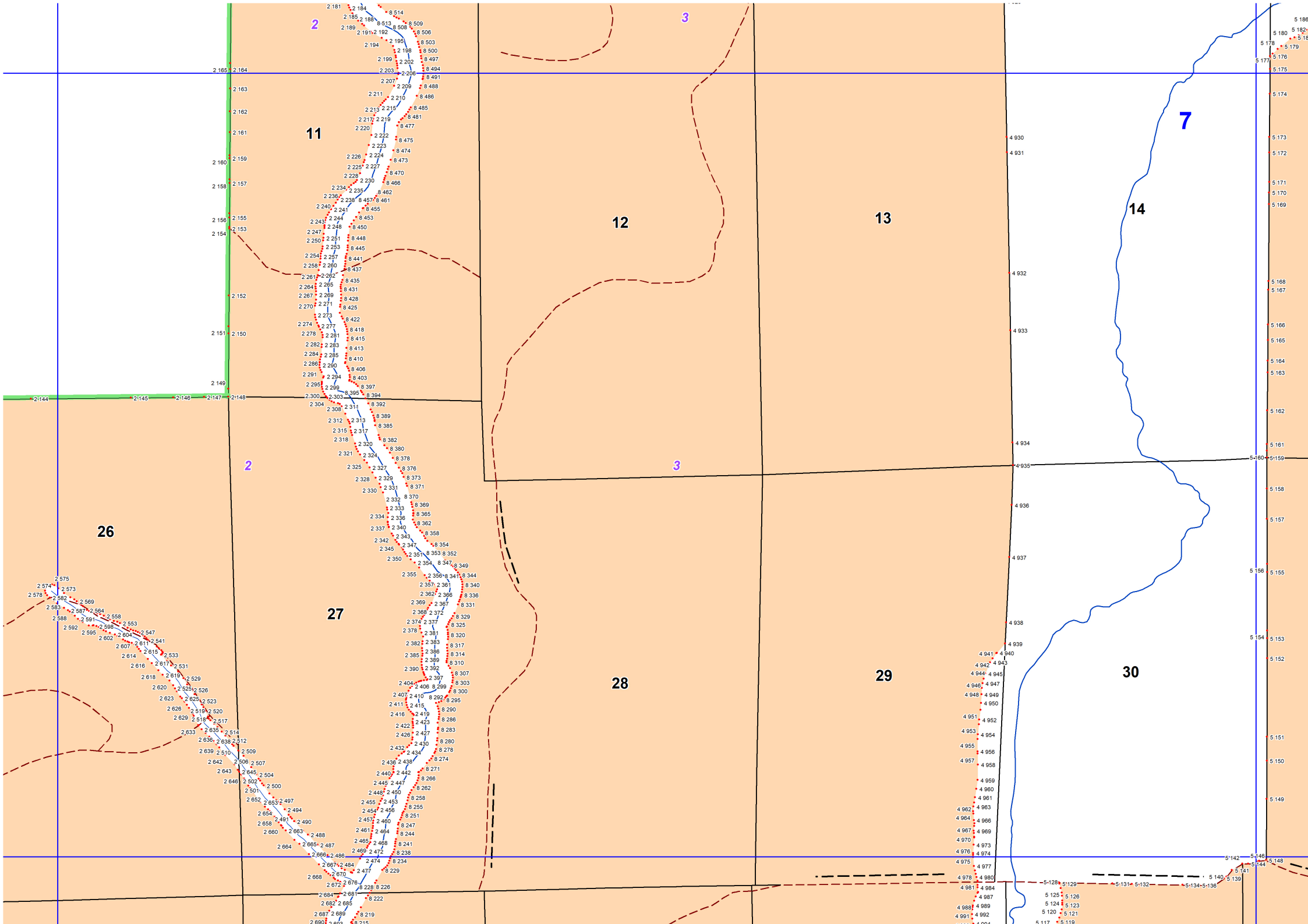
5

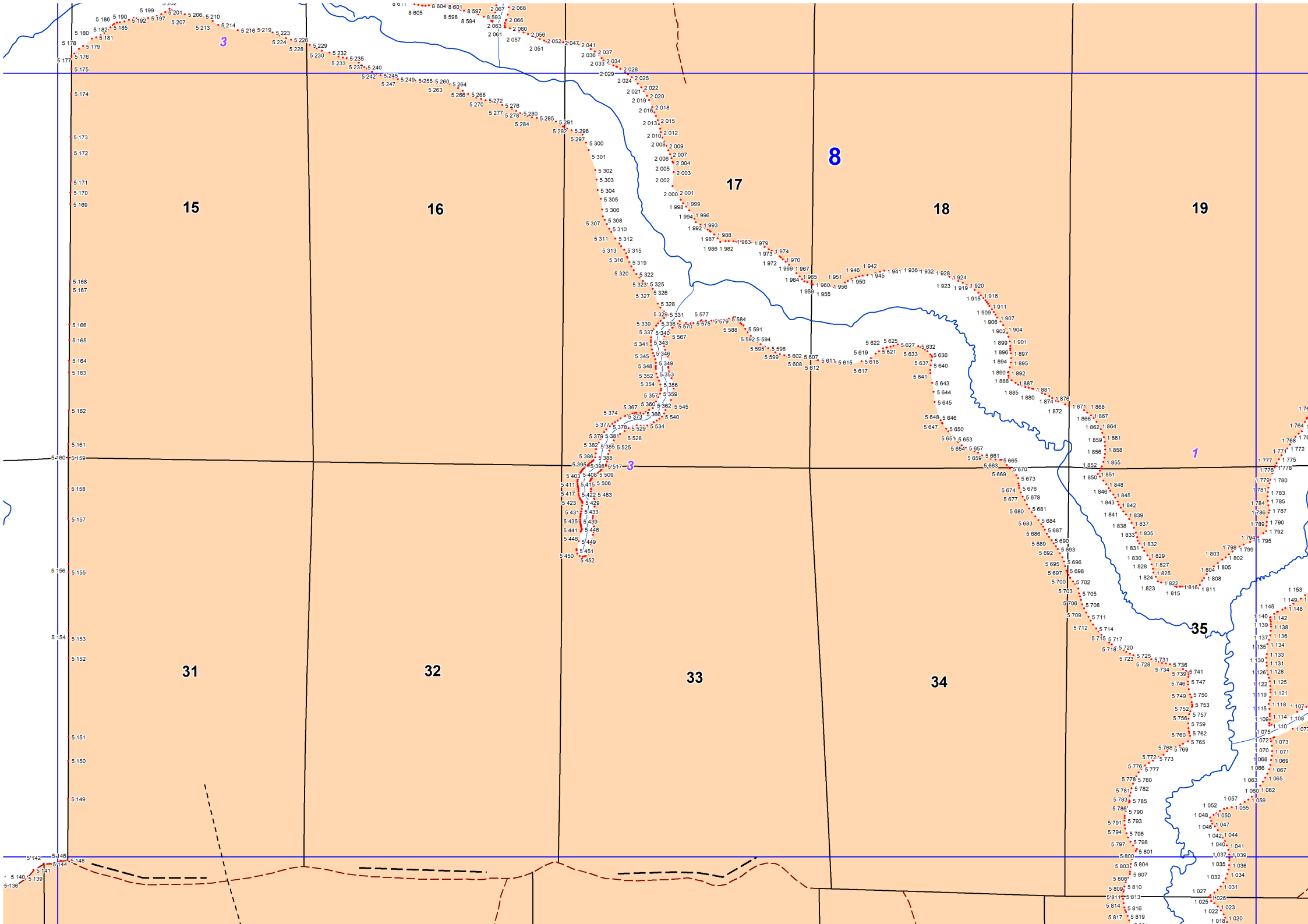
BO

ECTBO

9







10

2

40

41

39

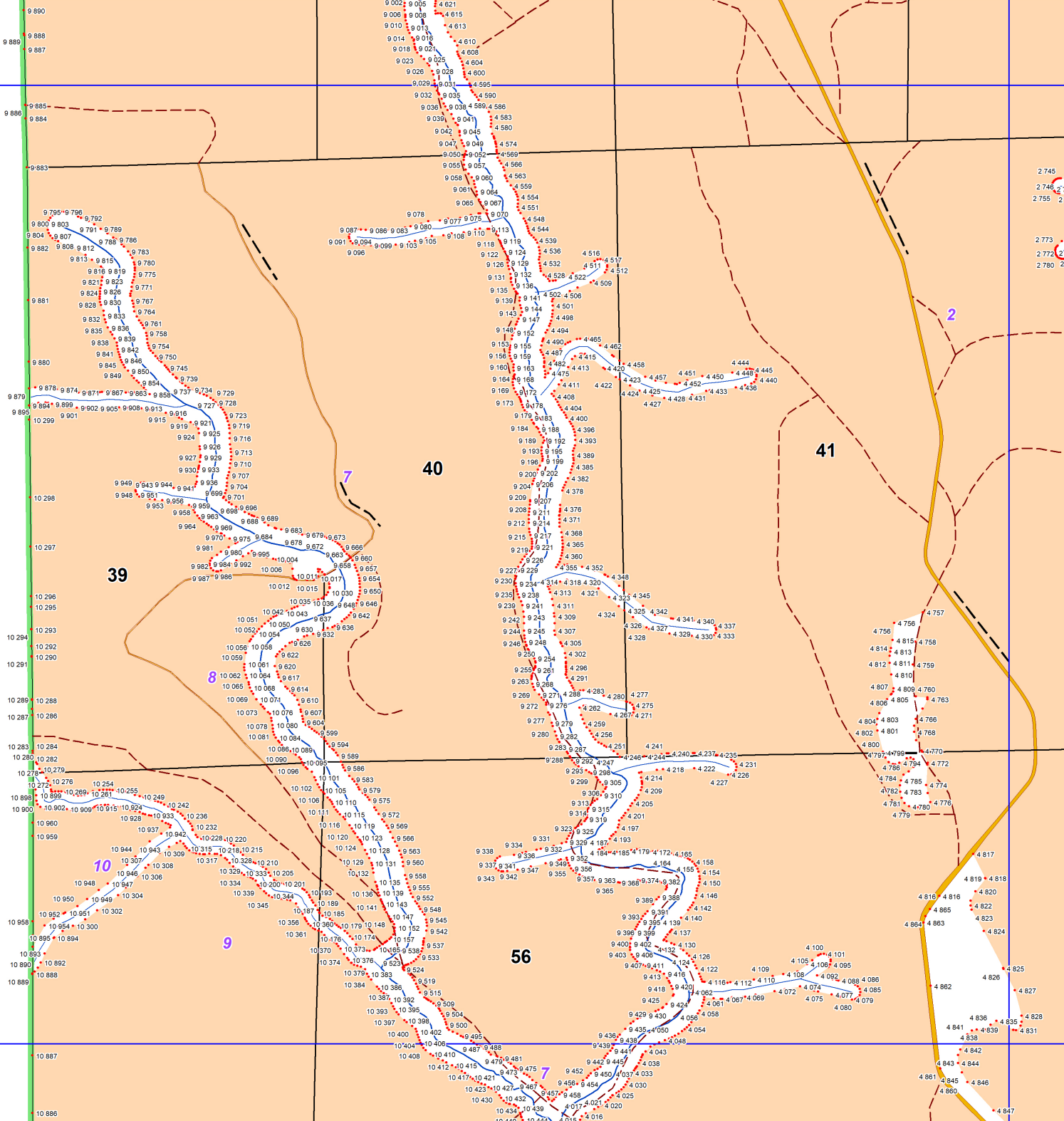
8

56

9

7

11

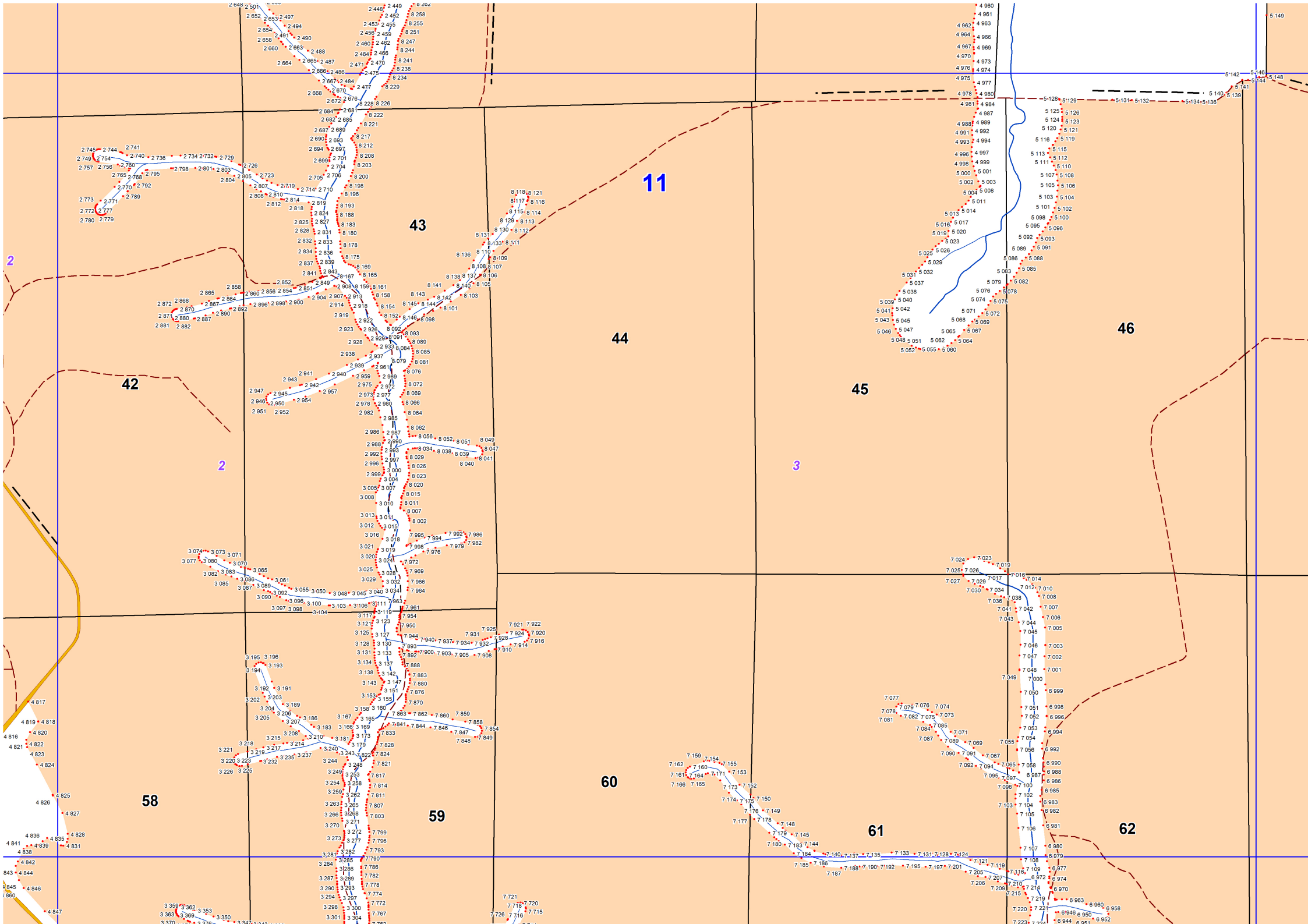


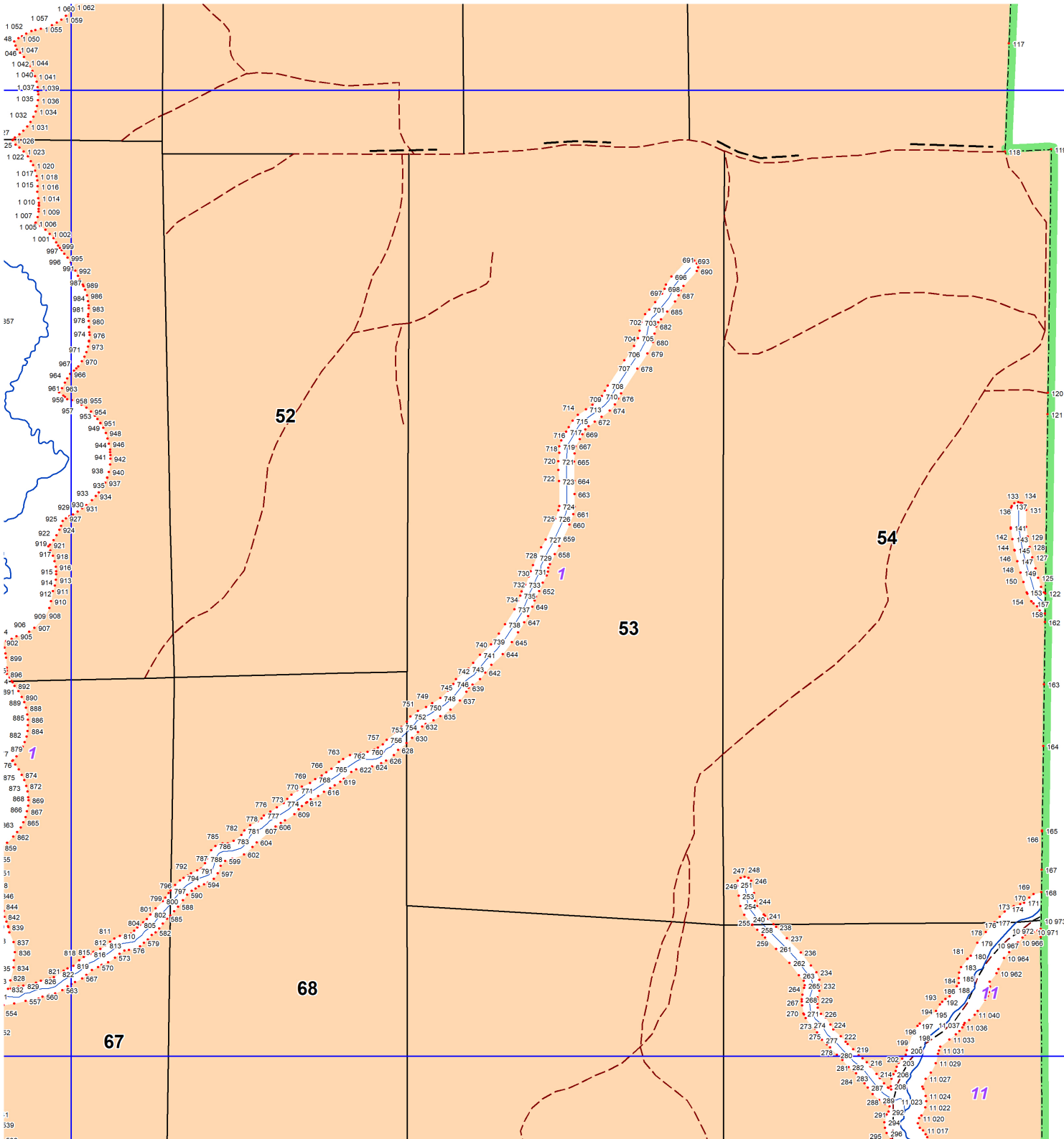
2.745
2.746
2.755

2.773
2.772
2.760

4.757
4.758
4.759
4.810
4.806
4.807
4.804
4.802
4.800
4.776
4.774
4.777

4.817
4.816
4.818
4.820
4.822
4.823
4.824
4.825
4.826
4.827
4.836
4.835
4.838
4.843
4.844
4.845
4.846
4.847





13

52

54

53

68

67

1
339
522

11

11

11

11

11

11

11

11

11

11

11

11

14

55

57

9

2

12

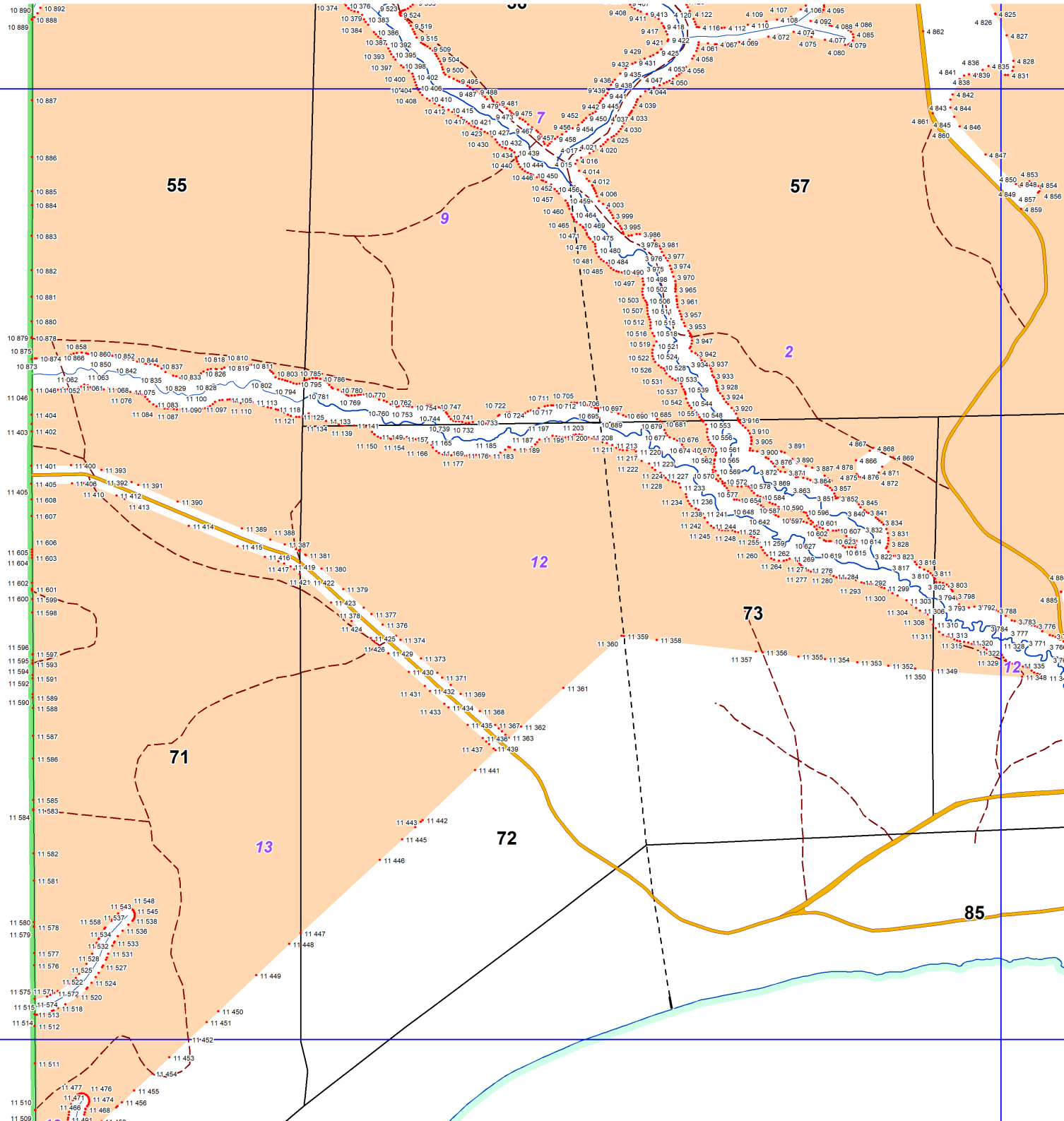
73

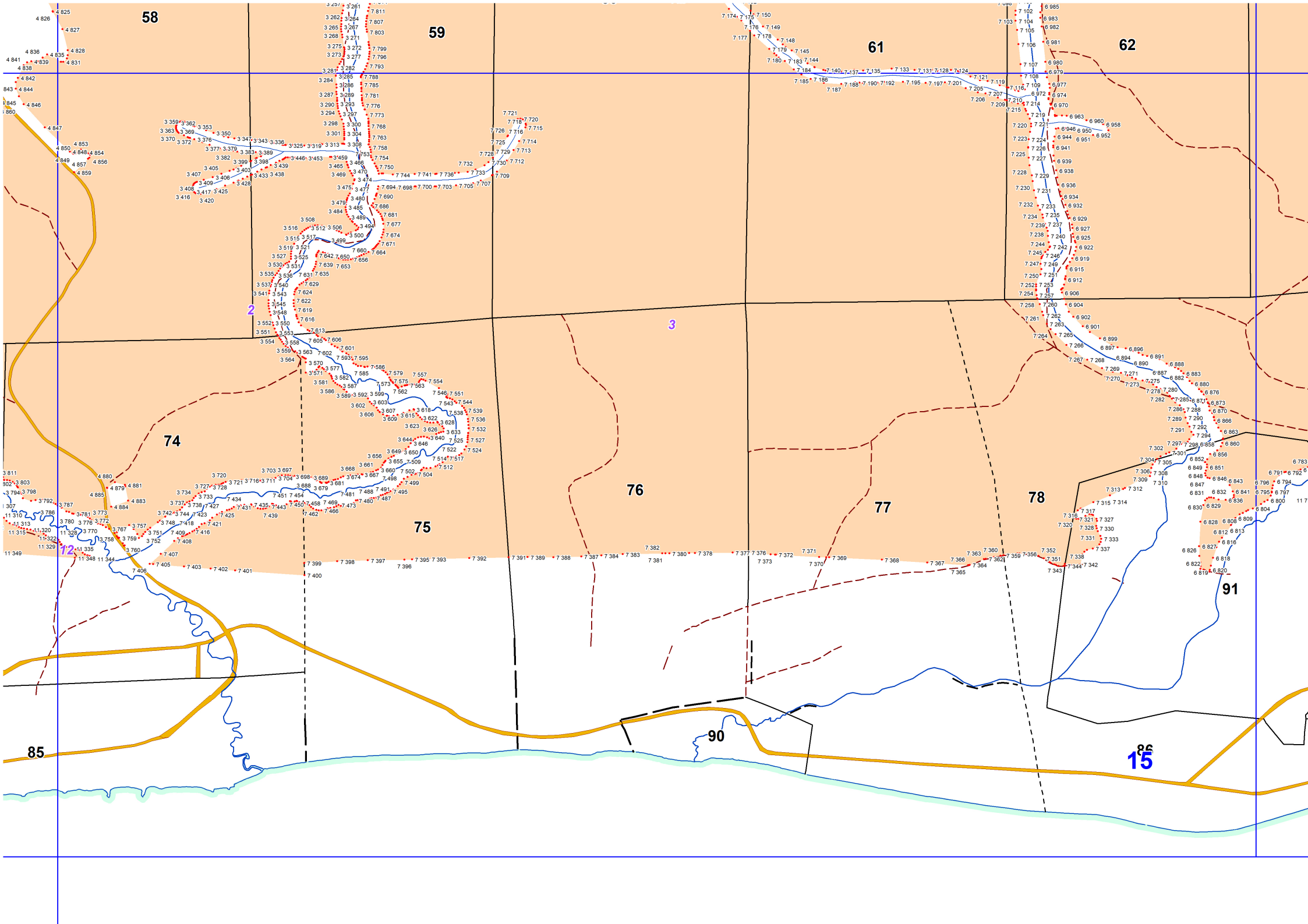
71

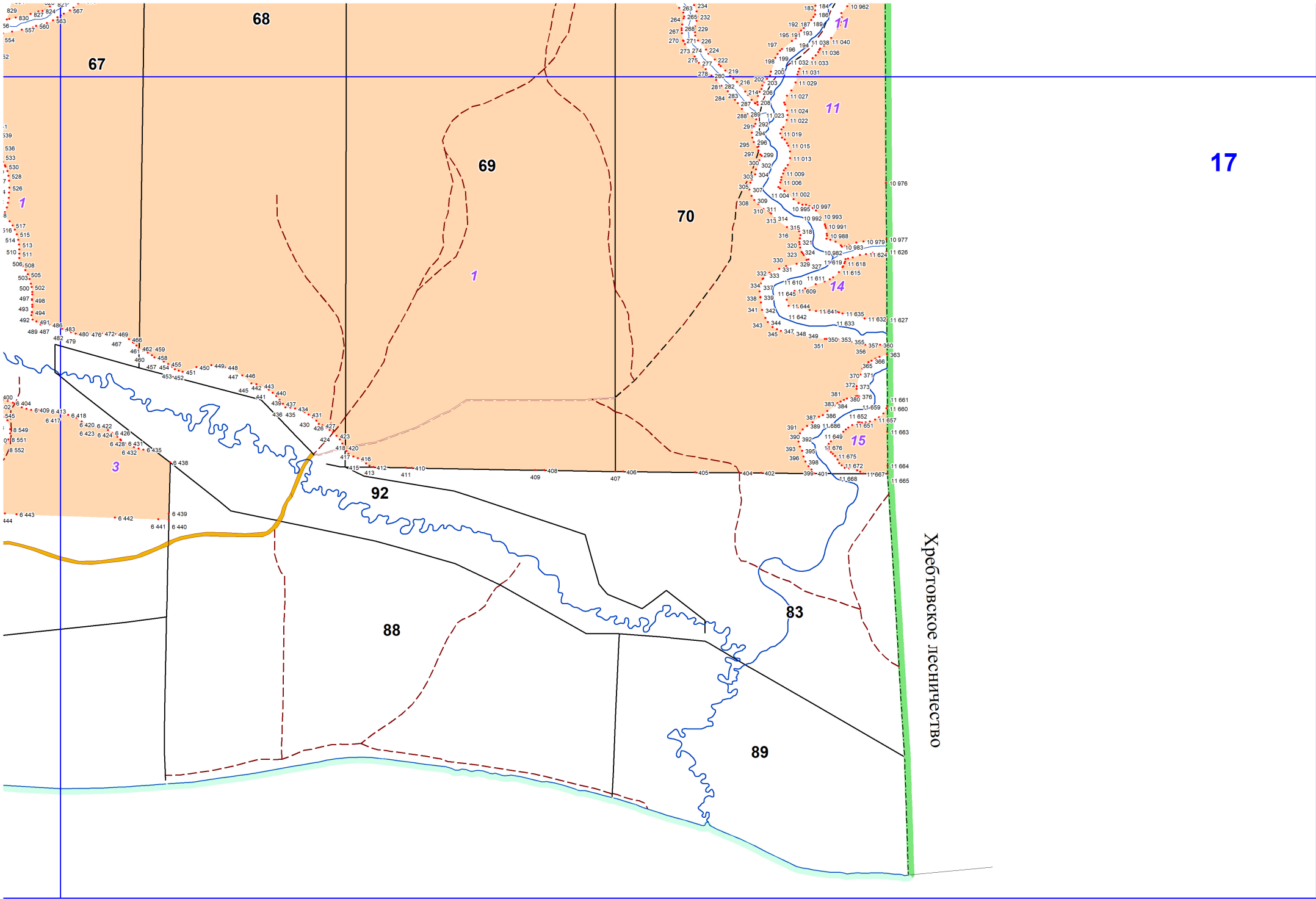
72

13

85



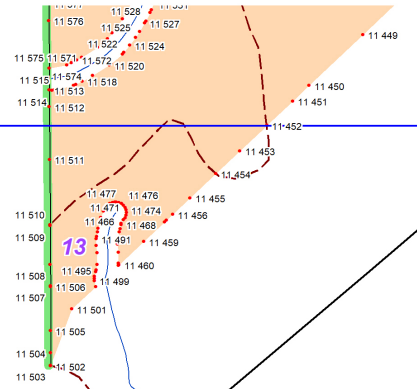




17

Хребтовское лесничество

18



13

84