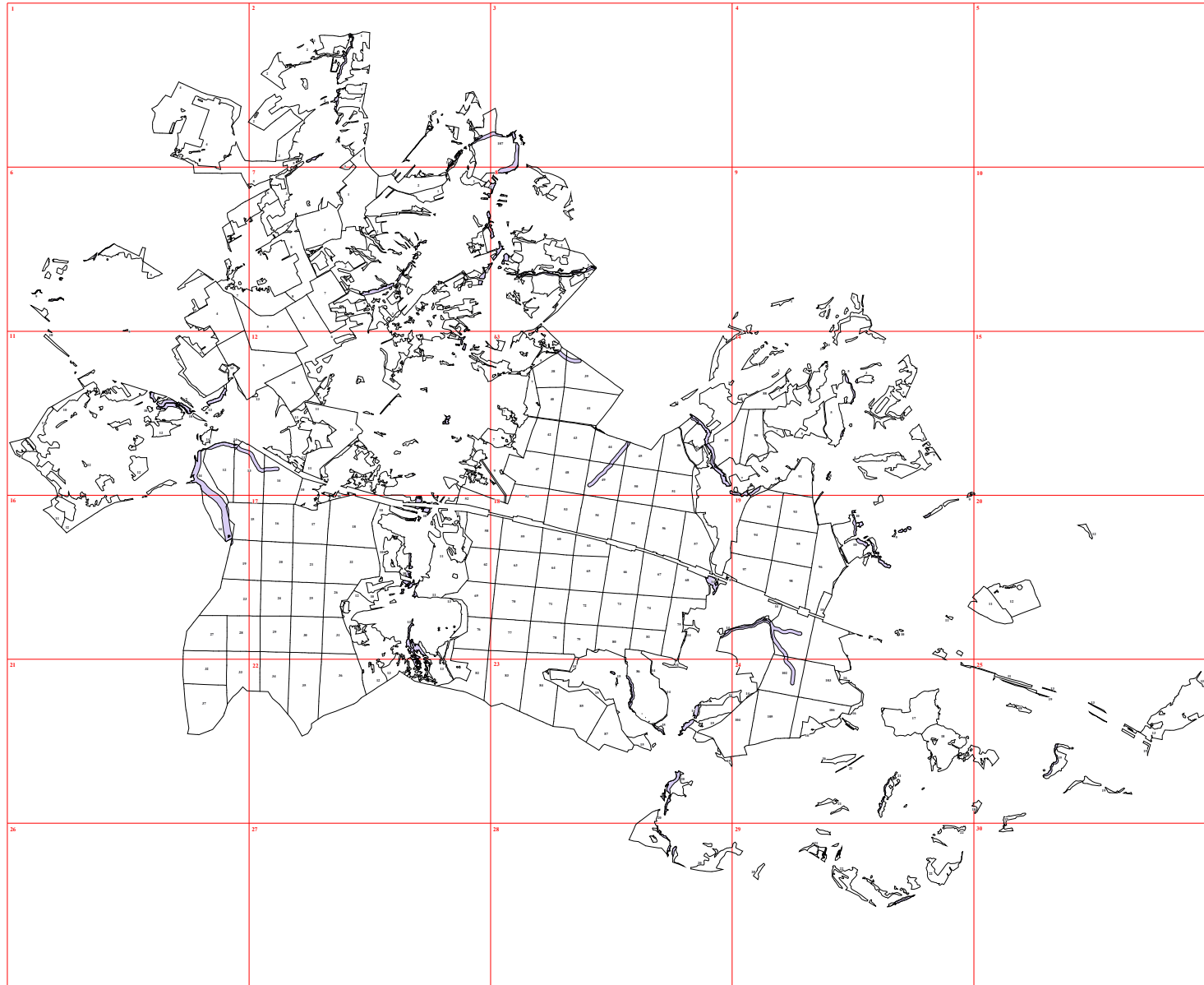
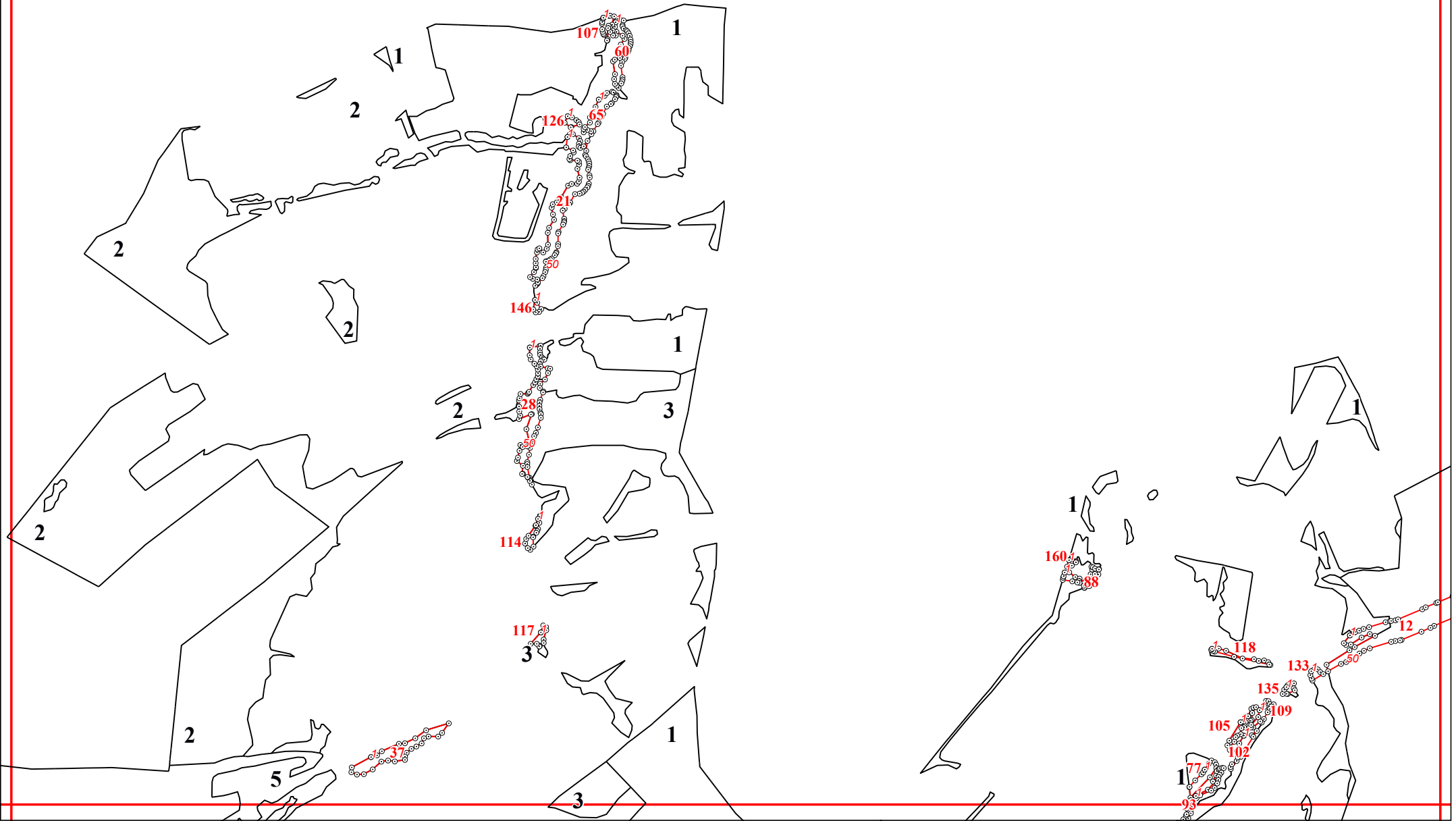
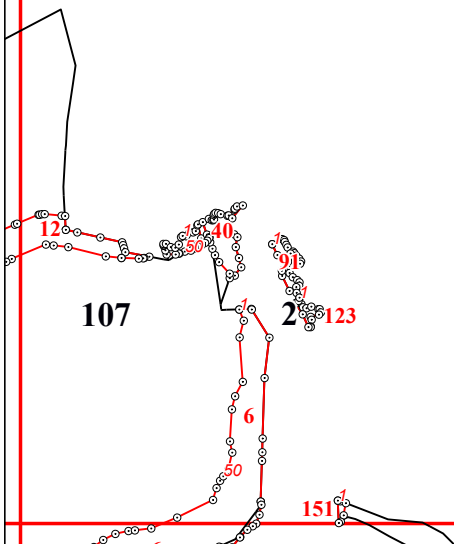


**Графическое описание местоположения границ земель, на которых располагаются леса,
расположенные в водоохранных зонах, на территории Дабужского участкового
лесничества Мещовского лесничества Калужской области**

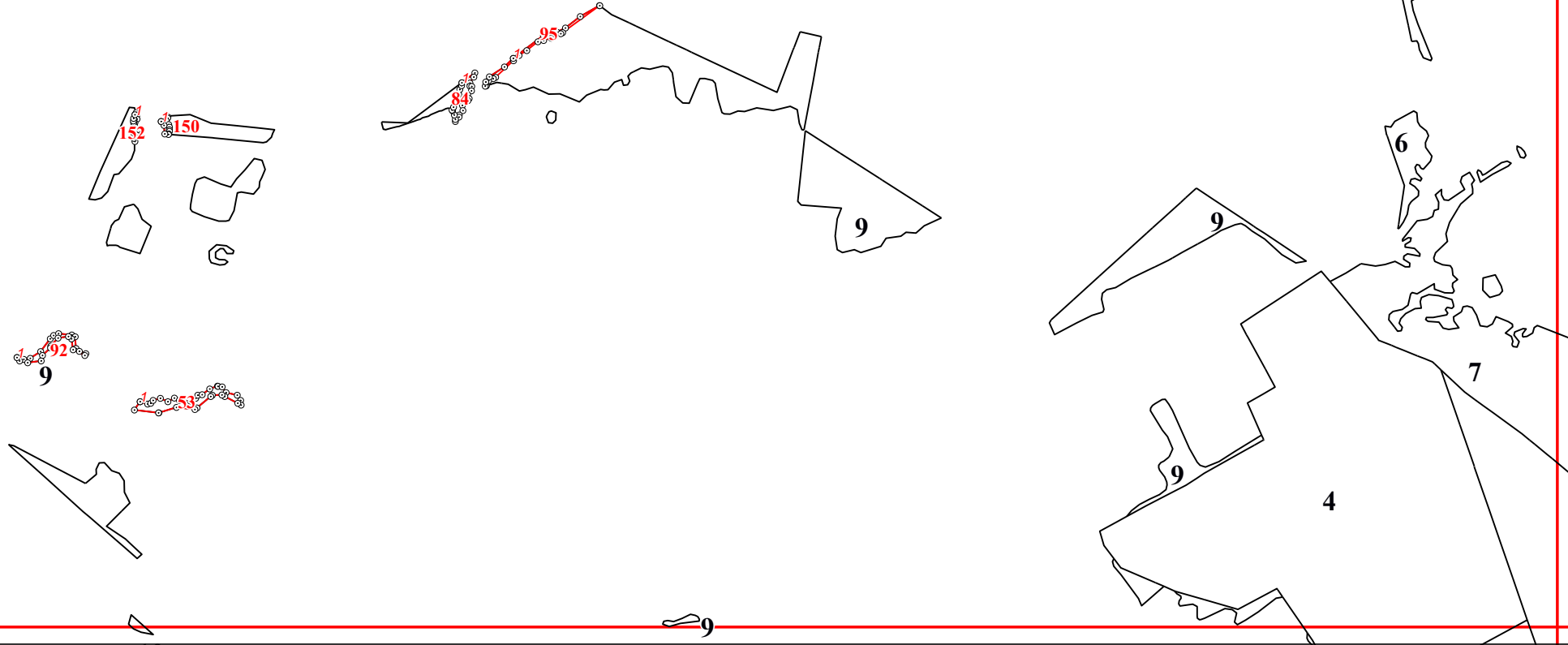


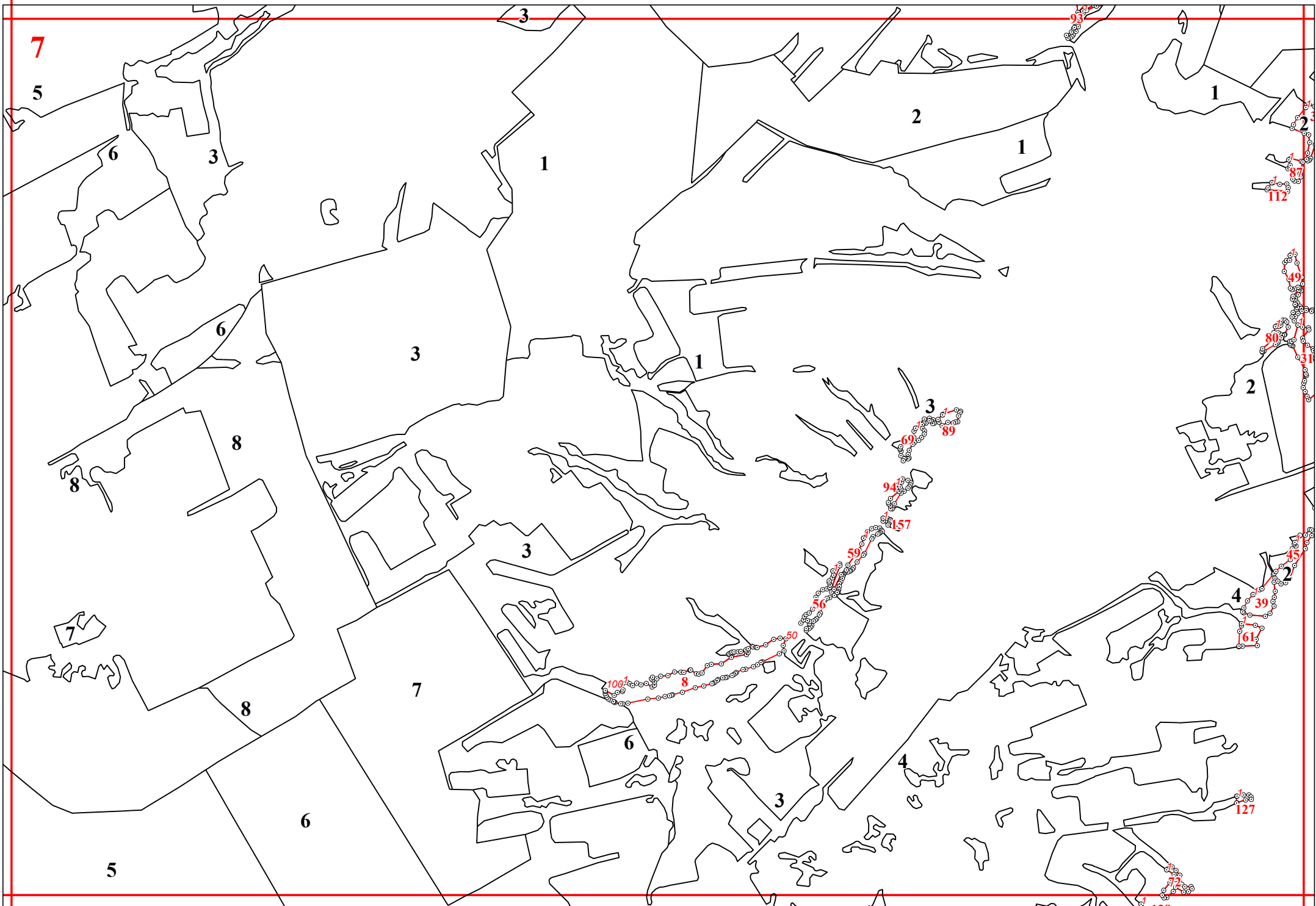


3

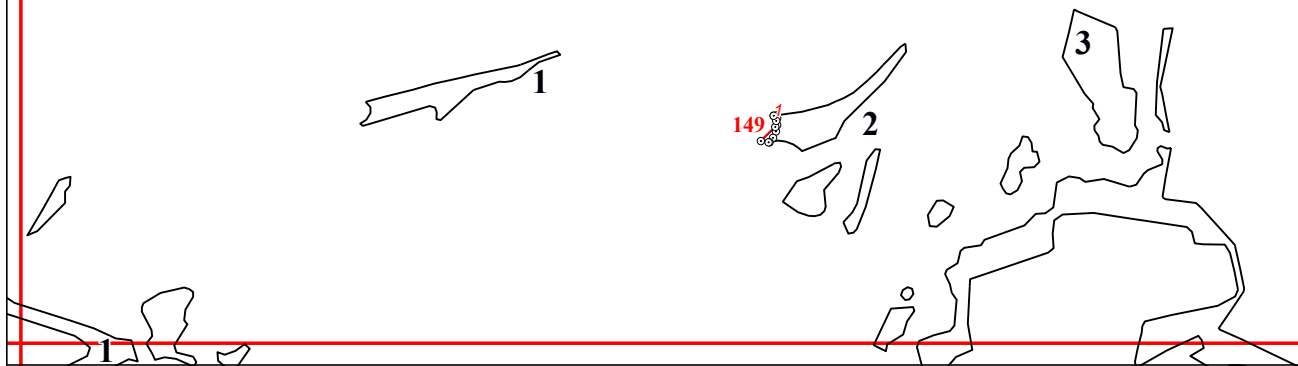


6









11

10

9

9

13

158

36

9

9

10

13

155

50

11

12

120

113

14

12

12

12

13

14

50

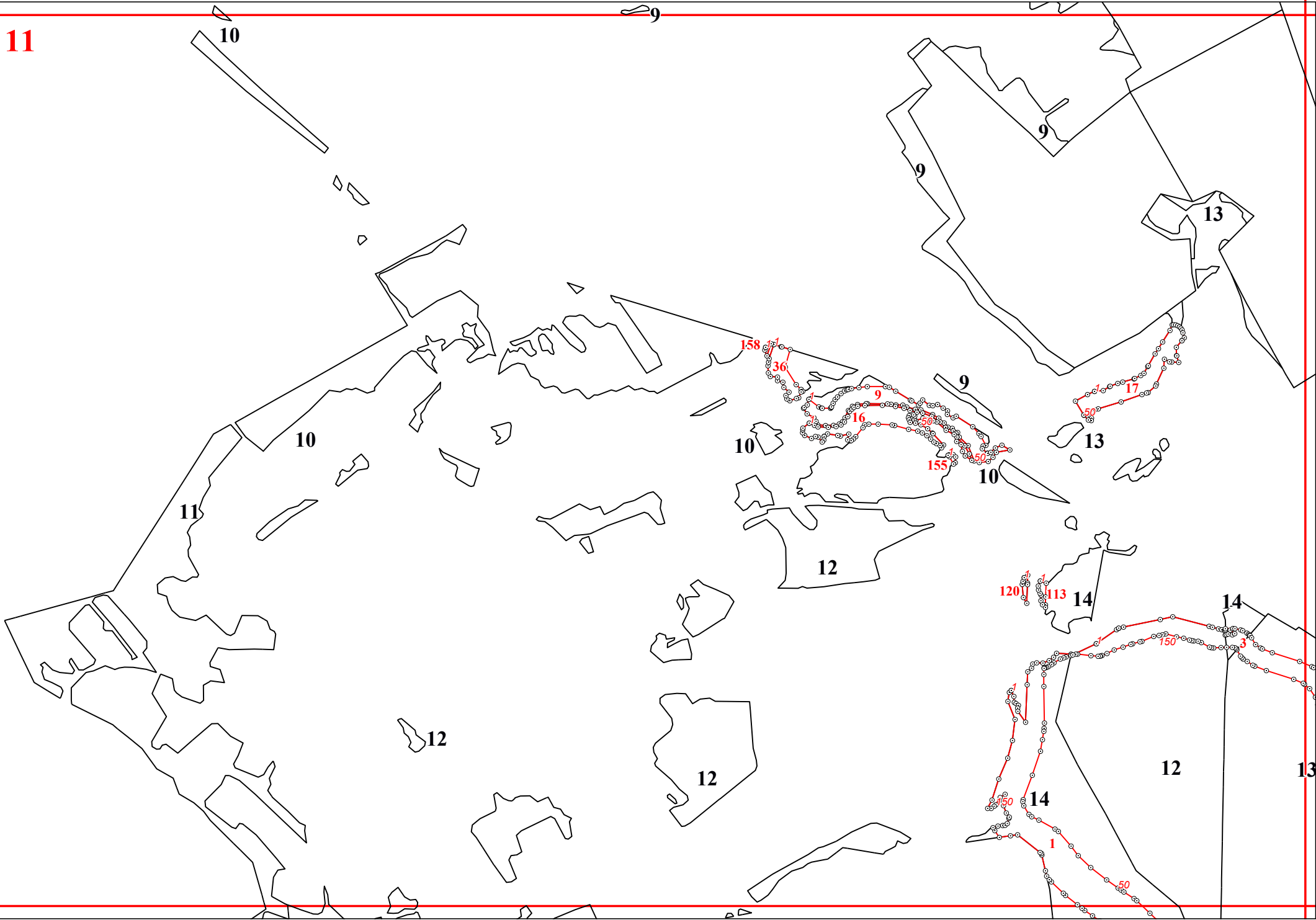
1

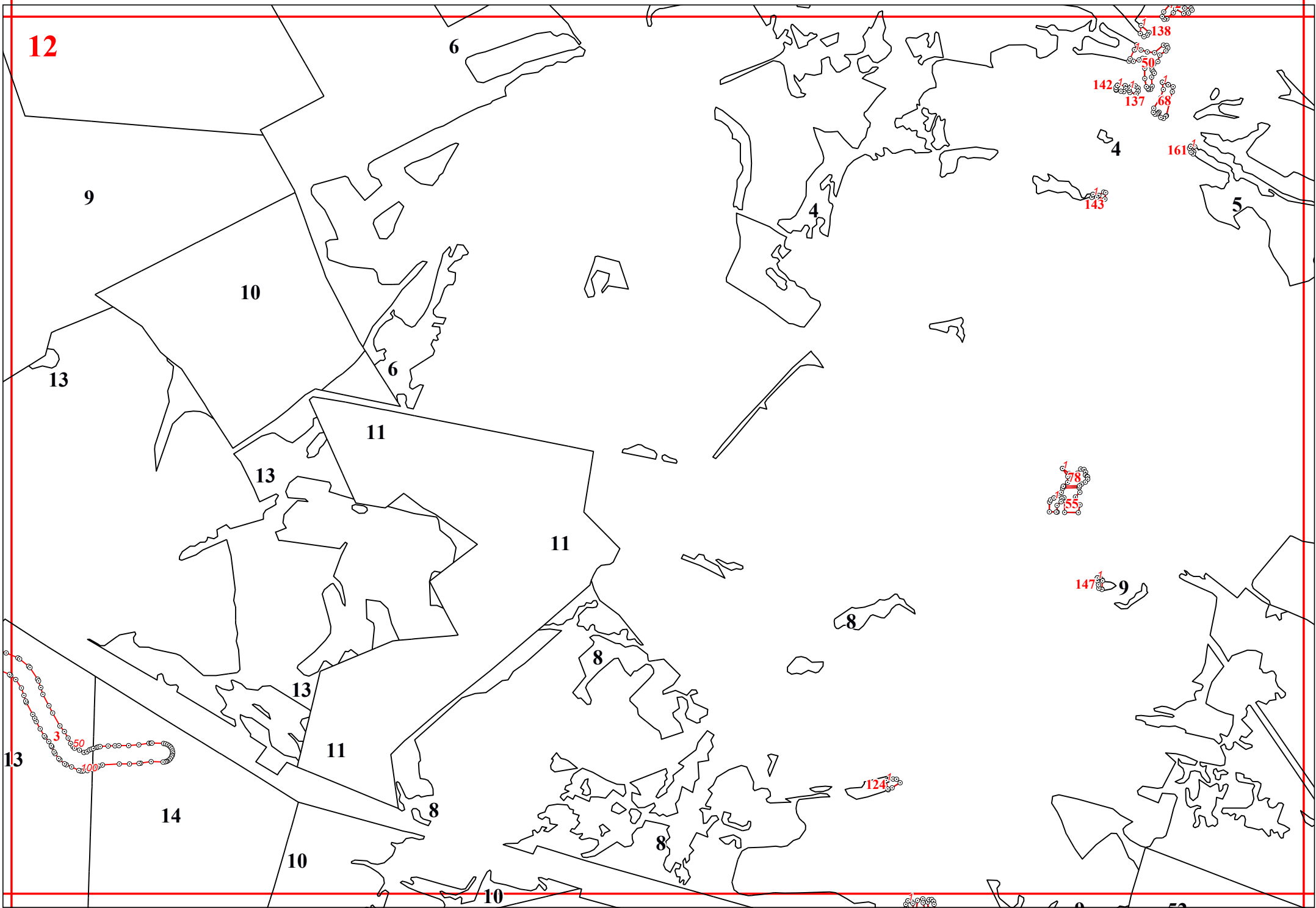
150

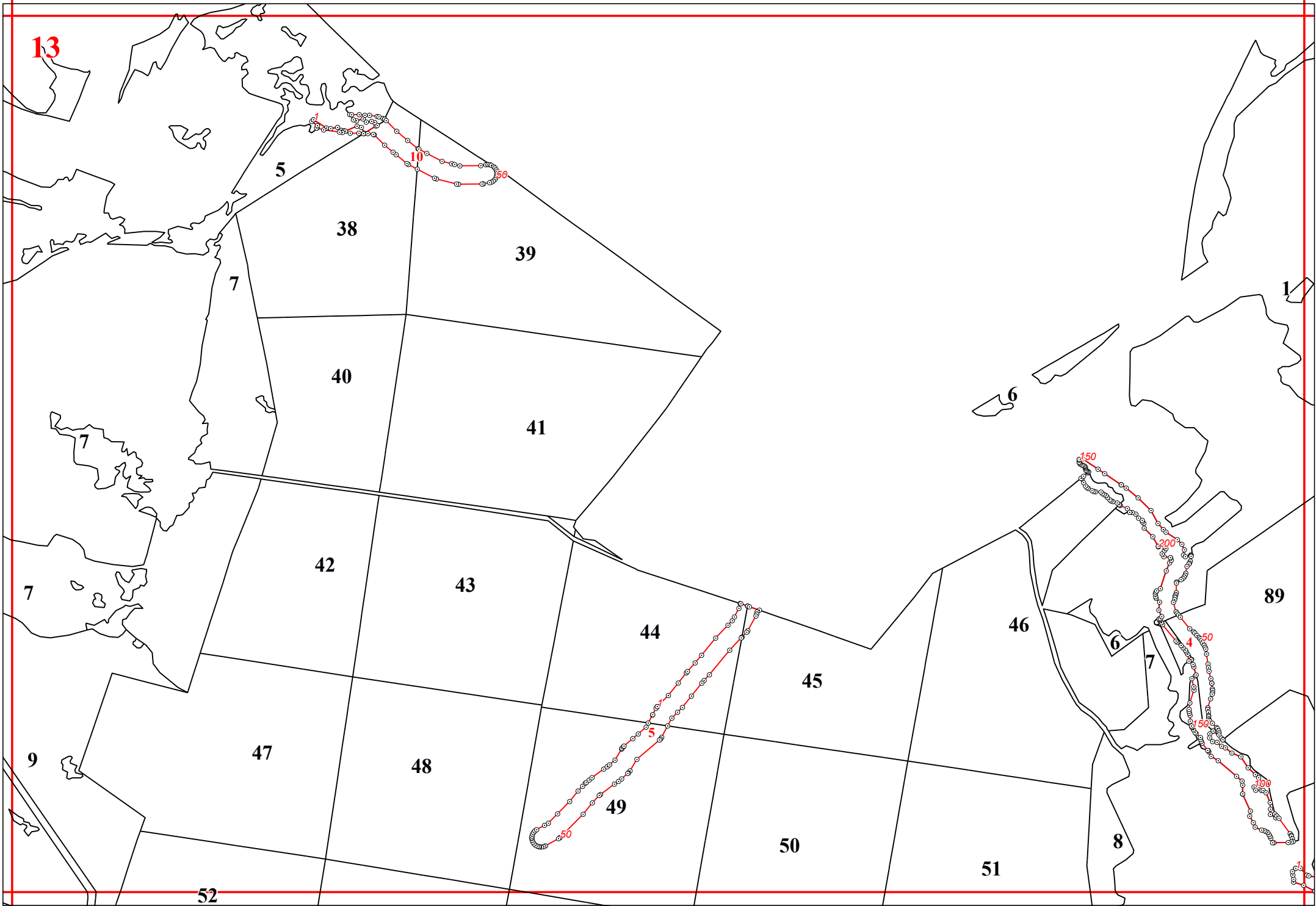
3

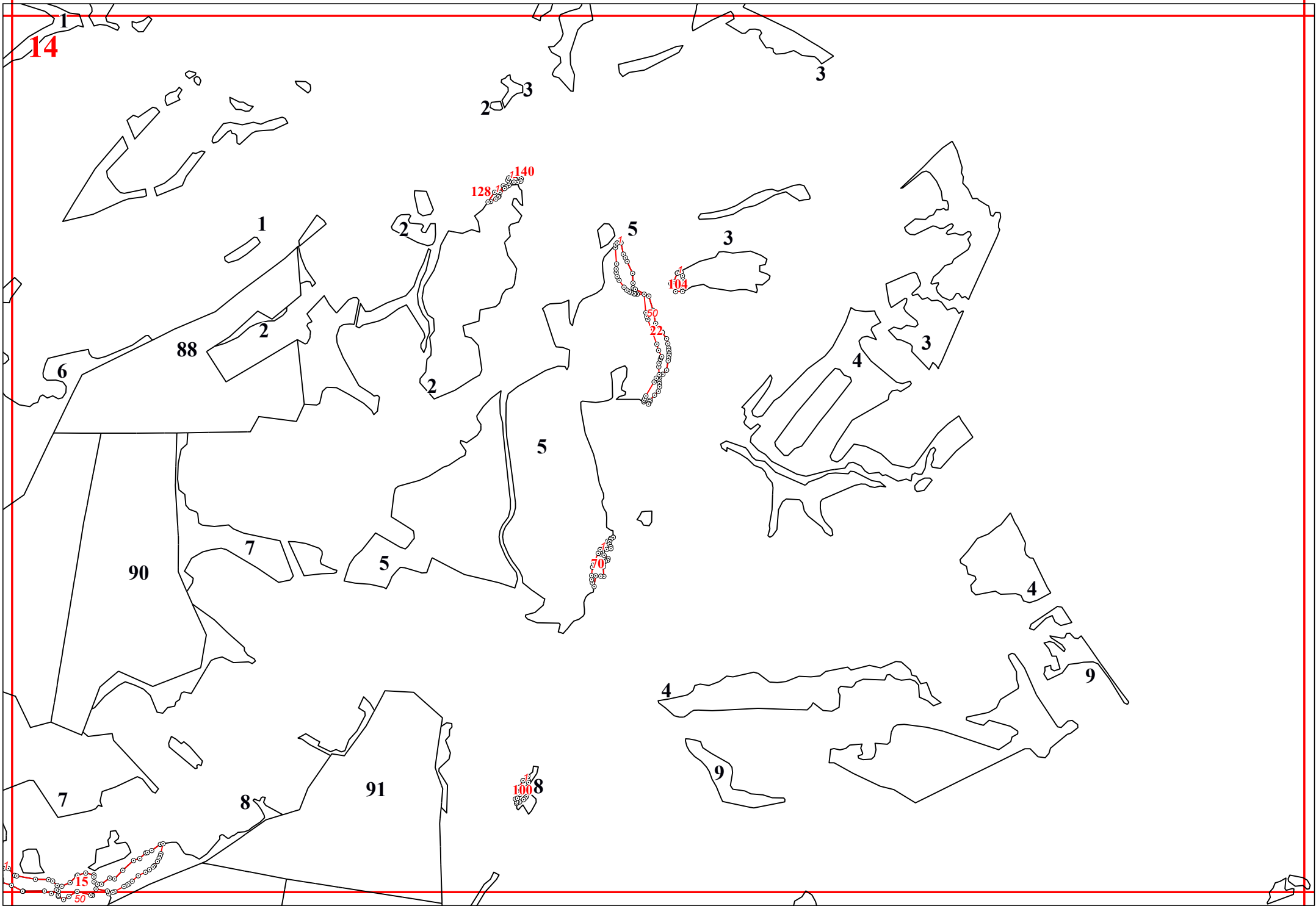
50

1

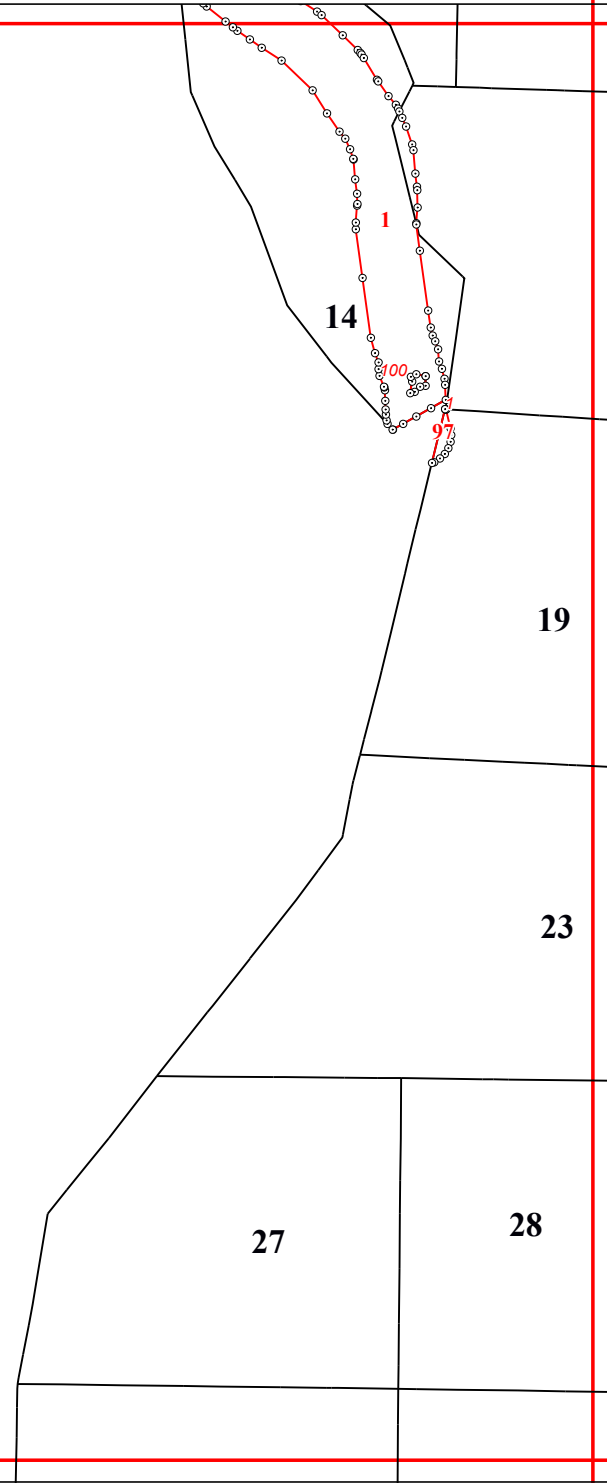
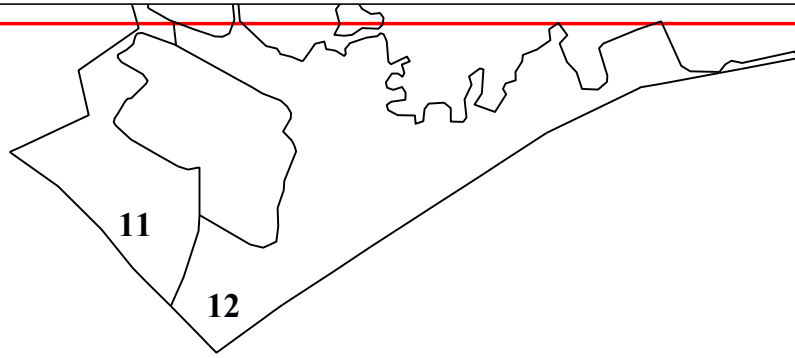


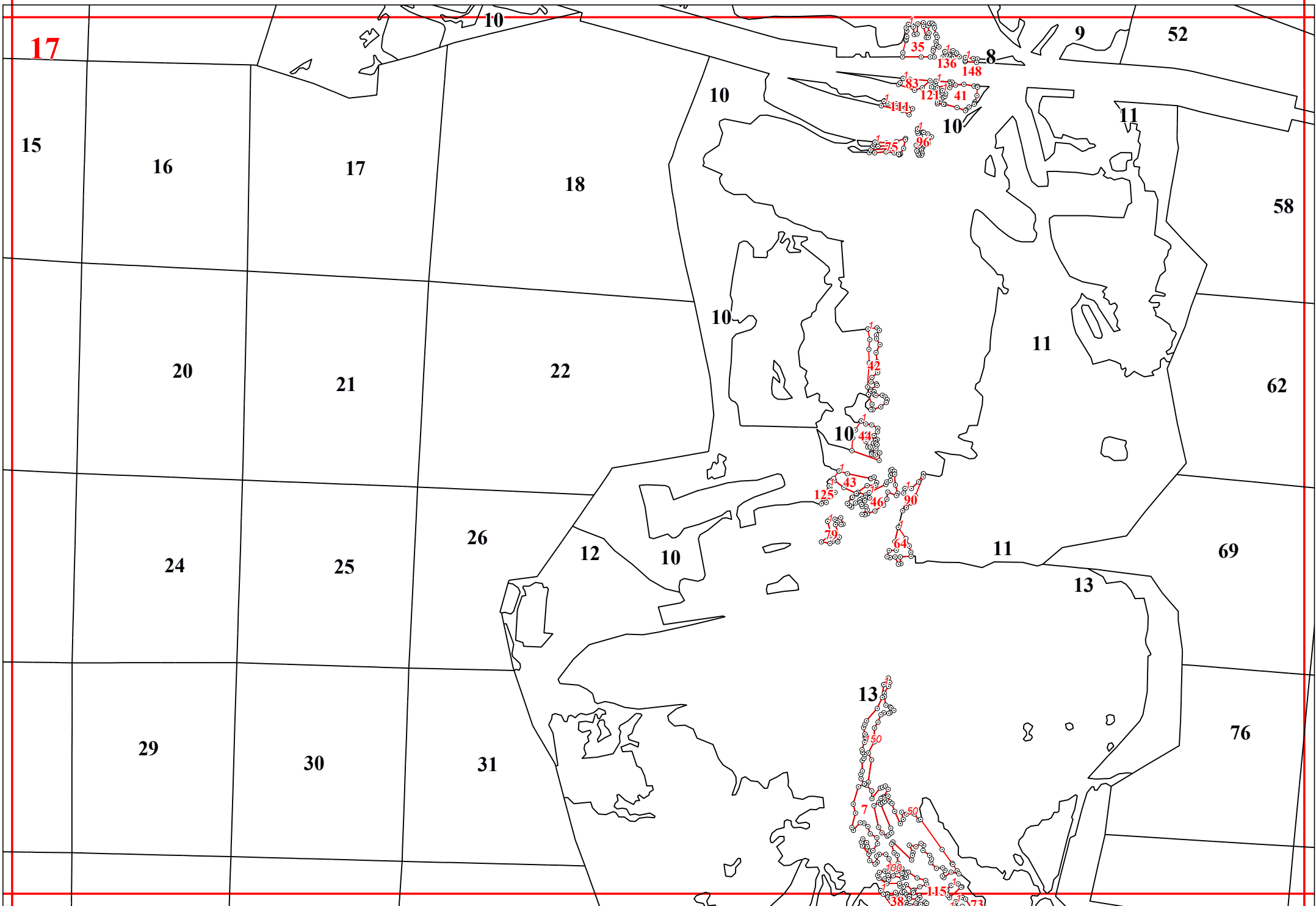


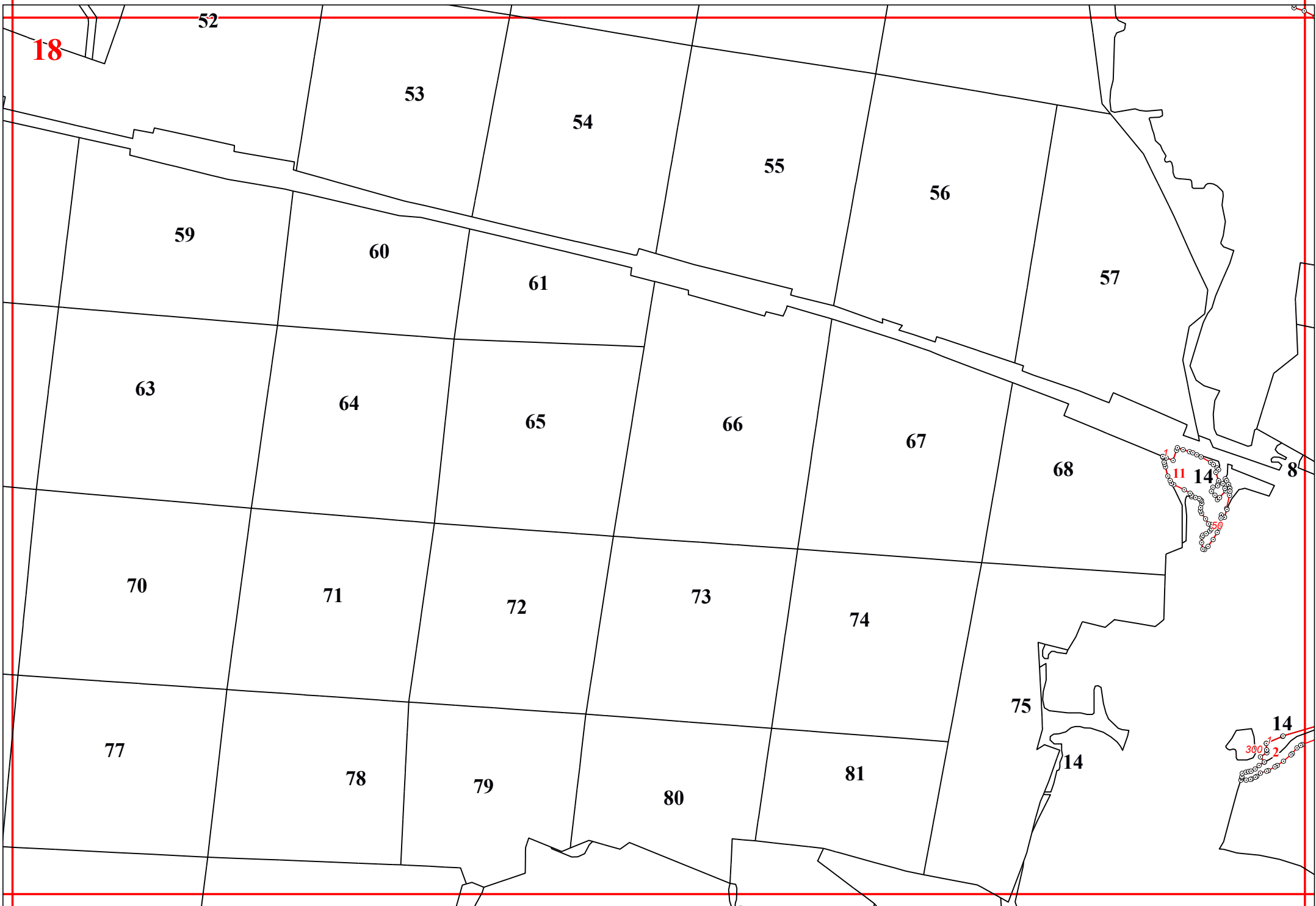


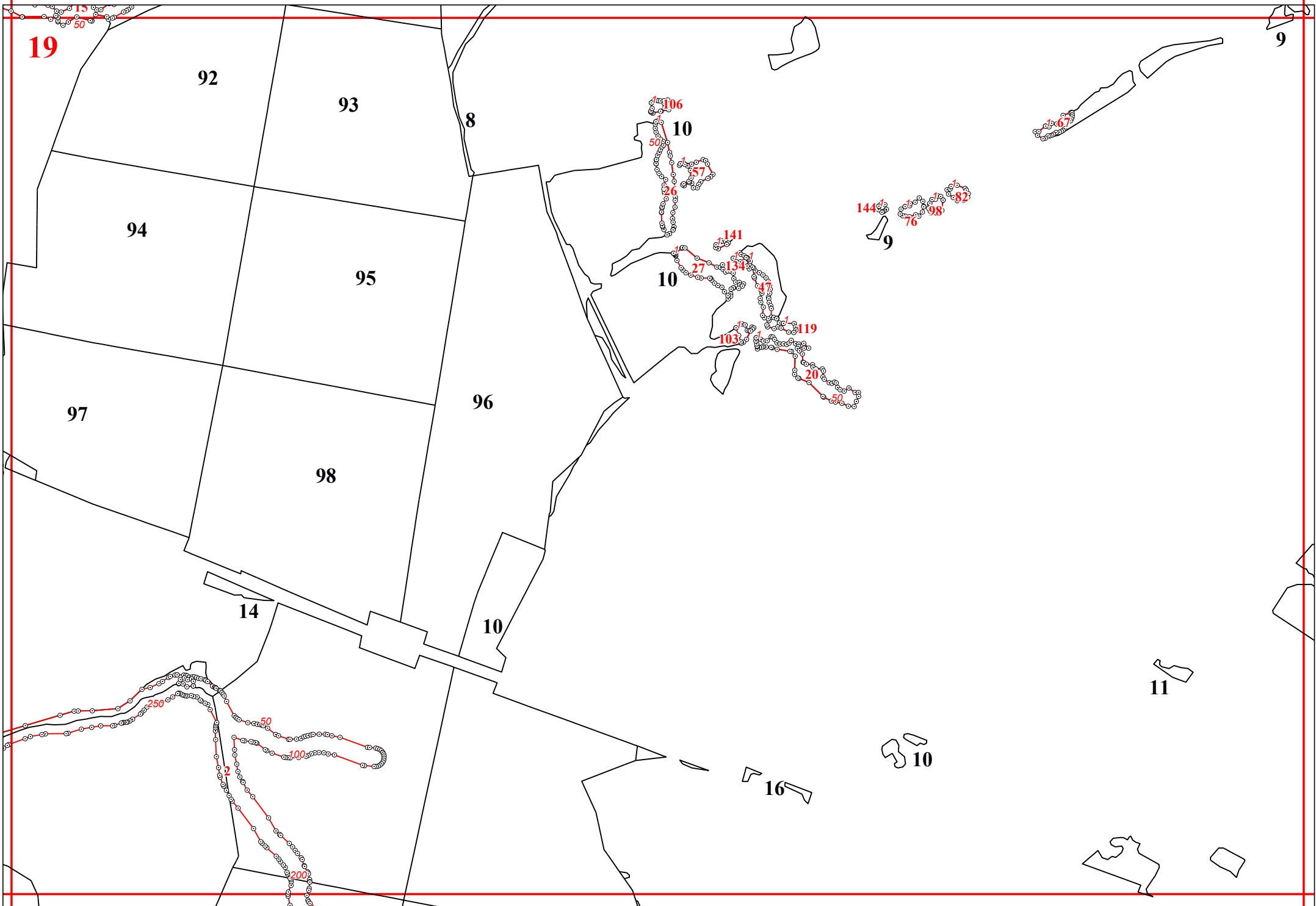


16









22

34

35

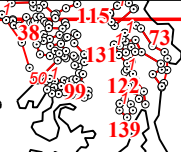
36

12

13

13

82



23

83

15

86

15

86

14

14

84

15

85

14

14

14

15

87

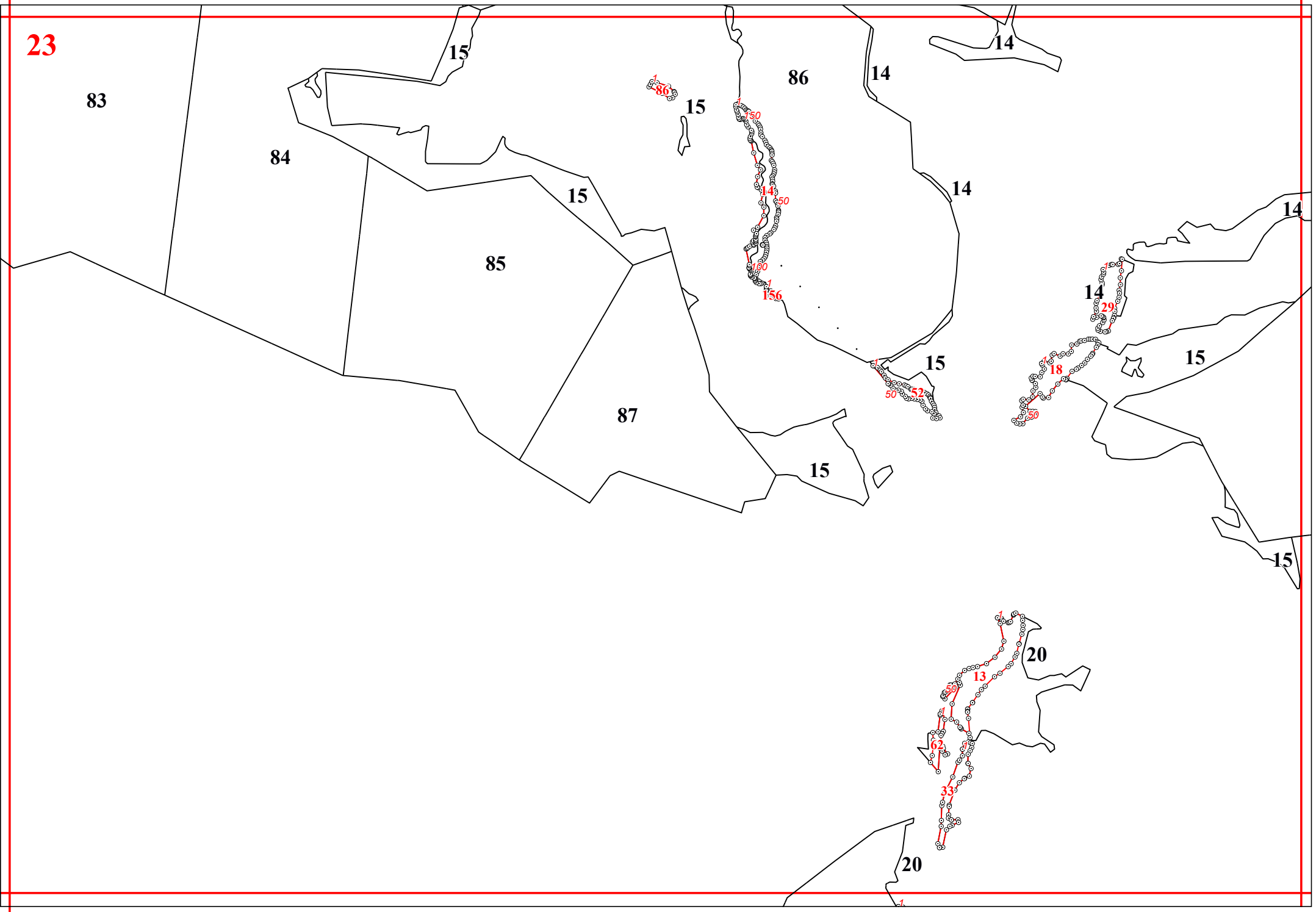
15

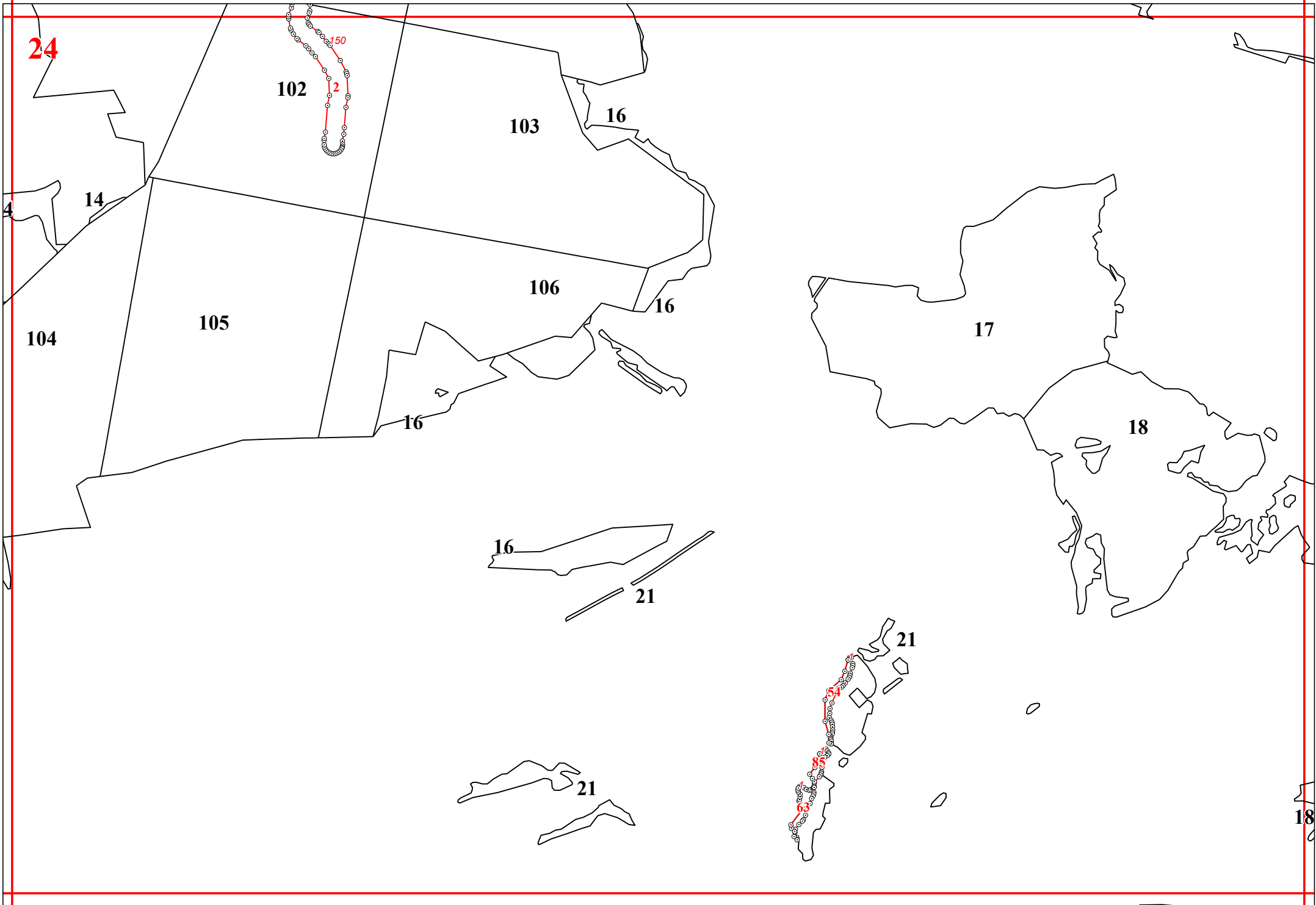
15

15

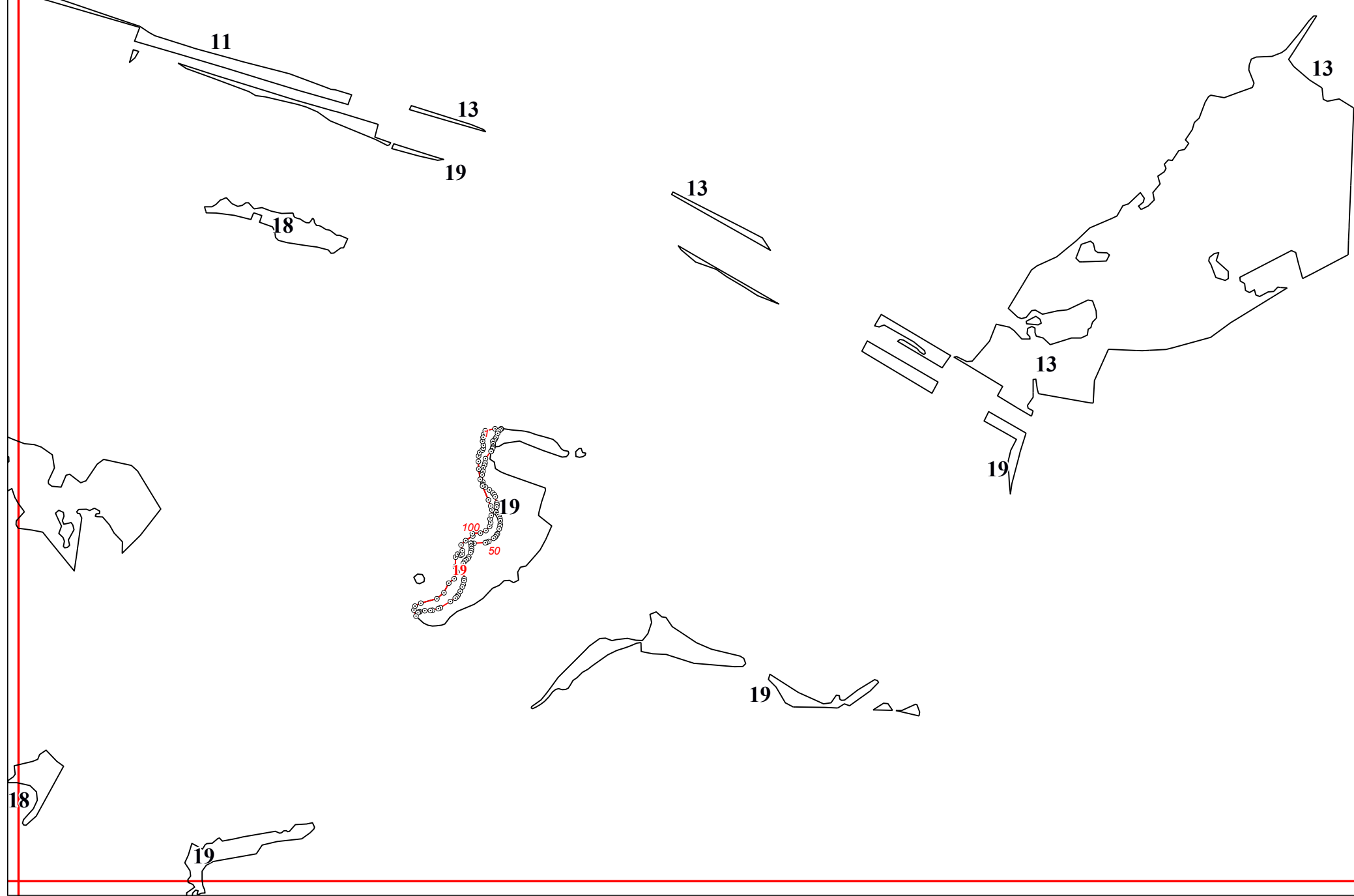
20

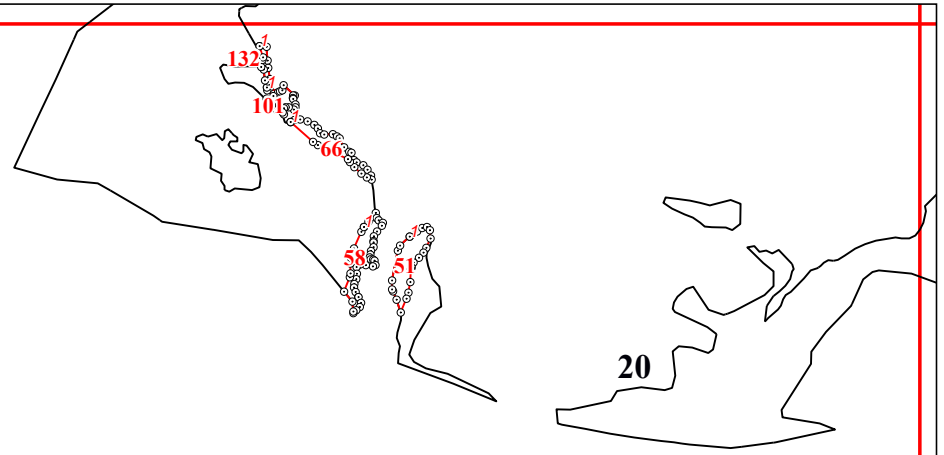
20





25





29

