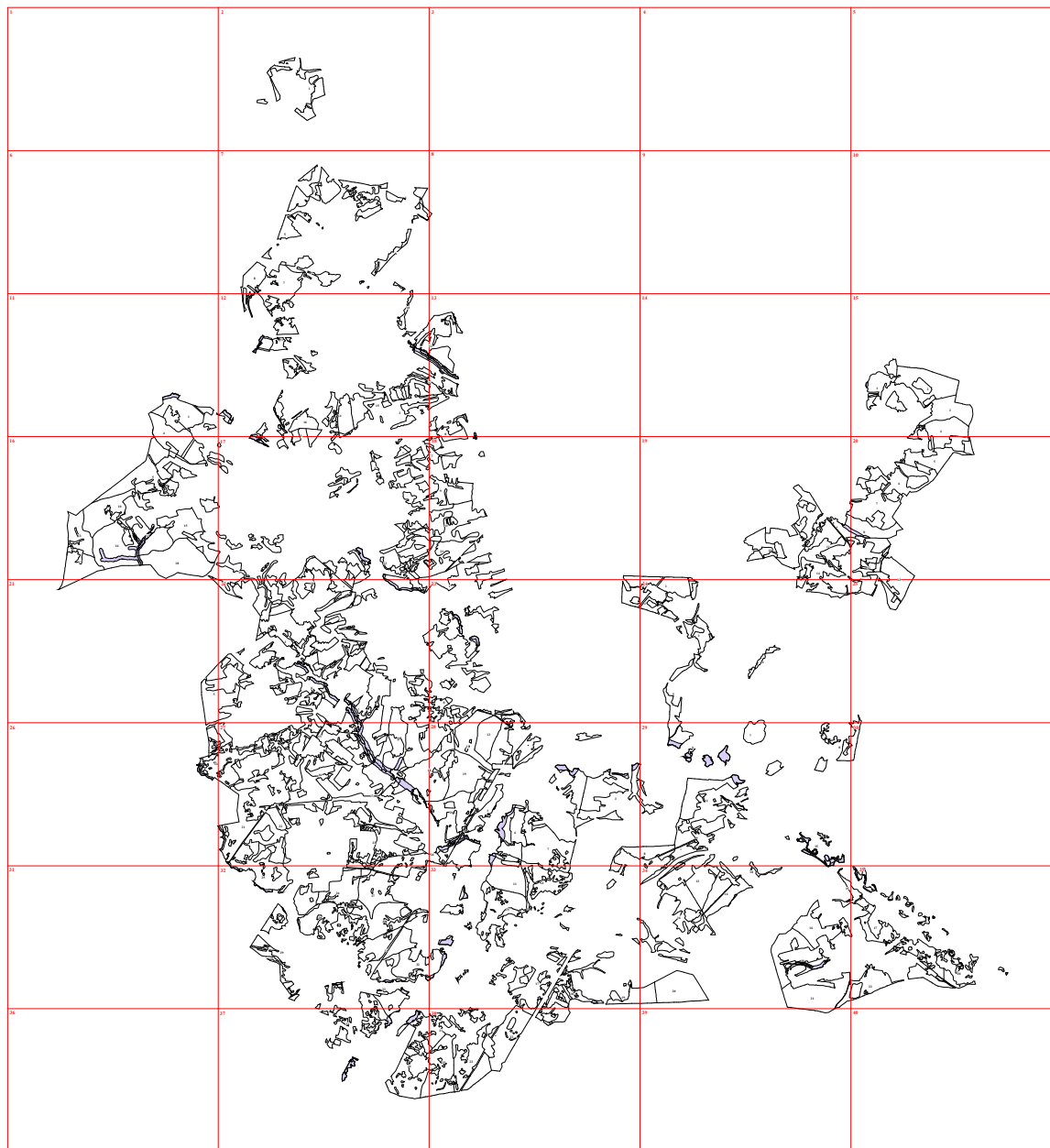
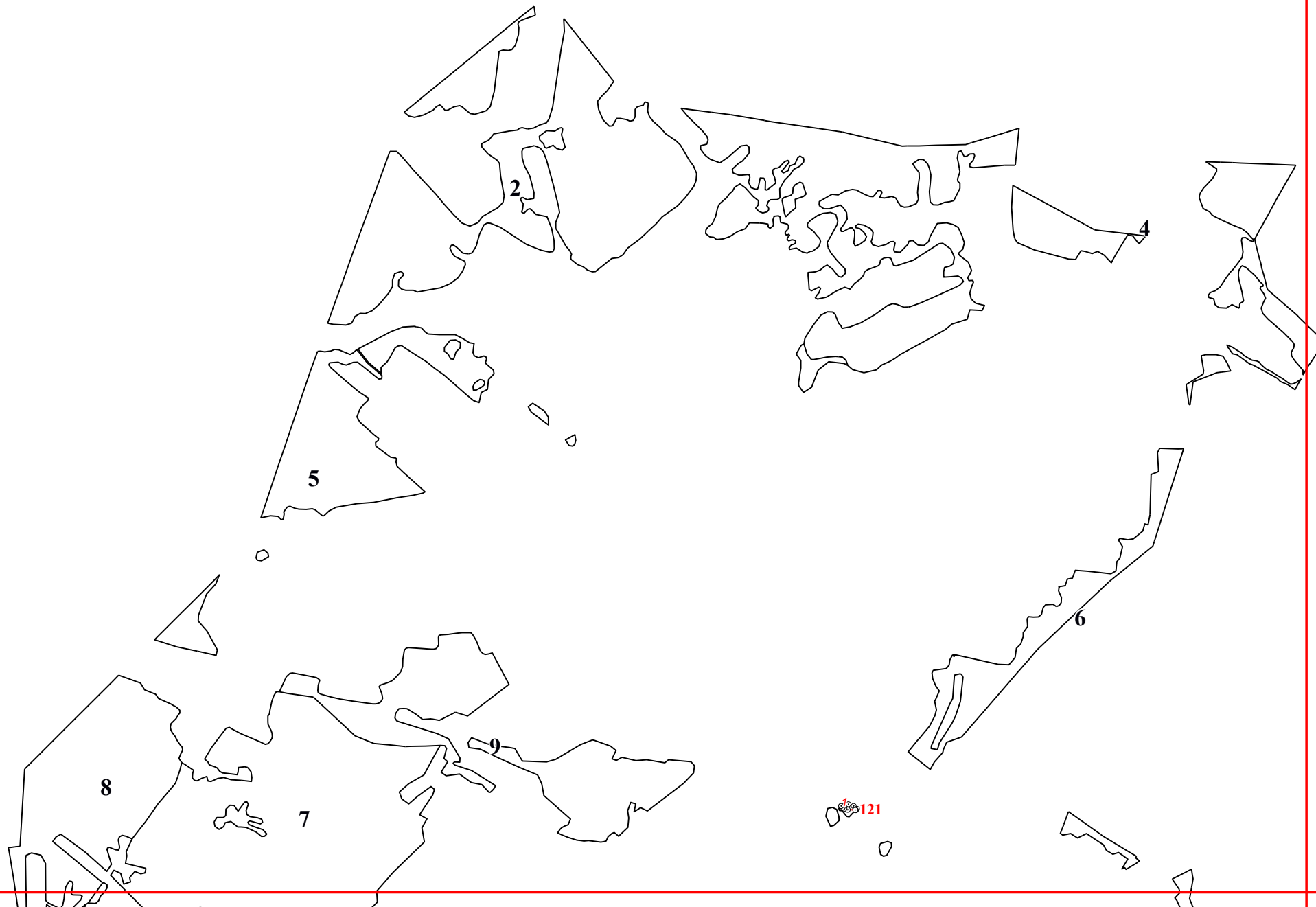
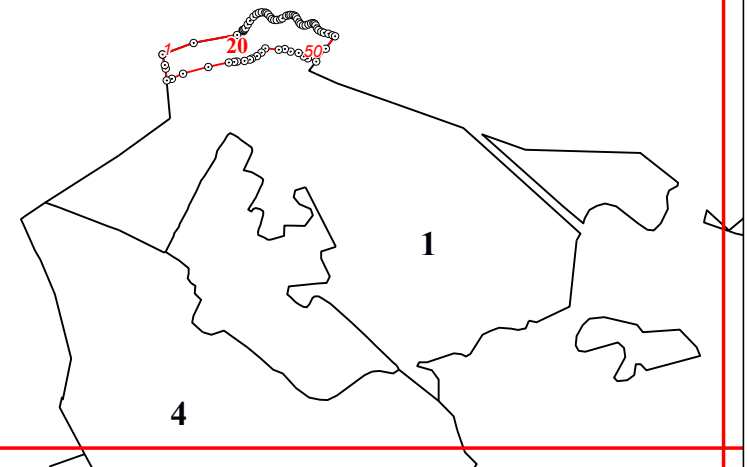


**Графическое описание местоположения границ земель, на которых располагаются леса,
расположенные в водоохранных зонах, на территории Высокского участкового
лесничества Думиничского лесничества Калужской области**

Приложение № 14 к приказу Рослесхоза
от 28.02.2023 № 272

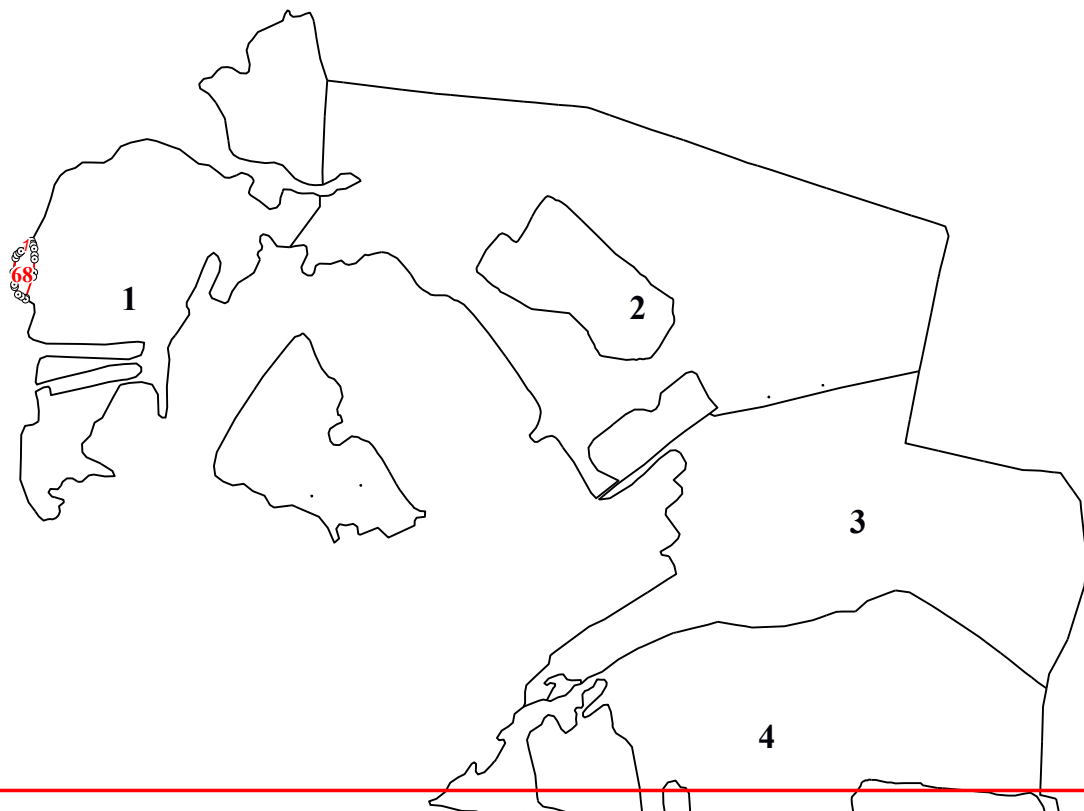


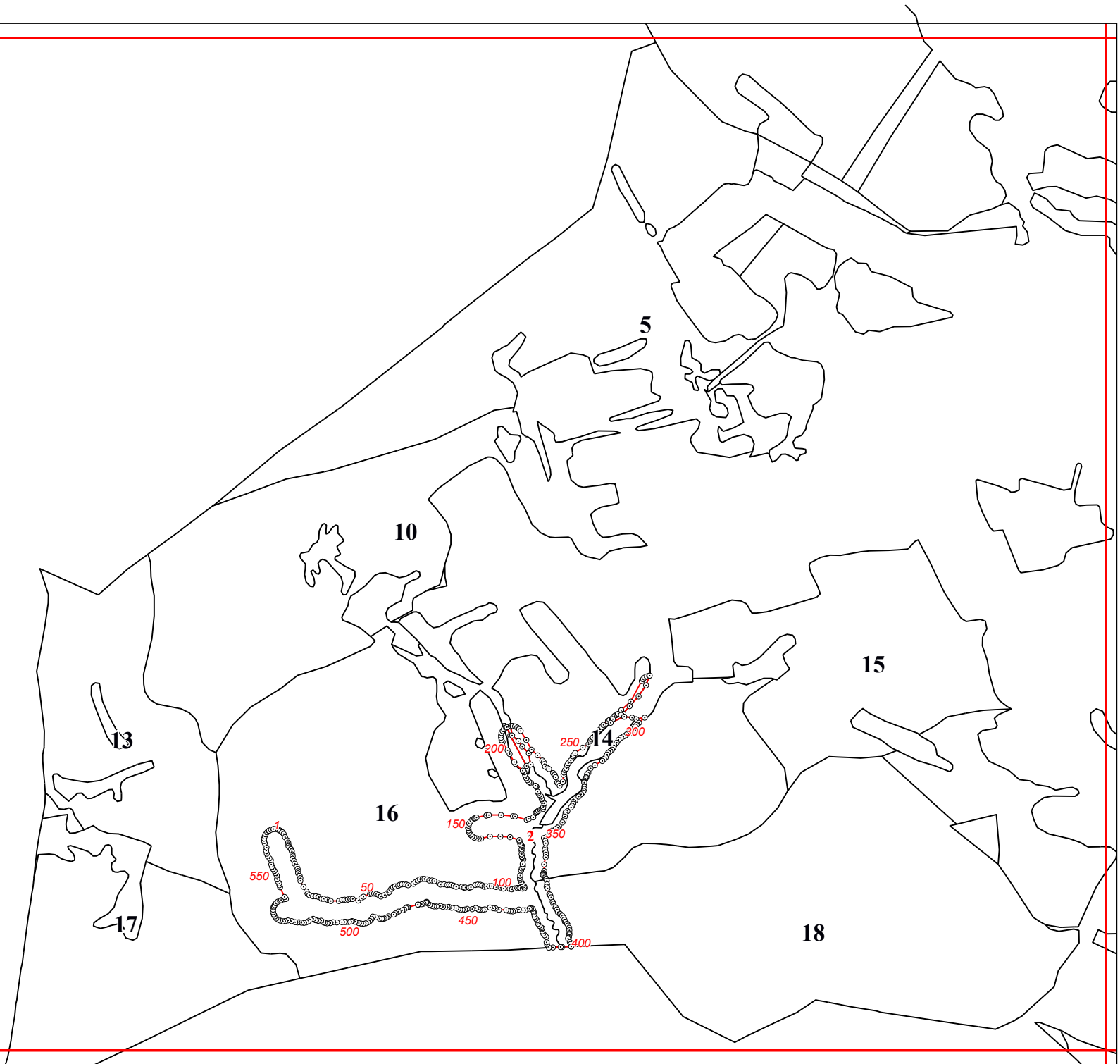




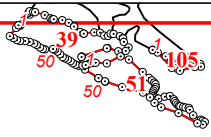
12







17



2

90

6

6

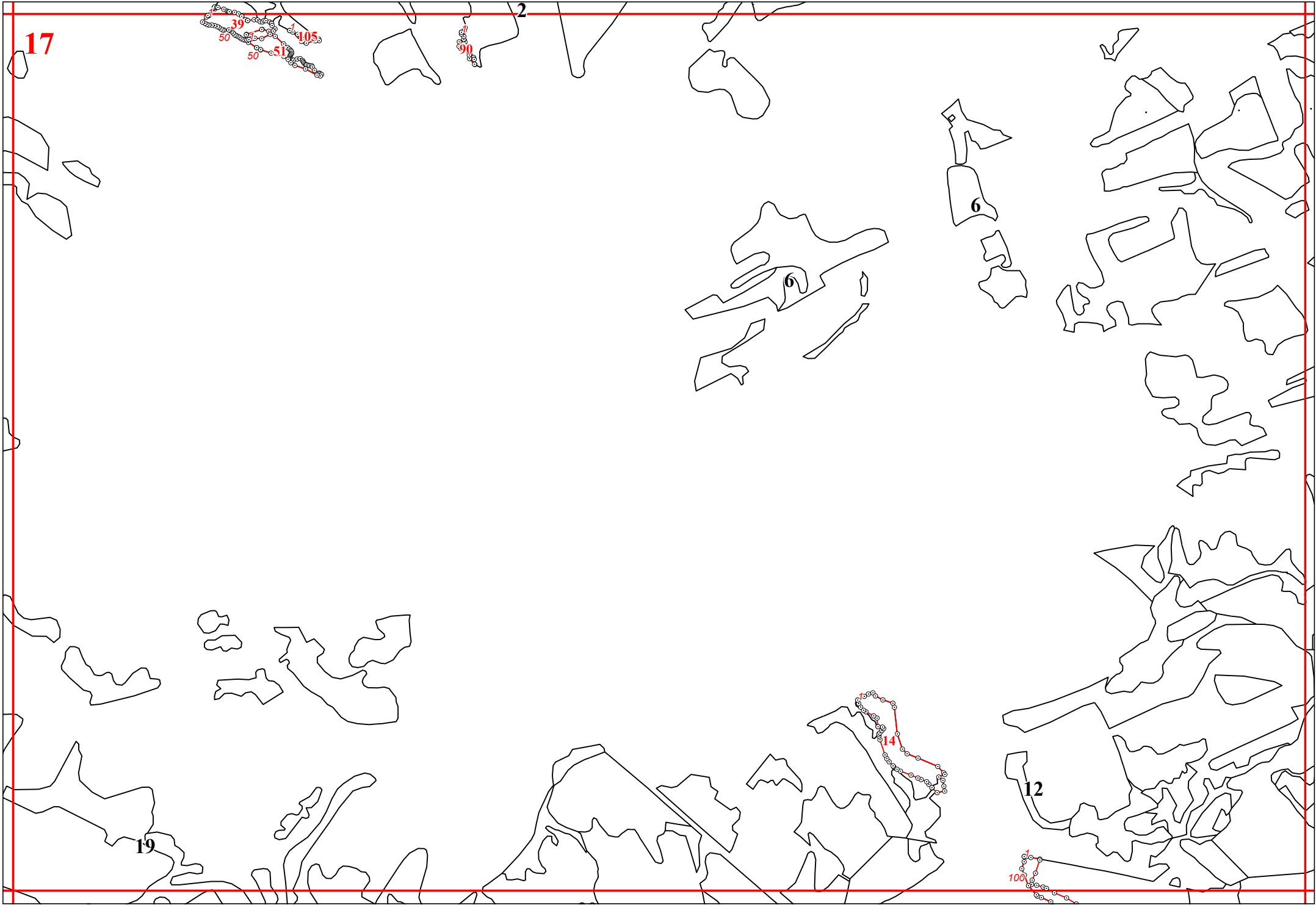
19

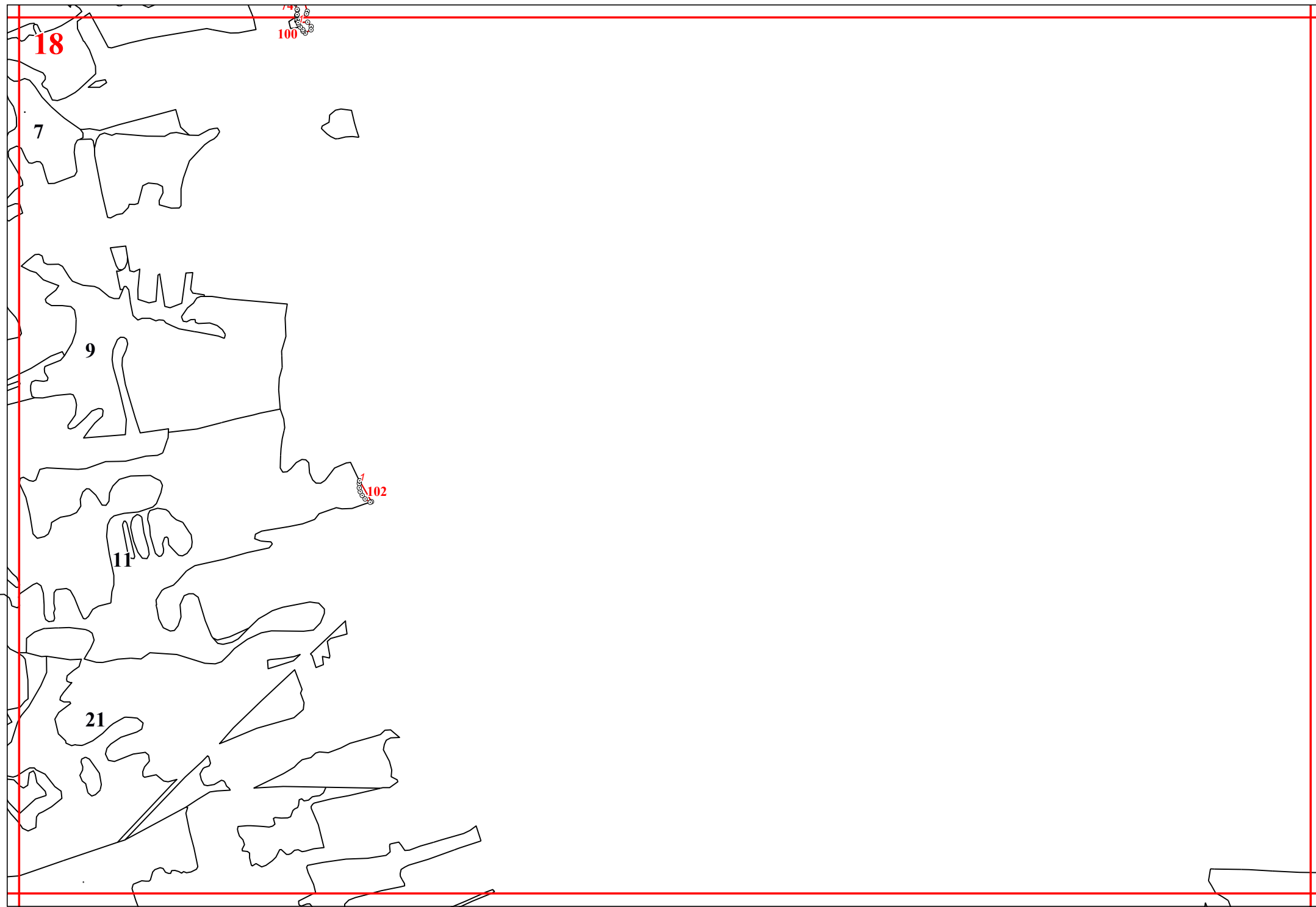
150

14

12

100





18

74
100

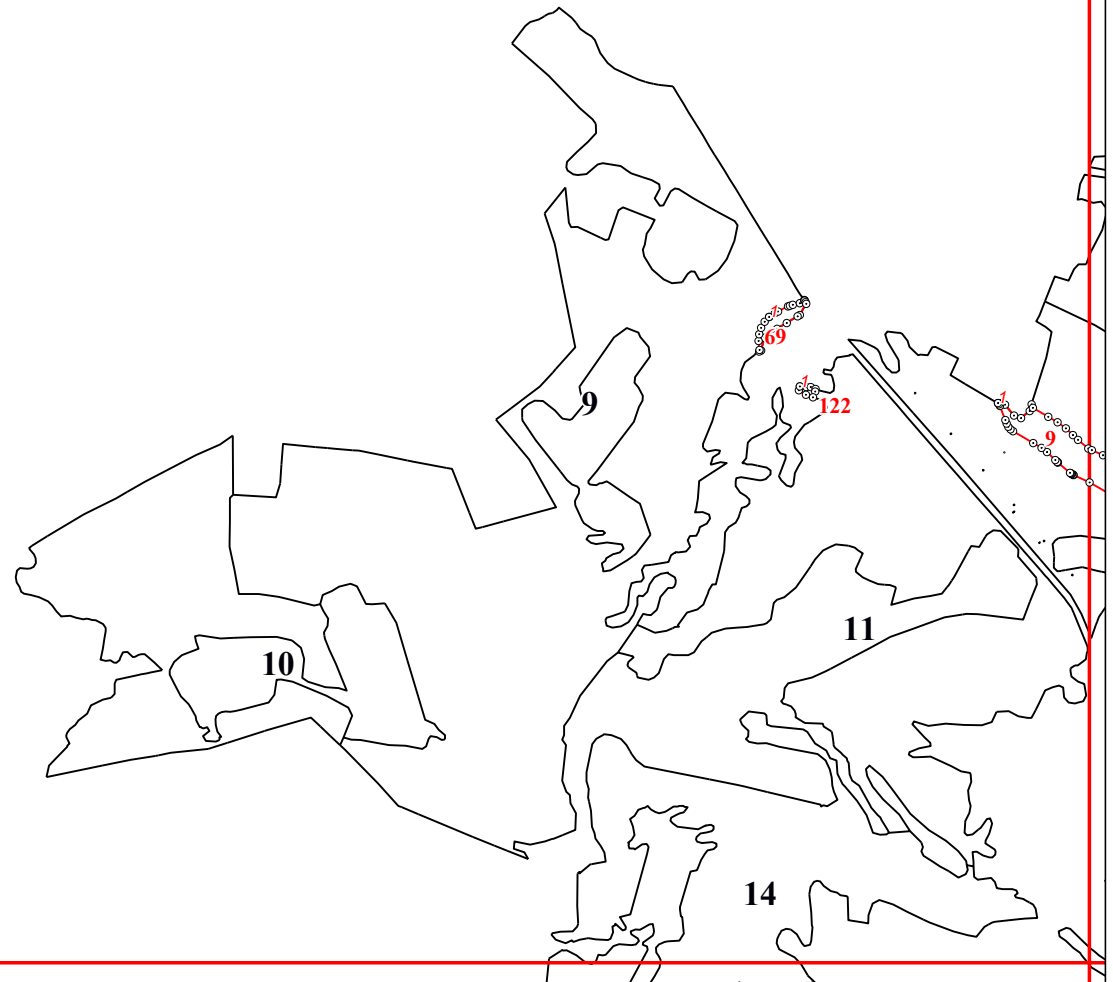
7

9

11

21

102



20



13

12

8

9

7

6

5

22

20

2

3

93

117

116

1

61

197

15

33

6

100

50

46

7

50

44

66

6

50



23

1

126

22

50

4

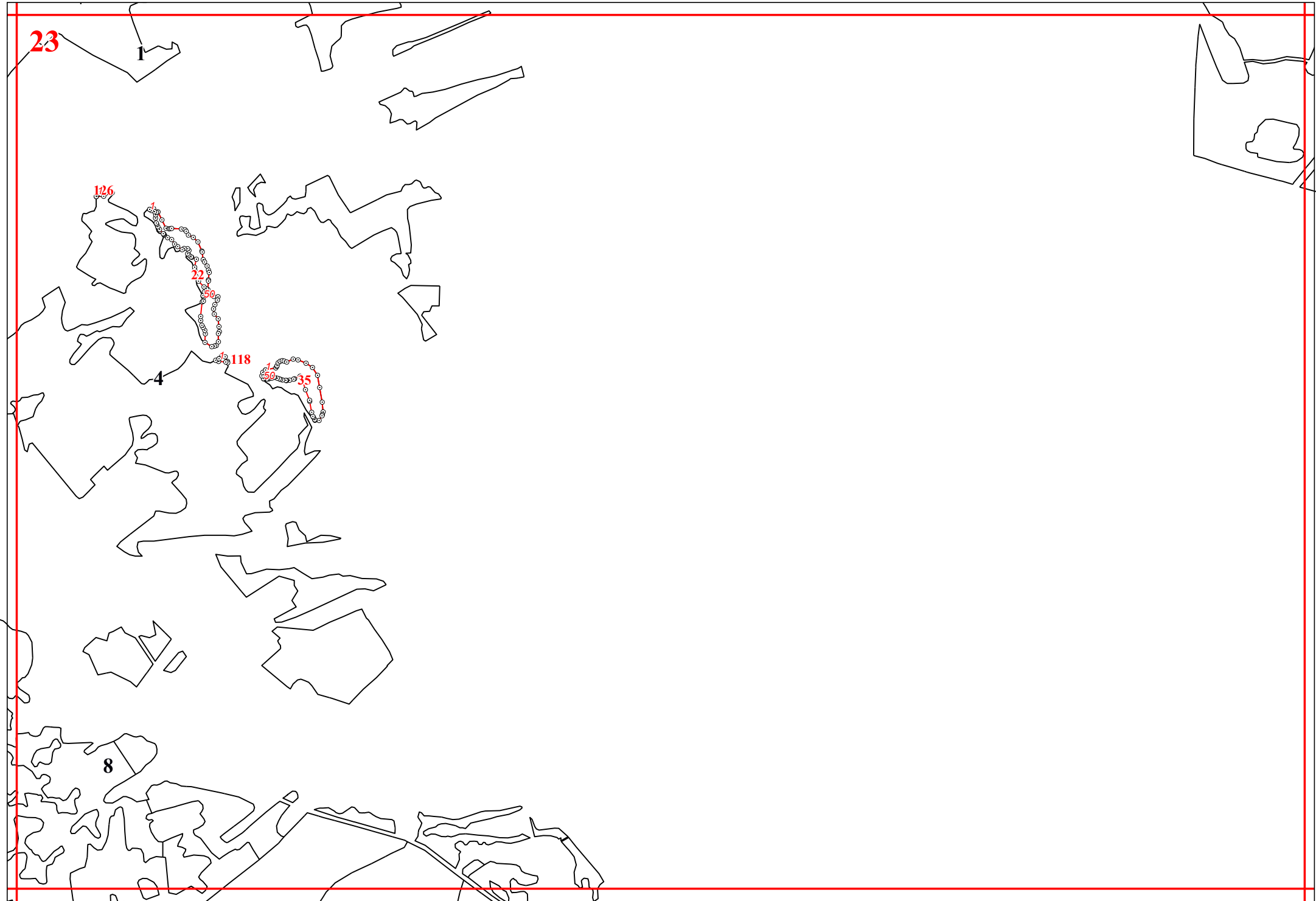
118

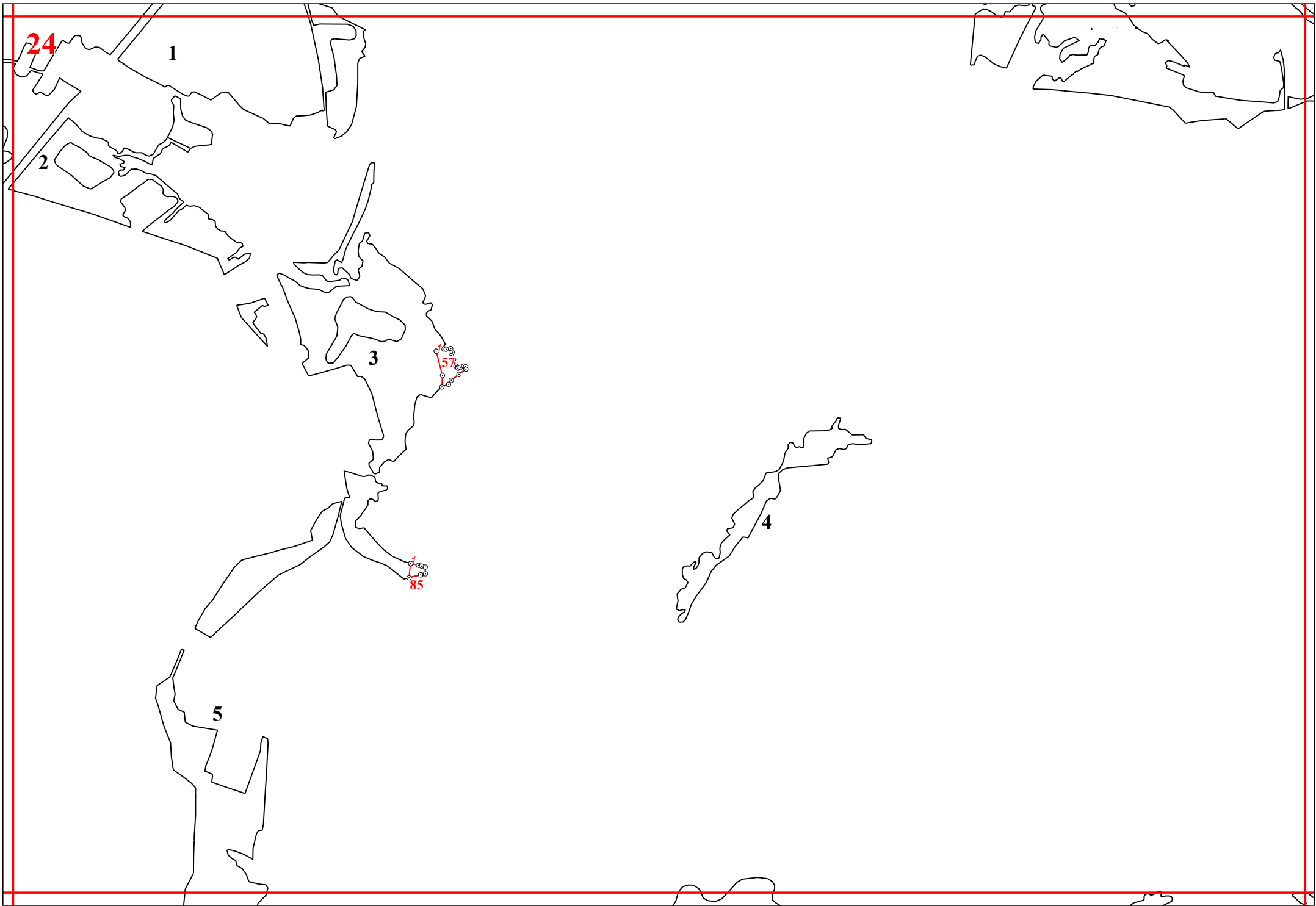
1

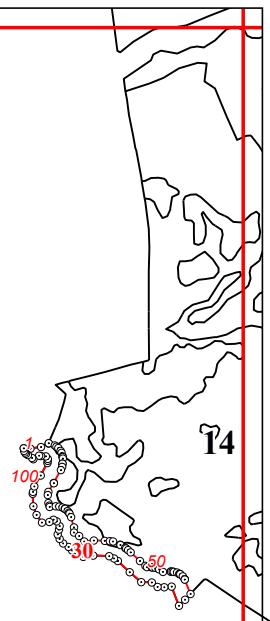
50

35

8







10

27

15

10

16

18

17

28

119

21

22

23

100

24

50

98

72

300

350

50

100

1

250

100

50

150

200

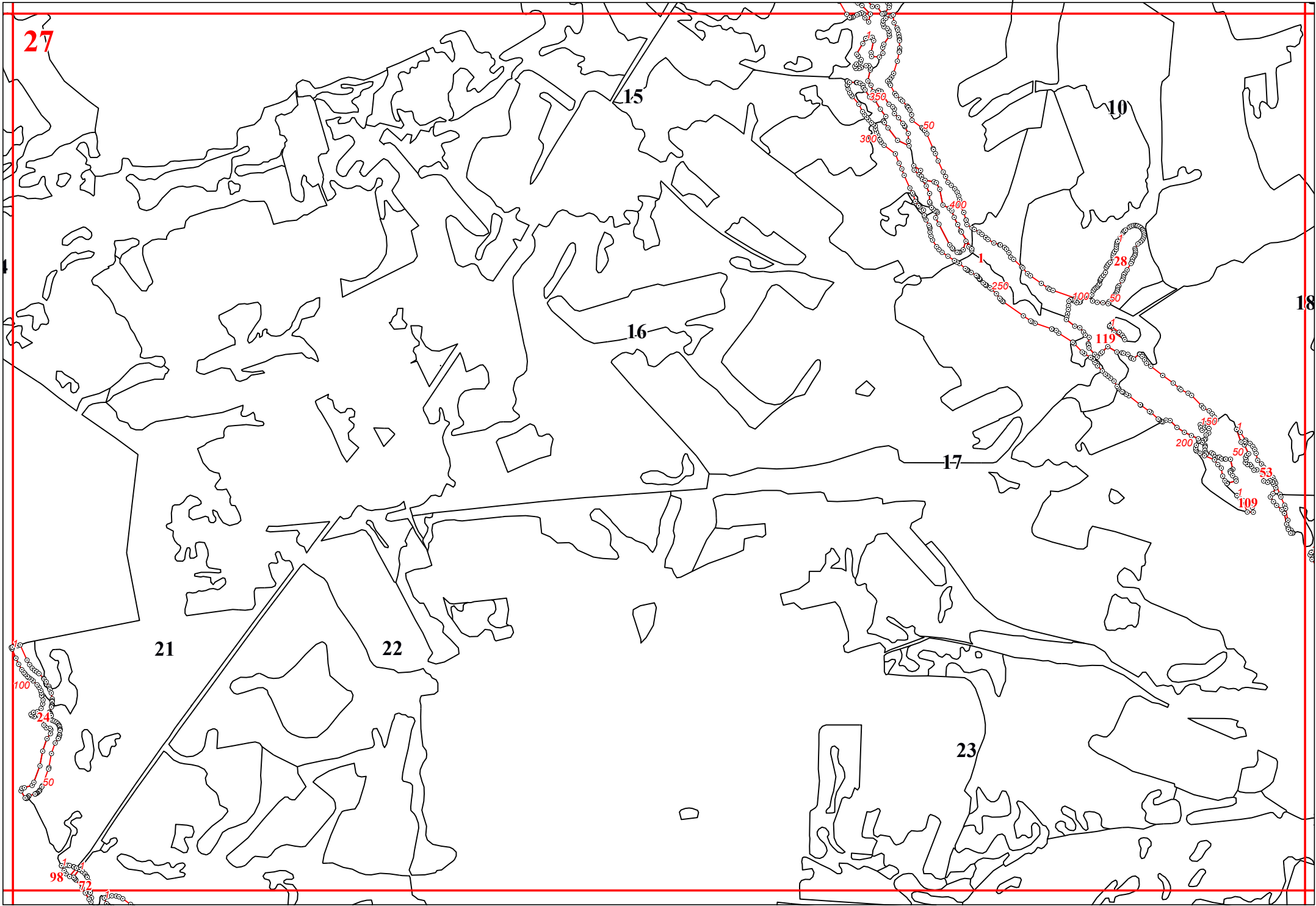
1

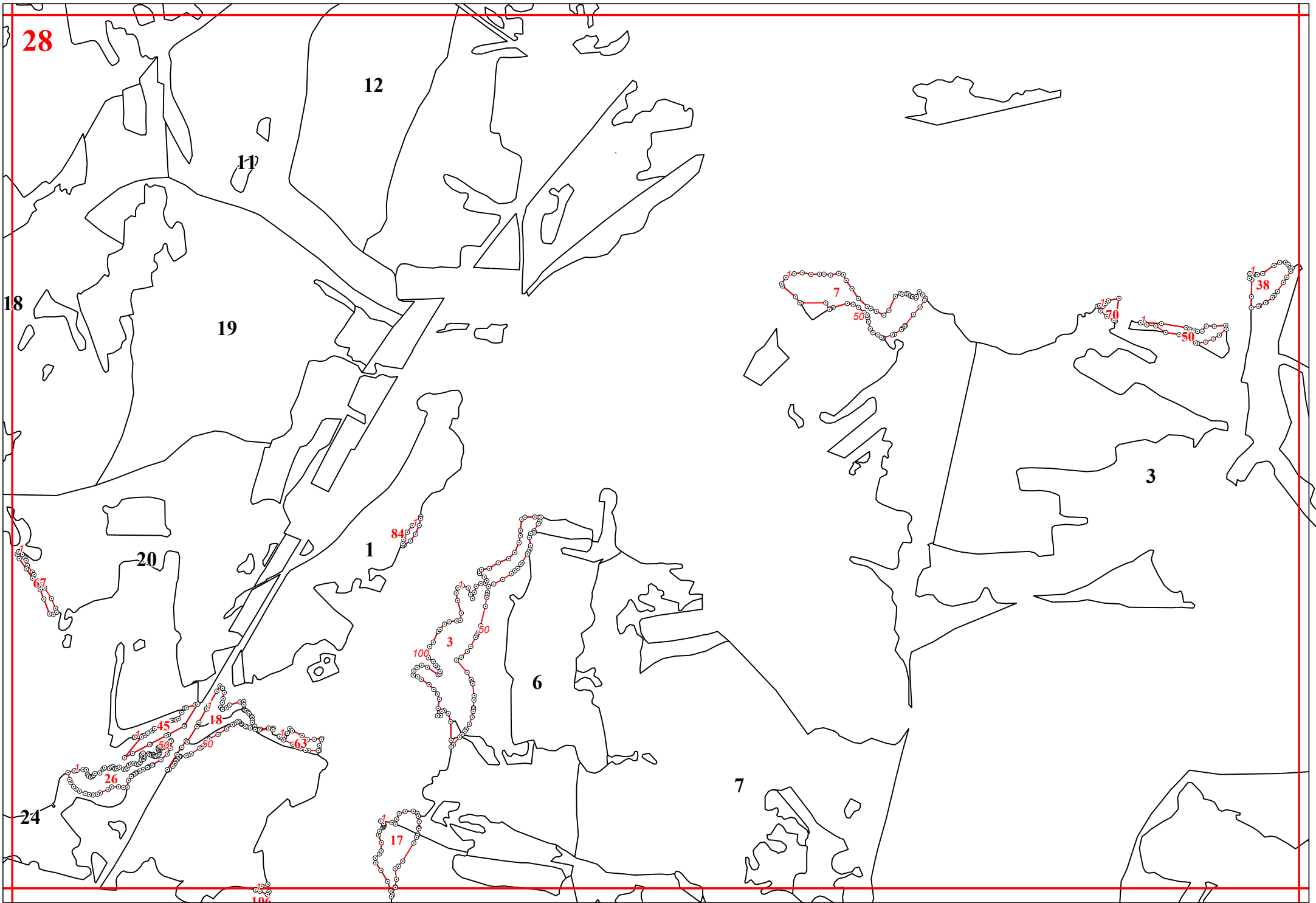
50

1

100

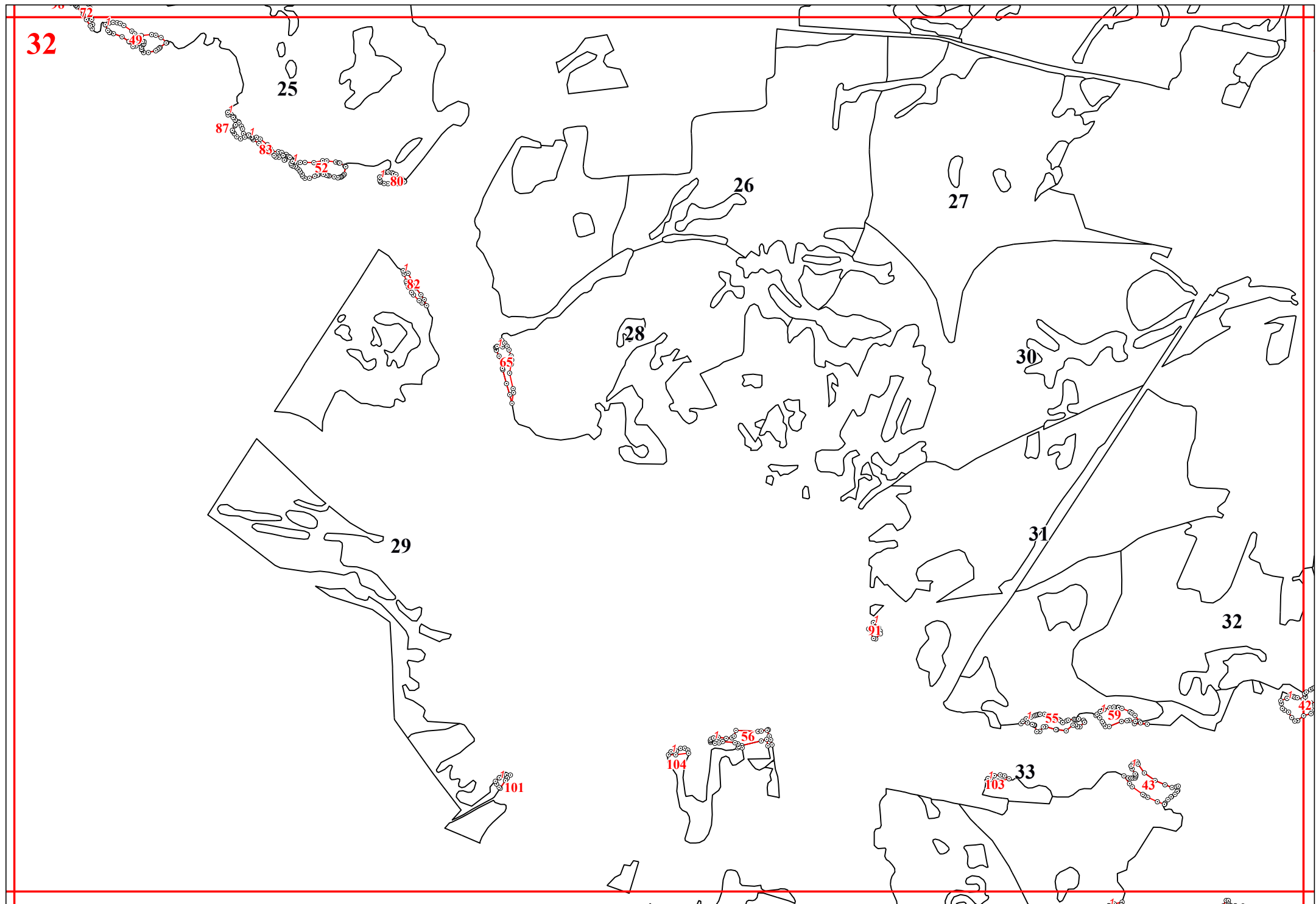
53







32



33

106

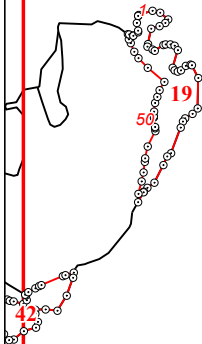
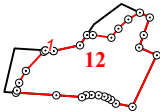
11

12



110

15



95

17

18

19

62

