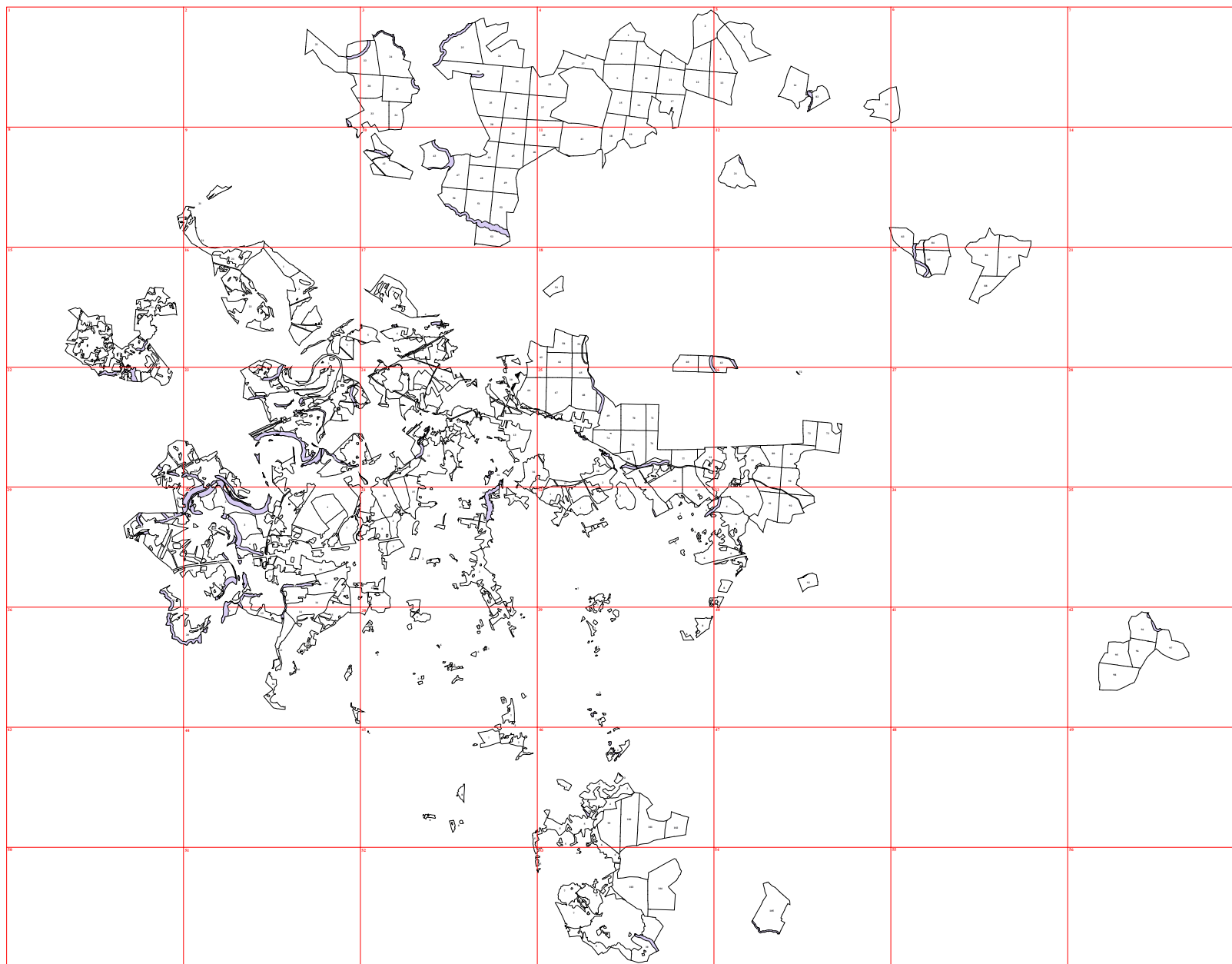
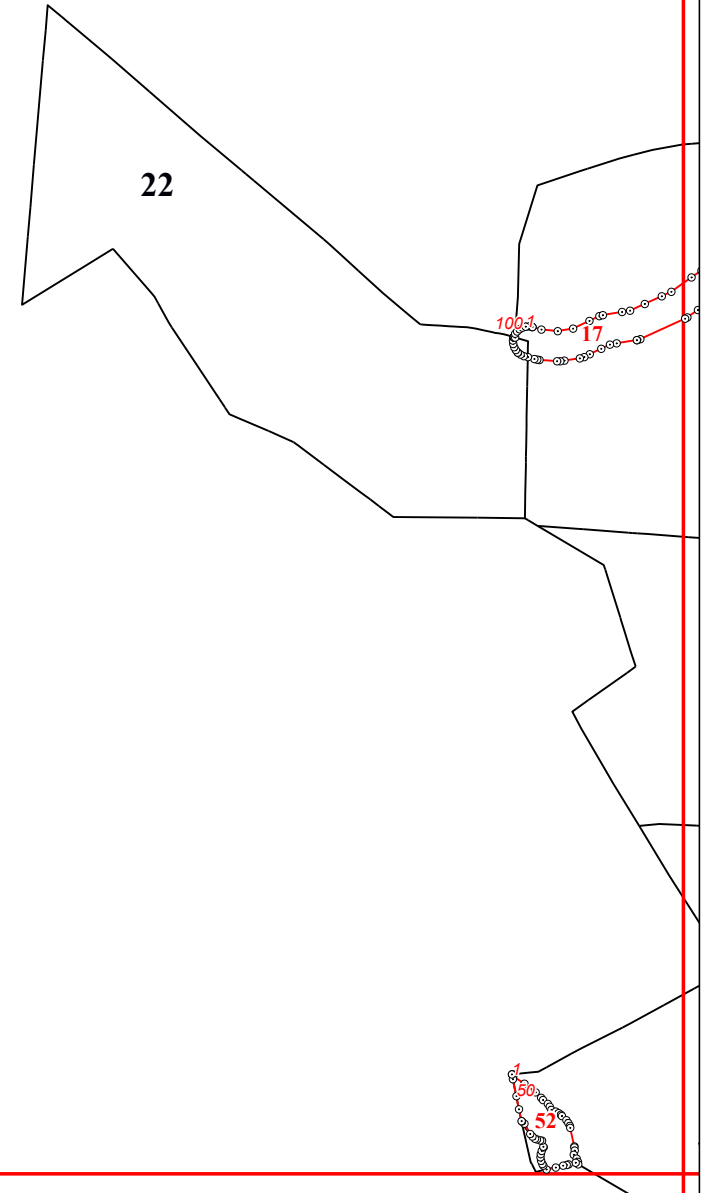


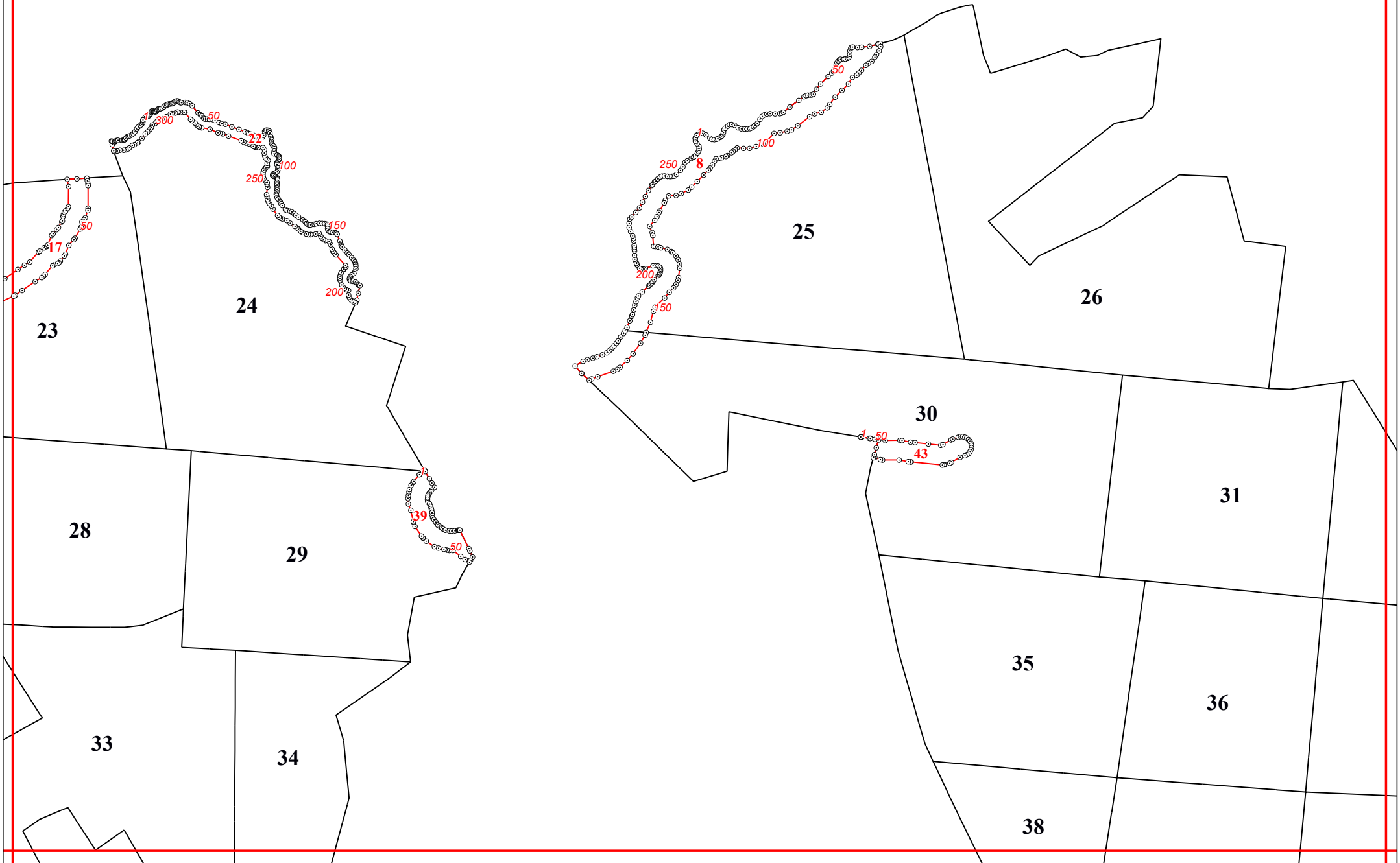
**Графическое описание местоположения границ земель,
на которых располагаются леса, расположенные в водоохранных зонах,
на территории Юхновского участкового лесничества
Юхновского лесничества Калужской области**

Приложение № 64 к приказу Рослесхоза
от 28.02.2023 № 269





3



5

3

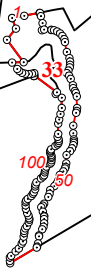
8

13

14

82

20

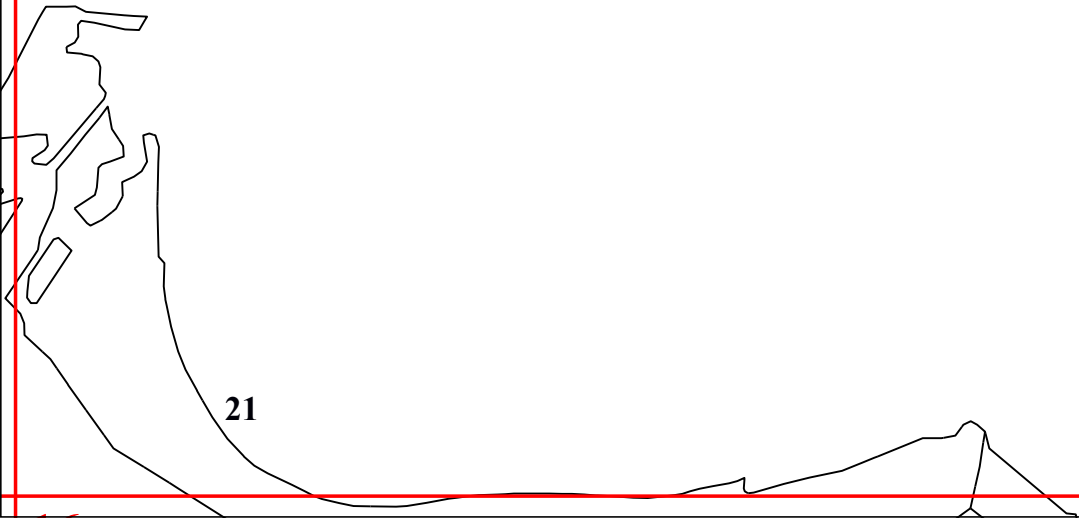
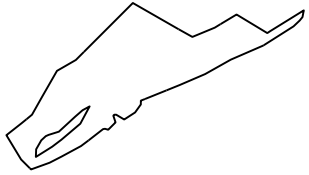


9

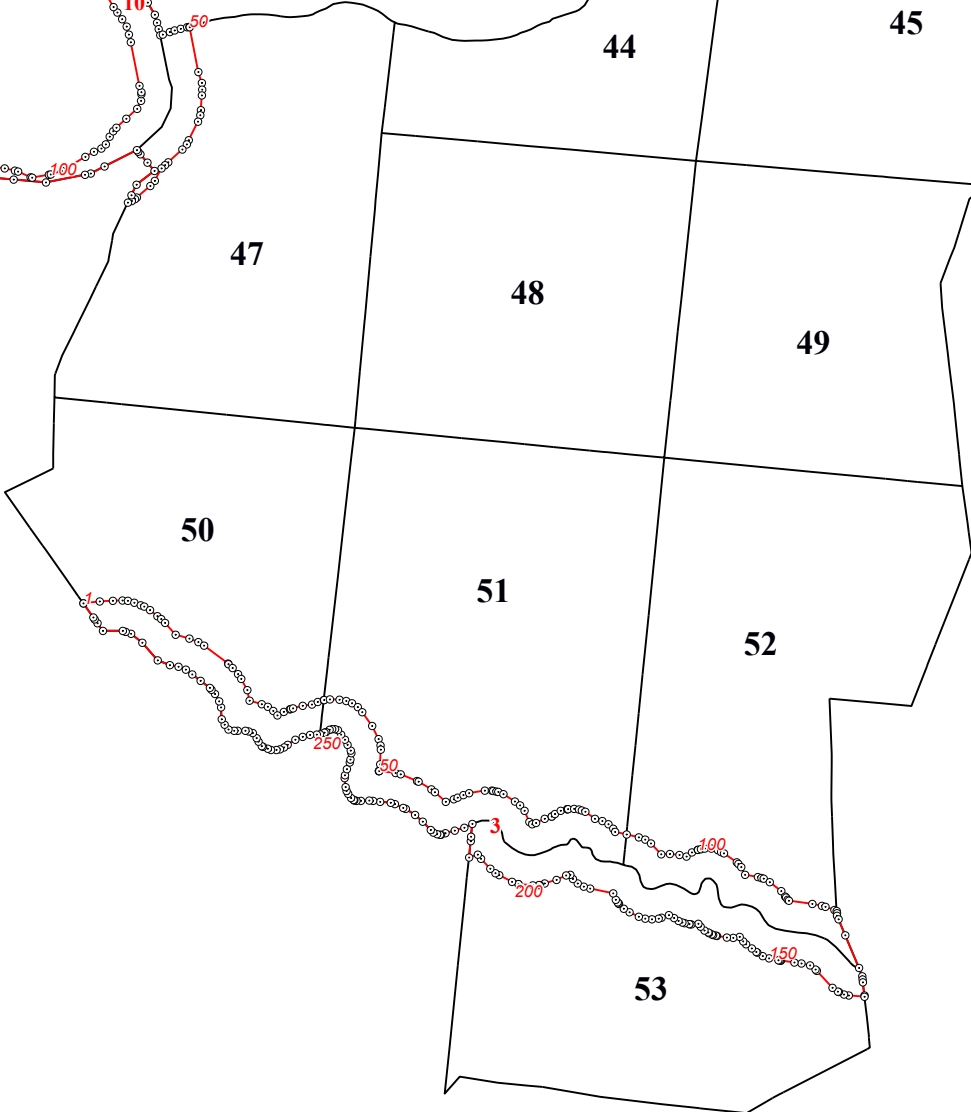
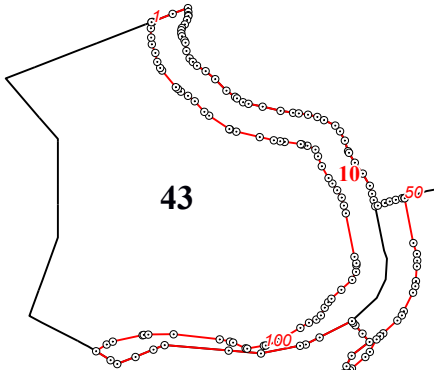
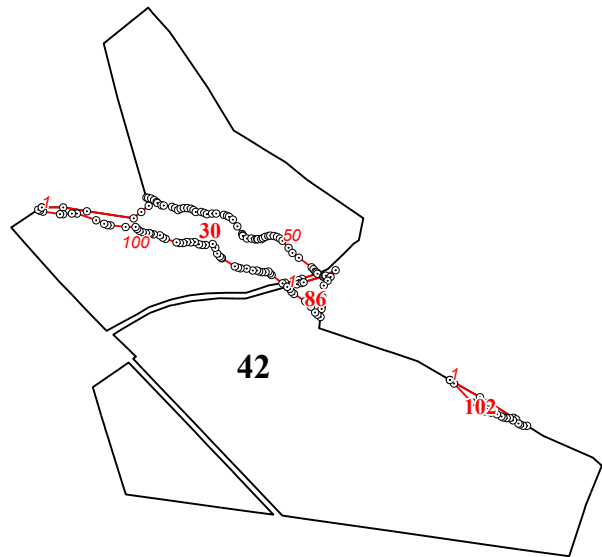
124

21

21



10



39

46

43

44

45

42

47

48

49

50

51

52

53

11

40

41

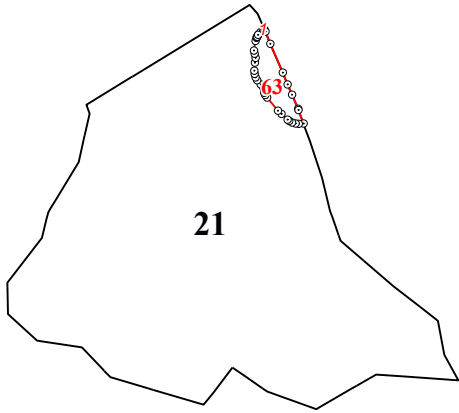
18

19

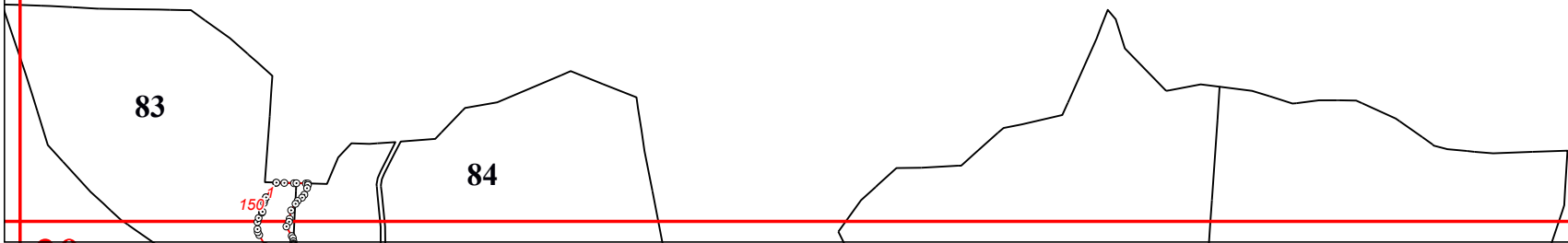
11

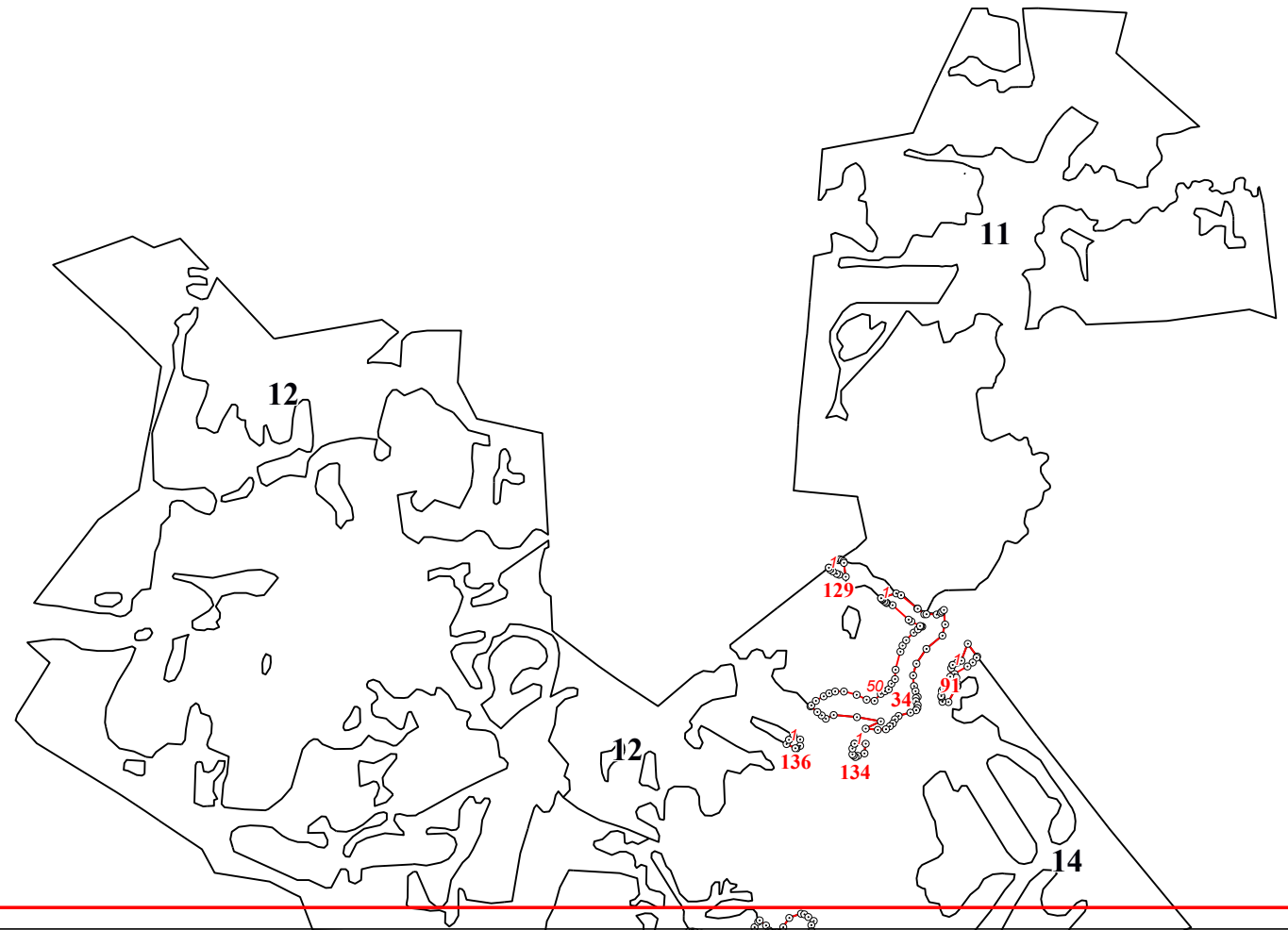
10

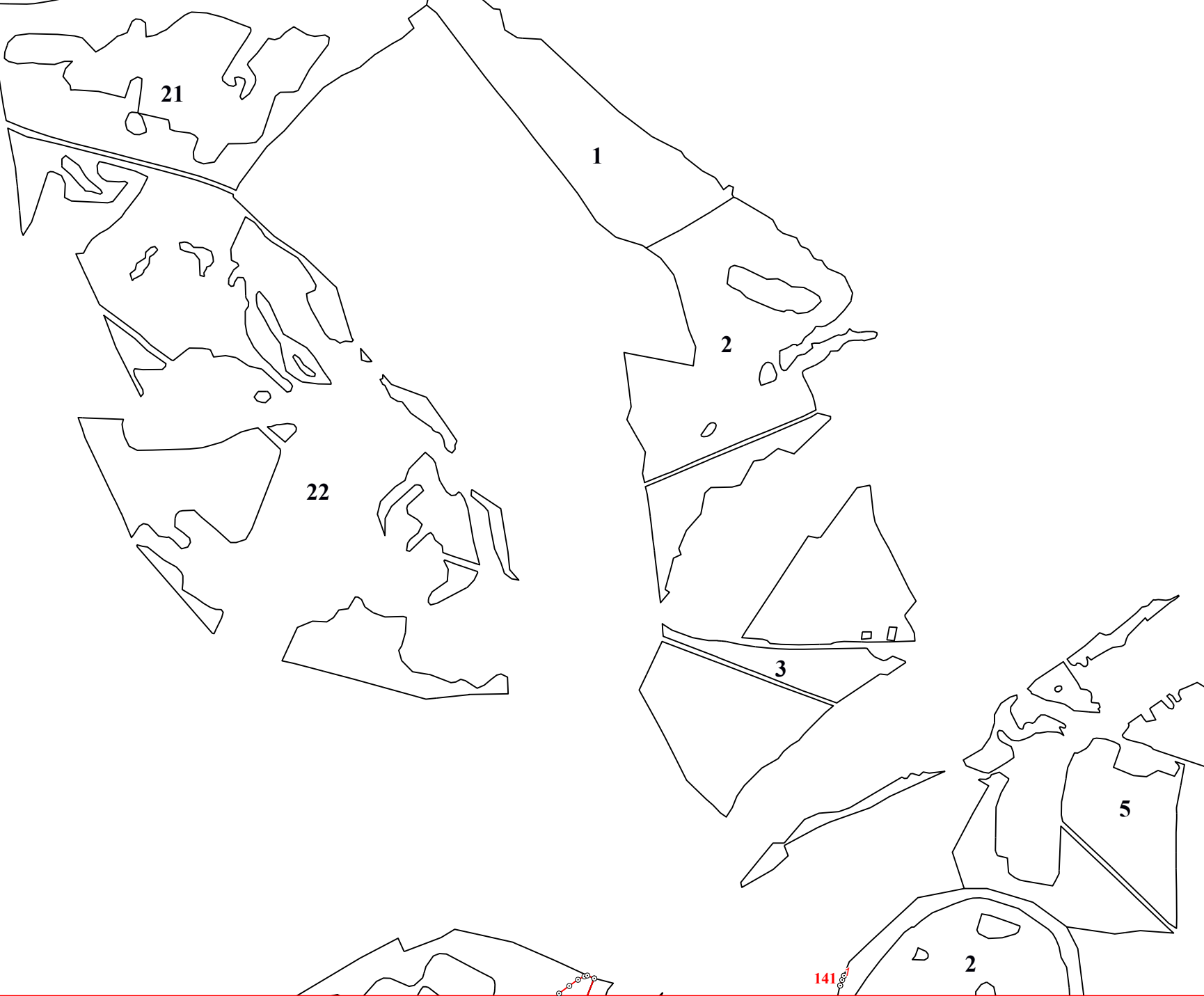
12

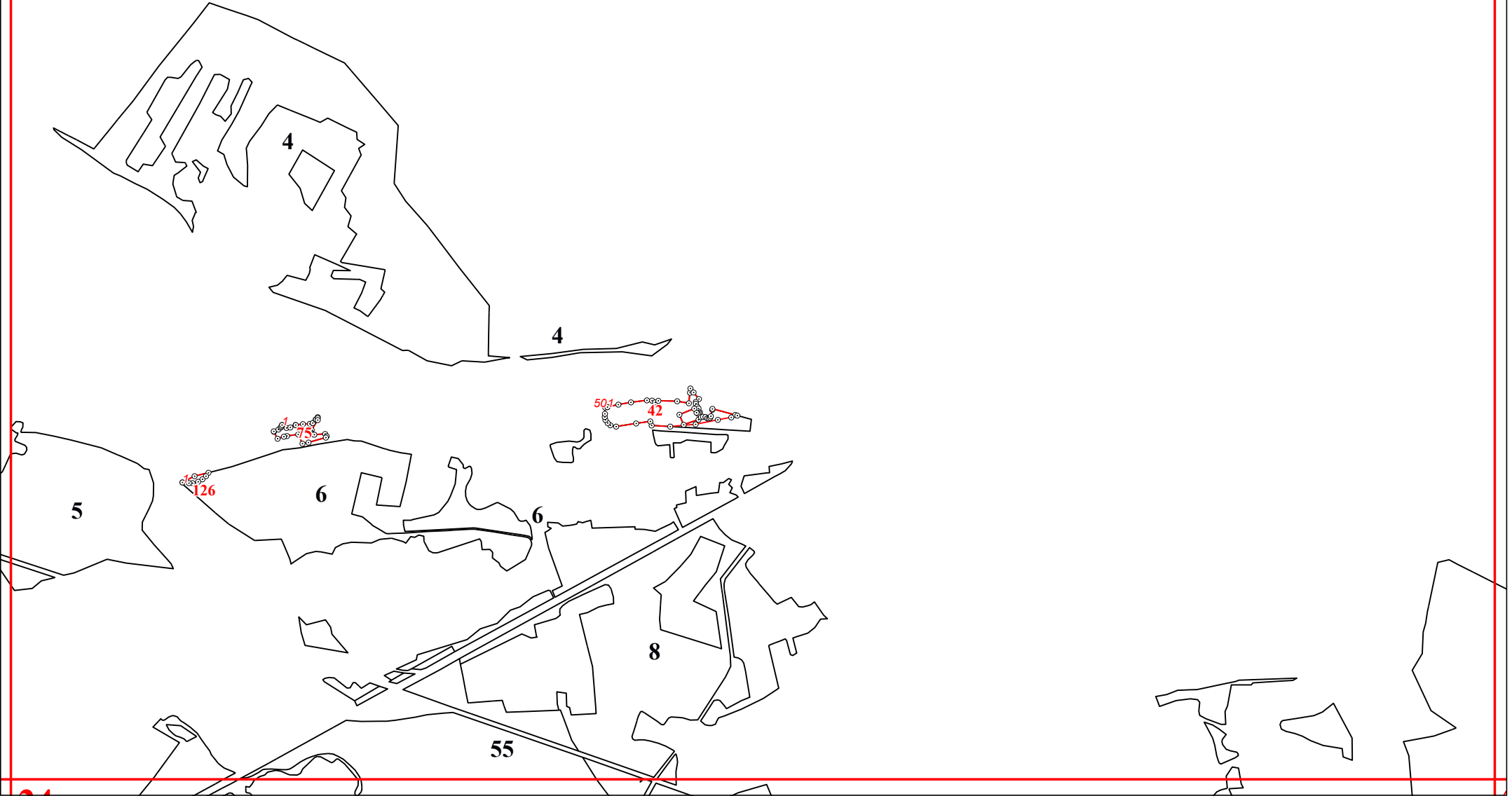


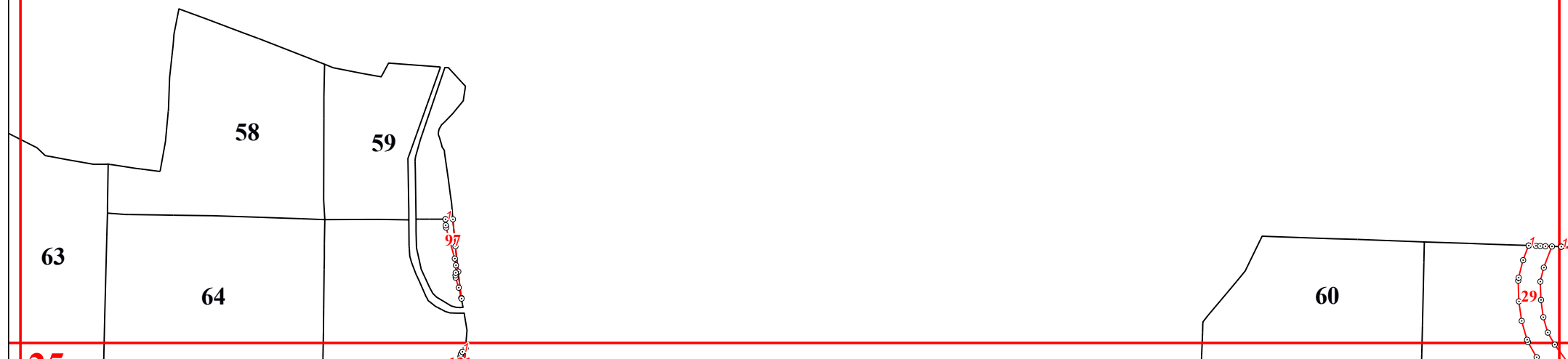
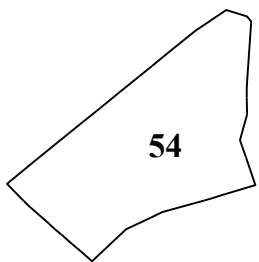
10

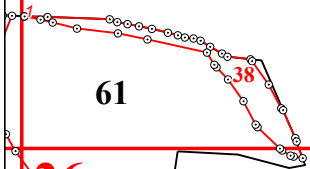




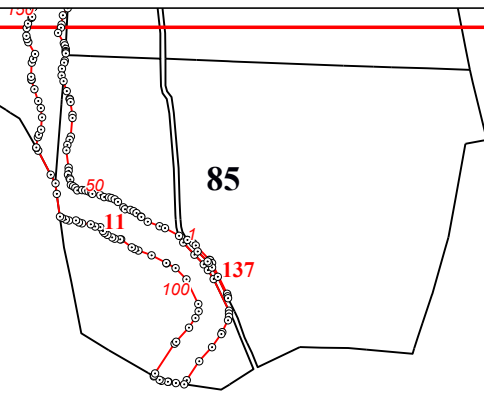








20

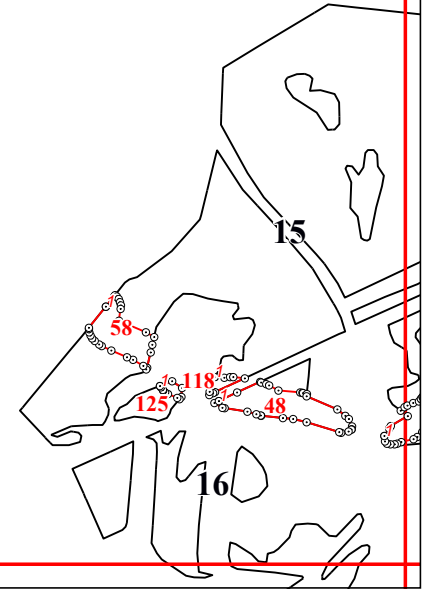
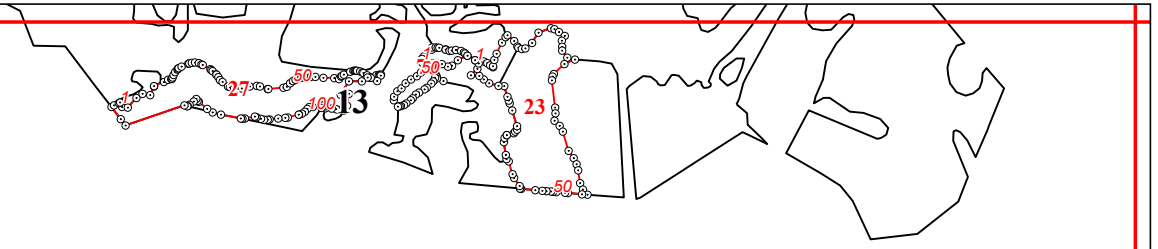


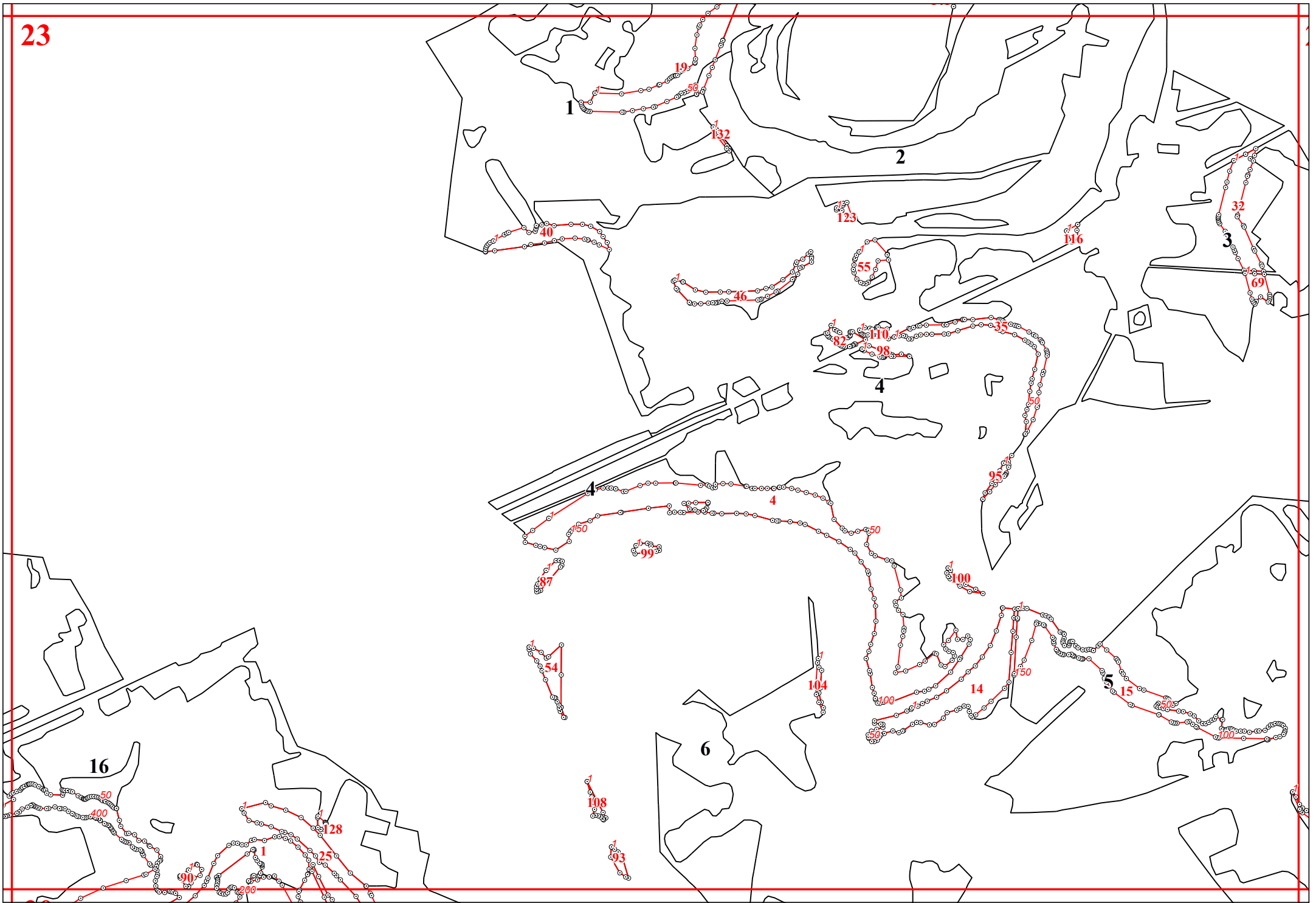
85

86

87

88





24

7

8

9

10

66

96

12

13

5

11

10

16

16

109

138

50

26

11

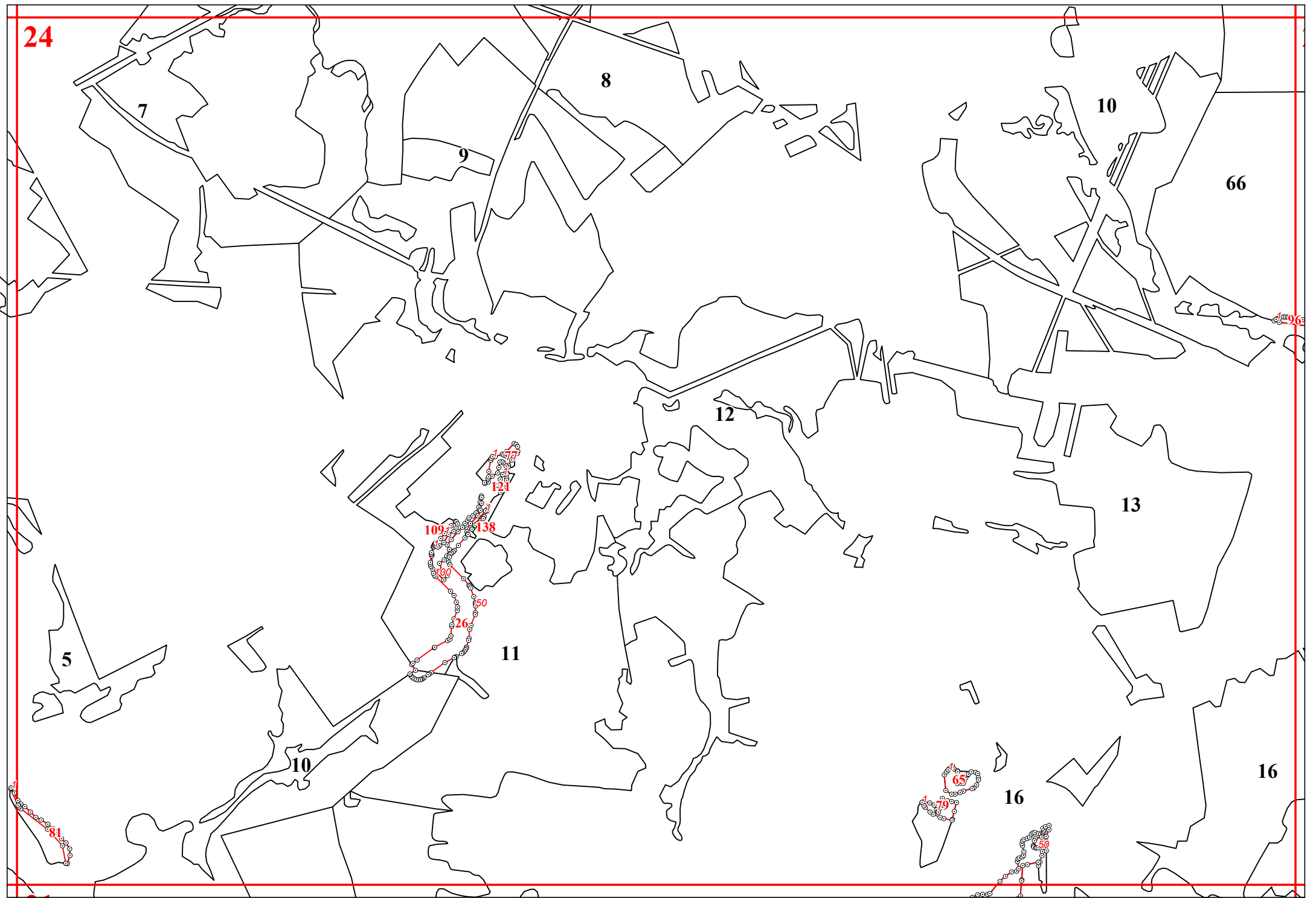
147

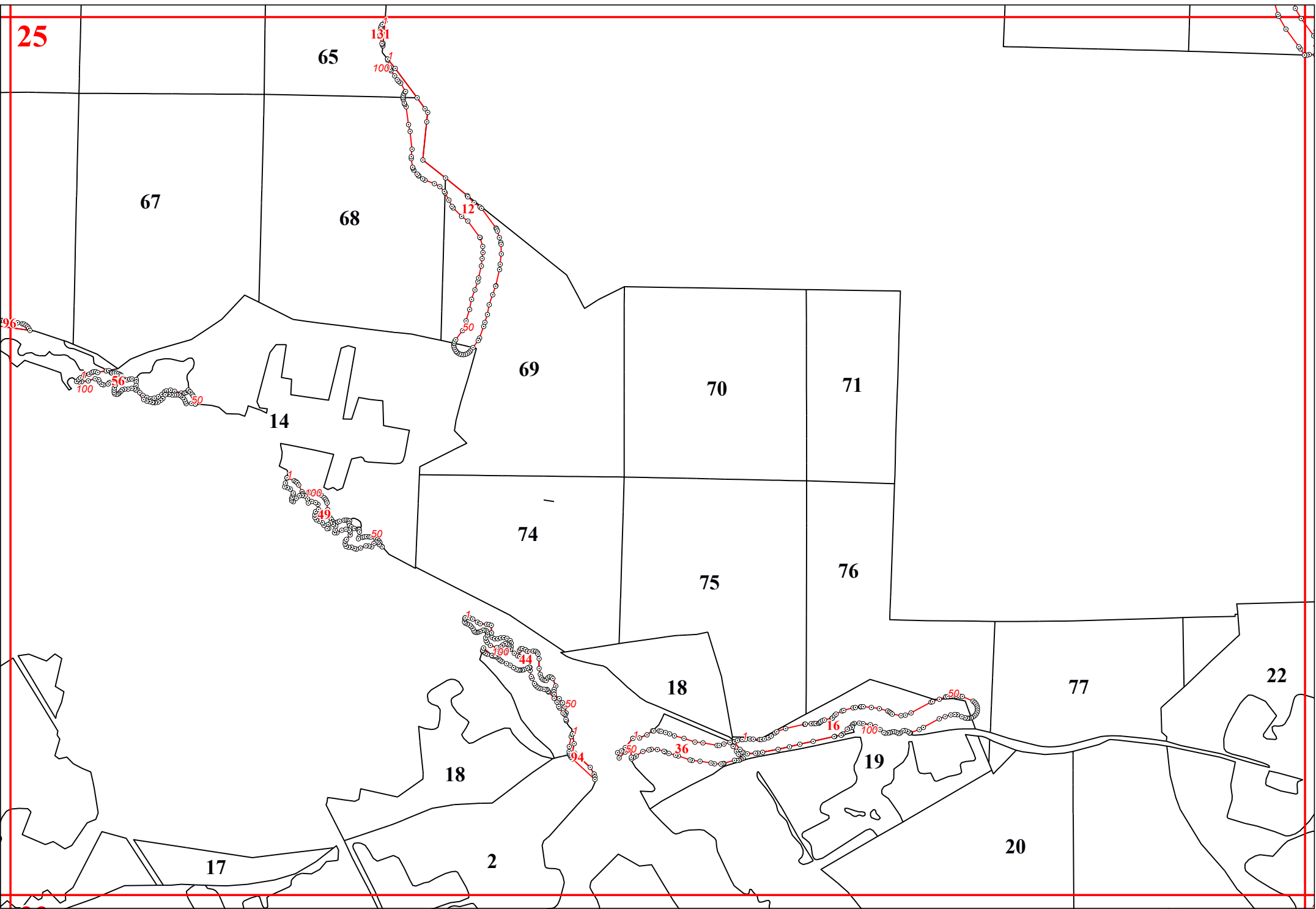
121

65

79

58





26

72

130

72

73

79

80

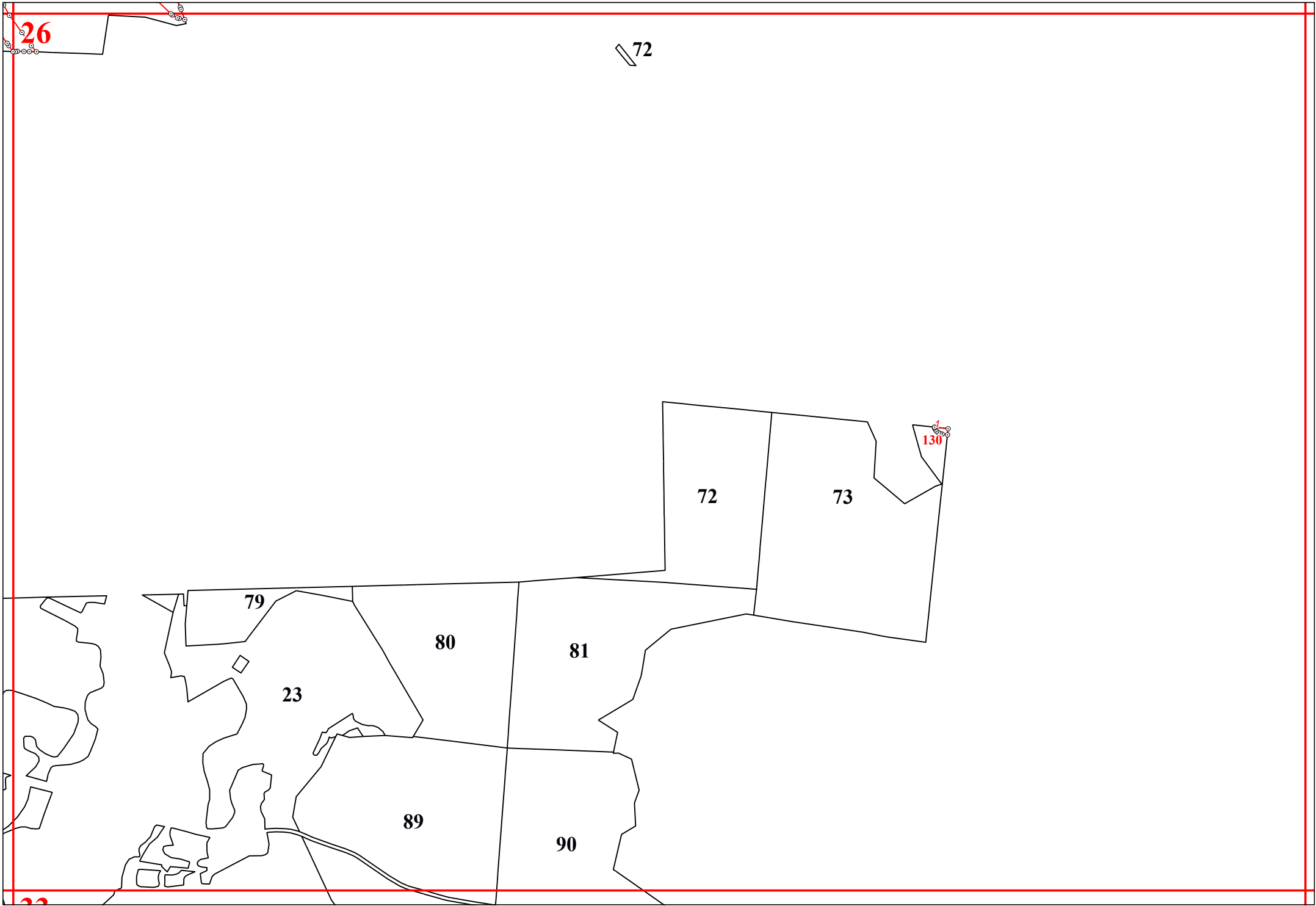
81

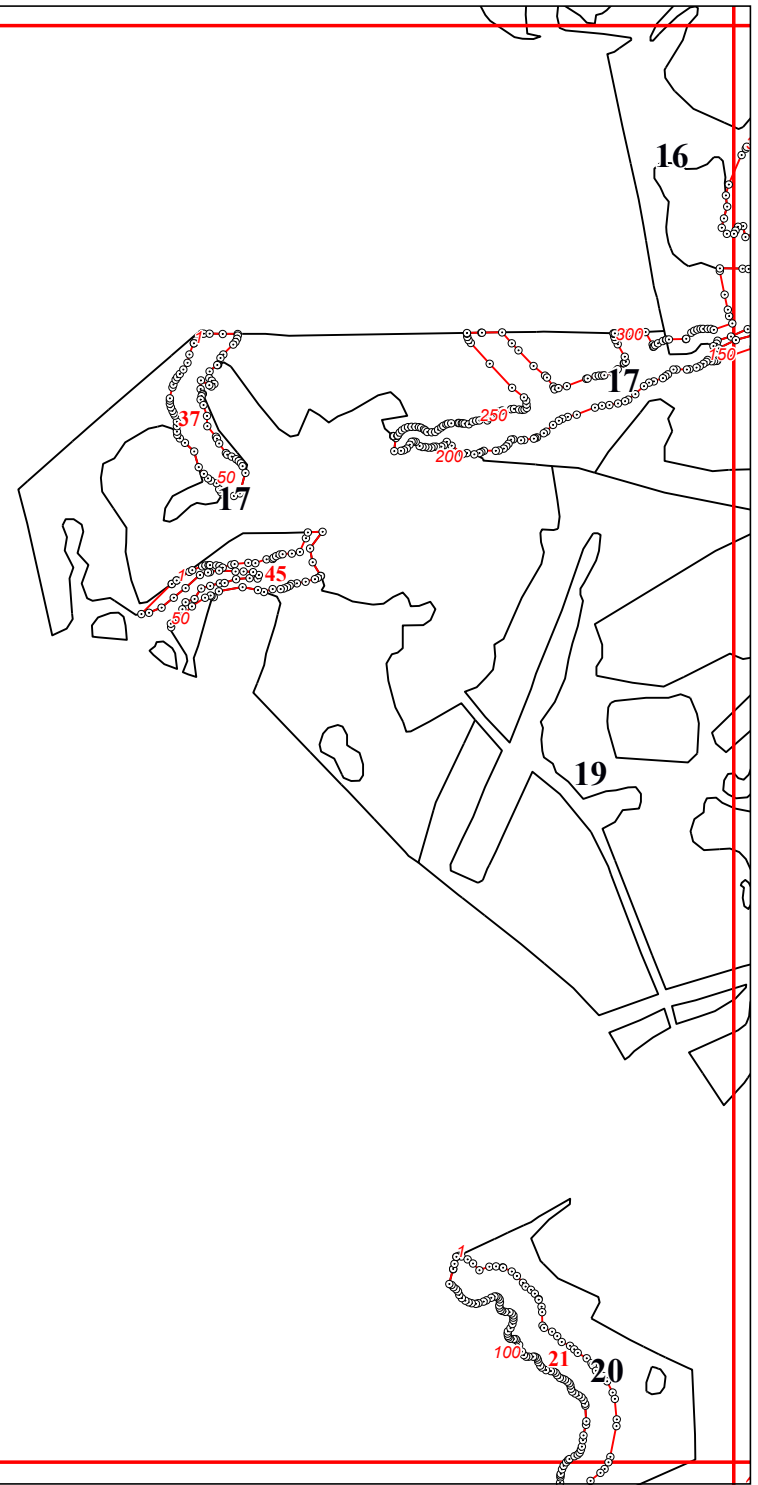
23

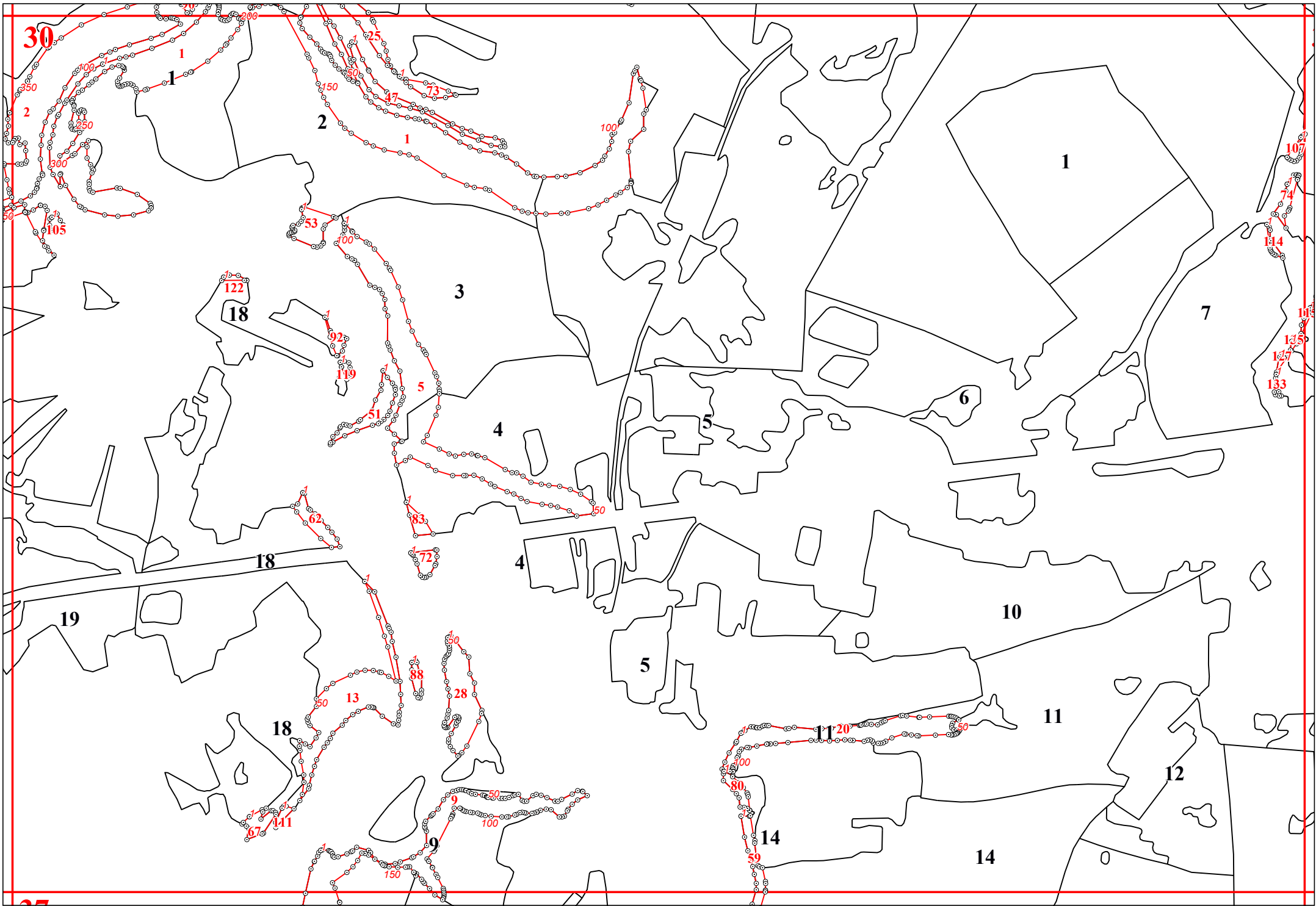
89

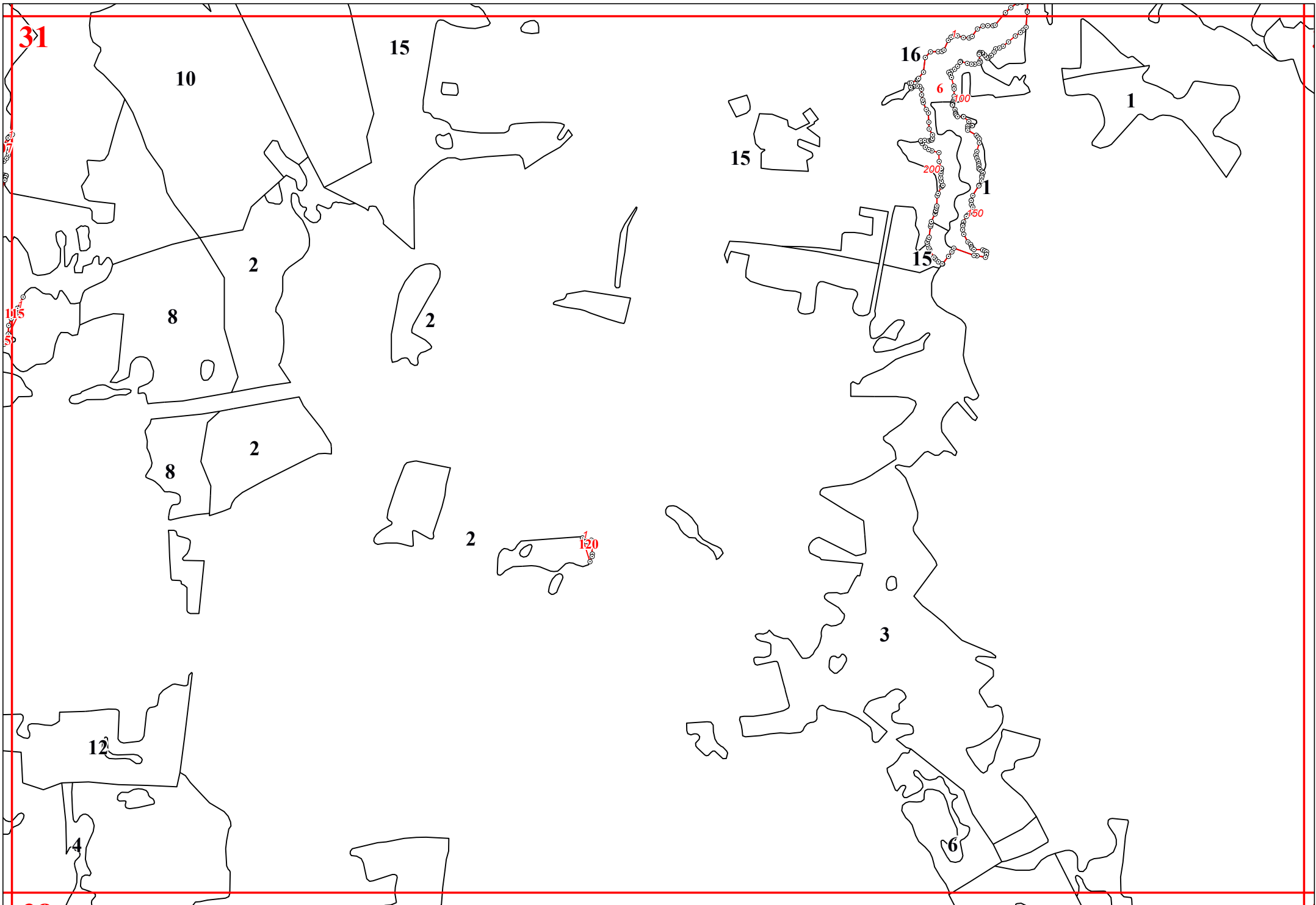
90

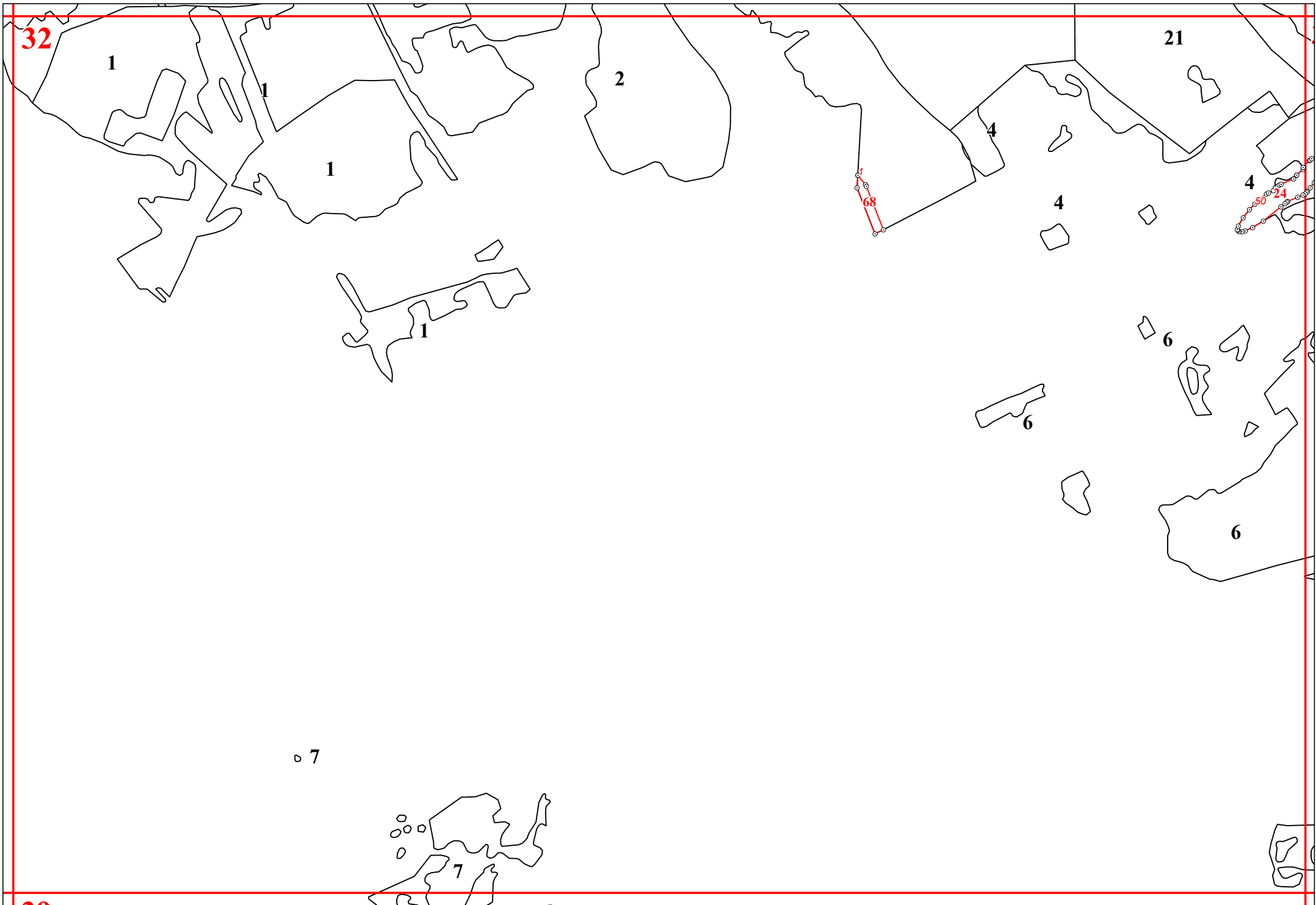
22

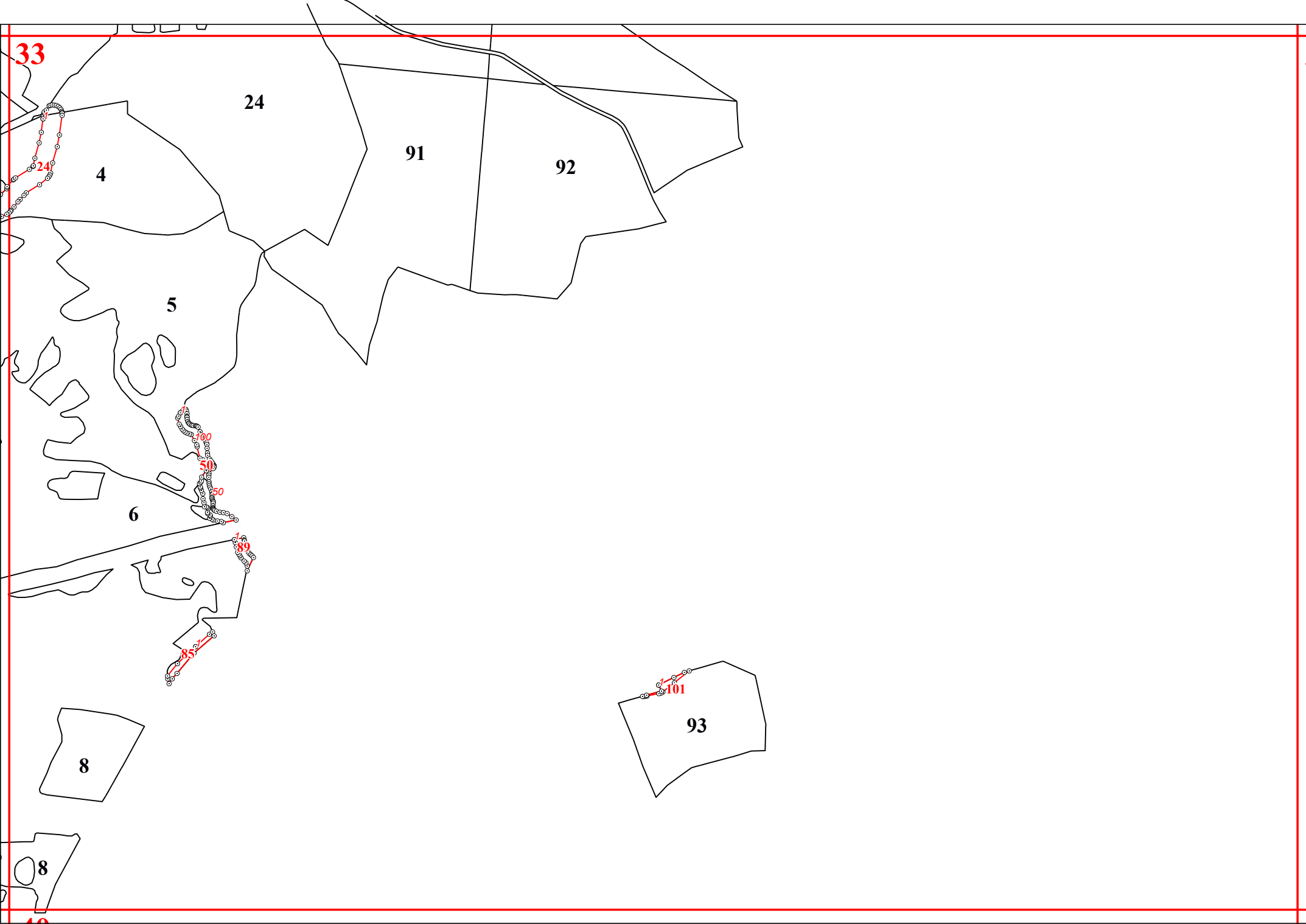


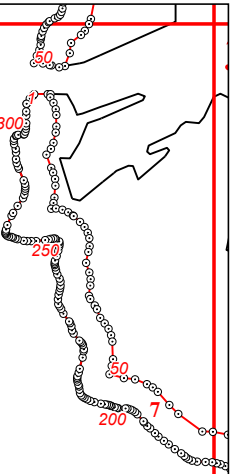


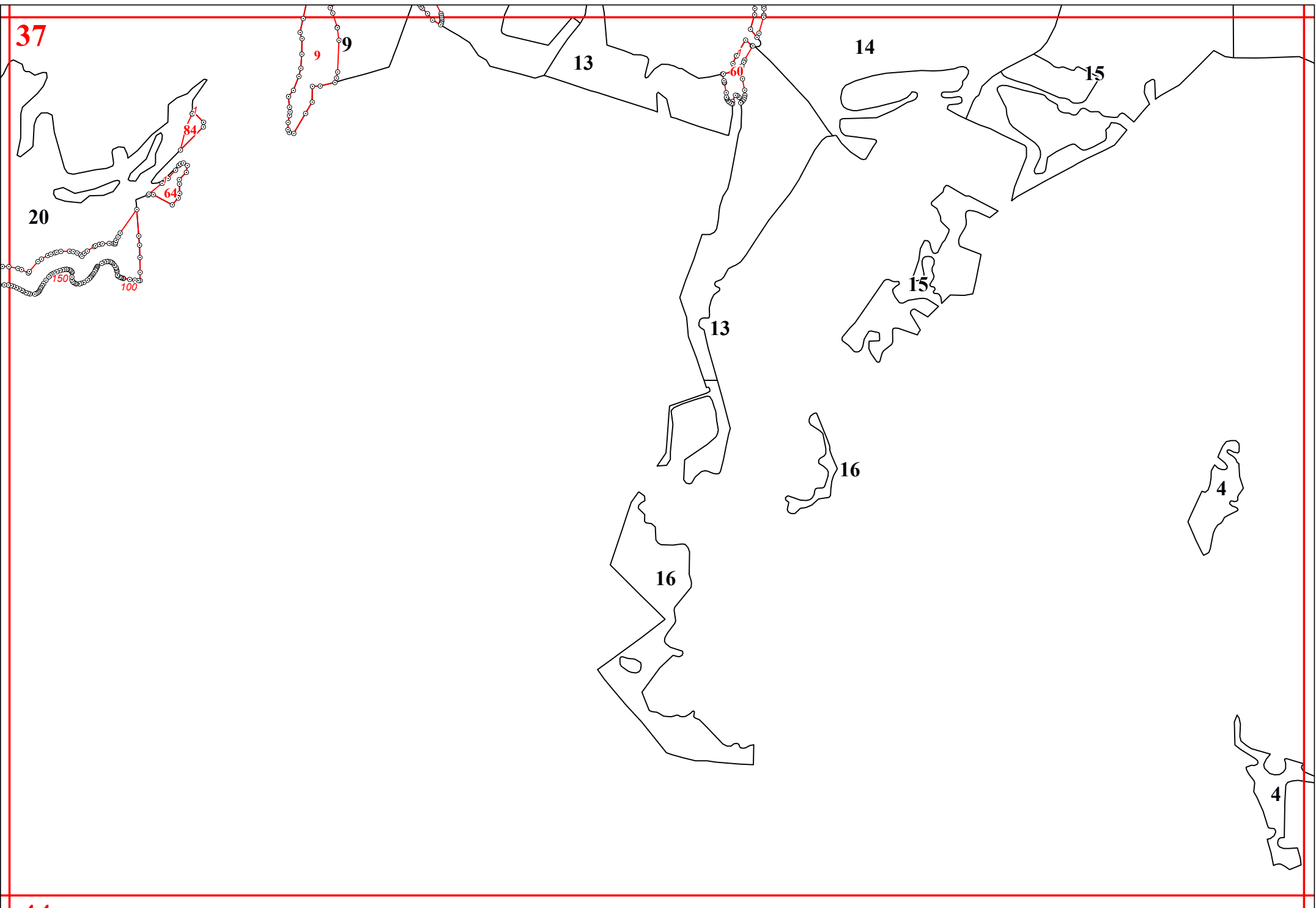




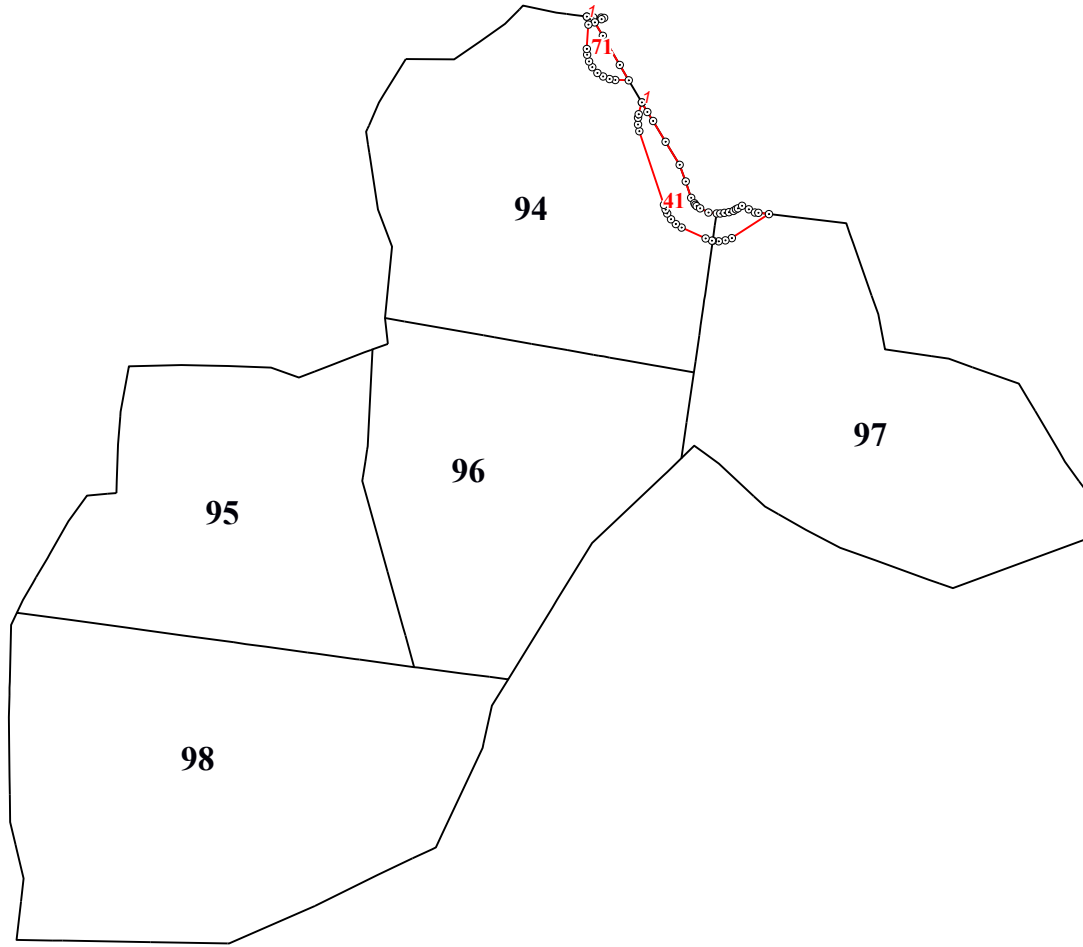












45

140 4

