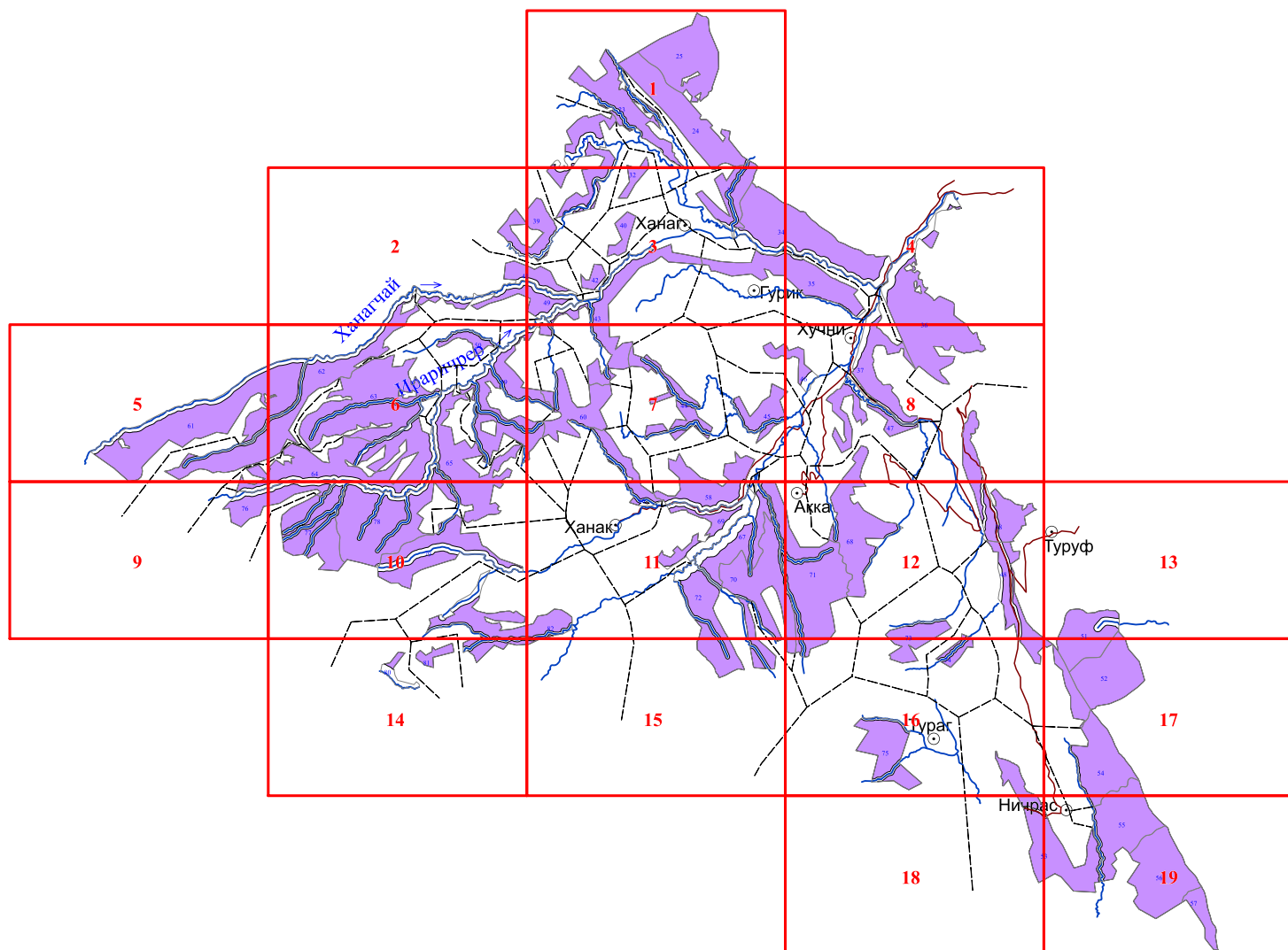


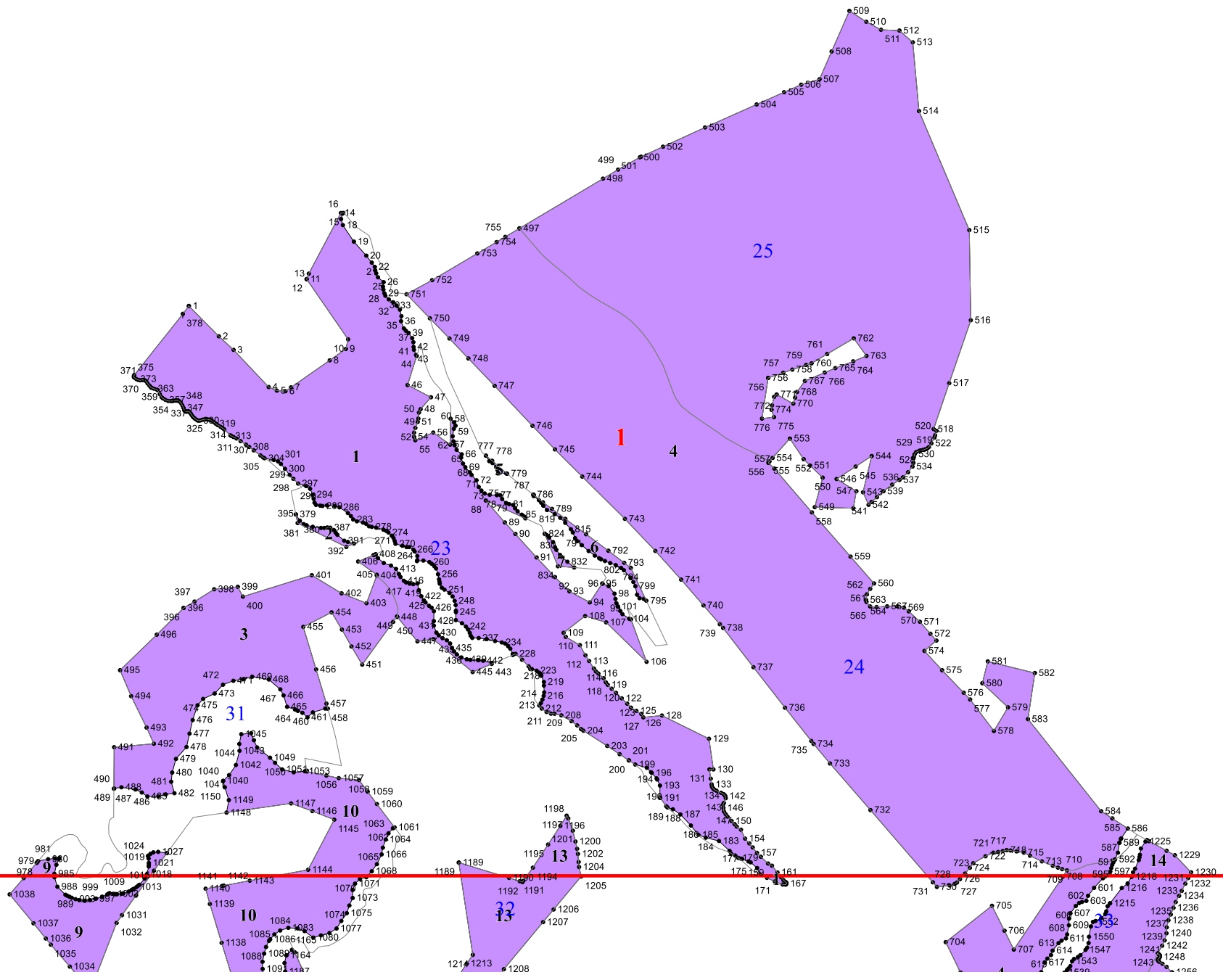
**Графическое описание местоположения границ земель,
на которых располагаются ценные леса (горные леса),
на территории Хурикского участкового лесничества
Табасаранского лесничества Республики Дагестан**

Приложение № 20 к приказу Рослесхоза
от 27.02.2023 № 216

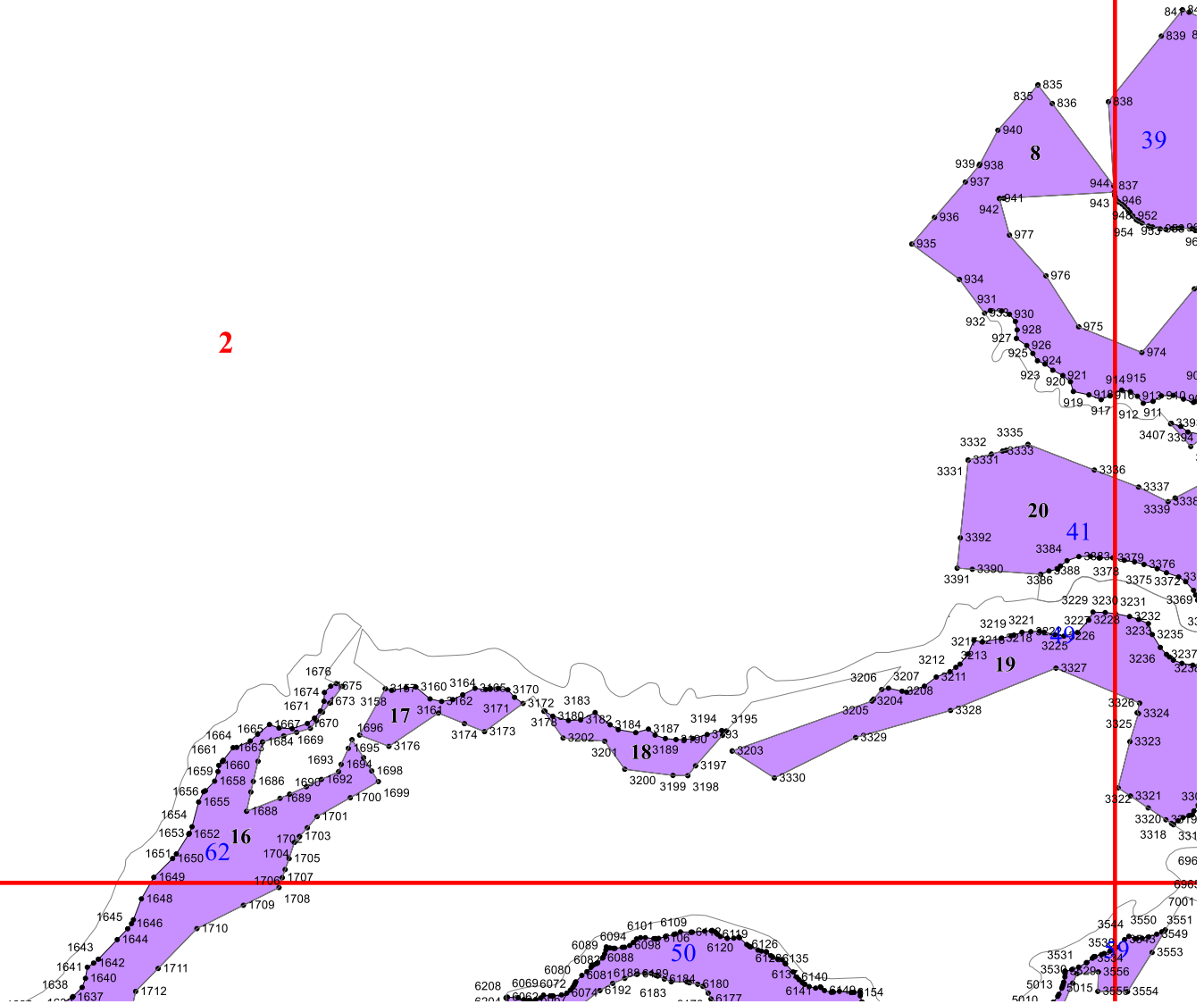


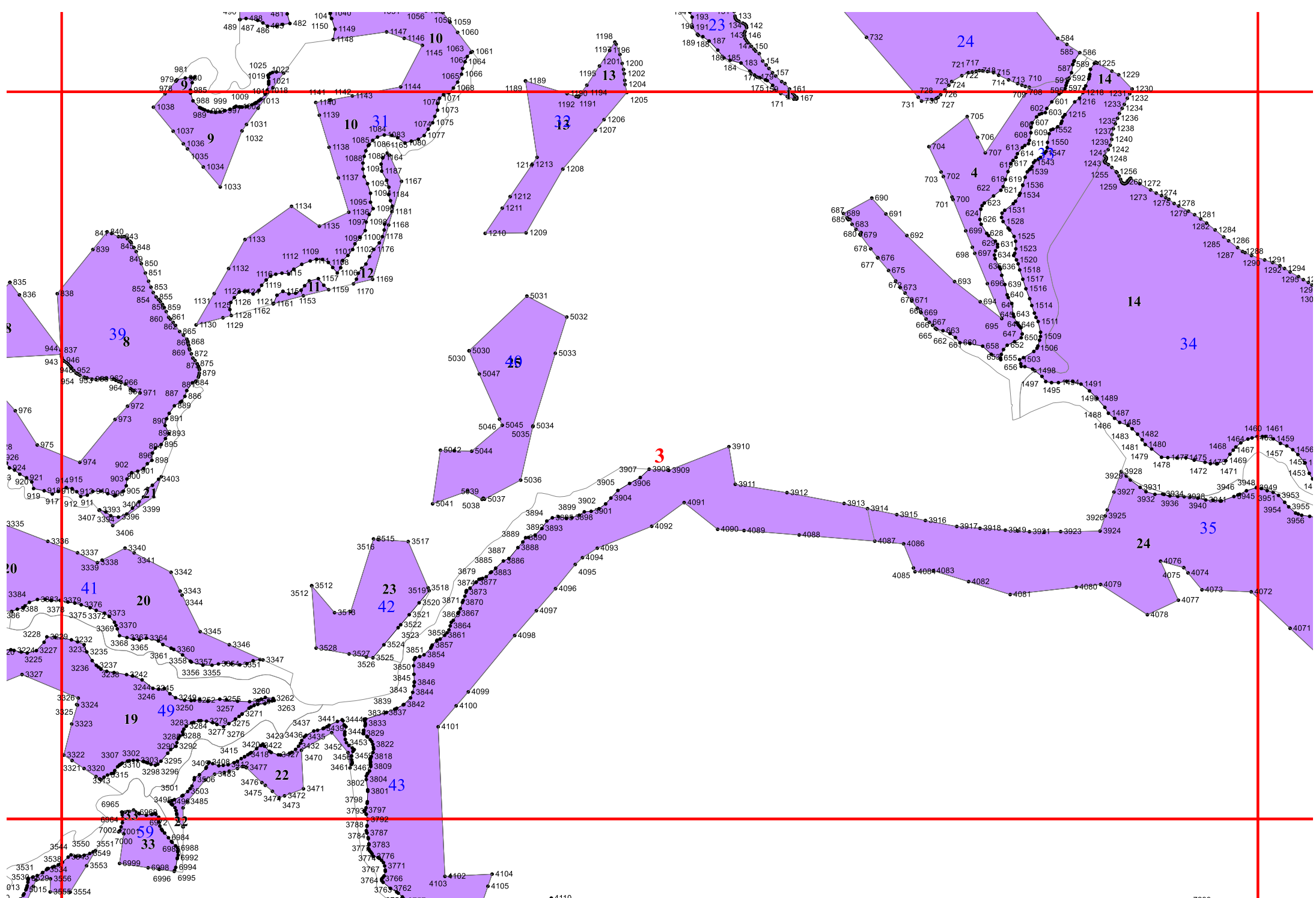
Условные обозначения:

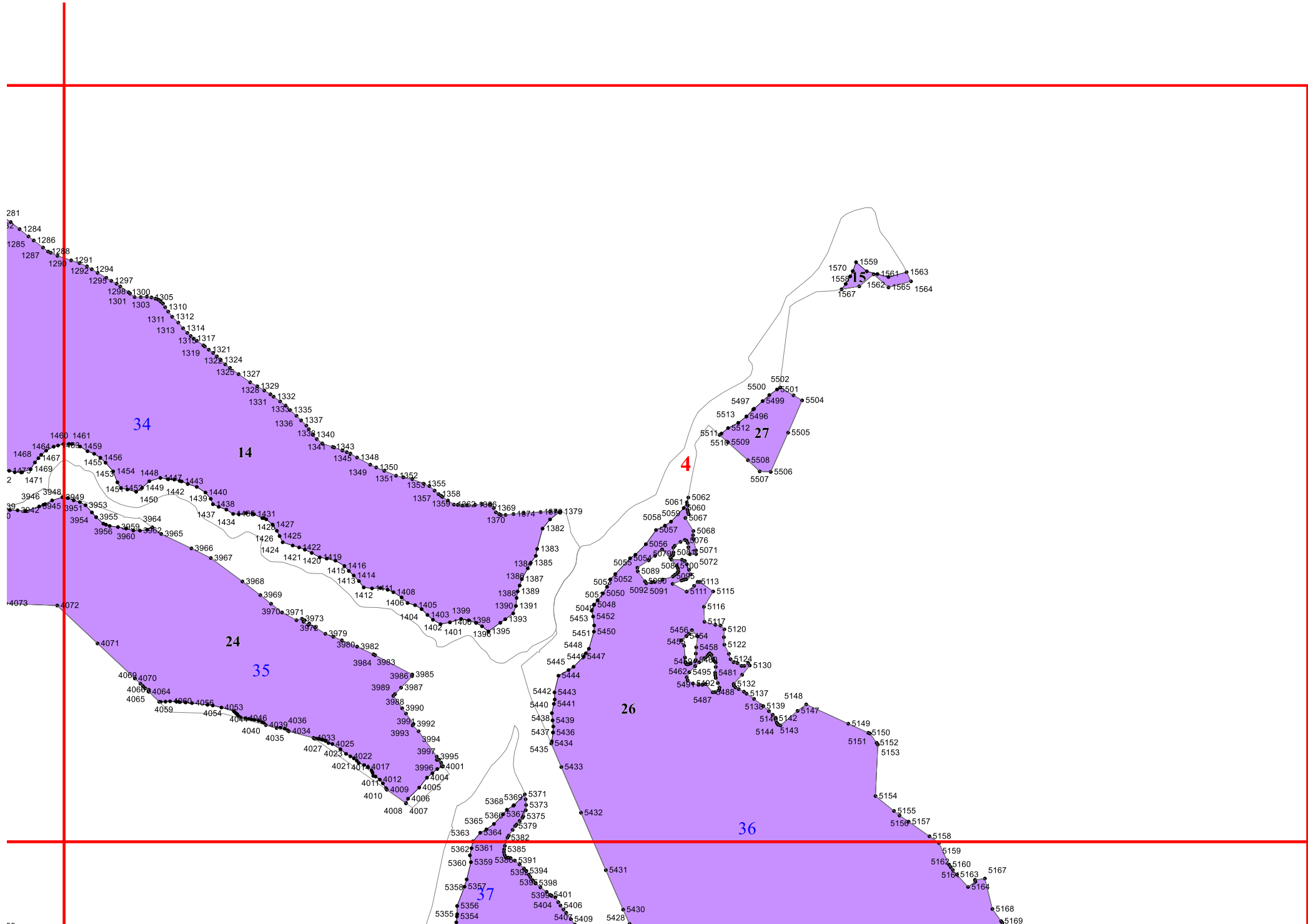
- 3 - лесной квартал
- 3 - лист форматки
- - населенные пункты
- - реки
- - дороги
- горные леса

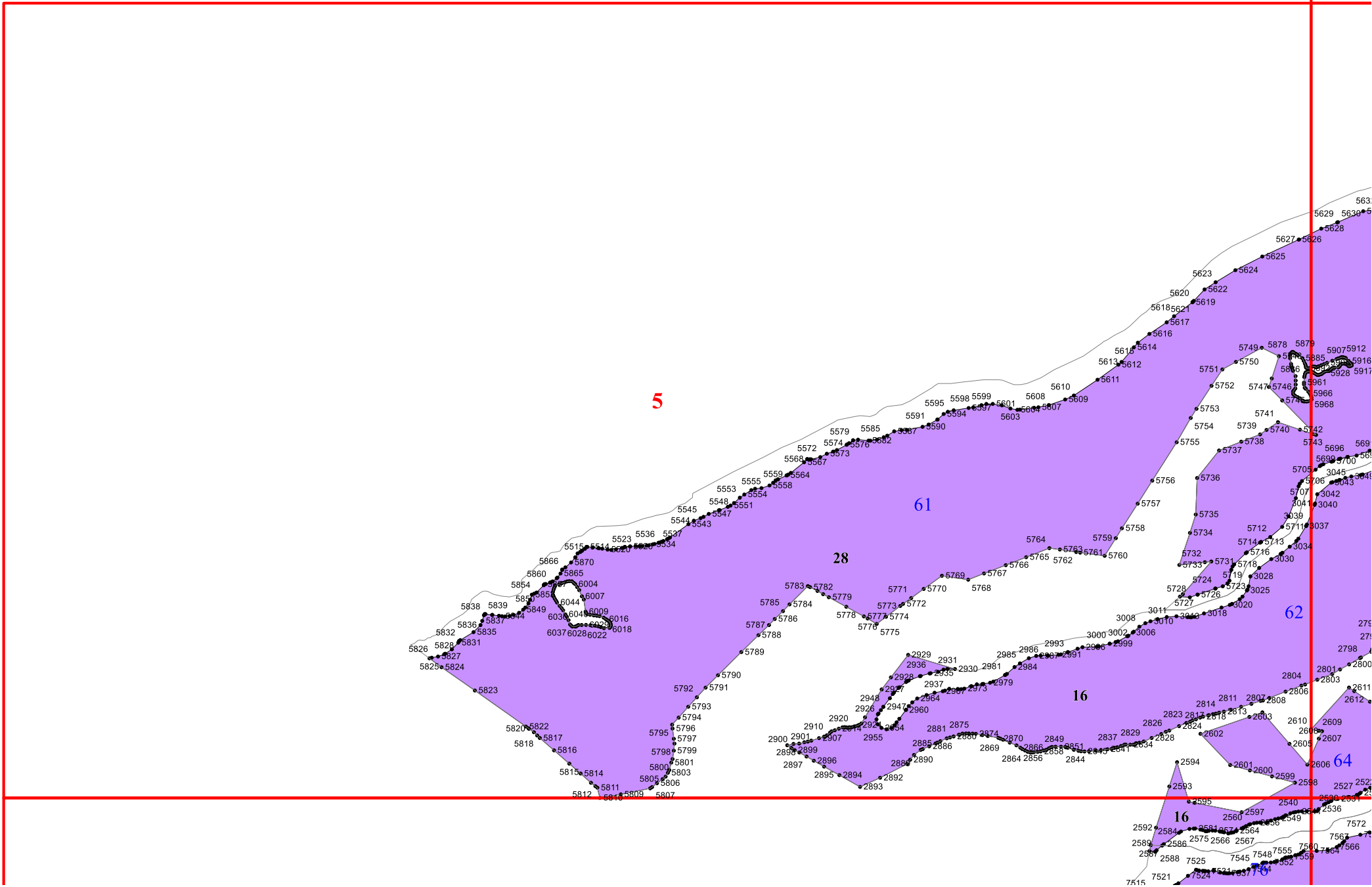


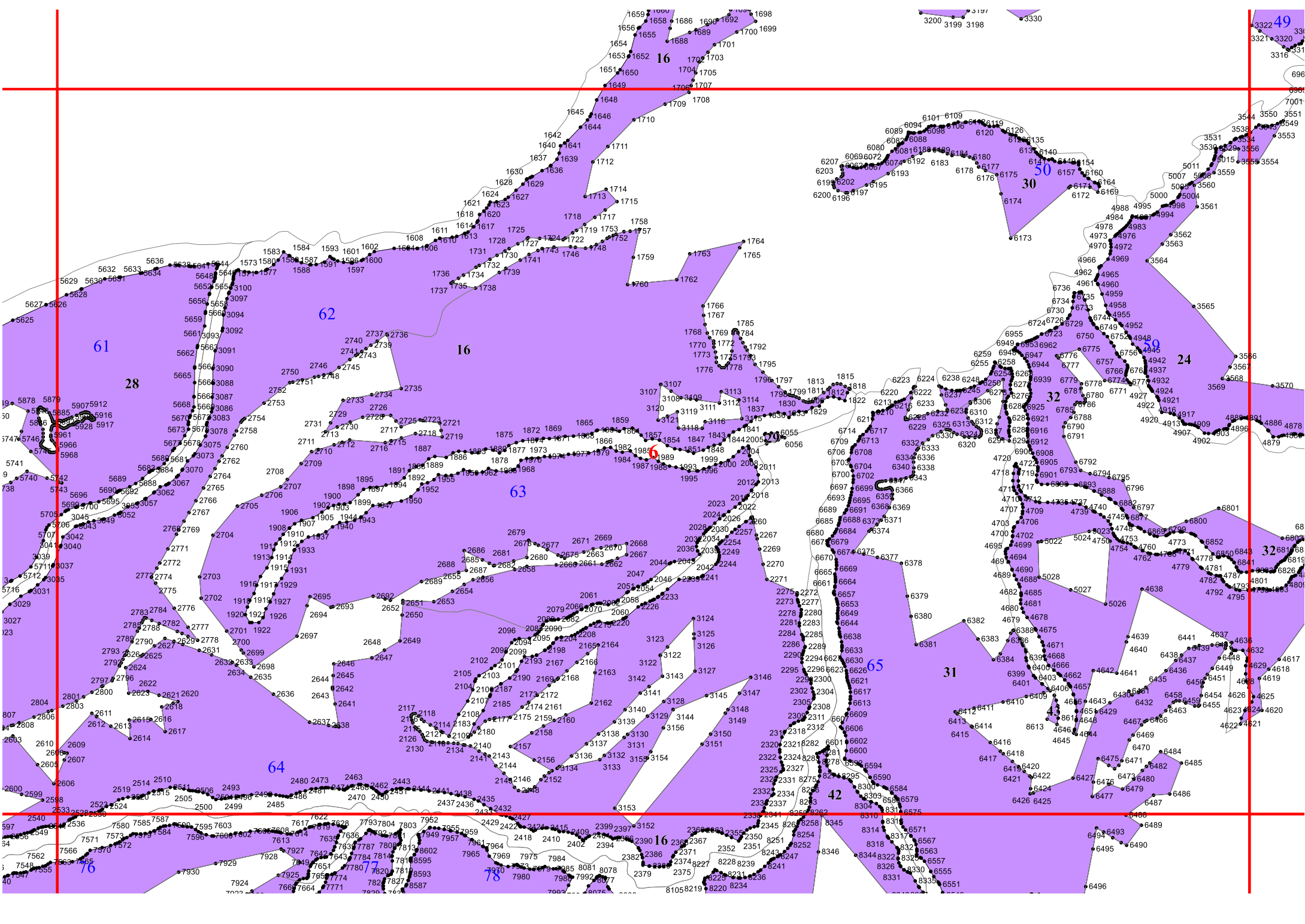
2

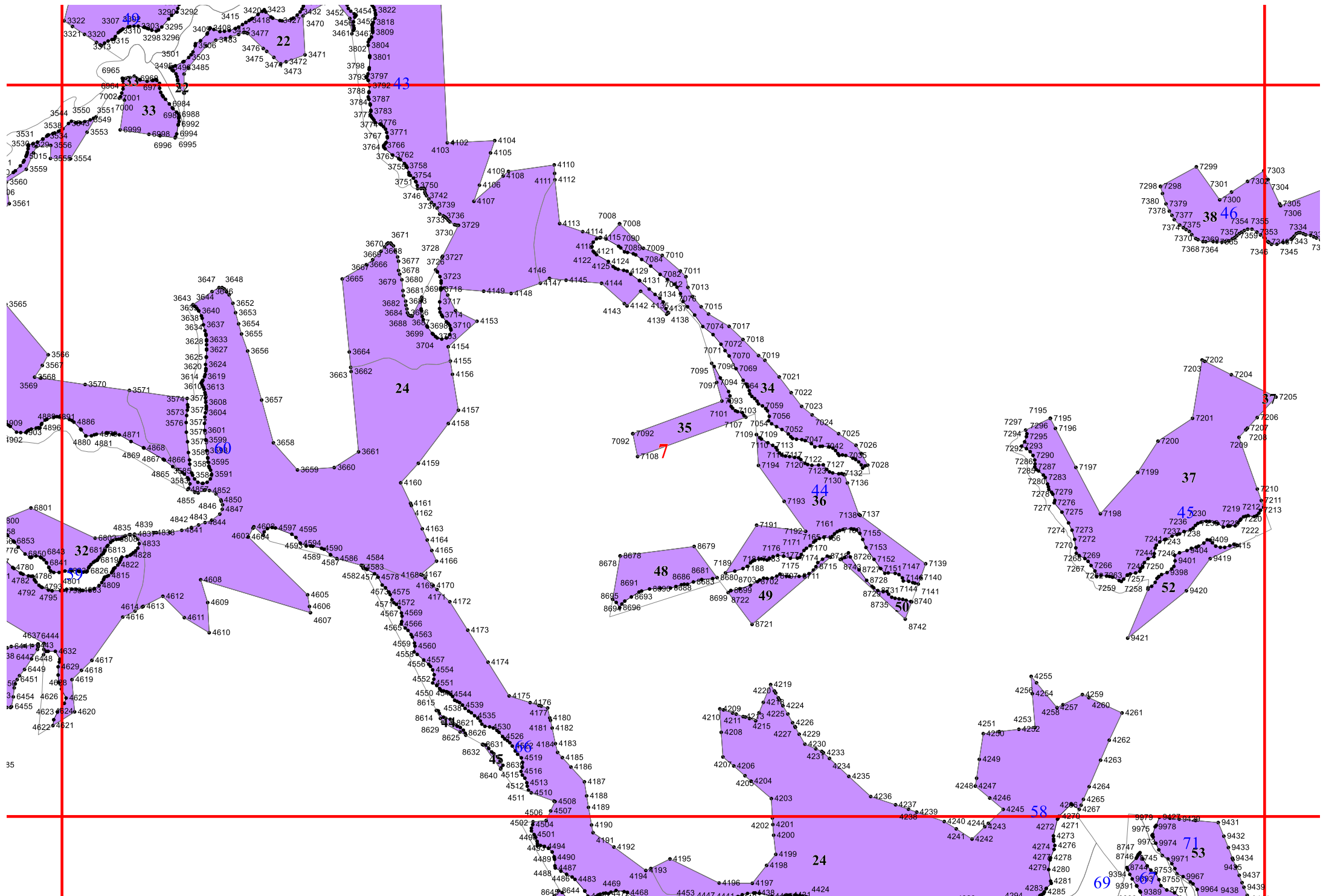


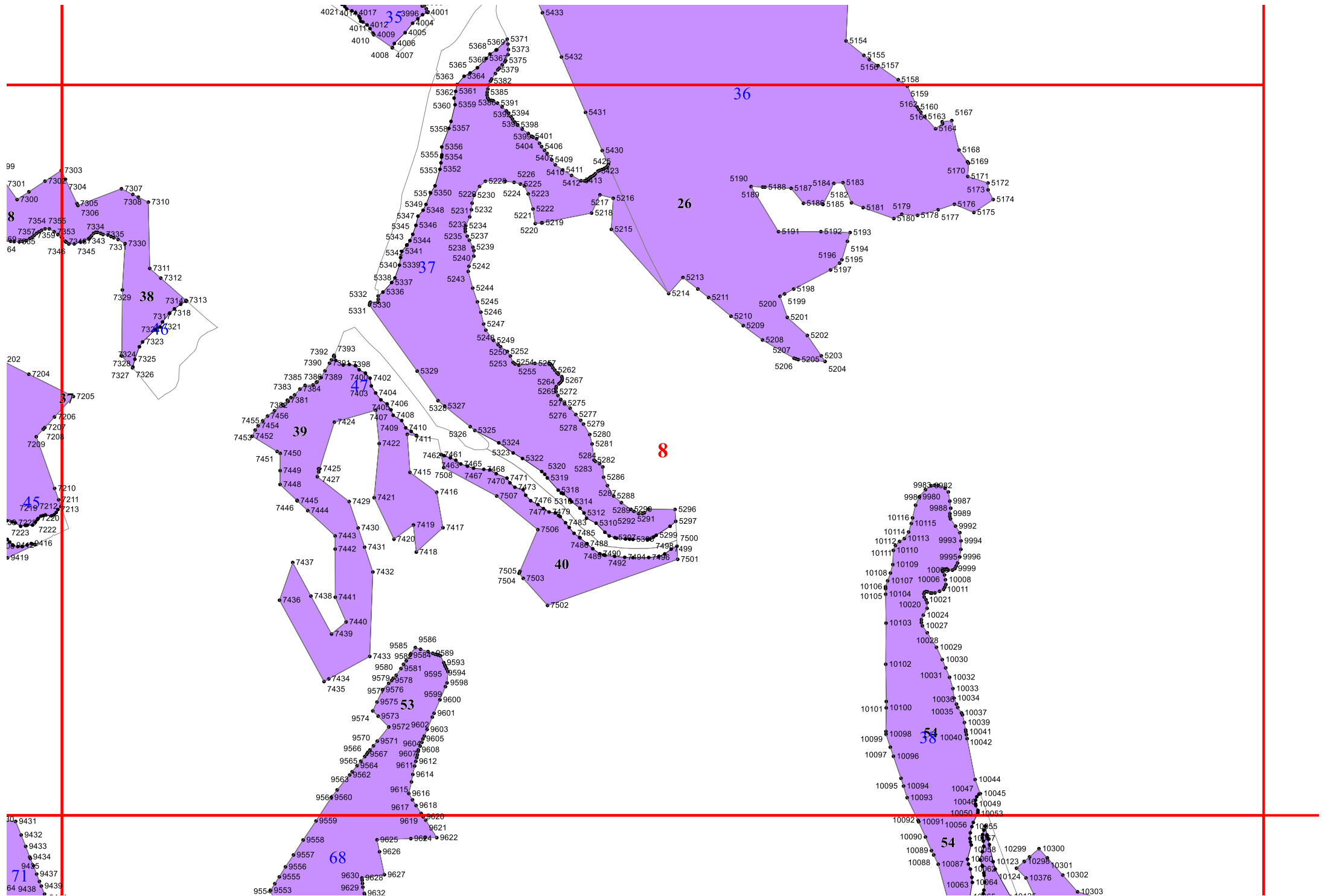


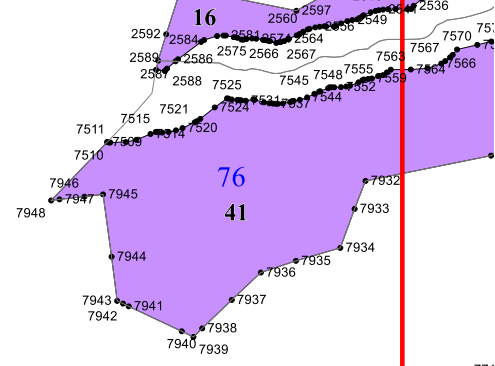
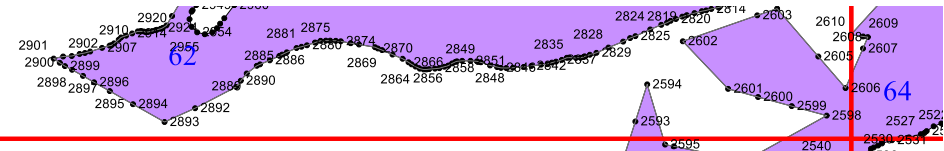
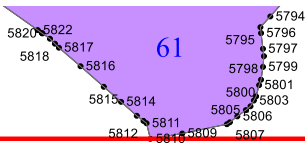






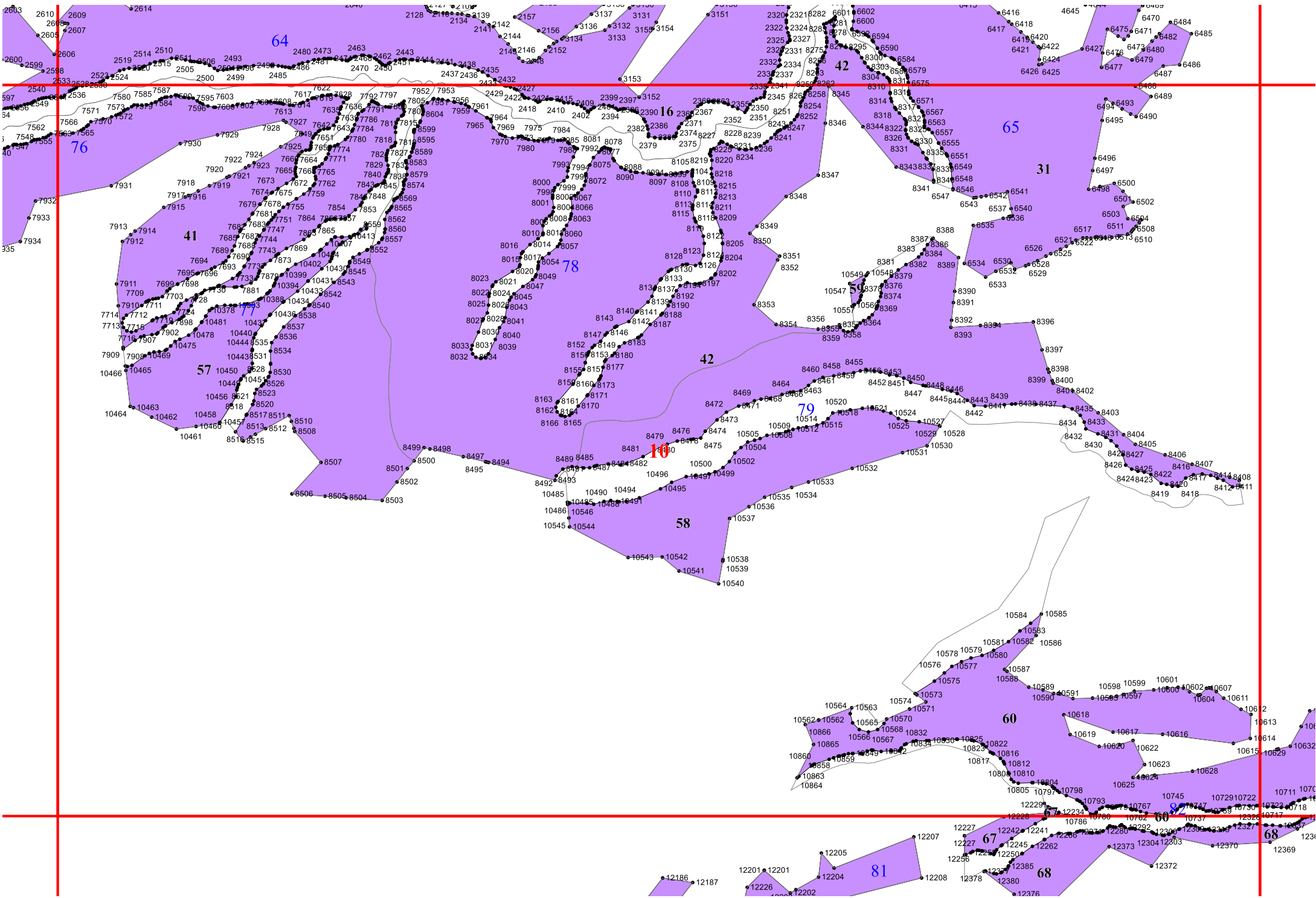


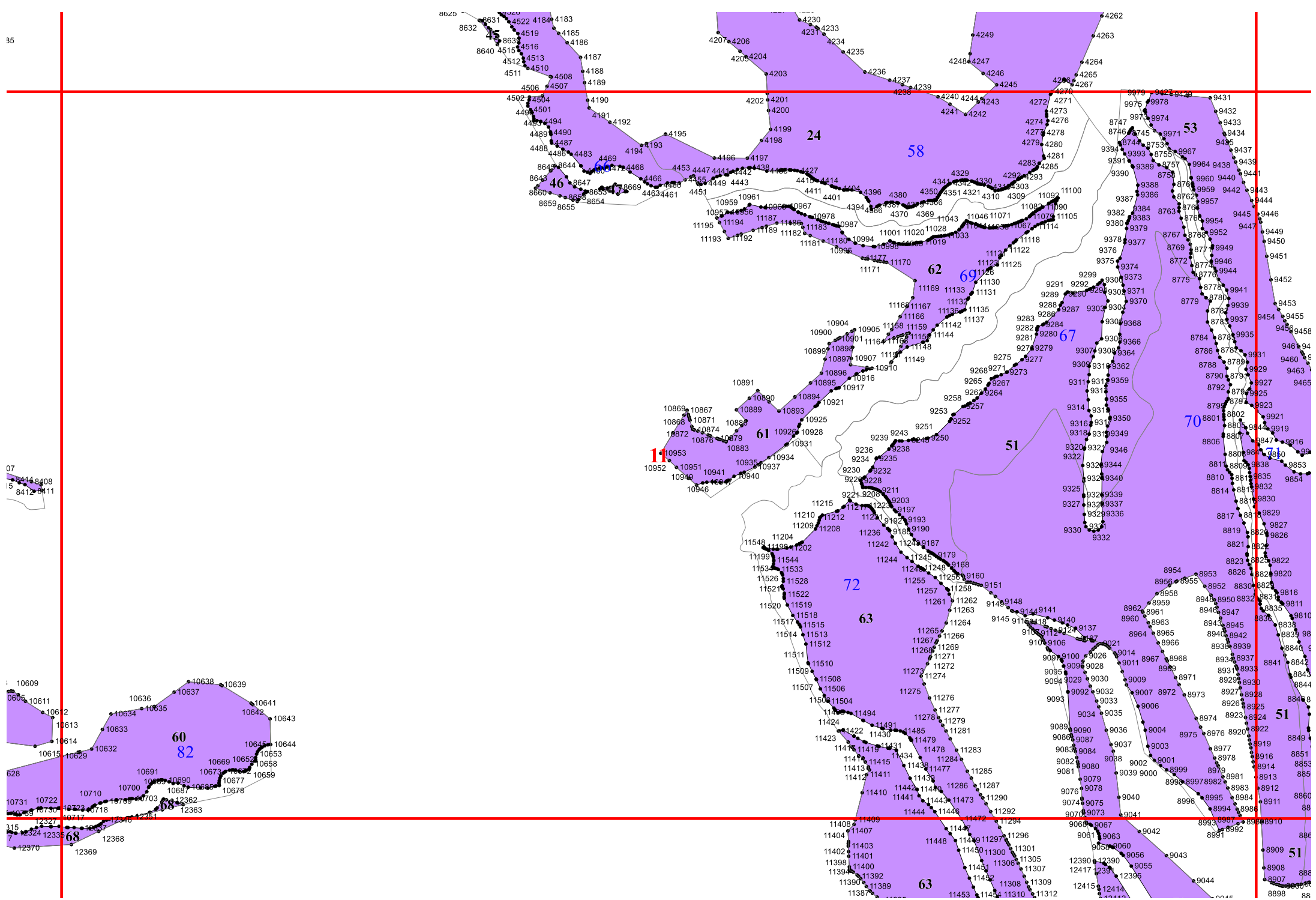




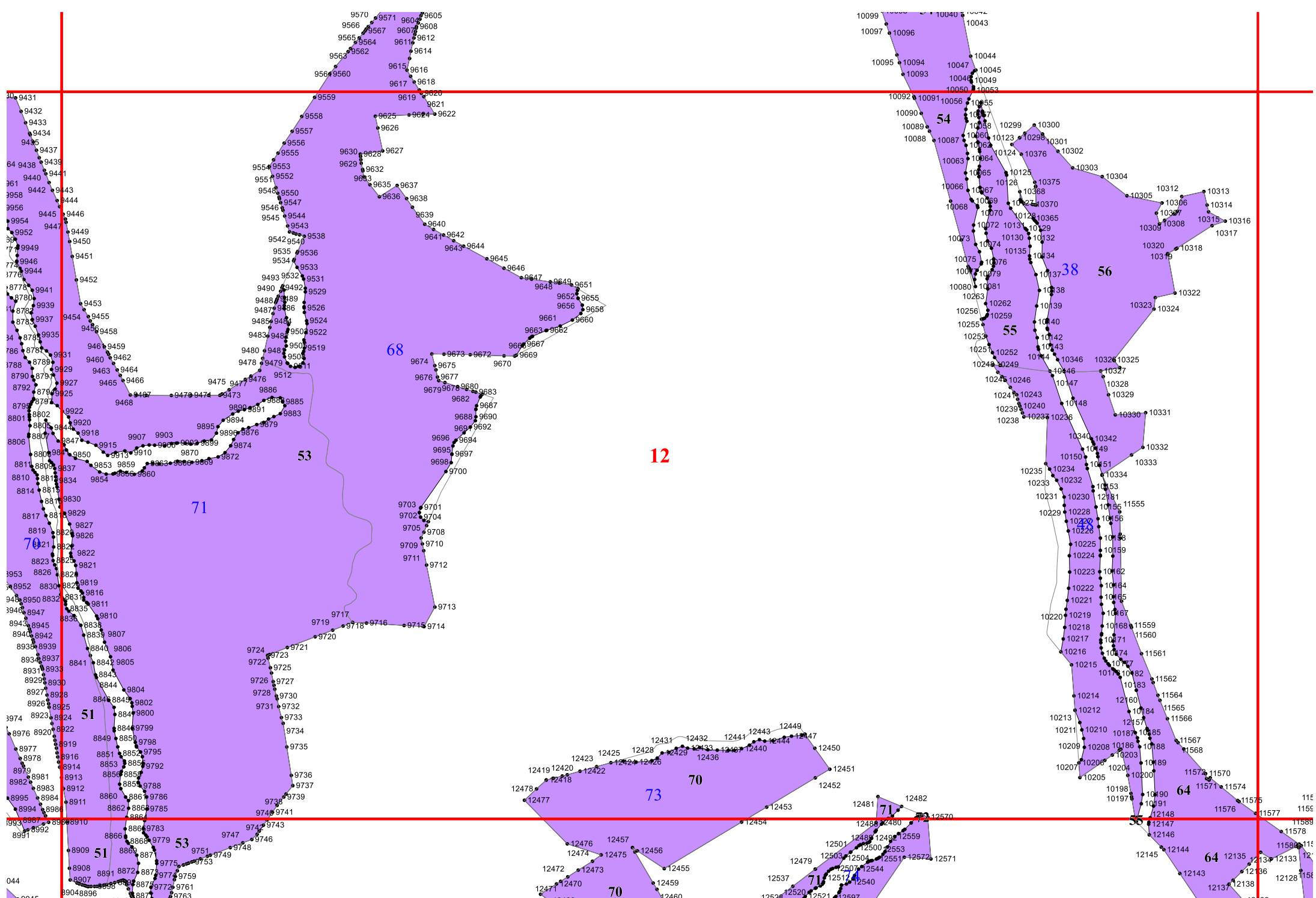
9

771
77
79C
104

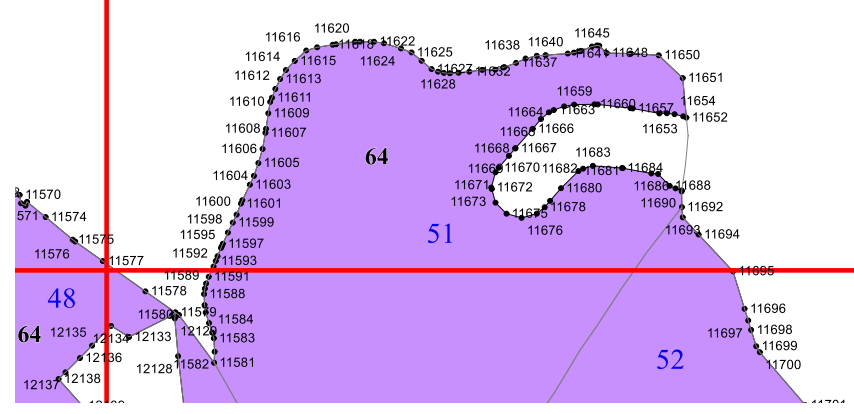


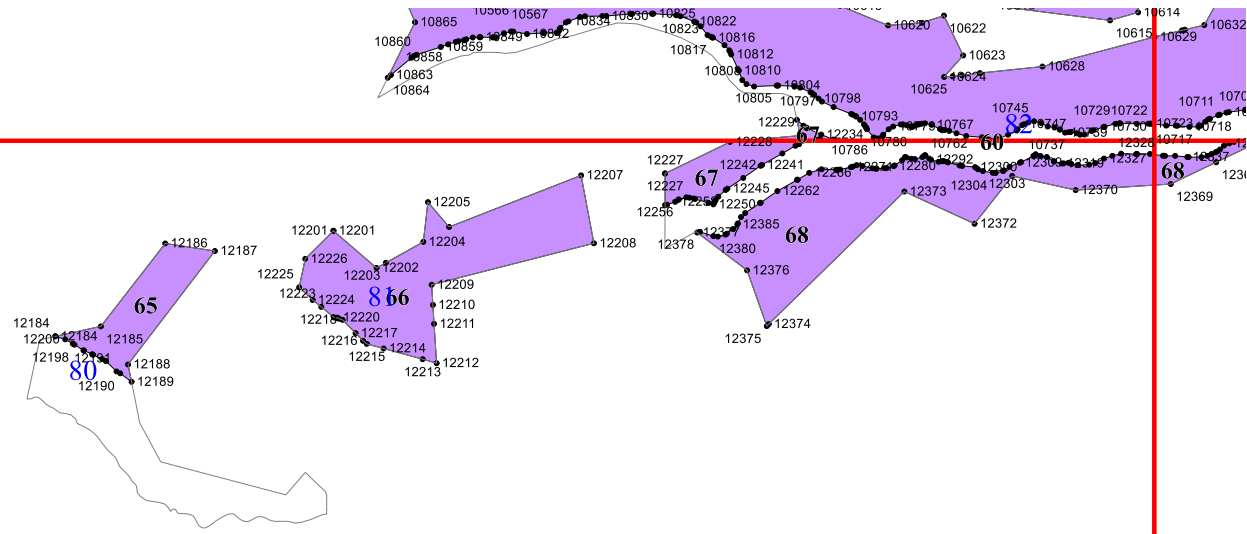


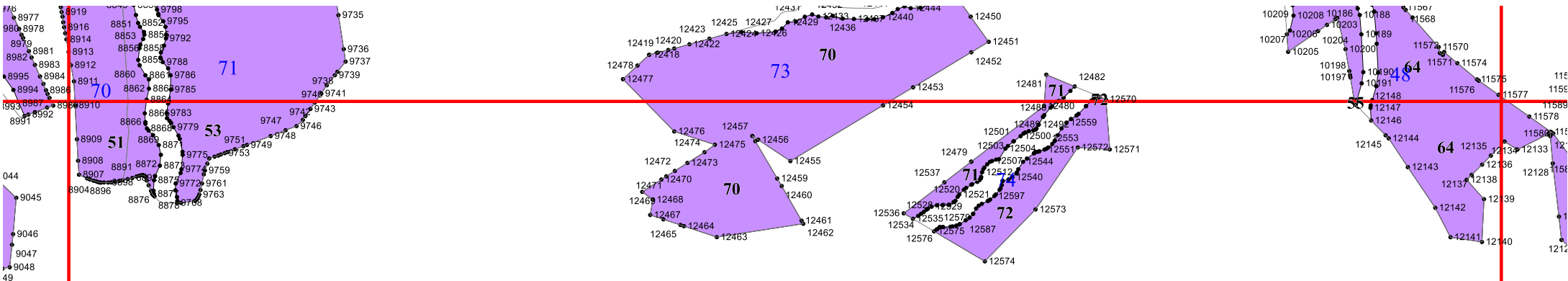
07
14 8408
15 8412 8411



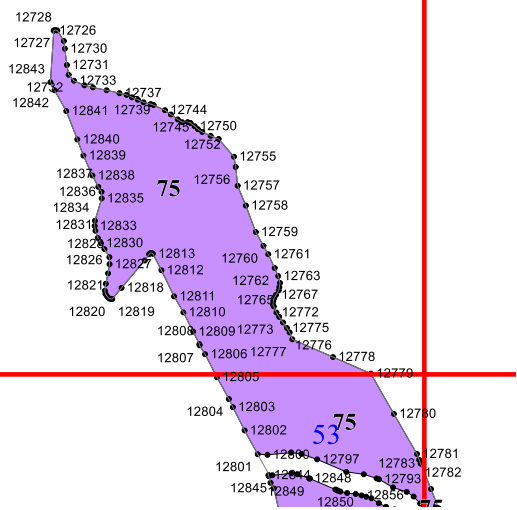
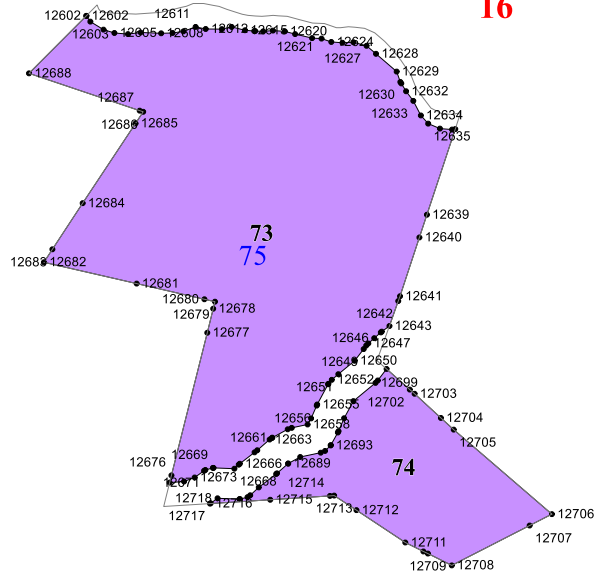
10313
10314
10315
10316
10317

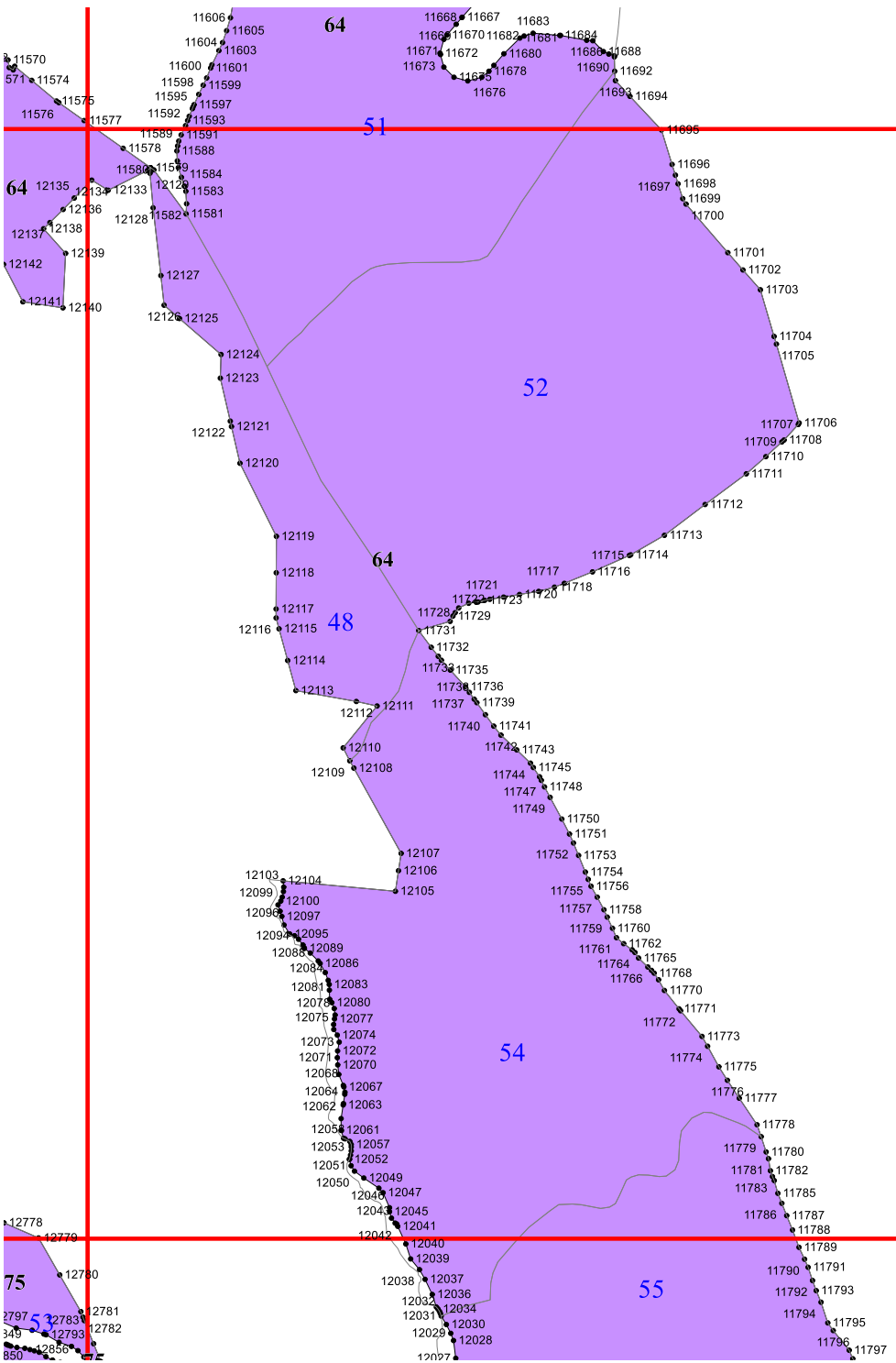




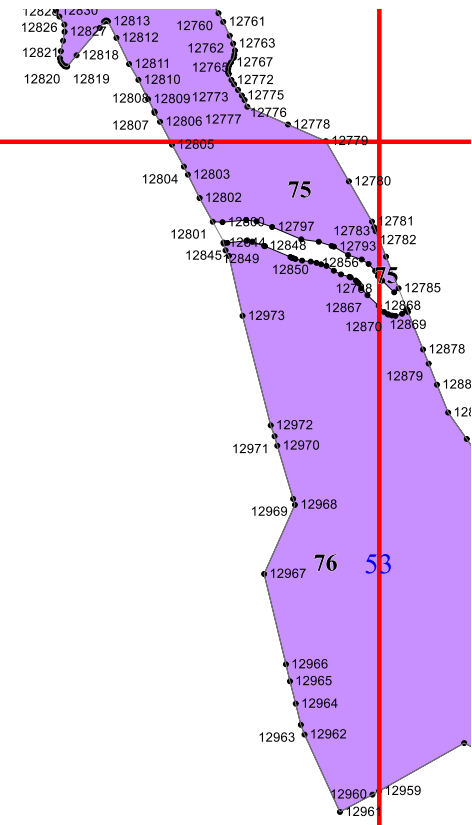
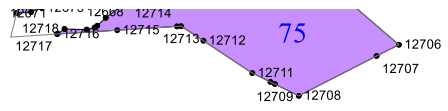


16





17



18

