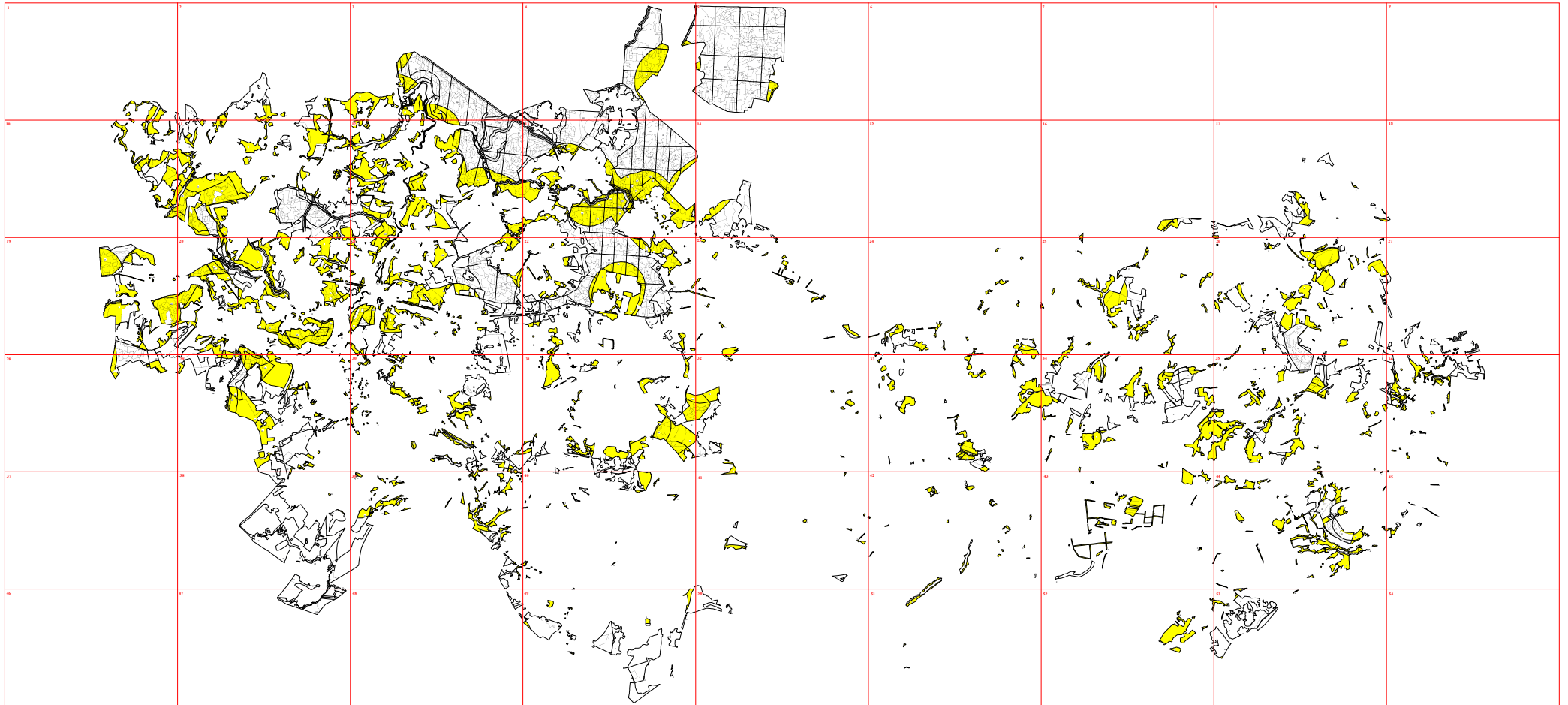
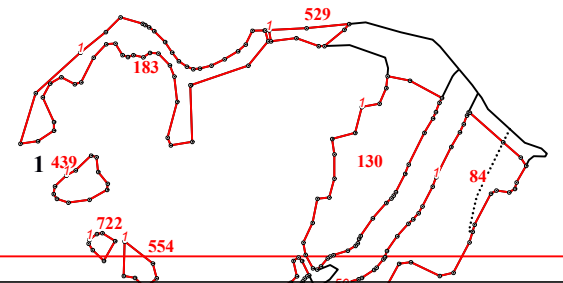


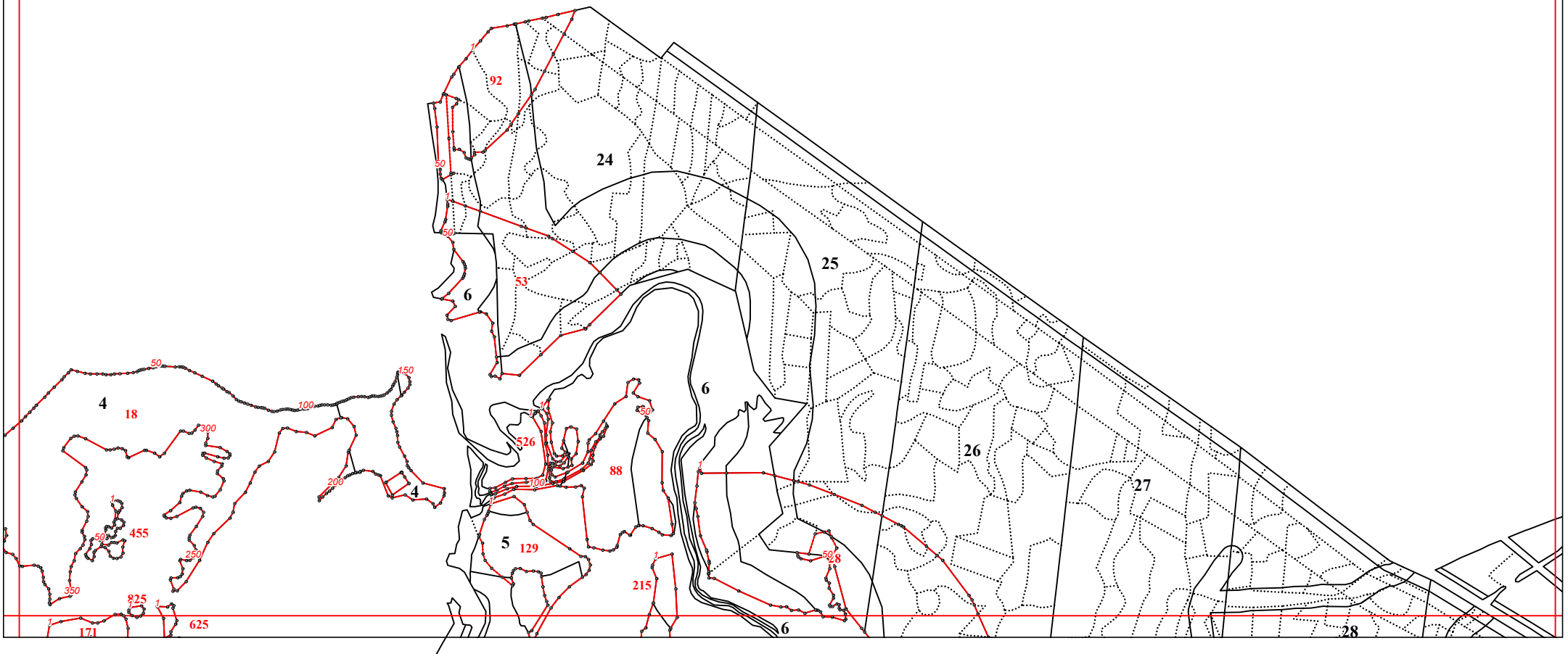
**Графическое описание местоположения границ земель, на которых
располагаются особо защитные участки лесов «участки лесов вокруг сельских
населенных пунктов и садовых товариществ», на территории Мещовского
участкового лесничества Мещовского лесничества Калужской области**

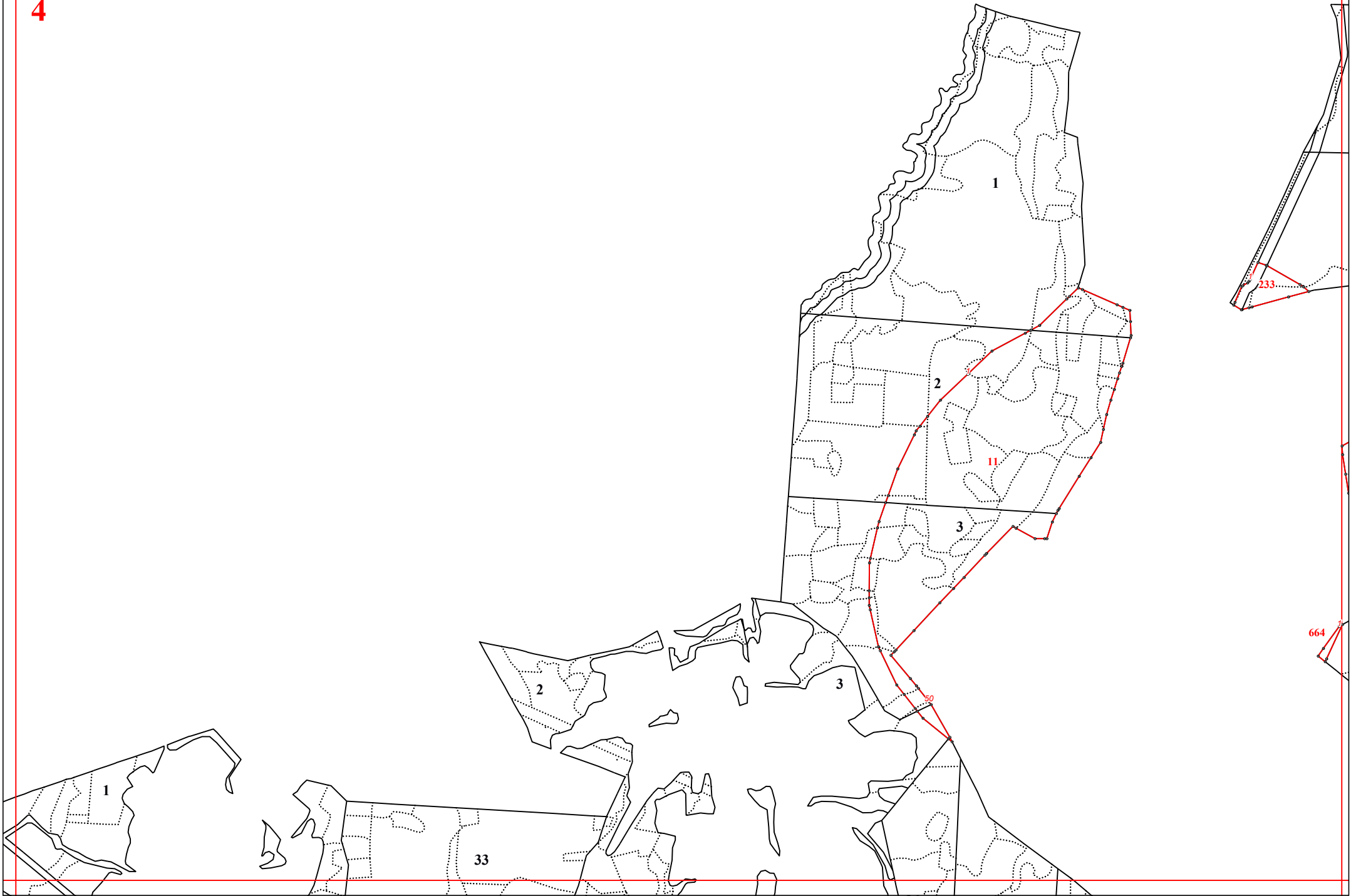


1

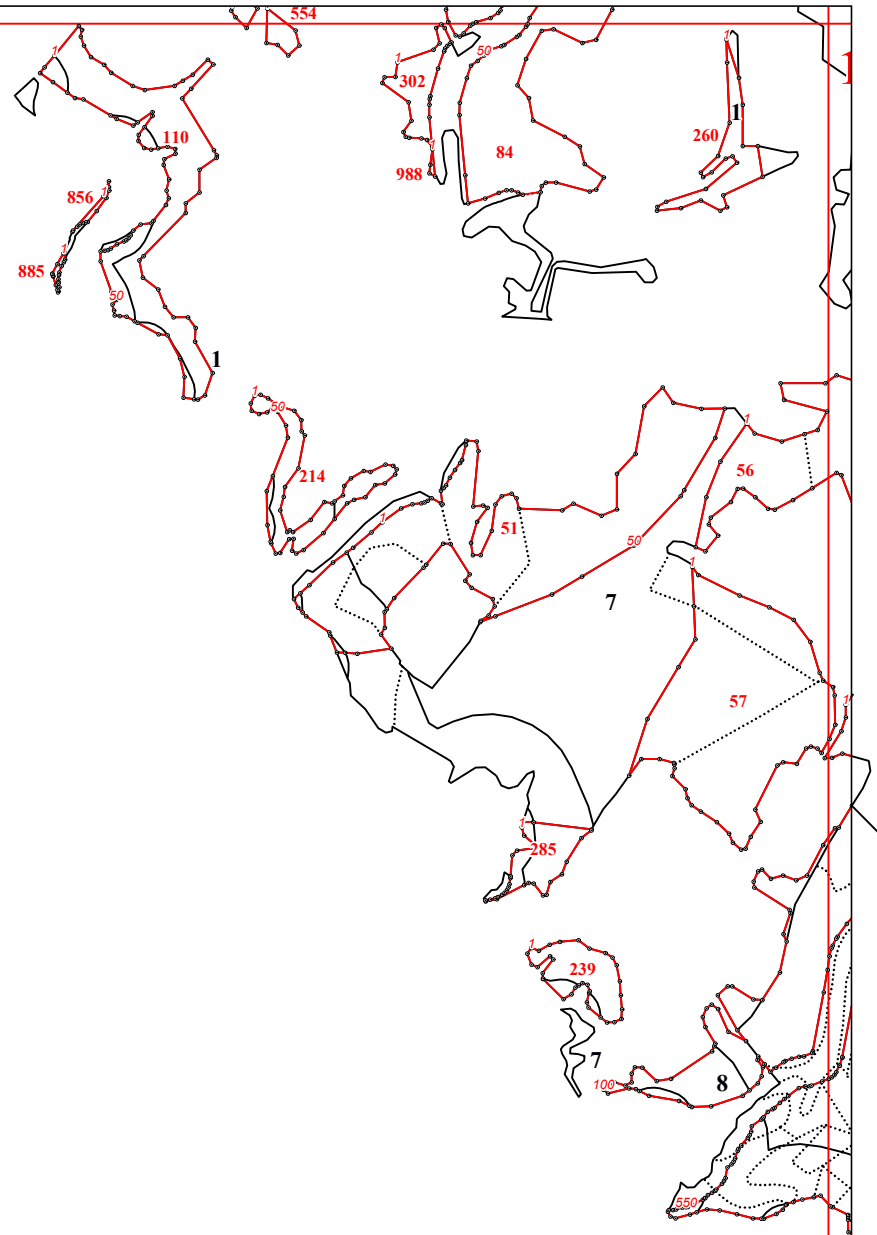


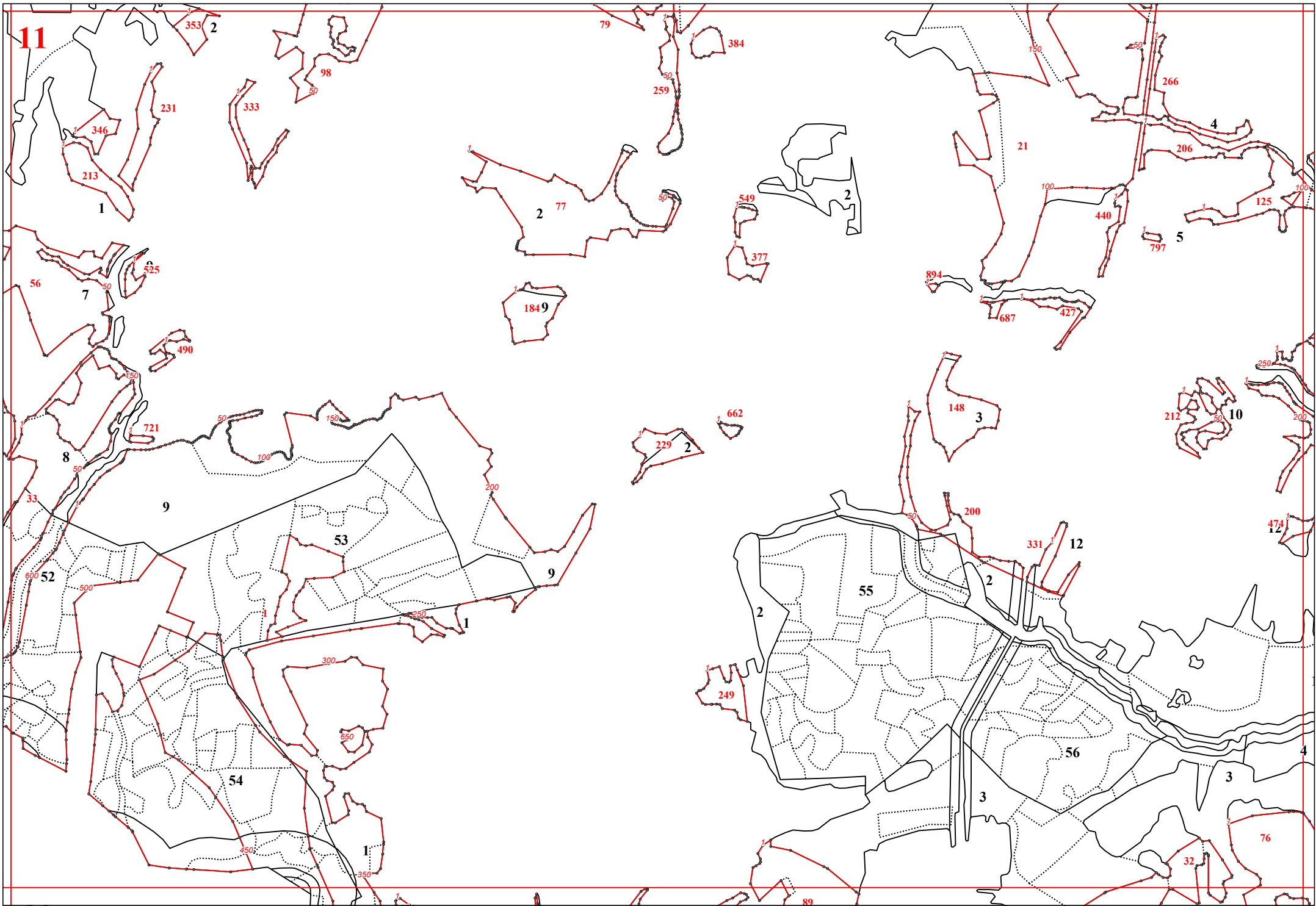


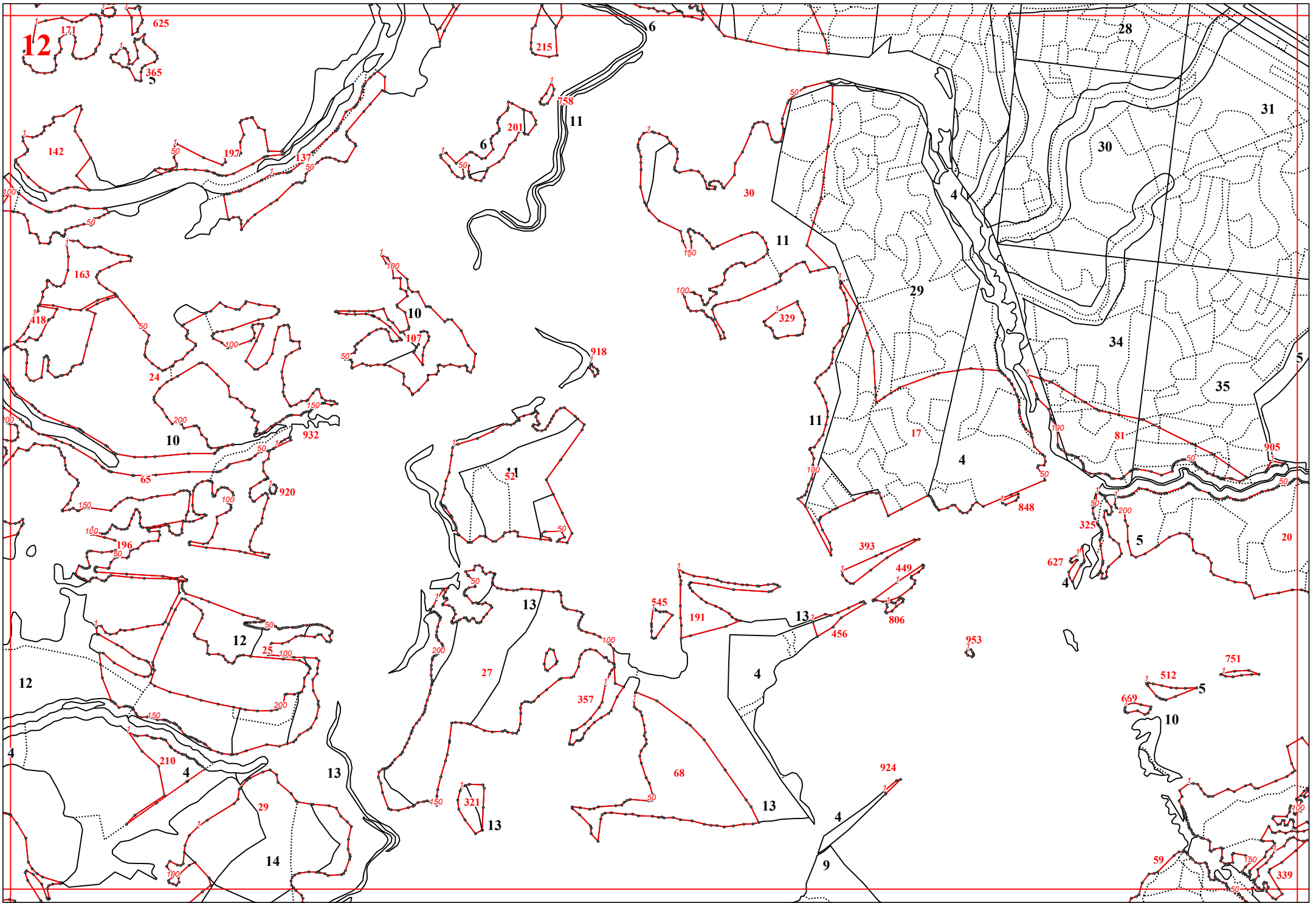


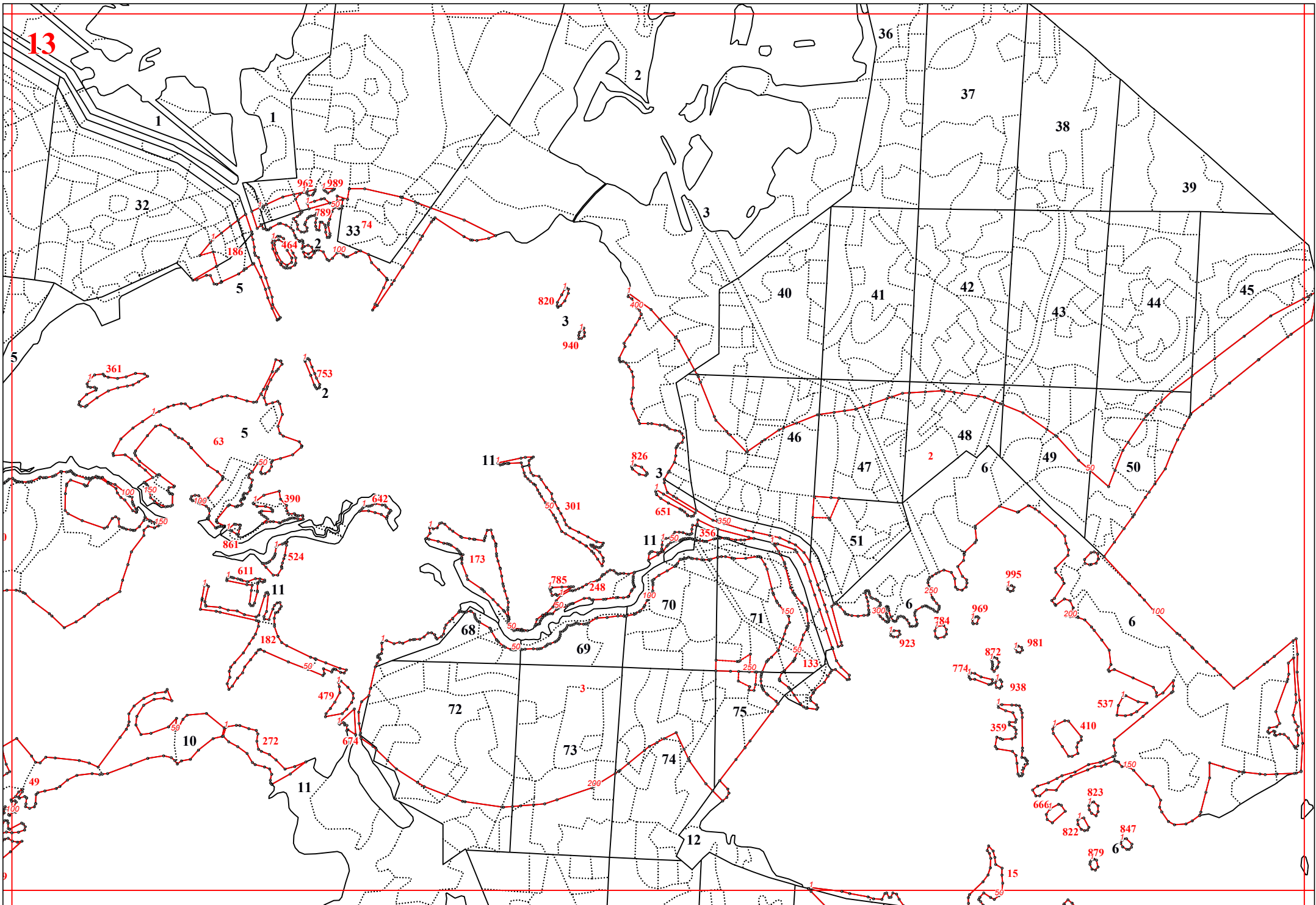


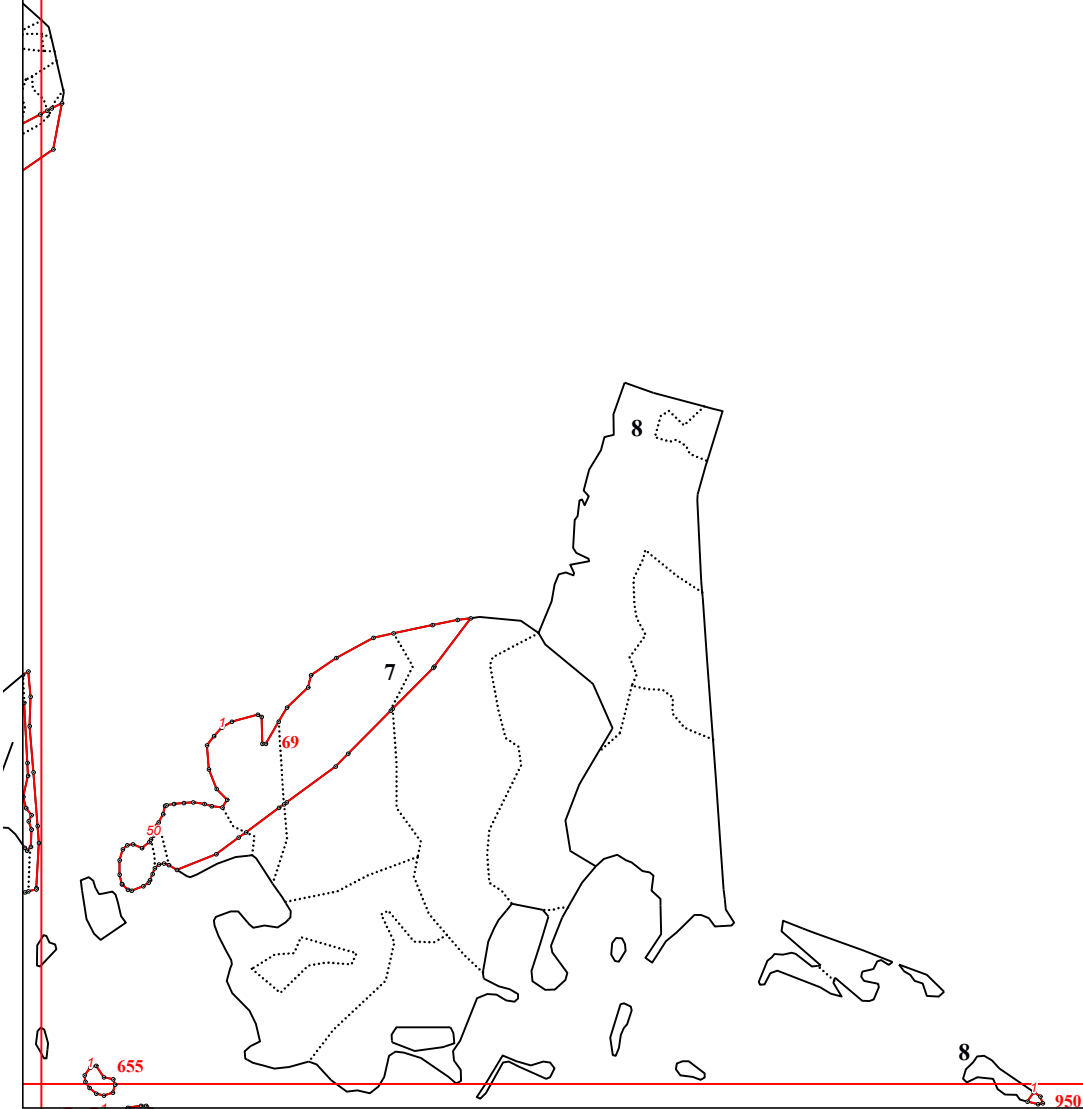


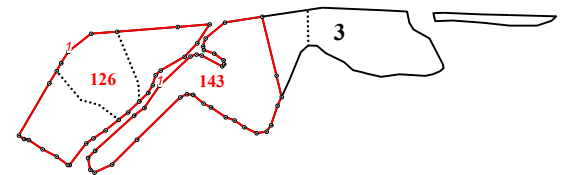




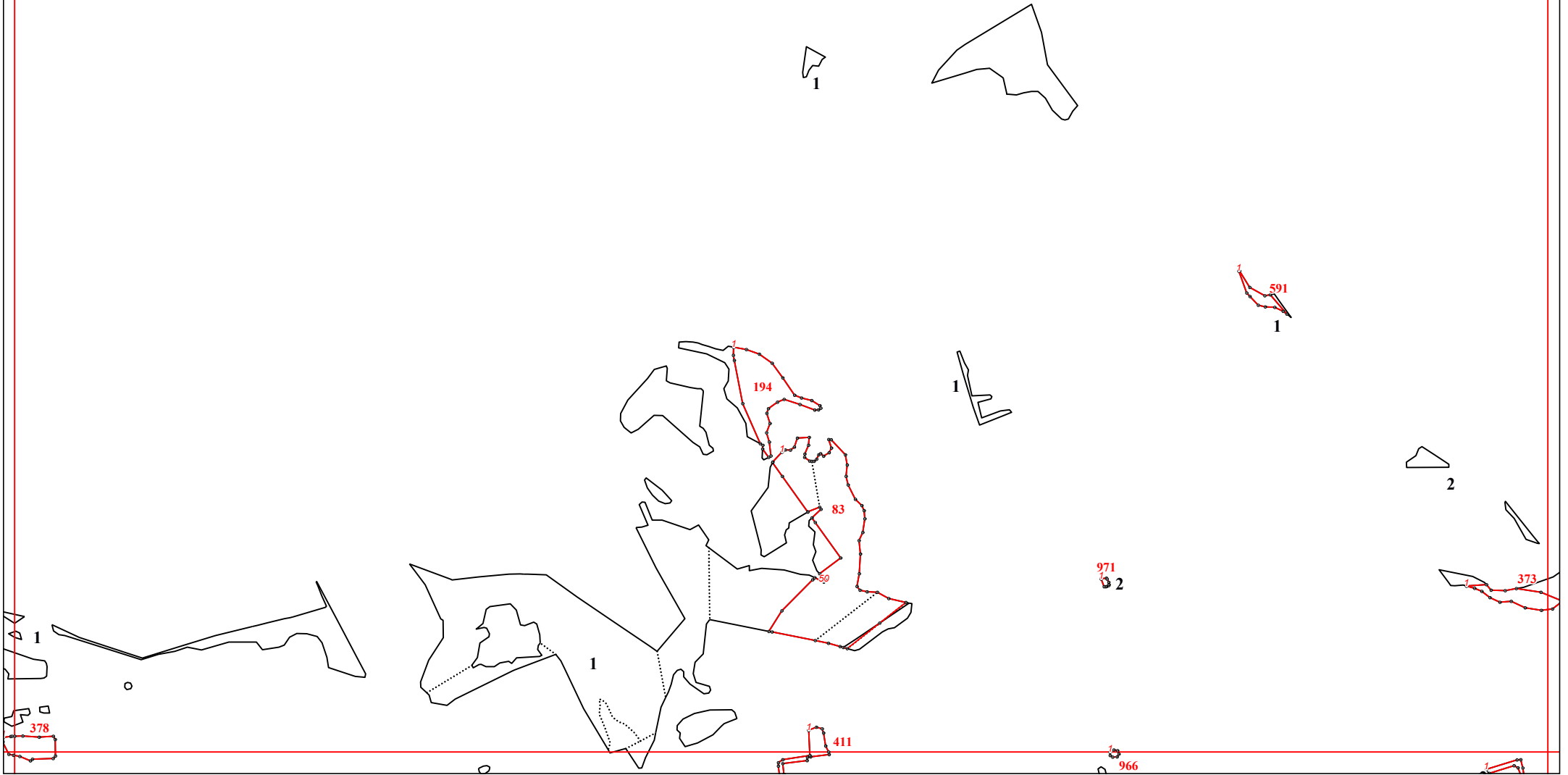


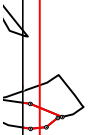


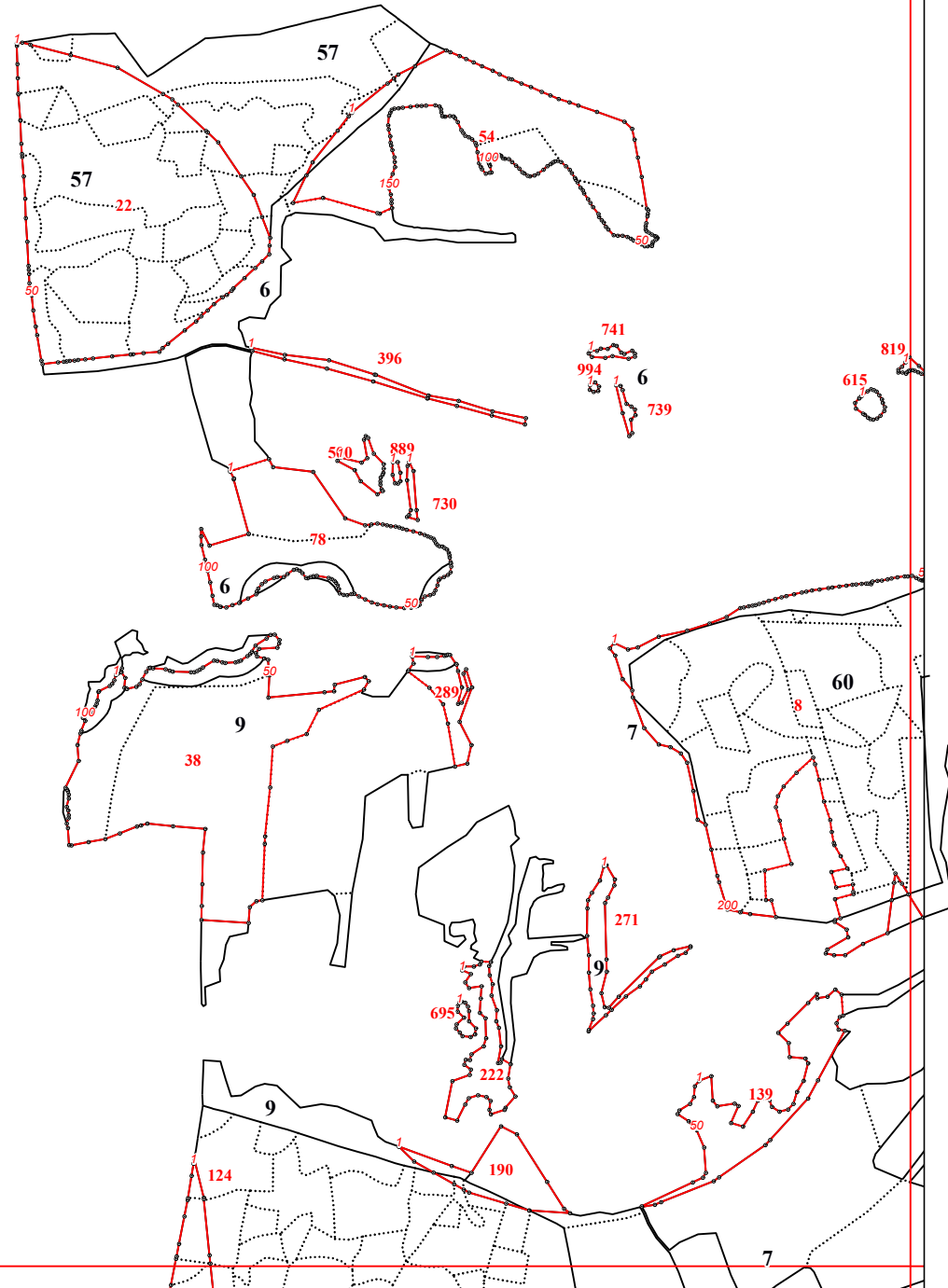


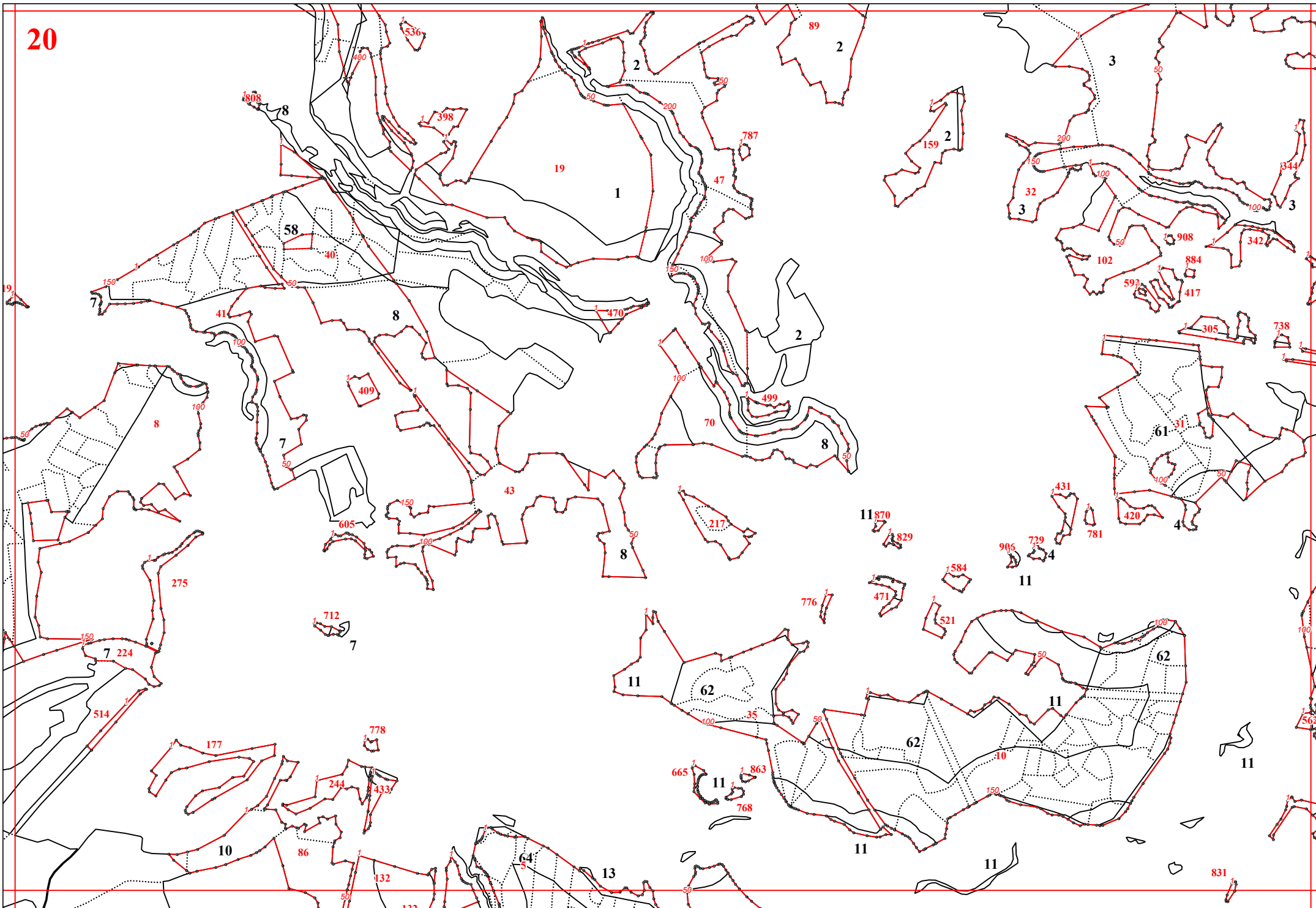


Handwritten text on the right margin, possibly a signature or date, appearing to read '15/7/04'.

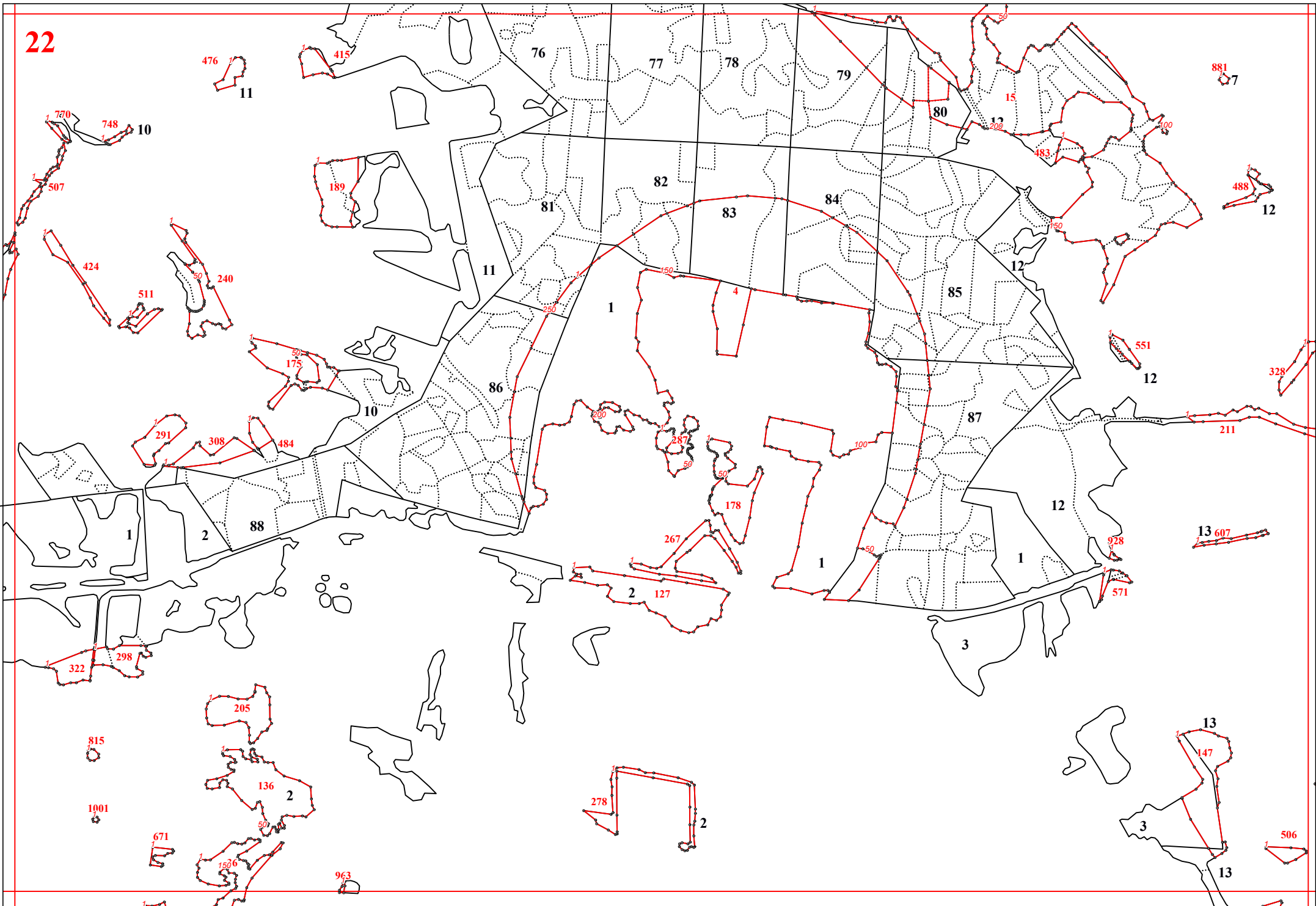












23 443

8

950

795

546

467

288

724

880

281

663

332

527

435

352

755

660

320

7

328

557

211

12

597

489

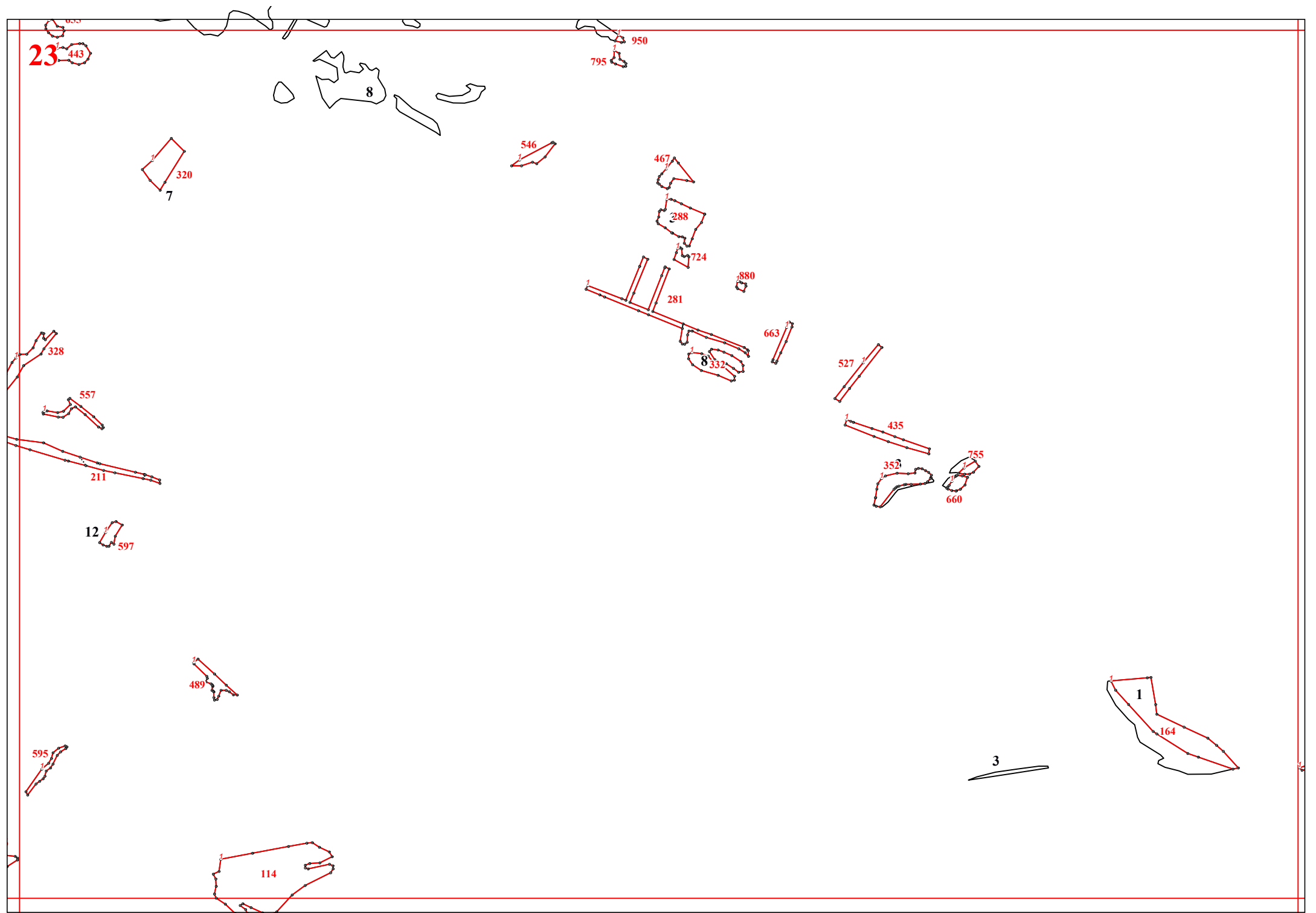
595

114

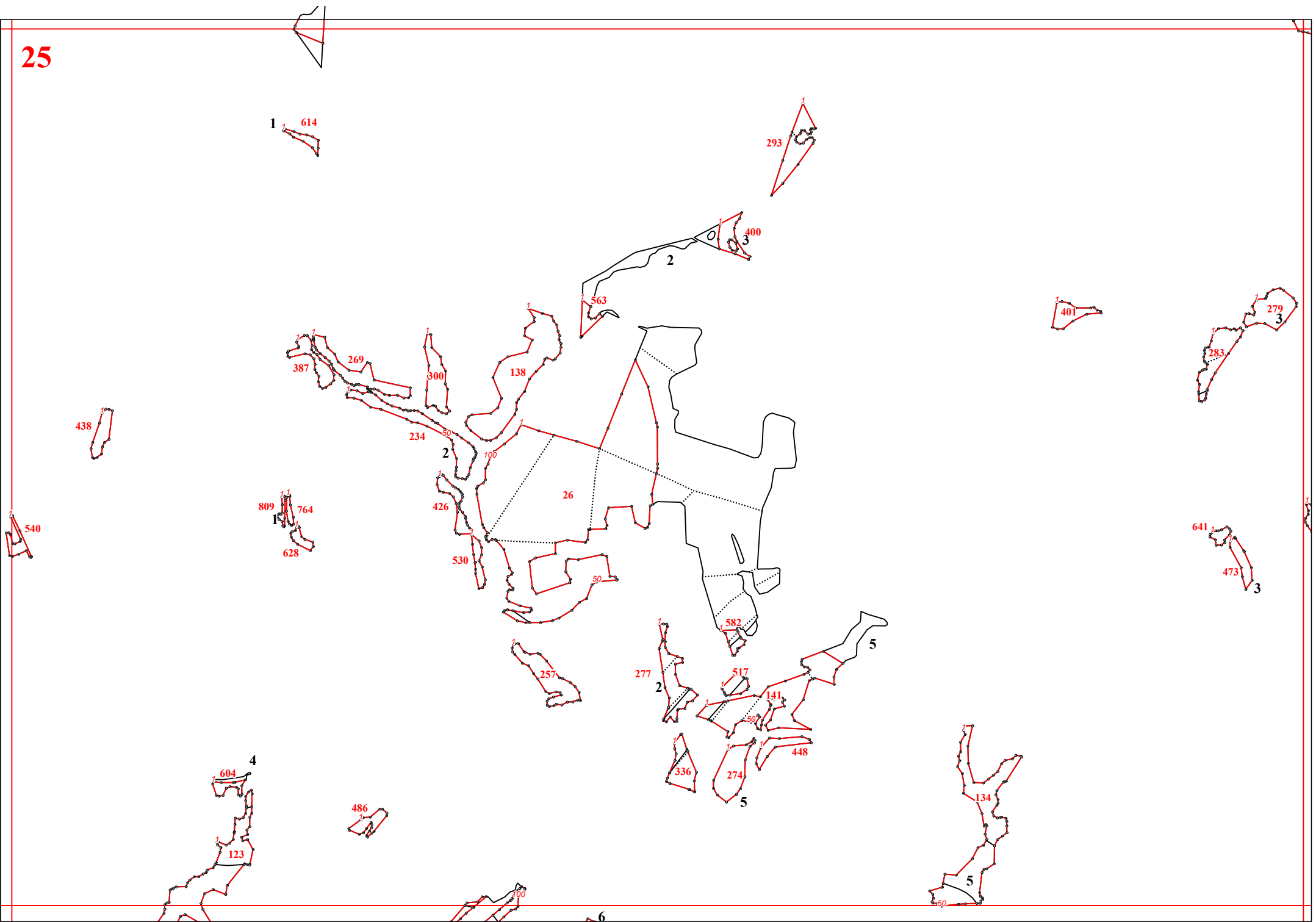
3

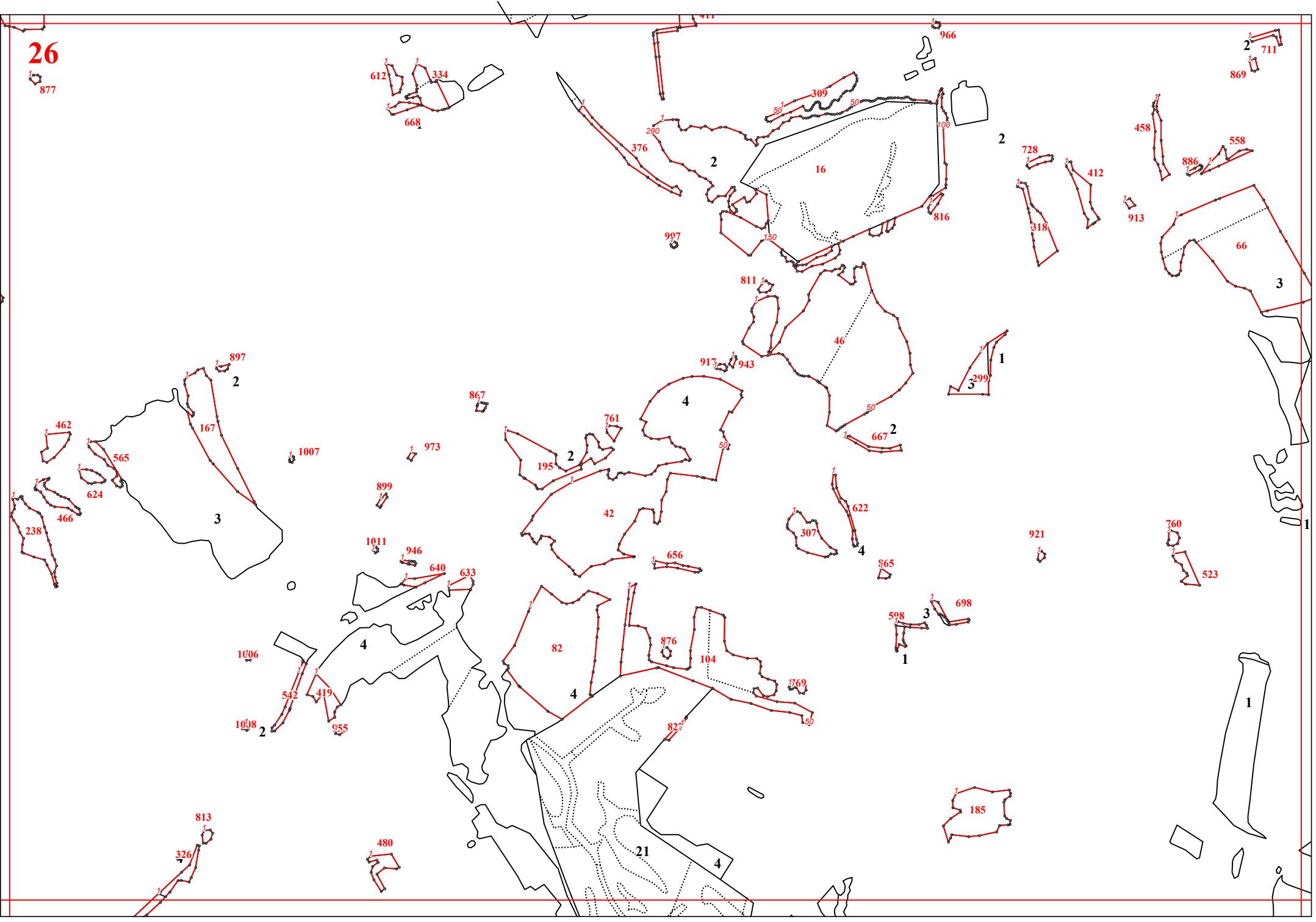
1

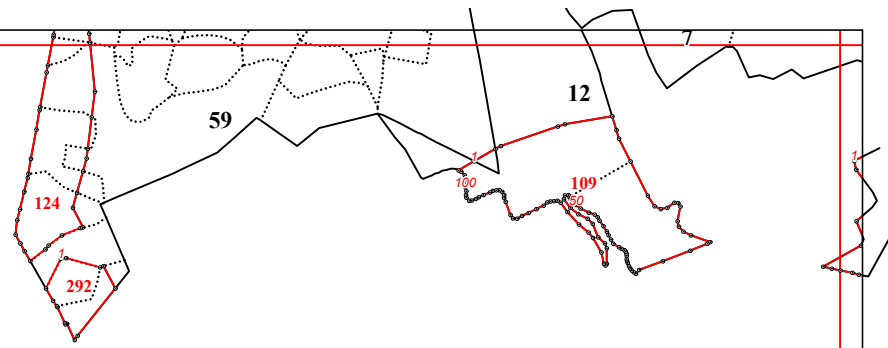
164

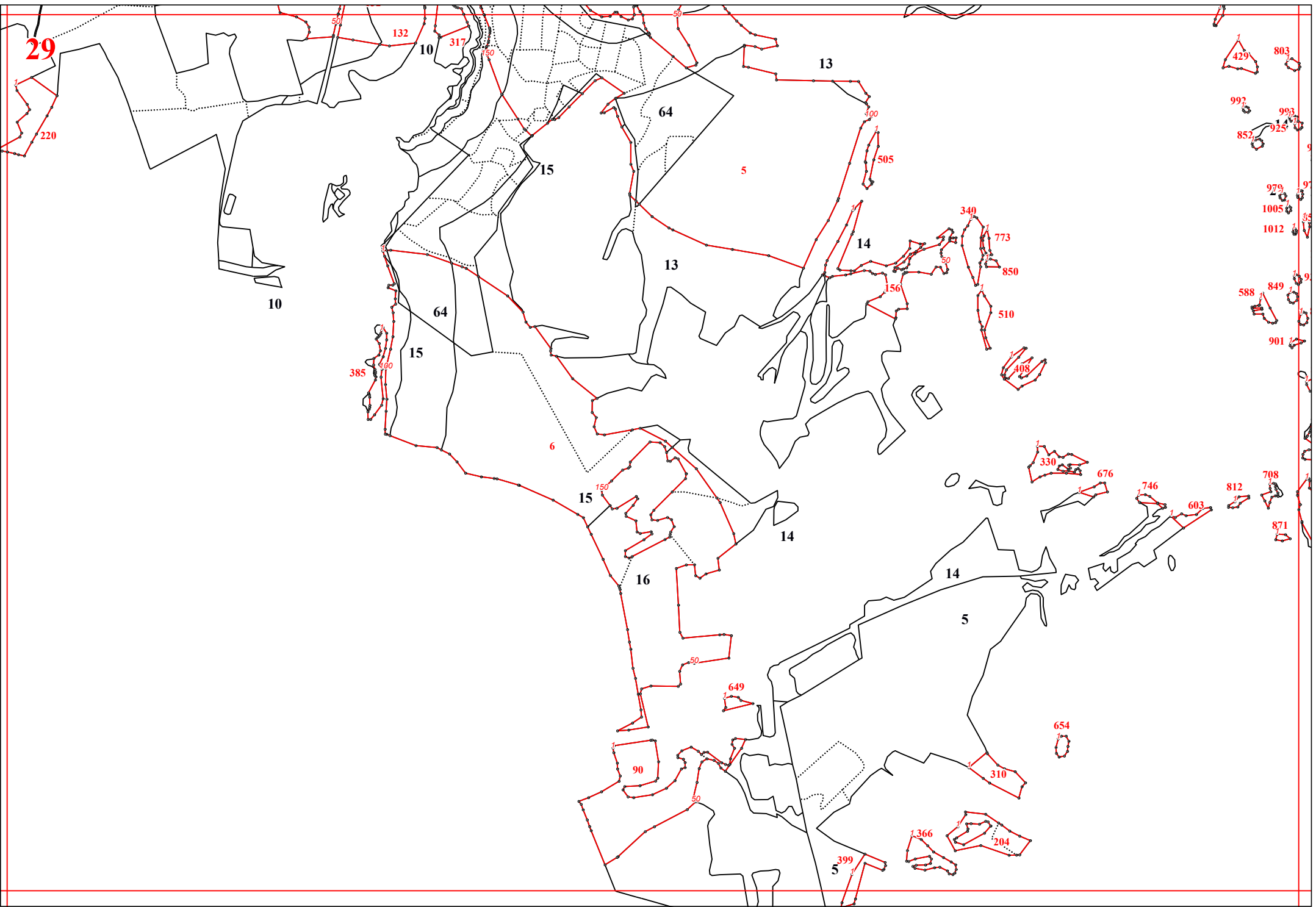


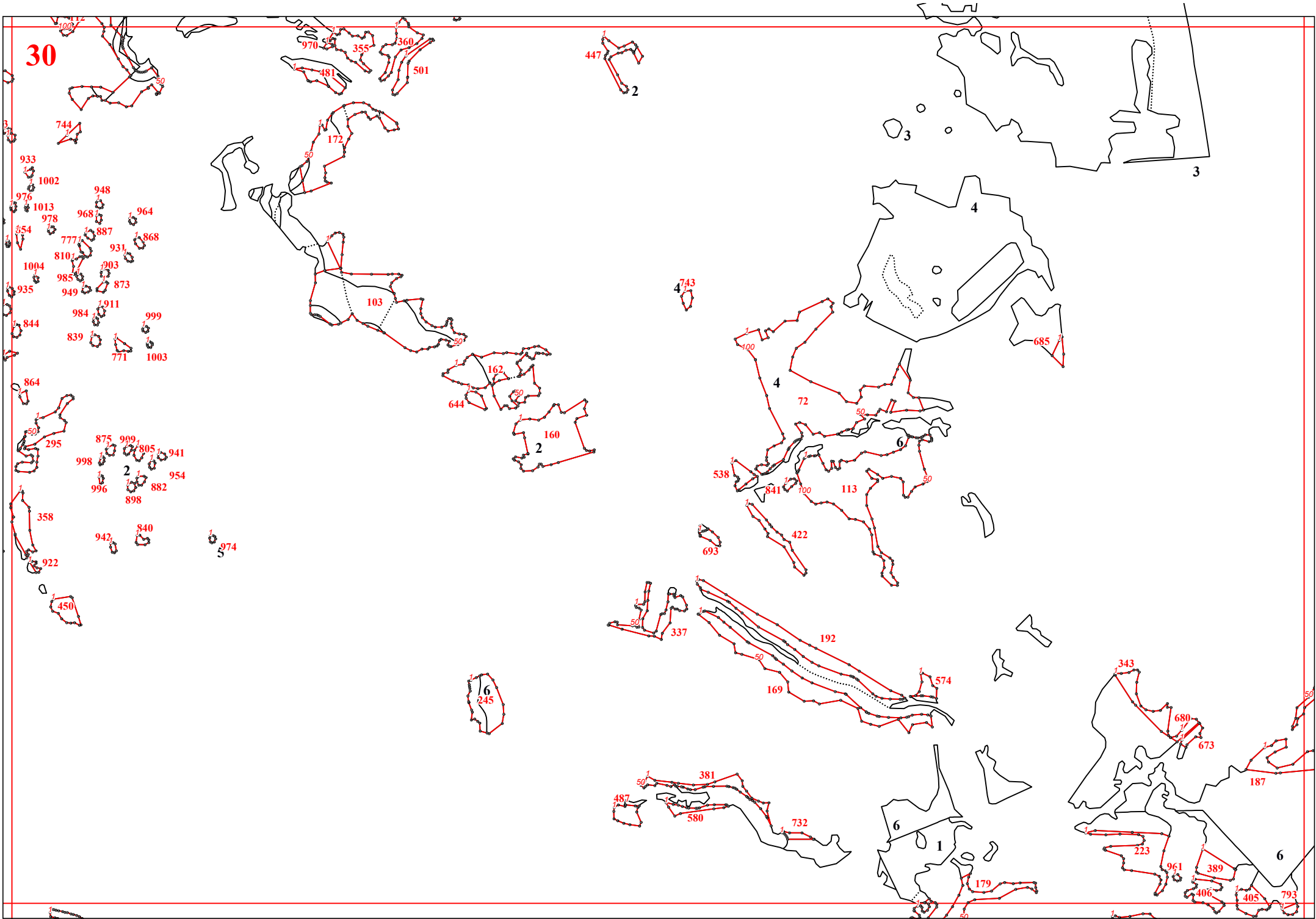




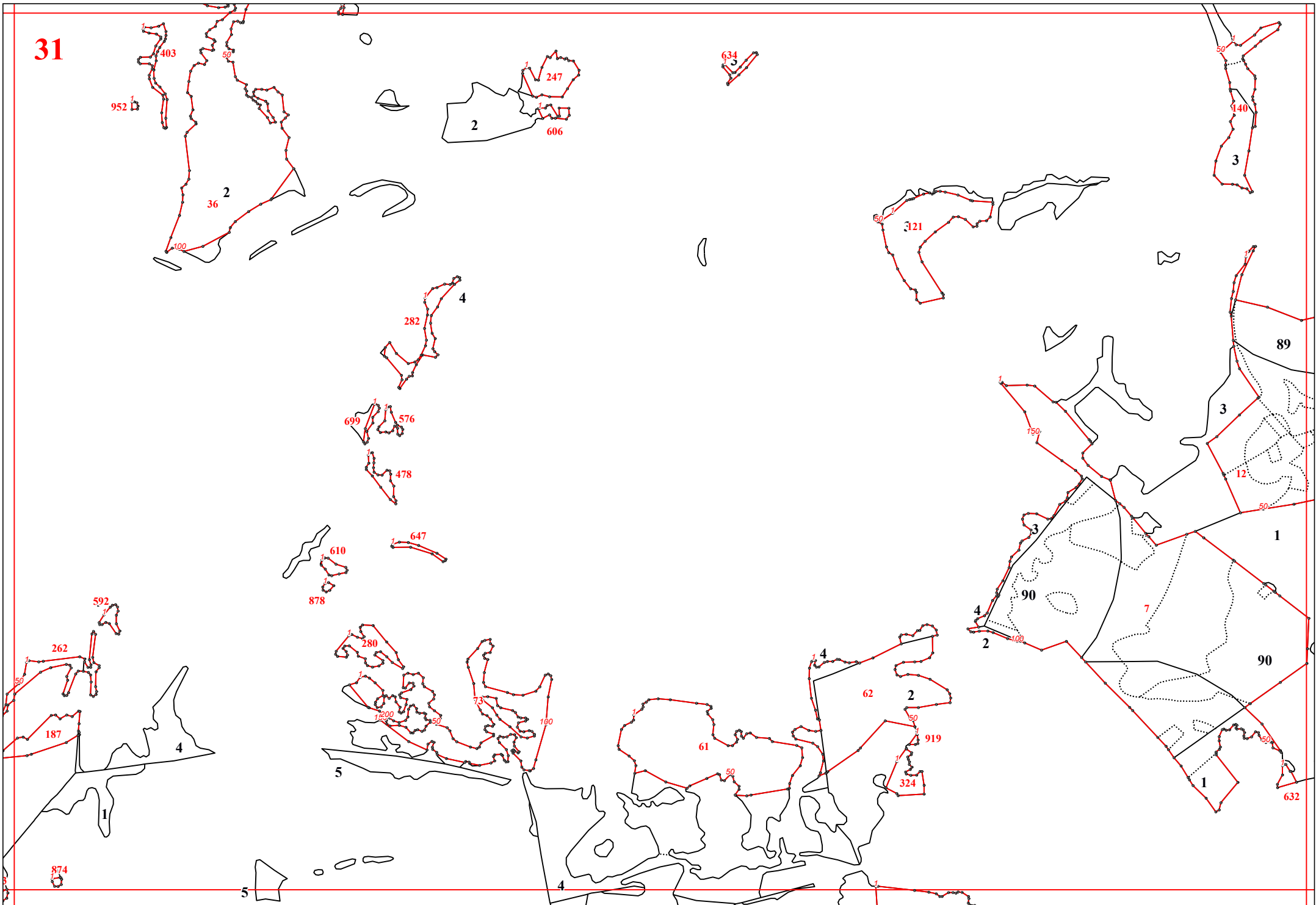








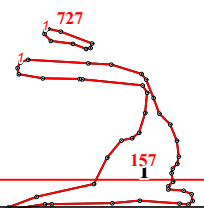
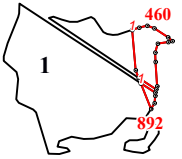
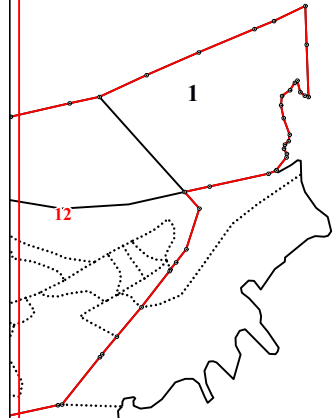
31



32

13

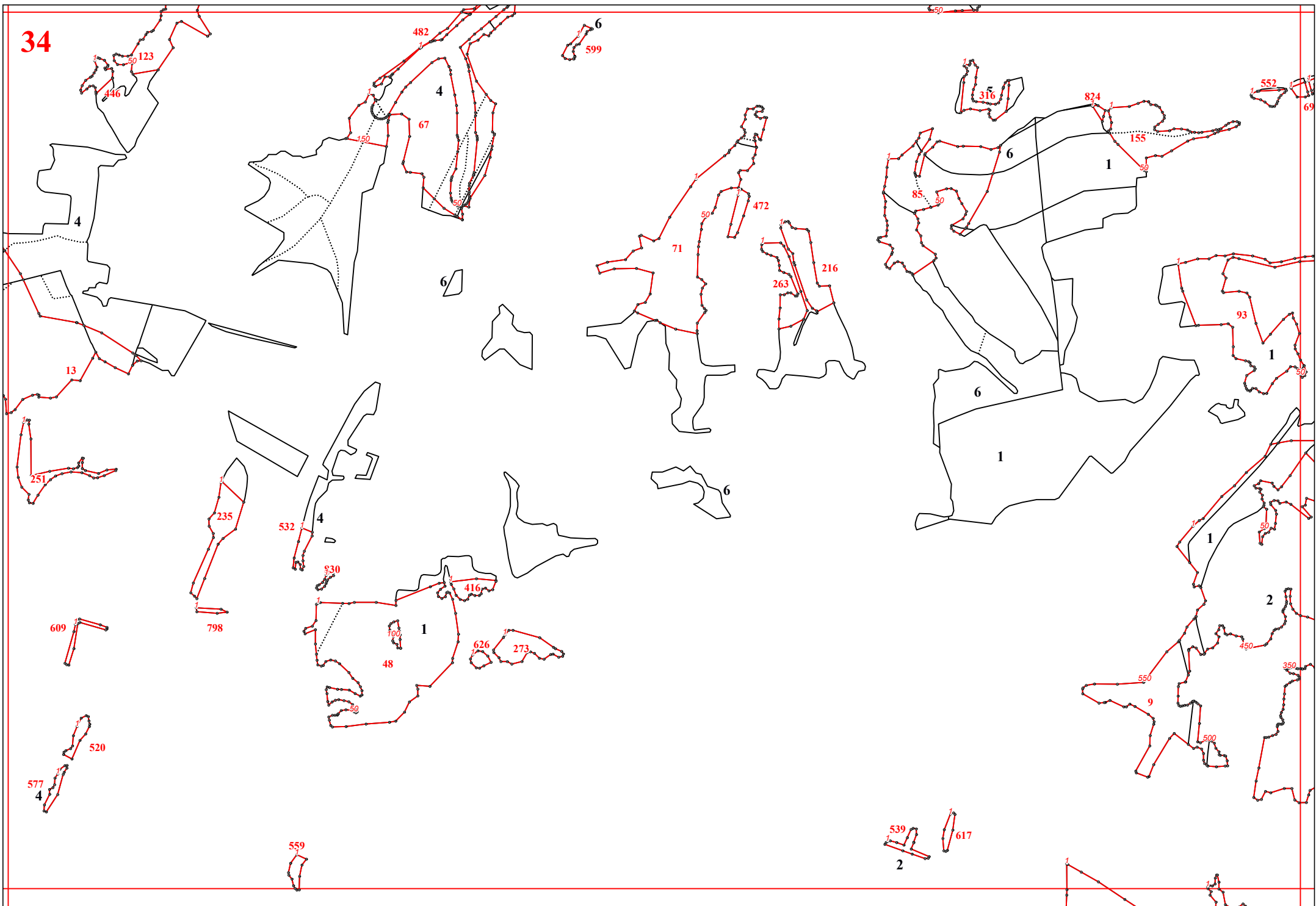
534



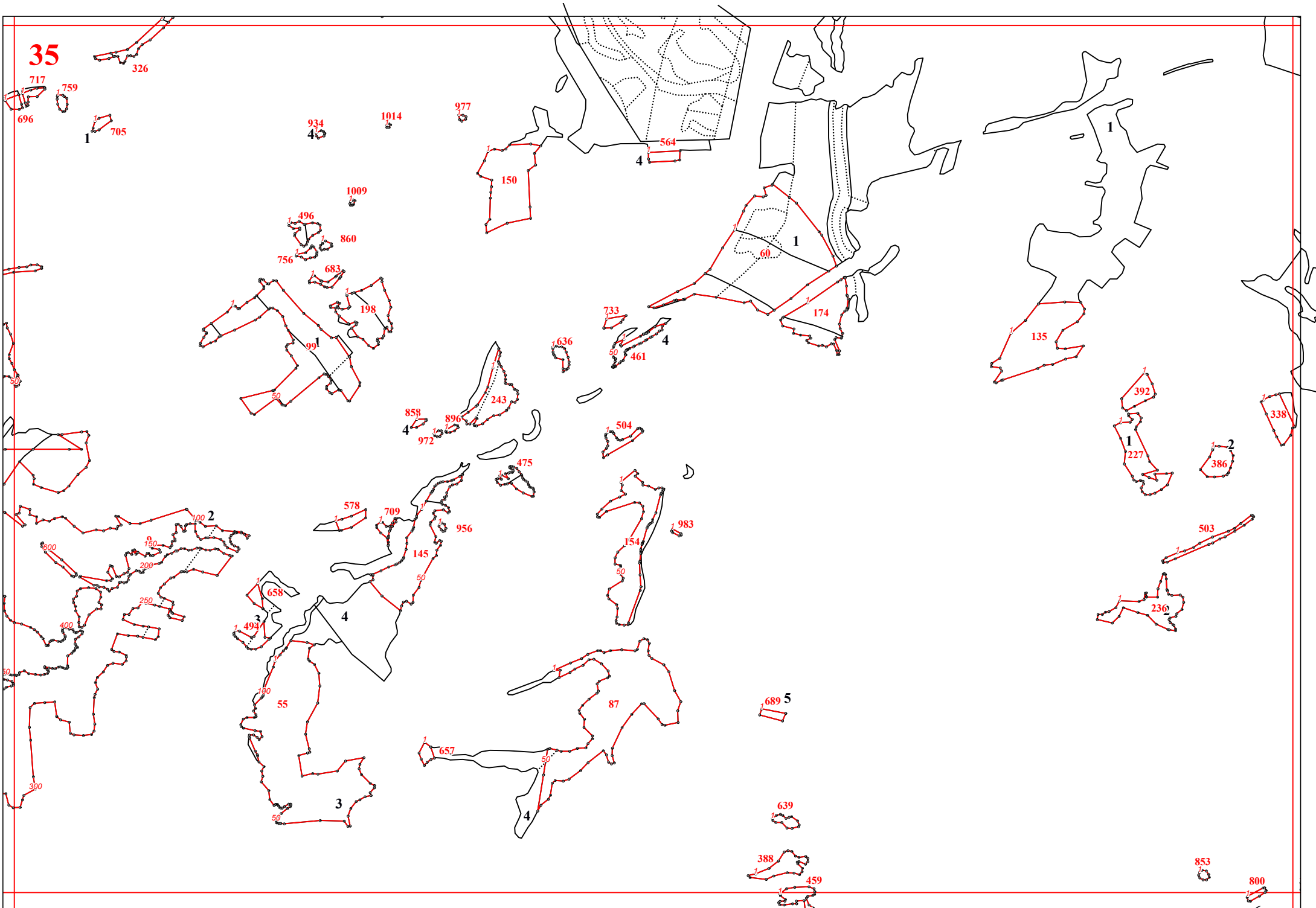
33



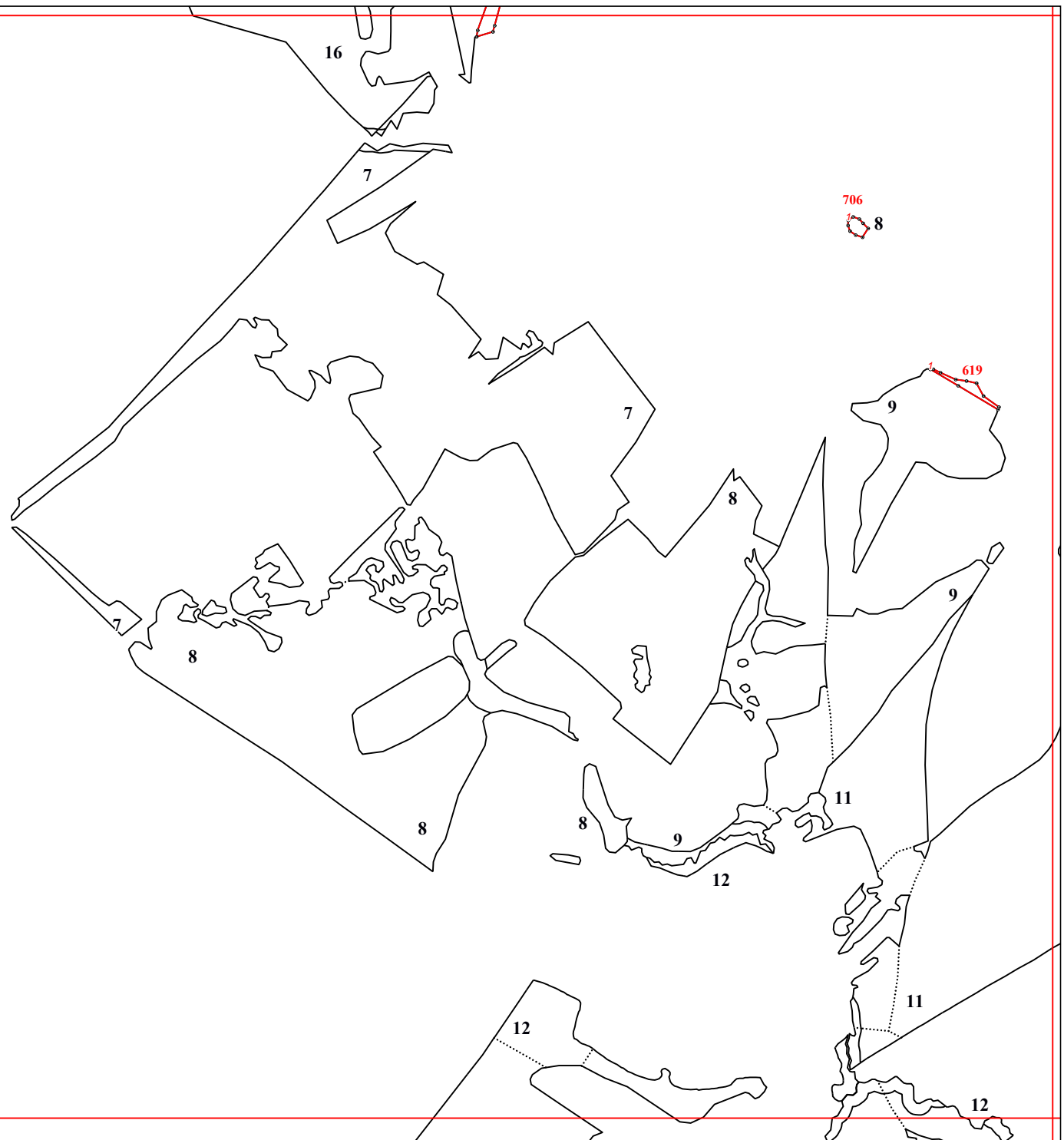
34



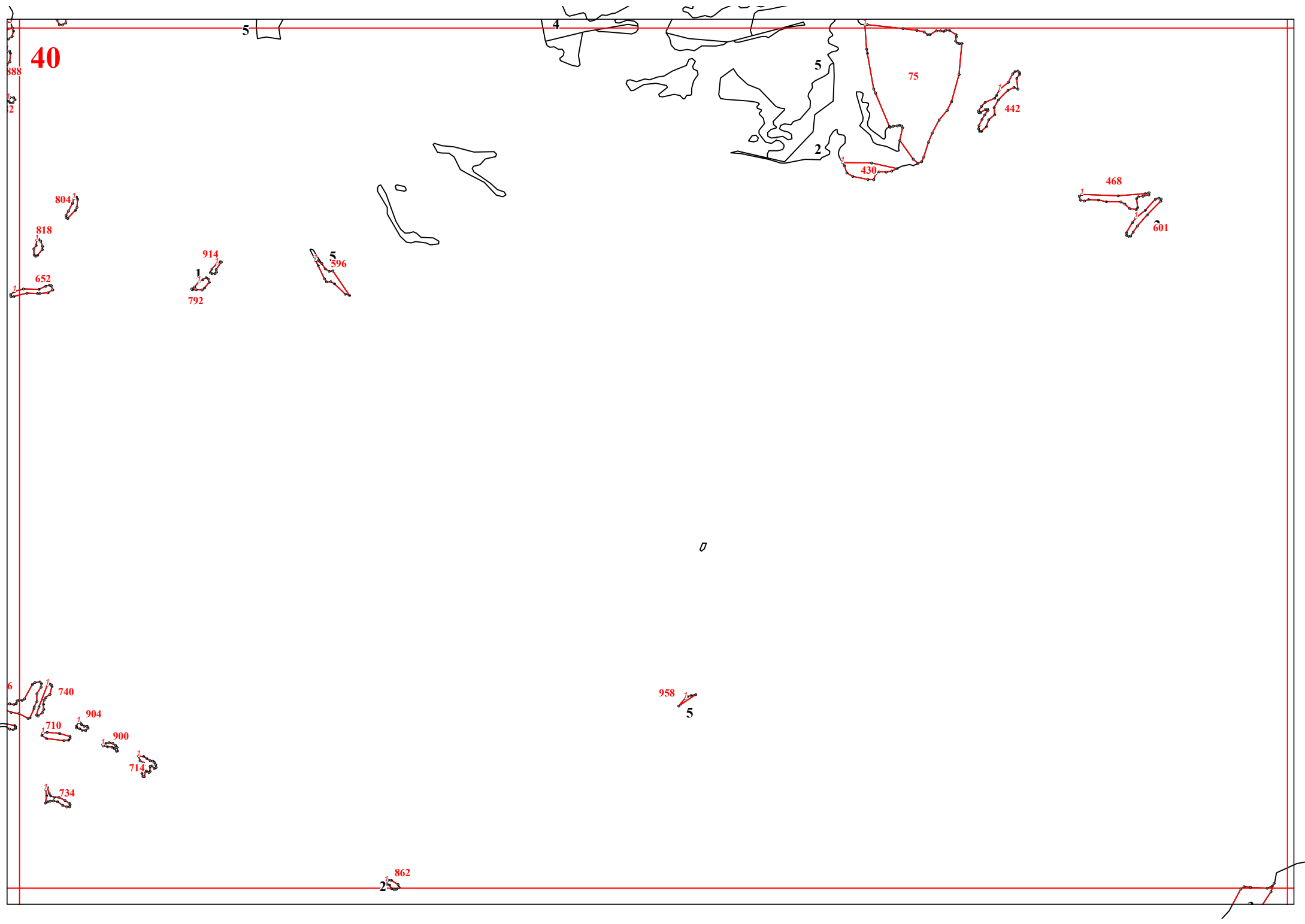
35



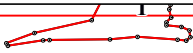








41



157



718



3



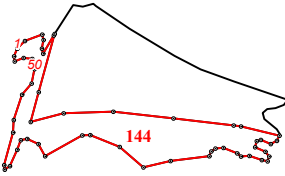
453

3

736

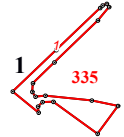


608



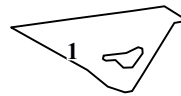
50

144

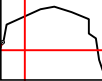


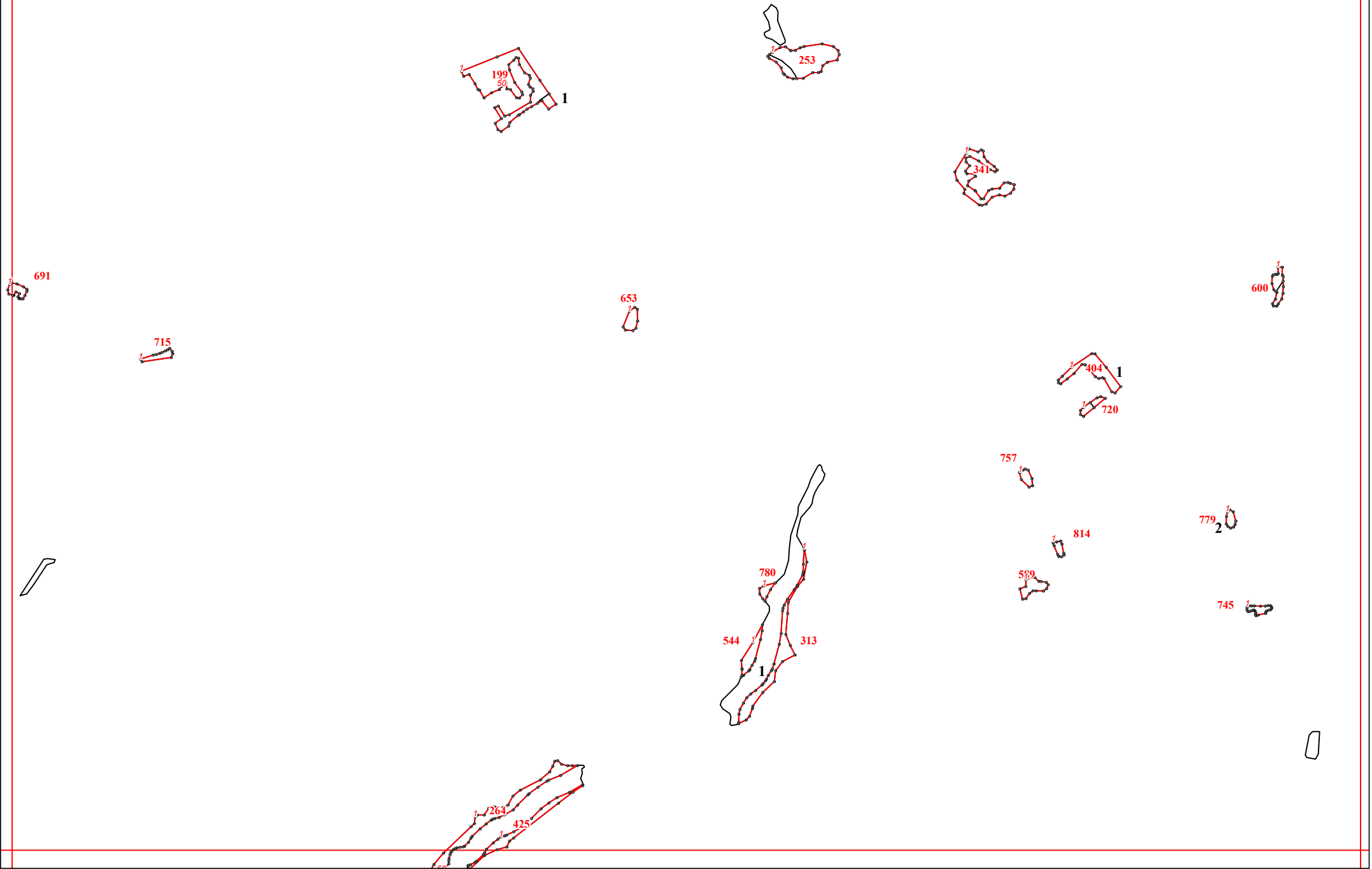
1

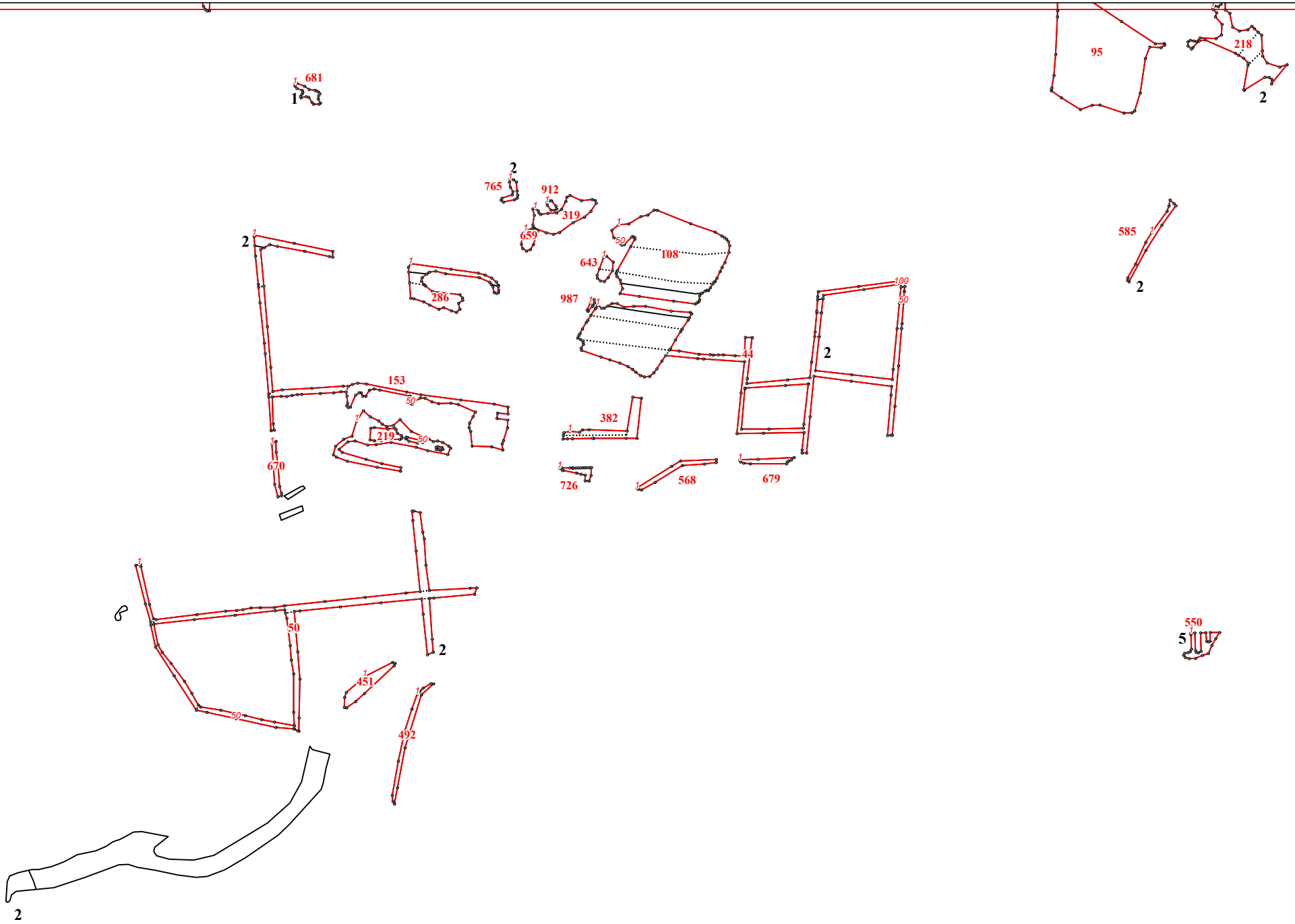
335

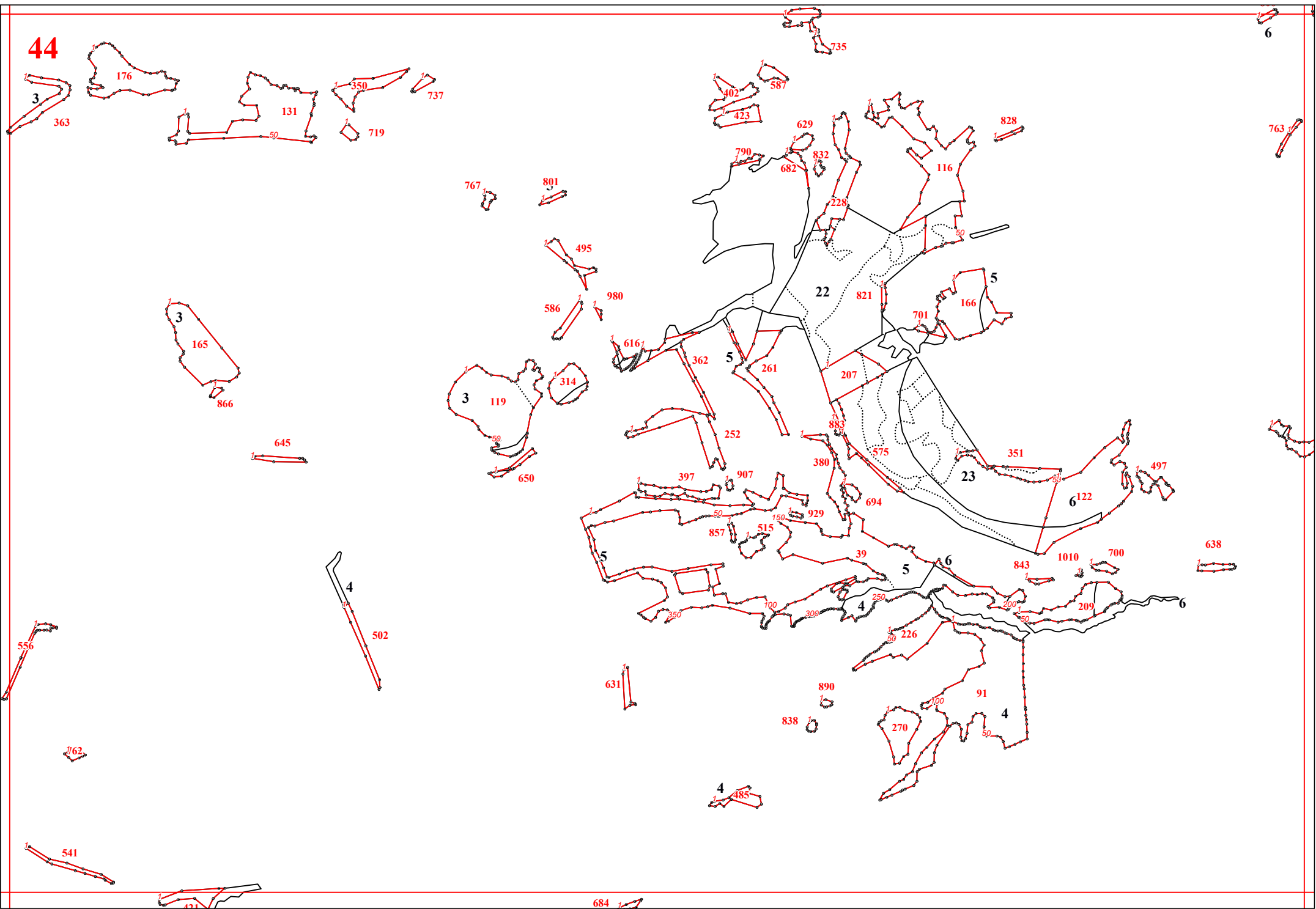


1



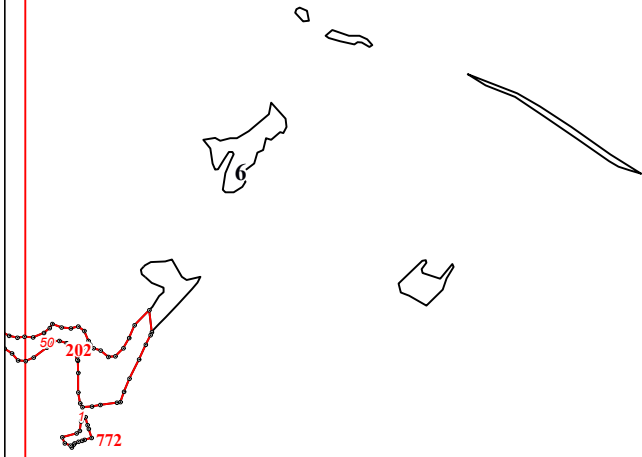


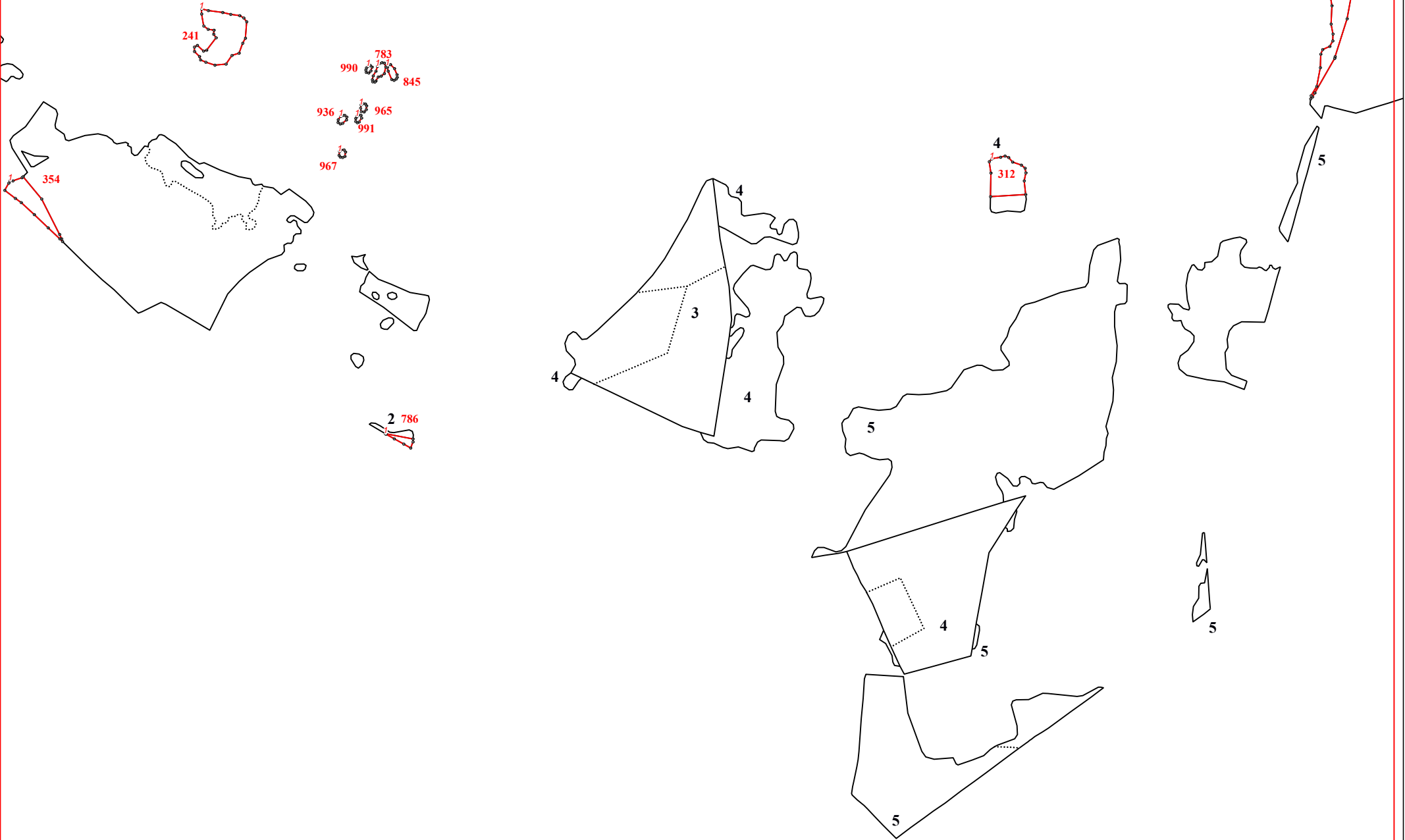




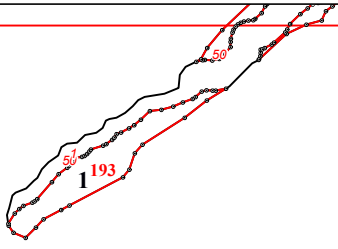
45

749



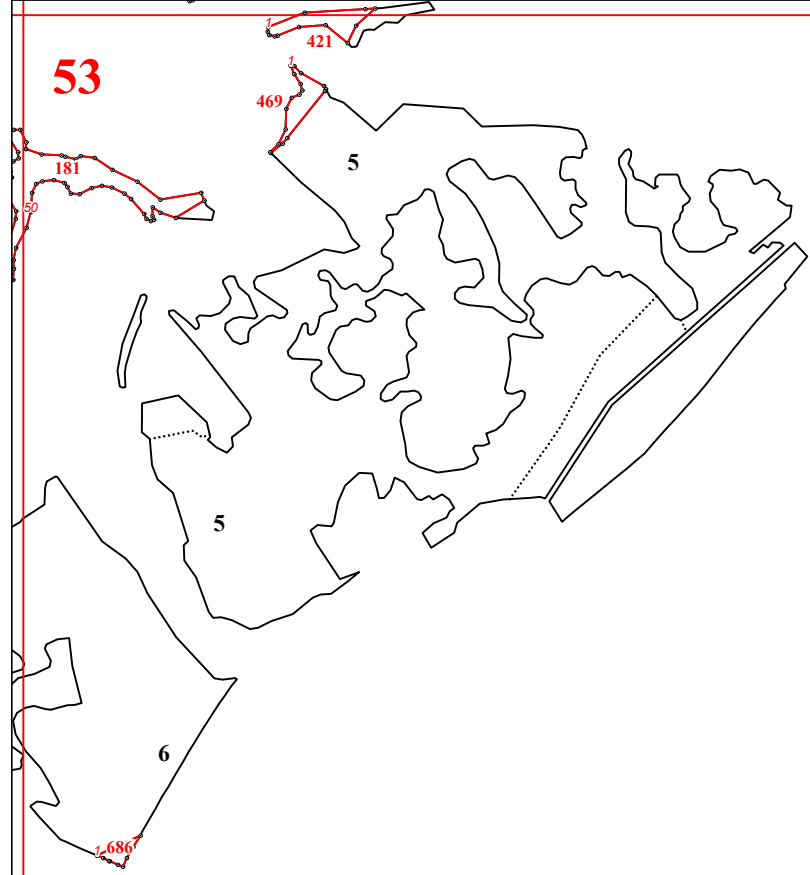


51





53



684
4

