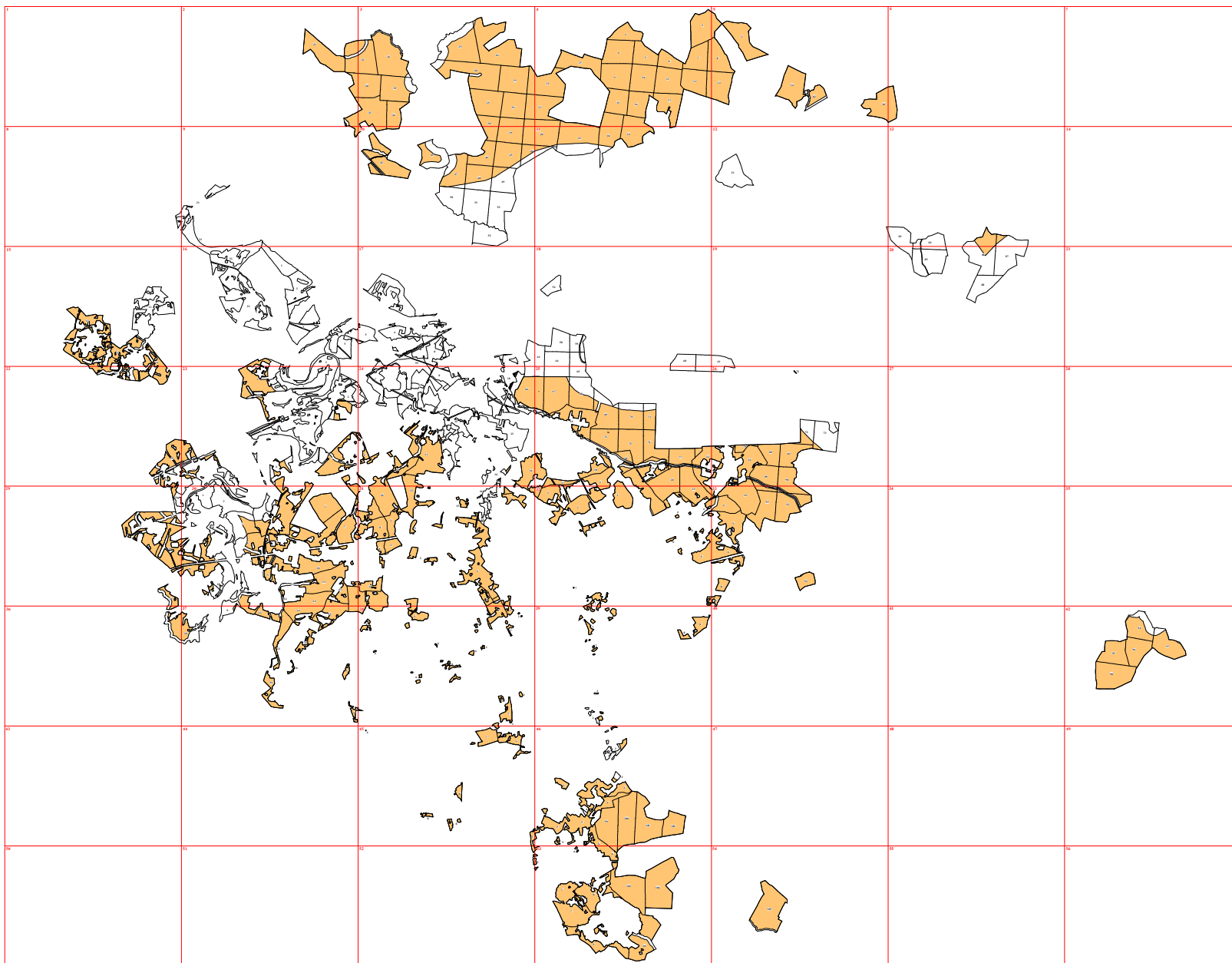
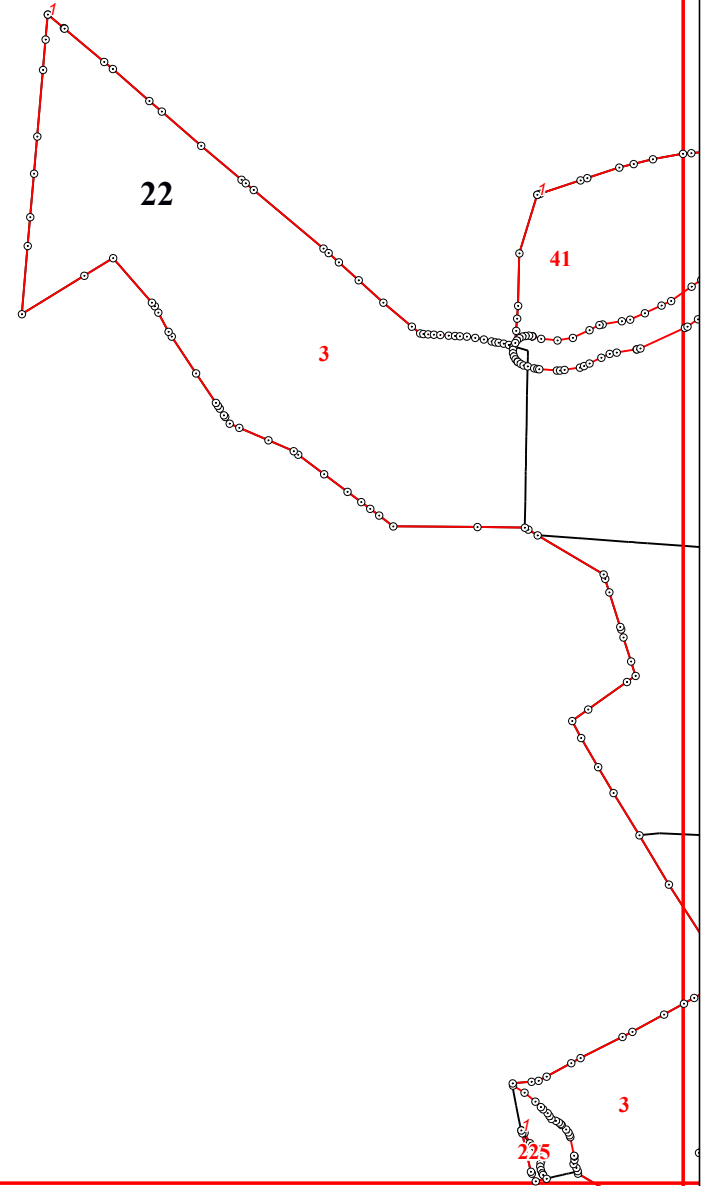


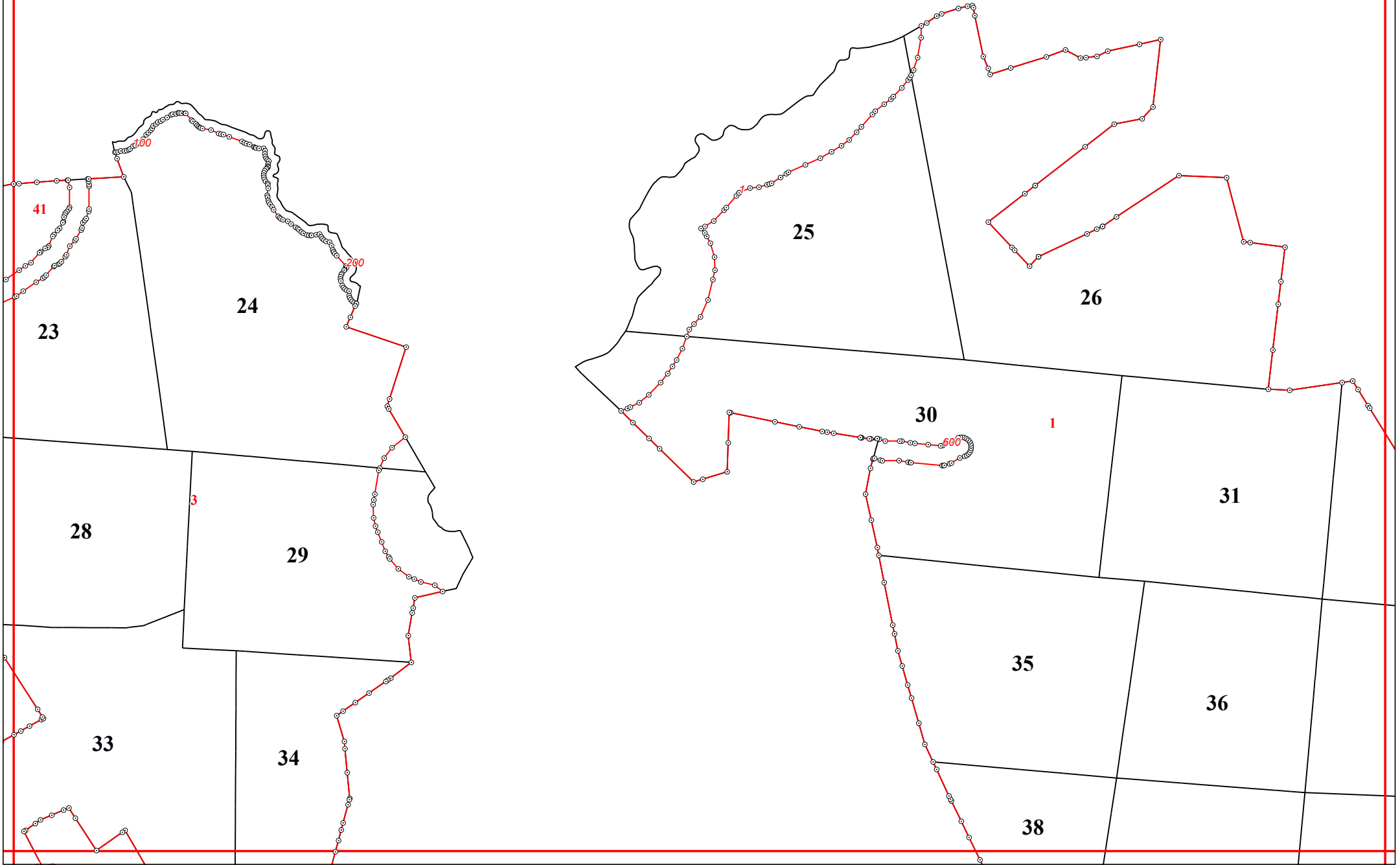
**Графическое описание местоположения границ земель,  
на которых располагаются эксплуатационные леса,  
на территории Юхновского участкового лесничества  
Юхновского лесничества Калужской области**

Приложение № 74 к приказу Рослесхоза  
от 28.02.2023 № 269

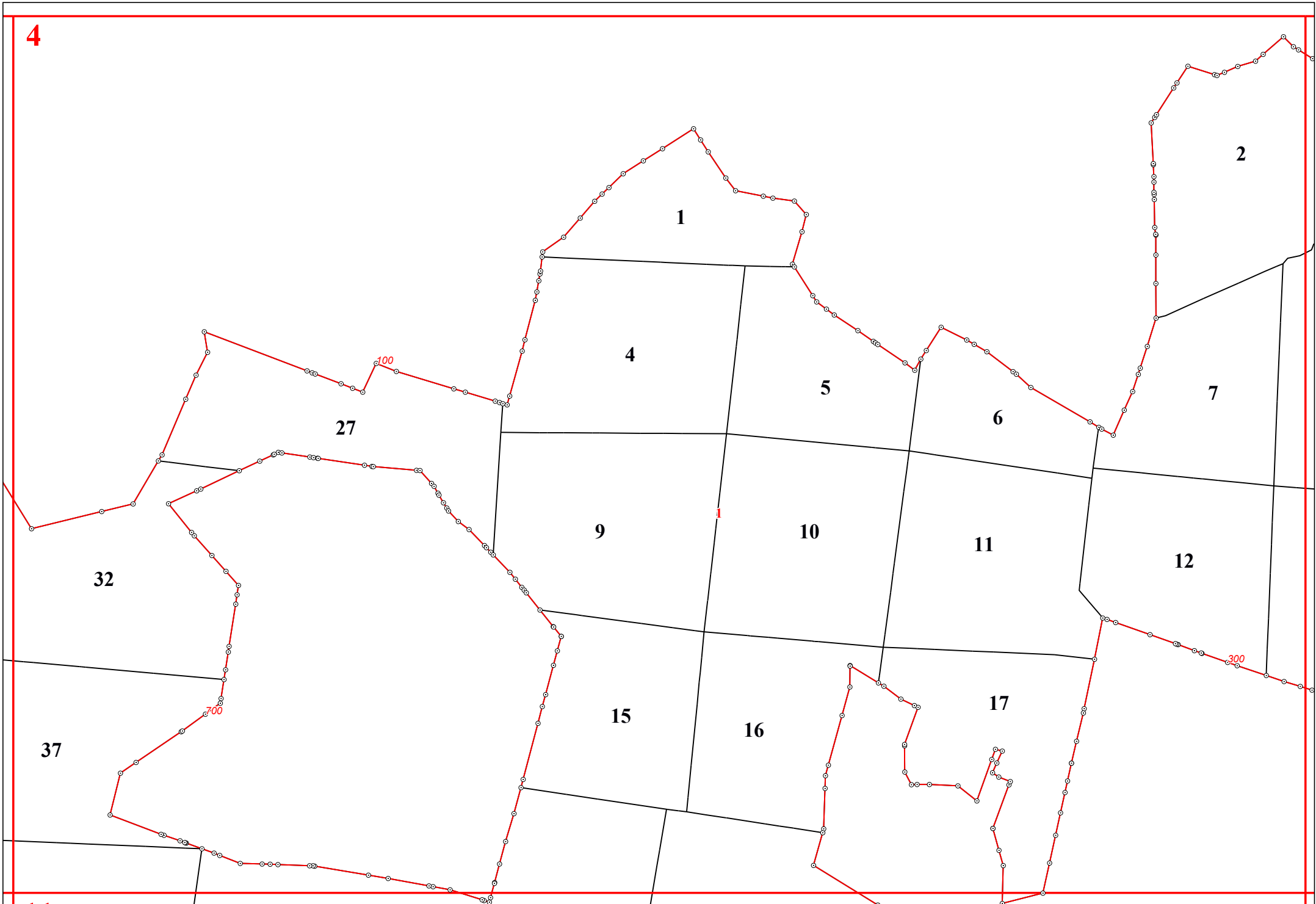




3



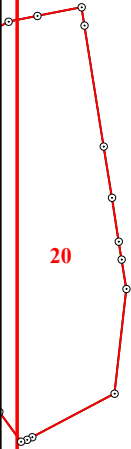
4



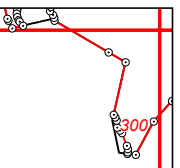


6

20

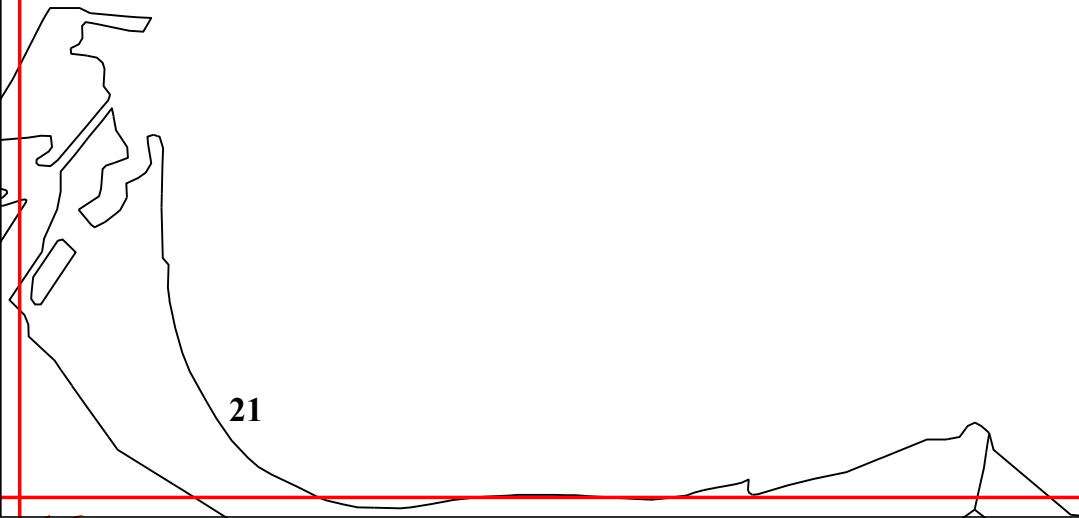
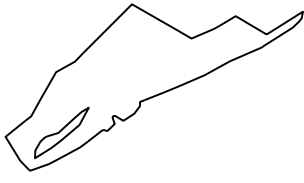


9



21

21



10

46

67

42

29

78

40

43

500

47

48

50

51

52

53

39

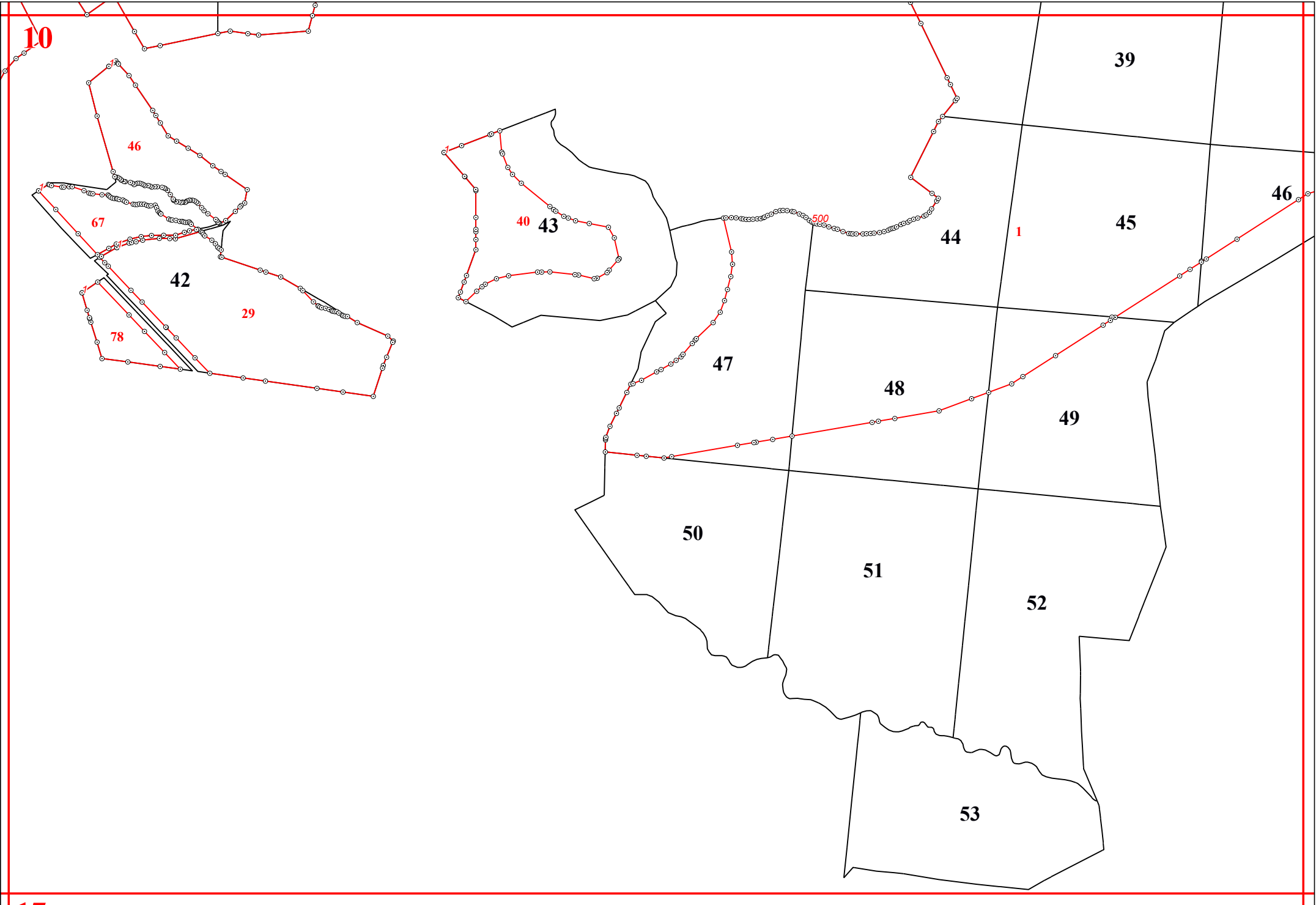
45

1

44

46

49





**11**

**40**

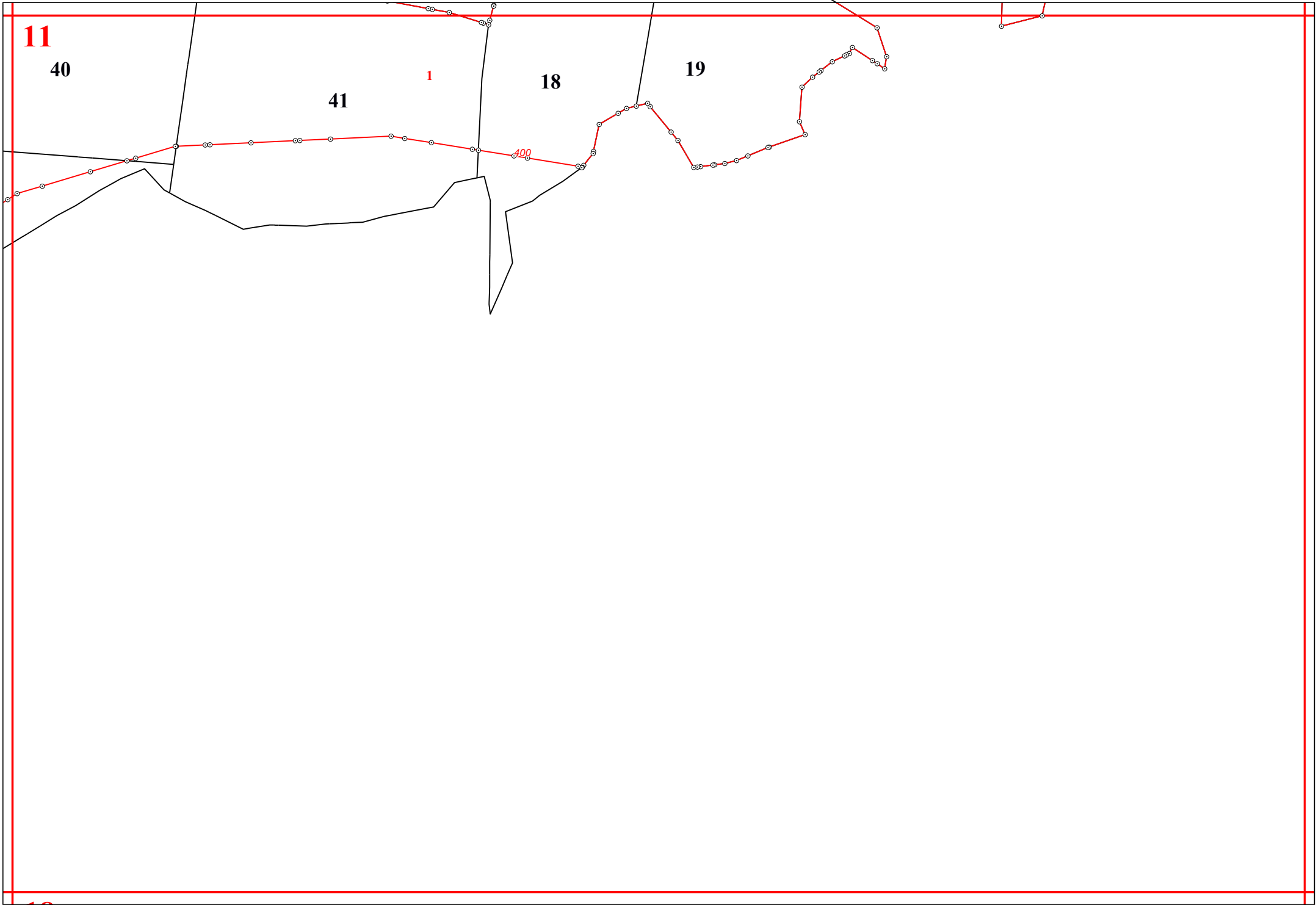
**41**

**1**

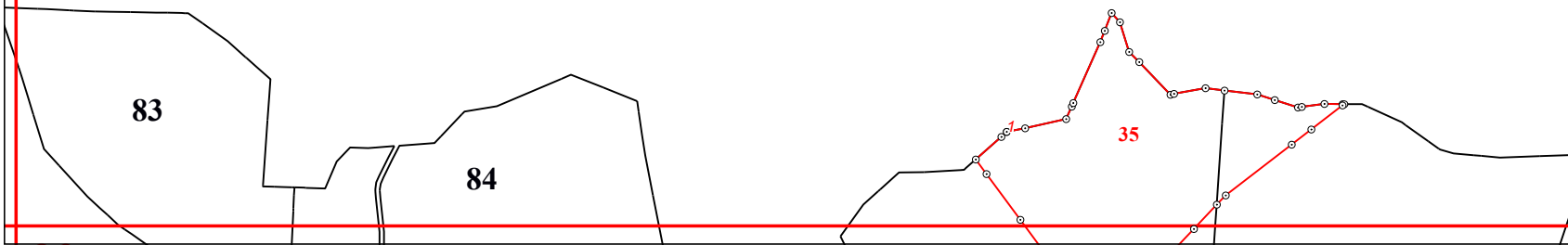
**18**

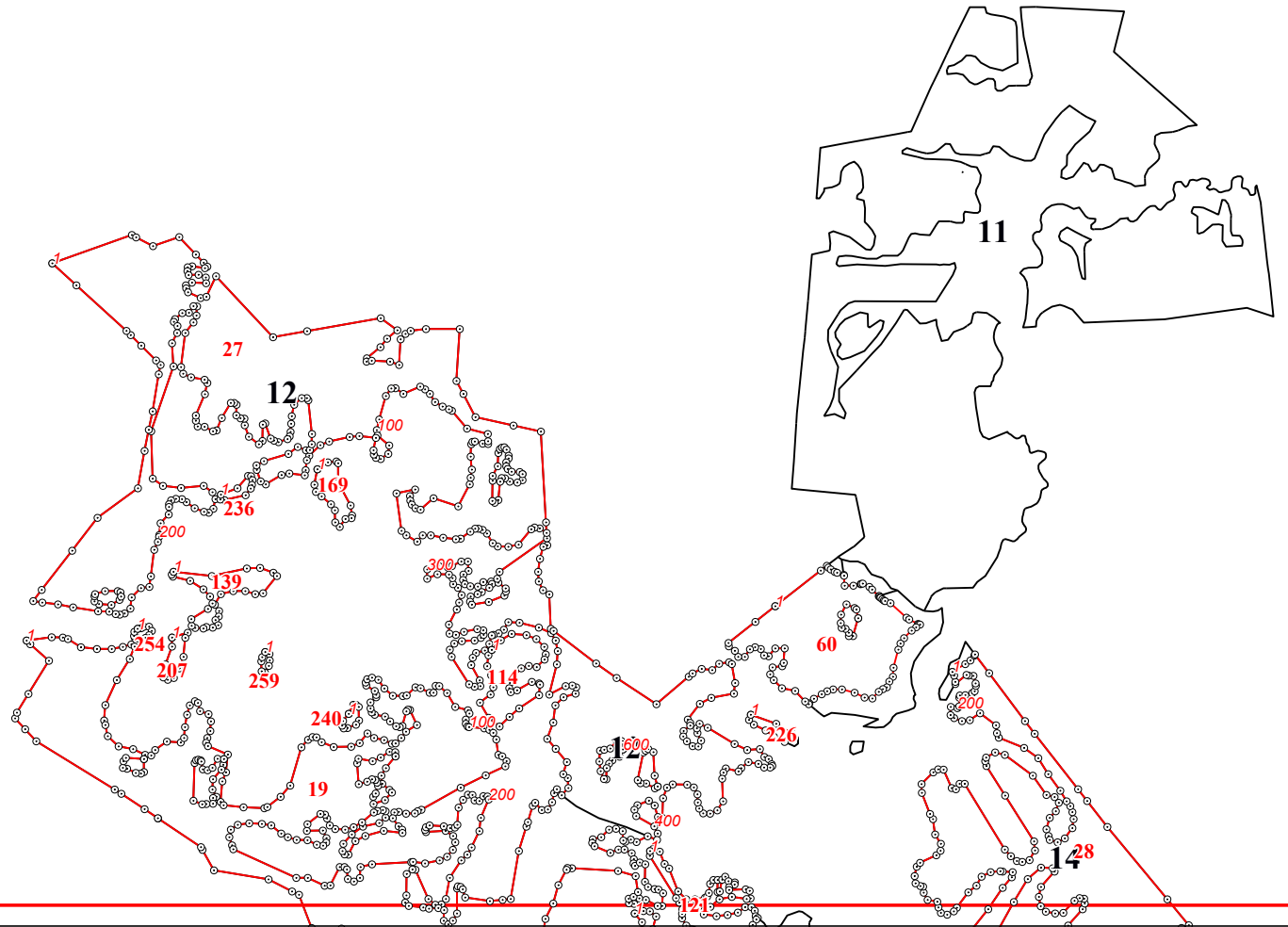
**19**

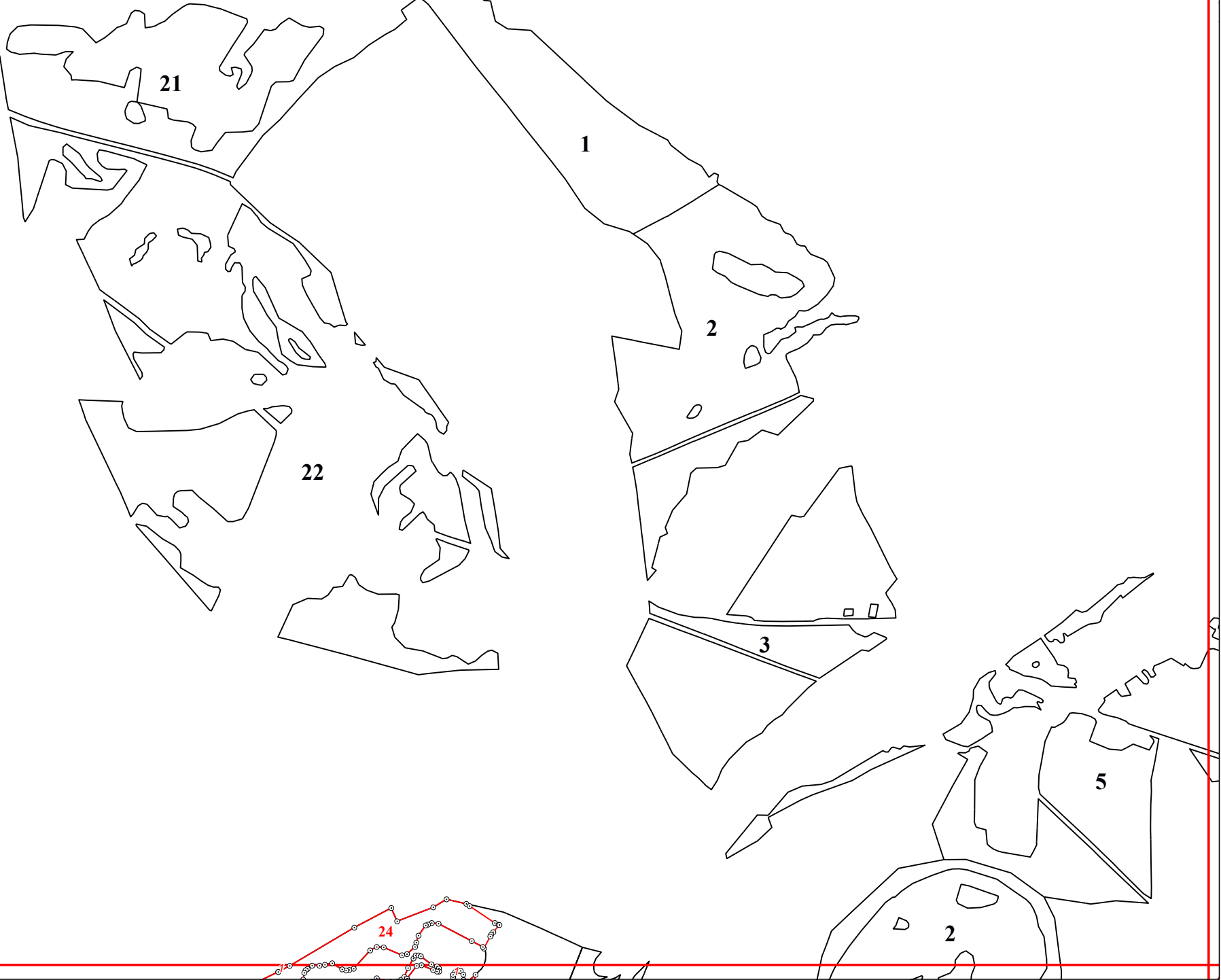
*100*



13







20

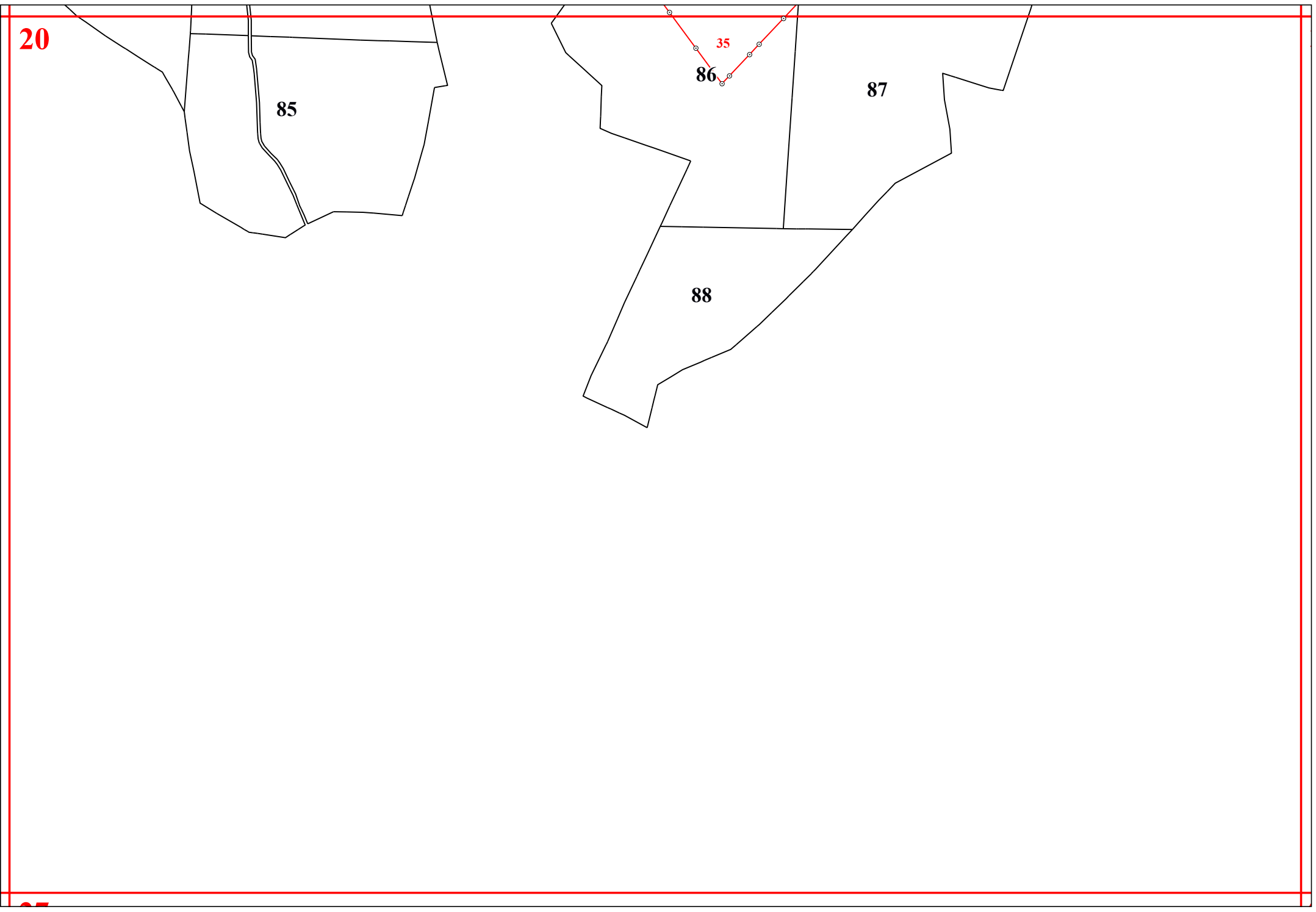
85

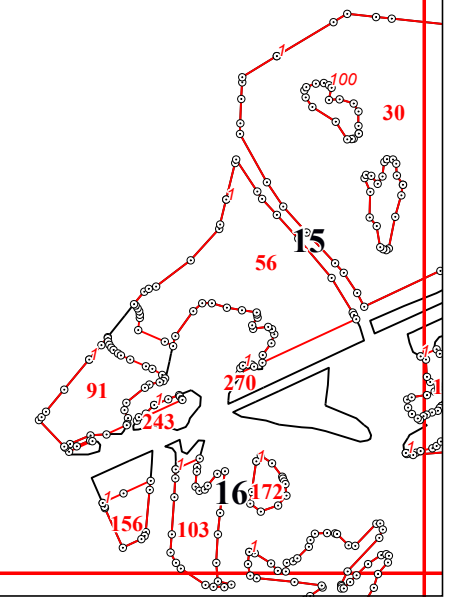
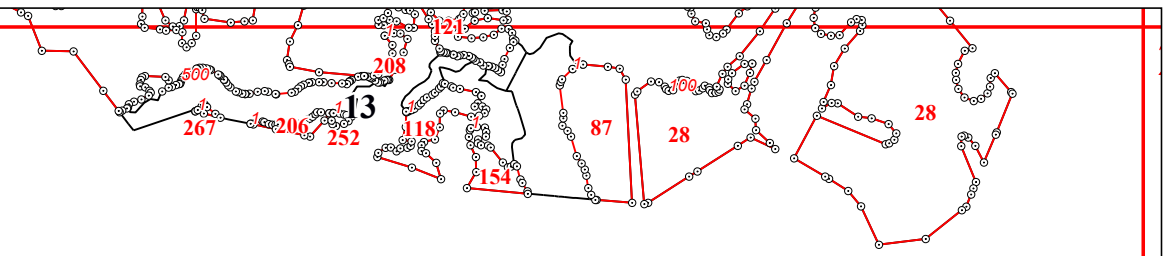
86

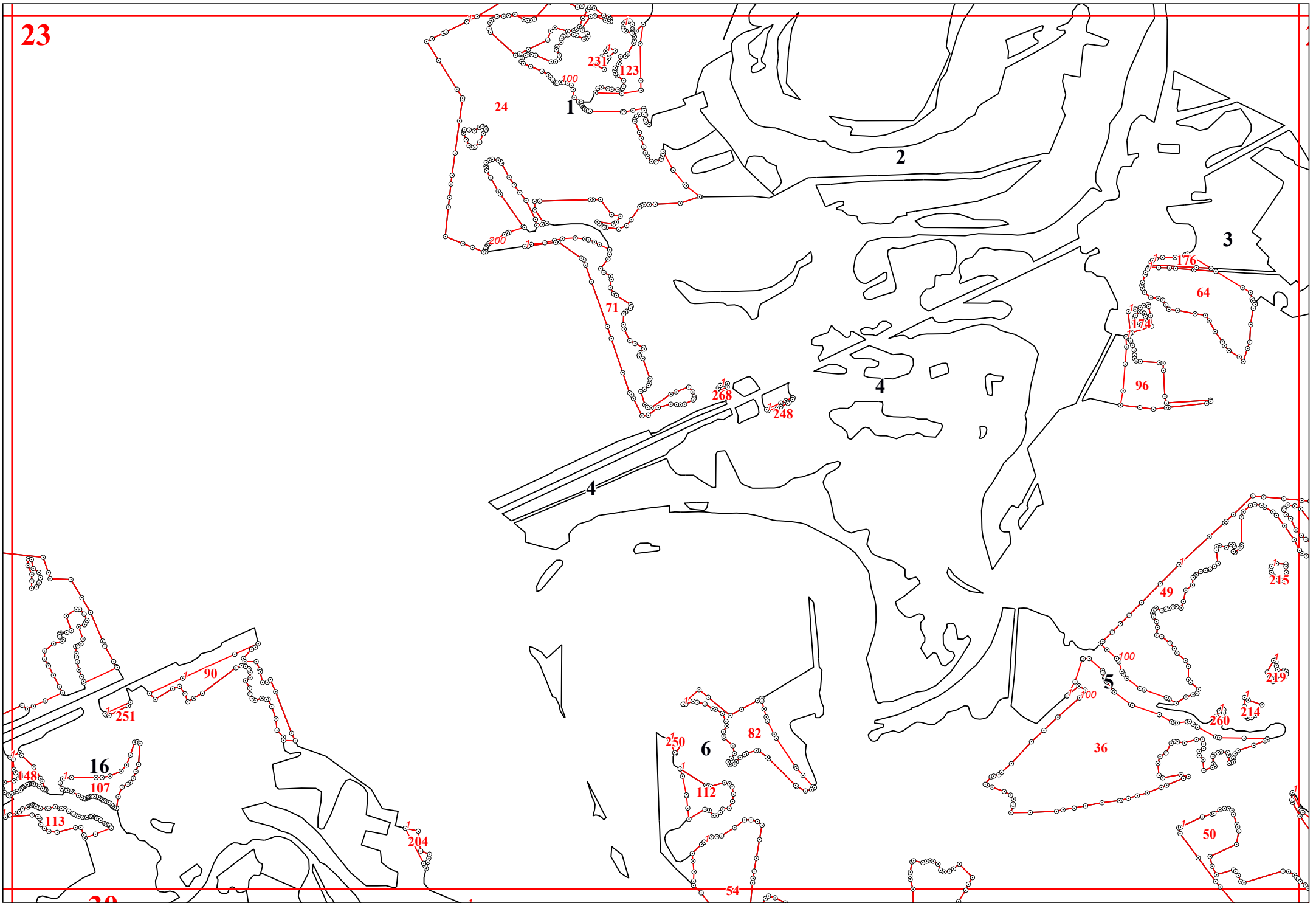
35

87

88







24

7

8

9

10

66

2

600

12

13

212

140

224

262

244

179

205

48

11

6

66

157

162

10

1500

200

134

600

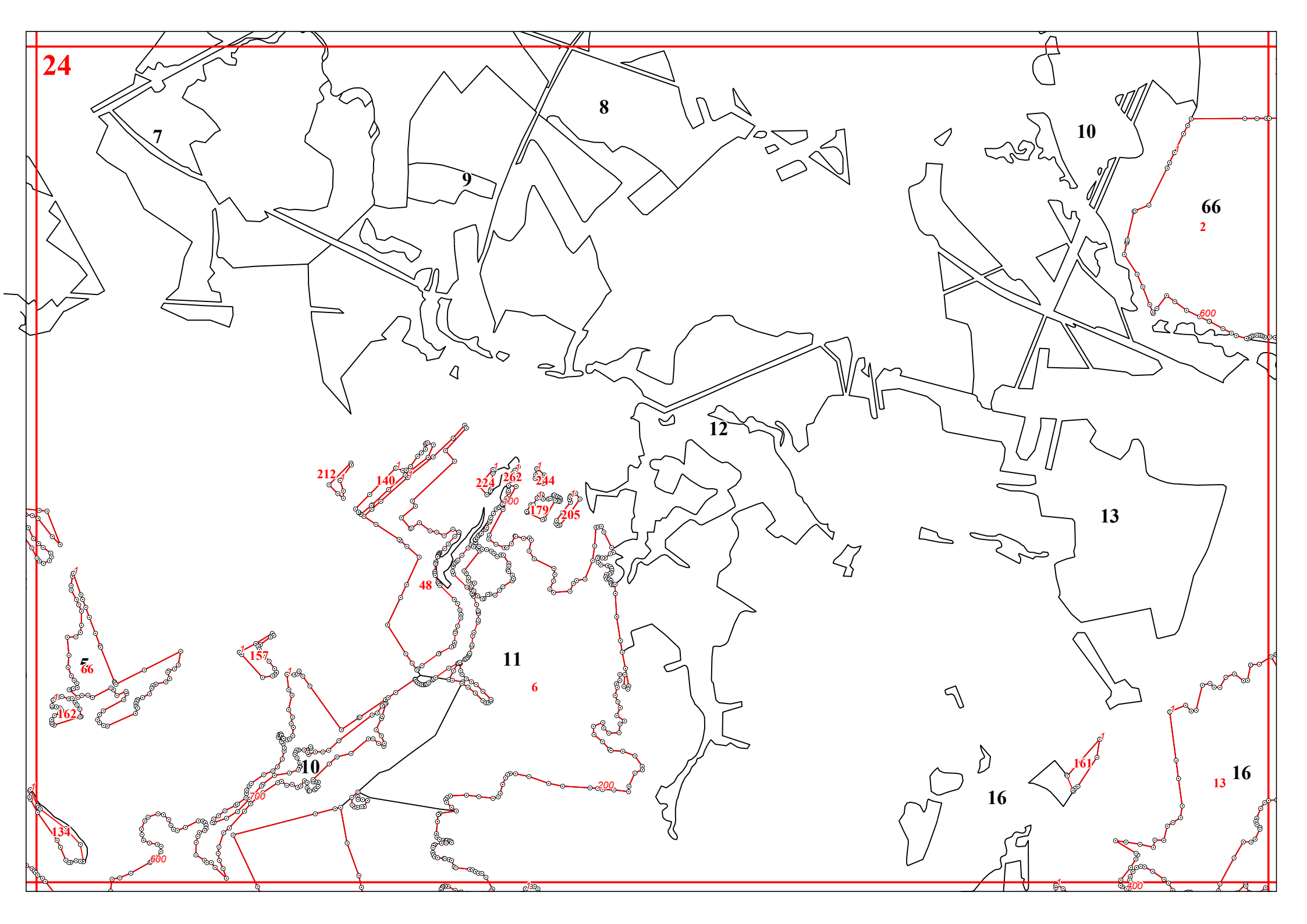
161

16

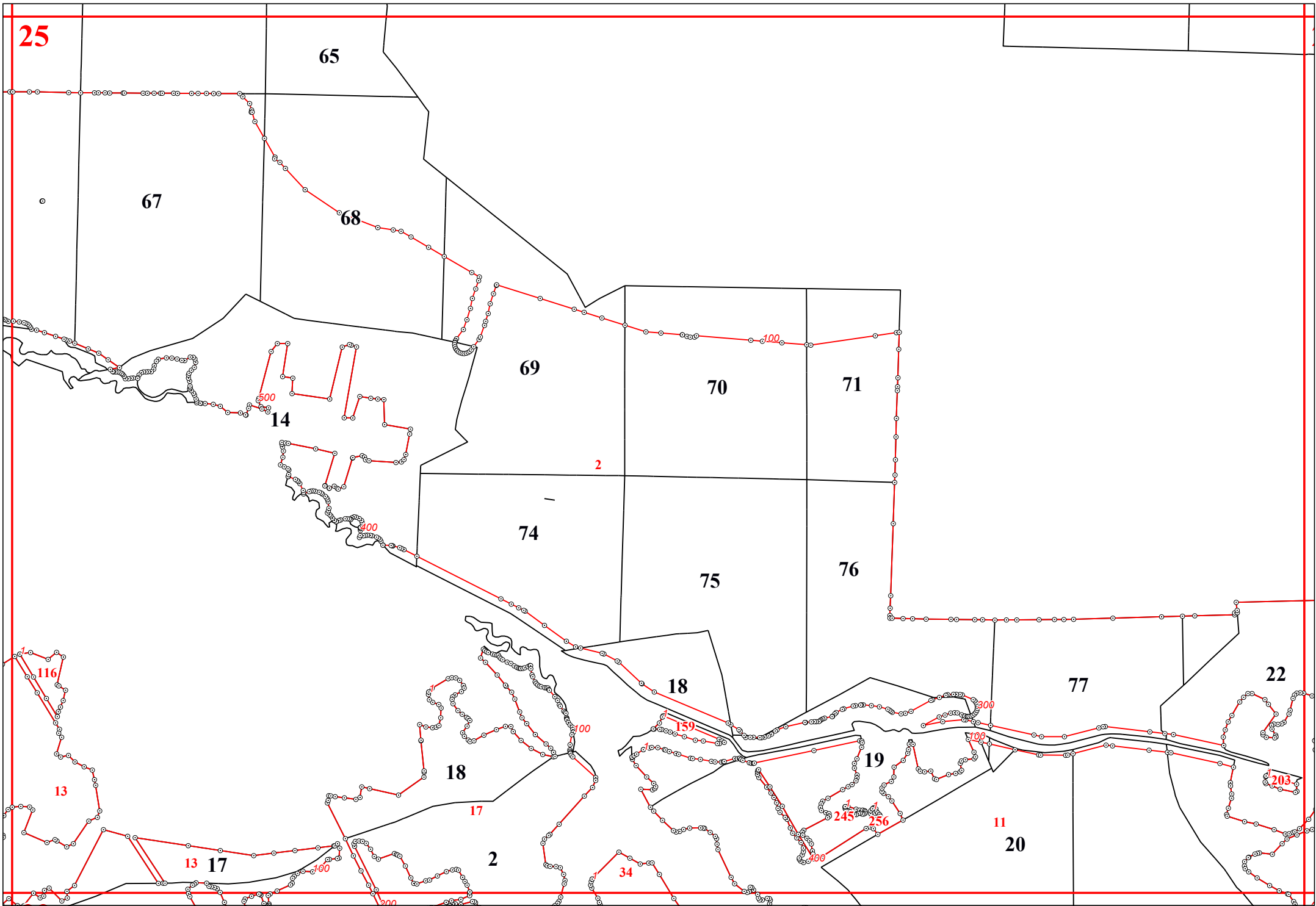
13

16

300

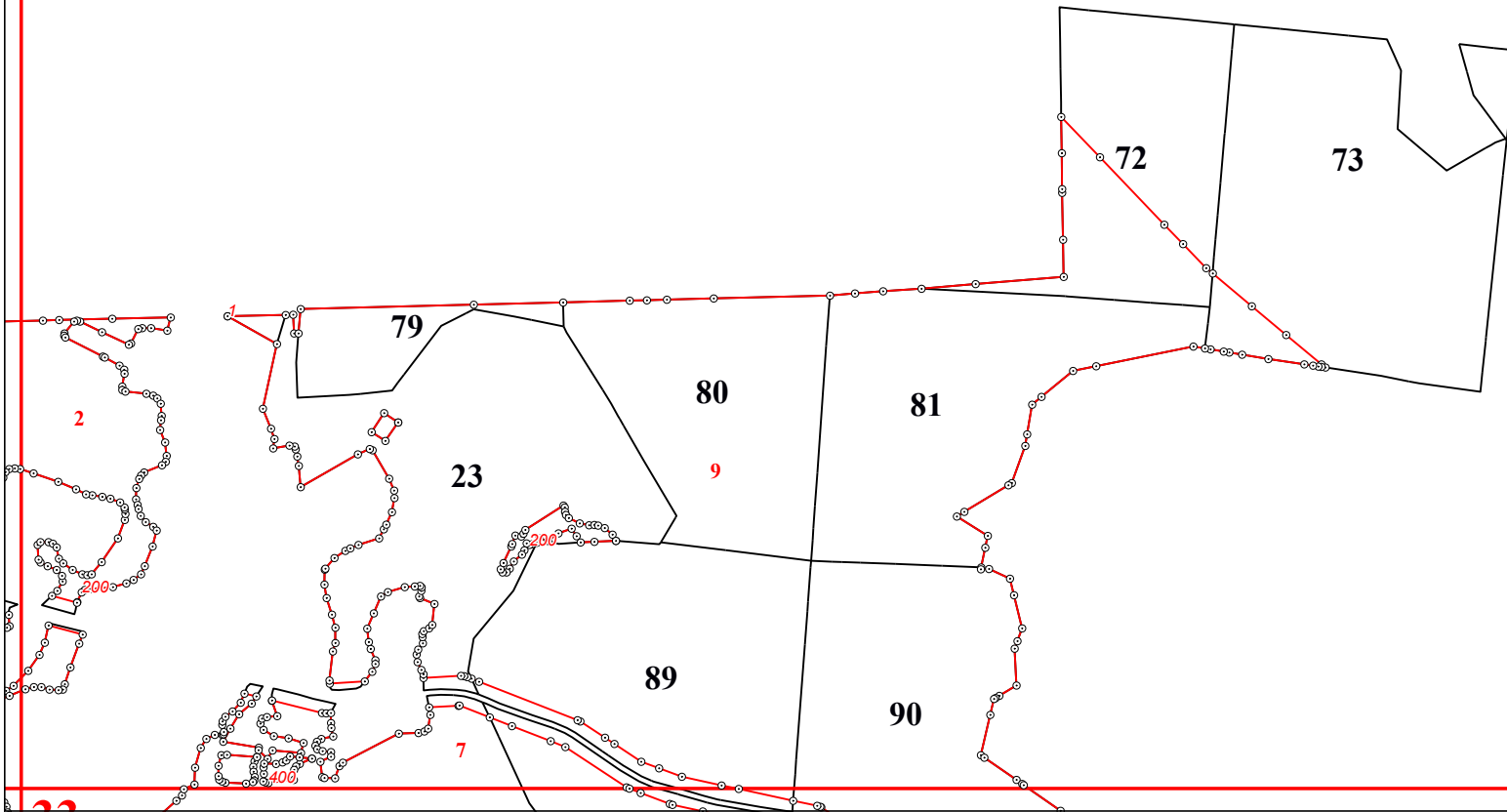




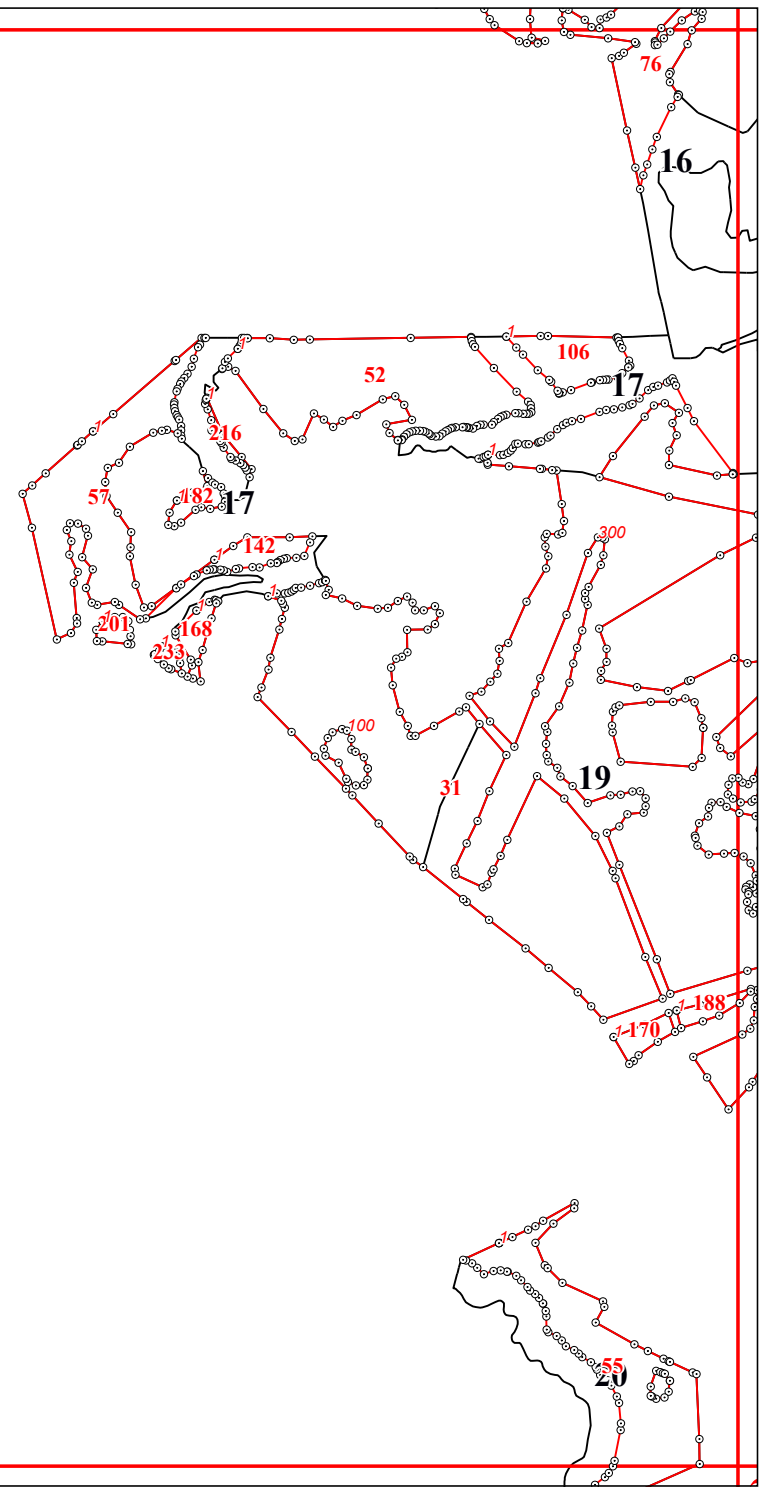


26

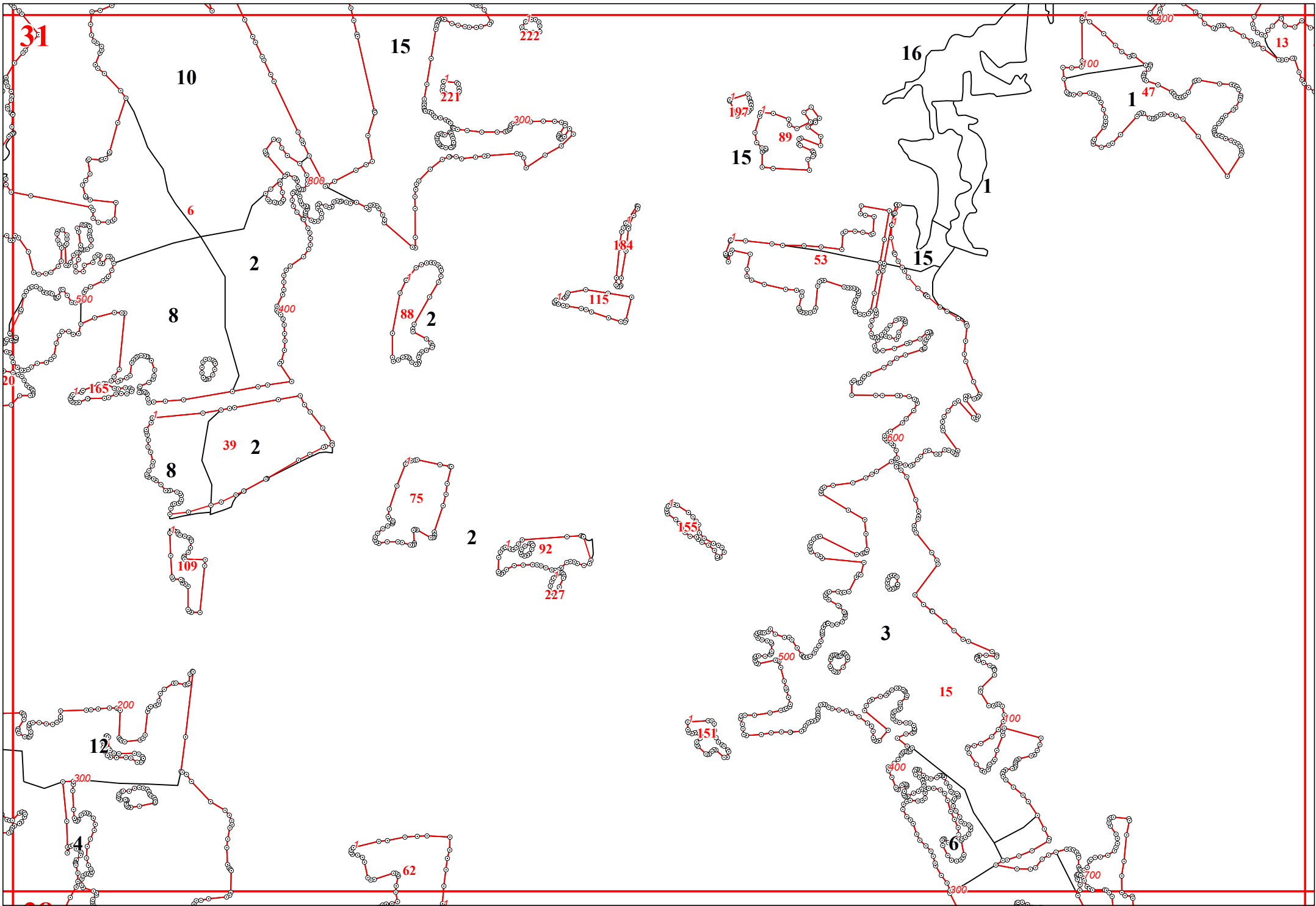
72



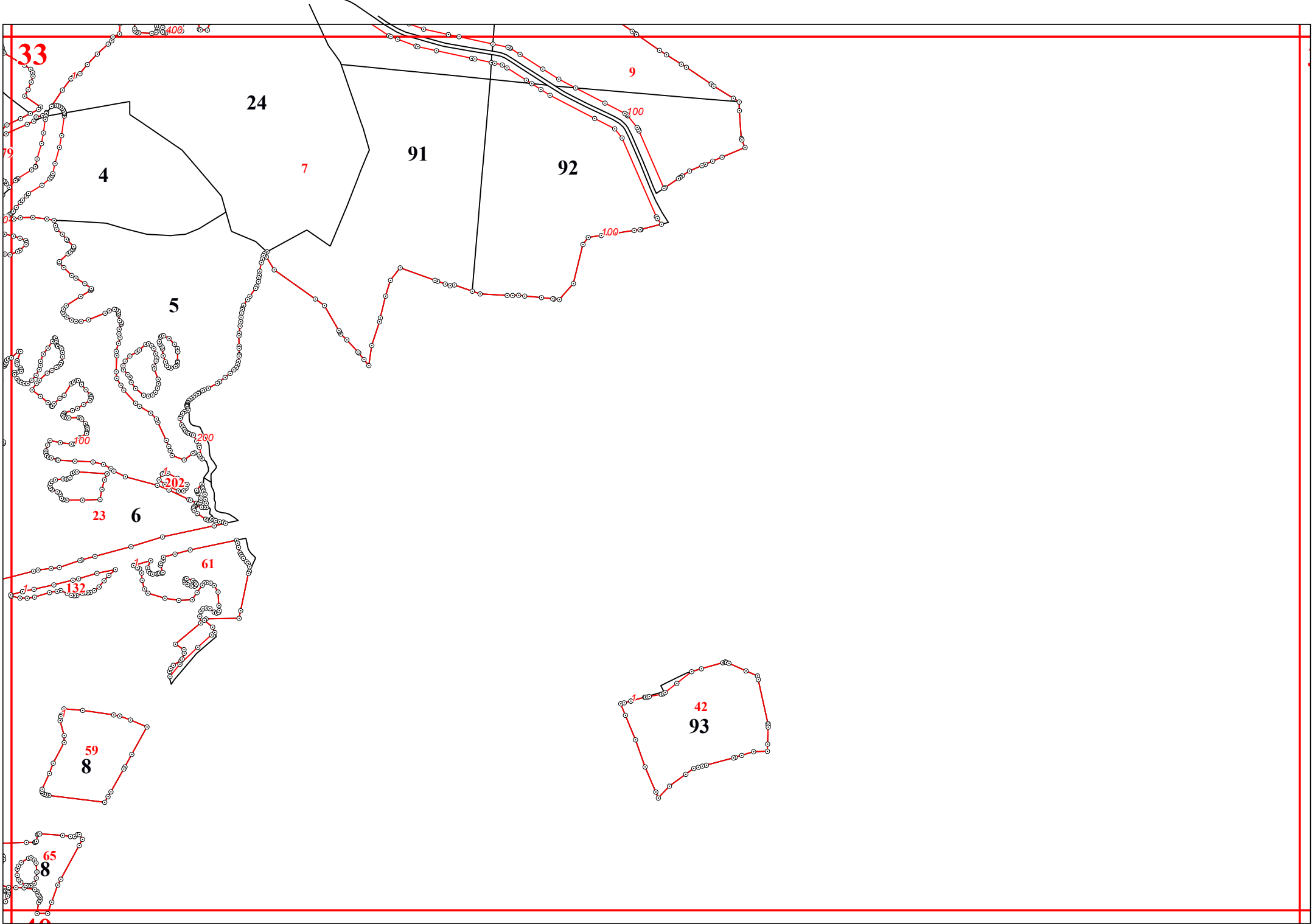
26



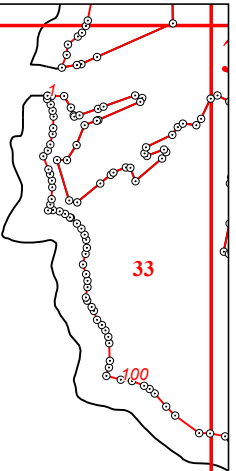




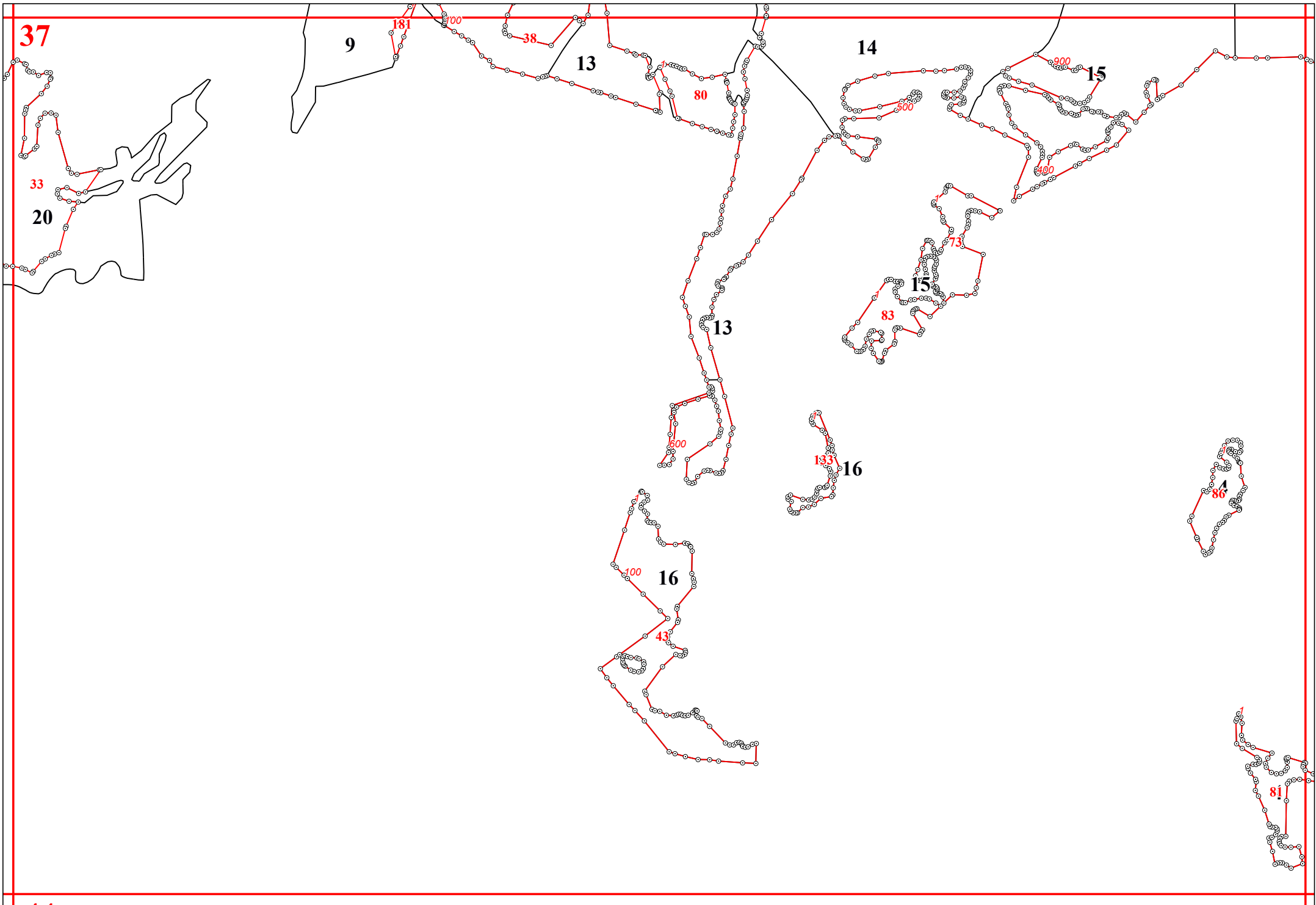




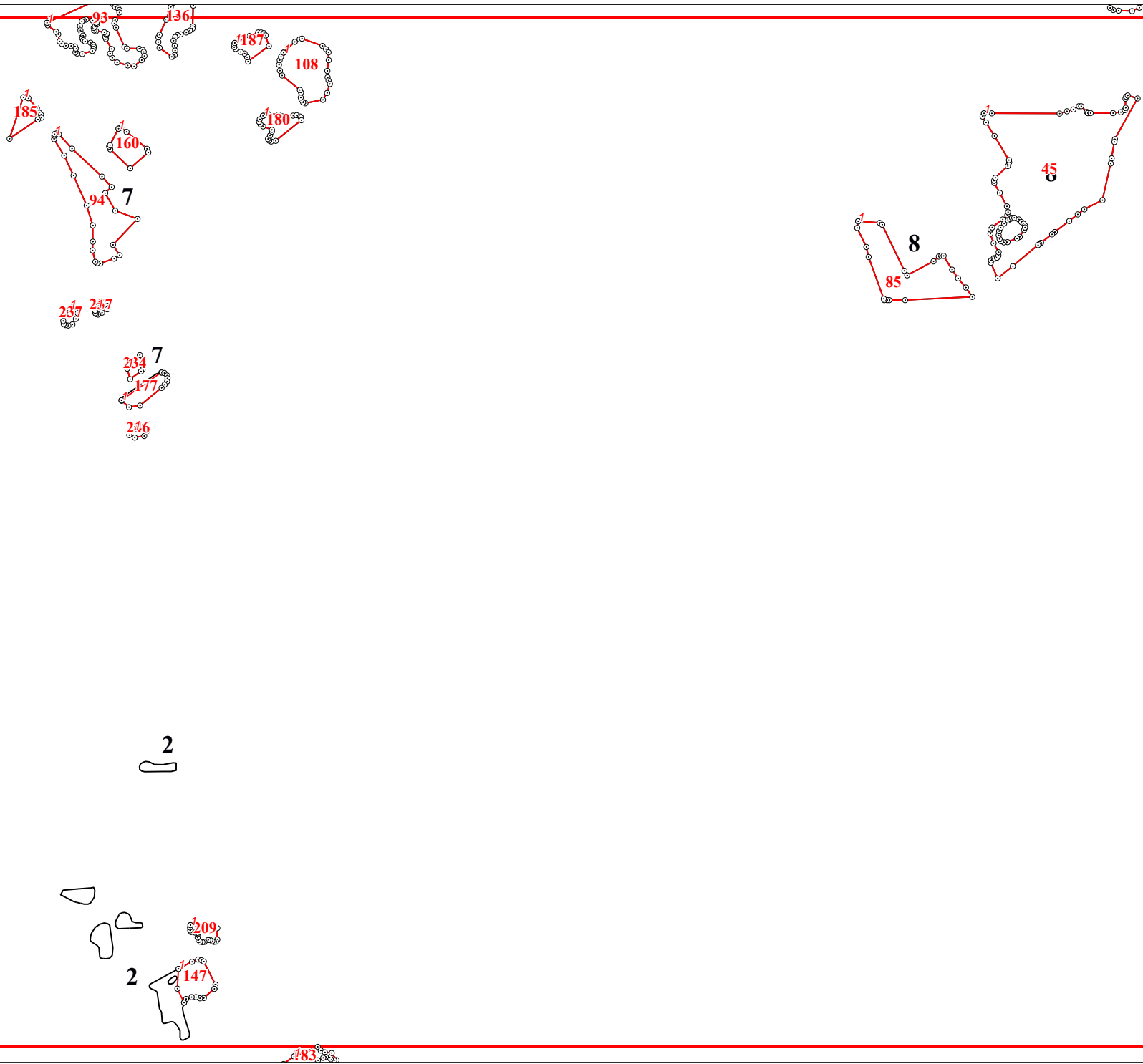
36



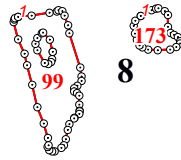
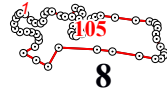
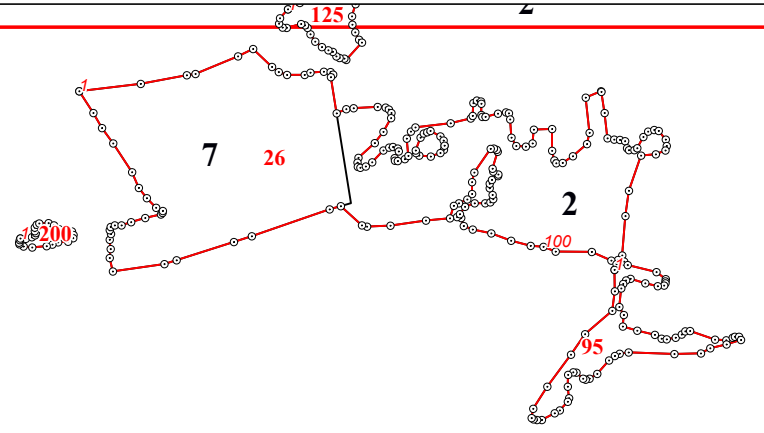


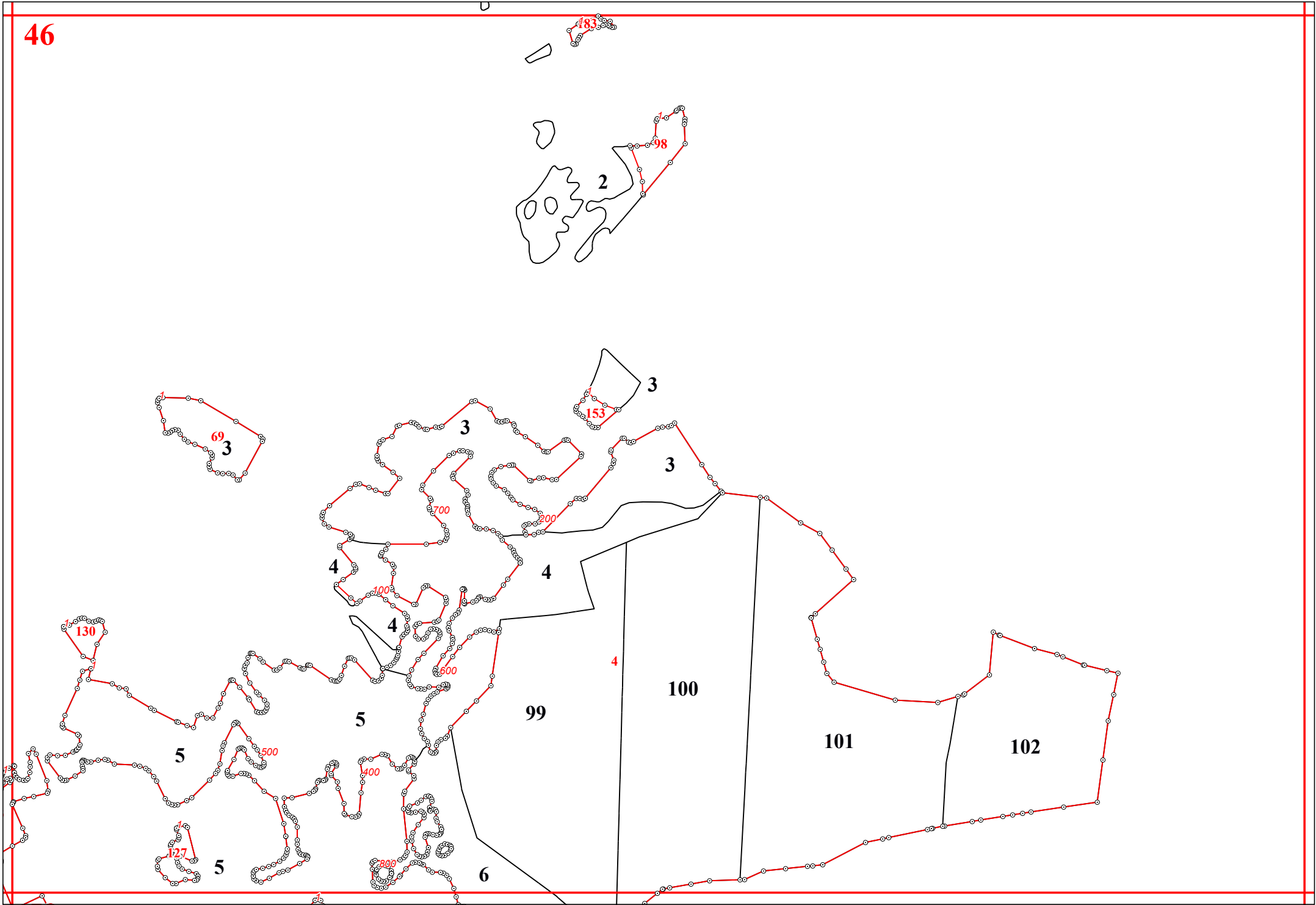






45<sup>o</sup><sub>4</sub>





19  
131  
2

