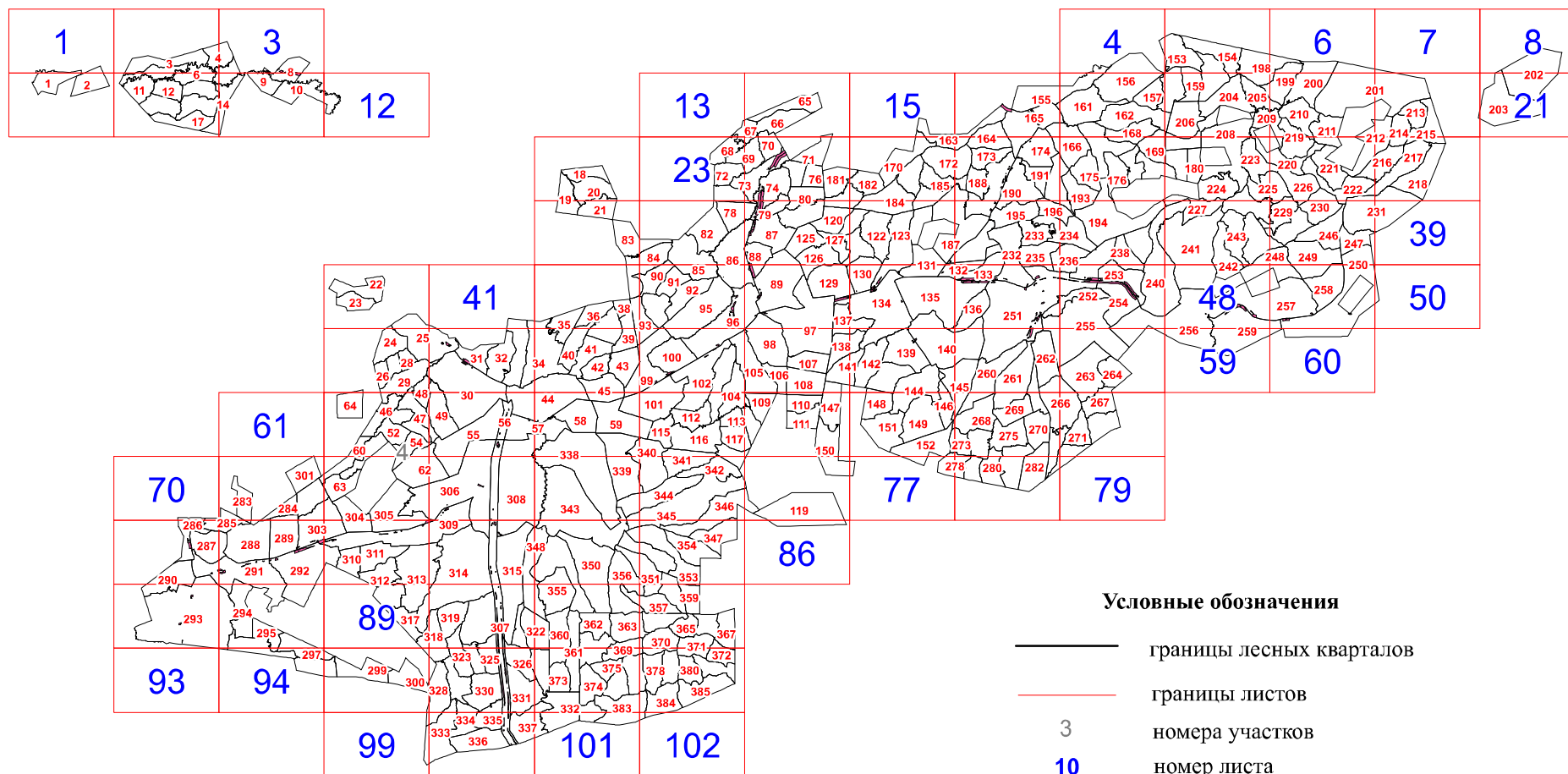









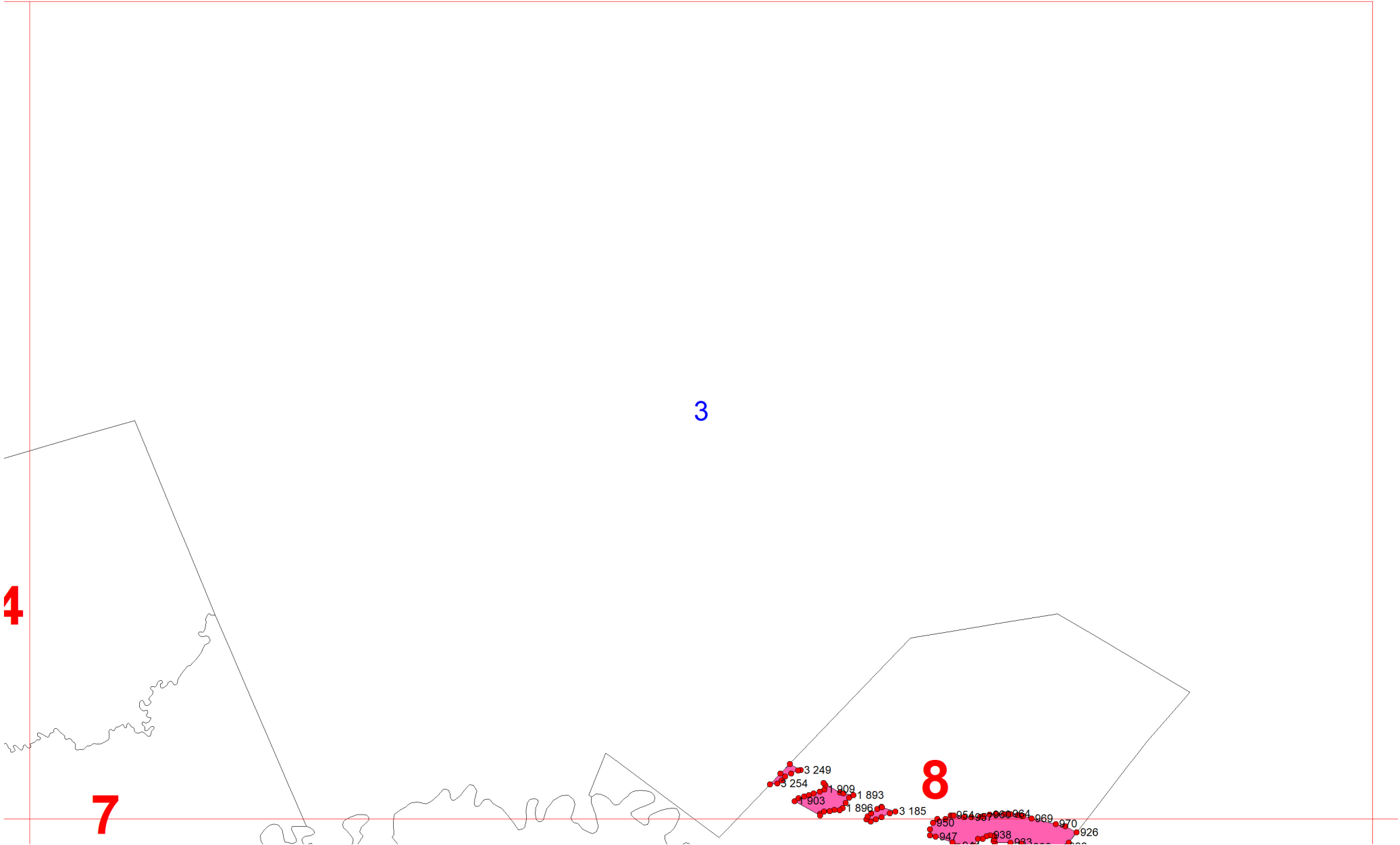
Графическое описание местоположения границ земель, на которых располагаются леса, выполняющие функции защиты природных и иных объектов (леса, расположенные в защитных полосах лесов), на территории Юргинского сельского участкового лесничества Юргинского лесничества Тюменской области

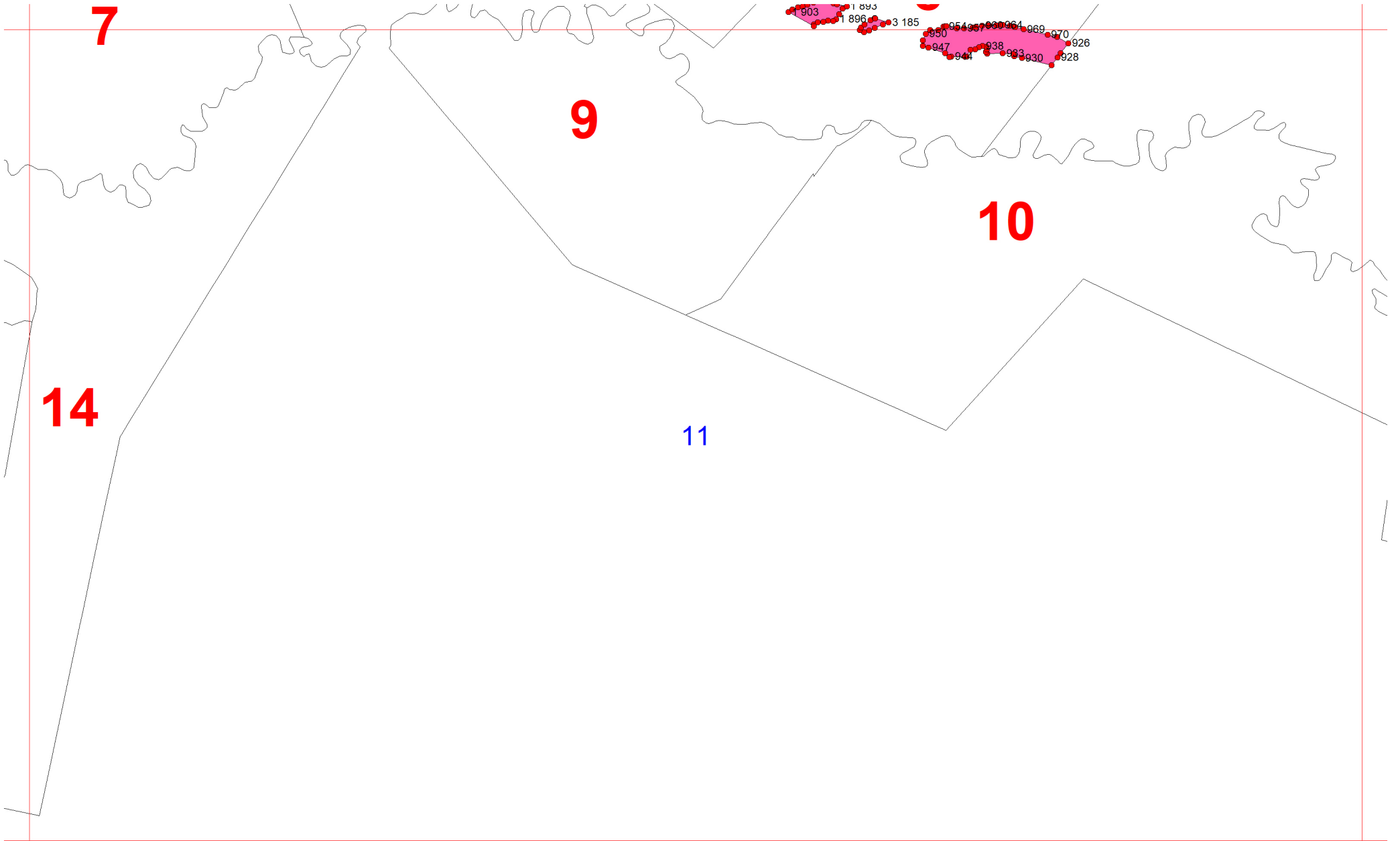
Приложение № 26 к приказу Рослесхоза от 28.02.2023 № 268

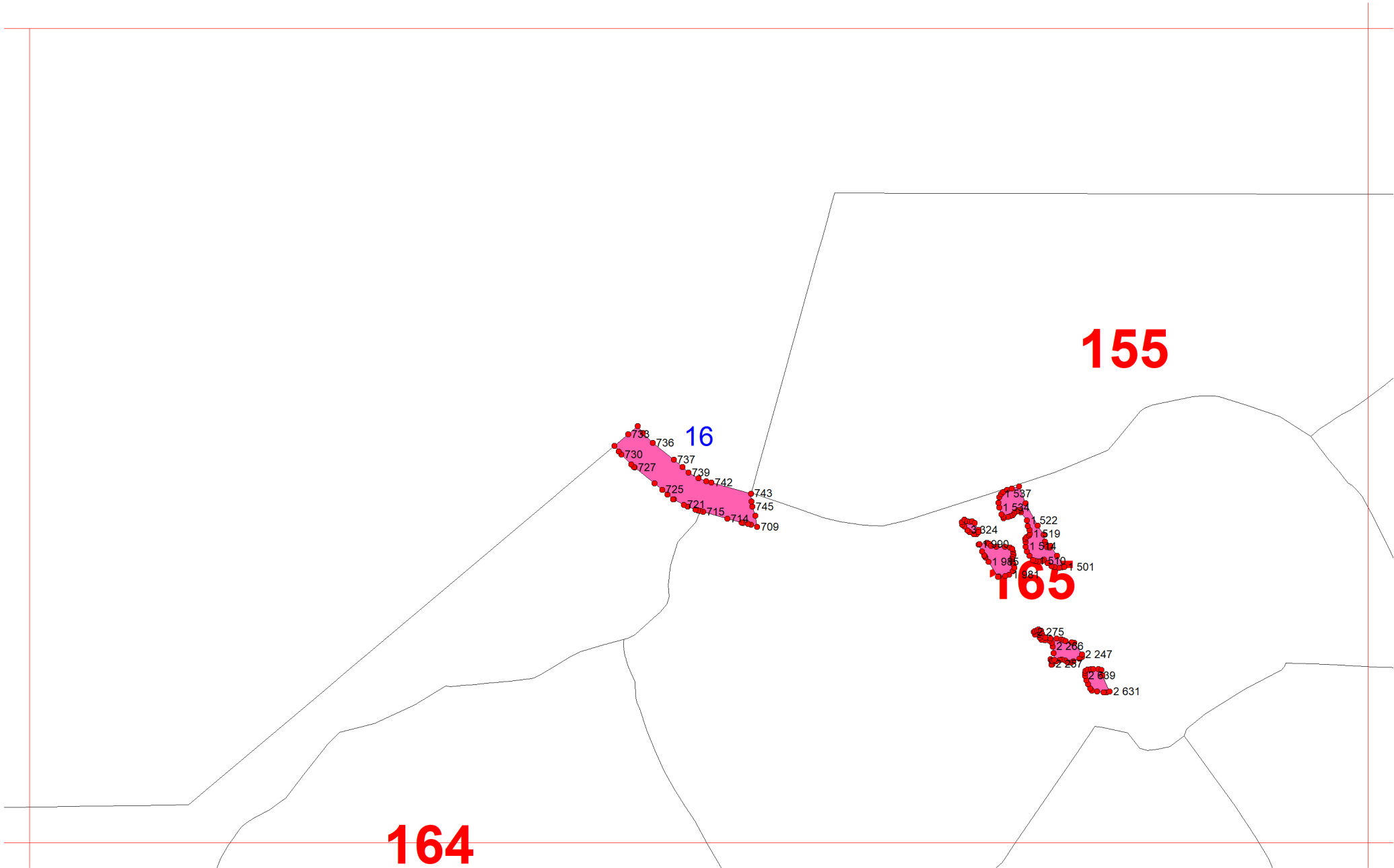


Условные обозначения

-  границы лесных кварталов
-  границы листов
-  номера участков
-  номер листа
-  номер квартала
-  границы категорий защитных лесов
-  номера характерных точек границ объекта







155

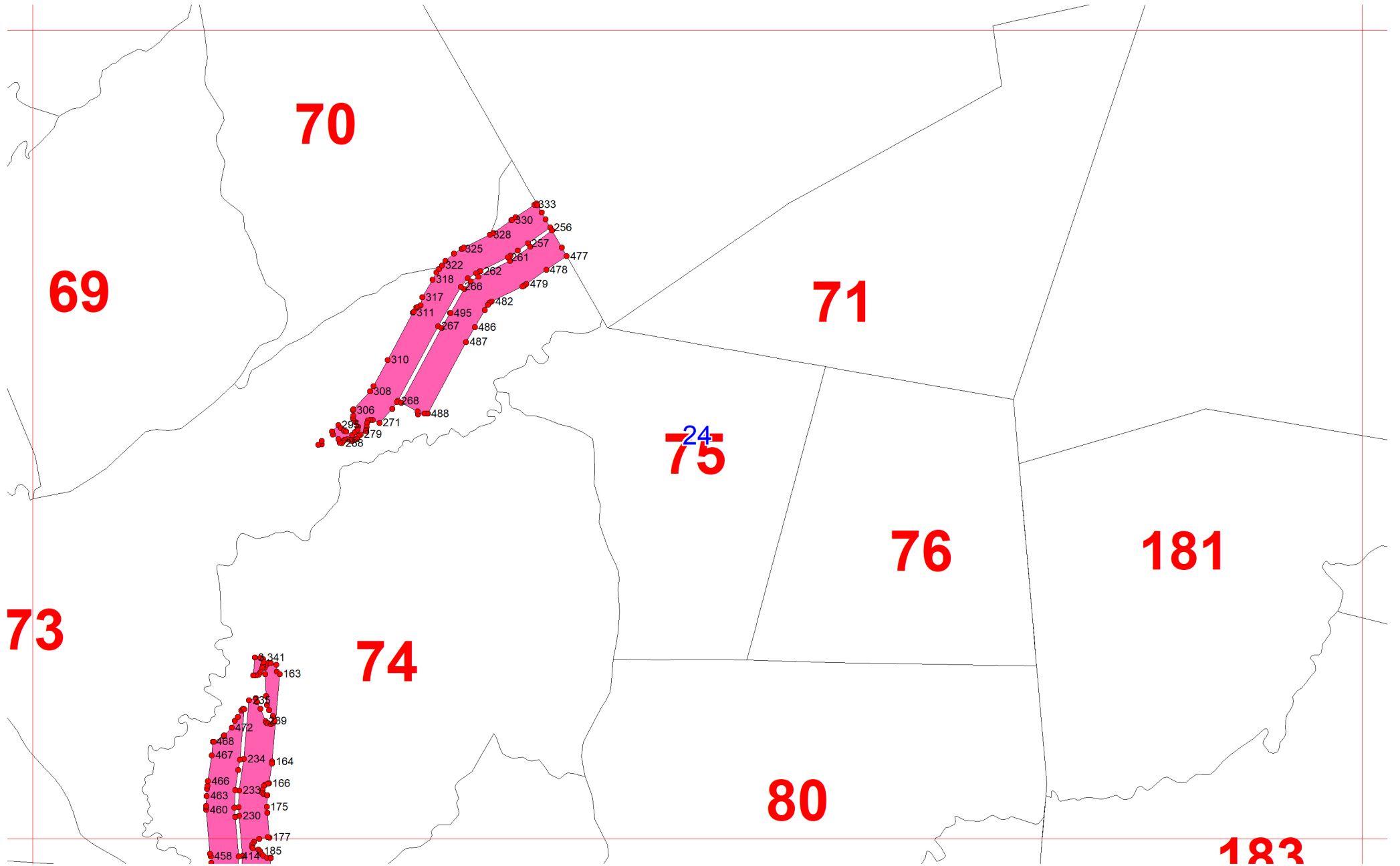
16

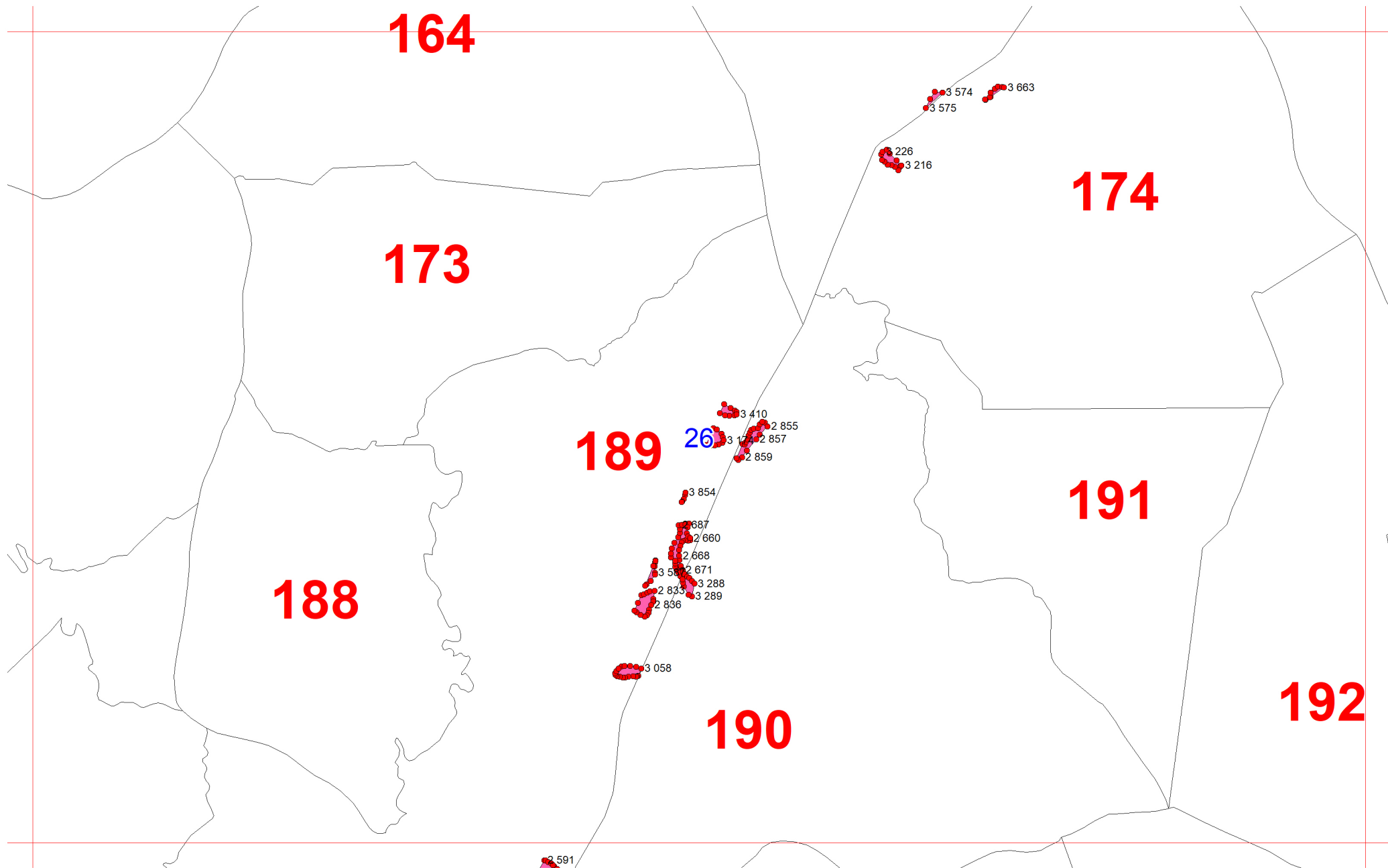
165

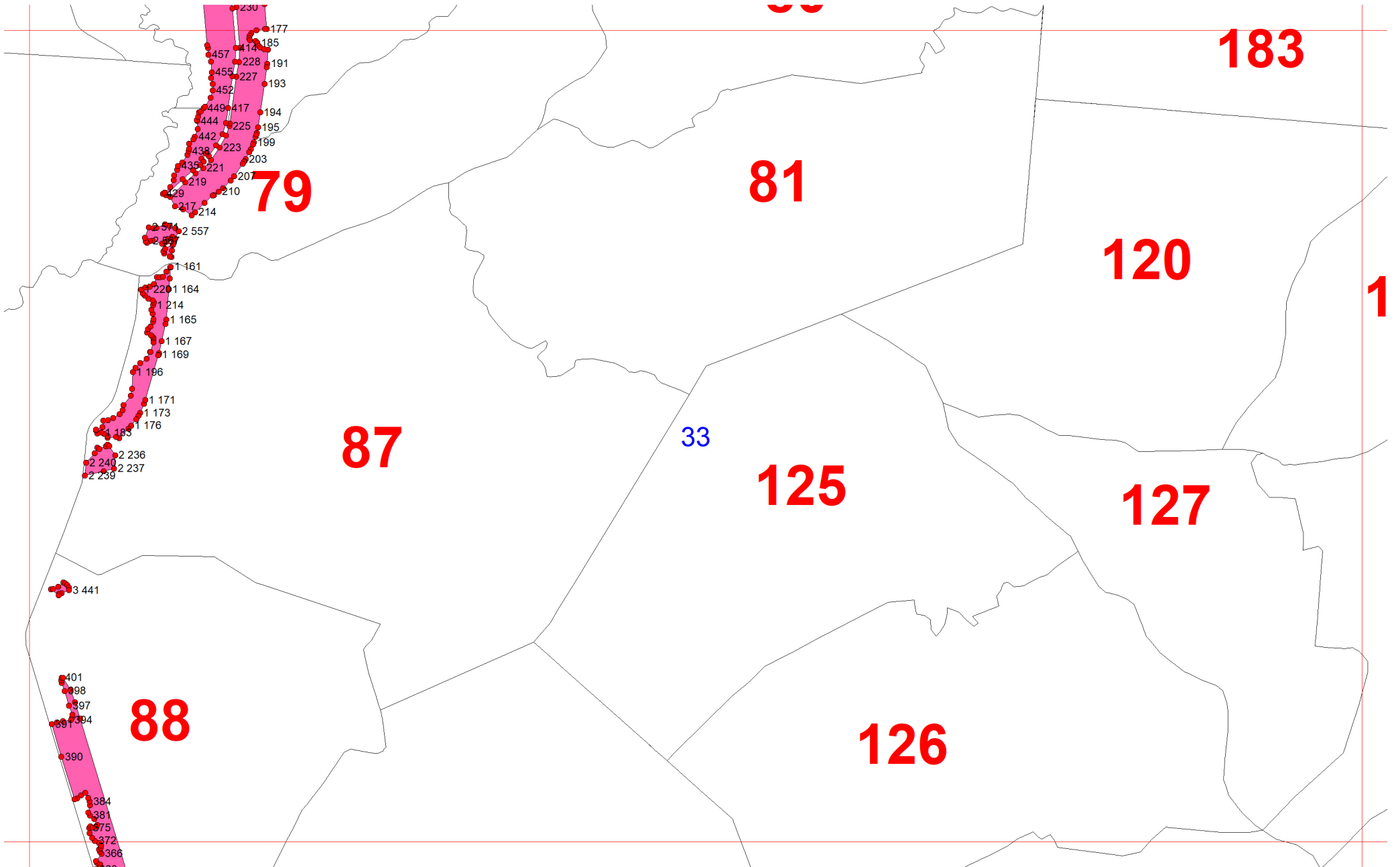
164

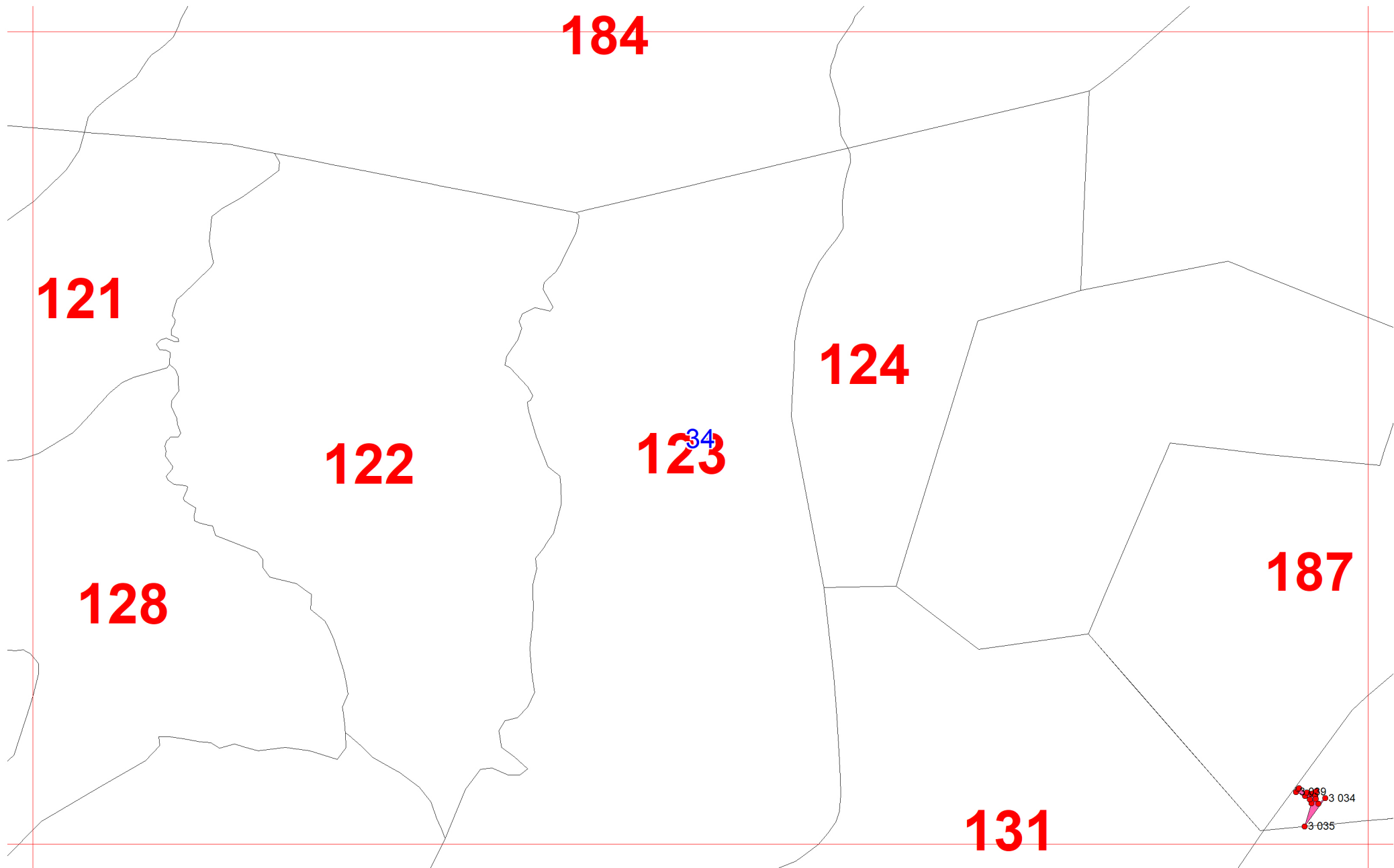
- 738
- 736
- 730
- 727
- 737
- 739
- 742
- 725
- 721
- 715
- 714
- 743
- 745
- 709

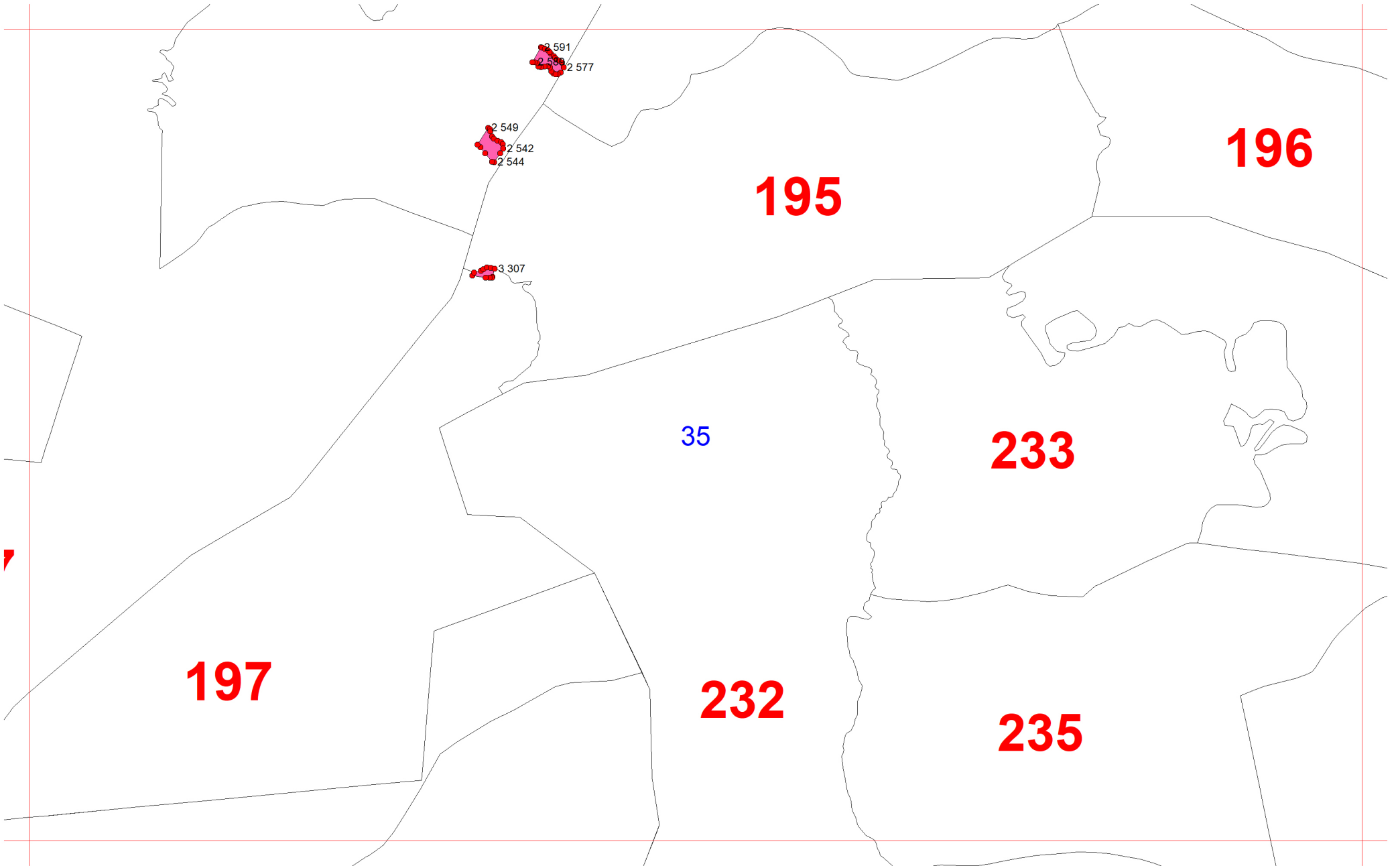
- 1537
- 1532
- 1522
- 1519
- 1517
- 1514
- 1510
- 1501
- 1990
- 1985
- 1981
- 2275
- 2286
- 2247
- 2287
- 2689
- 2631











2591
2577

2549
2542
2544

3307

195

196

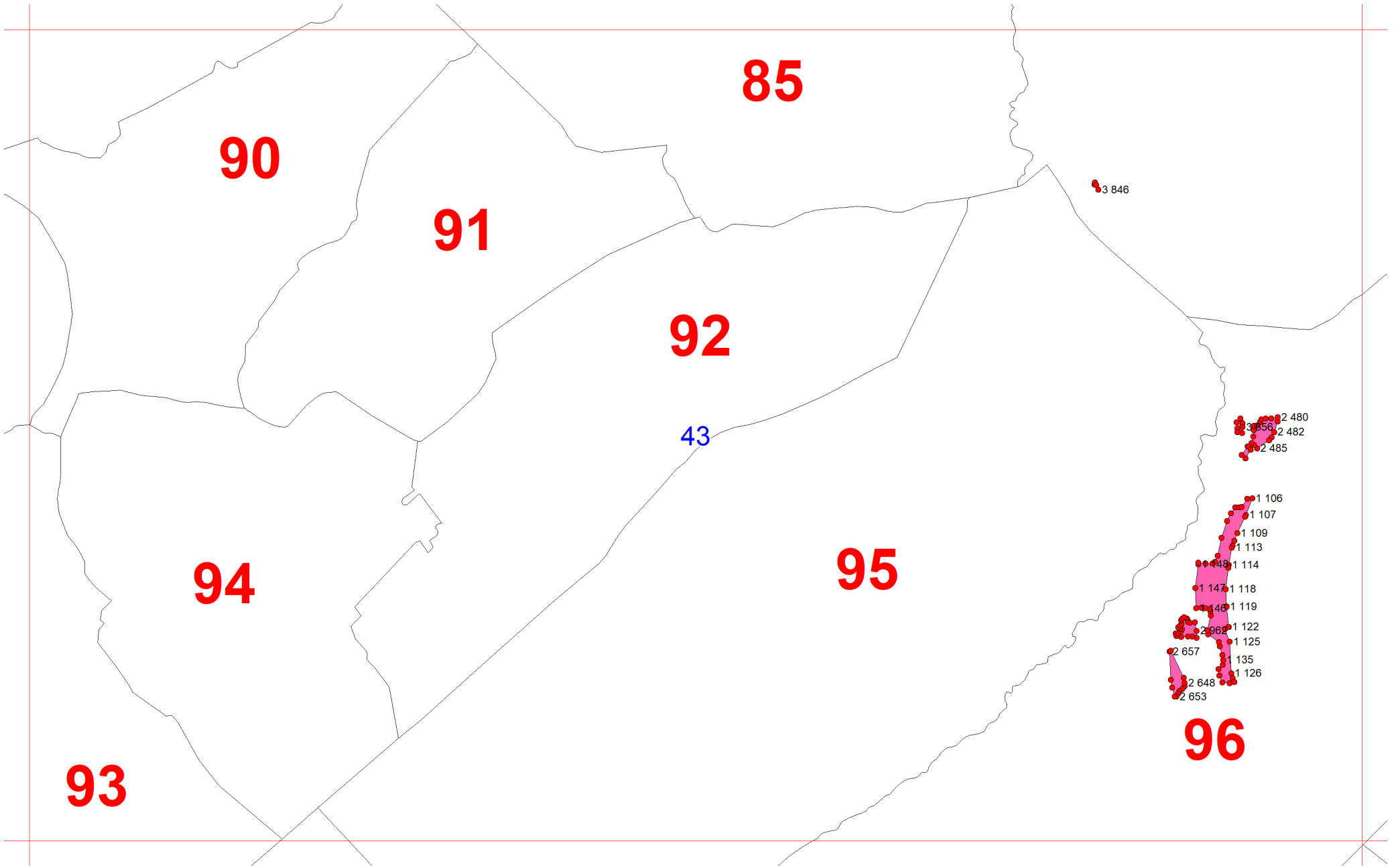
35

233

197

232

235



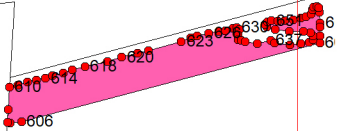
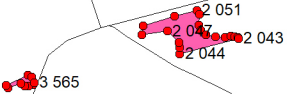
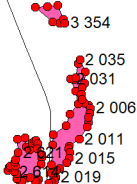
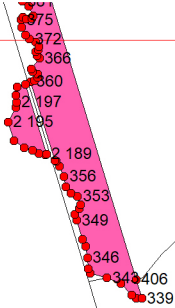
89

129

44

137

97



130

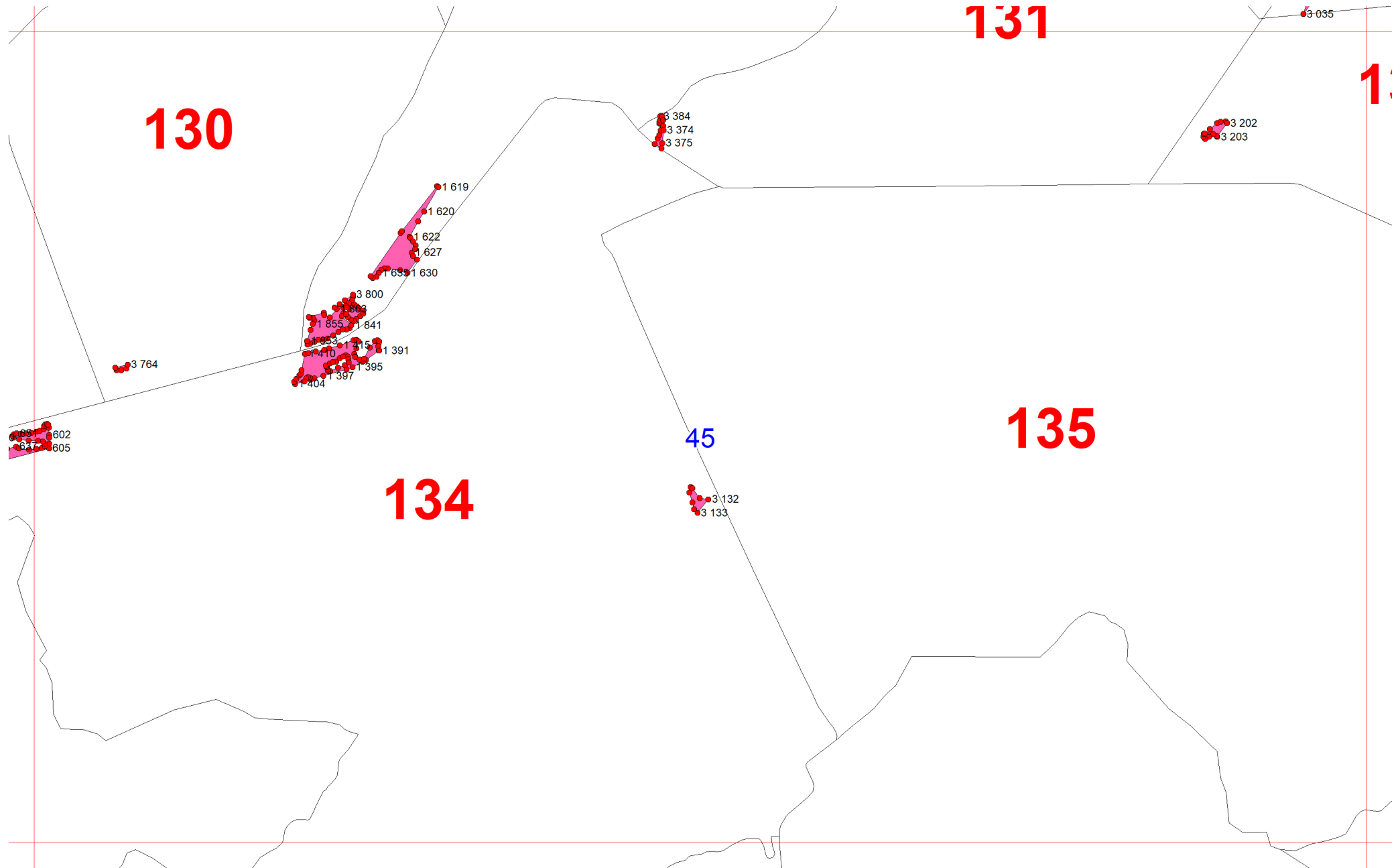
131

132

135

134

45



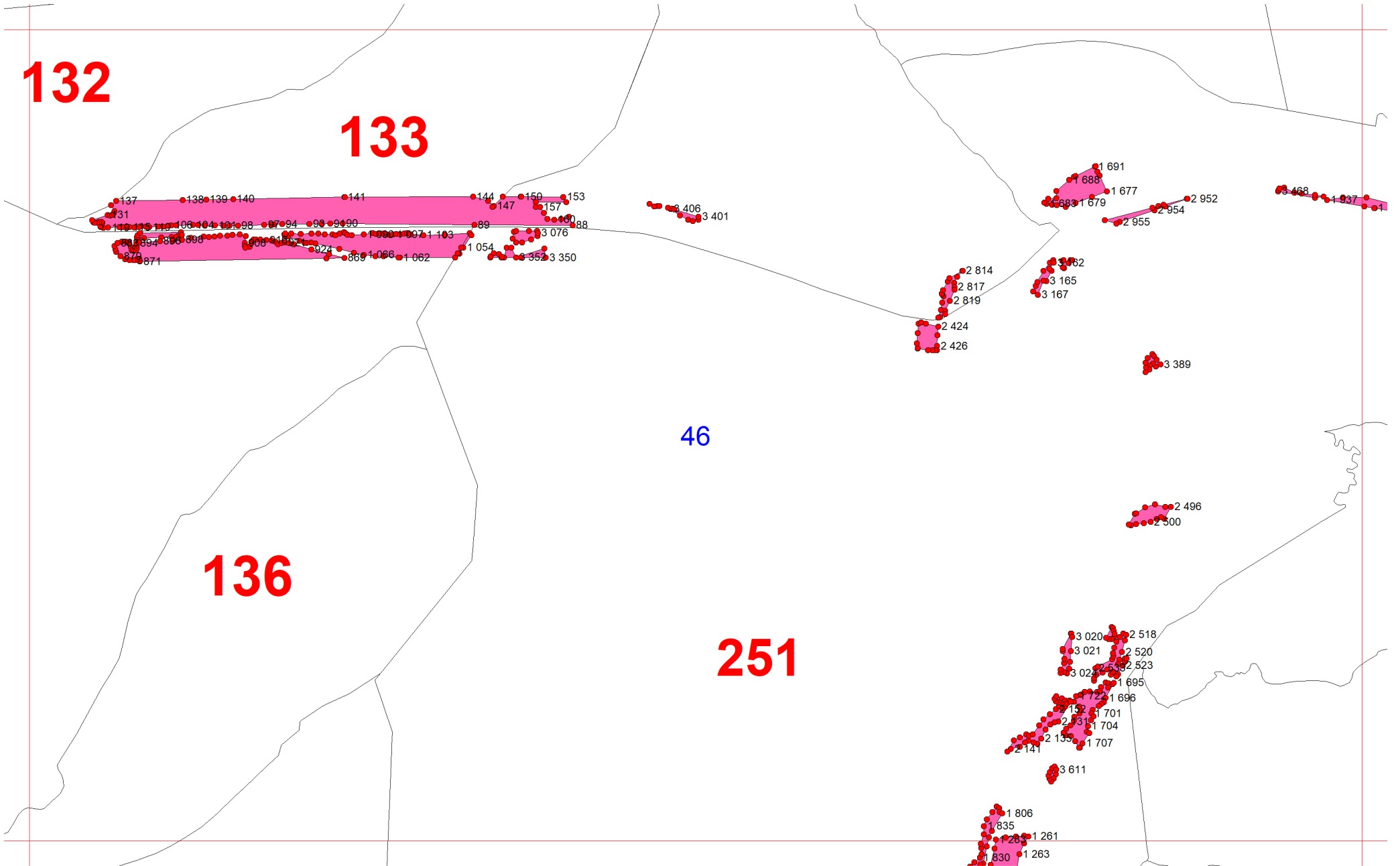
132

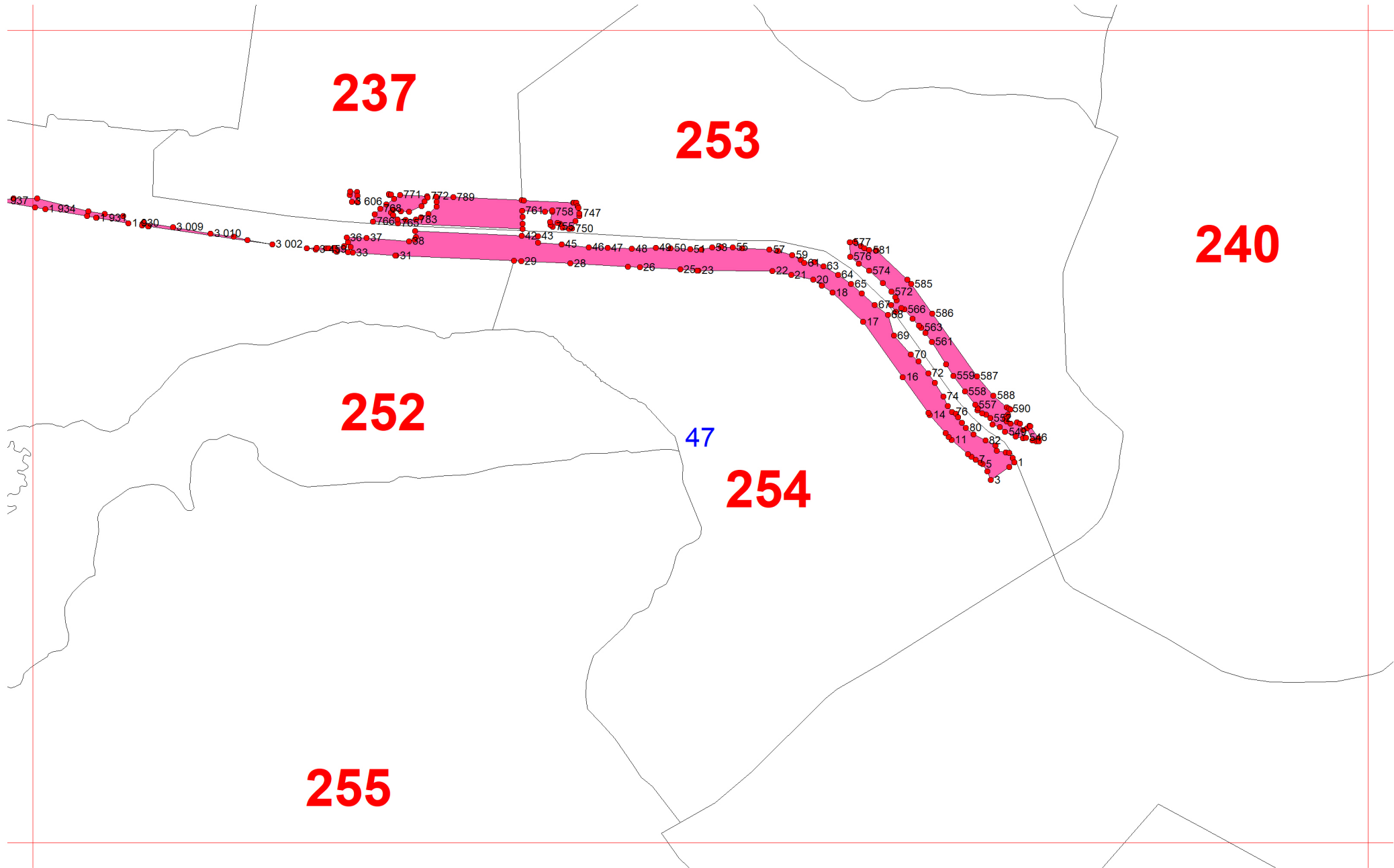
133

136

46

251





237

253

240

252

47

254

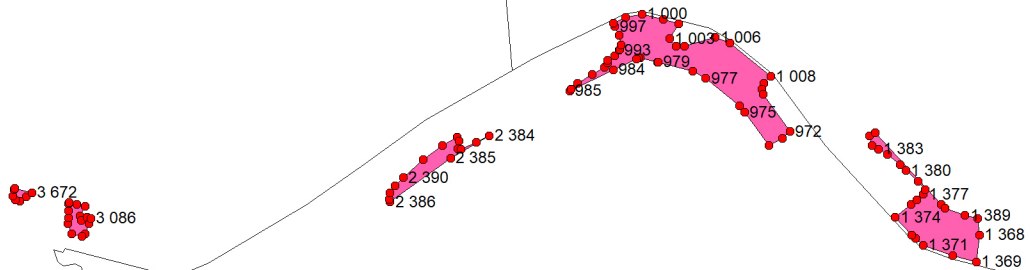
255

242

48

256

259



250

258

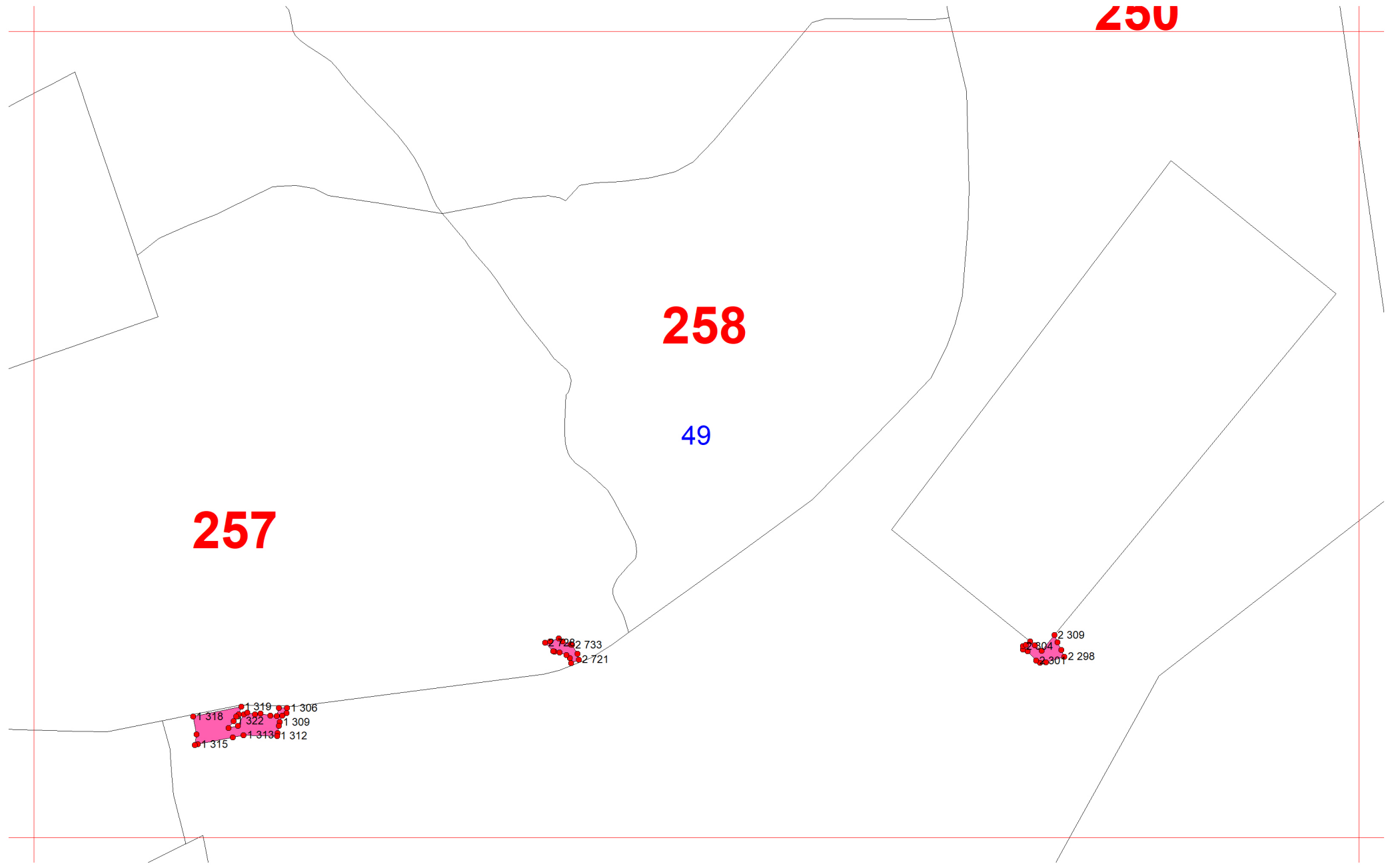
49

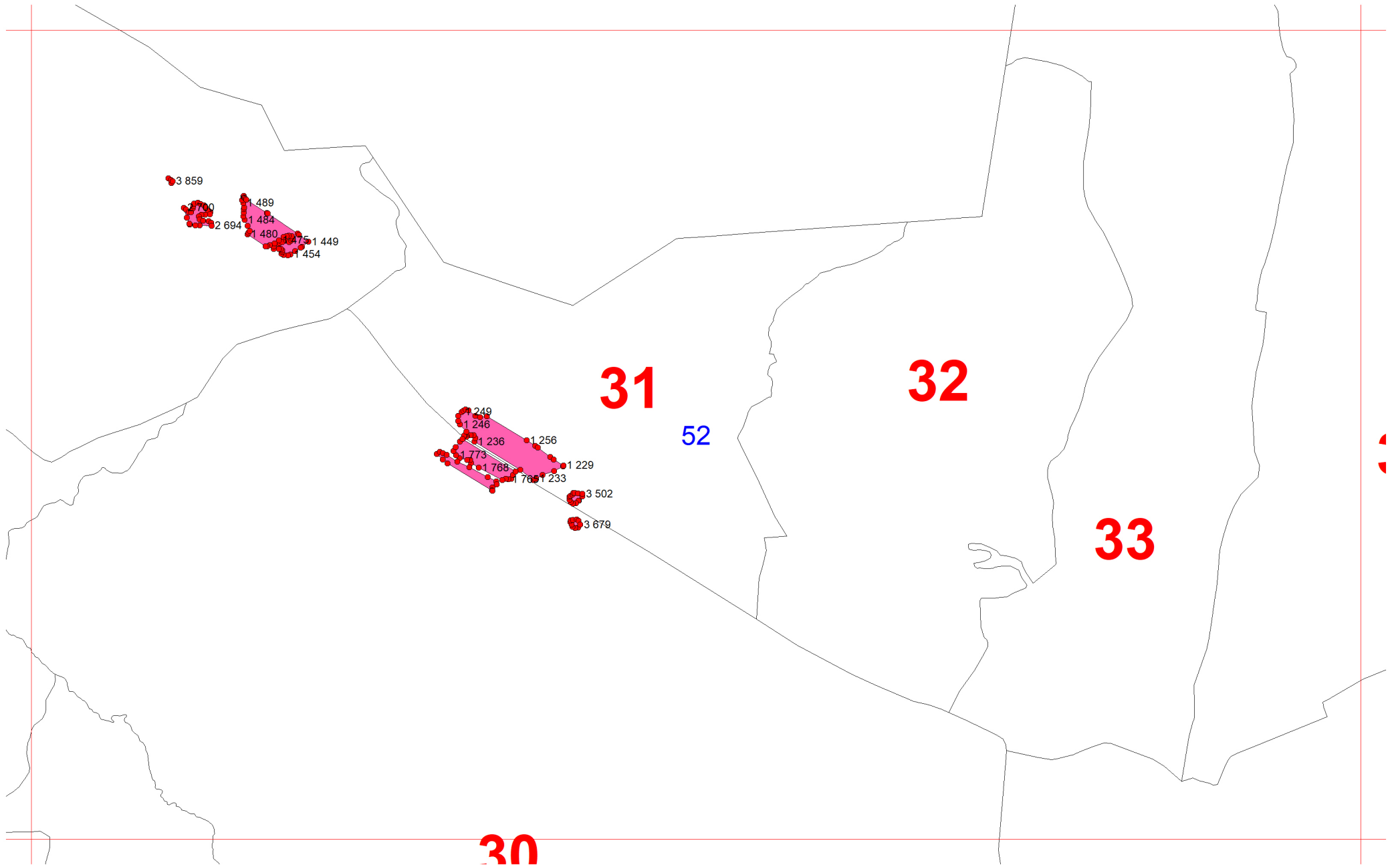
257

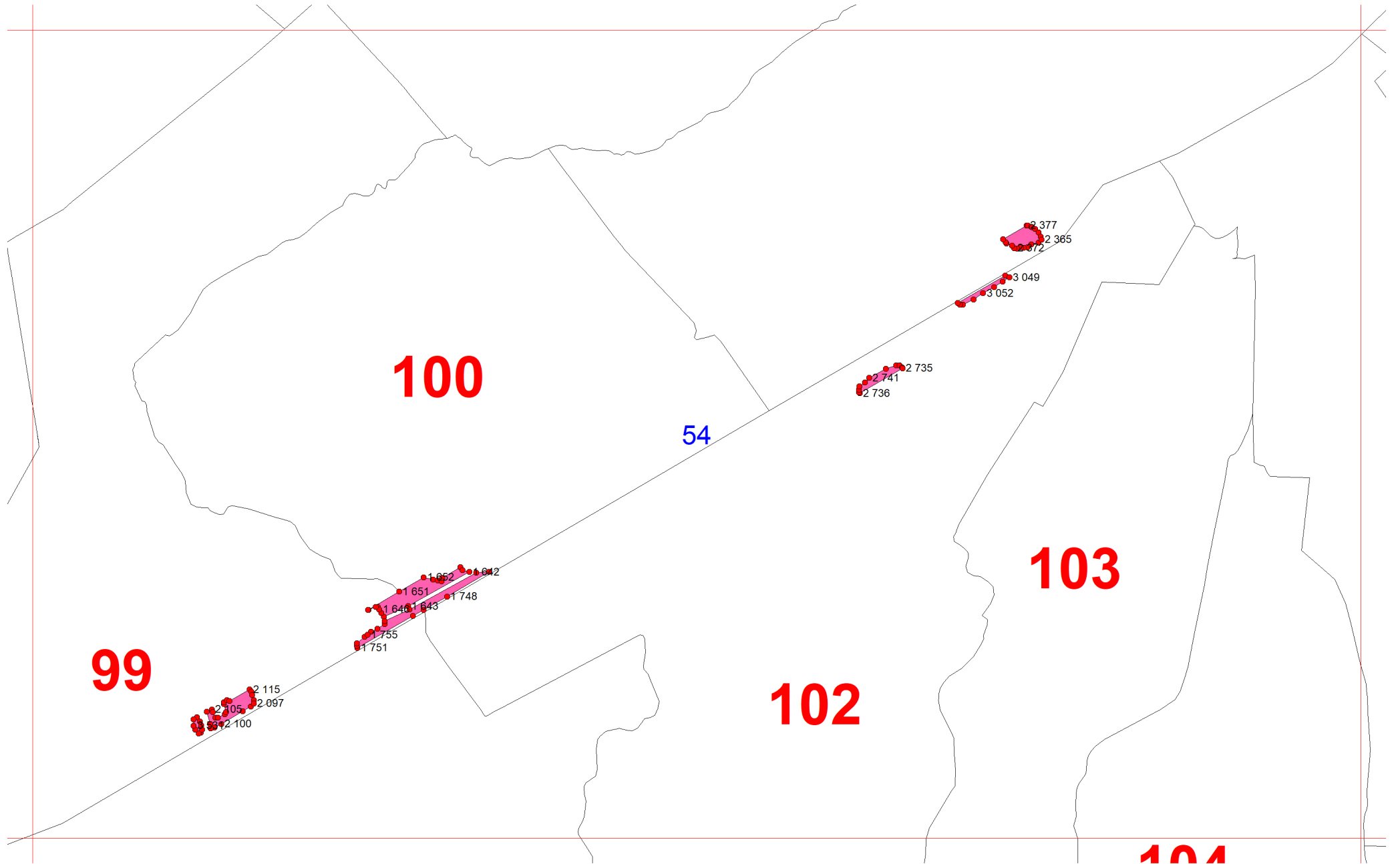
2 722 733
2 721

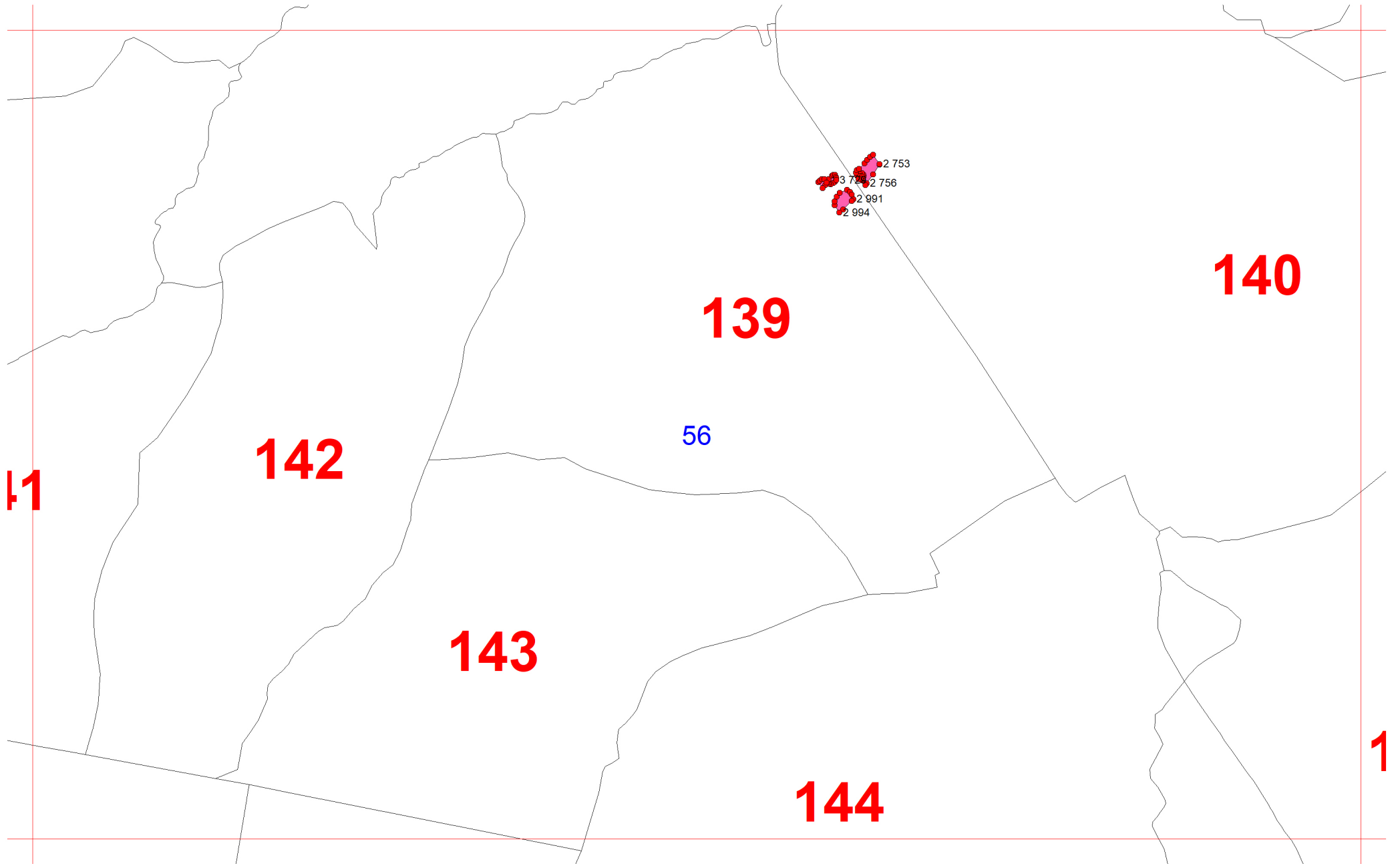
2 309
2 298
2 301

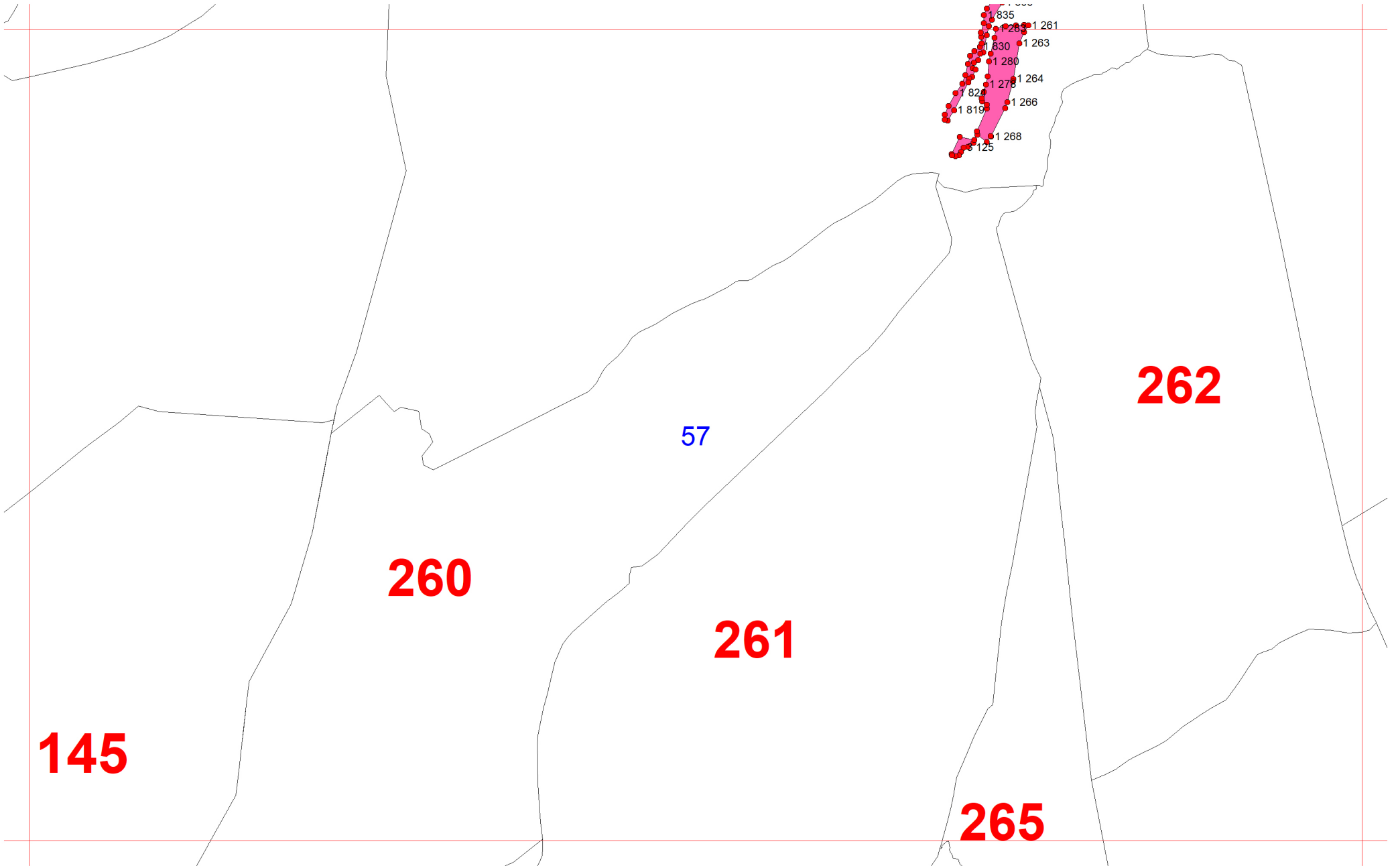
1 319 1 306
1 318 1 322 1 309
1 315 1 313 1 312

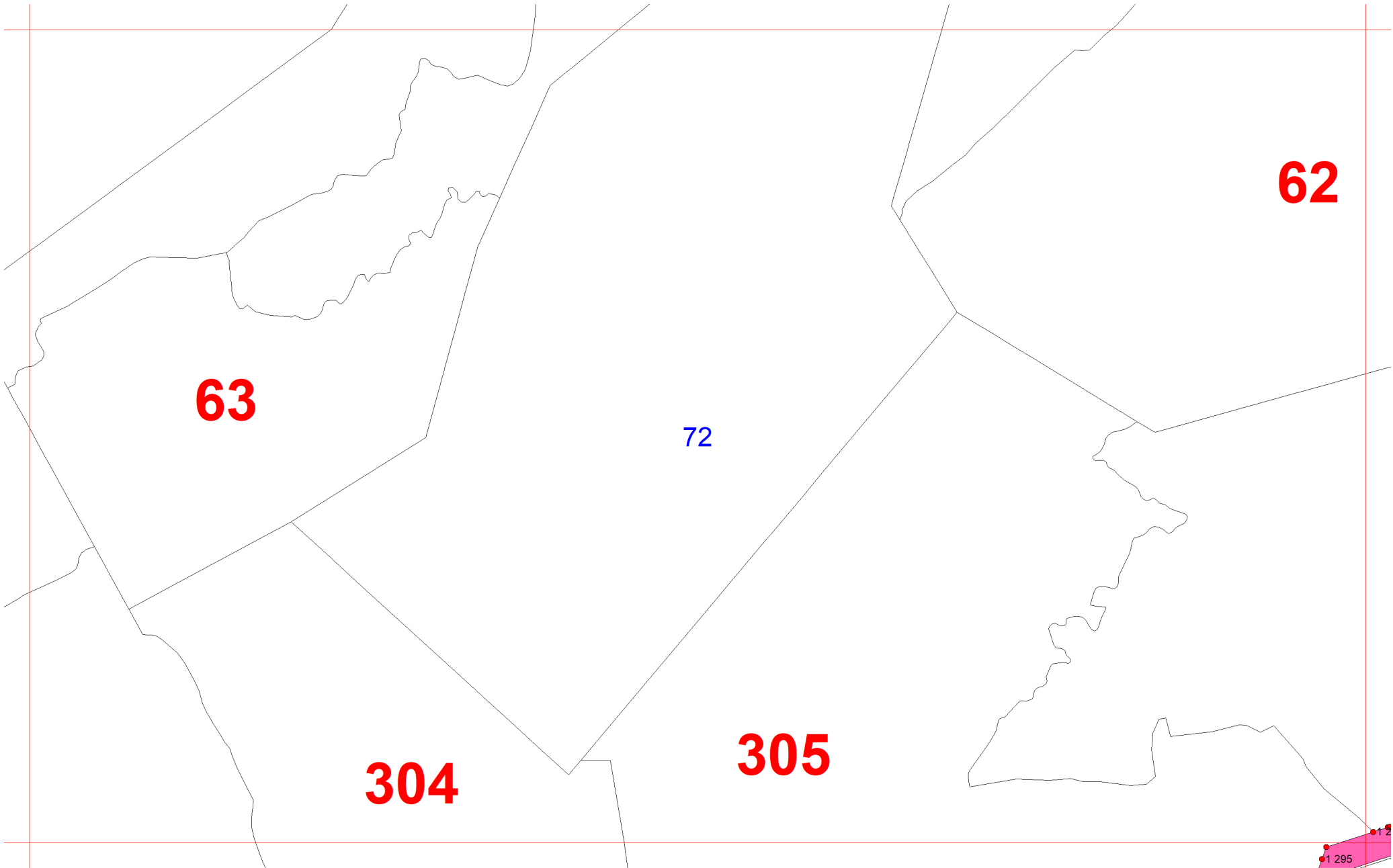


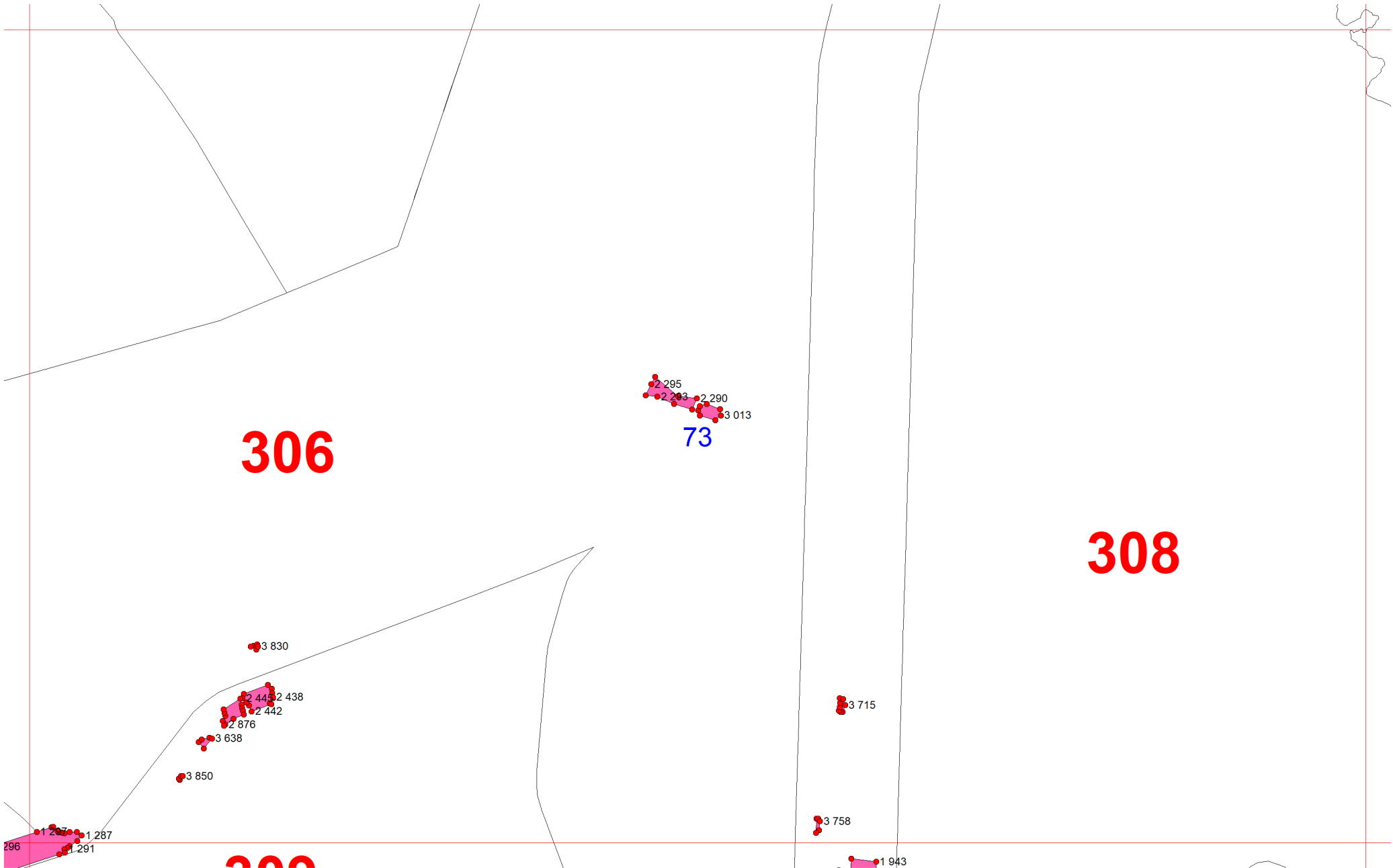


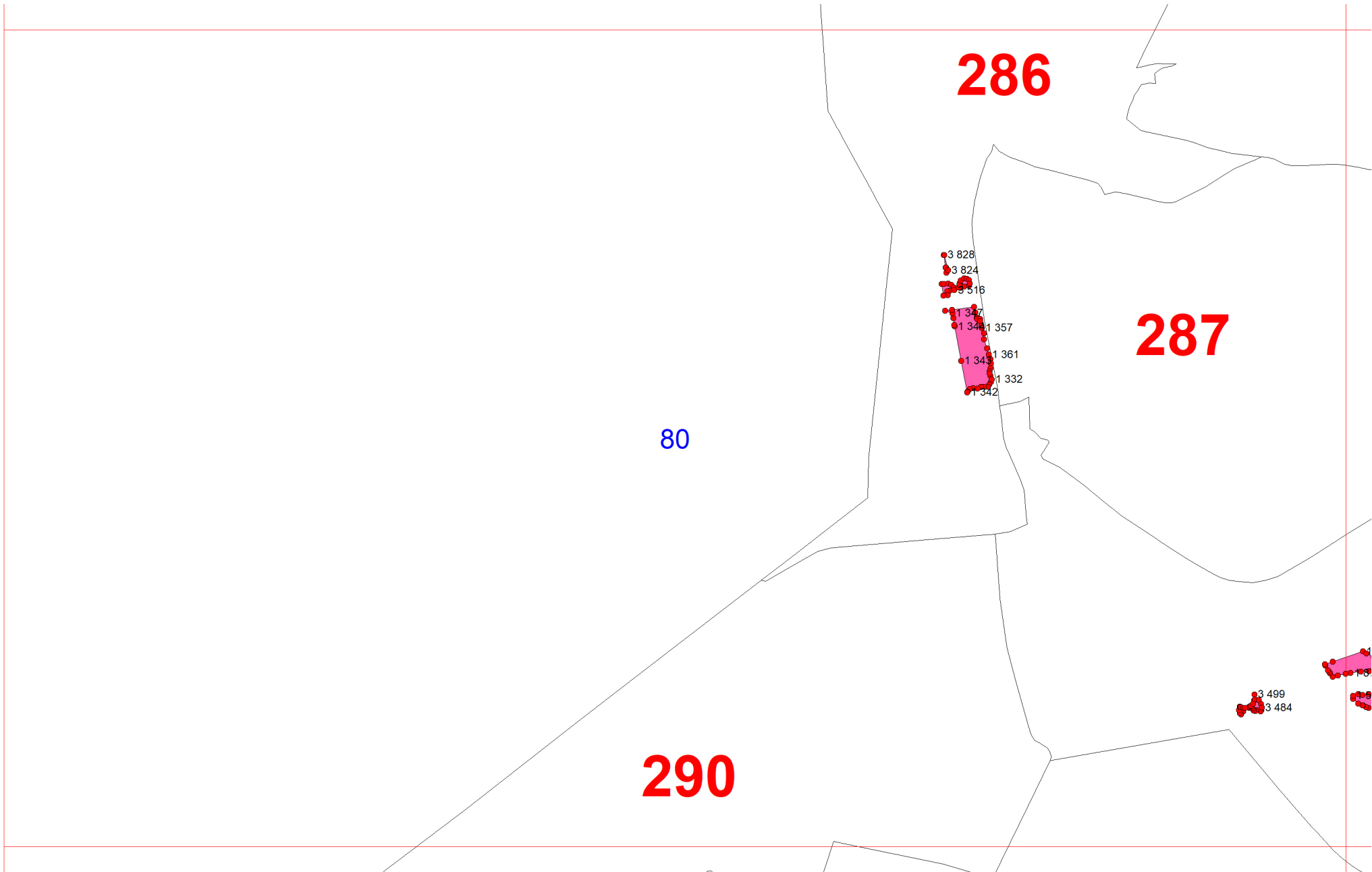












285

303

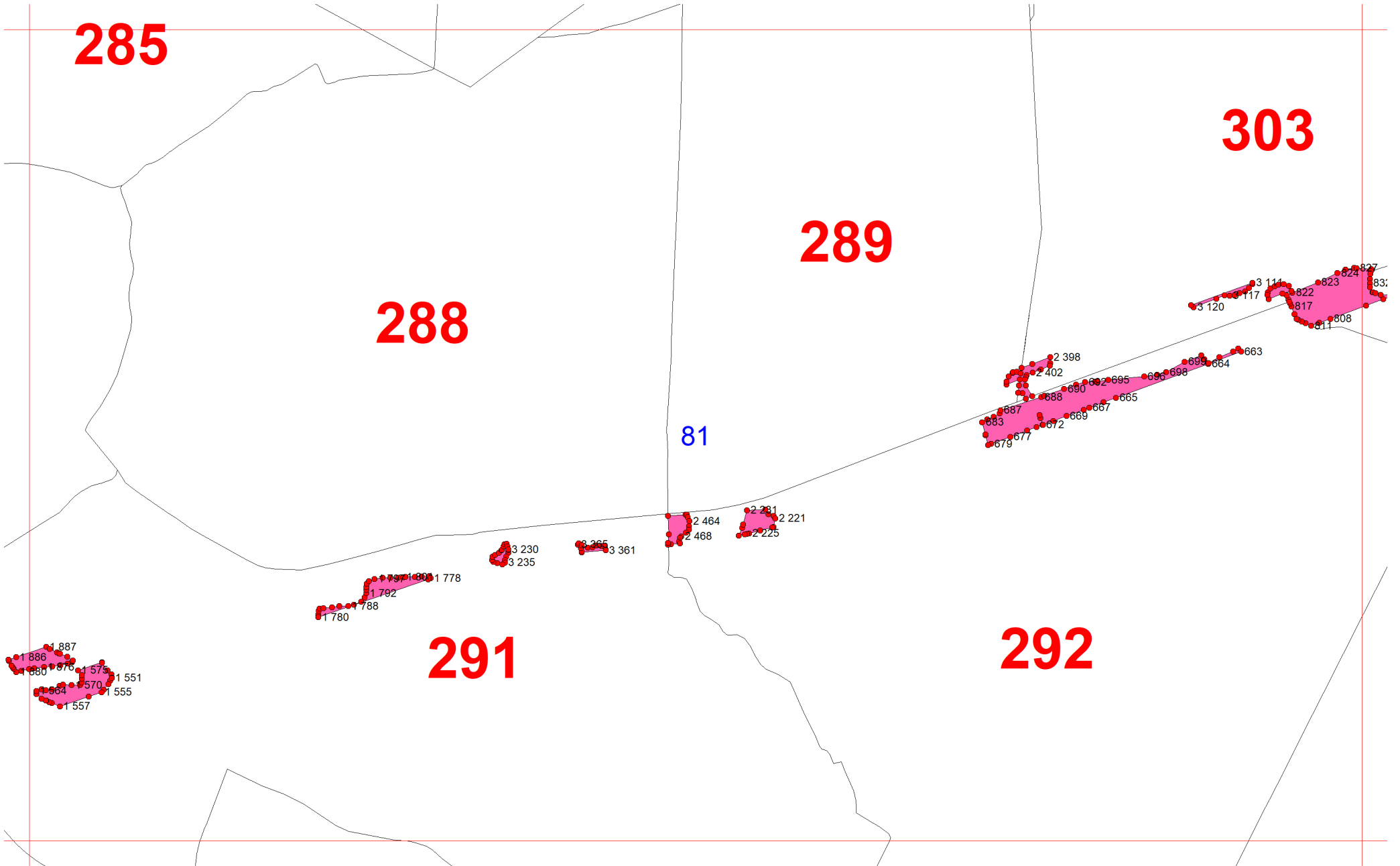
289

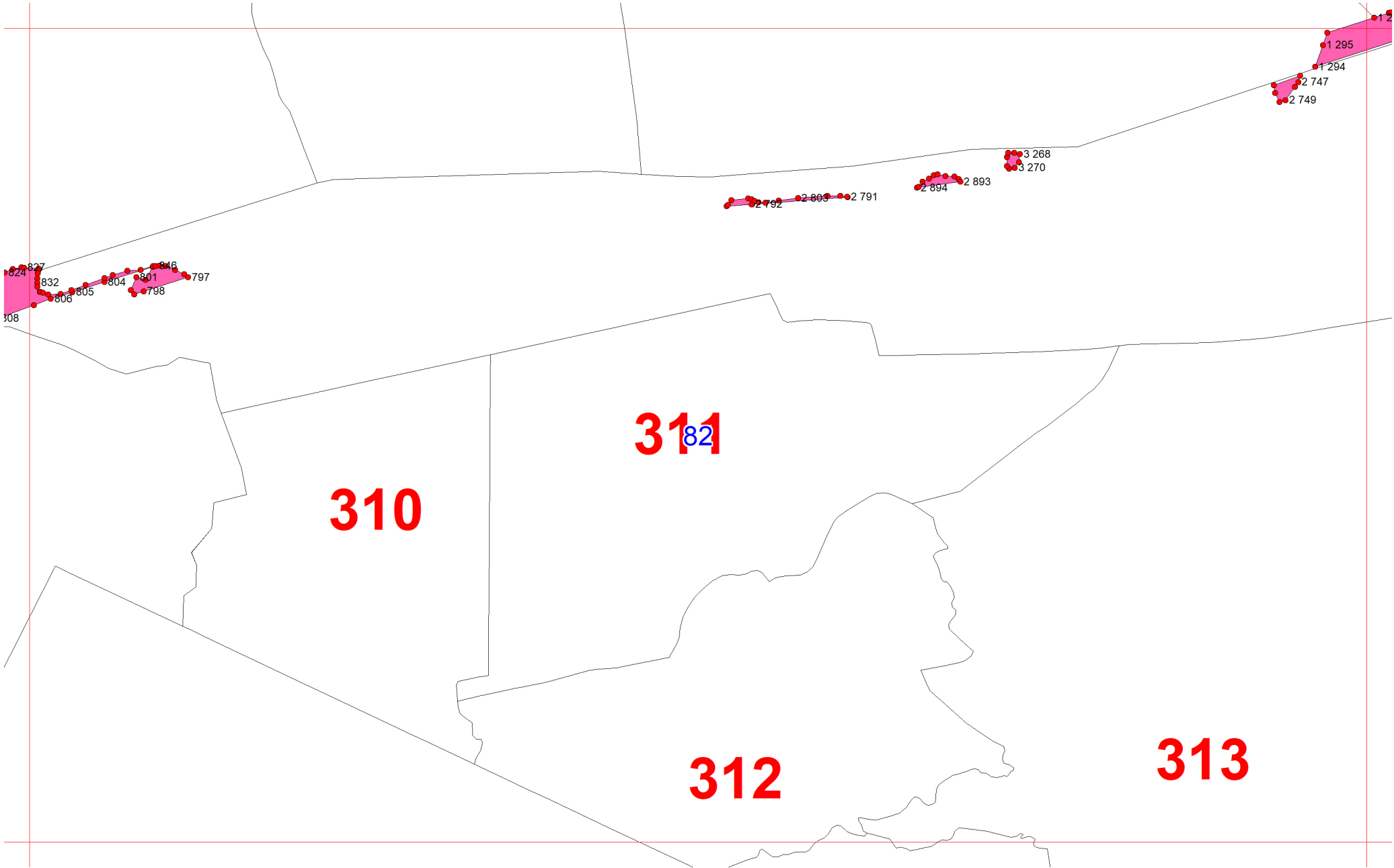
288

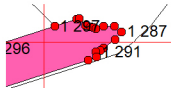
81

292

291

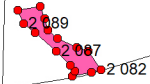
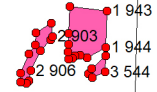






309

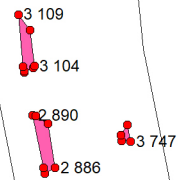
3758



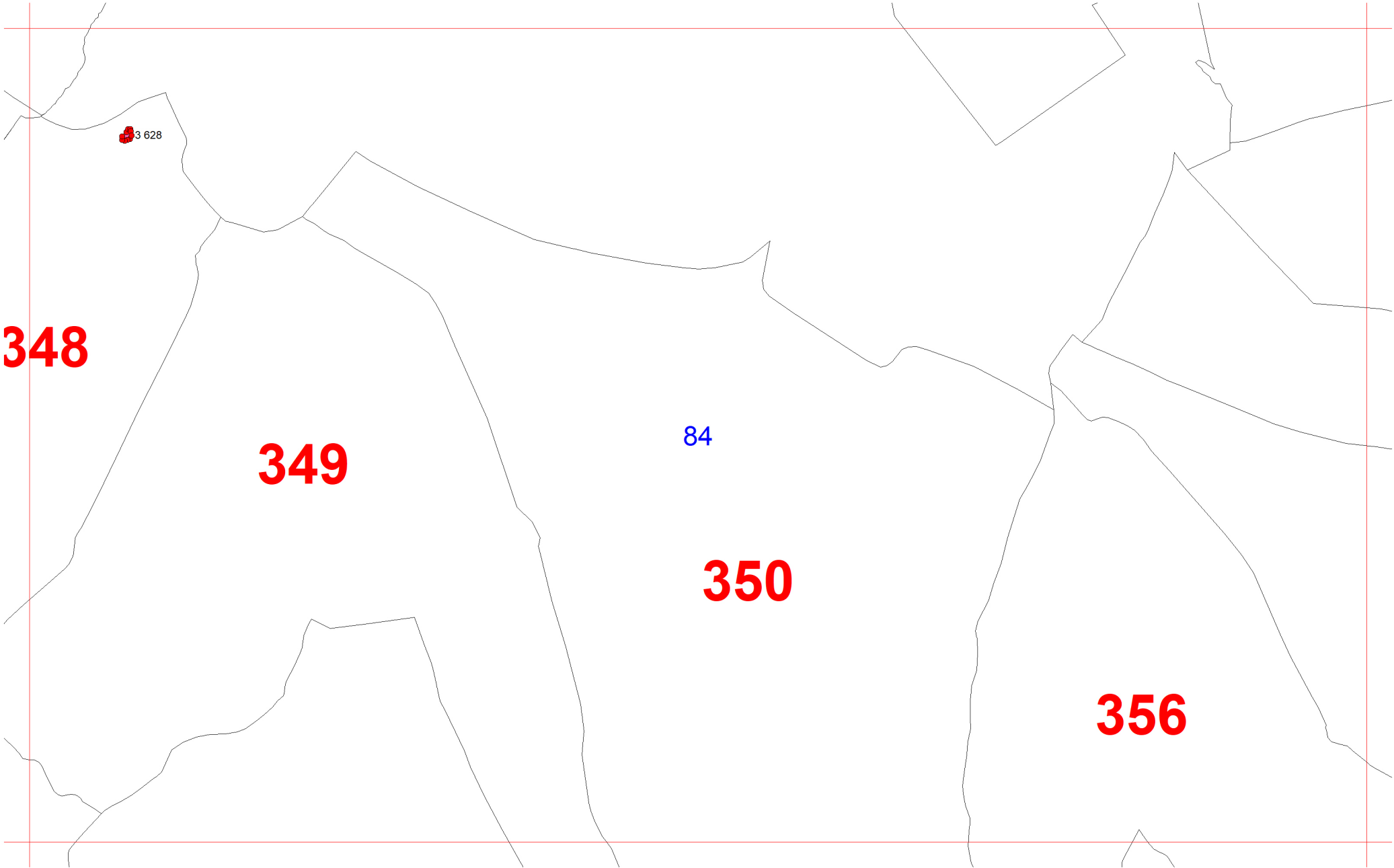
83

34

314



315



3628

348

349

84

350

356

