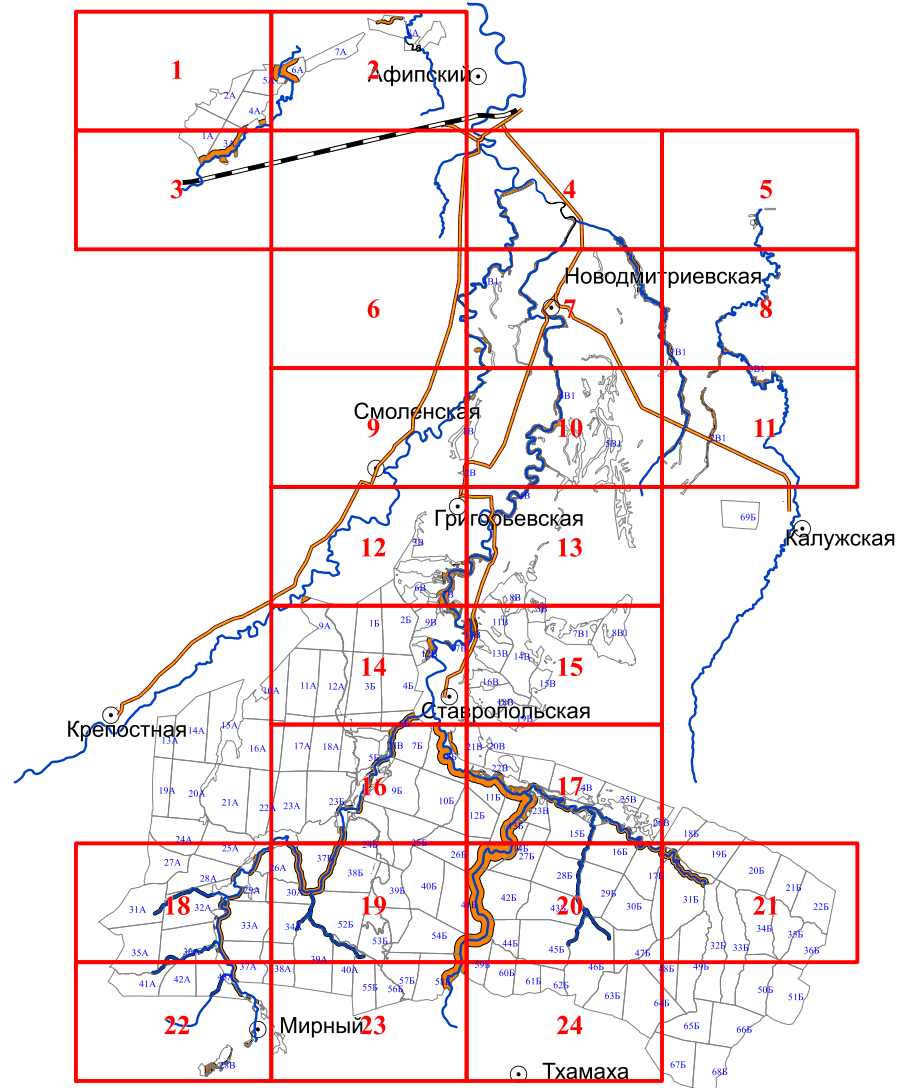








Графическое описание местоположения границ земель,
на которых располагаются леса, расположенные в
водоохранных зонах,
на территории
Смоленского участкового лесничества
Афипского лесничества
Краснодарского края

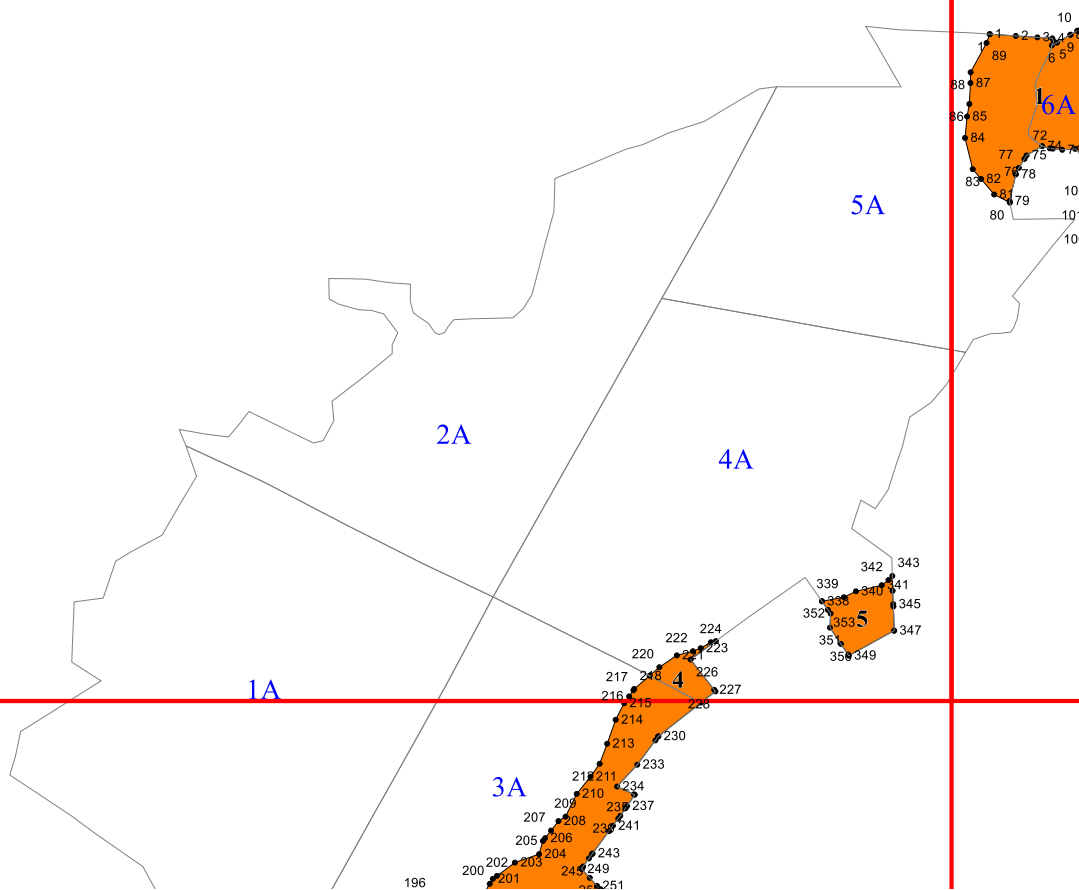
Приложение № 28 к приказу Рослесхоза
от 27.02.2023 № 207

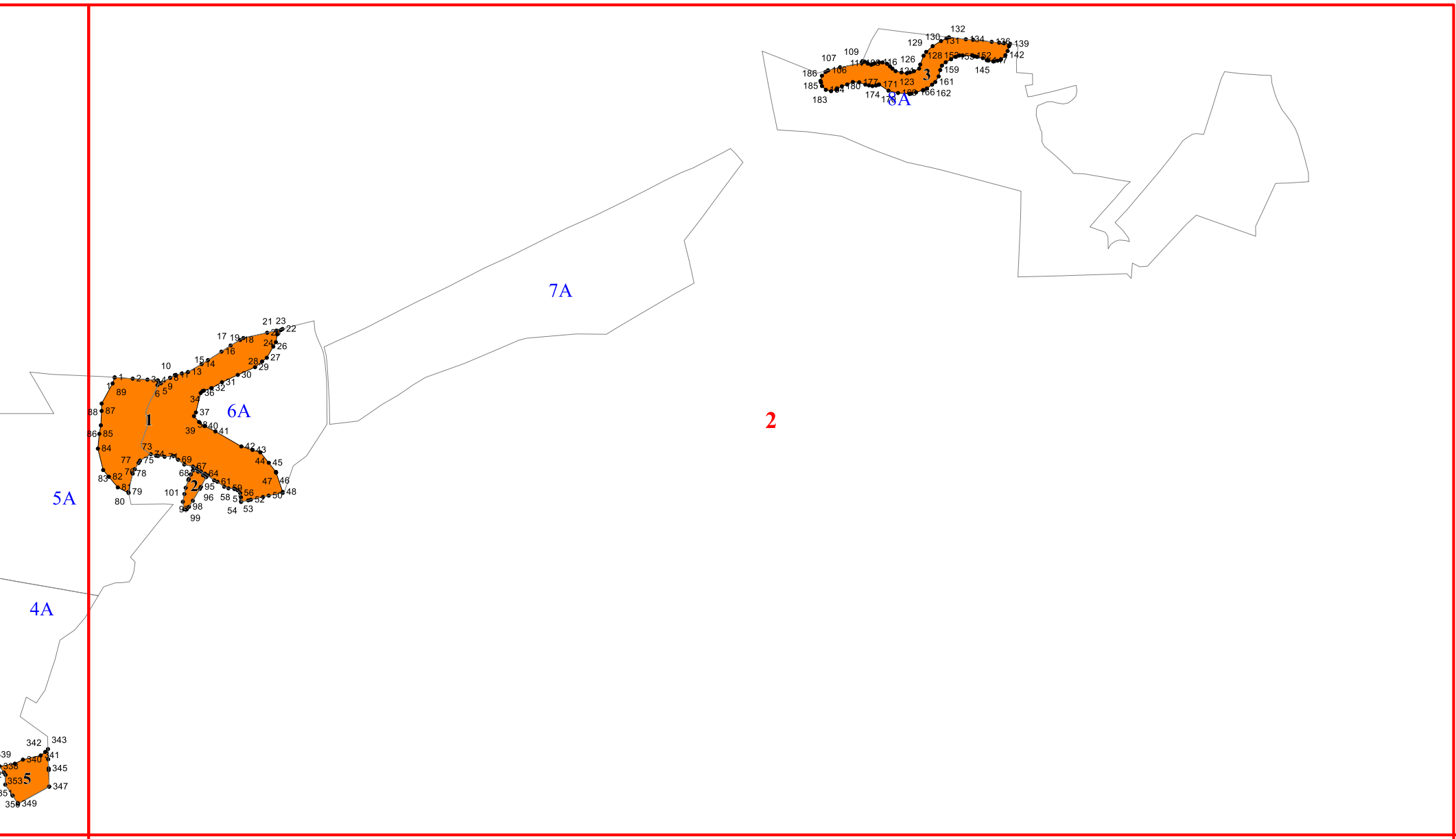


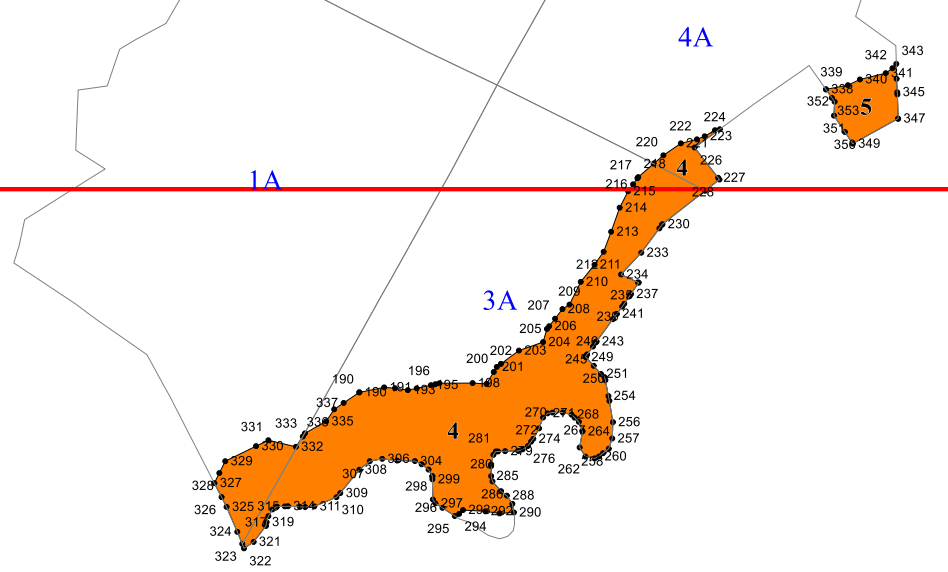
Условные обозначения:

-  - лесной квартал
-  - лист формата
-  - населенные пункты
-  - реки
-  - дороги
-  - леса, расположенные в водоохранных зонах

1

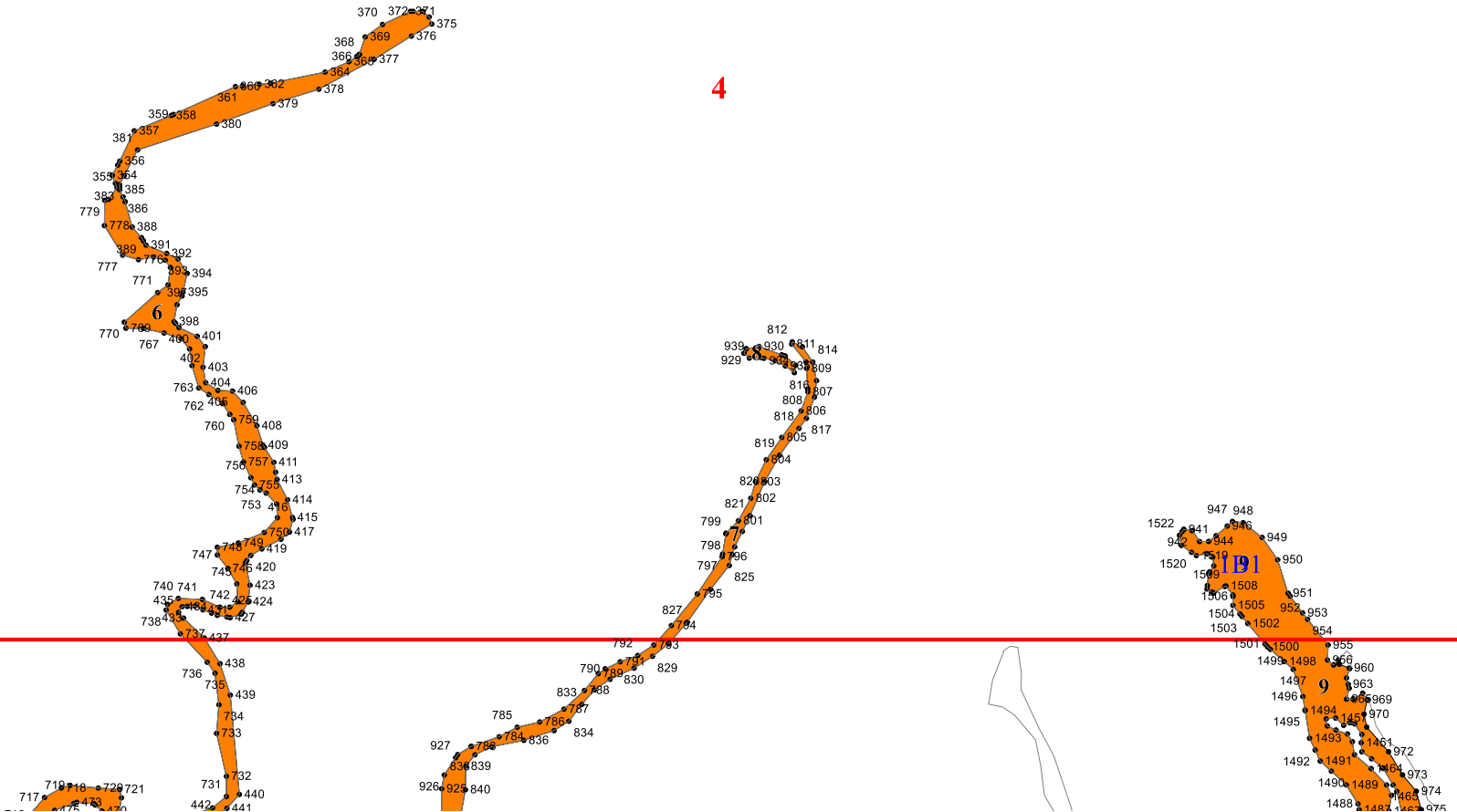




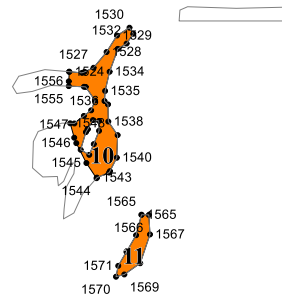


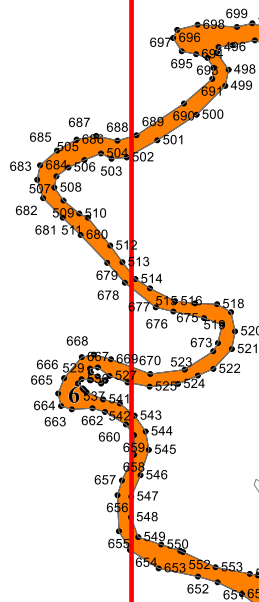
3

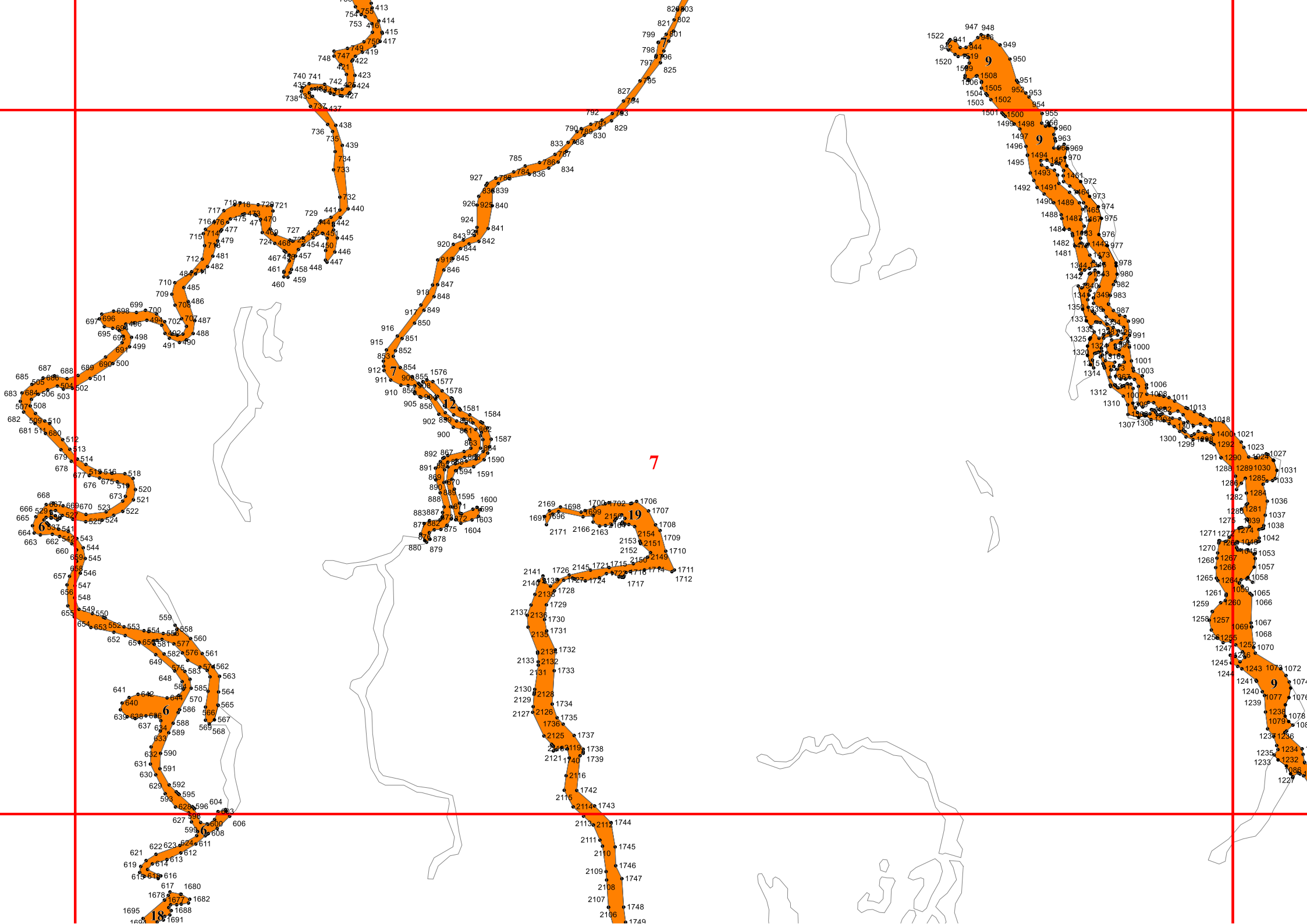
4



5







7

19

9

9

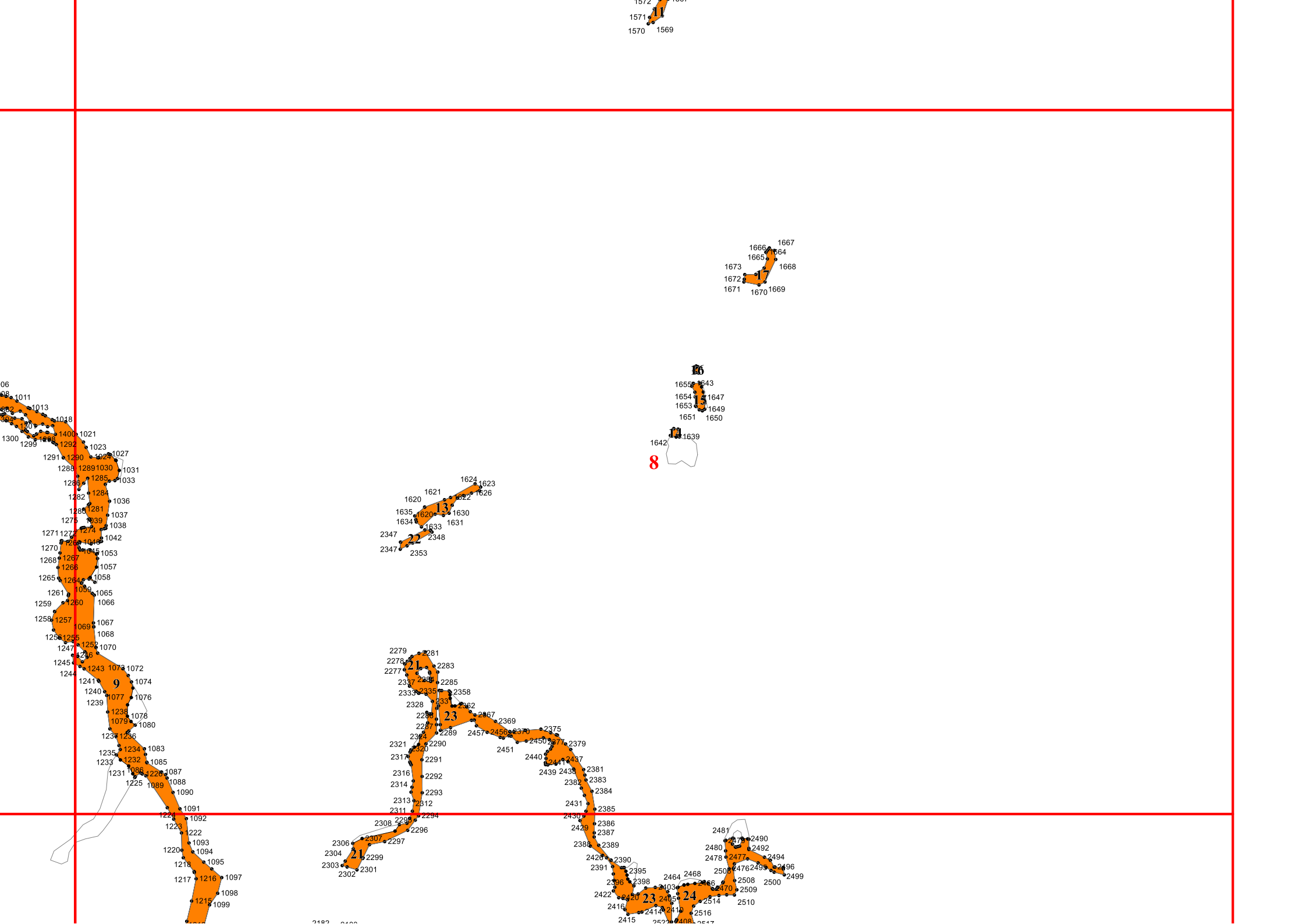
9

6

6

6

18



1572 1569
1571 1569

1666 1667
1665 1664
1673 1668
1672 1671
1670 1669

16
1655 1643
1654 1647
1653 1649
1651 1650
1642 1639
8

1624 1623
1622 1626
1621 1620
1635 1630
1634 1633
1631
2347 2348
2347 2353

2279 2281
2278 2283
2277 2281
2337 2285
2333 2335 2358
2328 2336
2327 2362
2287 2289 2457 2456 2370 2375
2324 2289 2451 2450 2377 2379
2321 2290 2440 2441 2437 2381
2317 2291 2439 2438 2381
2316 2292 2382 2383
2314 2293 2382 2384
2313 2312 2431 2385
2311 2294 2430 2385
2308 2295 2429 2386
2307 2297 2429 2387
2306 2307 2297 2388 2389
2304 2299 2428 2390
2303 2302 2301 2391 2395
2481 2479 2490
2480 2492
2478 2477 2494
2508 2500
2476 2493 2496
2509 2499
2470 2510
2416 2415 2514 2516
2414 2410 2516
2415 2514 2516
2414 2410 2516

1008 1011
1002 1013
1003 1010
1300 1299
1400 1021
1292 1023
1291 1290 1022 1027
1288 1289 1030 1031
1286 1285 1033
1282 1284 1036
1280 1281 1037
1275 1039 1038
1271 1272 1274 1042
1270 1266 1046 1042
1268 1267 1057
1265 1266 1058
1261 1059 1065
1259 1260 1066
1258 1257 1067
1256 1255 1068
1247 1252 1070
1245 1246 1074
1244 1243 1074 1072
1241 1074 1074
1240 1076
1239 1077 1076
1238 1078 1080
1237 1079 1080
1234 1236
1235 1234 1083
1233 1232 1085
1231 1085 1228 1087
1225 1089 1088
1091 1091
1224 1092
1223 1222
1220 1093
1218 1094
1217 1216 1095
1215 1097
1098 1098
1099 1099

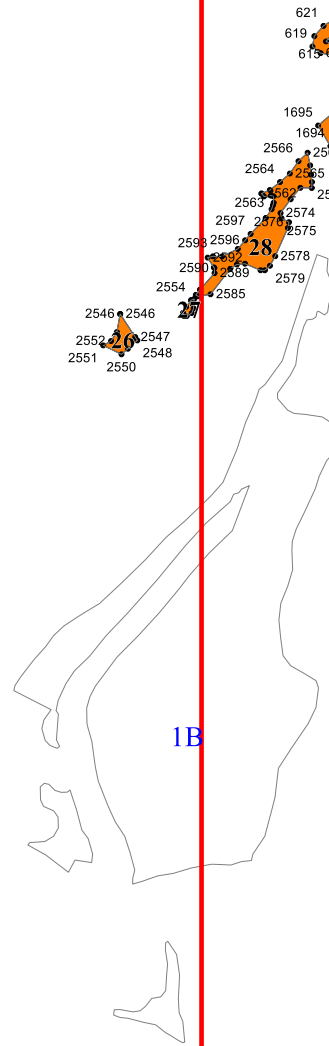
2182 2182

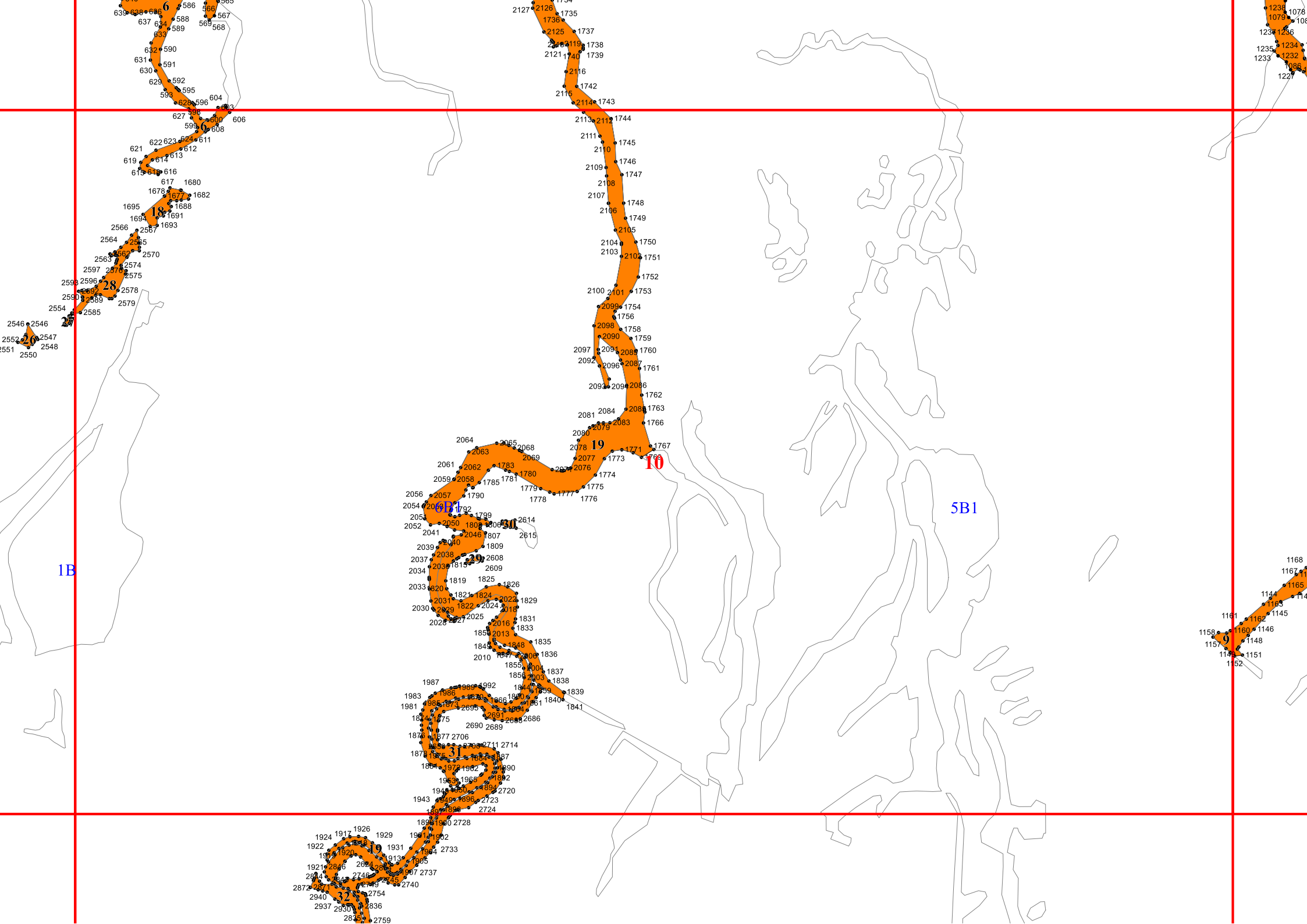
9

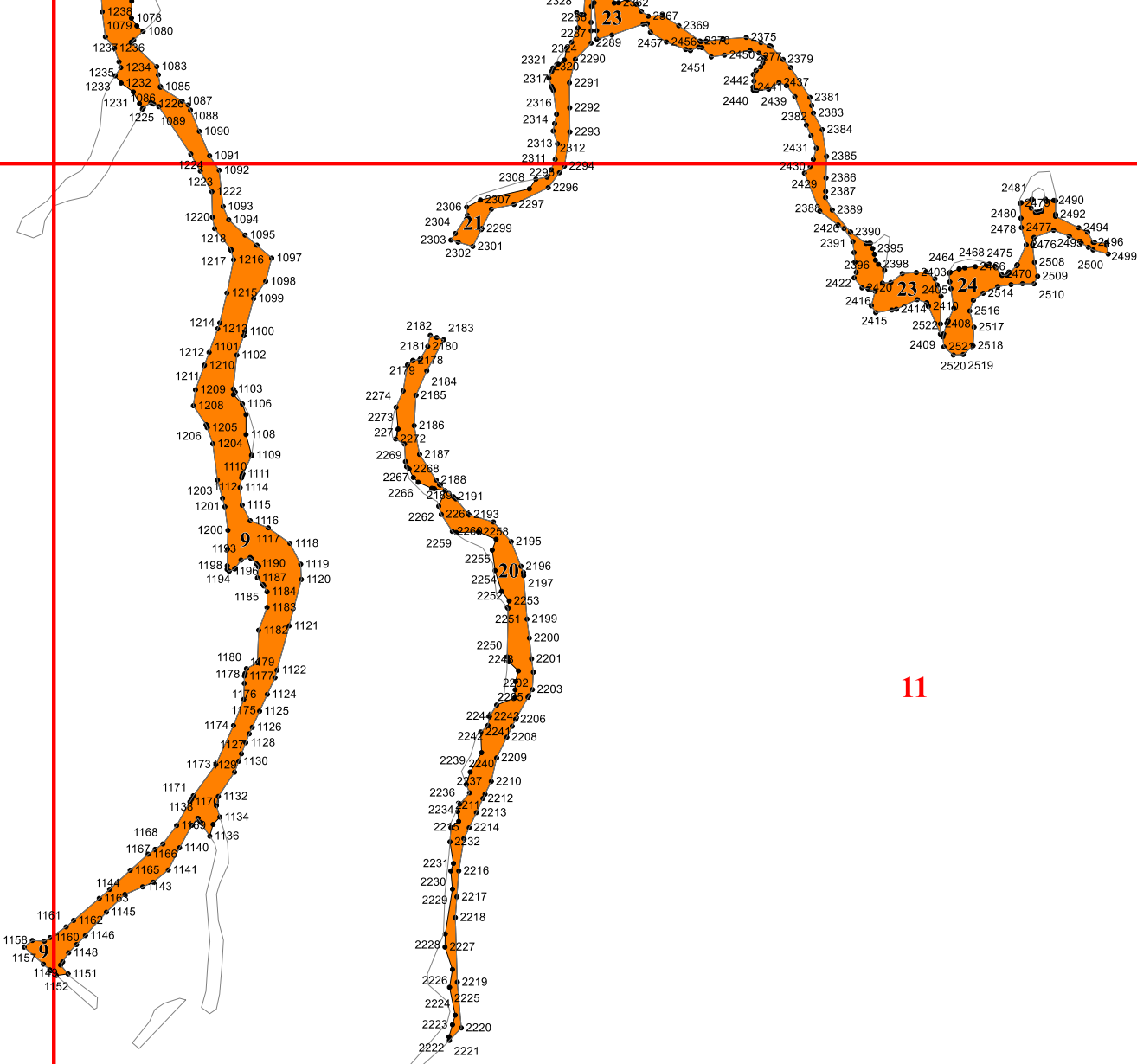
2531
2545 2531
2532 2533
2541 2535
2540 2539
2538

2546 2546
2552 2547
2551 2548
2550

1B







11

69Б

12

3B

6B

2941 2941
2960 2943
2959 2946
2958 2948
2956 2950
2955 2954

33

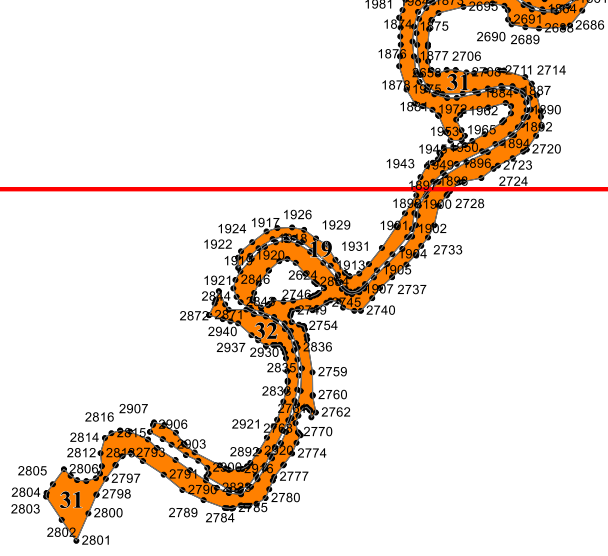
9A

1B

2B

9B

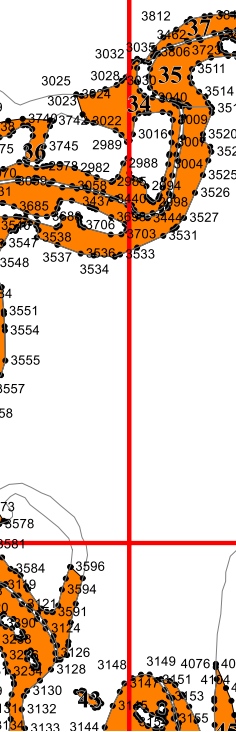
3812 3162 3745
3032 3028 3511
3025 3024 3514 34
3739 3023 3040 3518
3758 3738 3749 3745 3022 3016 3009 3520
2964 2962 2968 3745 2989 3016 3004 3523
2963 2963 2963 3745 2982 2988 3004 3525
3350 3349 3066 3066 3683 3059 3437 3400 3498 3526
3348 3343 3069 3547 3538 3706 3686 344 3527
3325 3323 3072 3547 3537 3703 3531
3542 3542 3081 3548 3537 3534 533
3322 3327 3086 3550
3329 3306 3087 3088 3553
3305 3304 3091 3554
3297 3298 3000 3094 3555
3295 3296 3085 3085 3557
3292 3292 3085 3664 3559
3290 3291 3082 3561
3289 3280 3105 3562
3288 3276 3106 3565
3271 3273 3109 3566
3270 3119 357 373
3268 3269 3088 3112 3570 3578
326 3265 3256 3581
3266 3254 3255 3383 3119 3584 3596
3244 3244 3256 3371 3121 3594
3247 3245 3242 3122 3591
3246 3246 3122 3124
3239 3239 3126 3148
3229 3234 3128 3148
3130 3130 314 3151 414 407
3131 3132 313 3153 40
3134 3133 3144 3155 440



13



8B



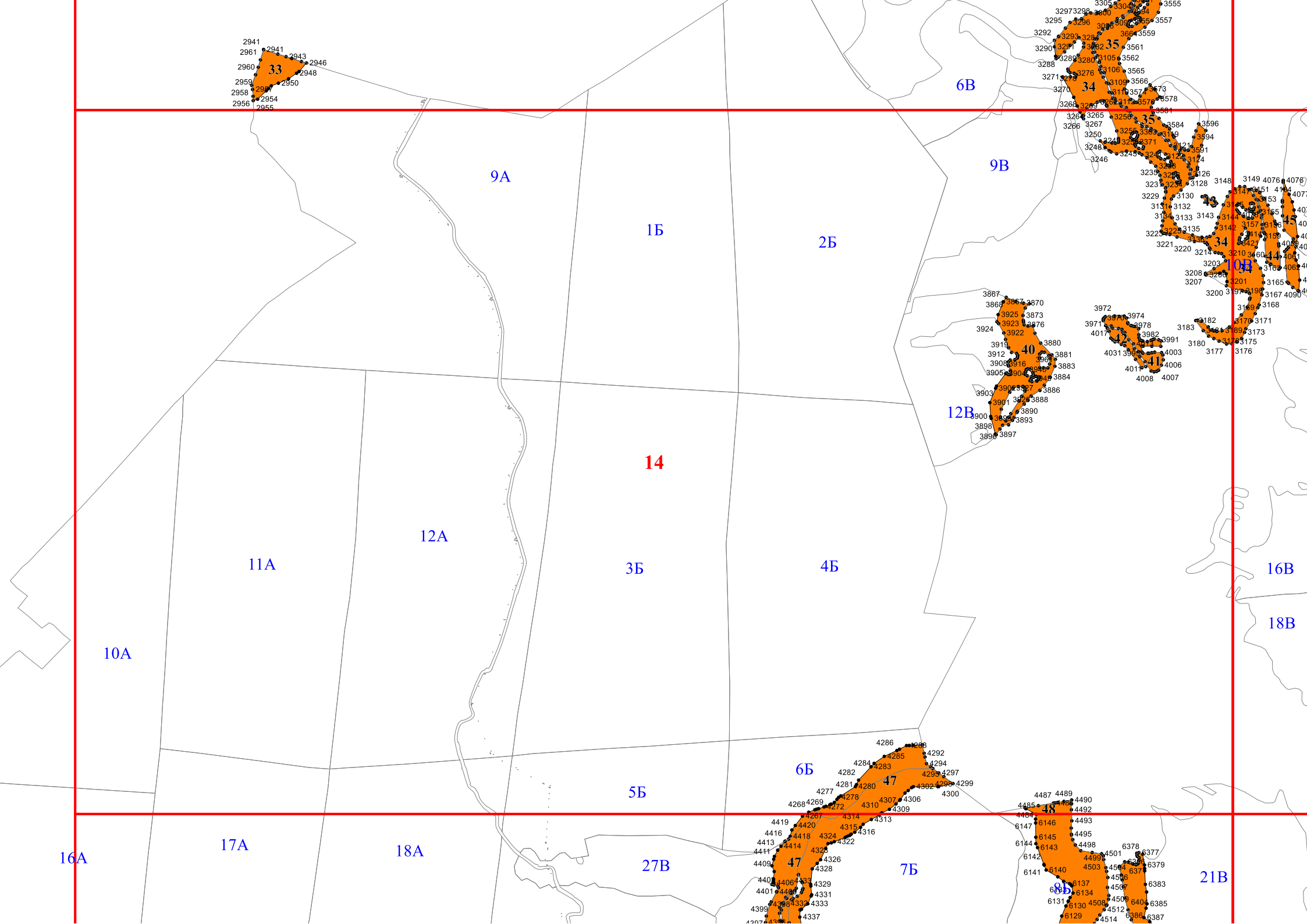
11B

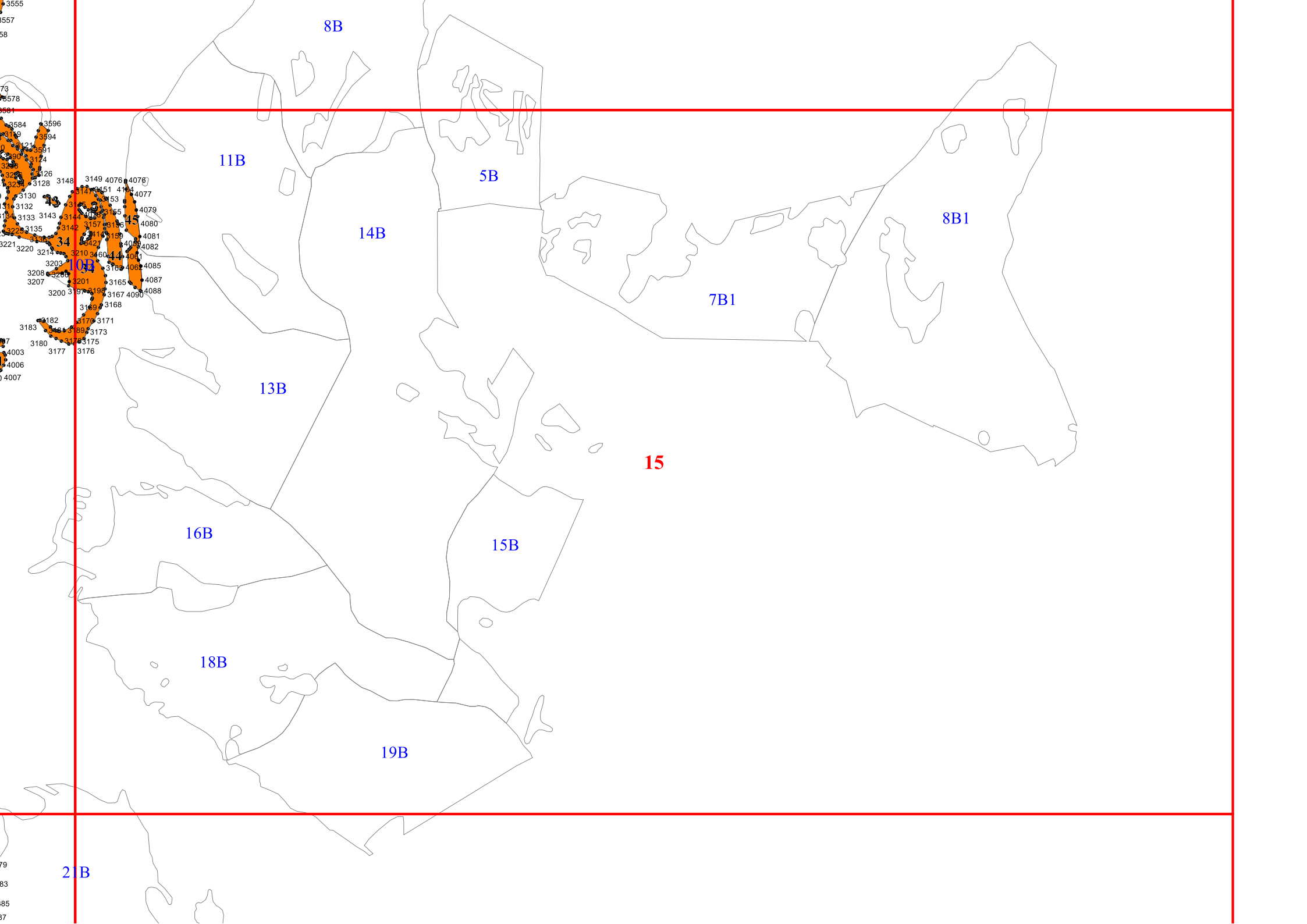
14B

5B

7B1

8B1





557
58

73
5578
5561

3584 3596
3119 3594
3121 3591
3120 3124
3126
3225 3126 3148
3130 3149 4076 4078
3132 3151 4104 4077
3133 3143 3153
3135 3142 3157 4079
3223 3138 3114 3159 4080
3221 3220 3214 3210 3160 4082
3203 3169 4085
3208 3206 3201 3165 4087
3207 3200 3197 3198 3167 4090 4088
3169 3168
3182 3179 3171
3183 3181 3189 3173
3187 3180 3177 3176

8B

11B

5B

8B1

14B

7B1

13B

15

16B

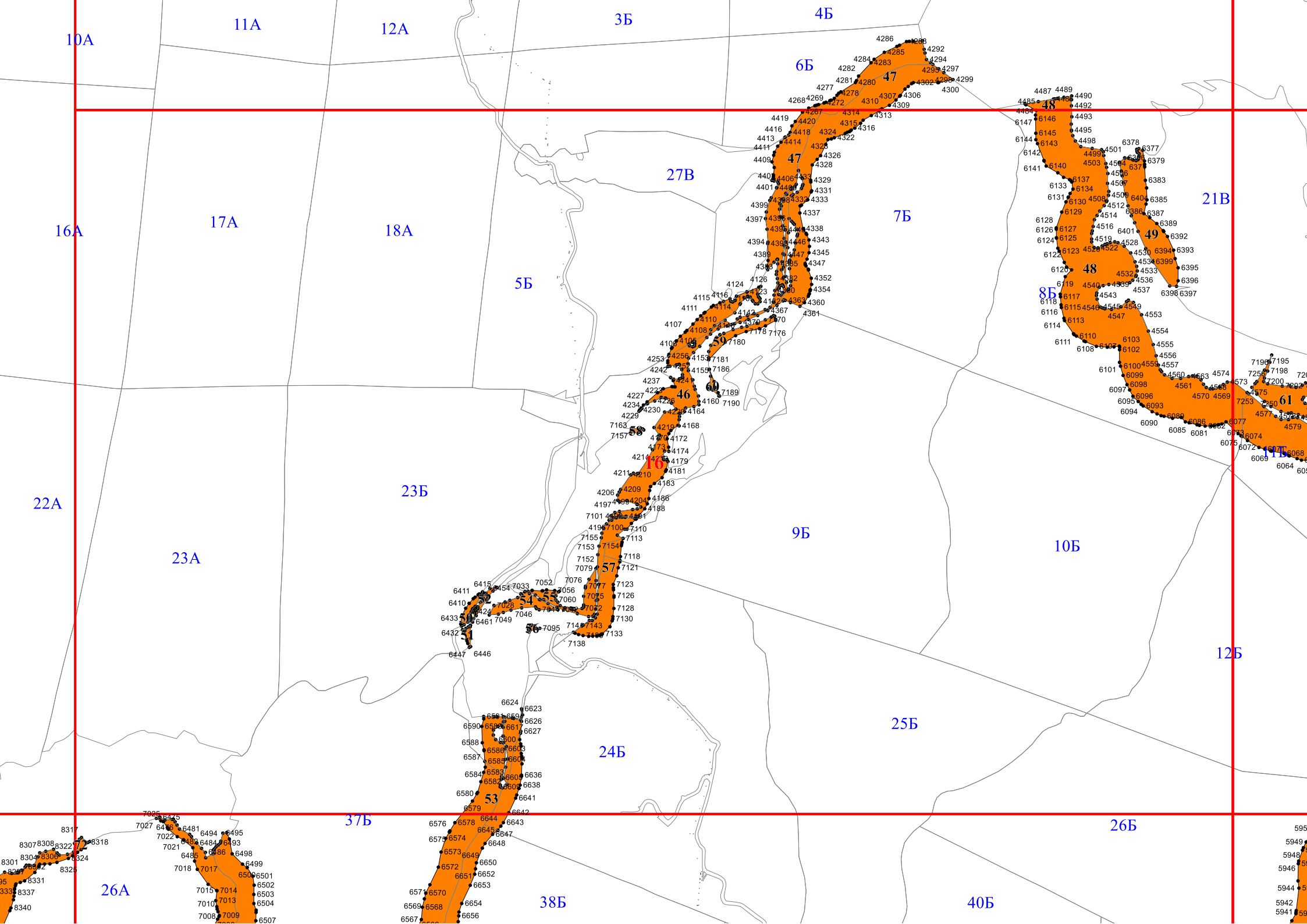
15B

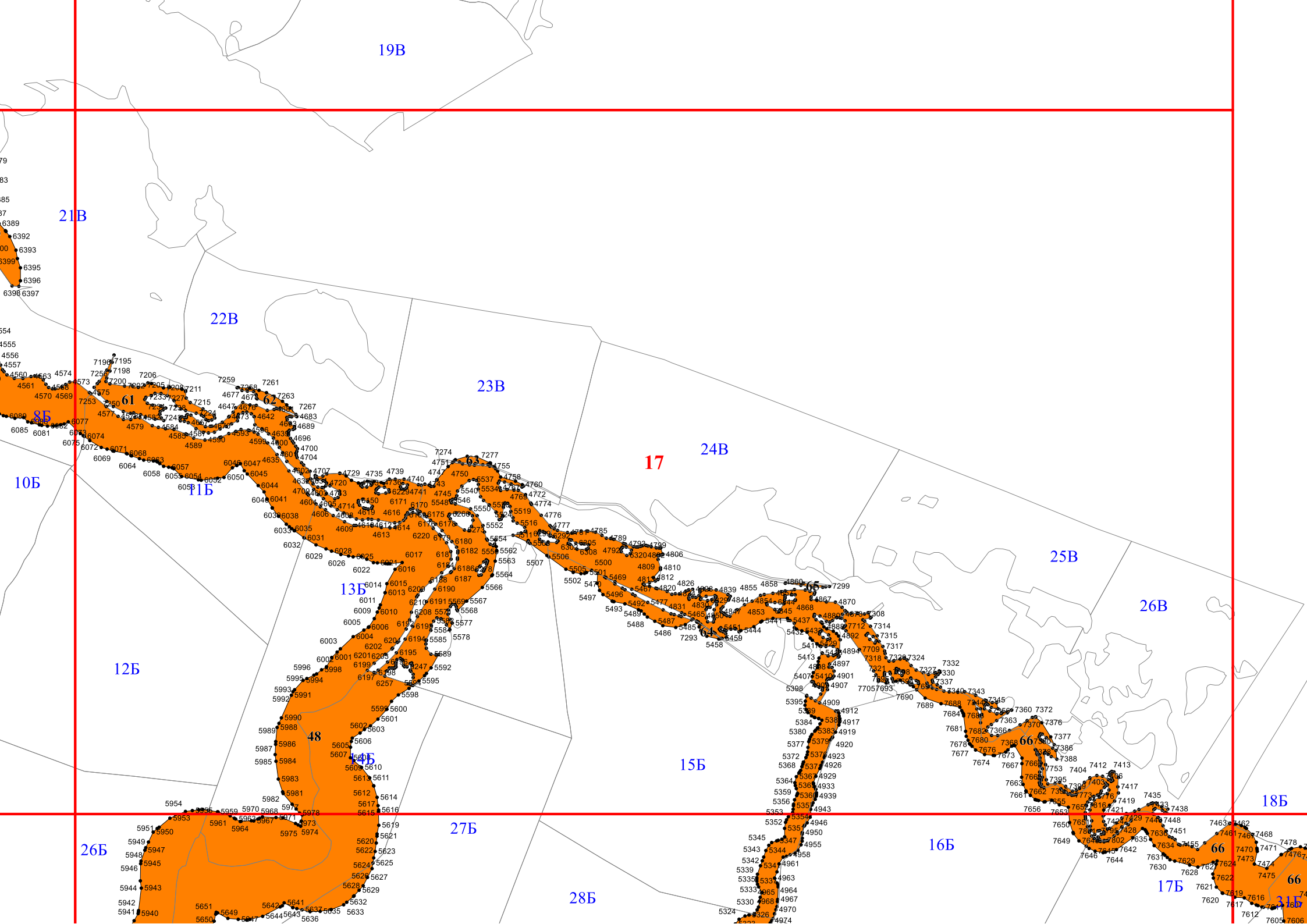
18B

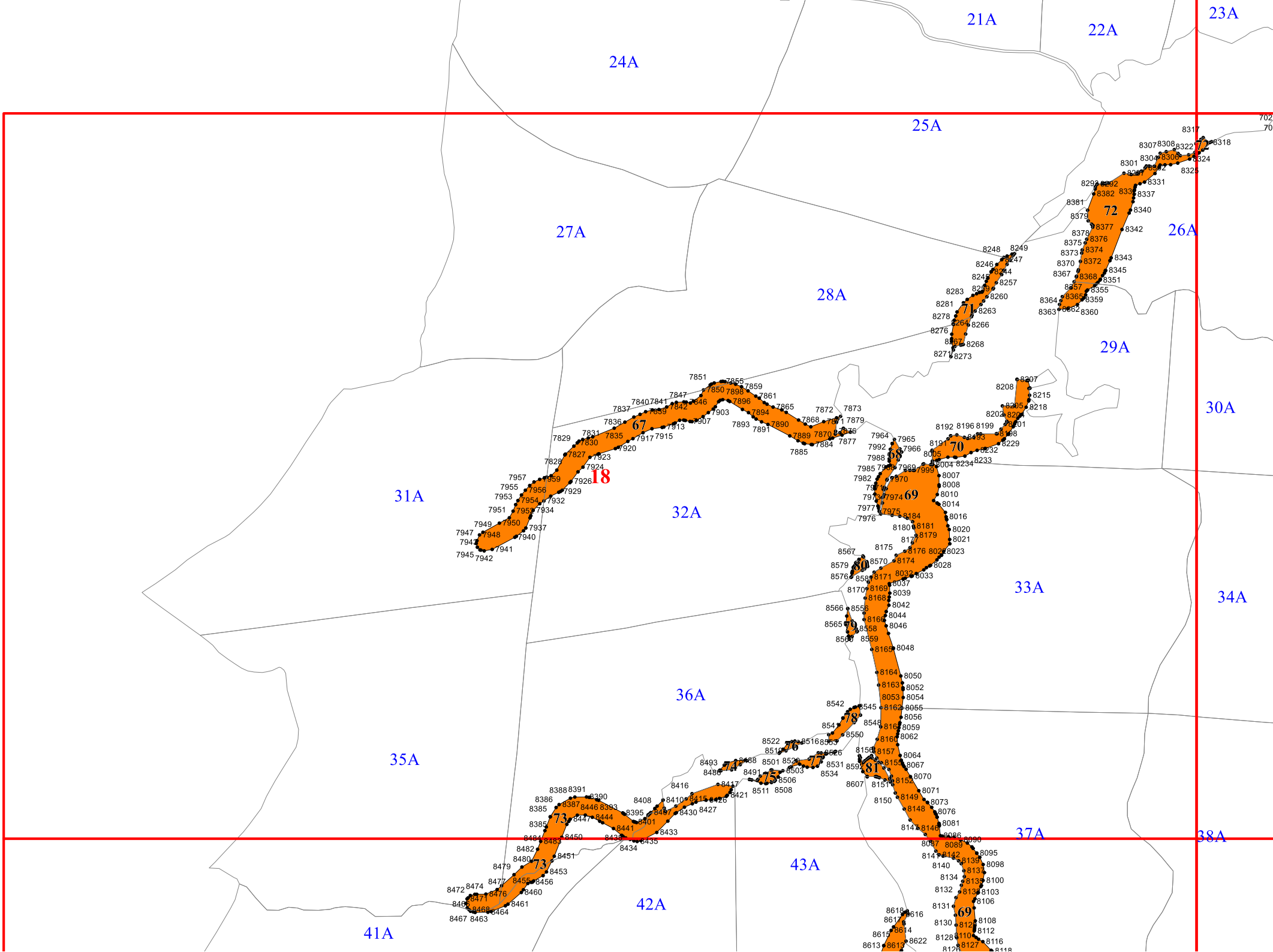
19B

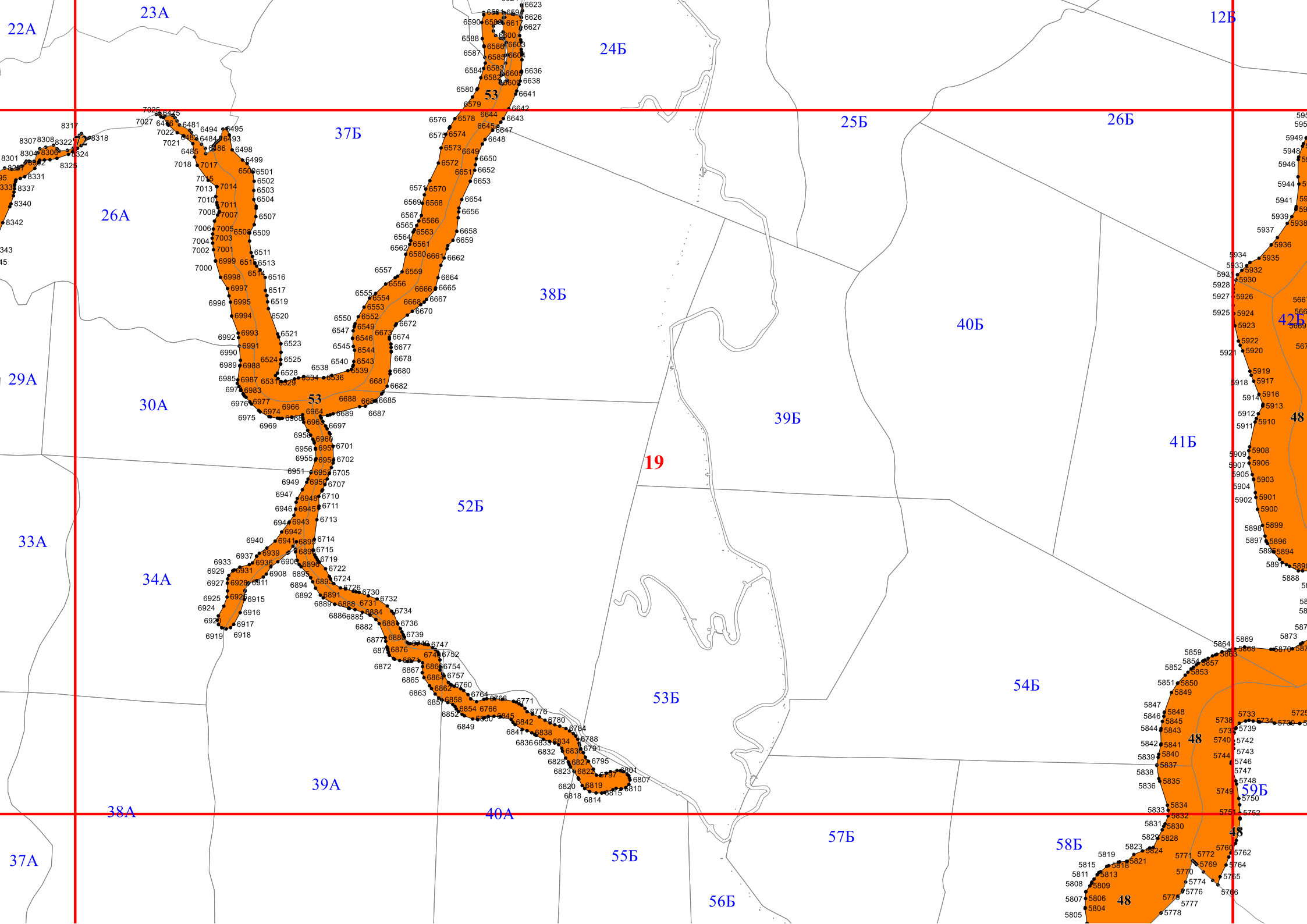
21B

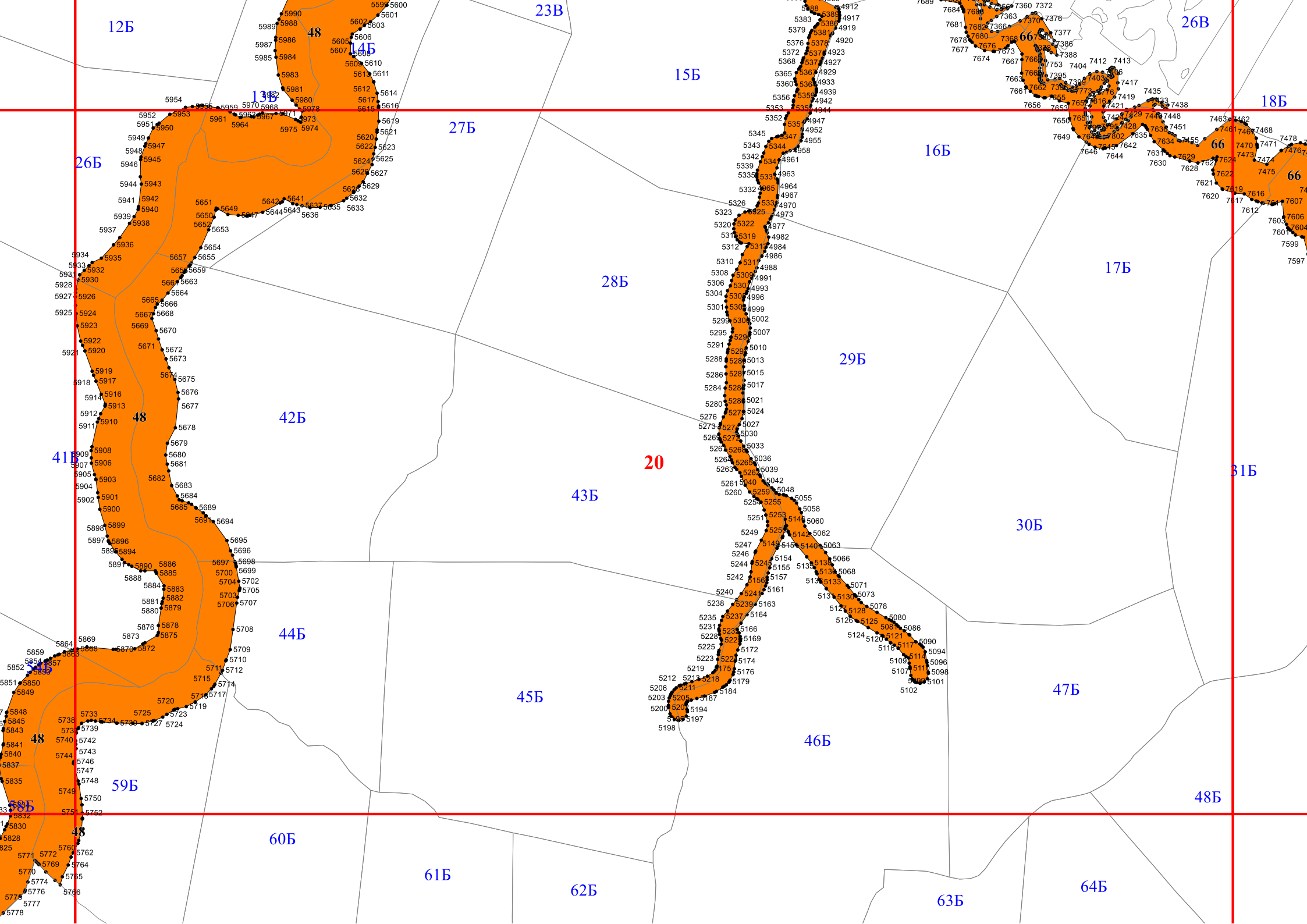
79
83
85
37

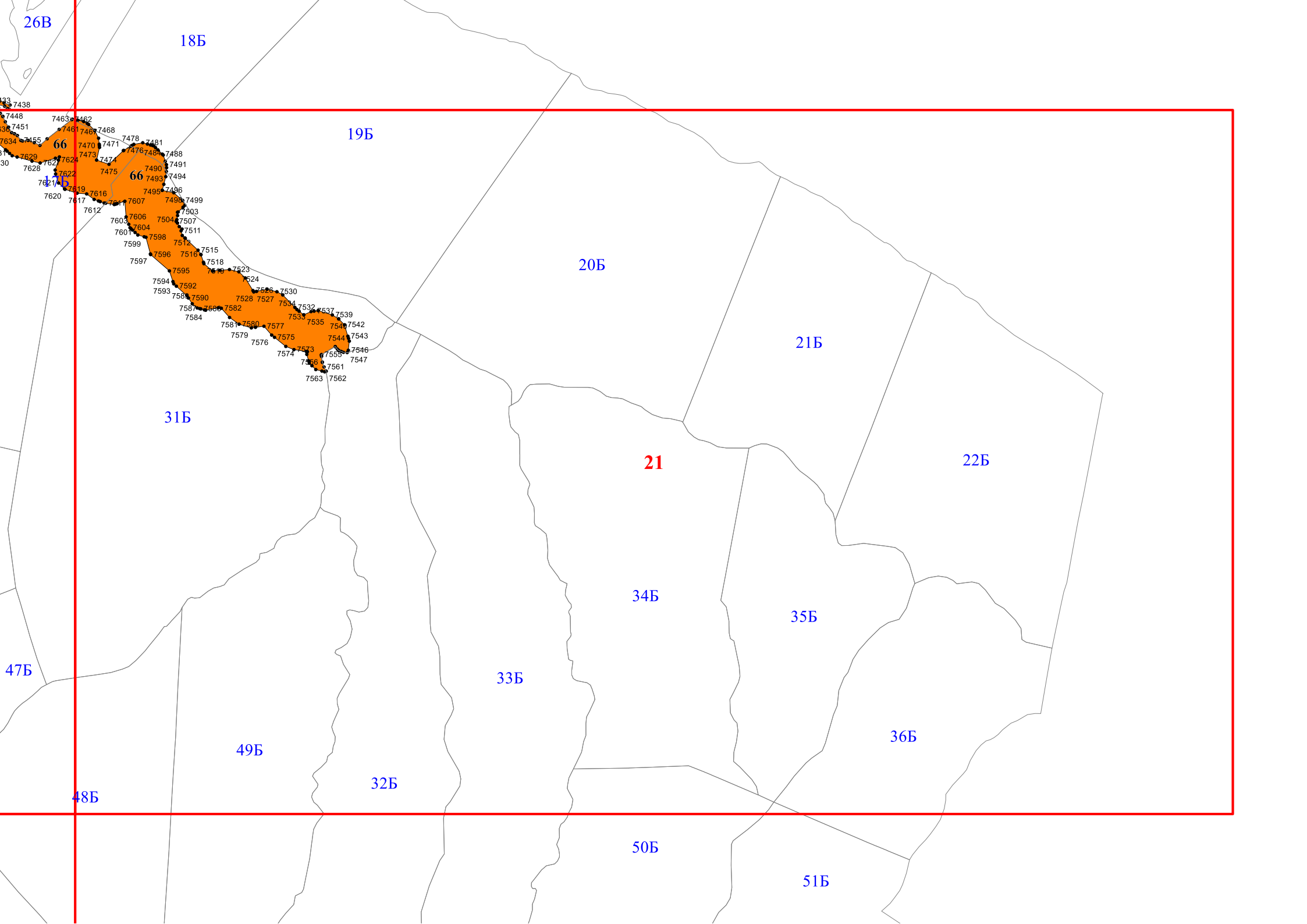












26Б

18Б

19Б

20Б

21Б

22Б

21

31Б

34Б

35Б

33Б

36Б

49Б

47Б

48Б

32Б

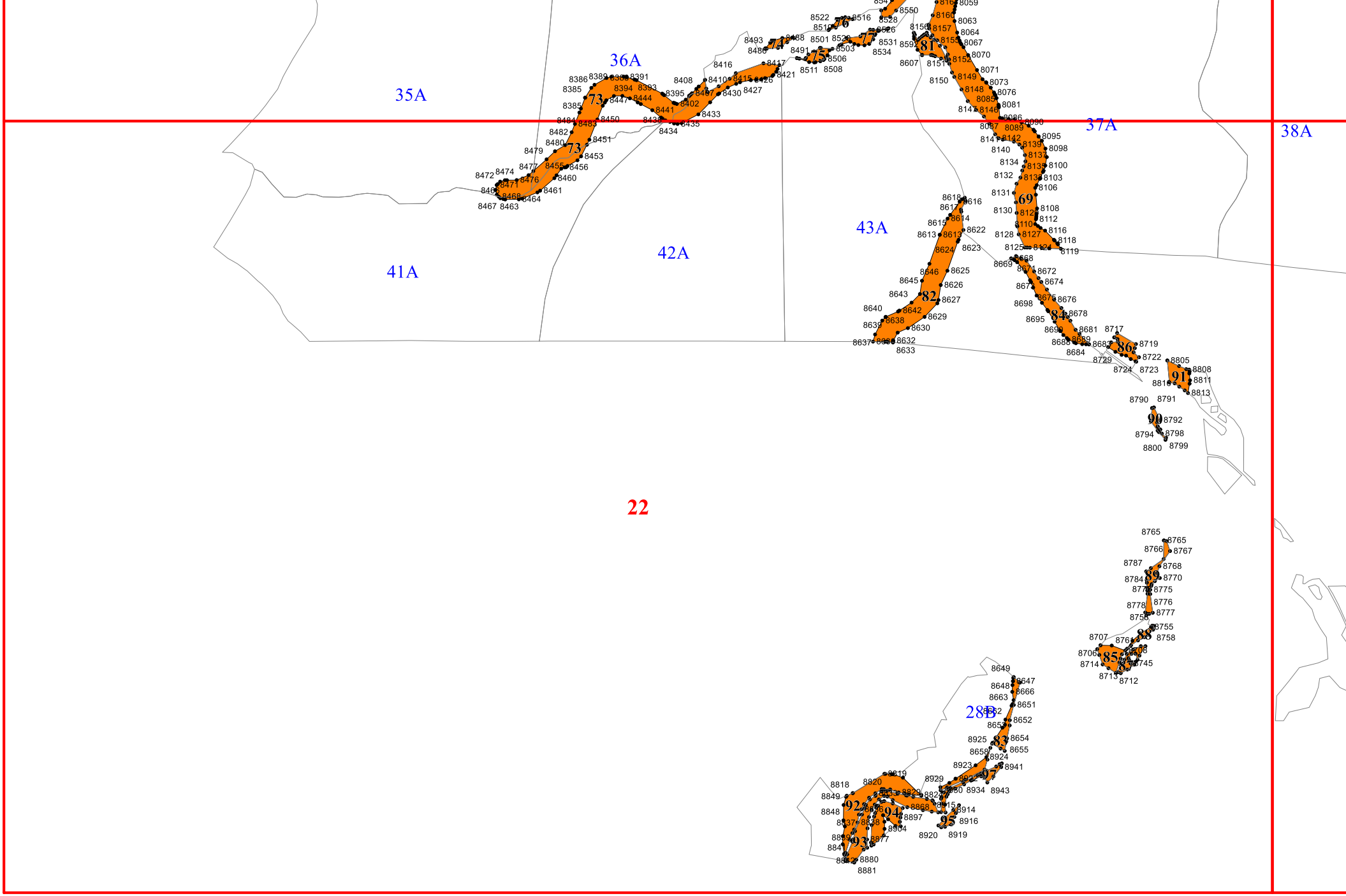
50Б

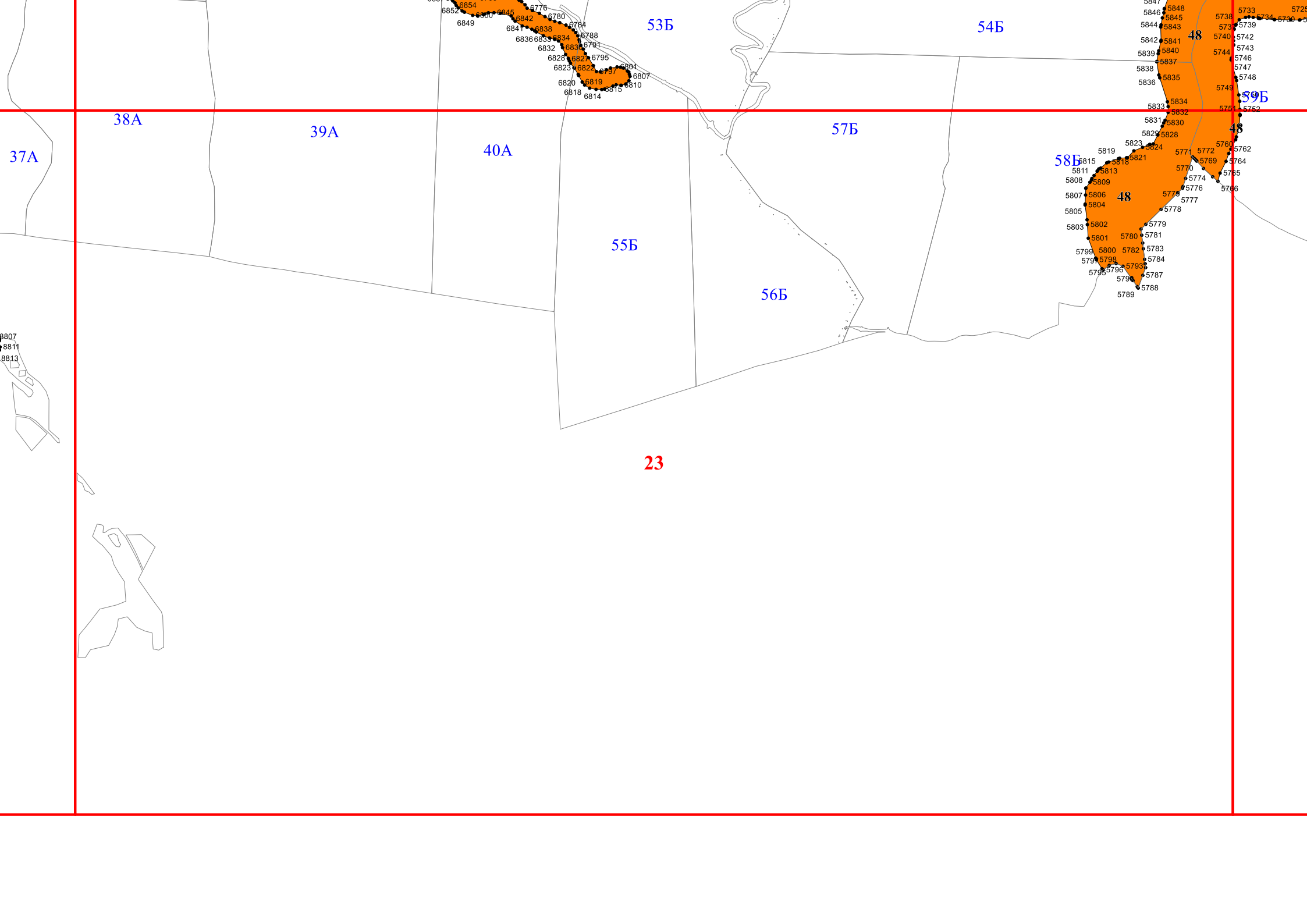
51Б

66

66

7433
7448
7451
7455
7463
7462
7461
7467
7468
7478
7481
7480
7481
7476
7481
7488
7491
7491
7490
7494
7493
7494
7495
7496
7499
7499
7503
7503
7606
7504
7507
7603
7604
7601
7604
7598
7511
7599
7512
7515
7597
7596
7516
7518
7595
7518
7523
7524
7594
7592
7593
7590
7528
7527
7534
7532
7537
7539
7581
7580
7577
7533
7535
7541
7542
7584
7579
7576
7575
7544
7543
7574
7573
7555
7546
7561
7561
7563
7562





37A

38A

39A

40A

53Б

23

54Б

55Б

56Б

48

50Б

50Б

50Б

6807
6811
6813

