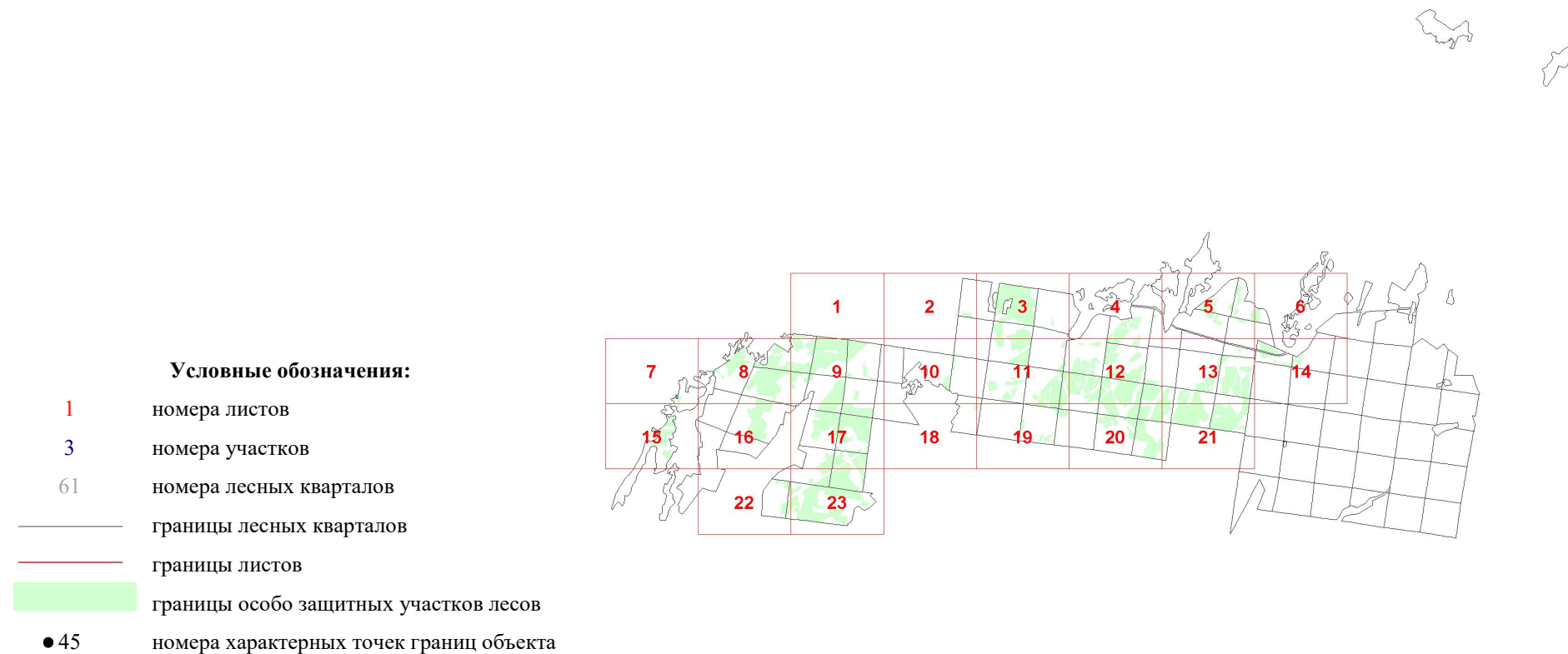
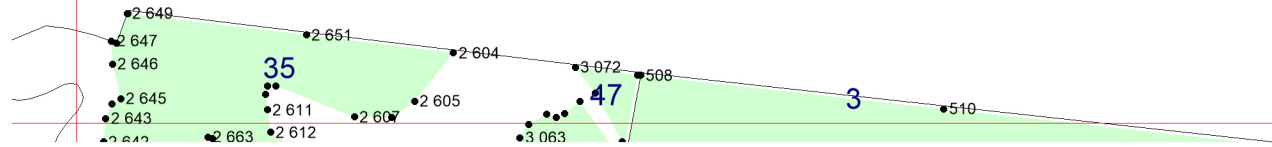


**Графическое описание местоположения границ земель,  
на которых располагаются особо защитные участки  
лесов «медоносные участки лесов»,  
на территории  
Бишиндинского участкового лесничества  
Туймазинского лесничества  
Республики Башкортостан**

Приложение № 227 к приказу Рослесхоза  
от 27.02.2023 № 201



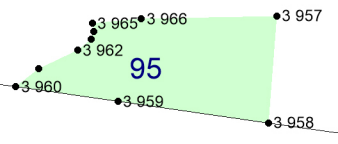
1



2

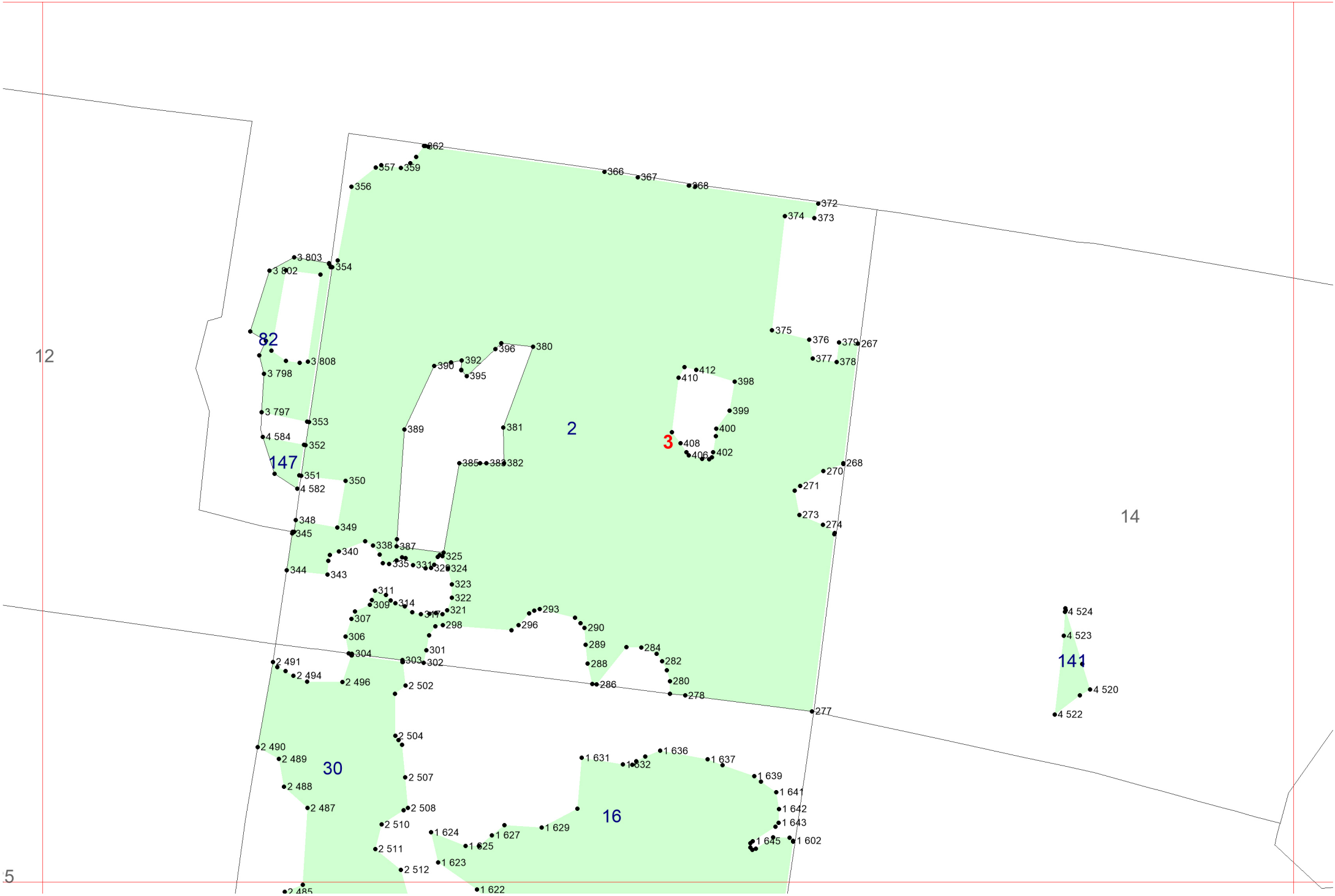
2

12



25

3



12

5

4

82

147

2

3

30

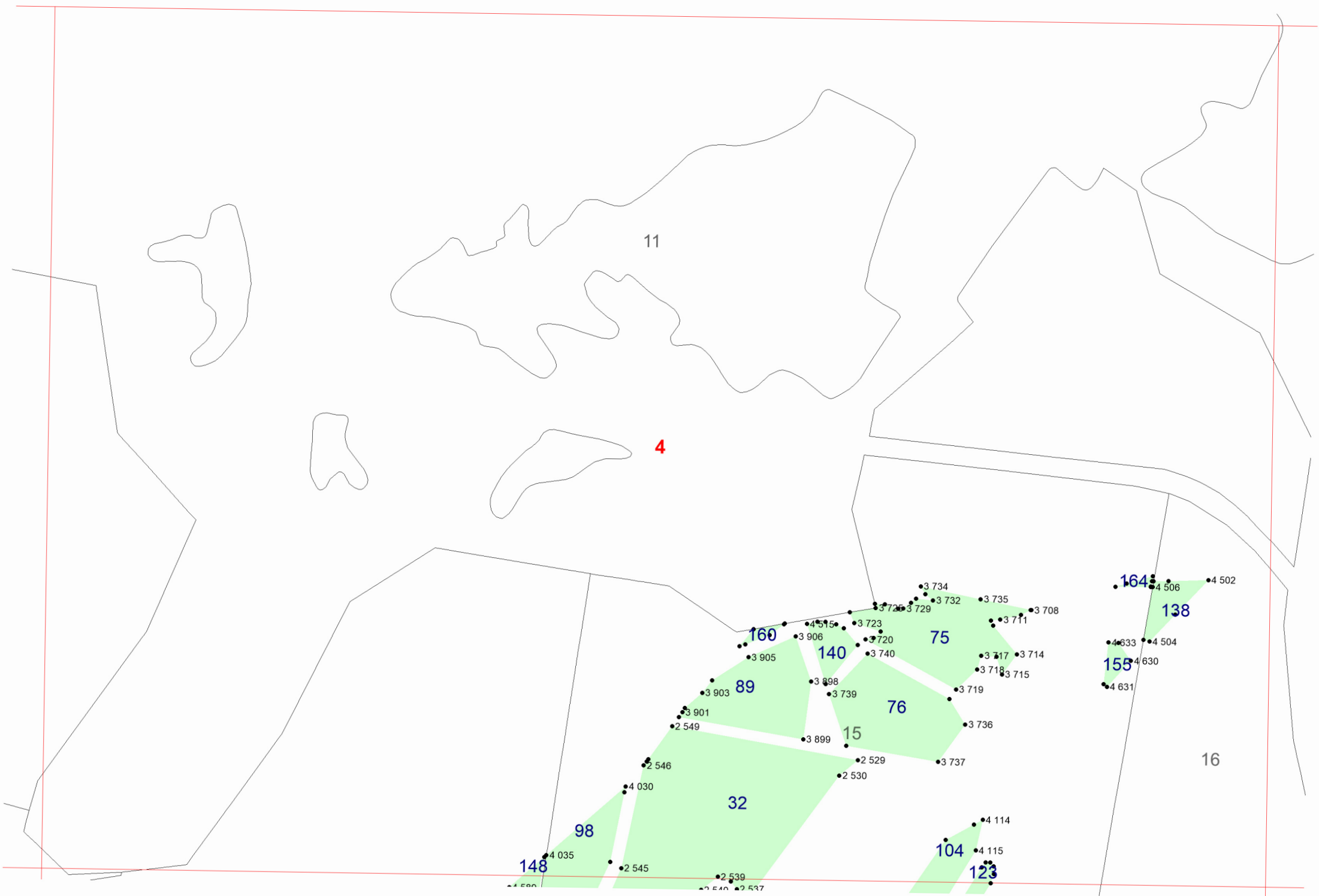
16

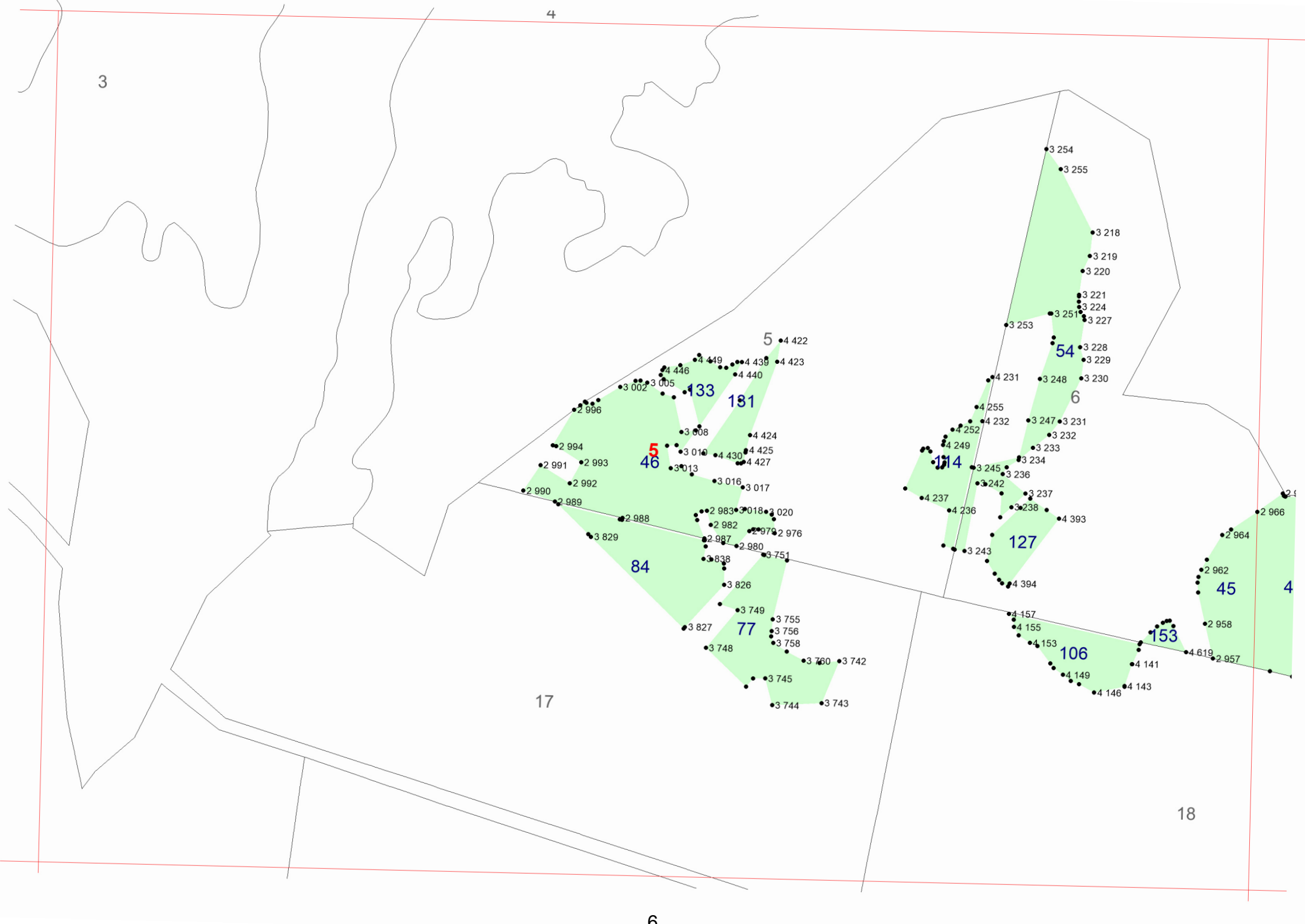
14

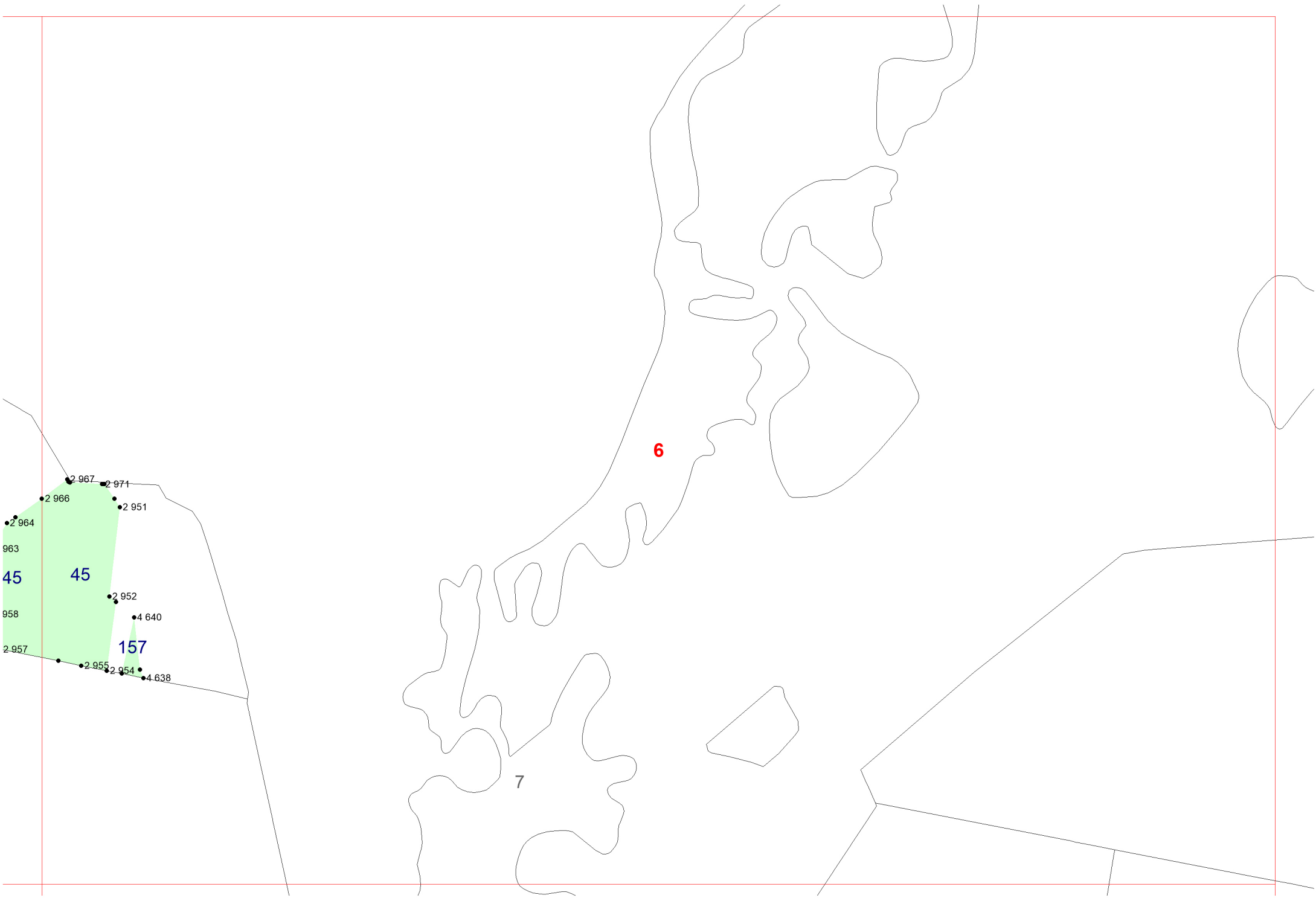
141

- 362
- 357 • 359
- 356
- 366 • 367
- 368
- 372
- 374 • 373
- 3803 • 354
- 3802
- 3798
- 3808
- 3797
- 353
- 4584
- 352
- 351
- 350
- 4582
- 348
- 349
- 345
- 344
- 343
- 338 • 387
- 335 • 334
- 325
- 324
- 344
- 343
- 311
- 309 • 314
- 307
- 306
- 304
- 303
- 301
- 302
- 298
- 296
- 293
- 290
- 289
- 288
- 286
- 284
- 282
- 280
- 278
- 277
- 271
- 270
- 268
- 273
- 274
- 396 • 380
- 390 • 392
- 395
- 385 • 383 • 382
- 412
- 410
- 398
- 399
- 400
- 408
- 406
- 402
- 375
- 376
- 379
- 267
- 377
- 378
- 381
- 389
- 381
- 323
- 322
- 321
- 317
- 316
- 301
- 298
- 296
- 293
- 290
- 289
- 288
- 286
- 284
- 282
- 280
- 278
- 277
- 271
- 270
- 268
- 273
- 274
- 2491
- 2494
- 2496
- 2502
- 2490
- 2489
- 2488
- 2487
- 2504
- 2507
- 2508
- 2510
- 2511
- 2512
- 1624
- 1625
- 1627
- 1629
- 1631
- 1632
- 1636
- 1637
- 1639
- 1641
- 1642
- 1643
- 1645
- 1602
- 4524
- 4523
- 4520
- 4522

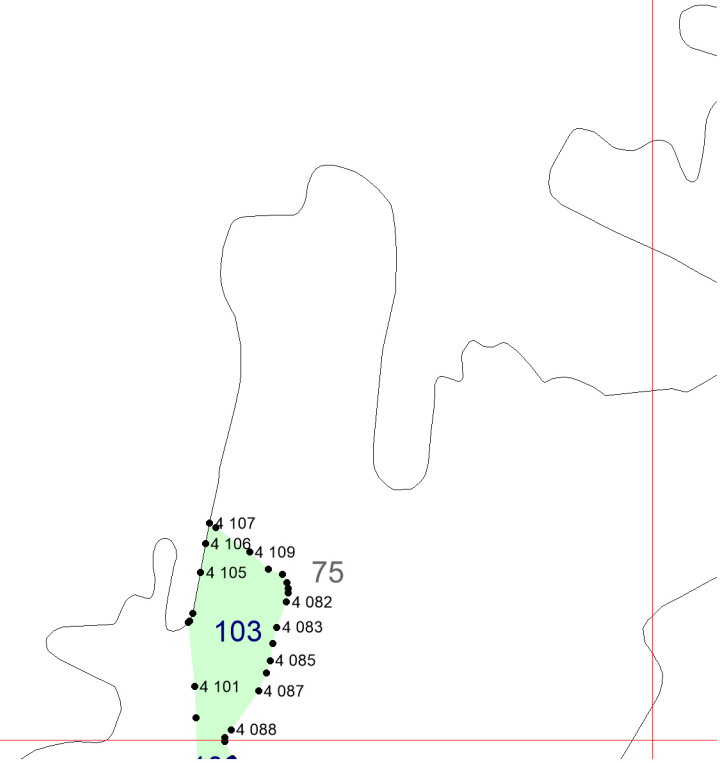


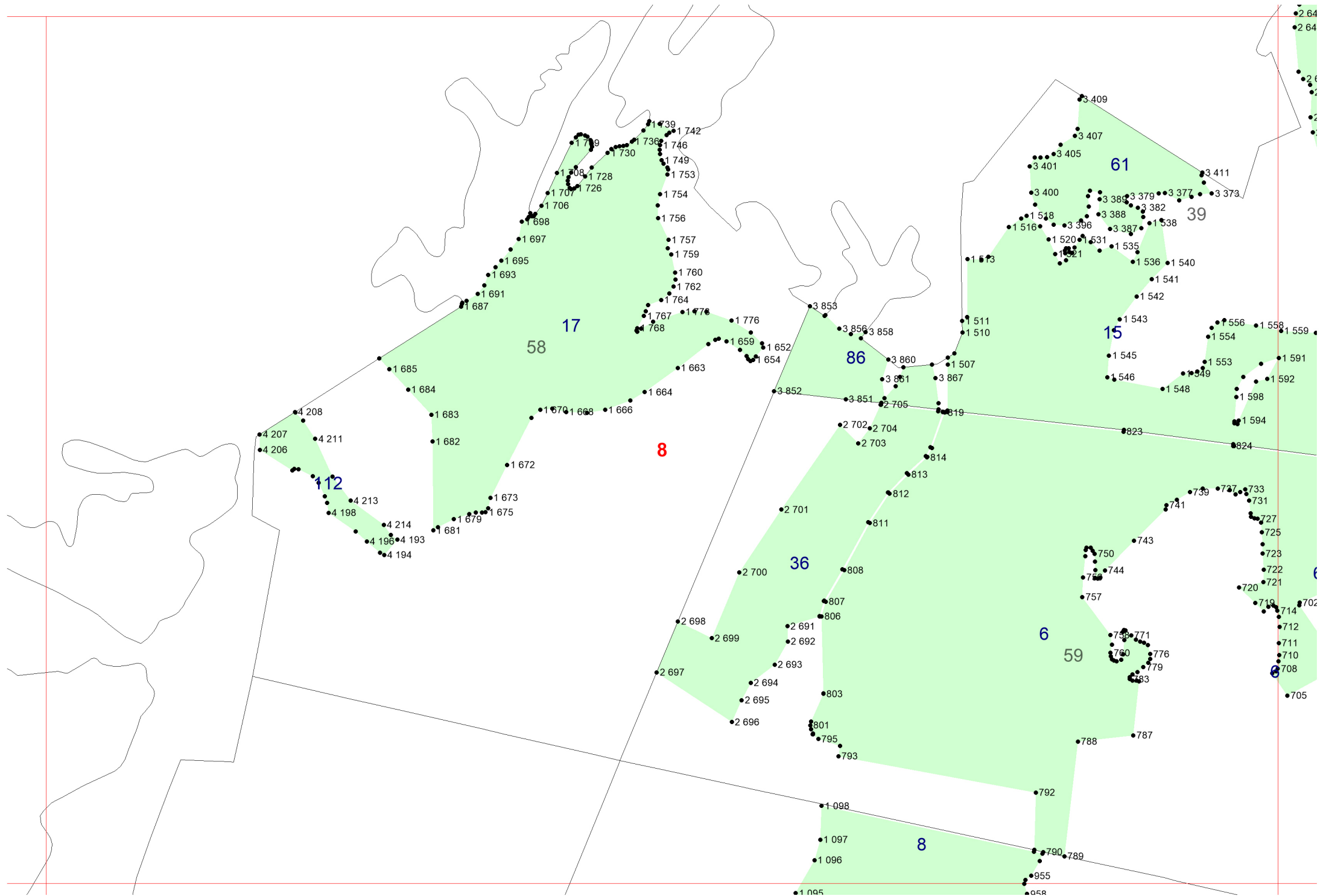


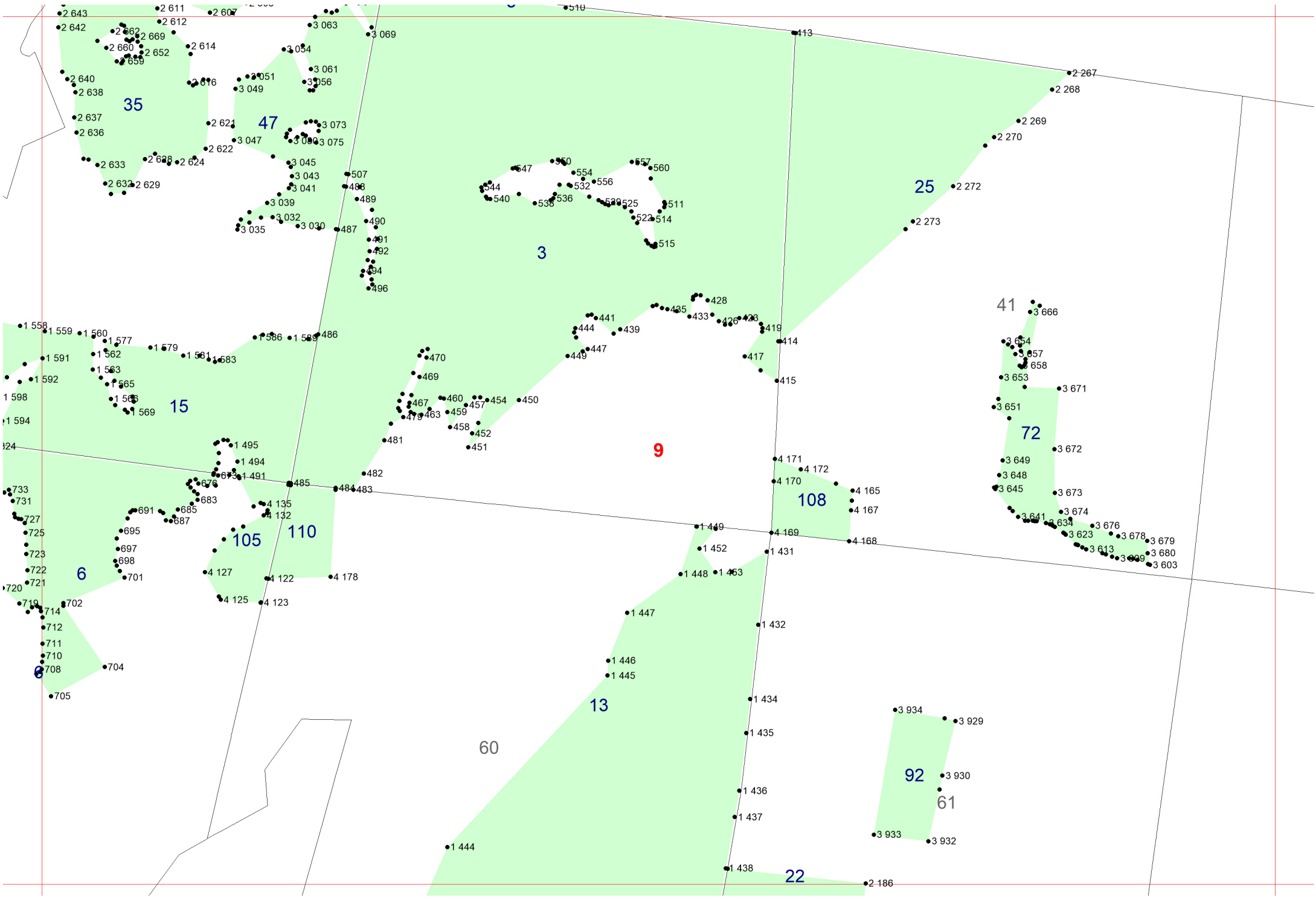




7







42

43

10

44

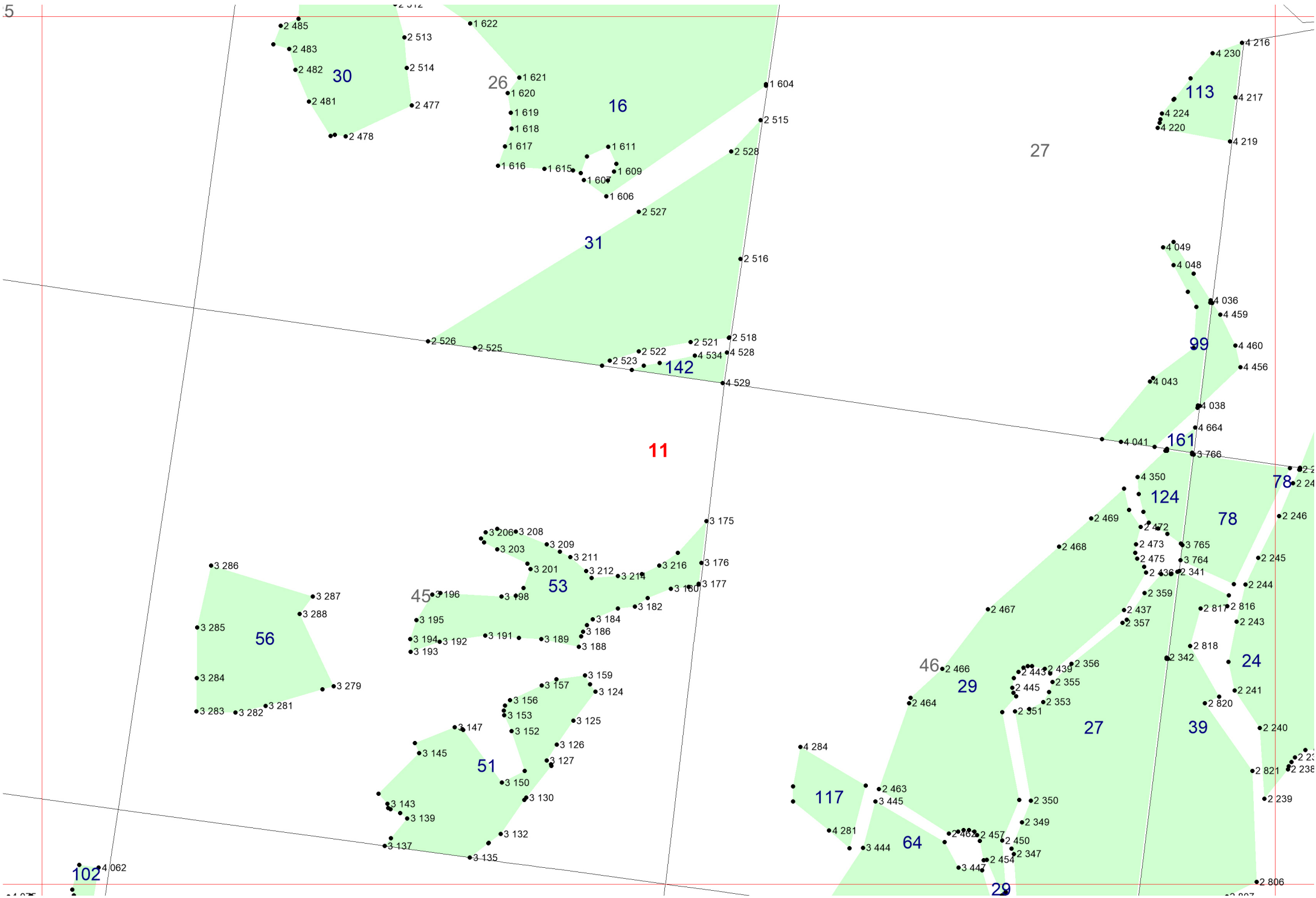
62

94

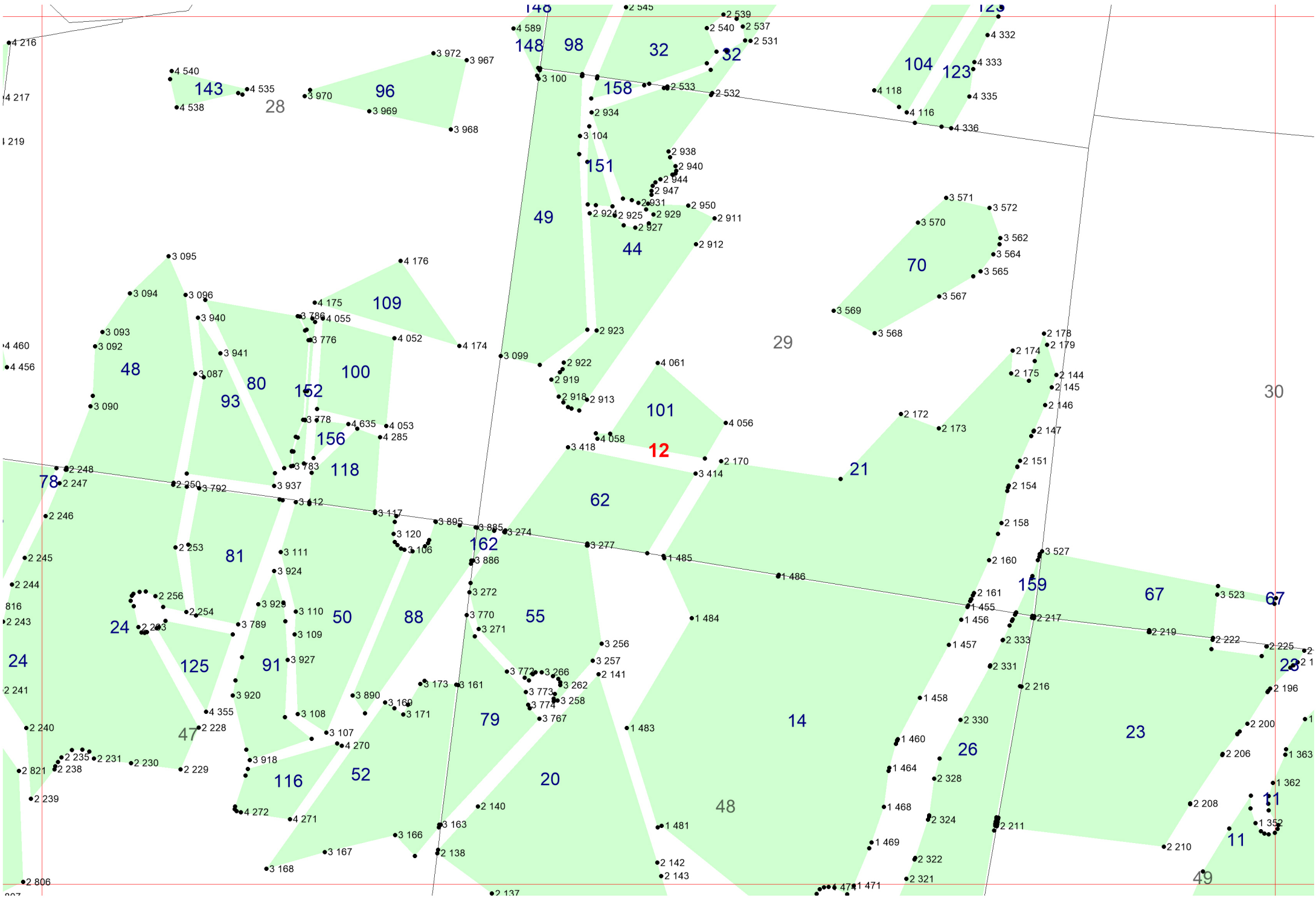
63

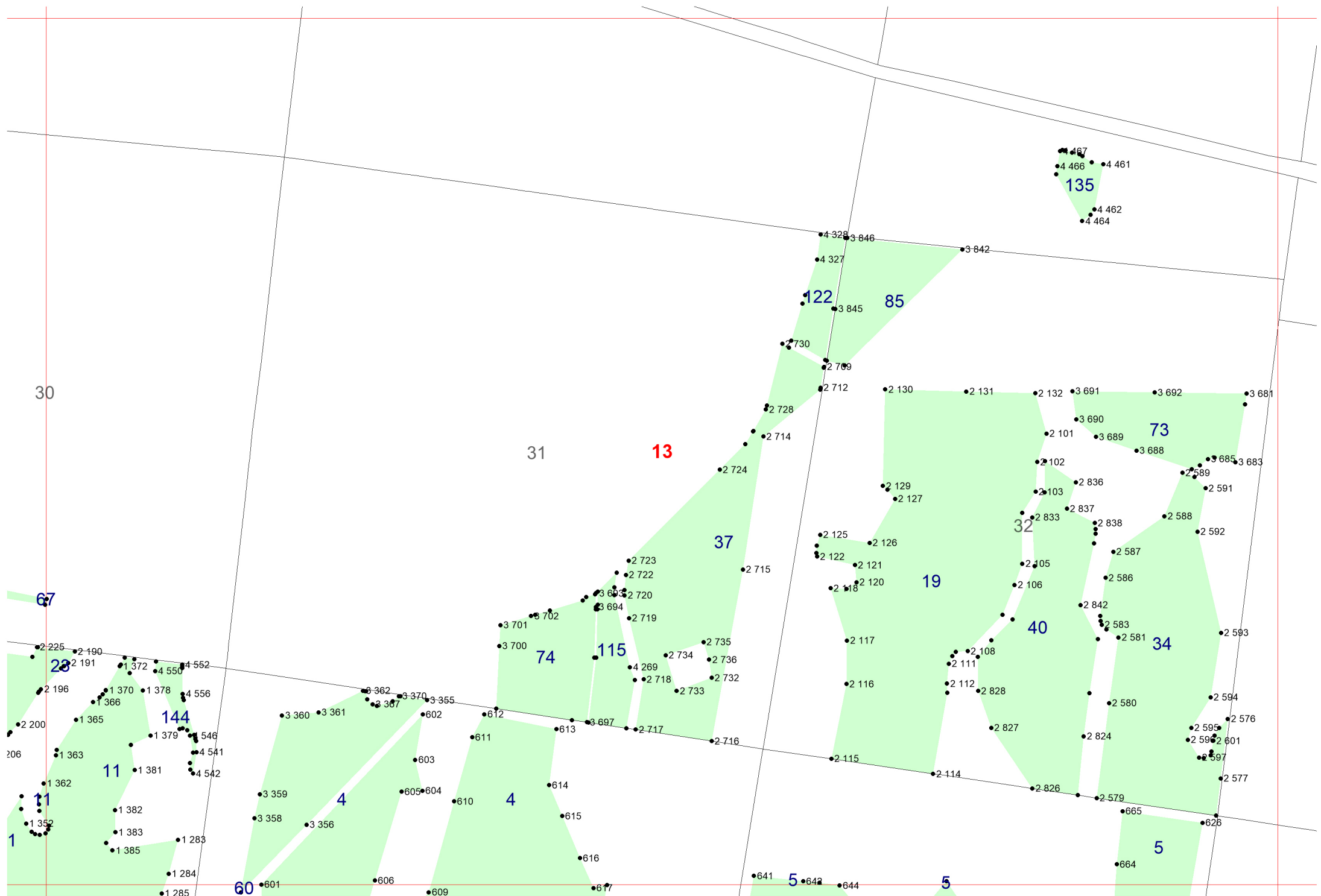
- 3 947
- 3 949
- 3 952
- 3 953
- 3 954
- 3 942
- 3 944
- 3 946
- 3 945

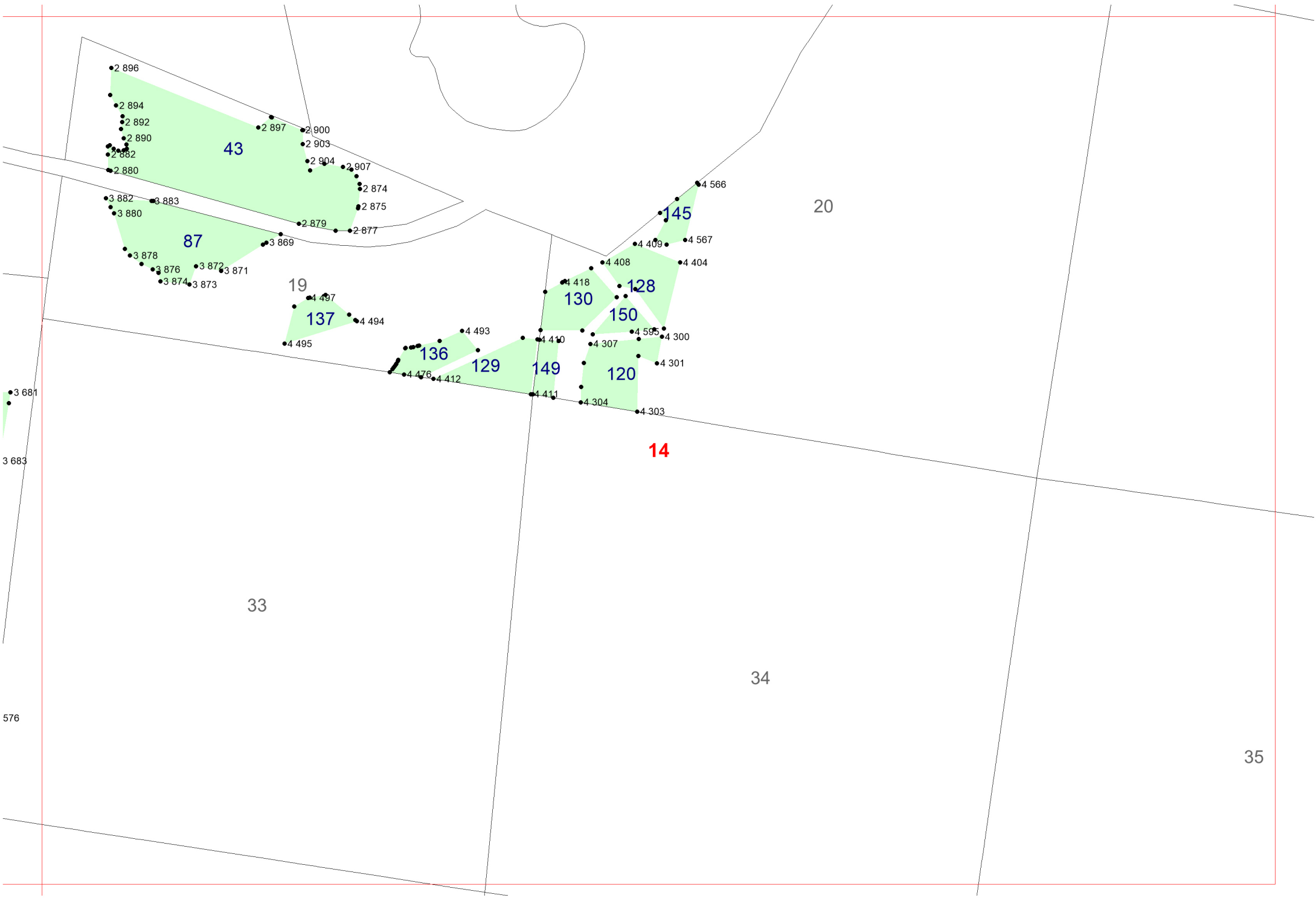
- 3 439
- 3 419
- 3 438
- 3 437
- 3 436
- 3 434
- 3 431
- 3 429
- 3 425
- 3 423
- 3 420











43

87

19

137

136

129

149

130

128

150

120

14

145

20

33

34

35

15

2 896

2 894

2 892

2 890

2 882

2 880

2 897

2 900

2 903

2 904

2 907

2 874

2 875

2 879

2 877

4 566

3 882

3 883

3 880

3 869

3 878

3 876

3 872

3 871

3 874

3 873

4 497

4 494

4 495

4 493

4 418

4 408

4 409

4 567

4 404

4 410

4 307

4 595

4 300

4 301

4 410

4 307

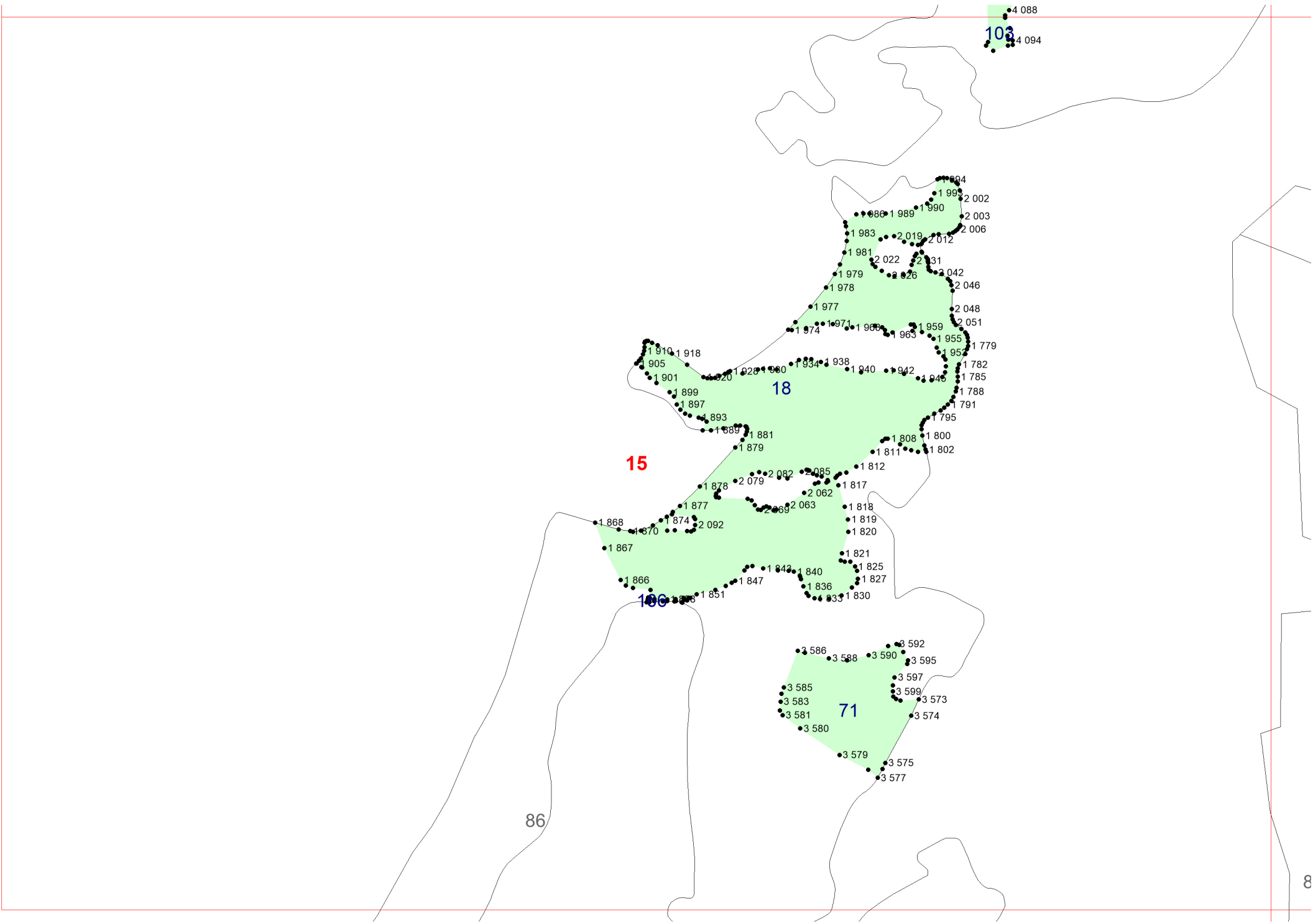
4 304

4 303

3 681

3 683

576



4 088  
103  
4 094

15

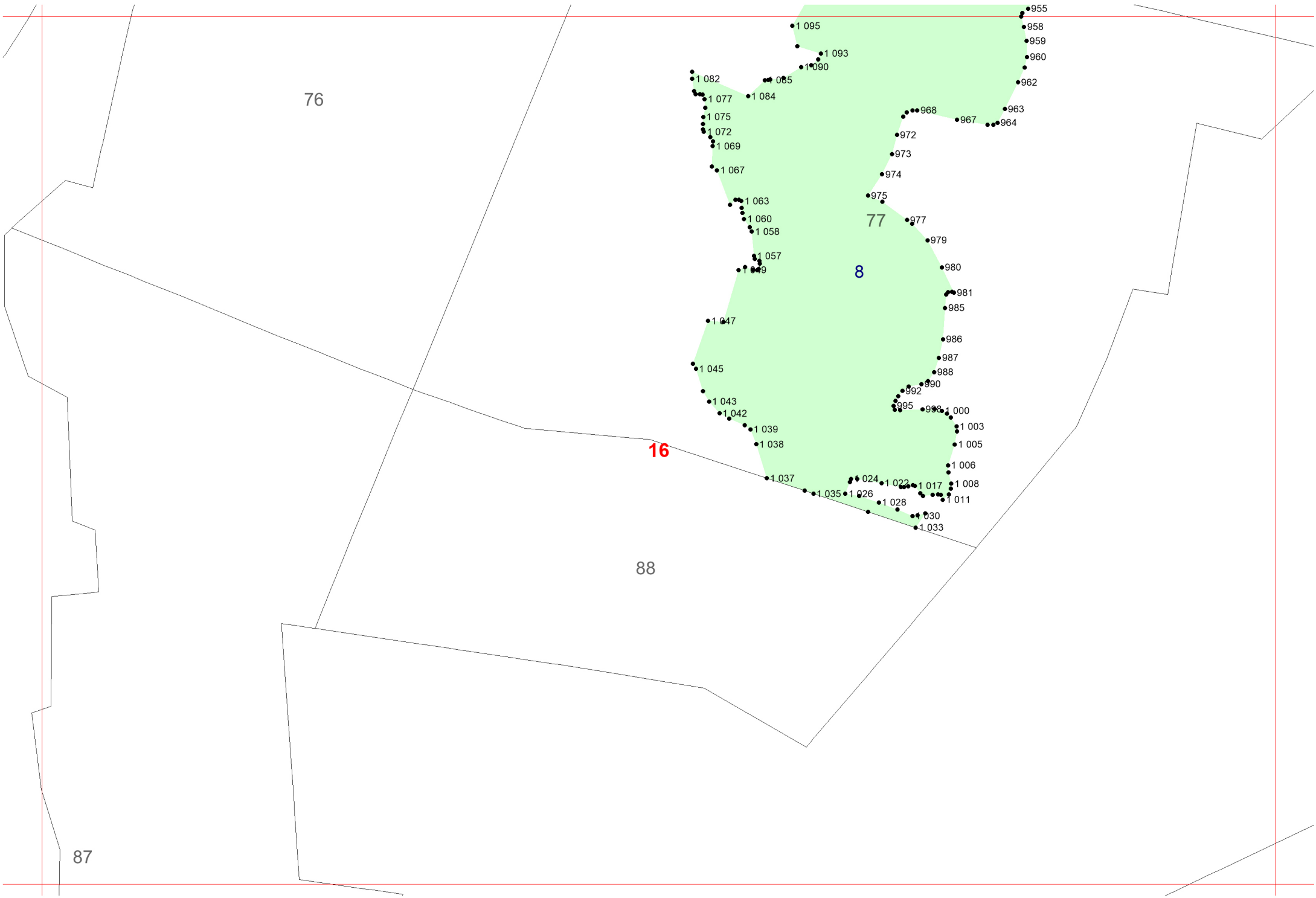
18

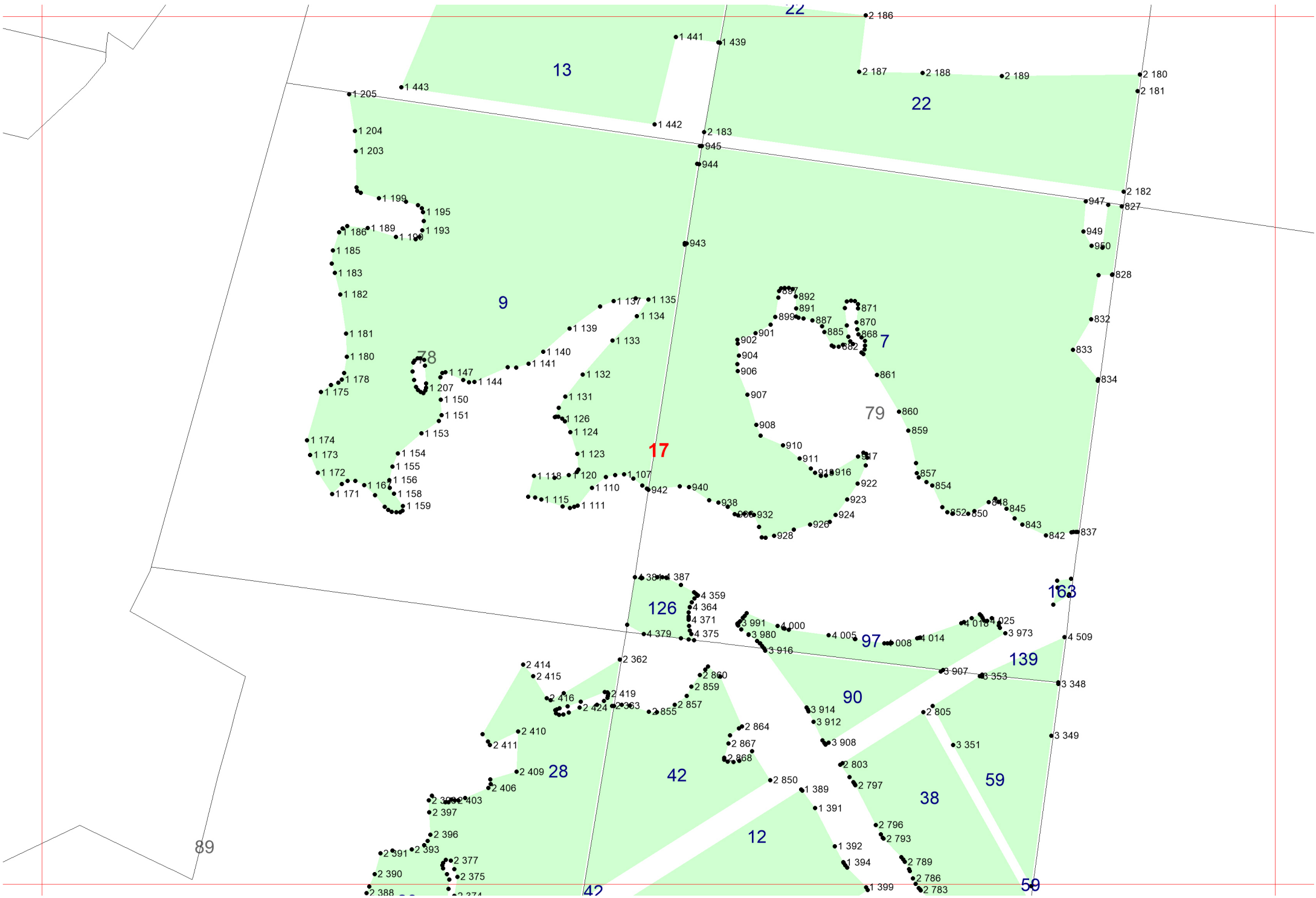
71

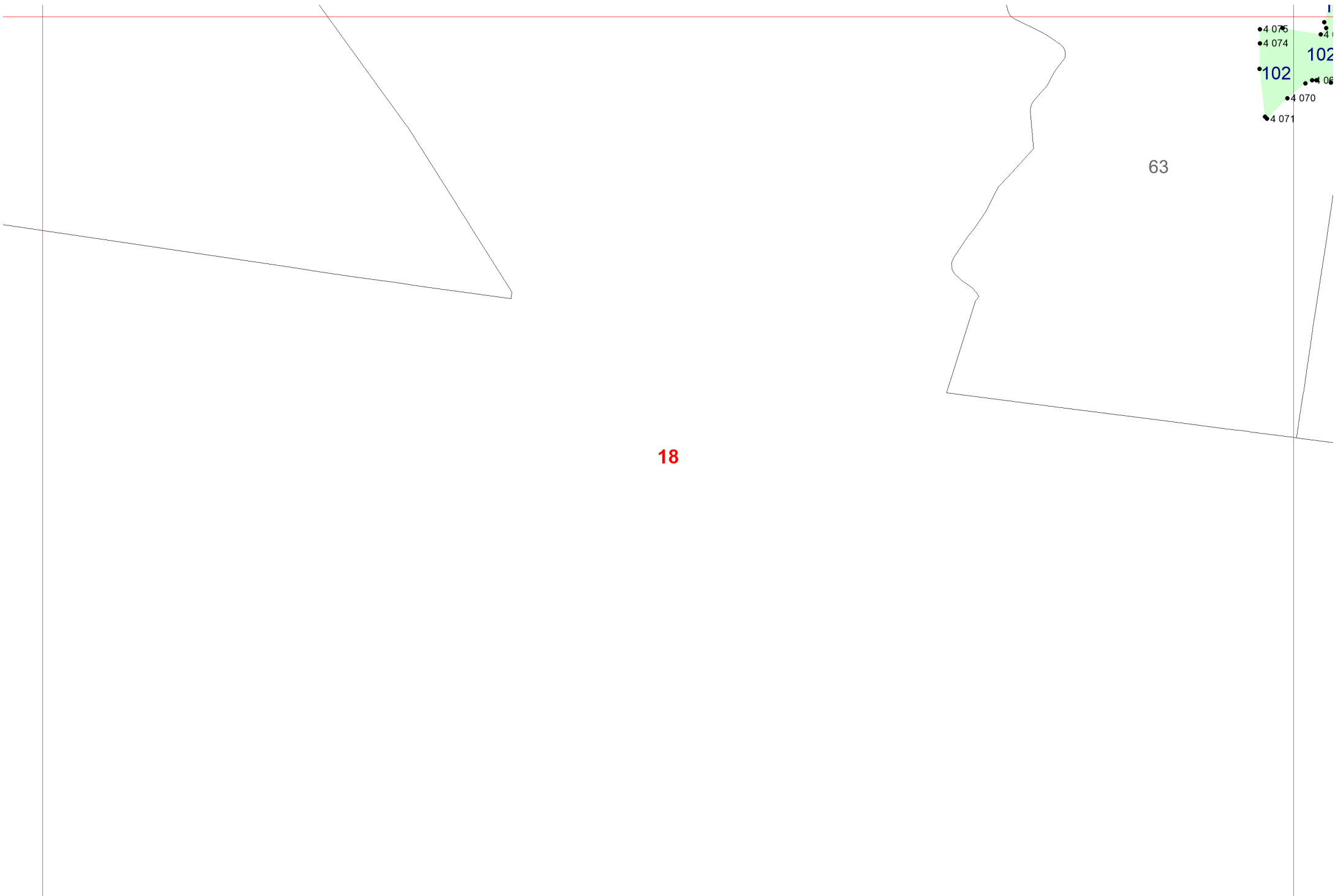
106

86

8





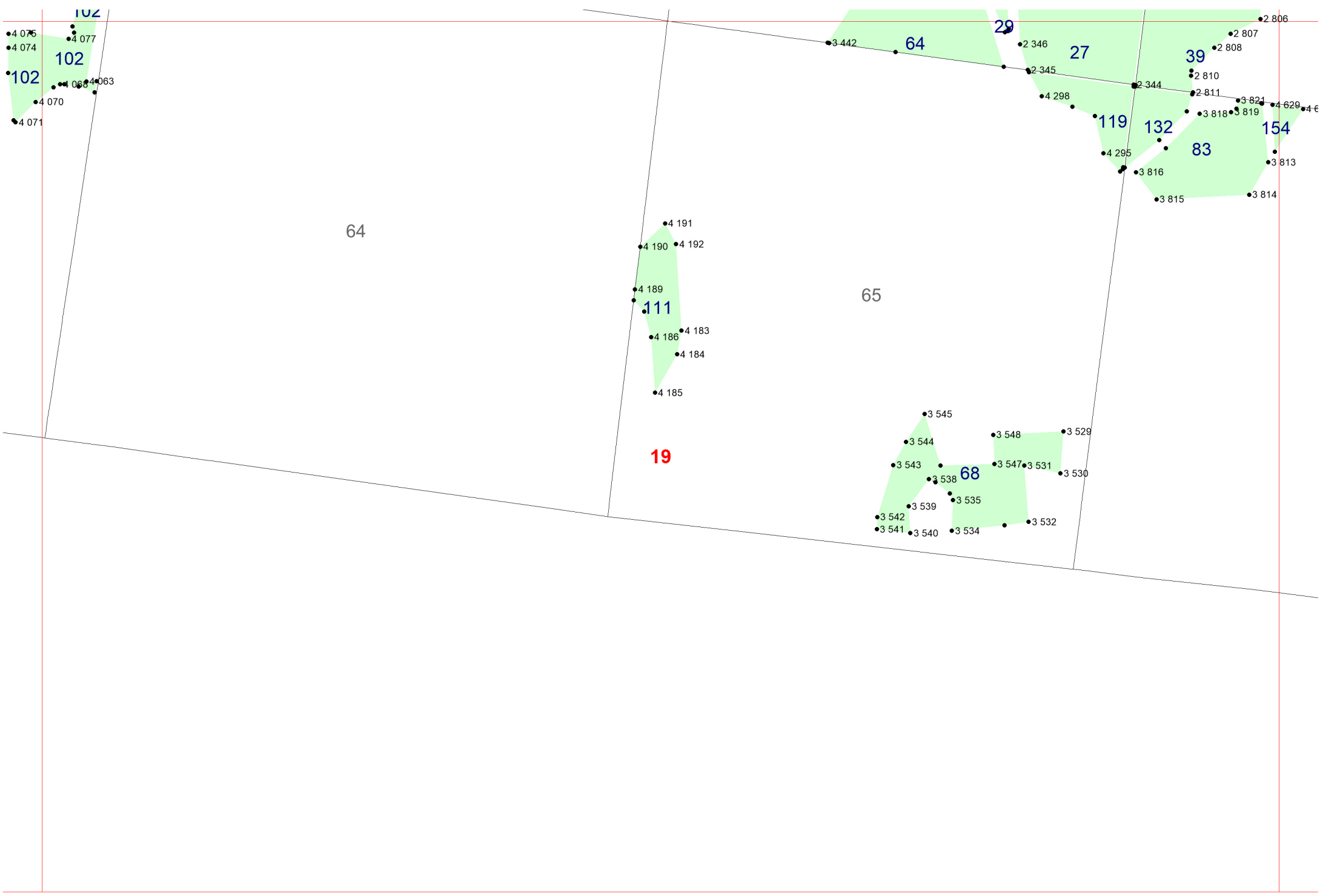


18

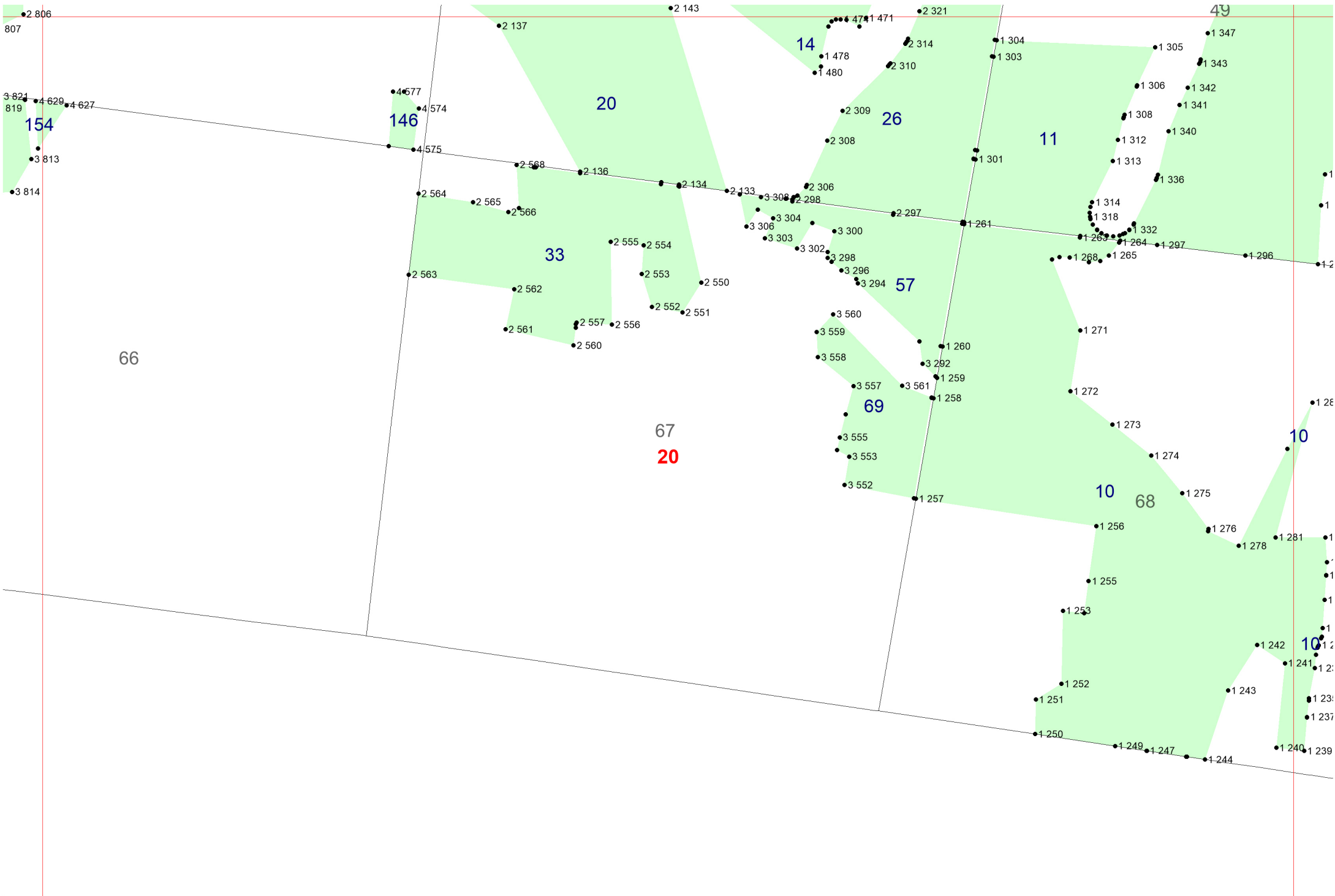
63

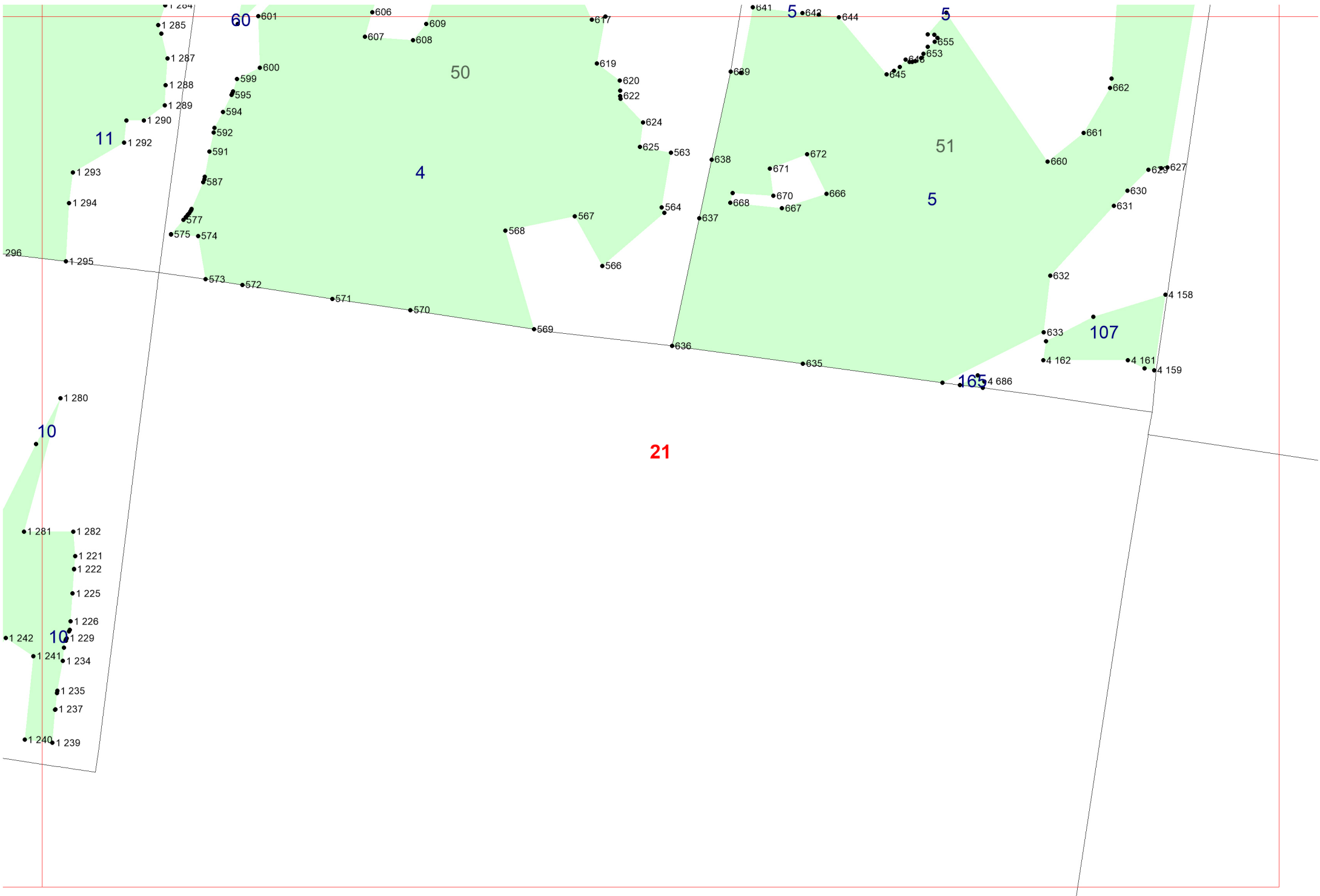
4 075  
4 074  
102  
4 066  
4 070  
4 071

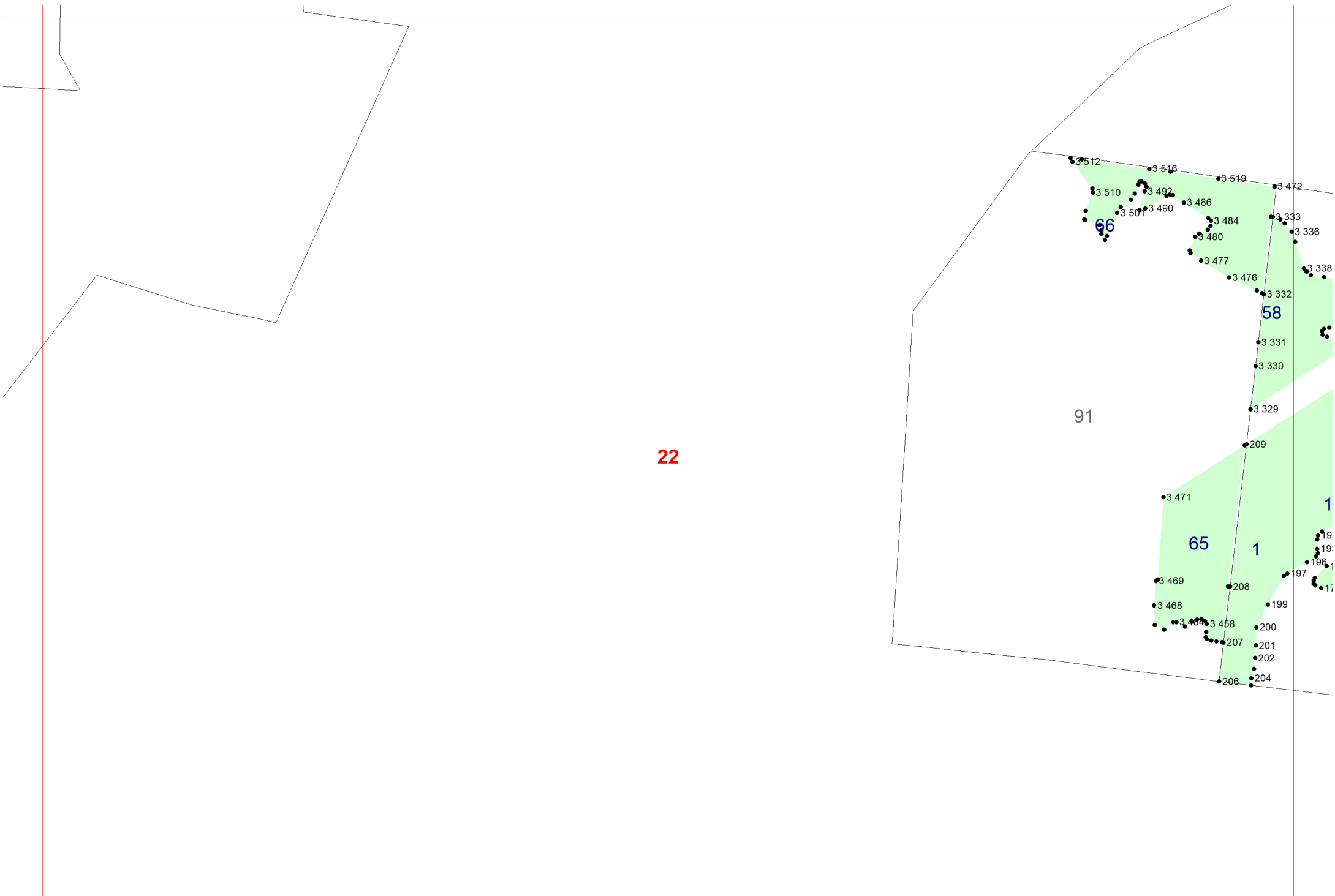
102











22

91

66

65

1

58

