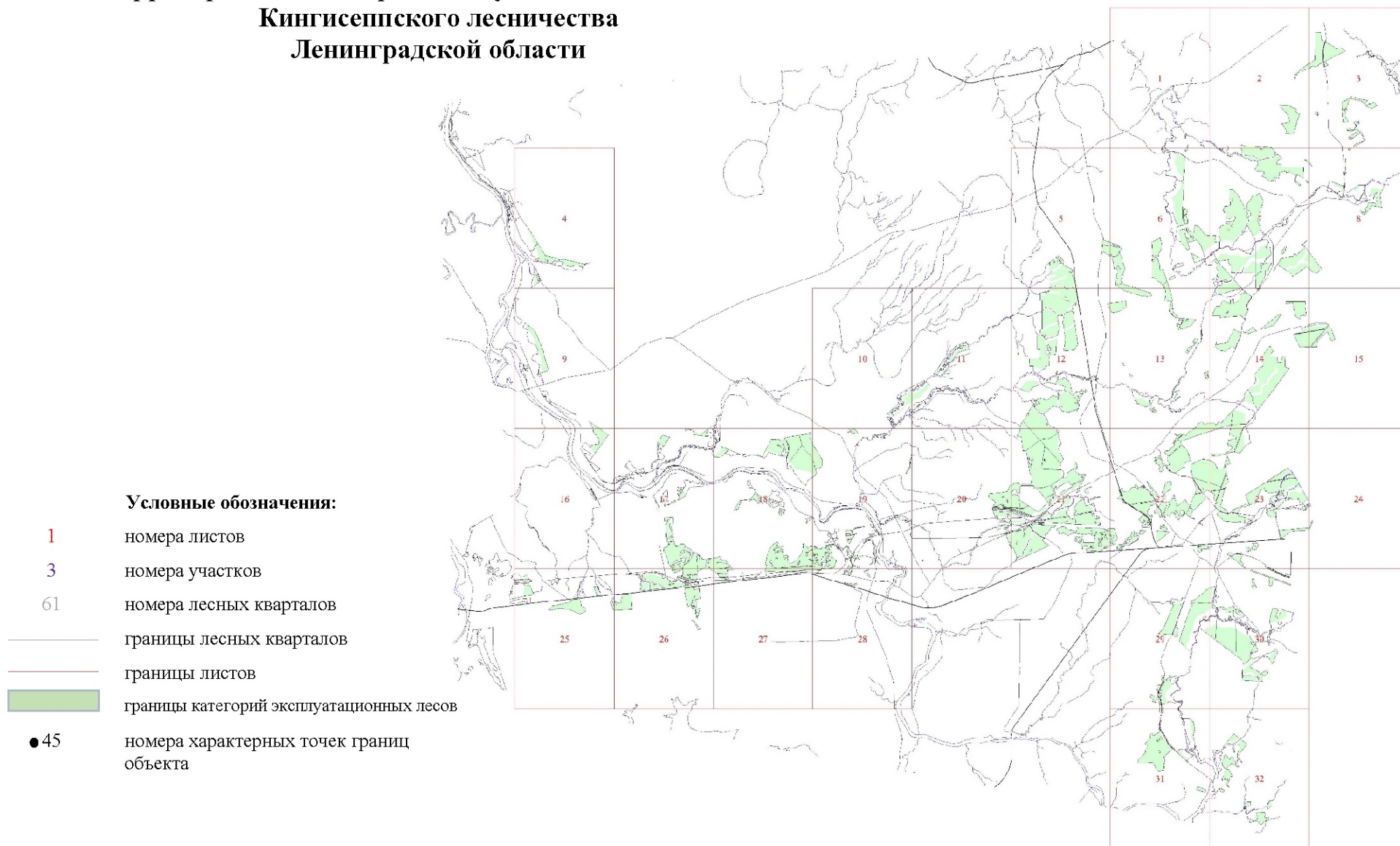


**Графическое описание местоположения границ земель,
на которых располагаются эксплуатационные леса
на территории Александровского участкового лесничества
Кингисеппского лесничества
Ленинградской области**

Приложение № 10 к приказу Рослесхоза
от 27.02.2023 № 165



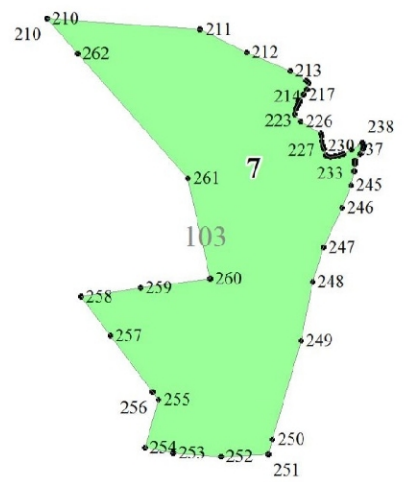
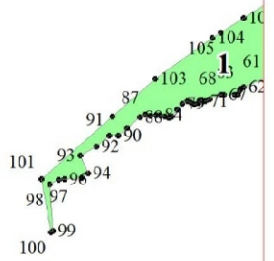
1

616
617
618

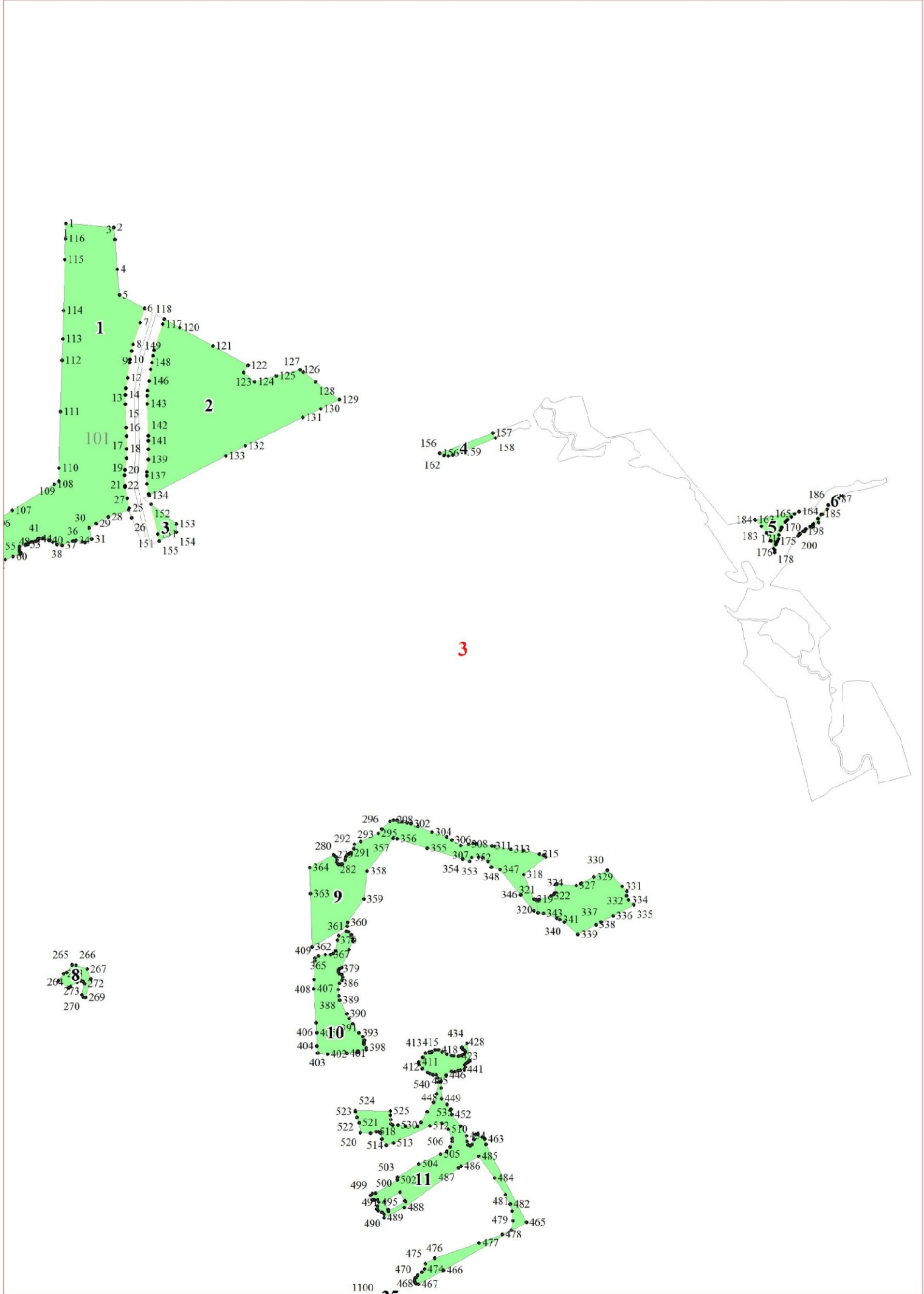
15

20

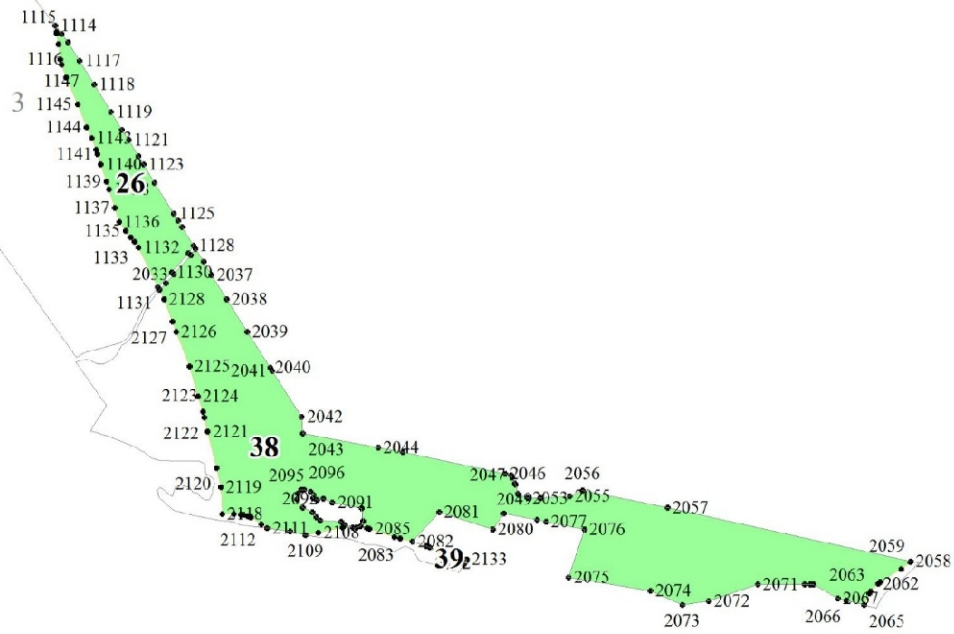
2

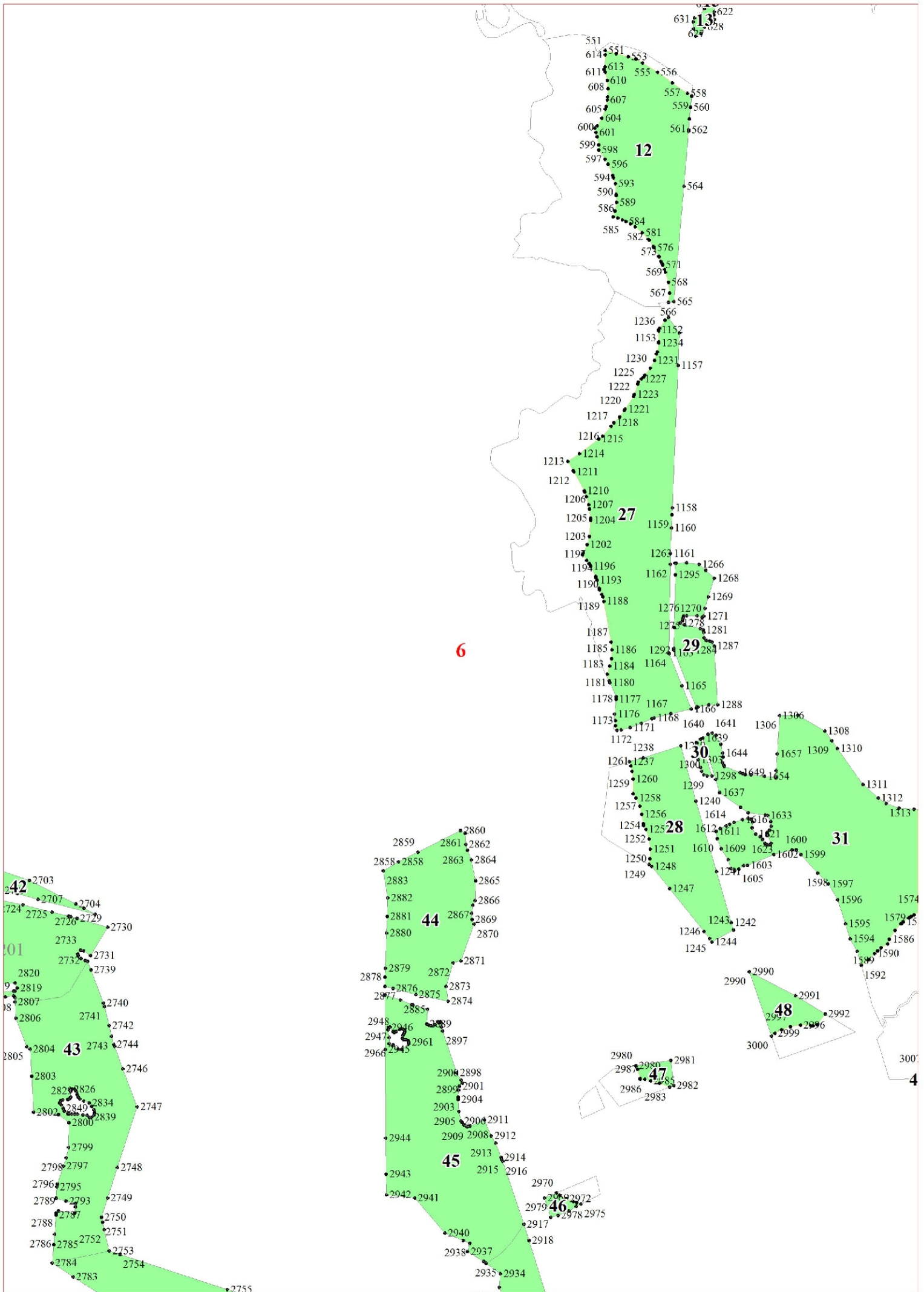


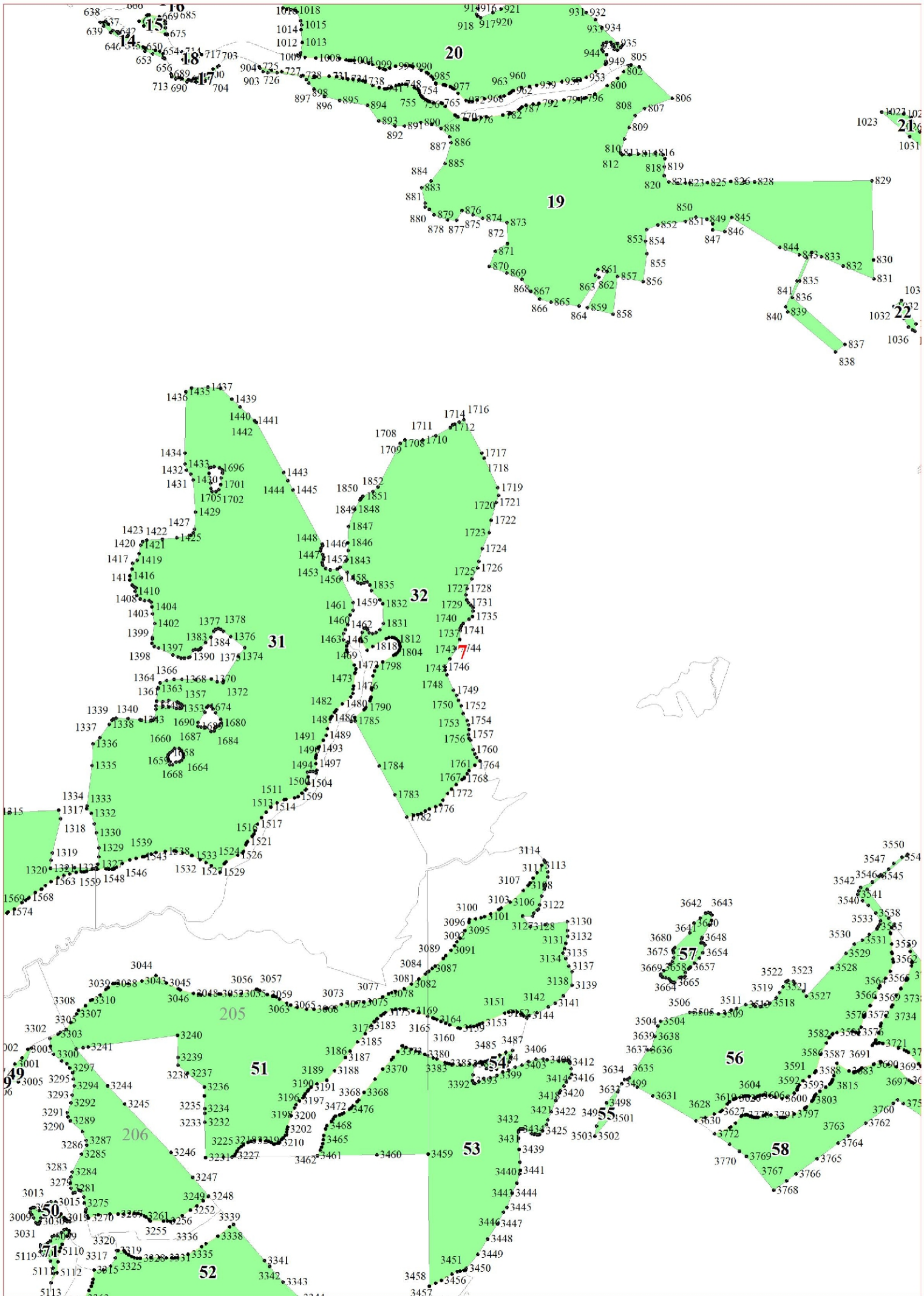
3

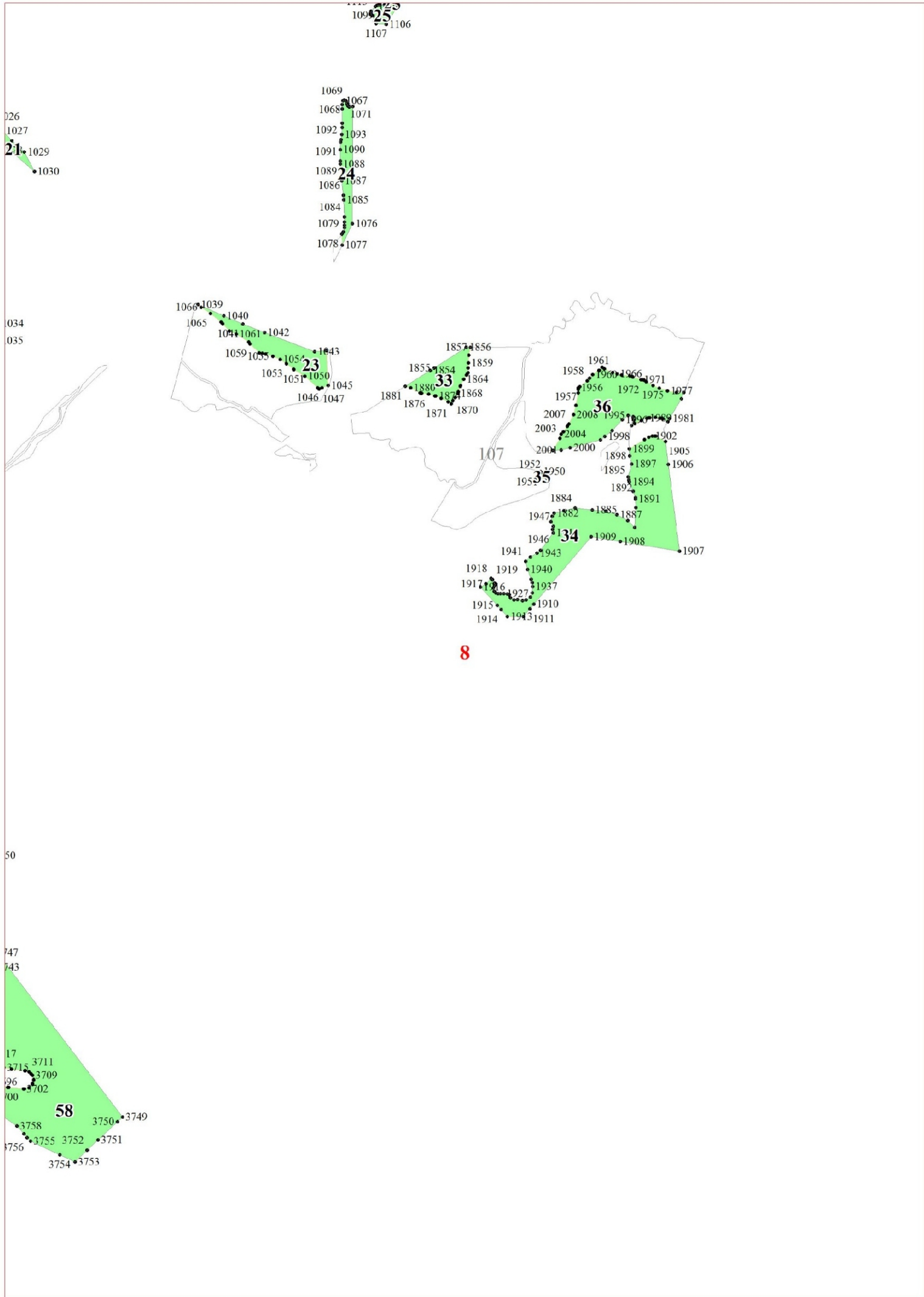


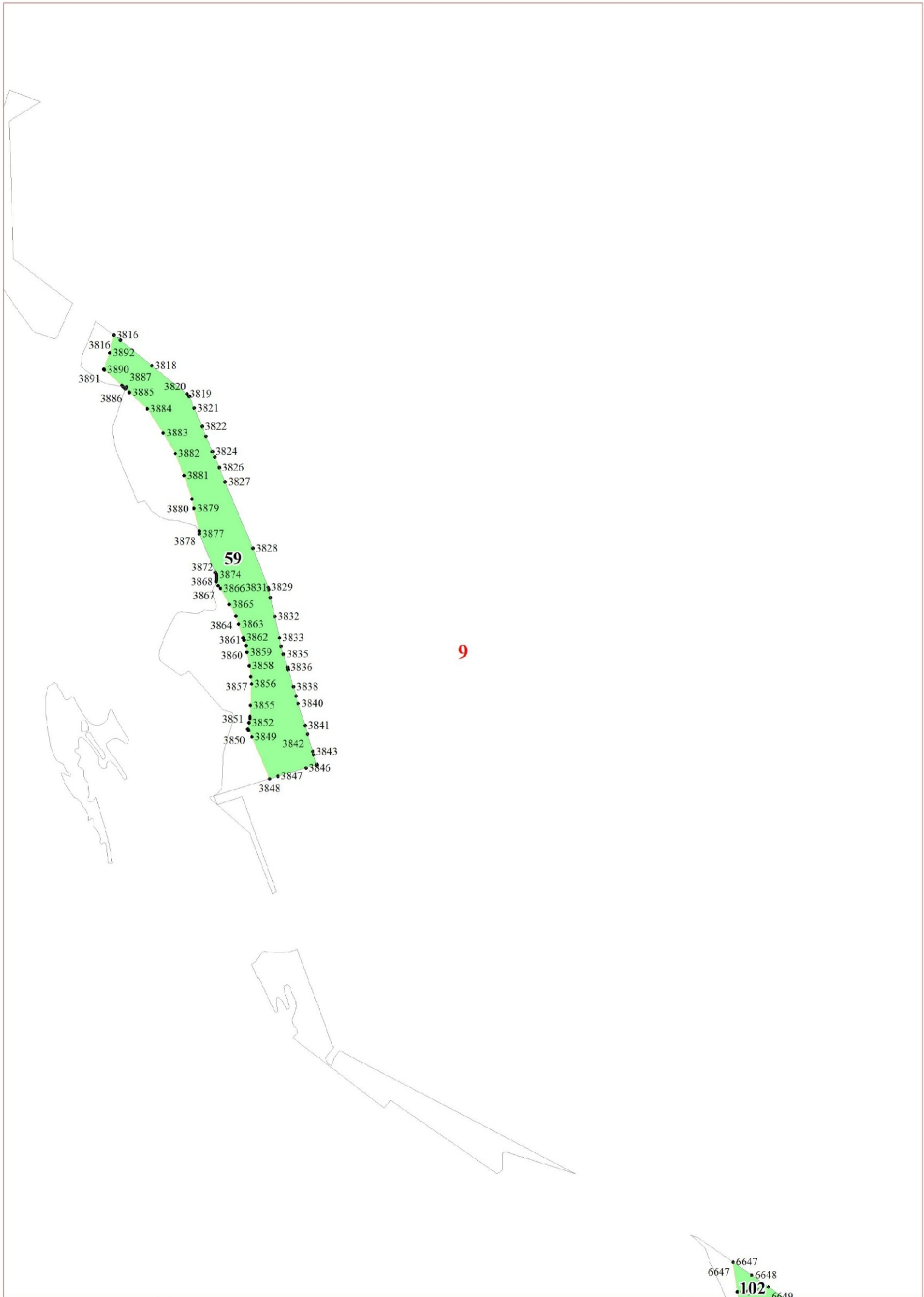
4

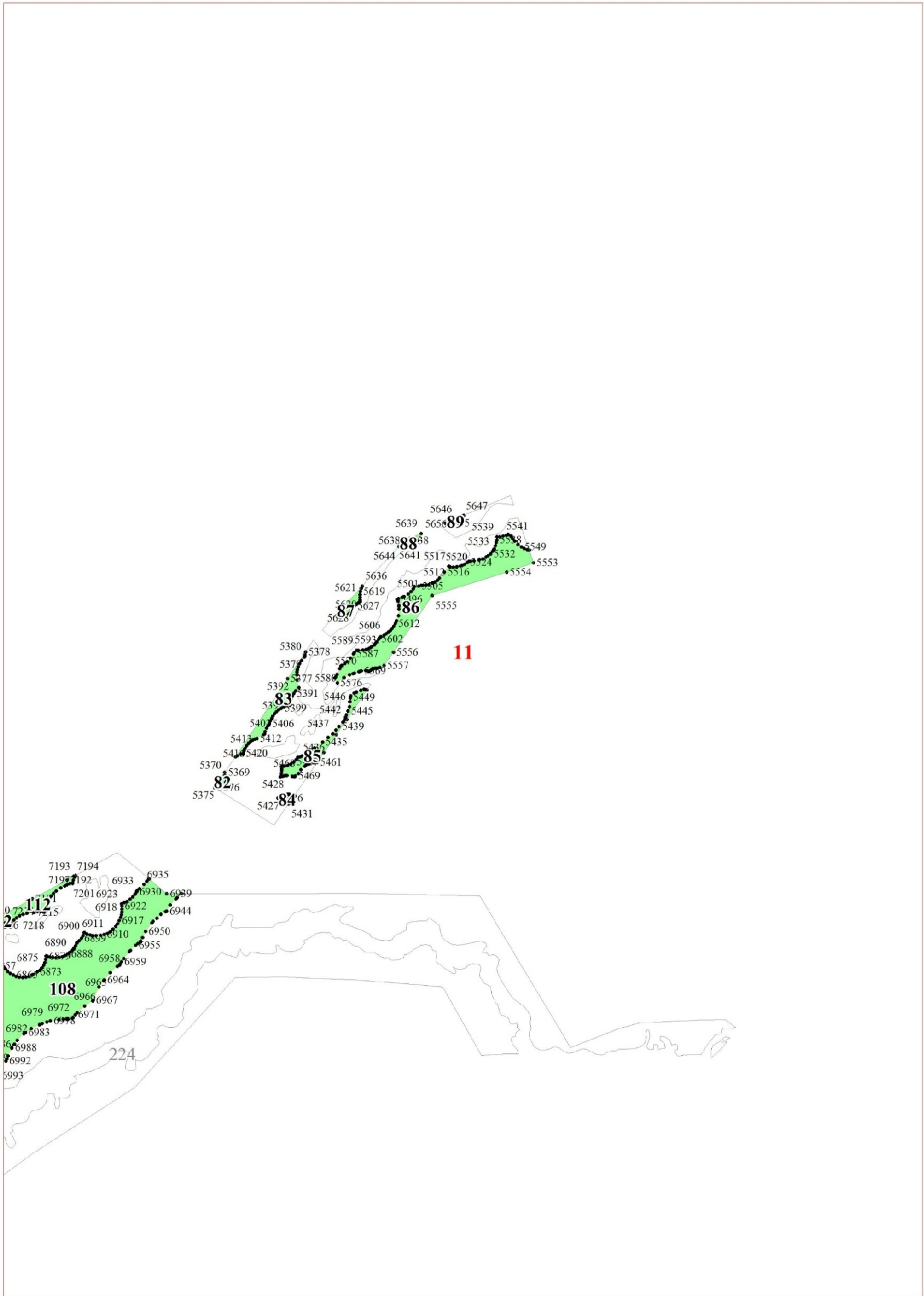


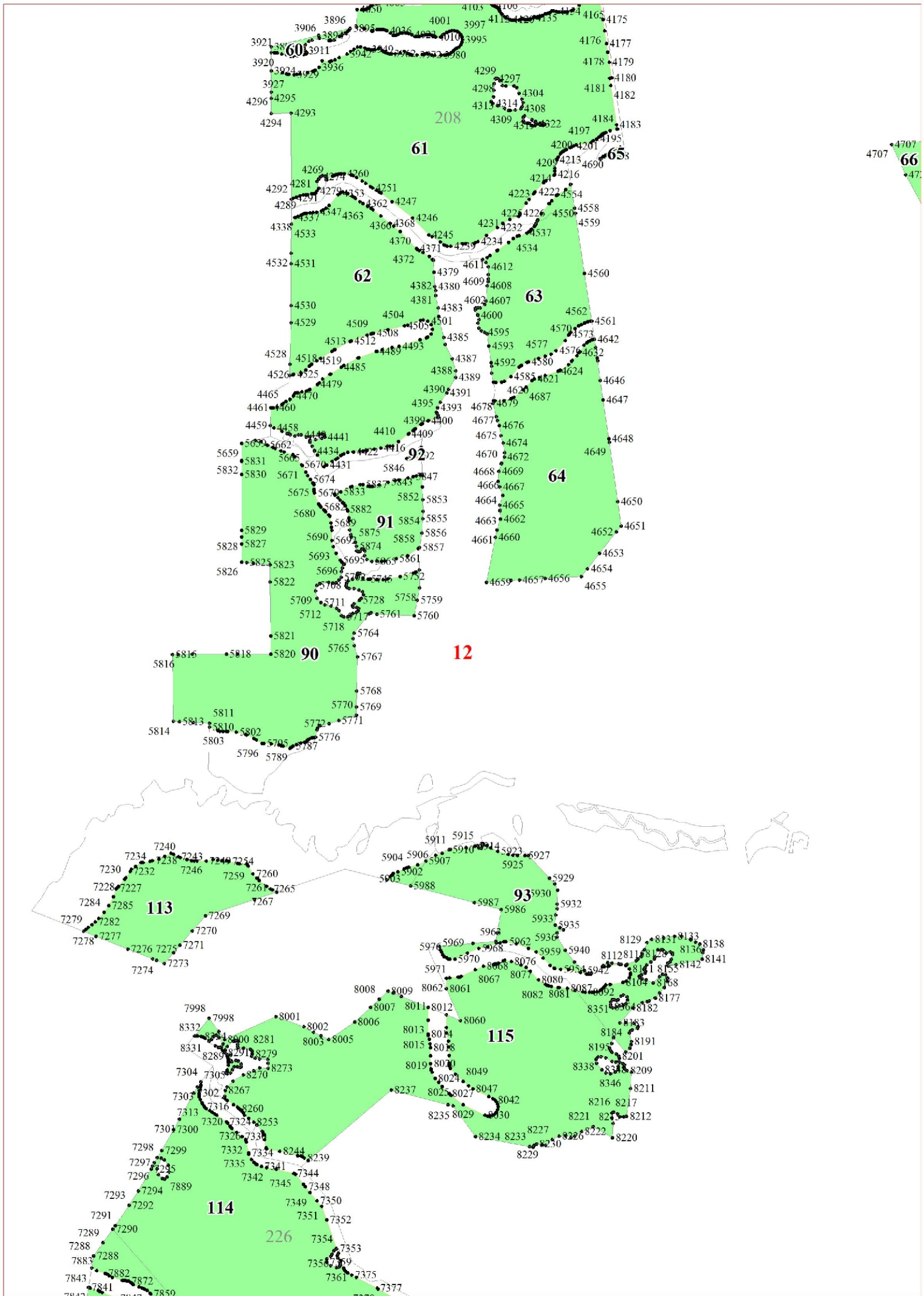


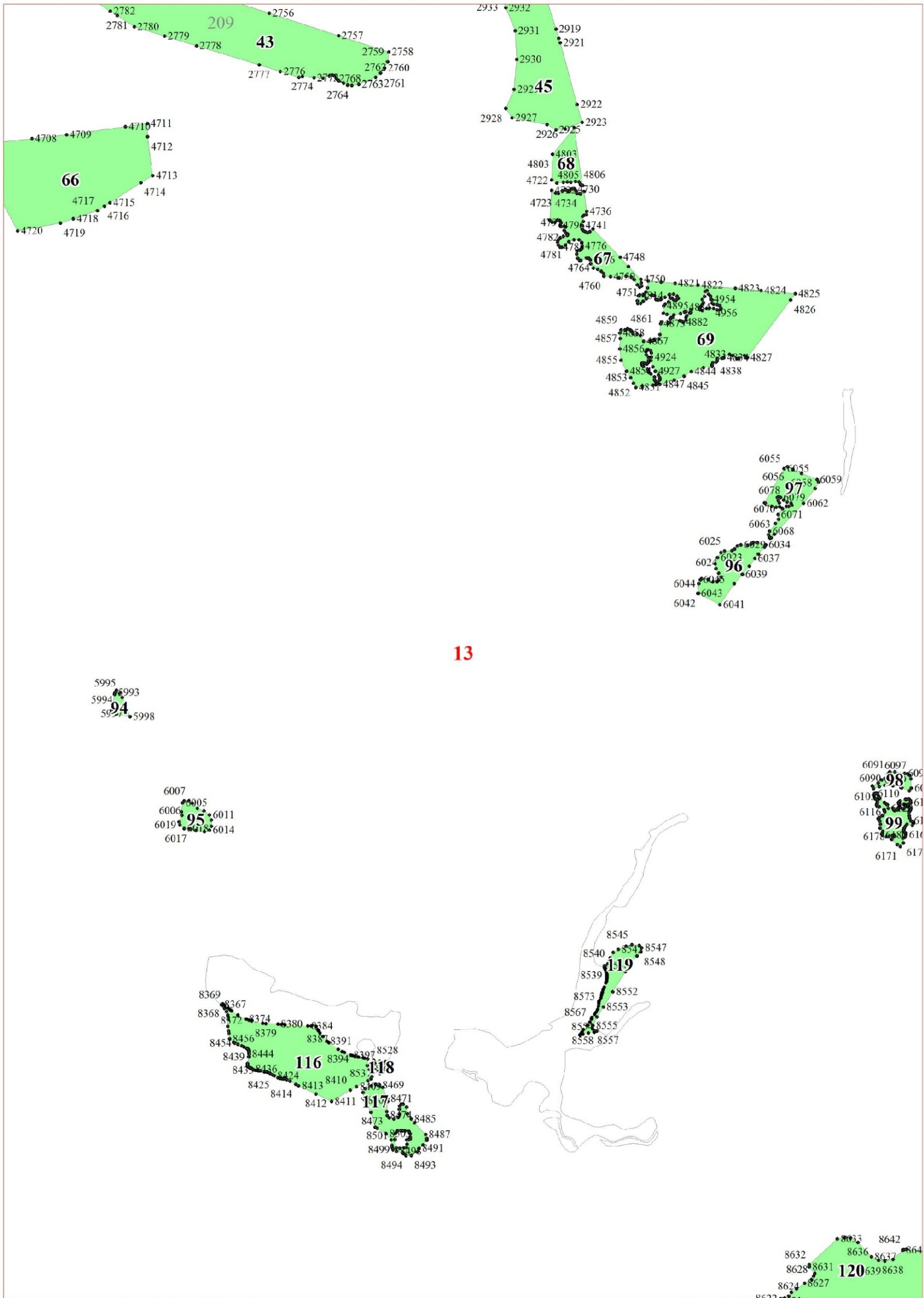


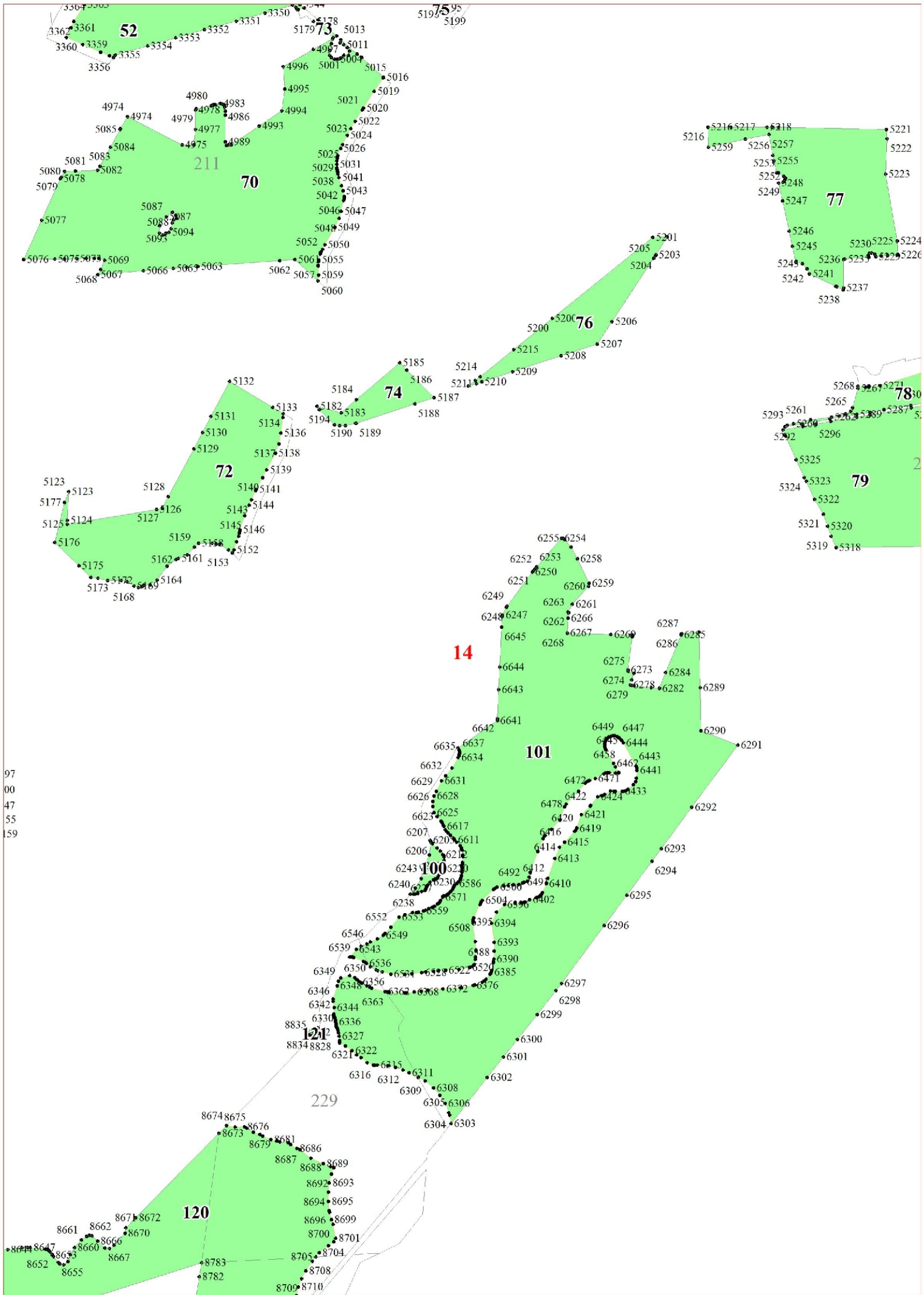


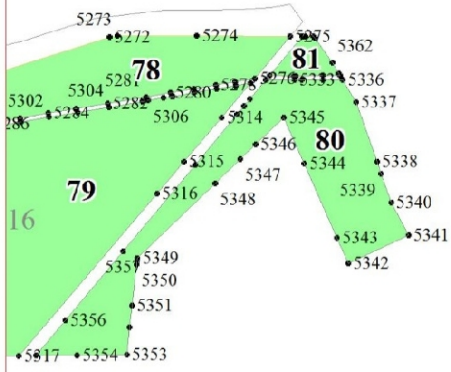




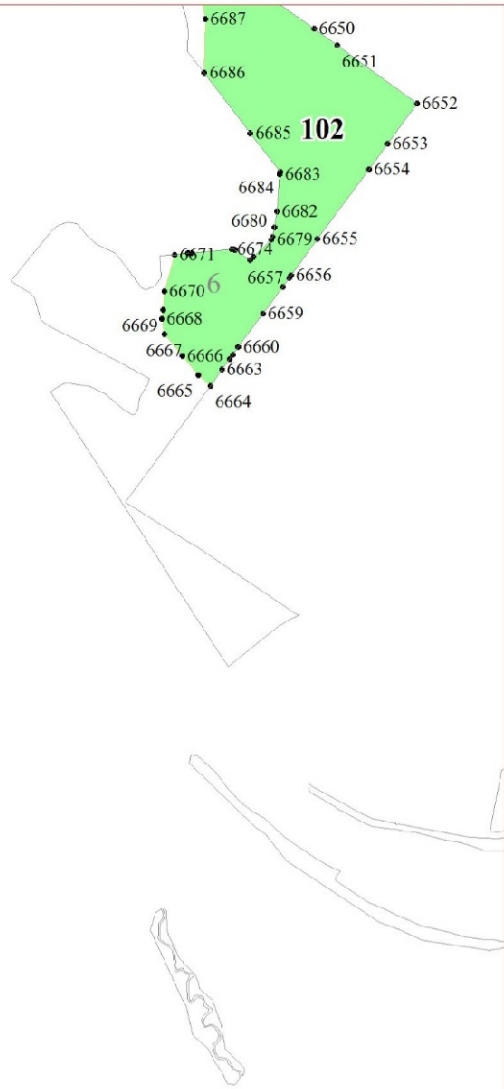




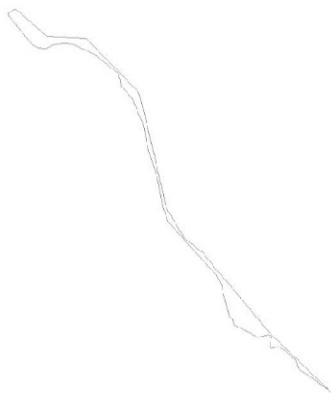




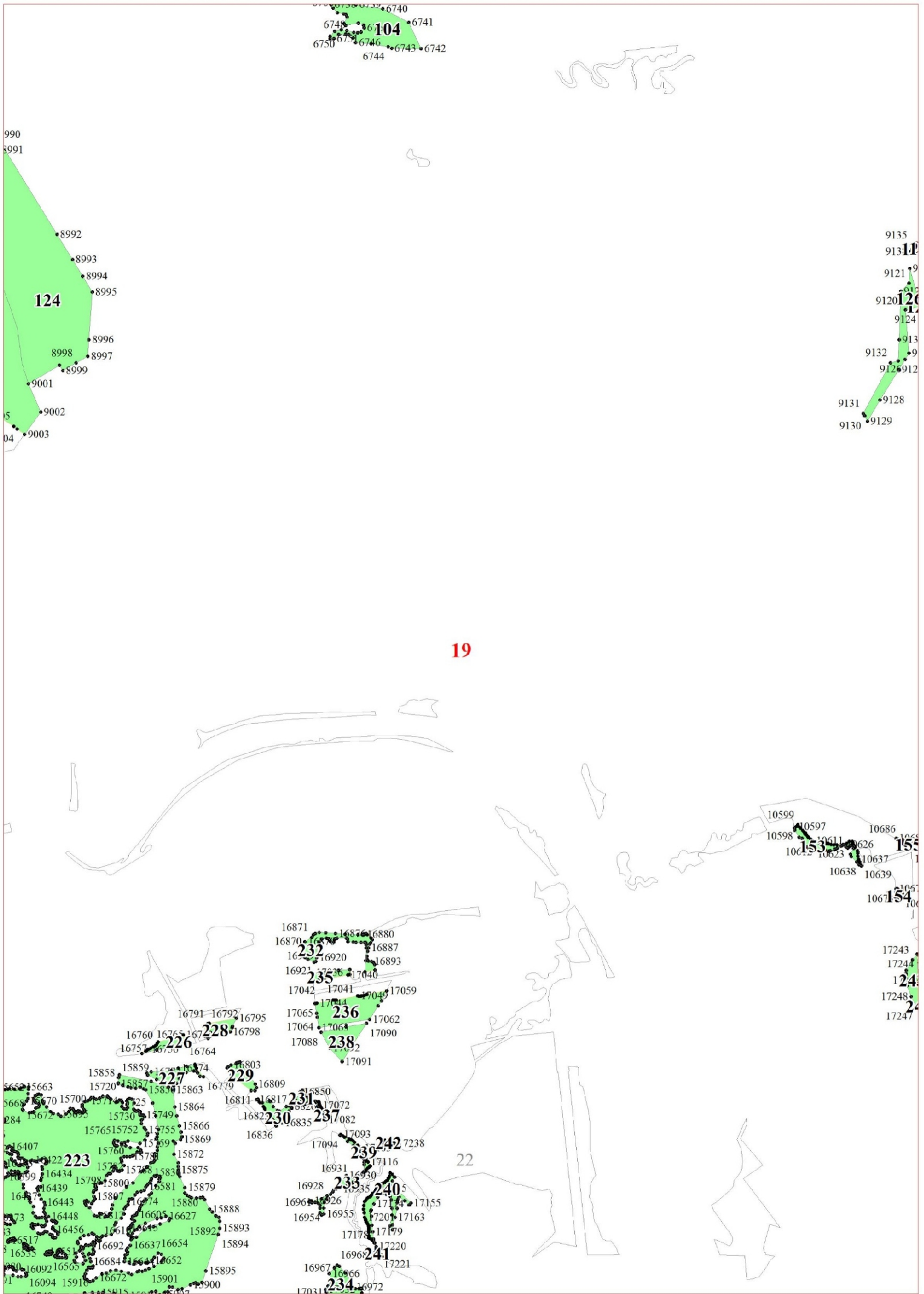
15



16



17



27 9136

122
121
2623

125
26

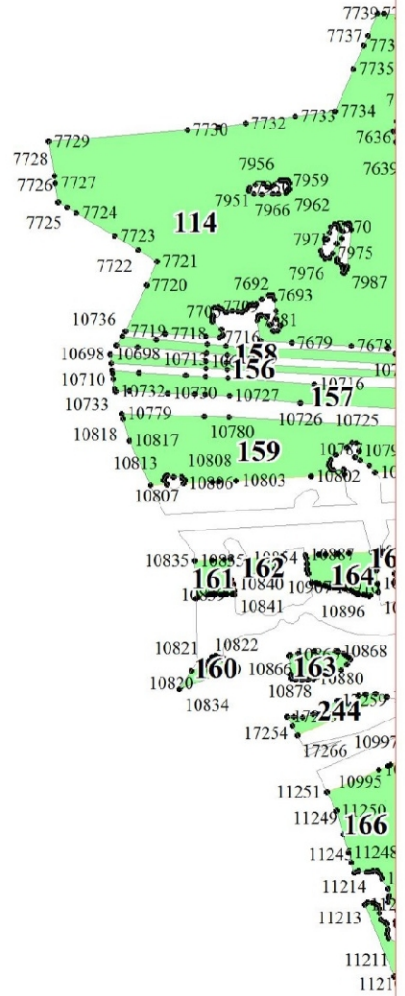
20

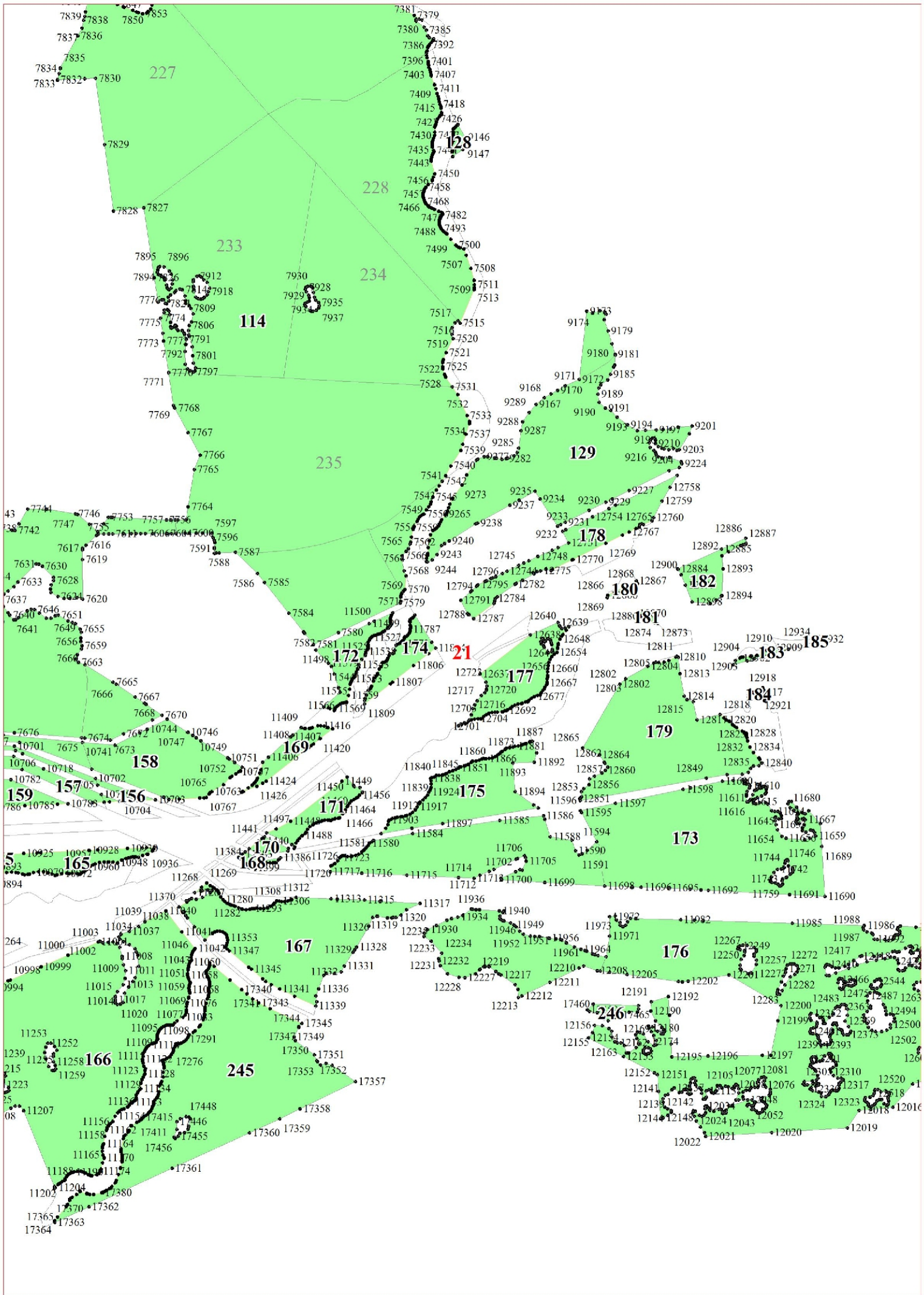
689
0690

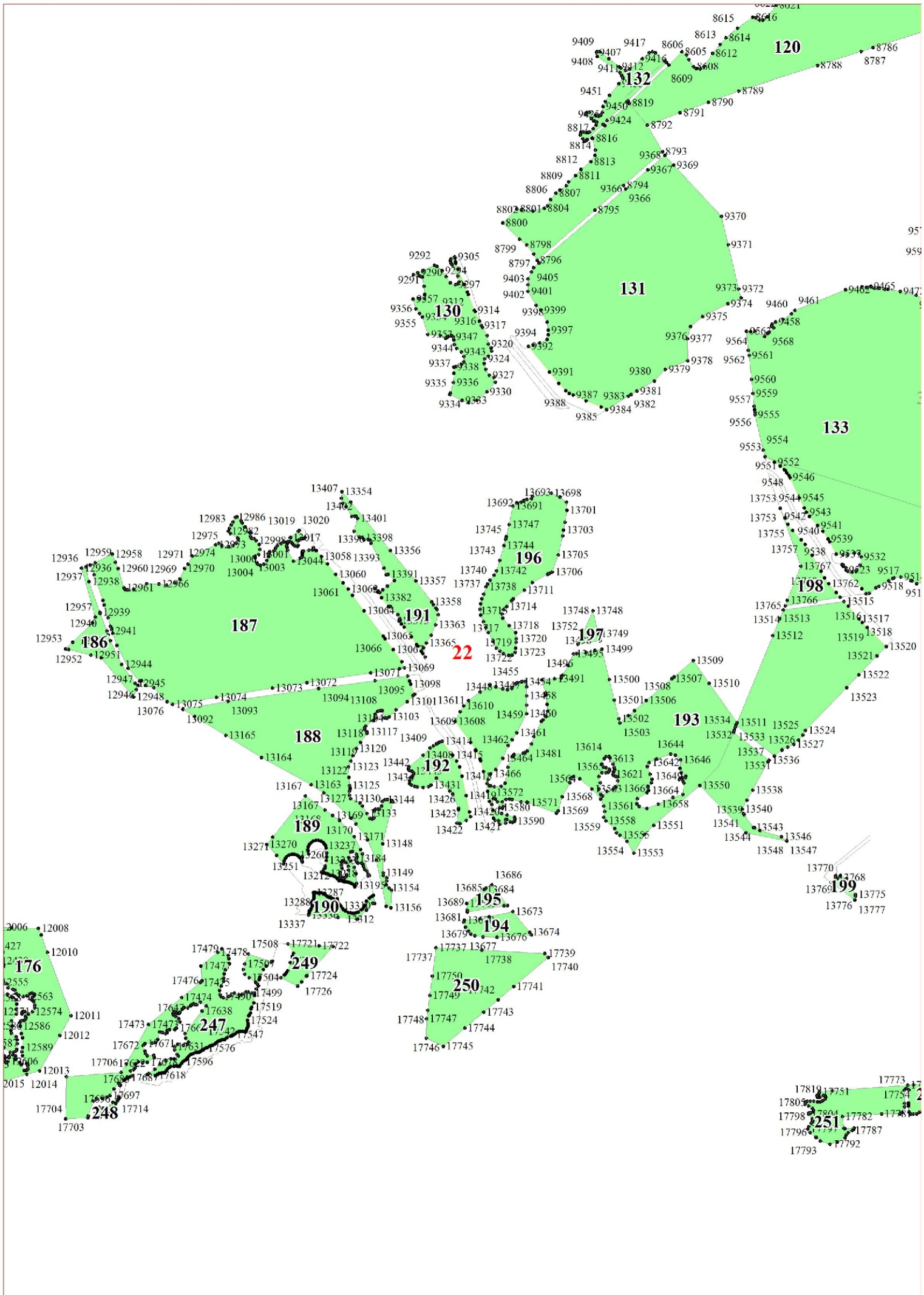
7243

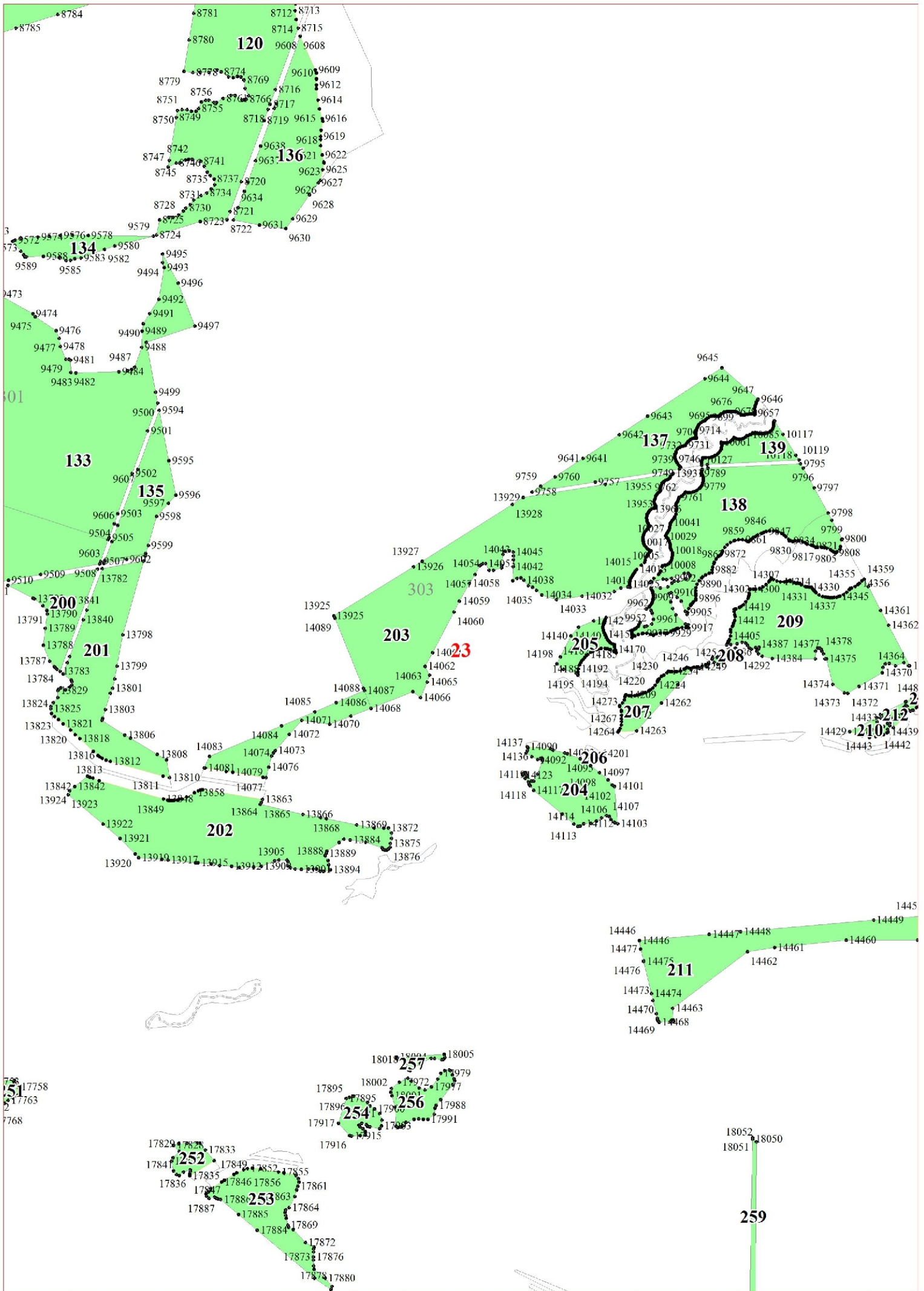
7245

7246









24

4363
14482
14485

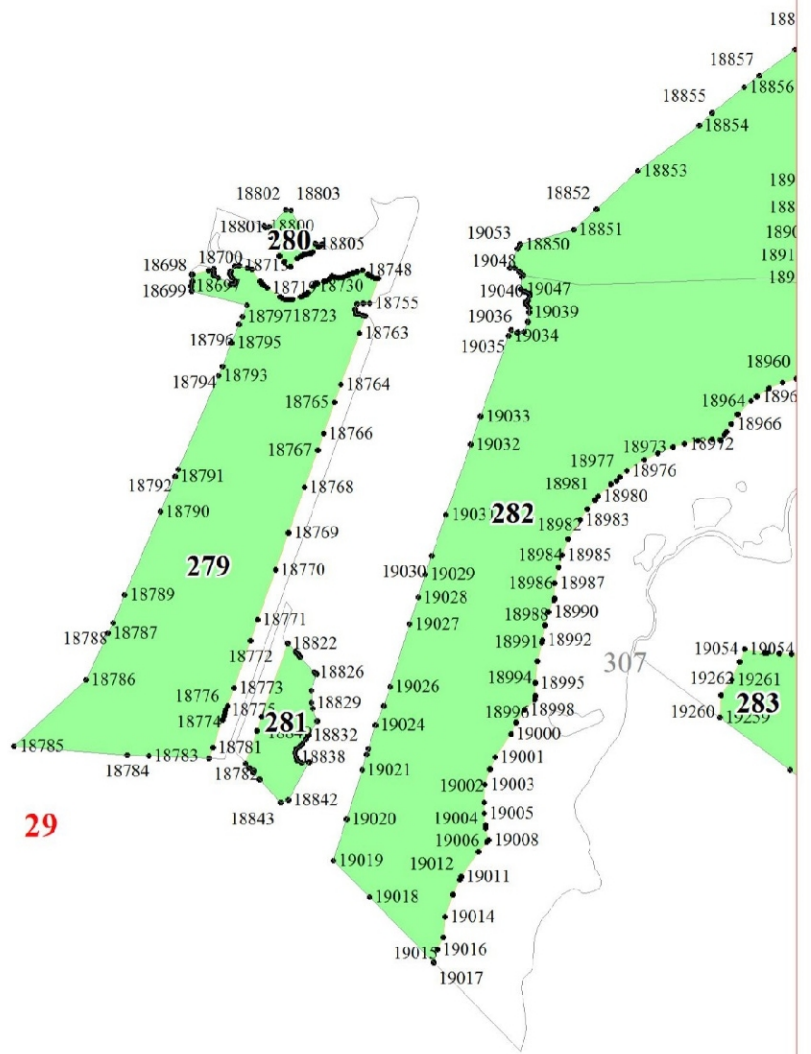
14455 14456
14453
14452
14450
14459

6754 225 228 15911 15910

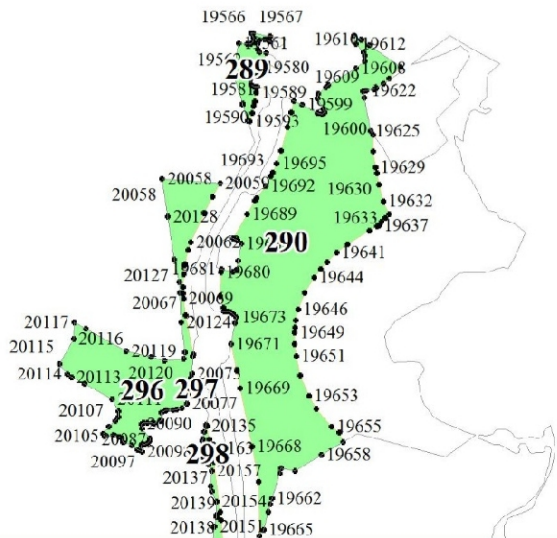
17019 1702 16994
17018 234 17000
17003 17009

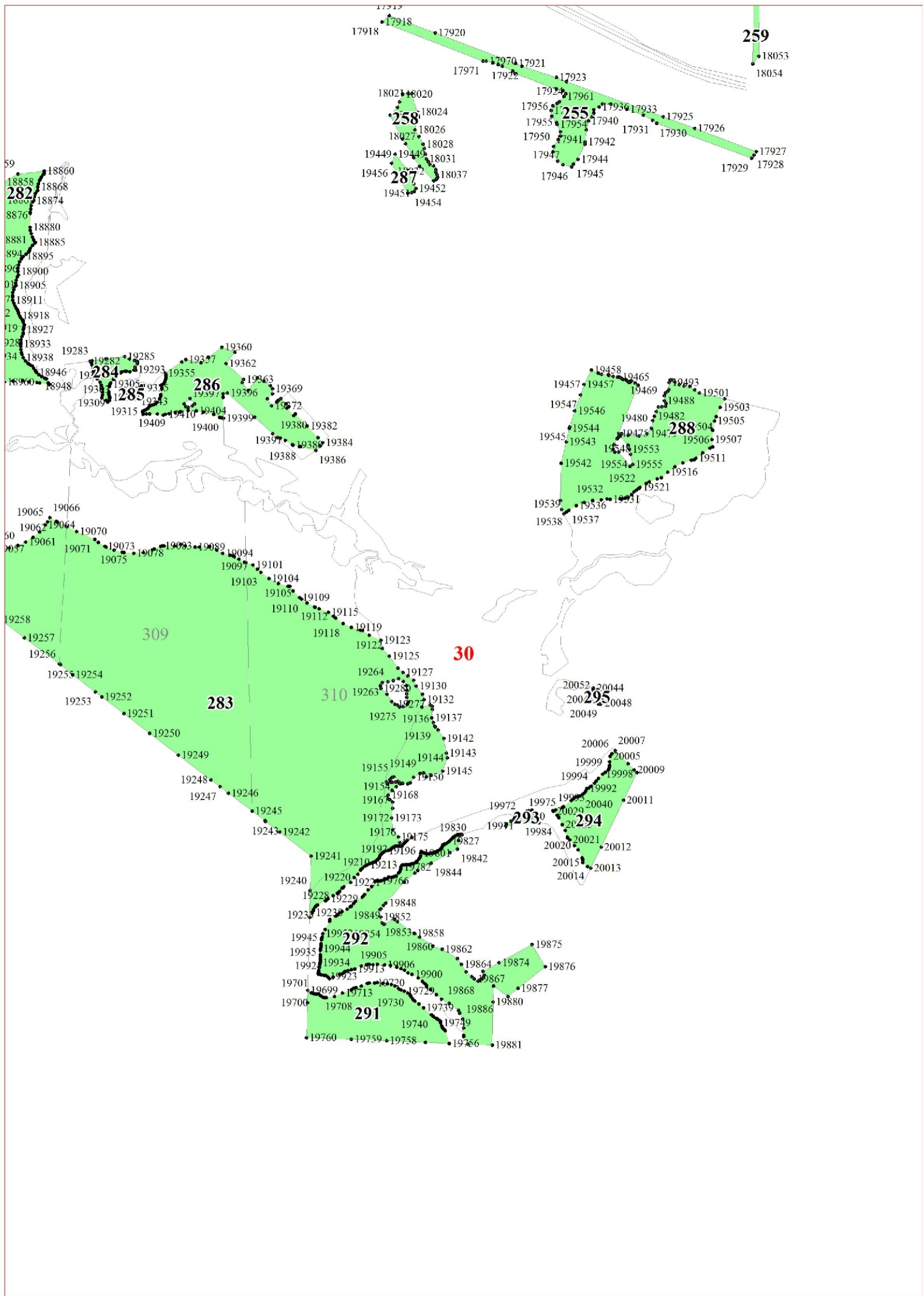


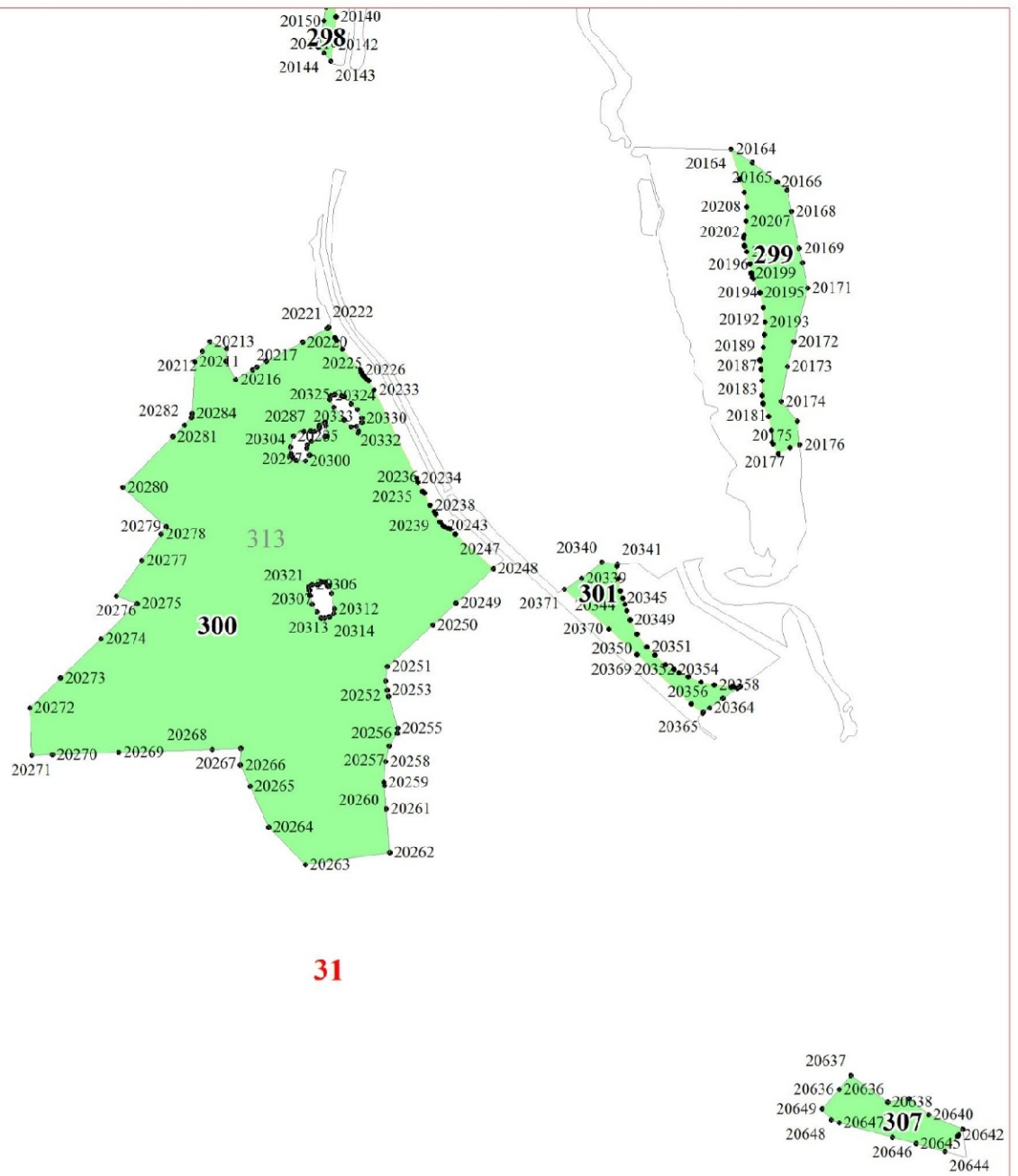
18659 18668 18670 18682
18660 277 278 18690
18677 18673 18691



29







31

