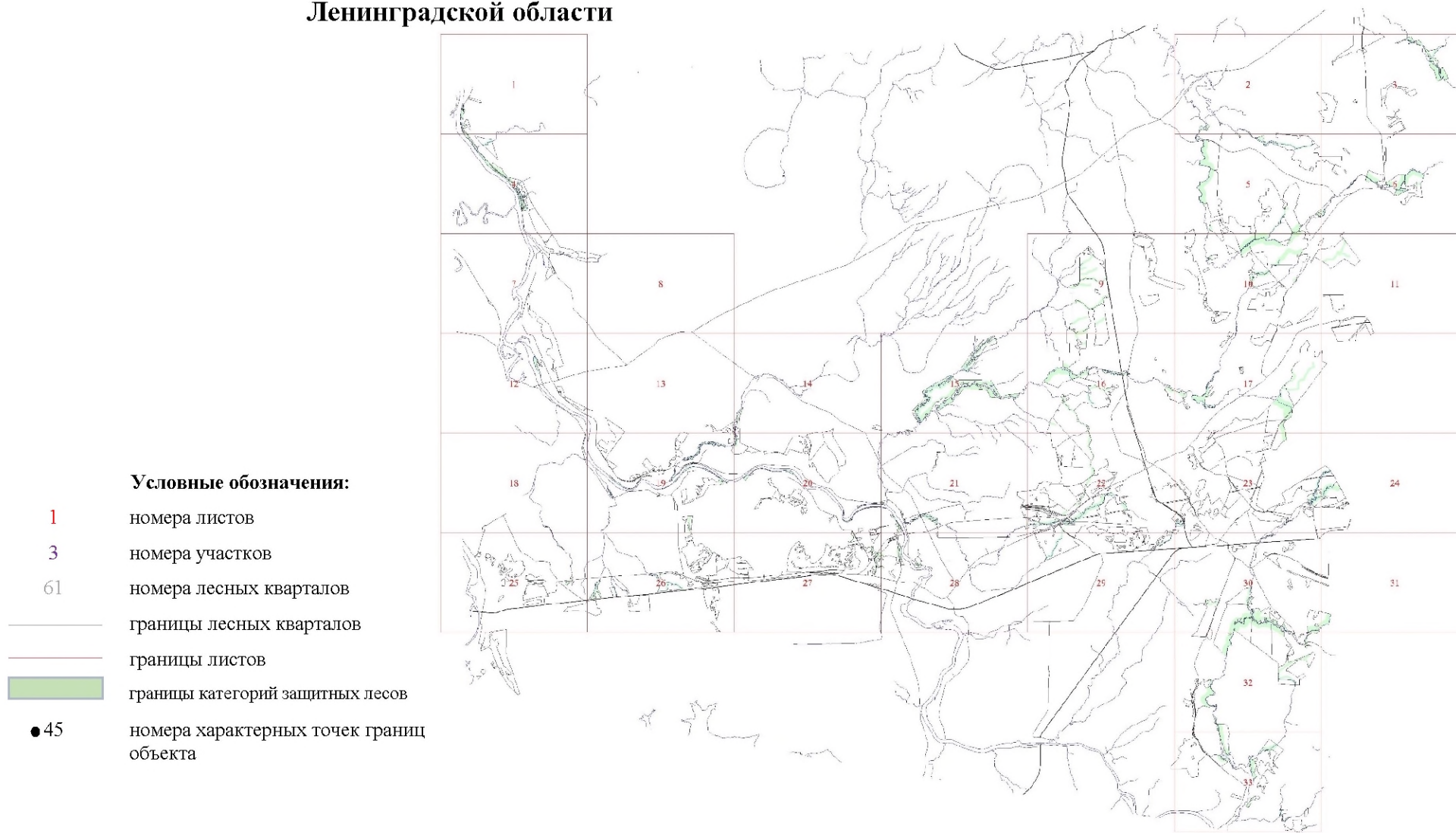


**Графическое описание местоположения границ земель,  
на которых располагаются леса, расположенные в водоохраных зонах,  
на территории Александровского участкового лесничества  
Кингисеппского лесничества  
Ленинградской области**

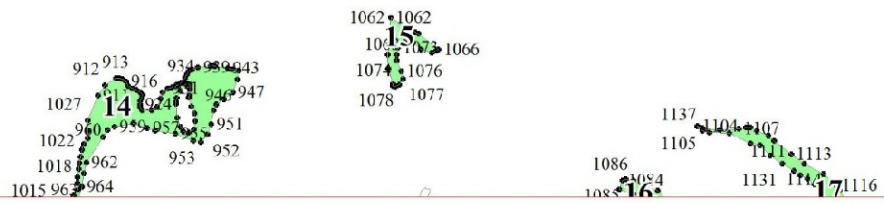
Приложение № 2 к приказу Рослесхоза  
от 27.02.2023 № 165



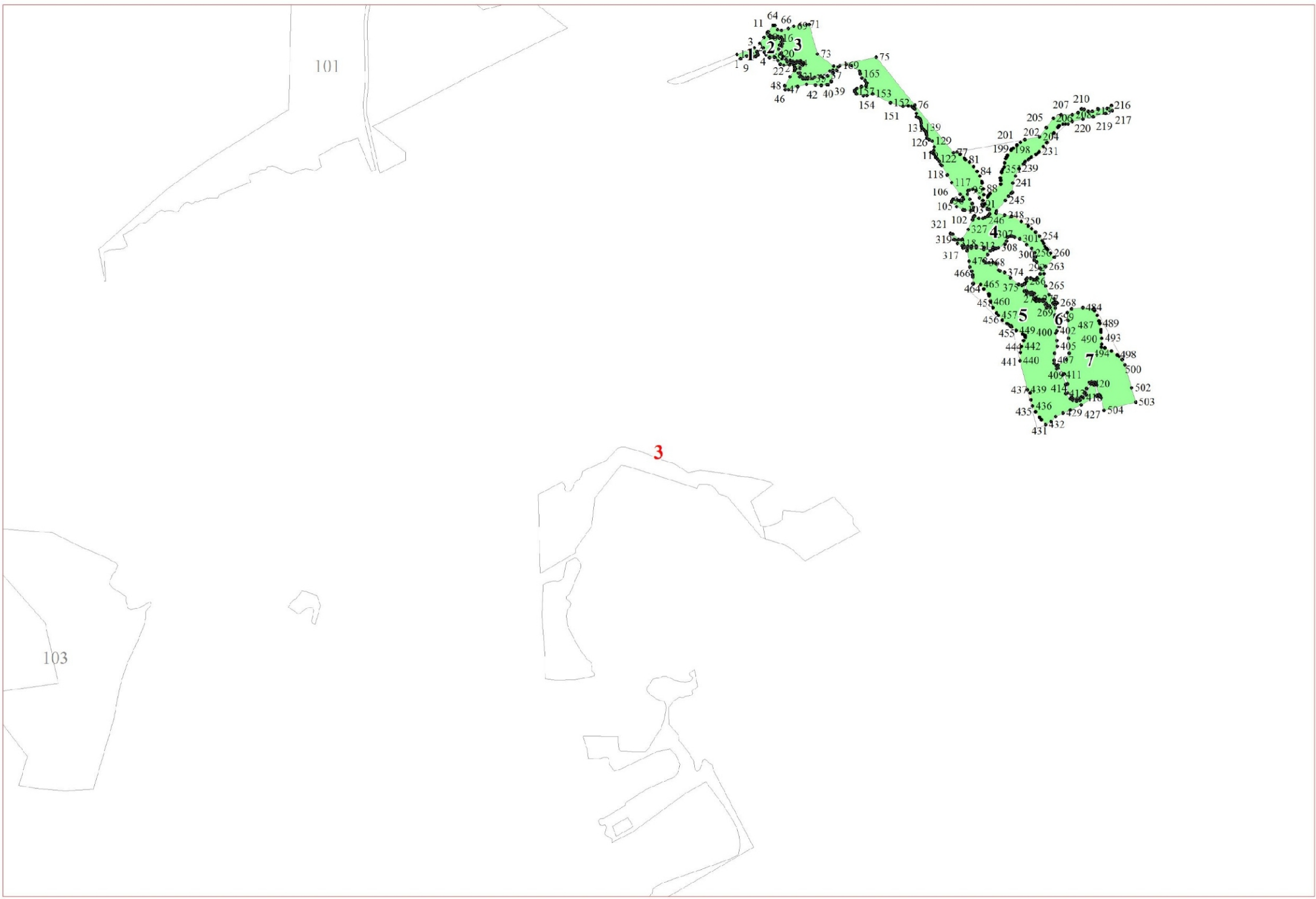
1

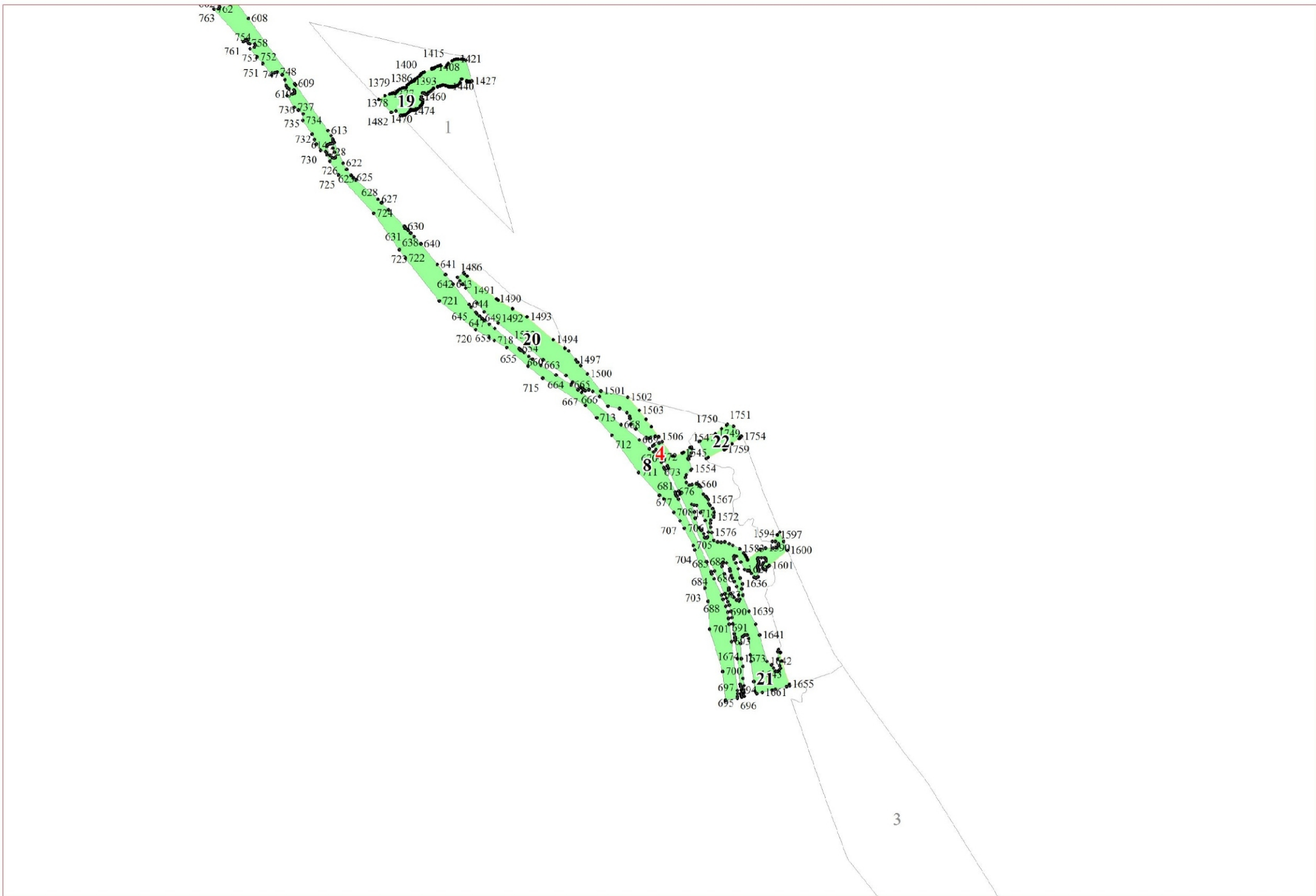
860 861  
859 858  
864 866  
802 800  
804 806 803  
808 856 813  
831 833  
855 834  
844 849  
851 837 835  
530 836  
531 542 887  
543 553 874  
559 561 876  
562 576 881  
576 584  
773 592  
603 8

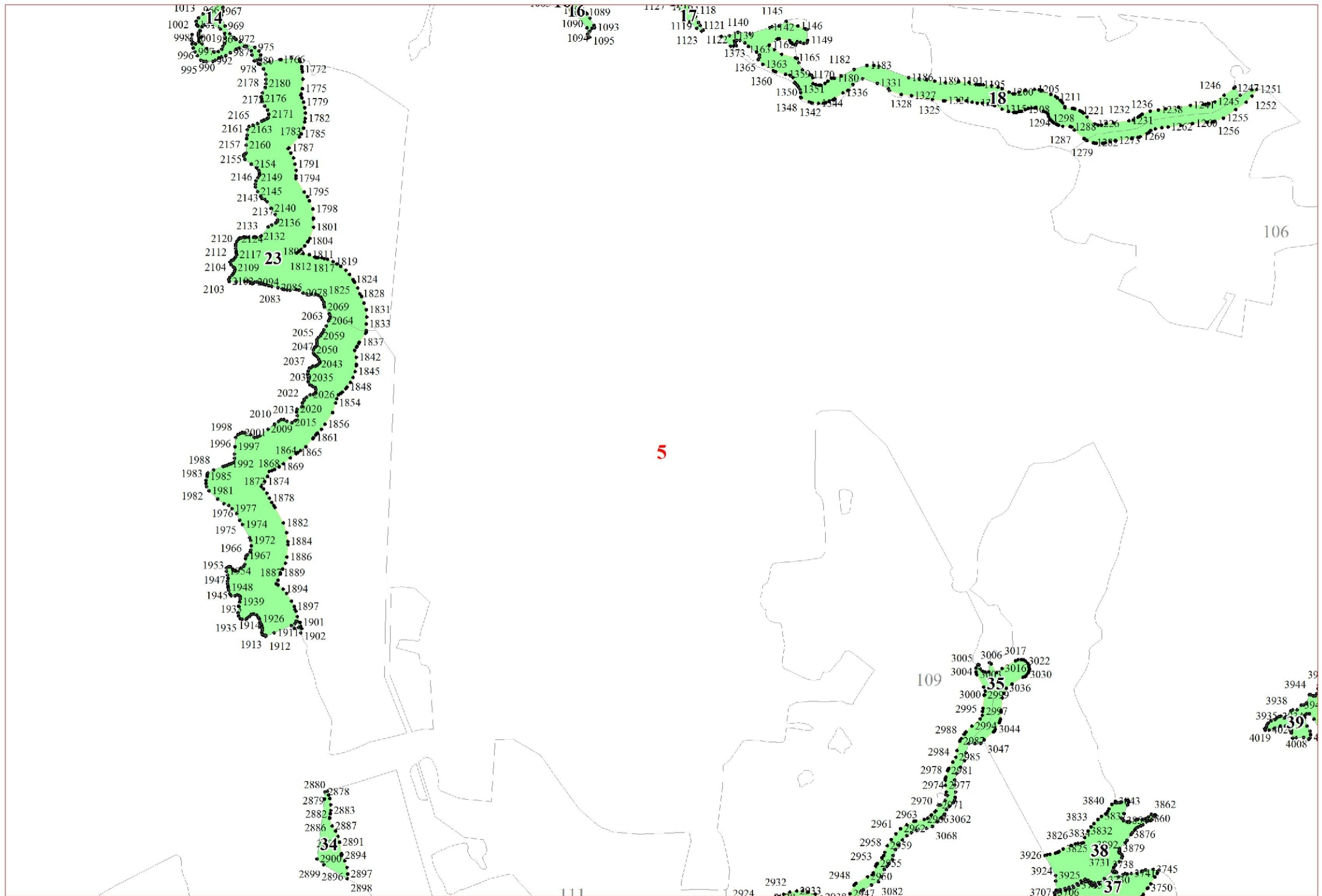
2

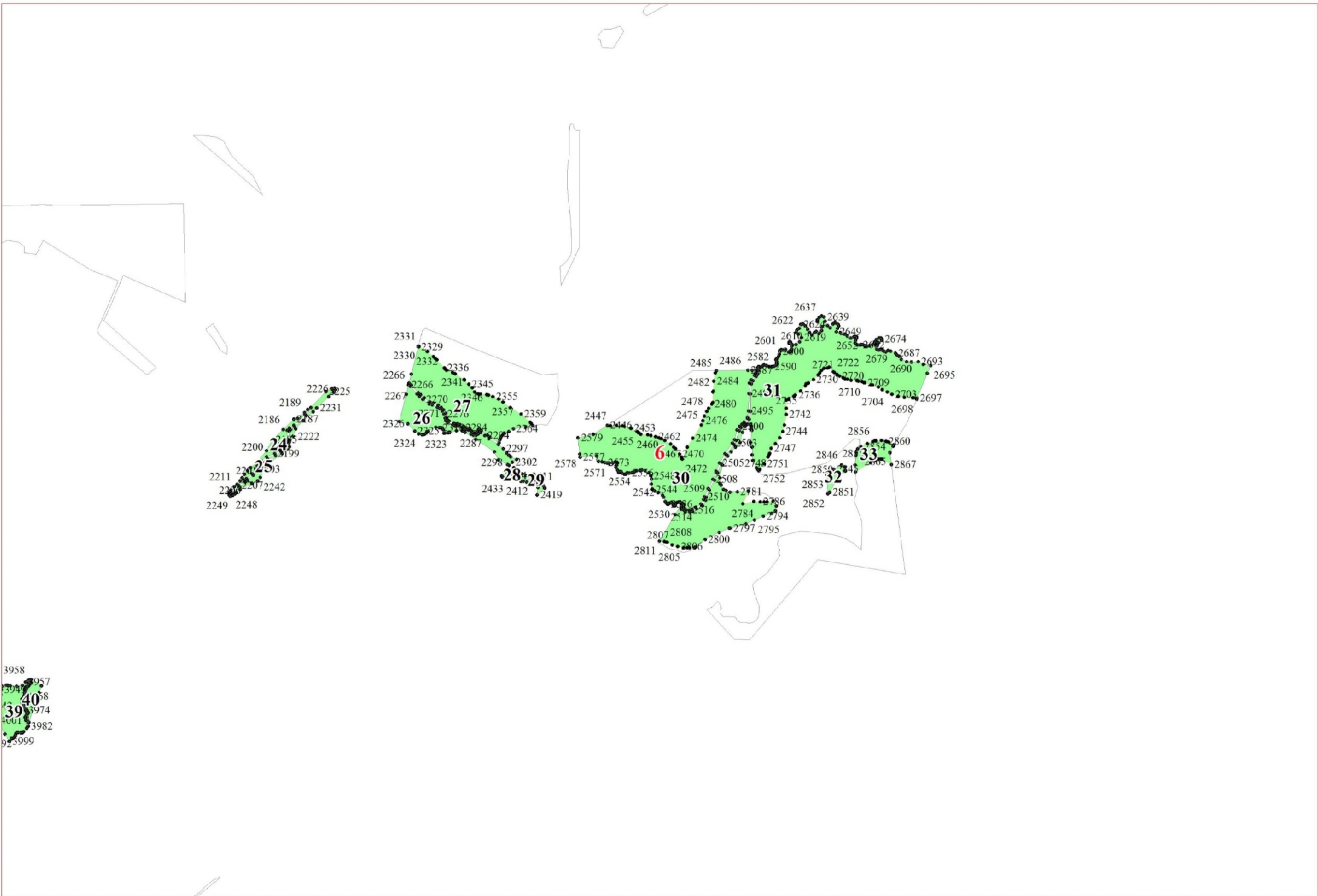


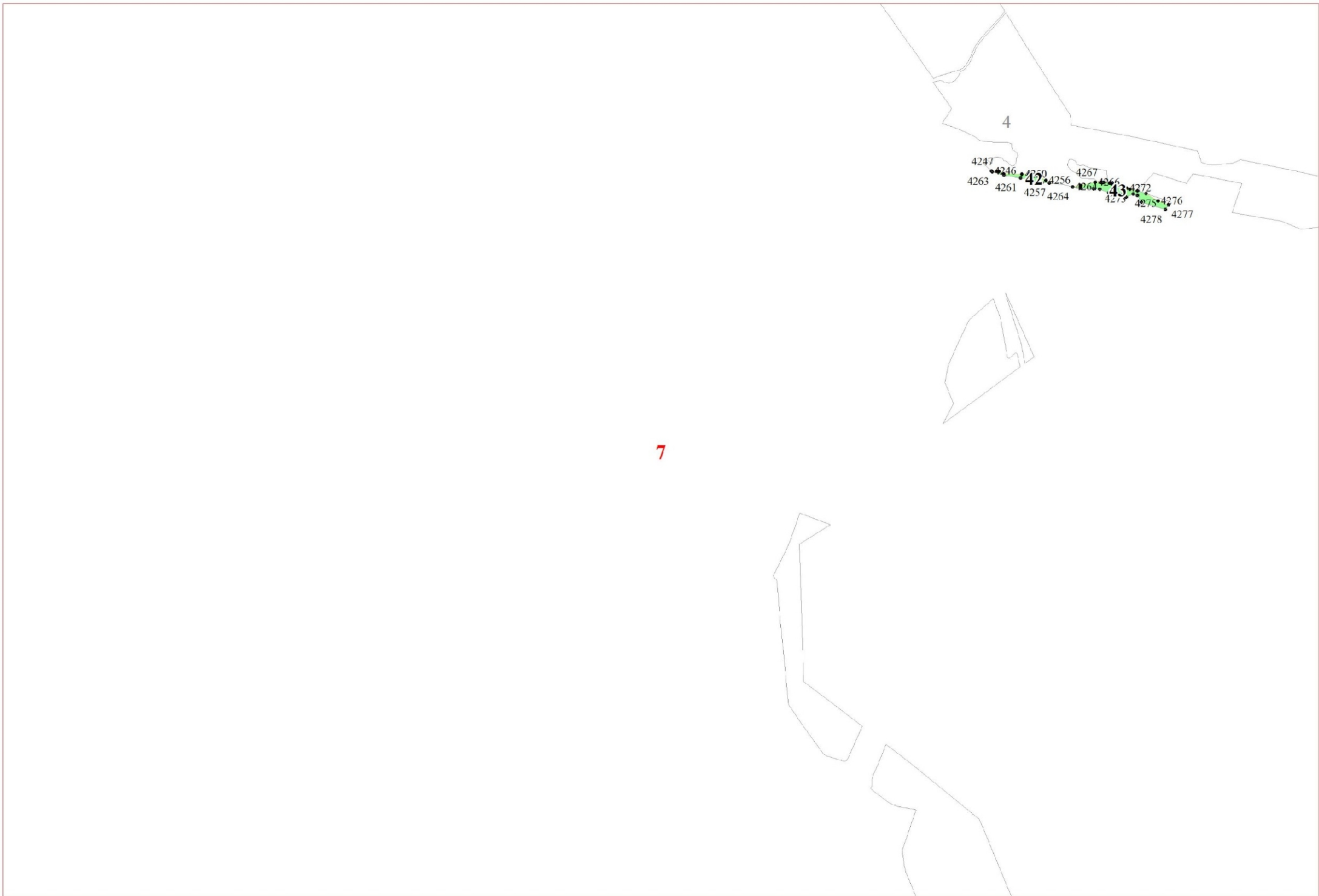
3







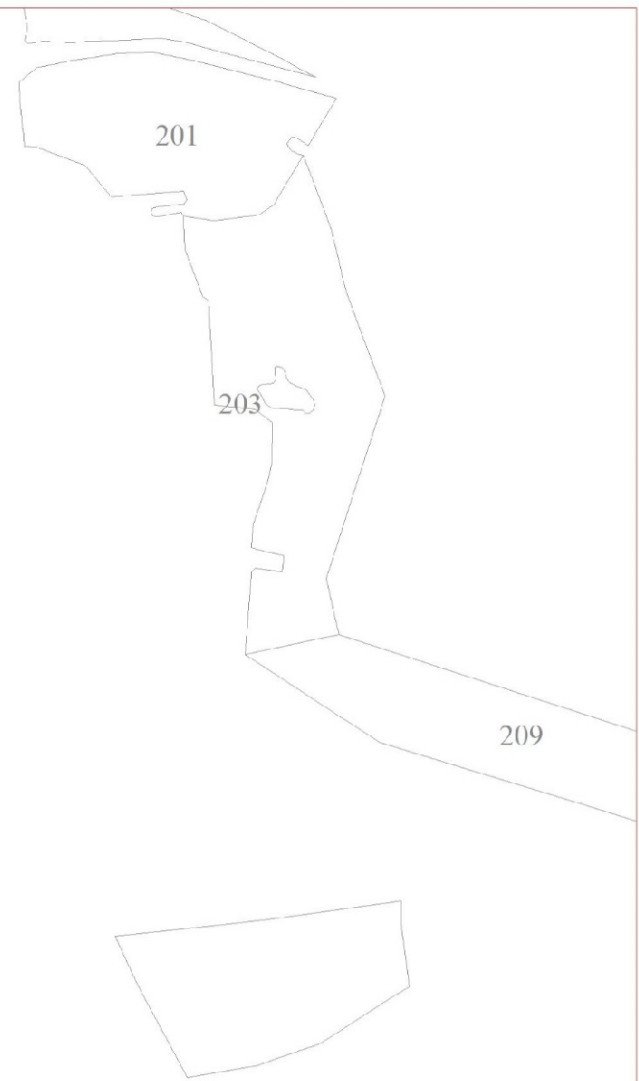
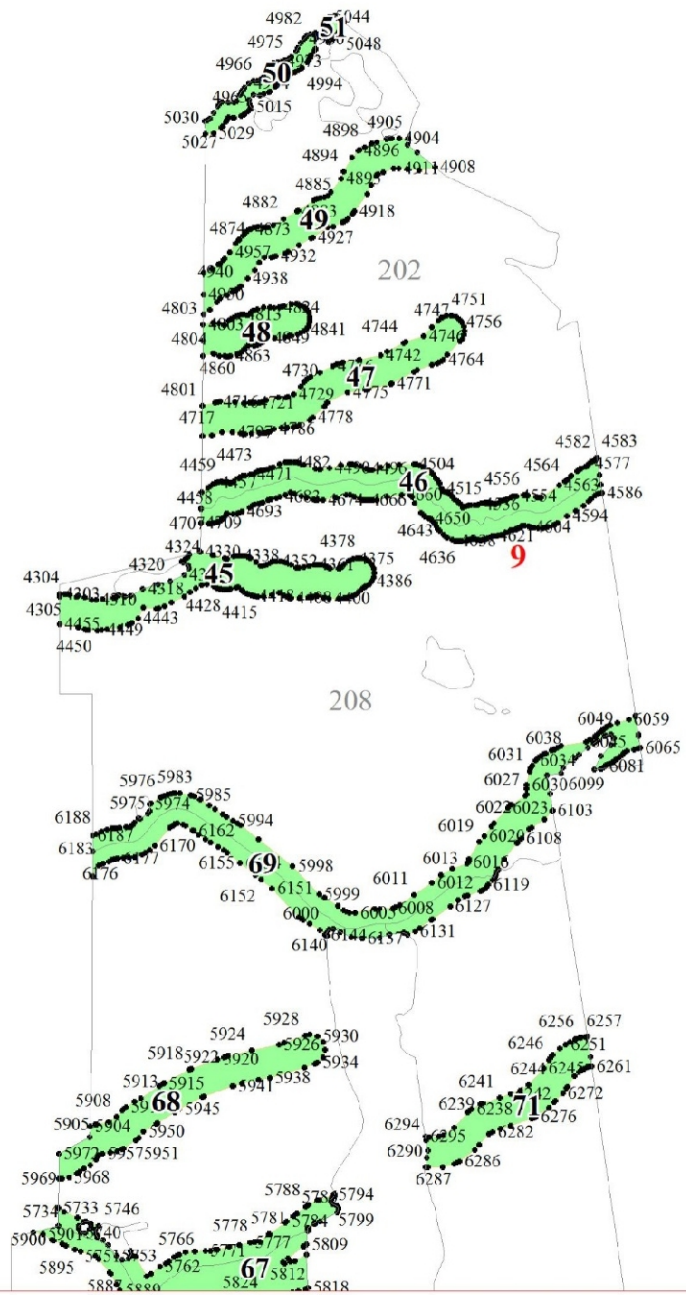


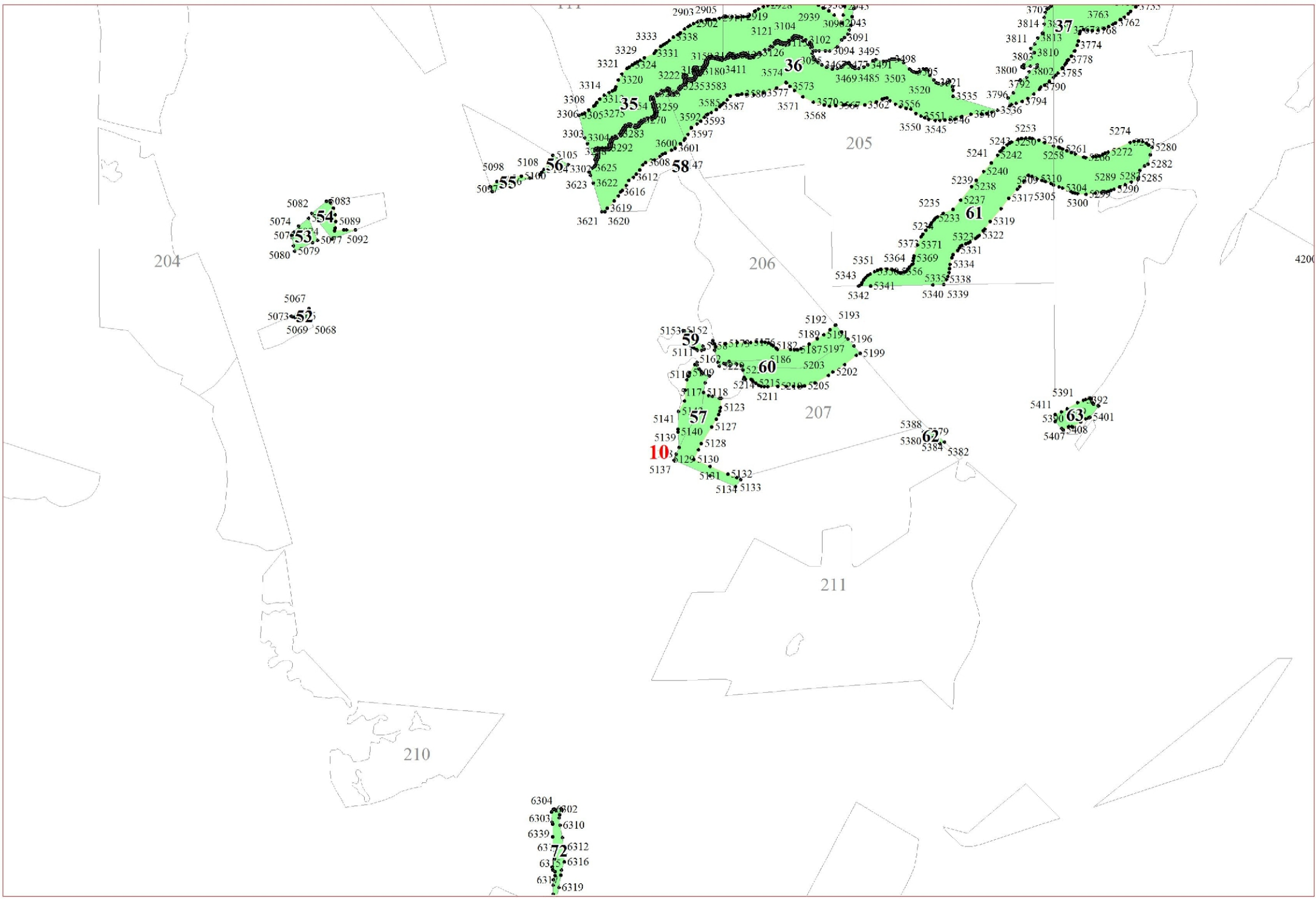


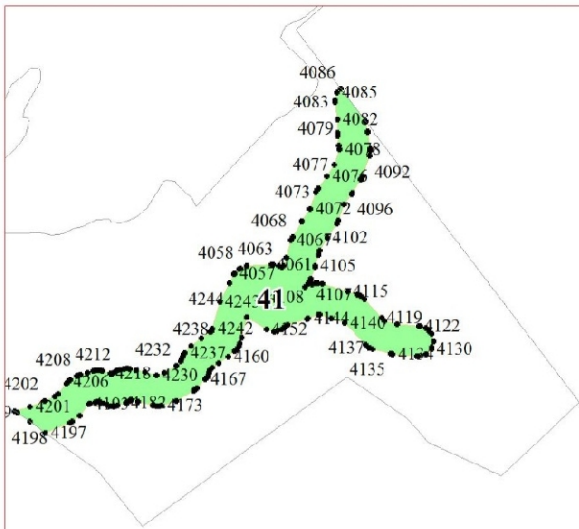


4290  
4296  
4297  
4293  
4289  
4298

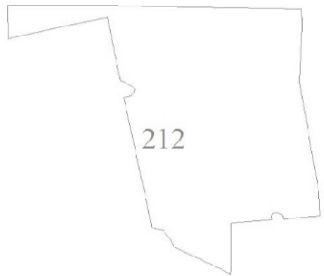
8







11



212



216

12

6343  
6341 6342  
6340 6363  
6355  
6463 6365  
6462 6373  
6450 6380  
6438 6451 6388  
6391 6393  
6435 6394 6396  
639  
6416  
6403 6403  
6407 6404  
6406 6405

5

12

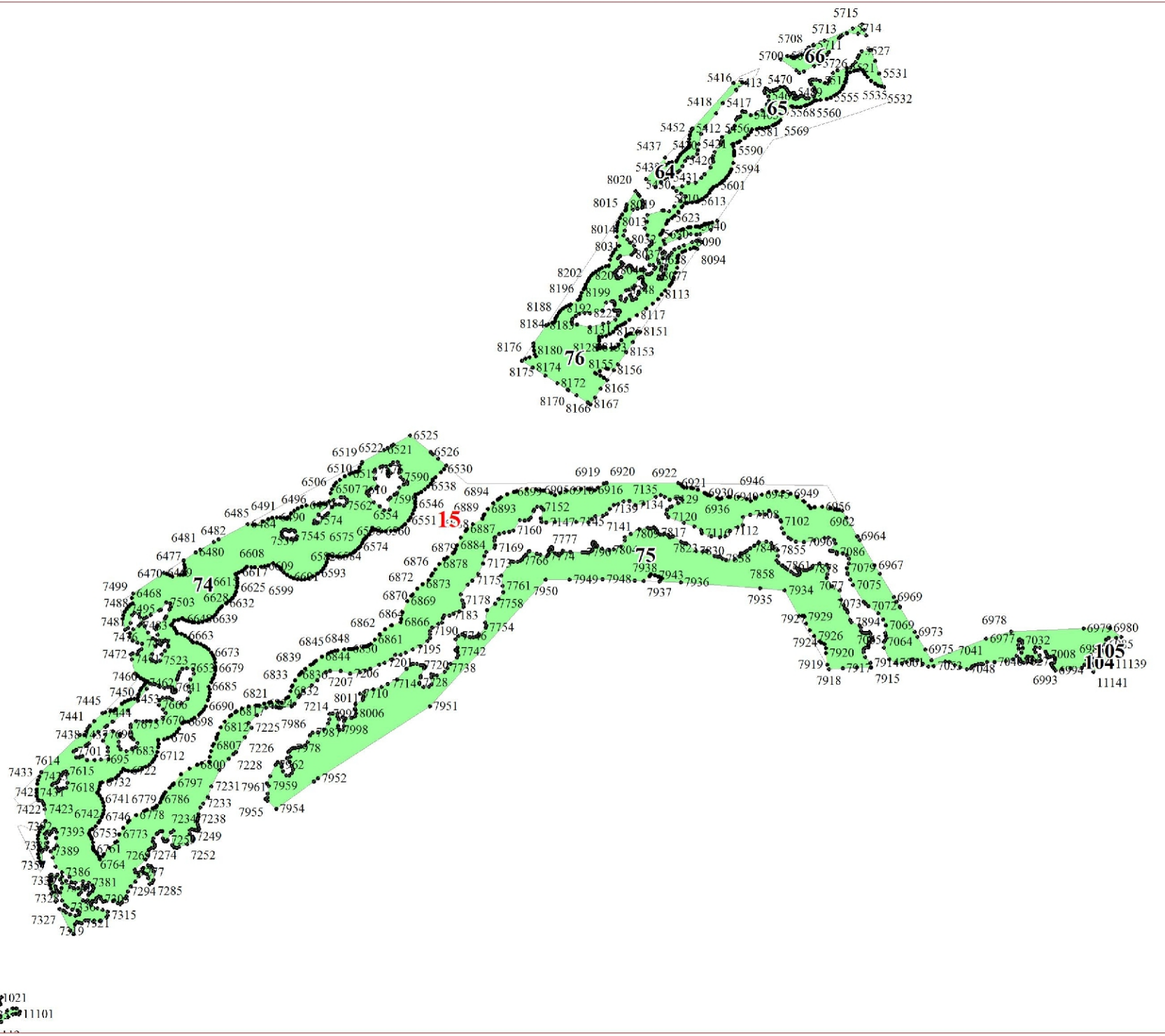
13

10675  
10695  
10699  
10687  
1067  
1060  
1069  
10681

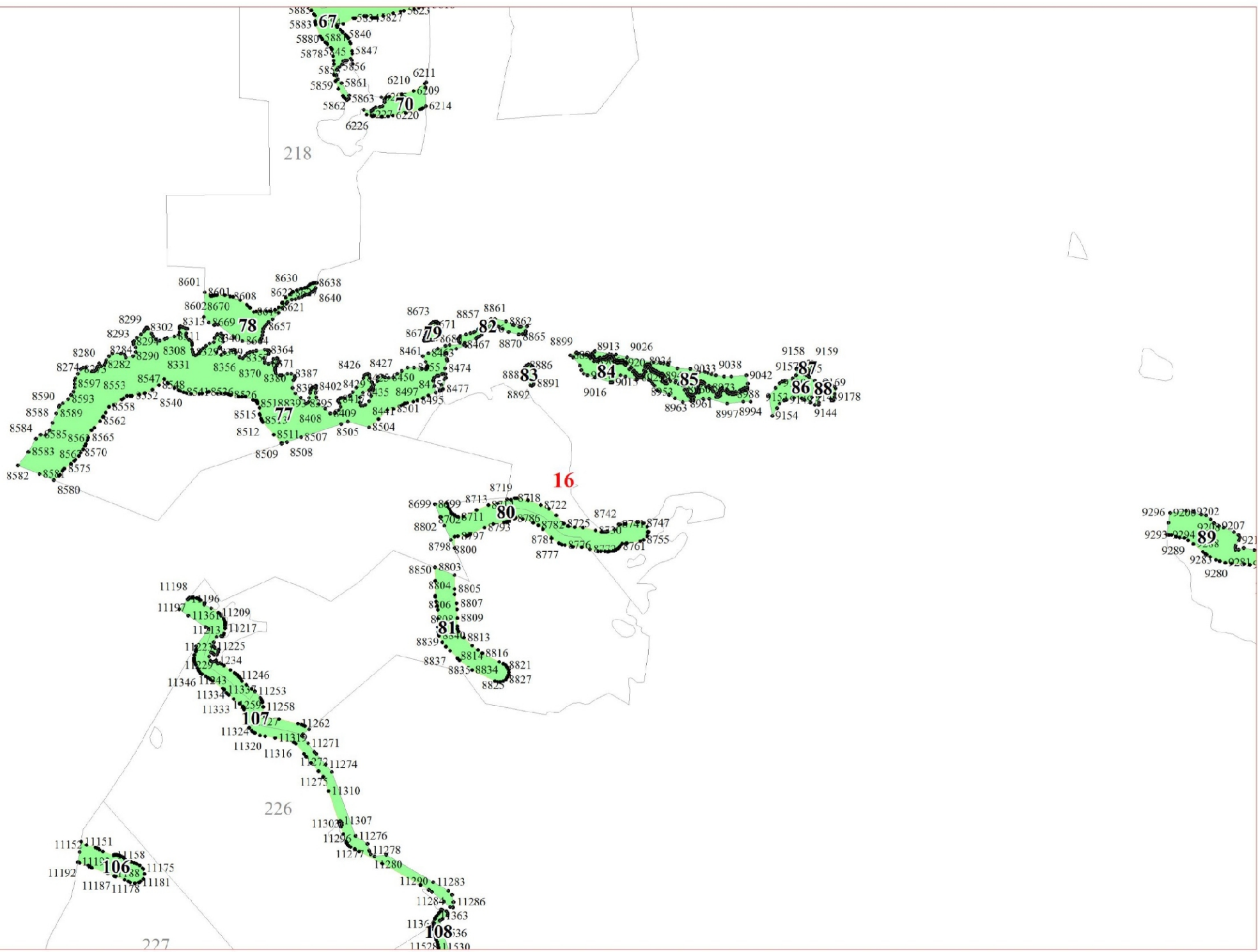
14

10886 10885  
10884 10883  
10891 10892  
10962 10896  
10901 10906  
10100 0911  
10916 10915  
10916 10919  
10675 10923  
606 10929  
5 10936  
4563 10940  
99 570  
5 10575  
5 10579  
10583

15









18



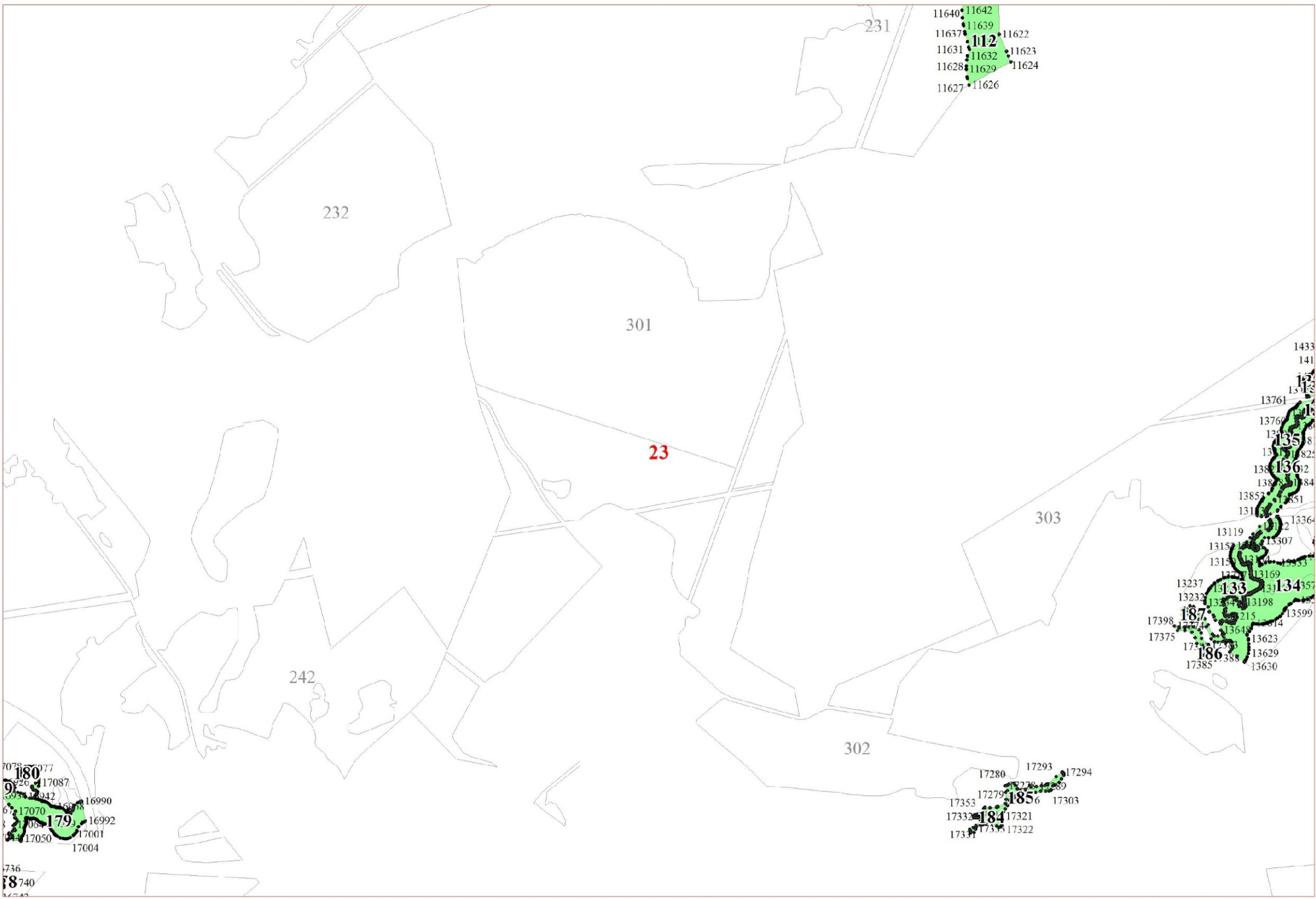
14530  
14592  
14529  
139  
14585  
14584  
14533  
14534



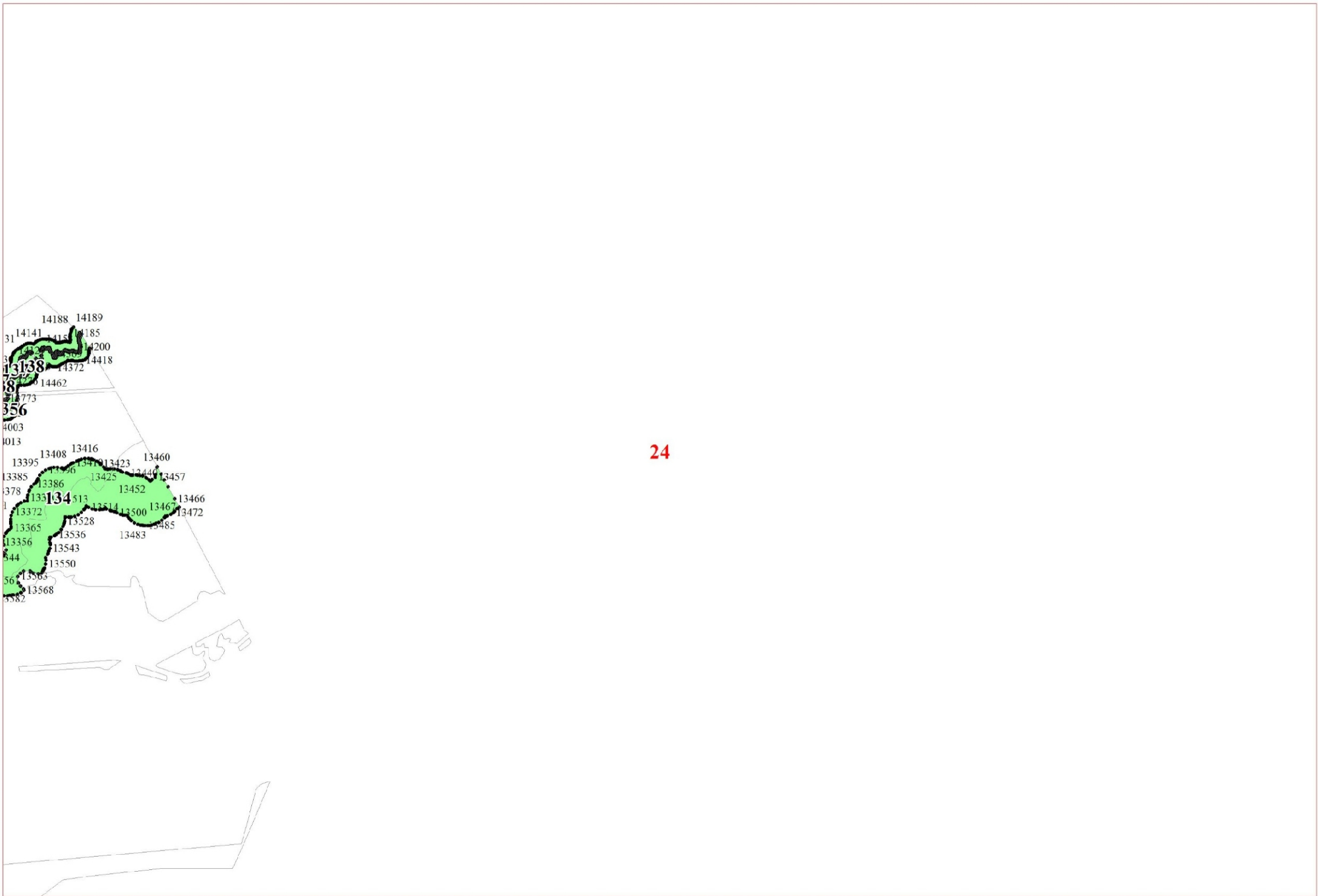




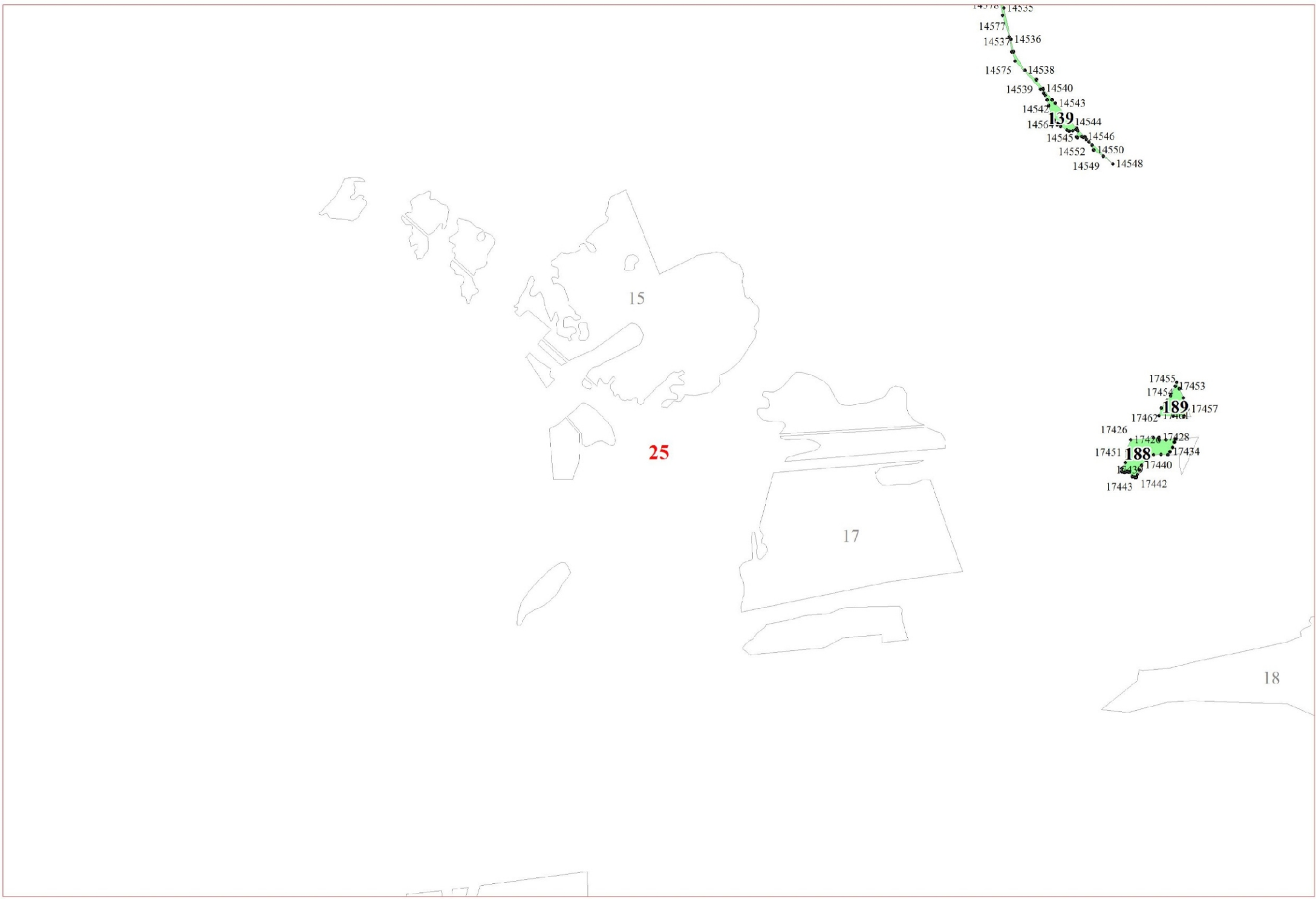


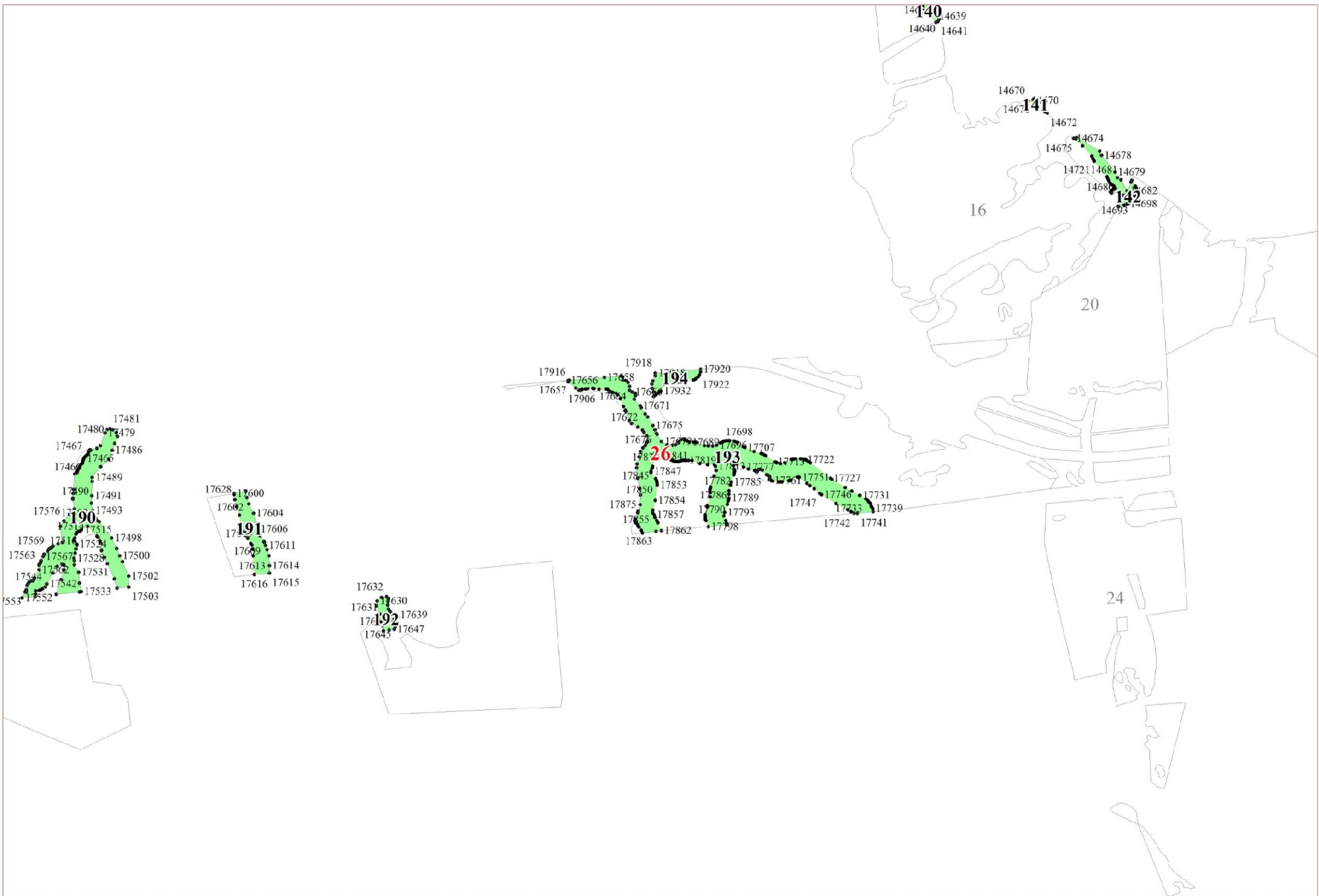




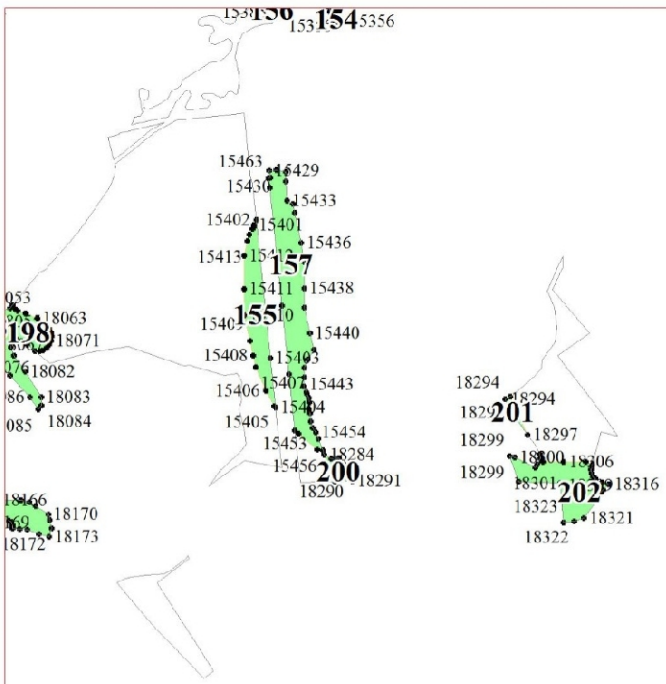


24

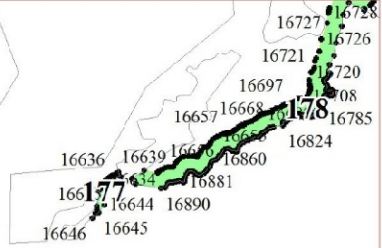
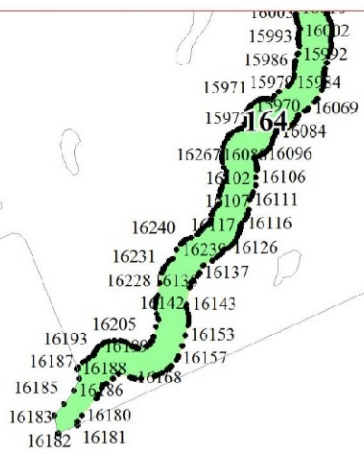


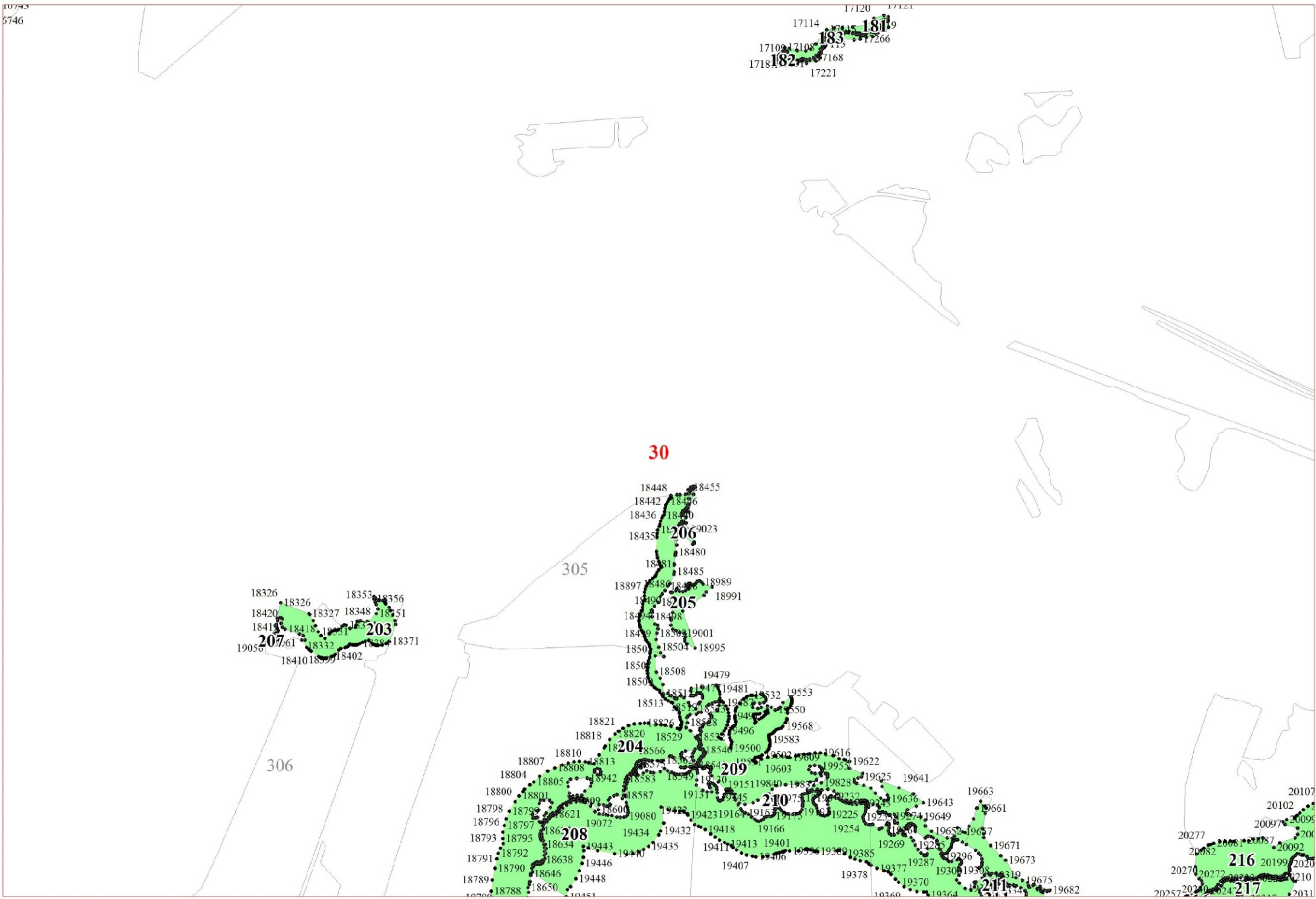






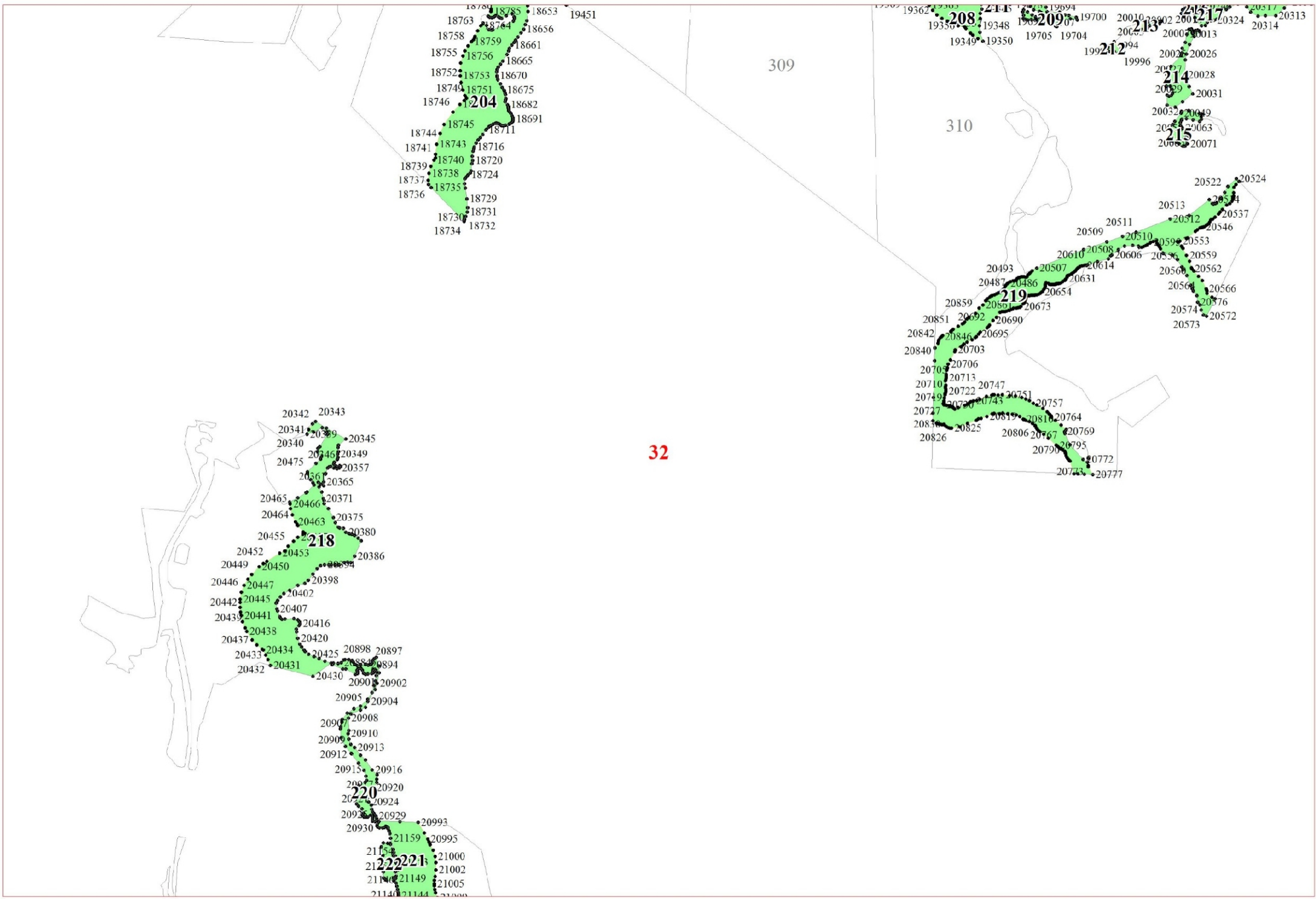
28











32

