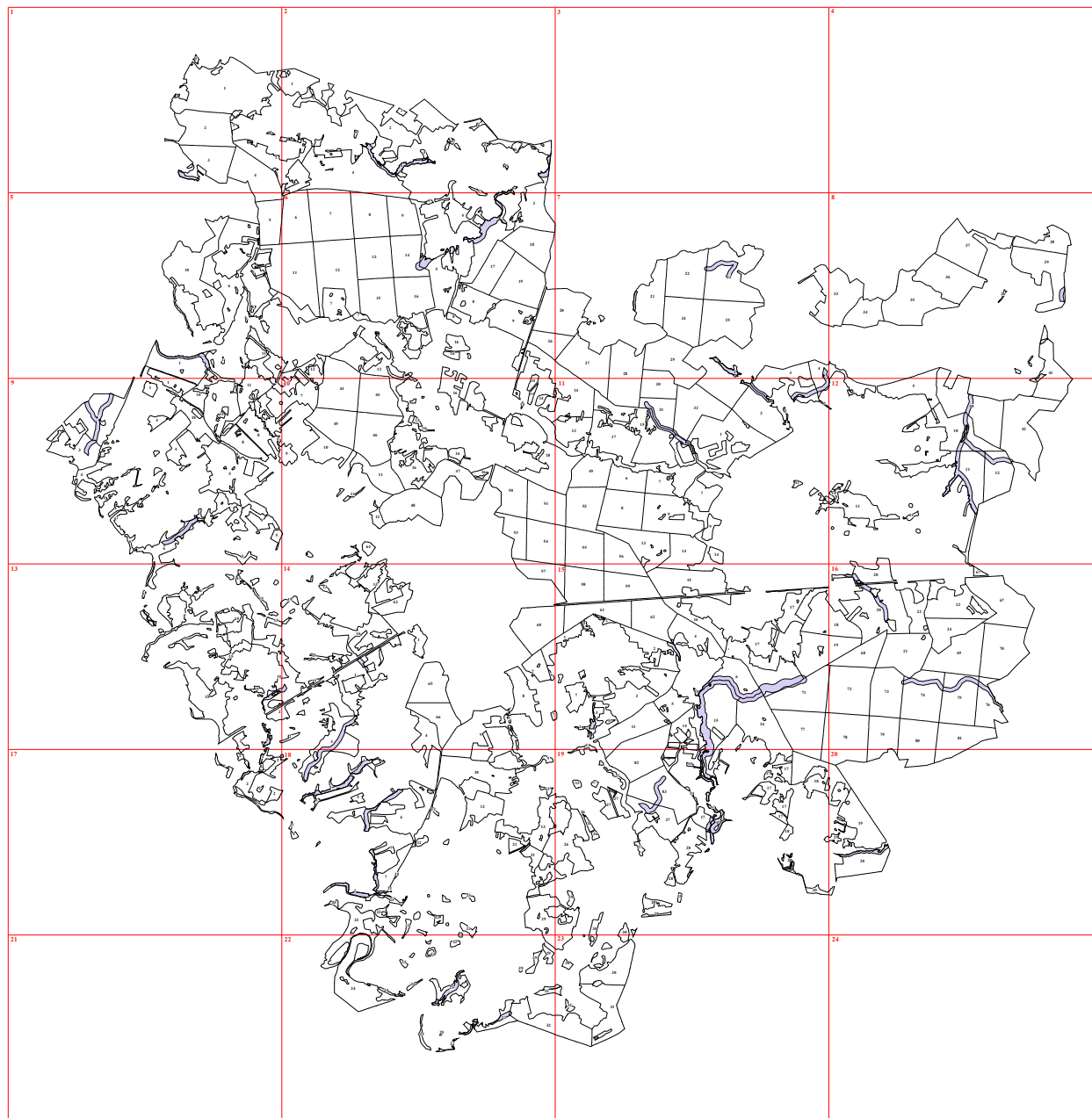
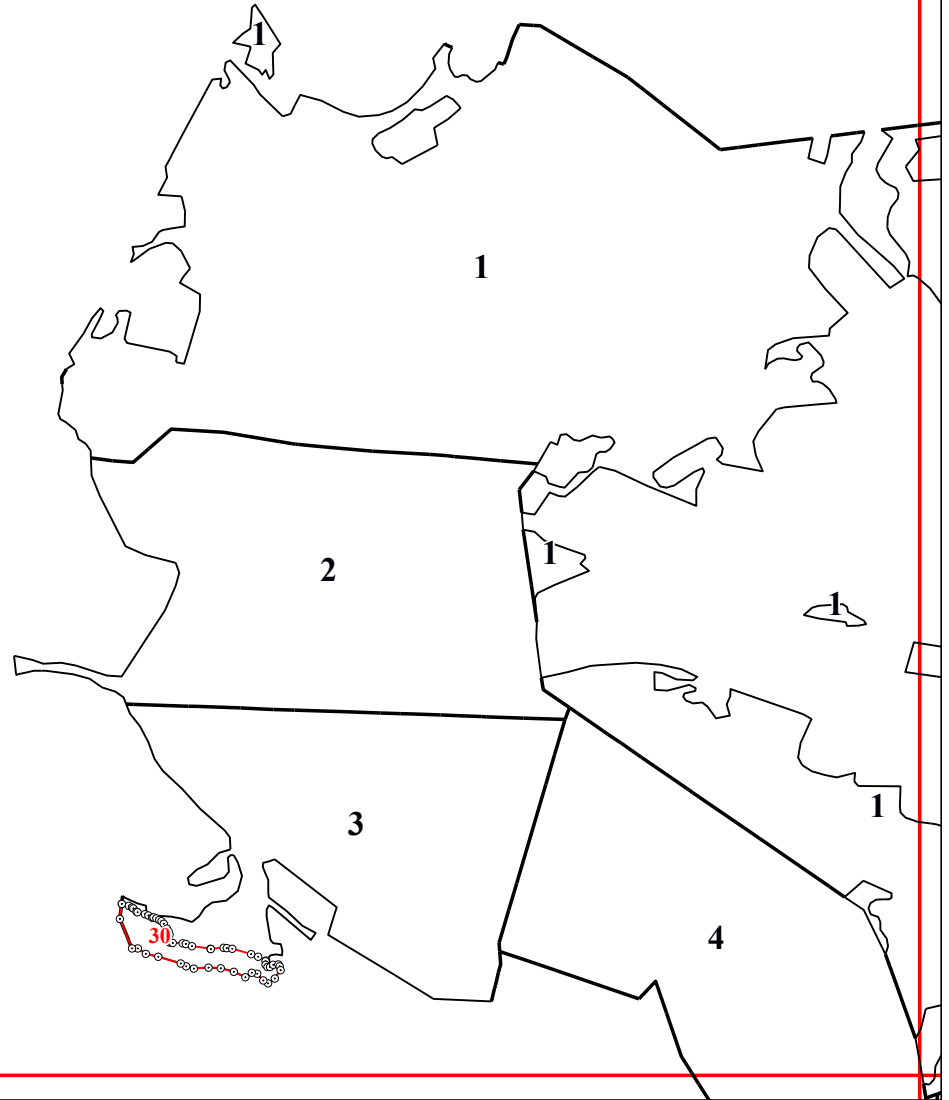
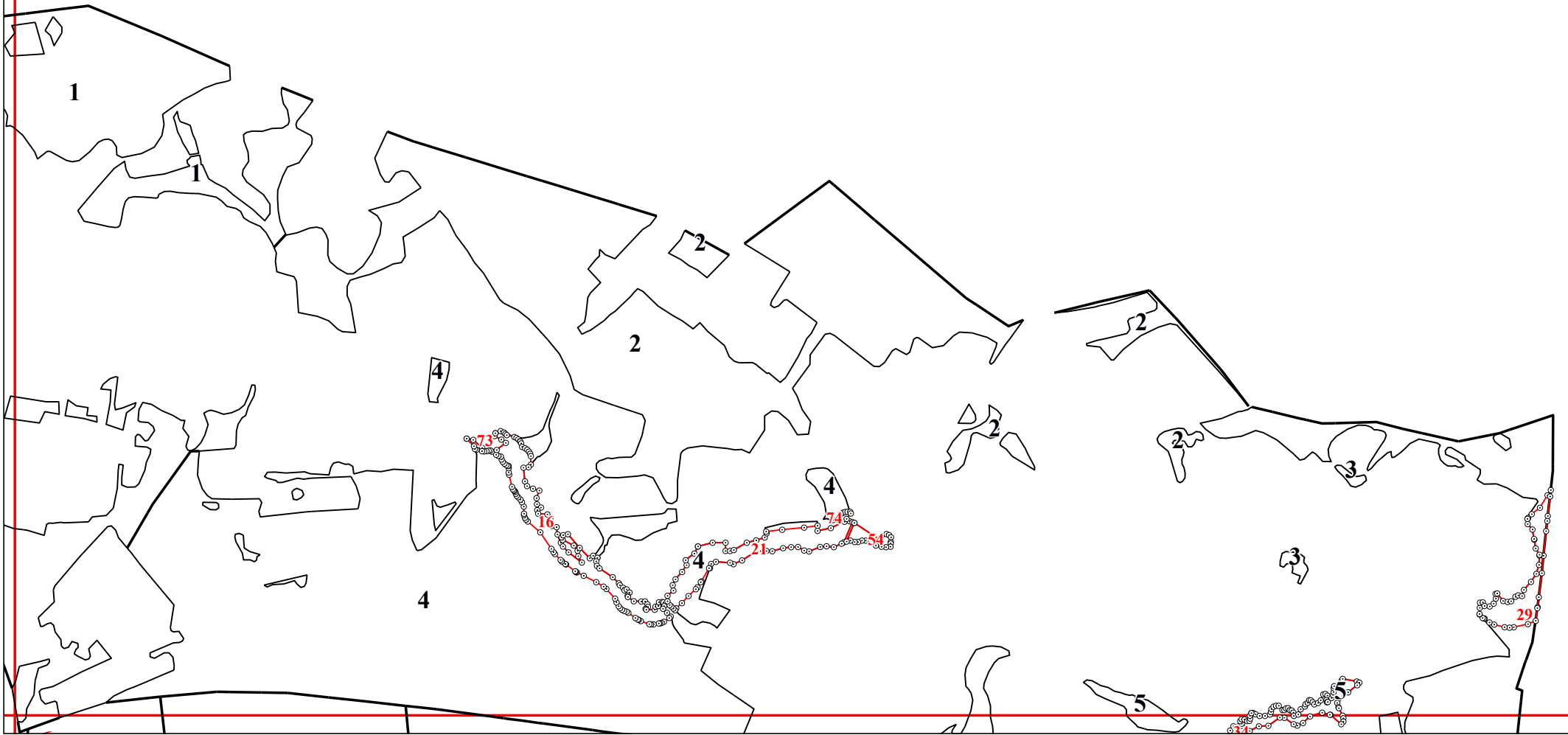


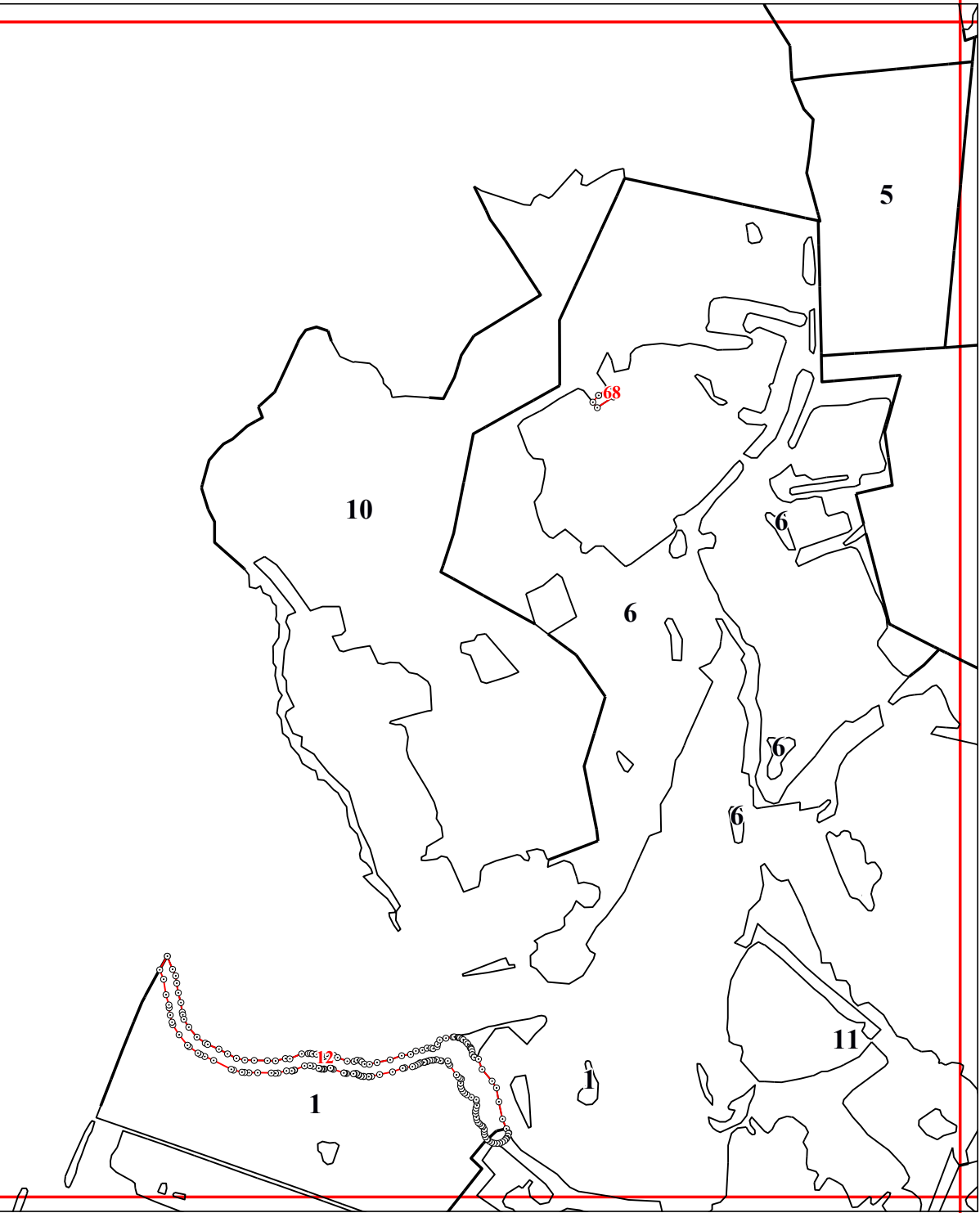
**Графическое описание местоположения границ земель, на которых располагаются
леса, расположенные в водоохранных зонах, на территории Медынского участкового
лесничества Медынского лесничества Калужской области**

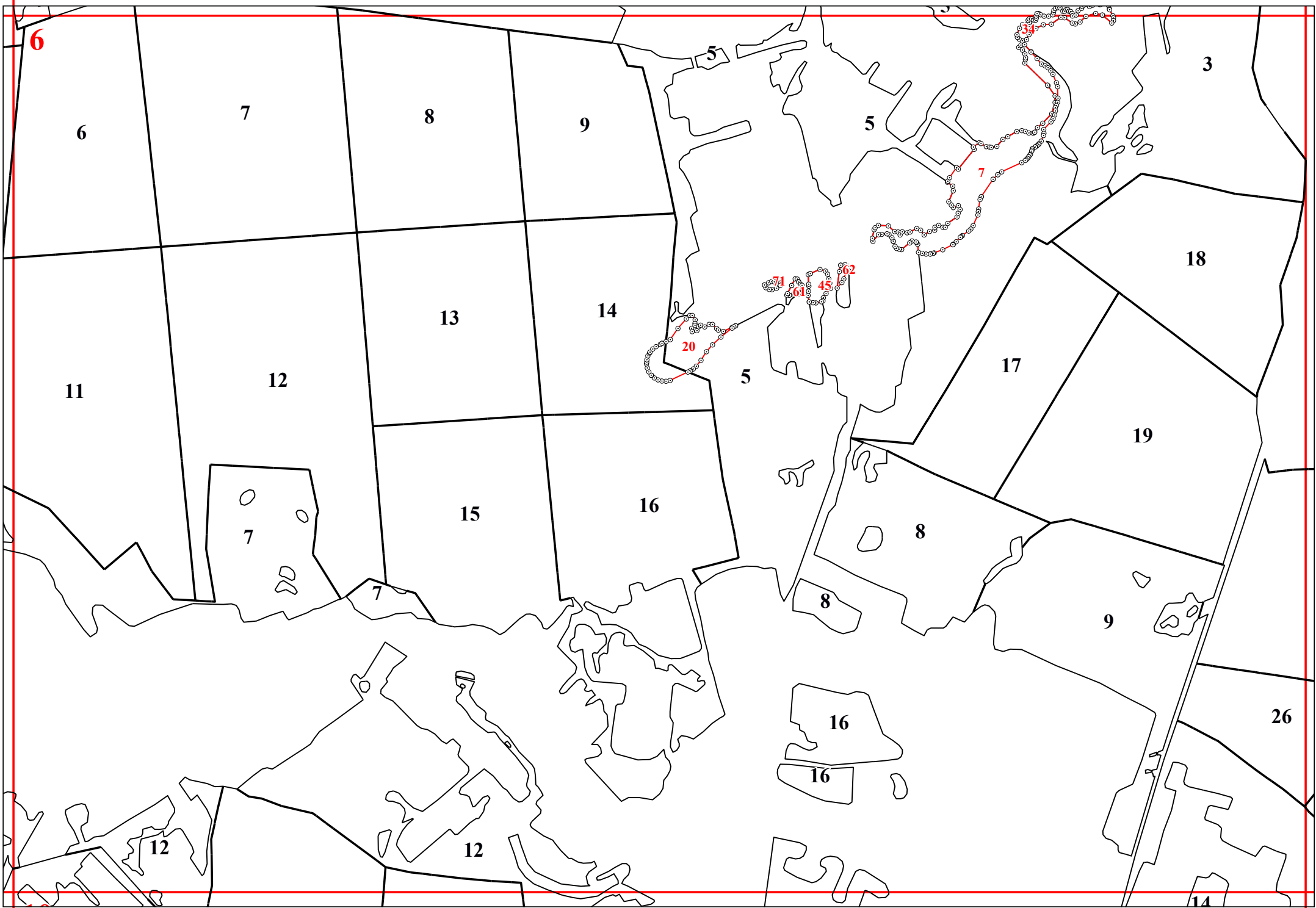
Приложение № 14 к приказу Рослесхоза
от 27.02.2023 № 191

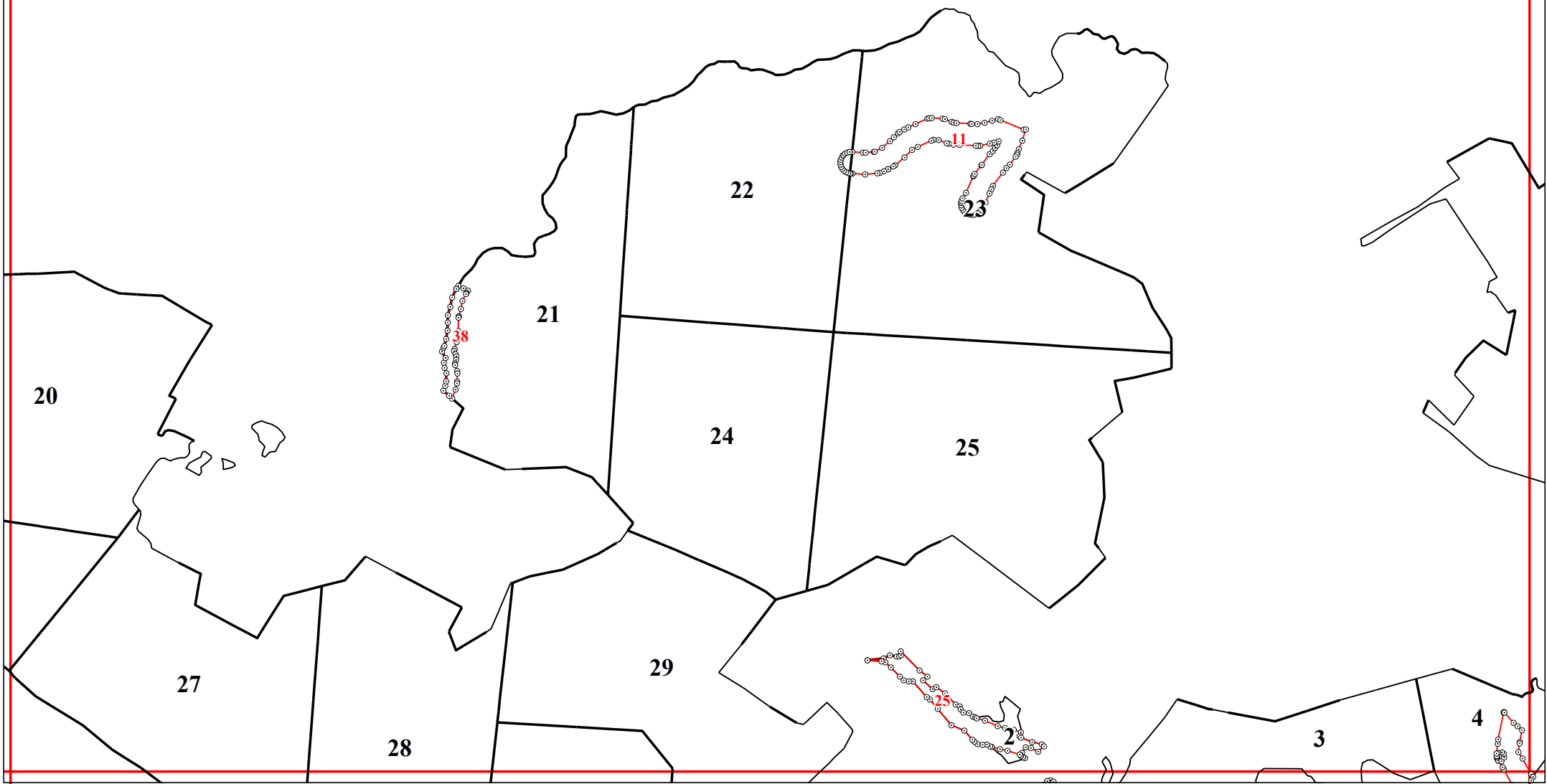


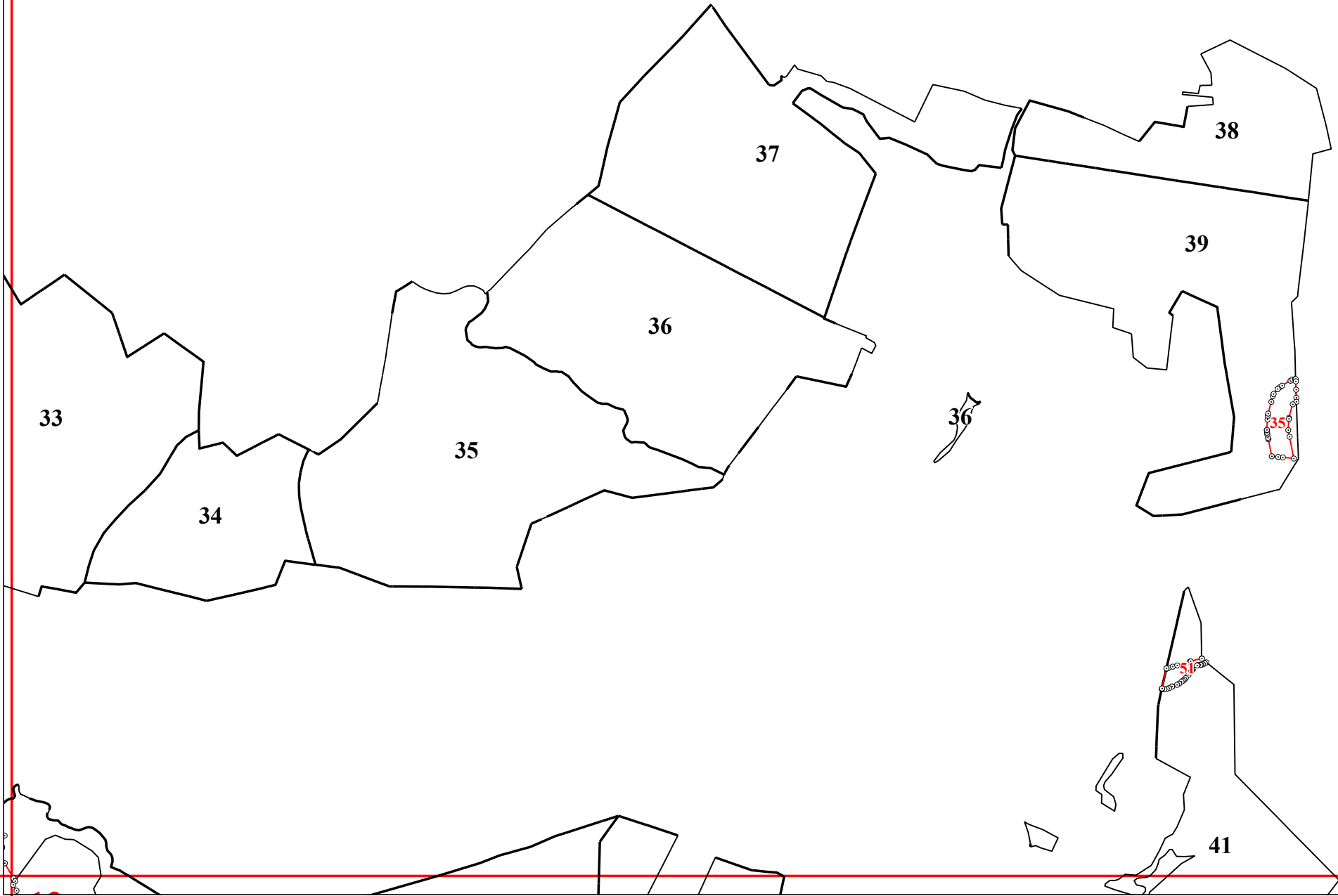


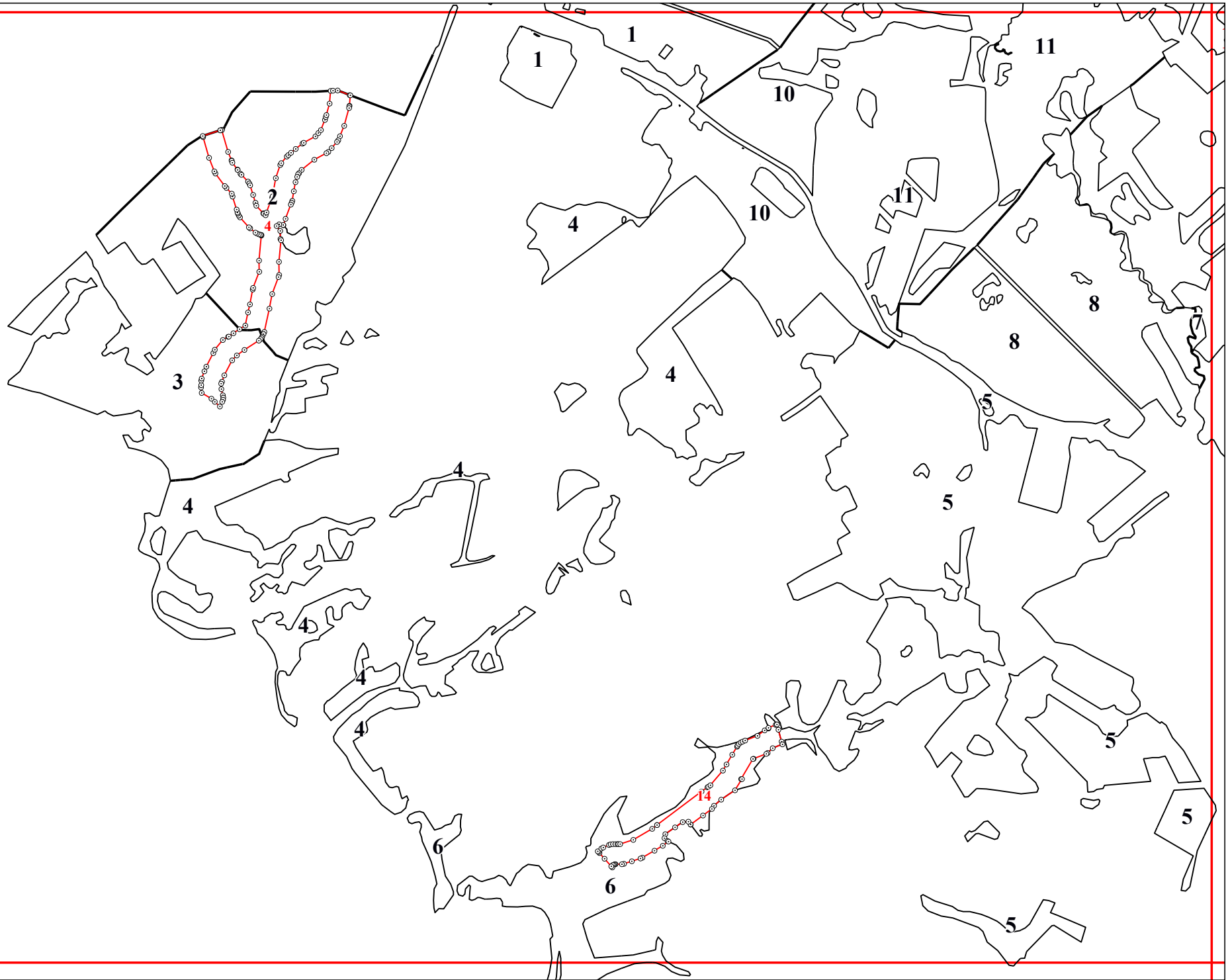


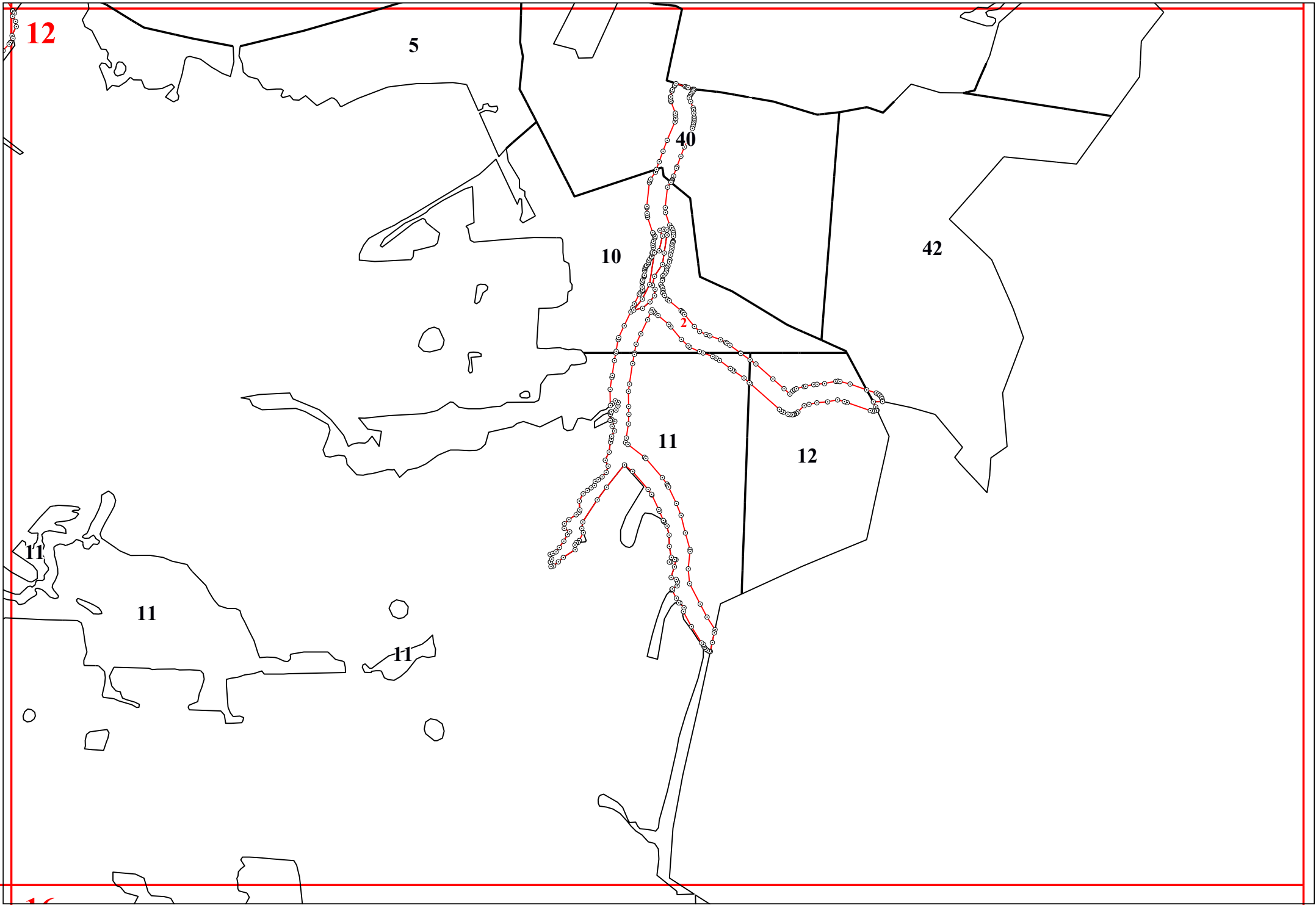


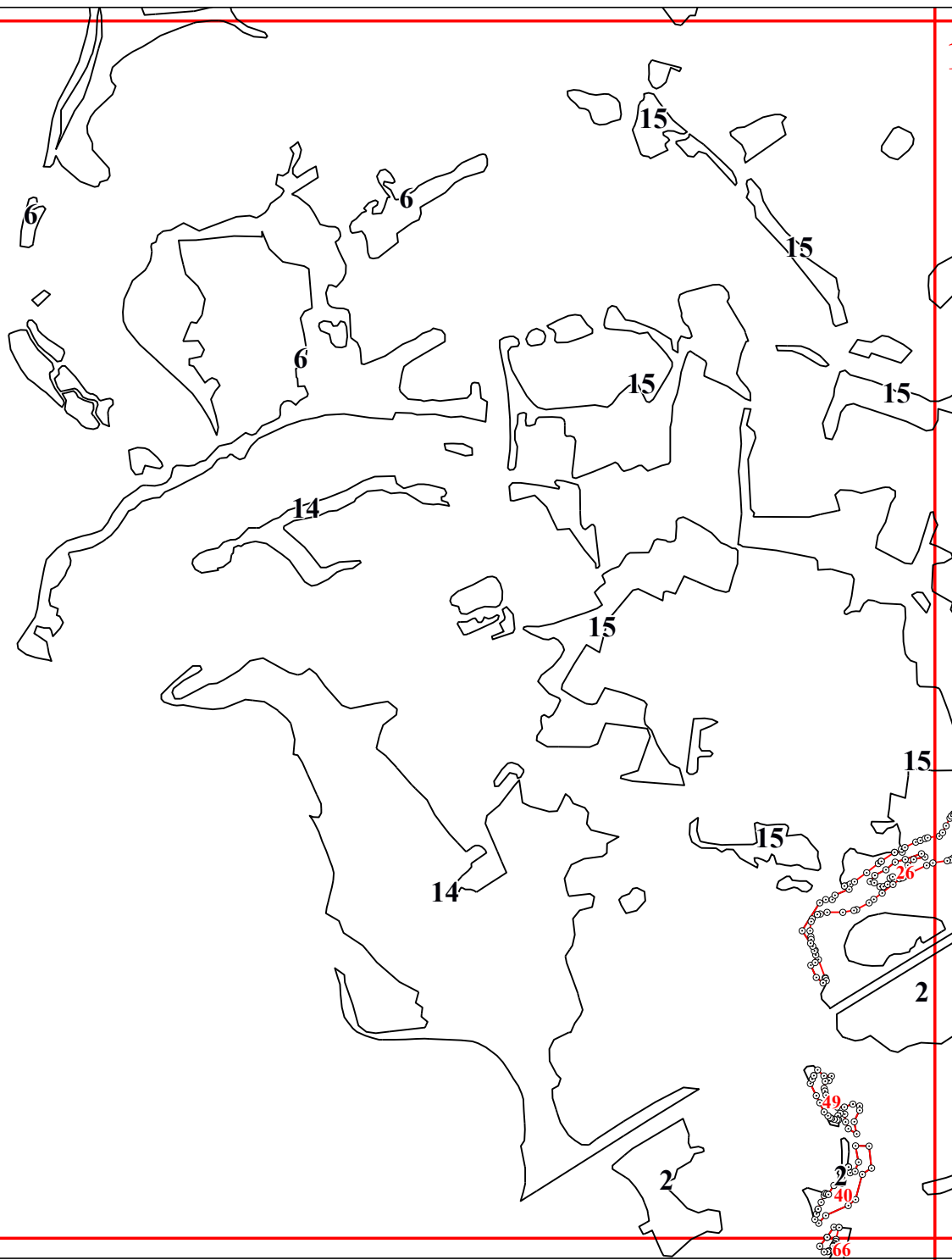


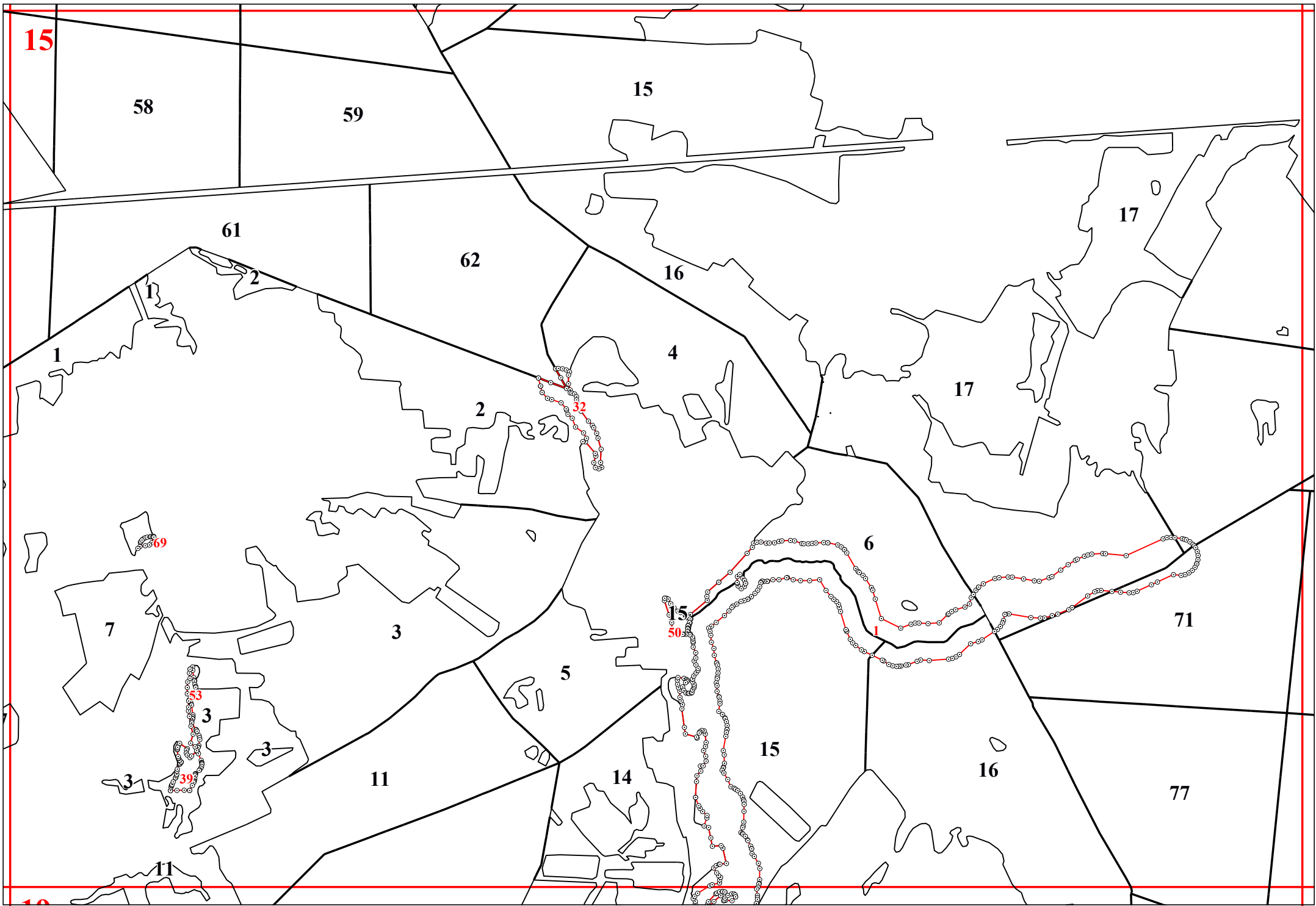




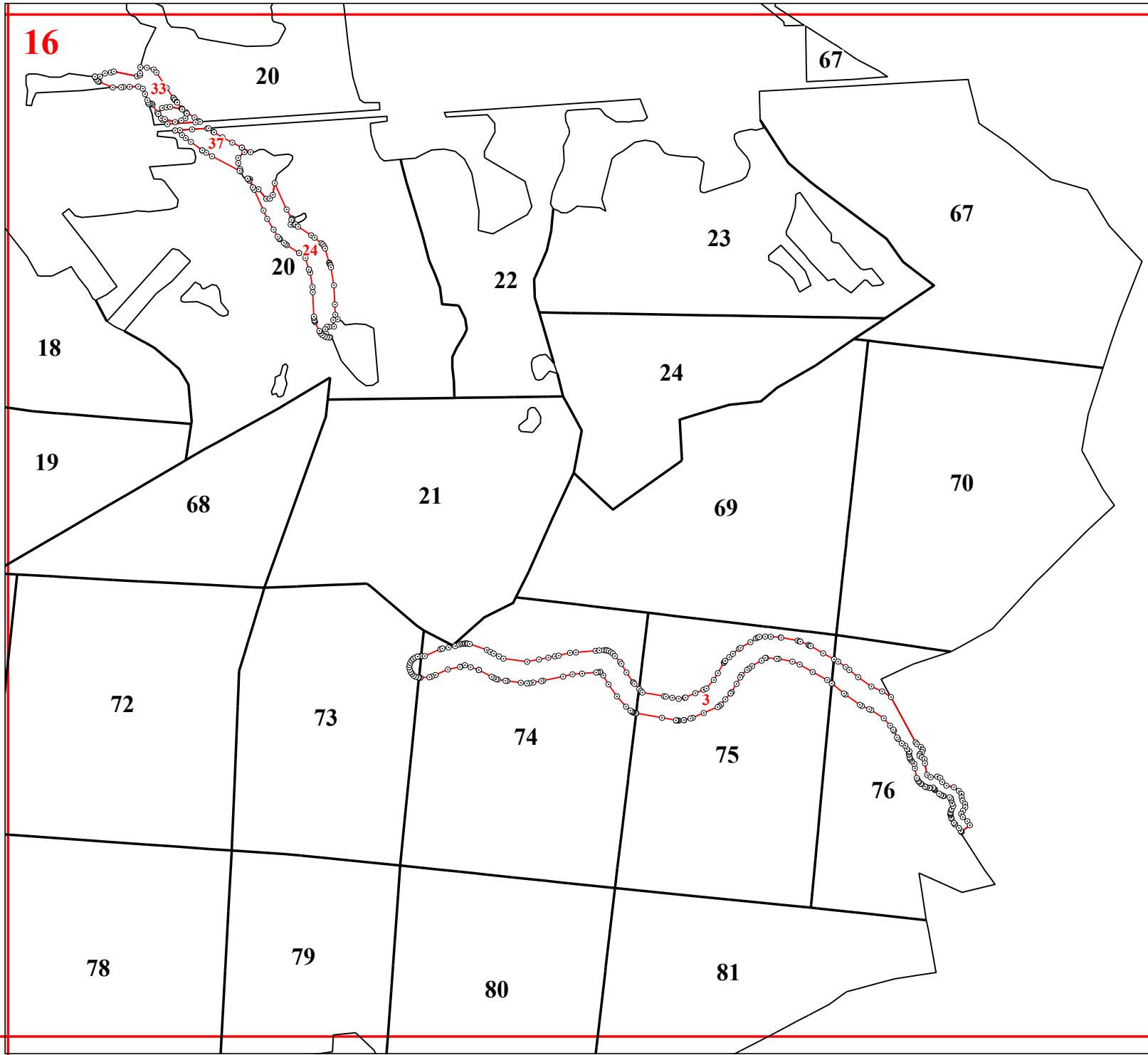








16



20

67

33

37

23

67

22

20

24

24

18

19

68

21

69

70

72

73

74

75

76

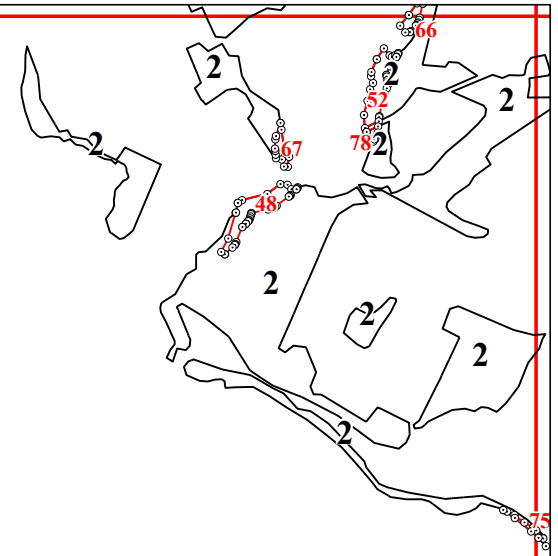
3

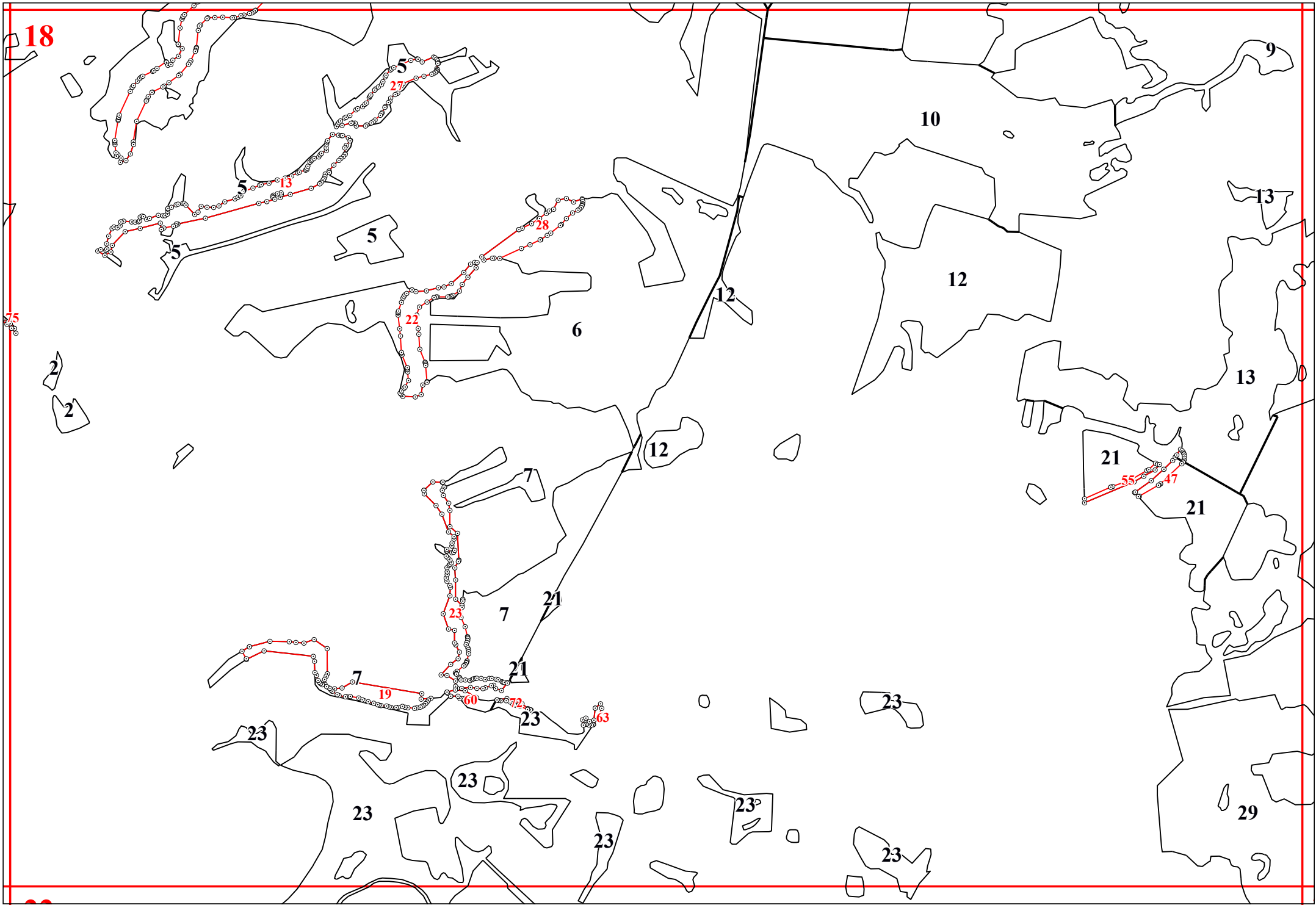
78

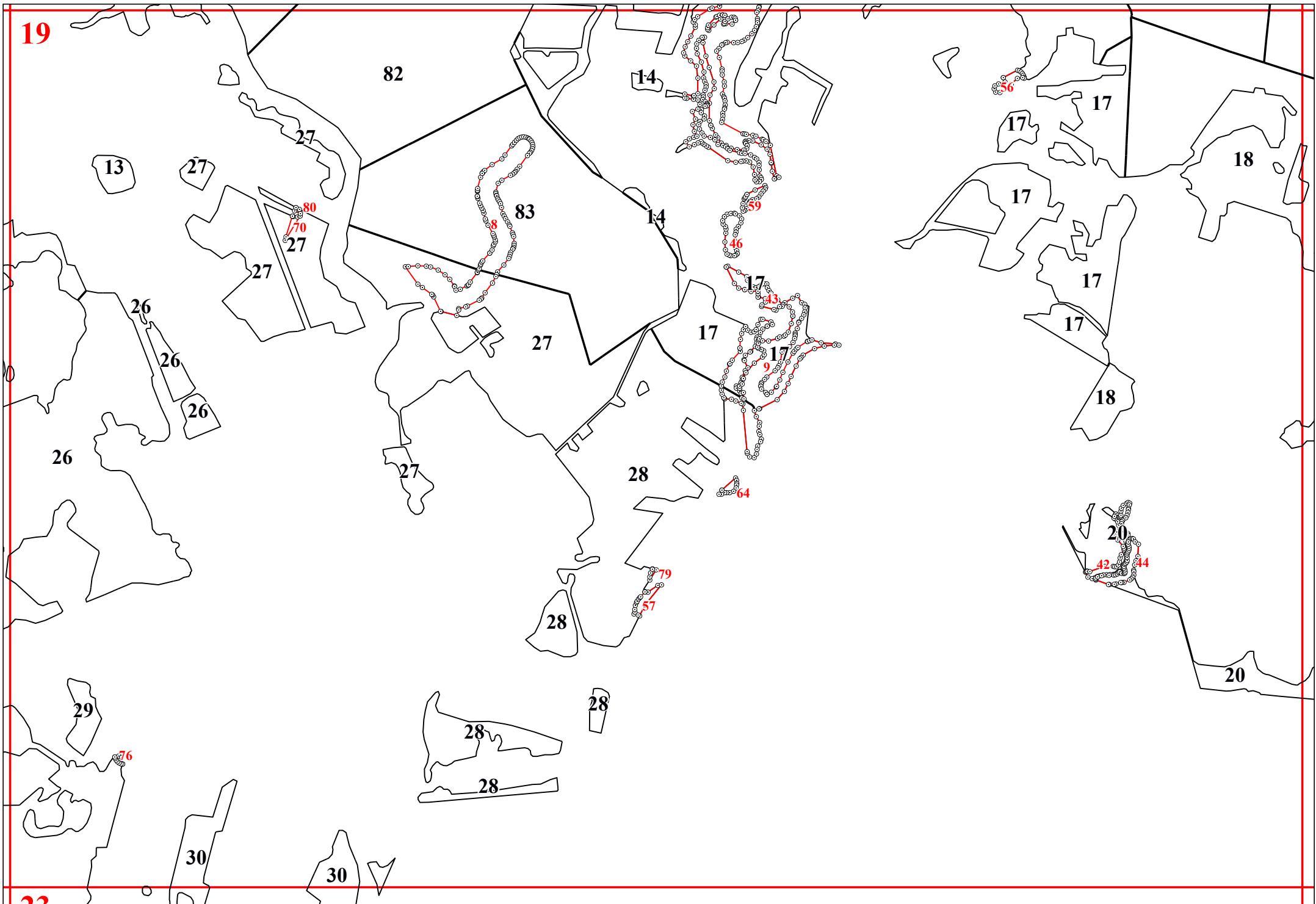
79

80

81







20

19

19

18

20



22

