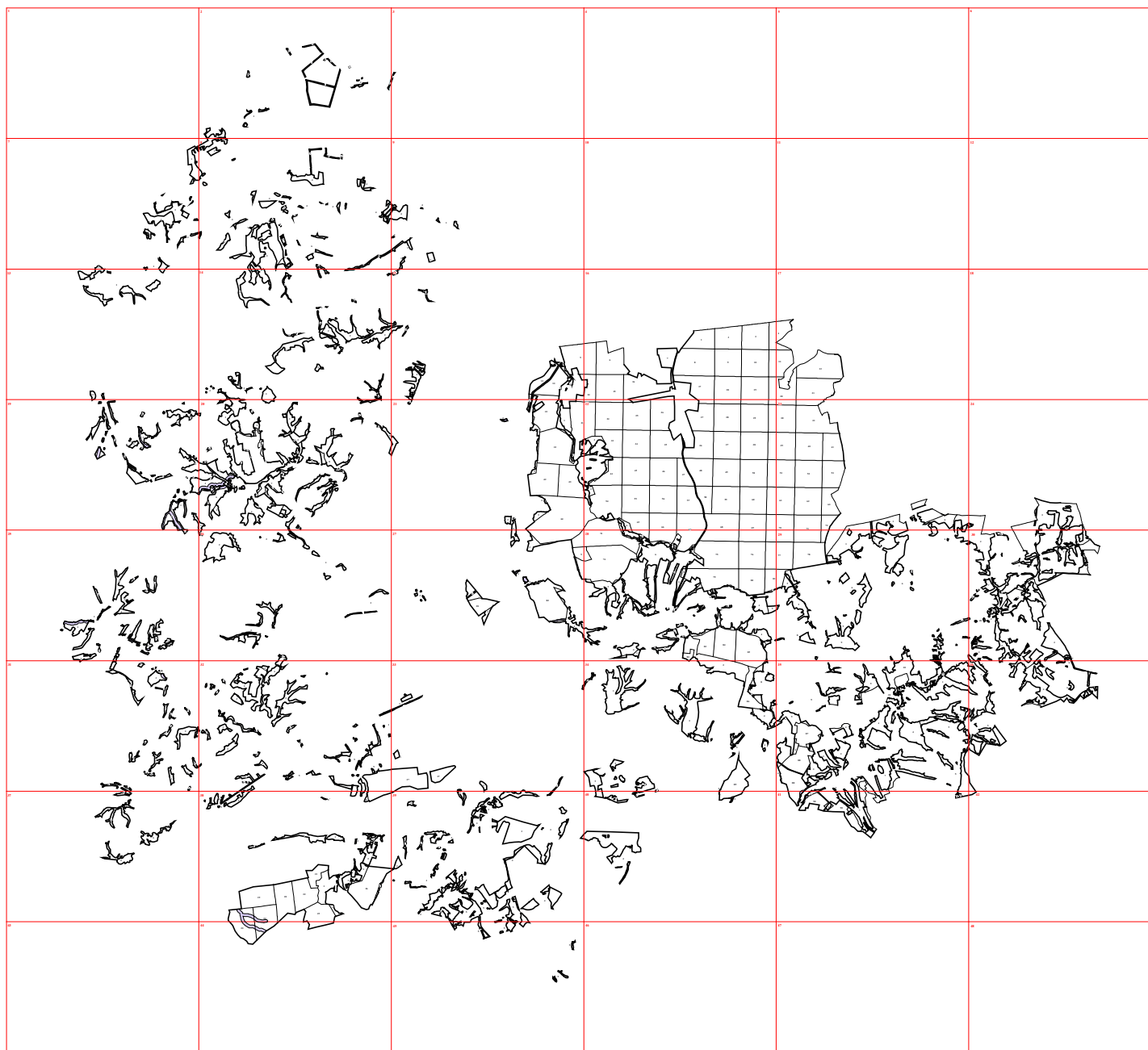
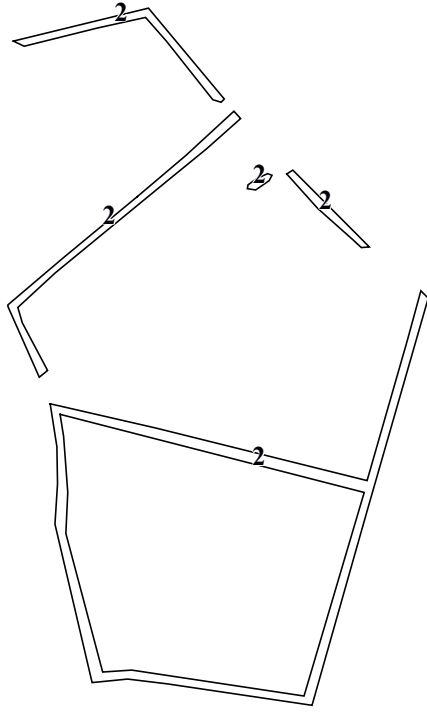
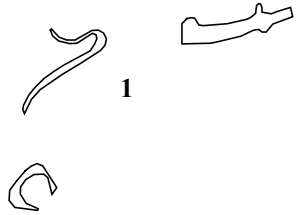
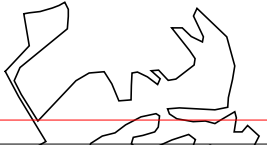


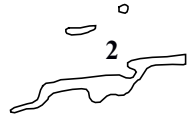
Графическое описание местоположения границ земель, расположенные в водоохранных зонах, на территории Желовского участкового лесничества Калужского лесничества Калужской области

Приложение № 4 к приказу Рослесхоза от 28.02.2023 № 264





2



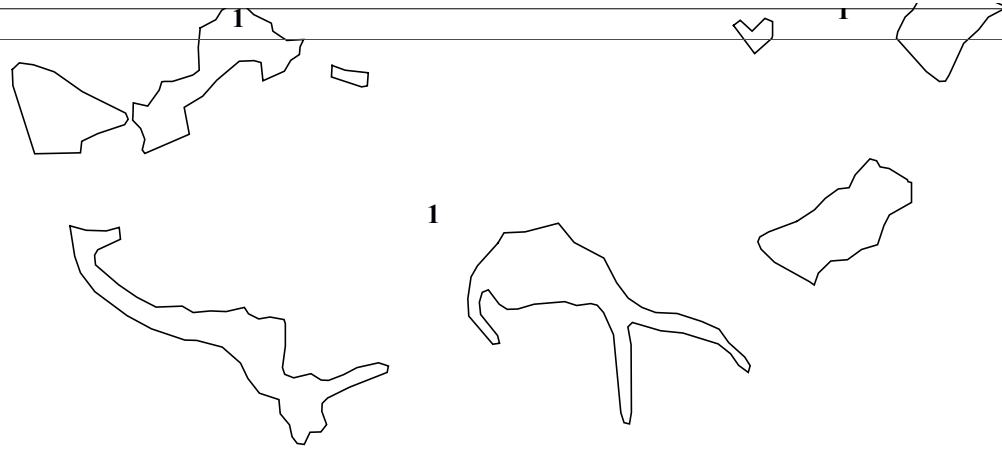
3

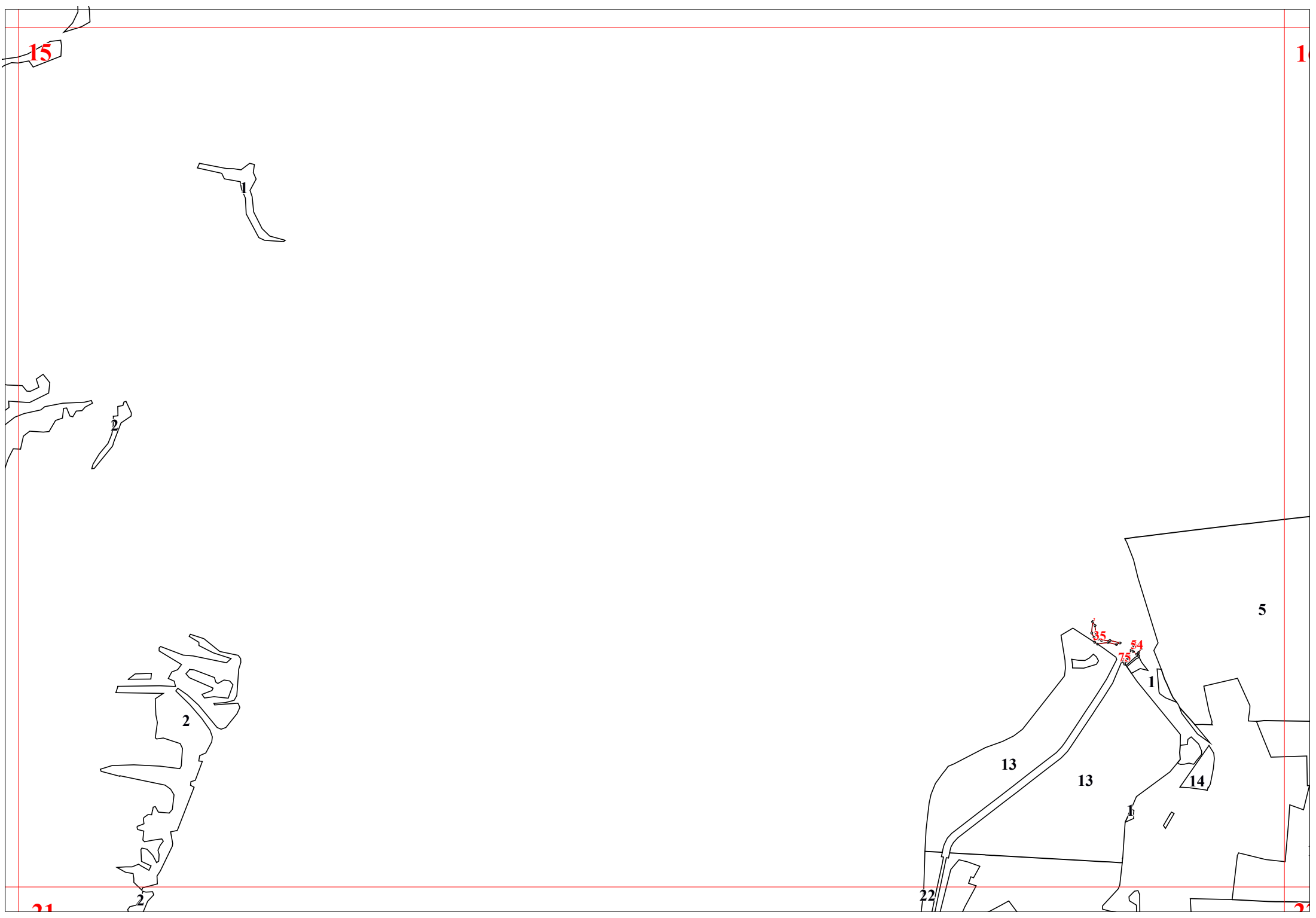
4

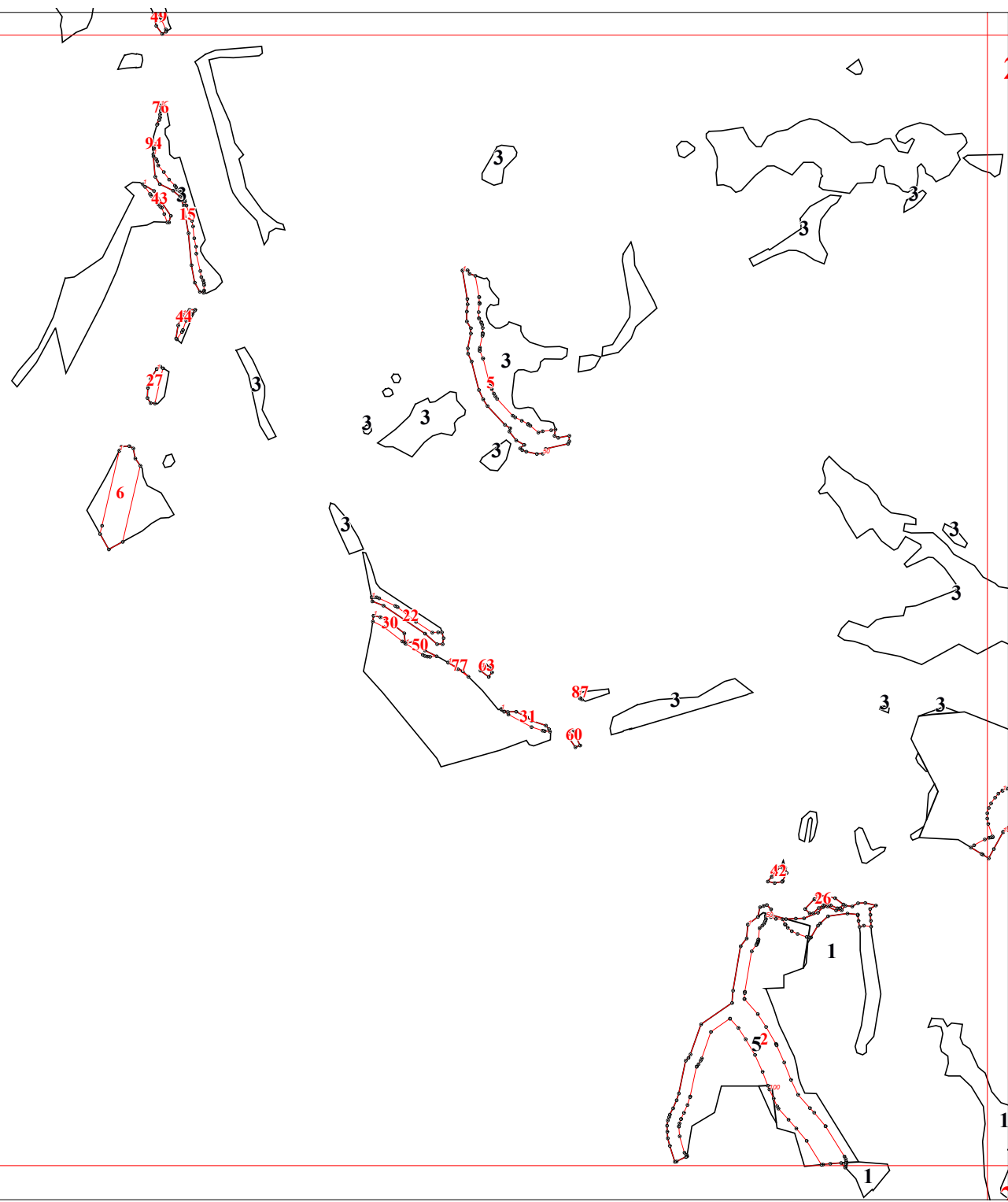
2
2
59

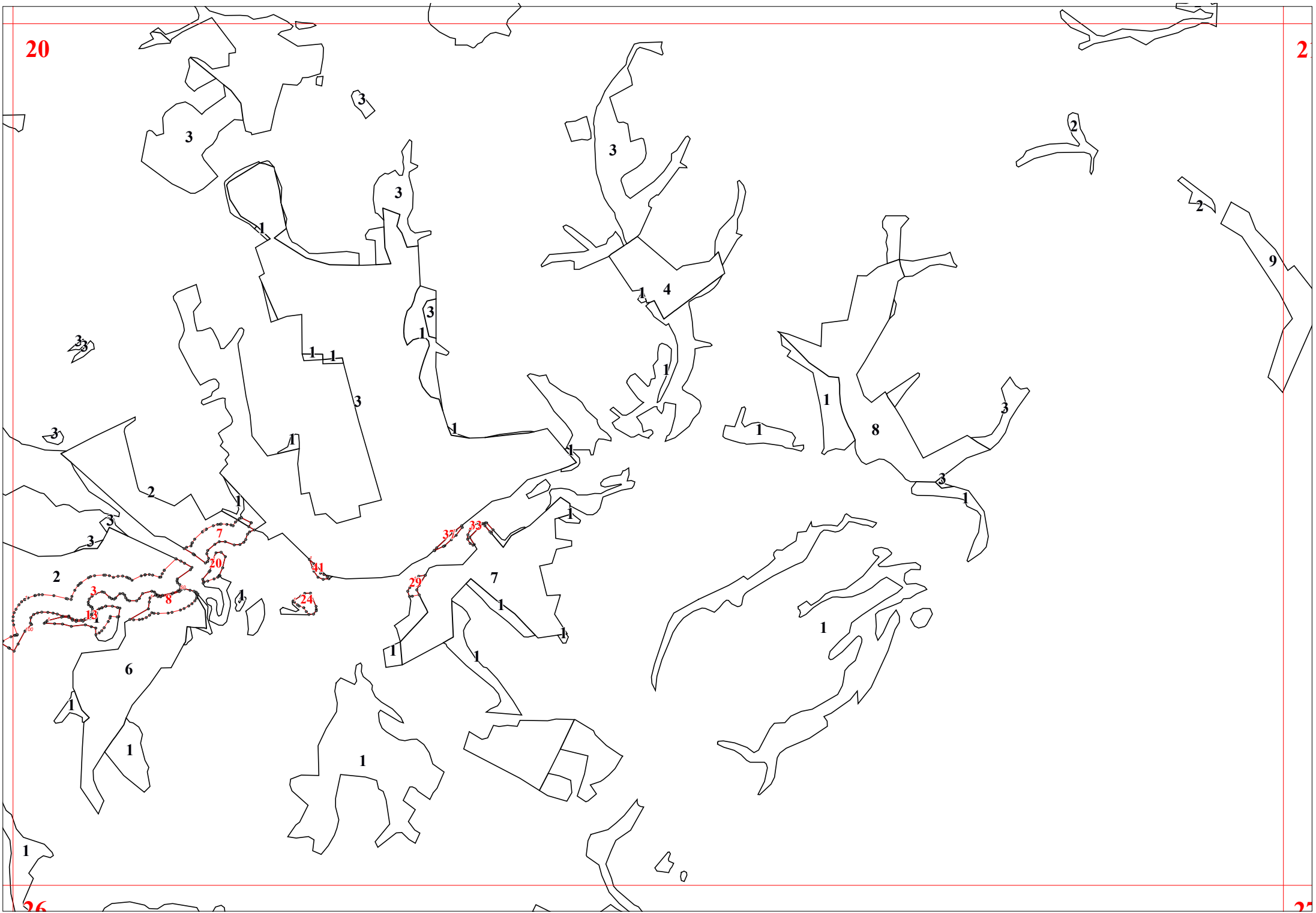
0

1









21

2

22

22

1

23

2
19

2

32

1

2

42

43

2

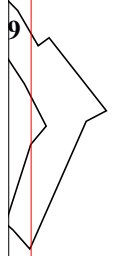
2

64

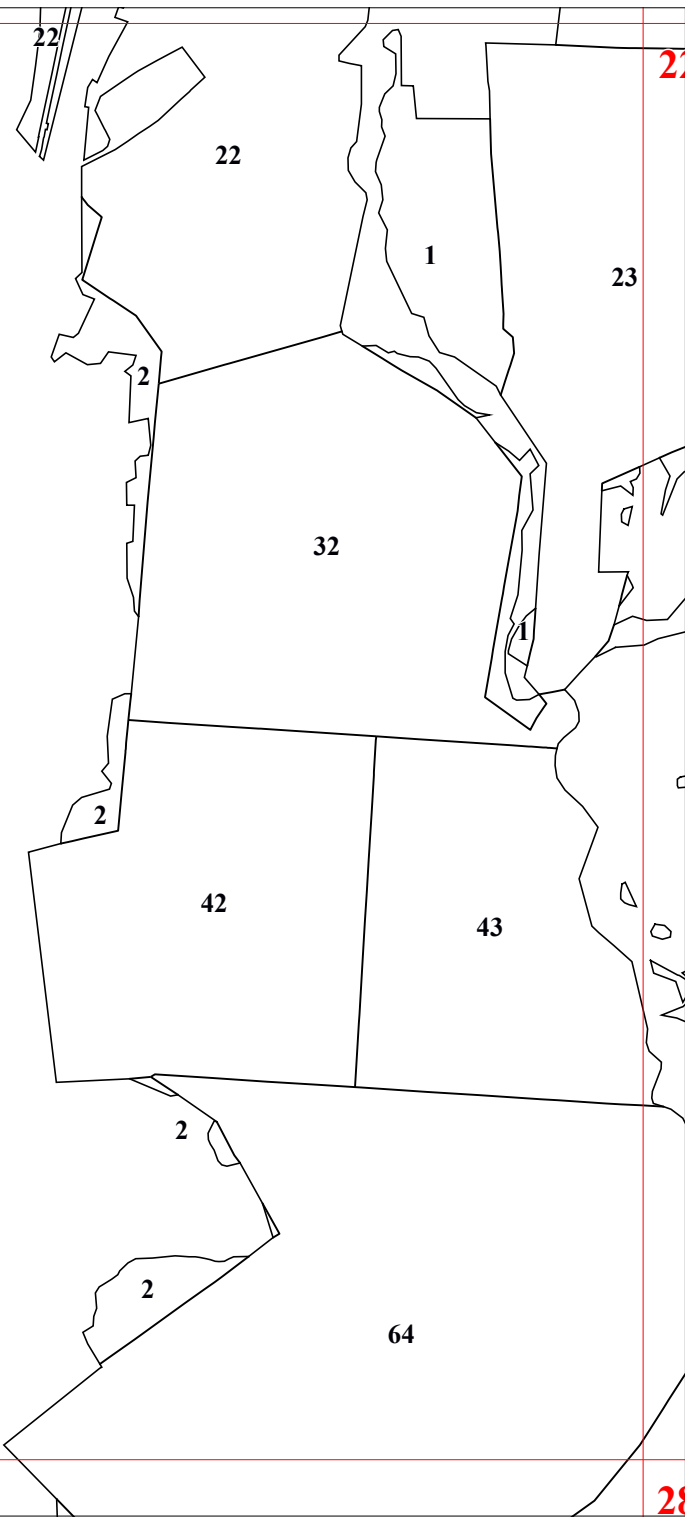
2

2

2



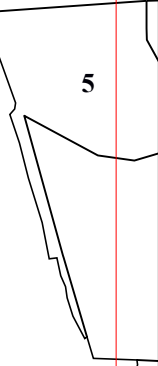
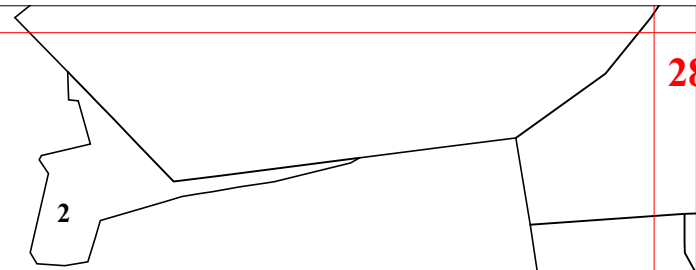
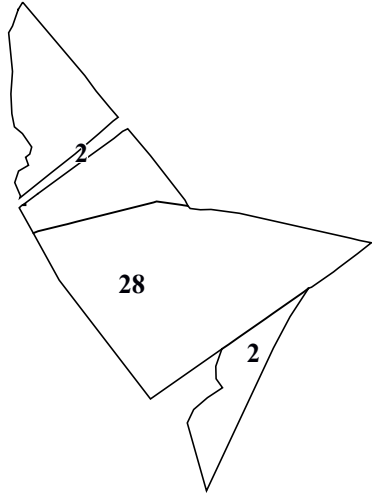
9



24

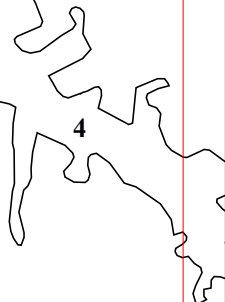
27

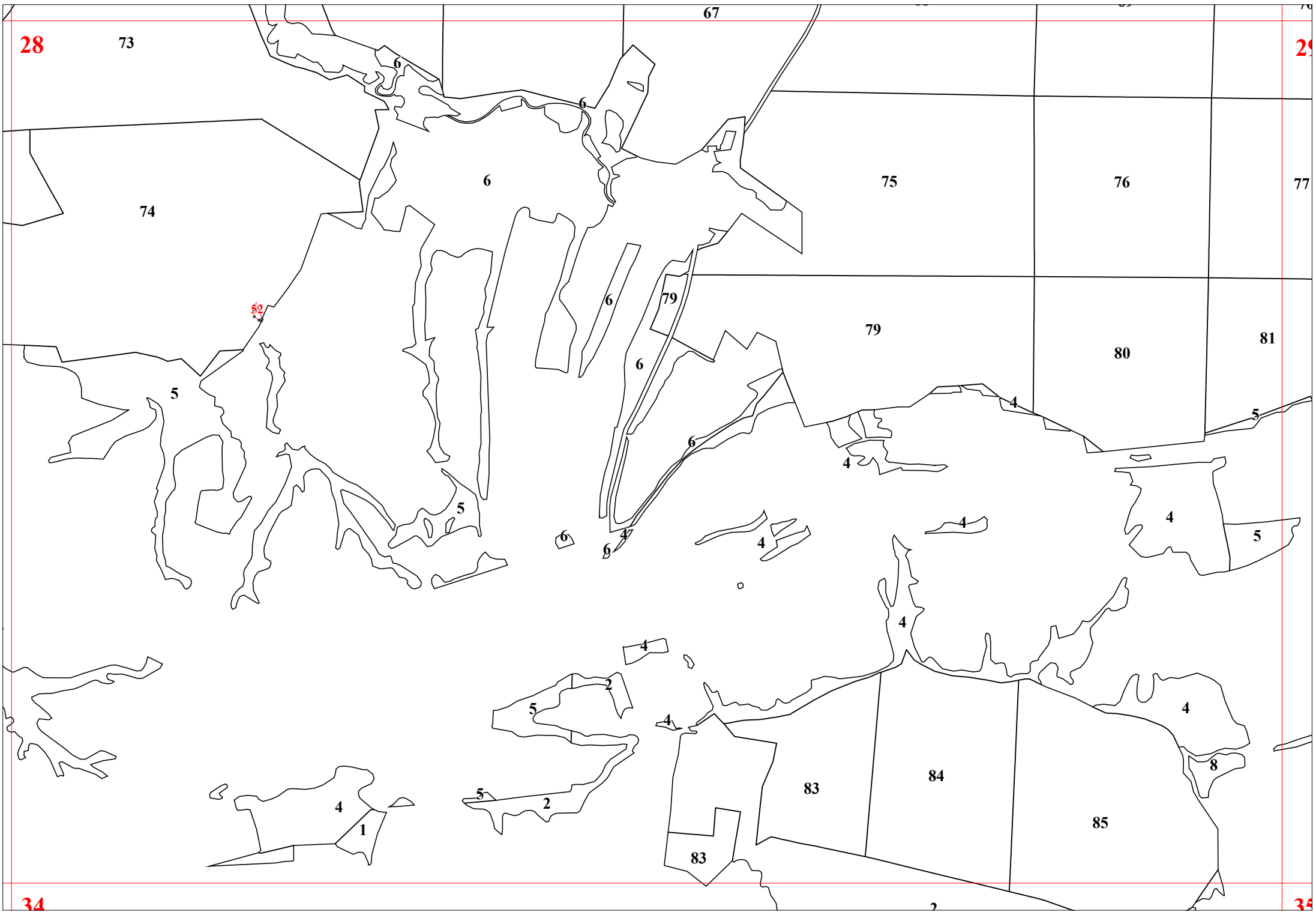
28

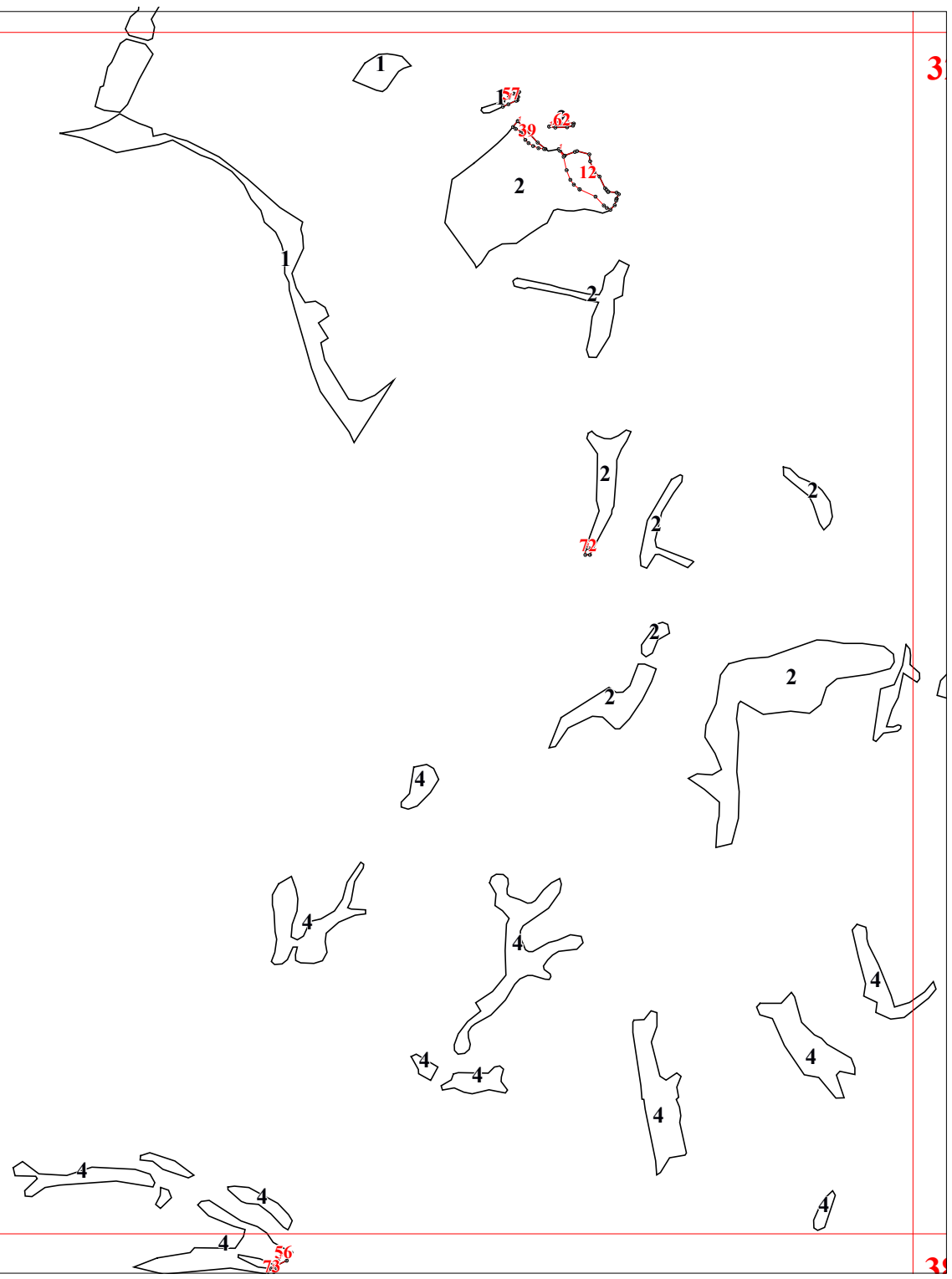


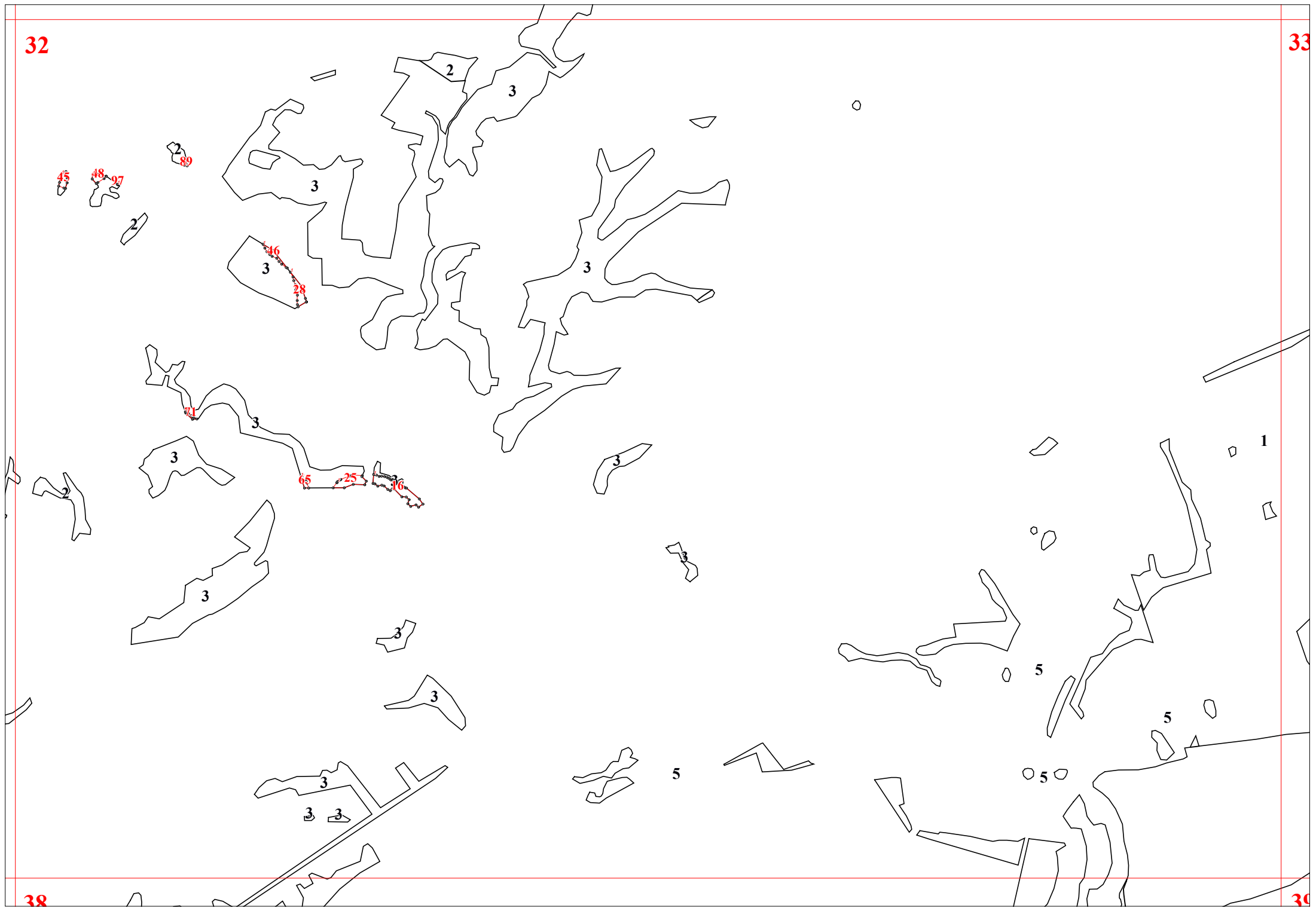
51 85

4



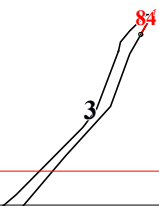
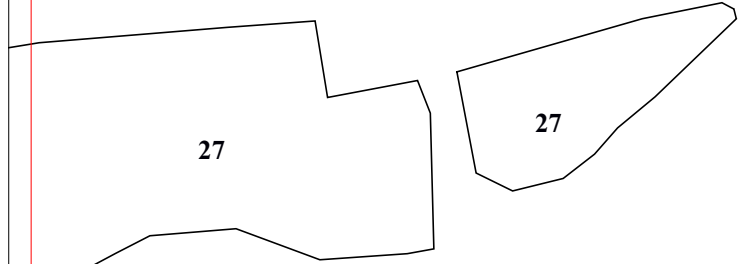
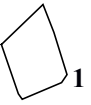
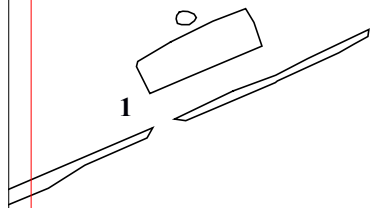






33

34



41

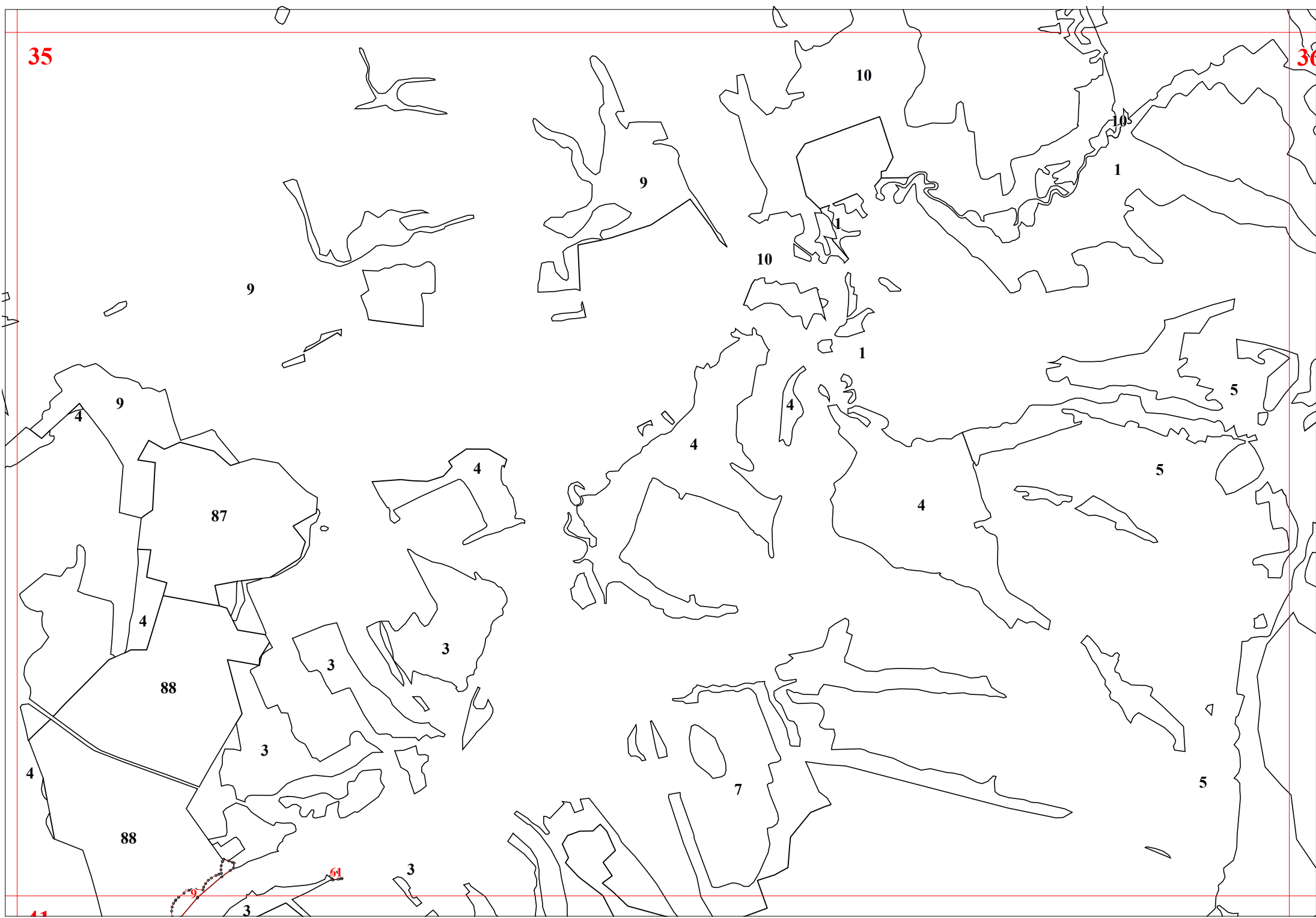
34

35



35

36



41

9

61

3

3

7

5

4

5

5

4

4

1

10

10

9

9

9

4

4

87

4

3

3

88

3

4

88

9

3

3

7

5

4

5

5

4

4

1

10

10

9

9

9

4

4

87

4

3

3

88

3

4

88

9

3

3

7

5

4

5

5

4

4

1

10

10

9

9

9

4

4

87

4

3

3

88

3

4

88

9

3

3

7

5

4

5

5

4

4

1

10

10

9

9

9

4

4

87

4

3

3

88

3

4

88

9

3

3

7

5

4

5

5

4

4

1

10

10

9

9

9

4

4

87

4

3

3

88

3

4

88

9

3

3

7

5

4

5

5

4

4

1

10

10

9

9

9

4

4

87

4

3

3

88

3

4

88

9

3

3

7

5

4

5

5

4

4

1

10

10

9

9

9

4

4

87

4

3

3

88

3

4

88

9

3

3

7

5

4

5

5

4

4

1

10

10

9

9

9

4

4

87

4

3

3

88

3

4

88

9

3

3

7

5

4

5

5

4

4

1

10

10

9

9

9

4

4

87

4

3

3

88

3

4

88

9

3

3

7

5

4

5

5

4

4

1

10

10

9

9

9

4

4

87

4

3

3

88

3

4

88

9

3

3

7

5

4

5

5

4

4

1

10

10

9

9

9

4

4

87

4

3

3

88

3

4

88

9

3

3

7

5

4

5

5

4

4

1

10

10

9

9

9

4

4

87

4

3

3

88

3

4

88

9

3

3

7

5

4

5

5

4

4

1

10

10

9

9

9

4

4

87

4

3

3

88

3

4

88

9

3

3

7

5

4

5

5

4

4

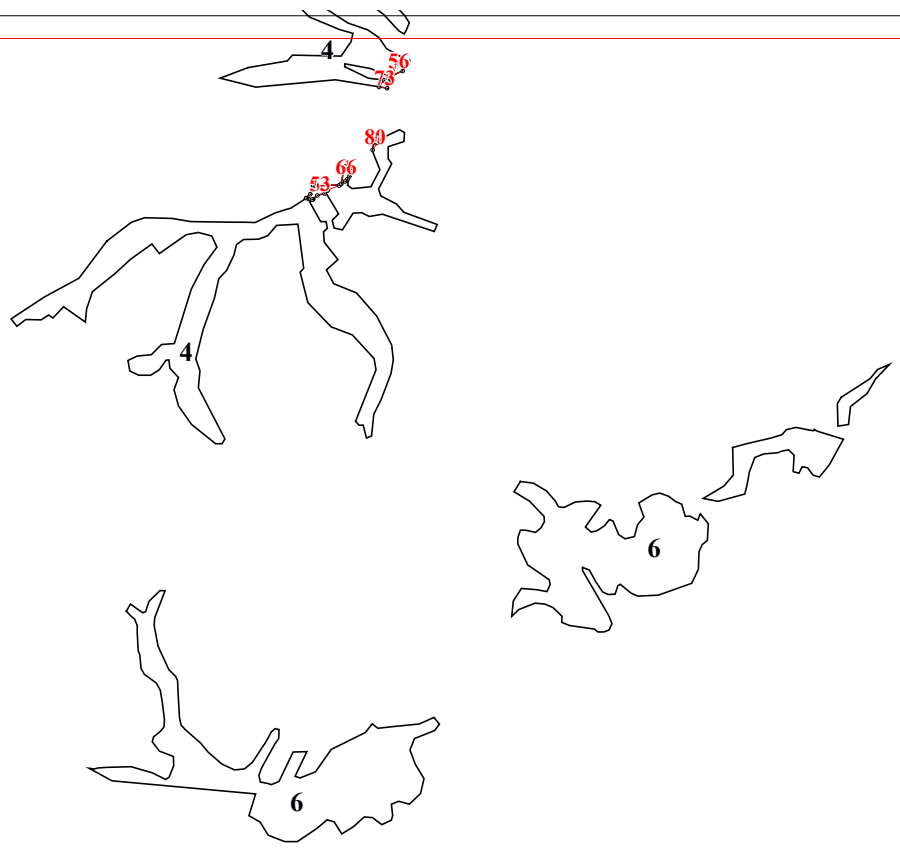
1

10

10

9

9

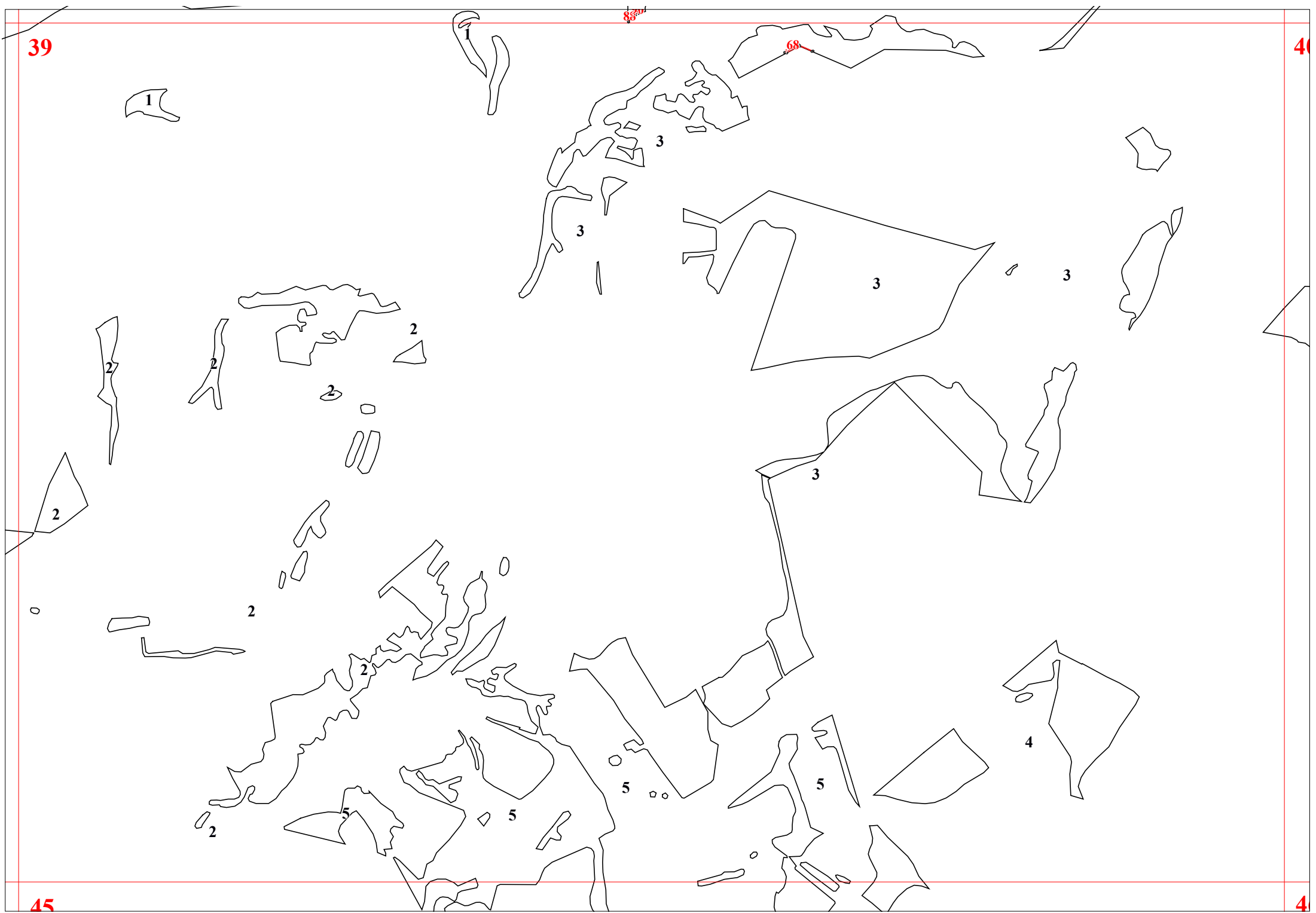


39

88

68

40



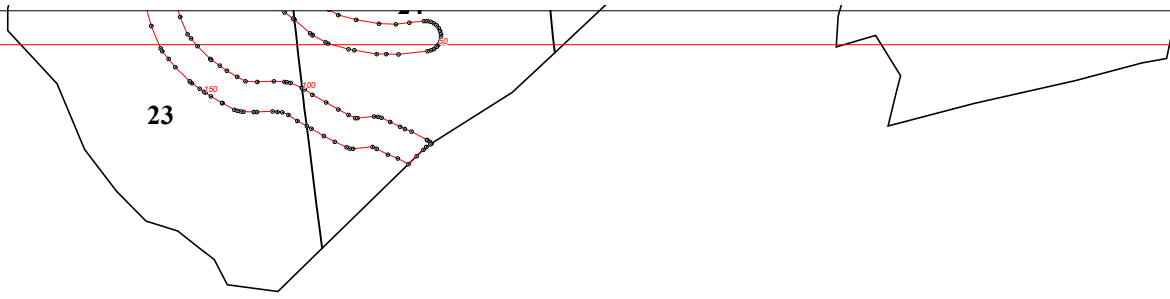
45

4

41



44



23

44