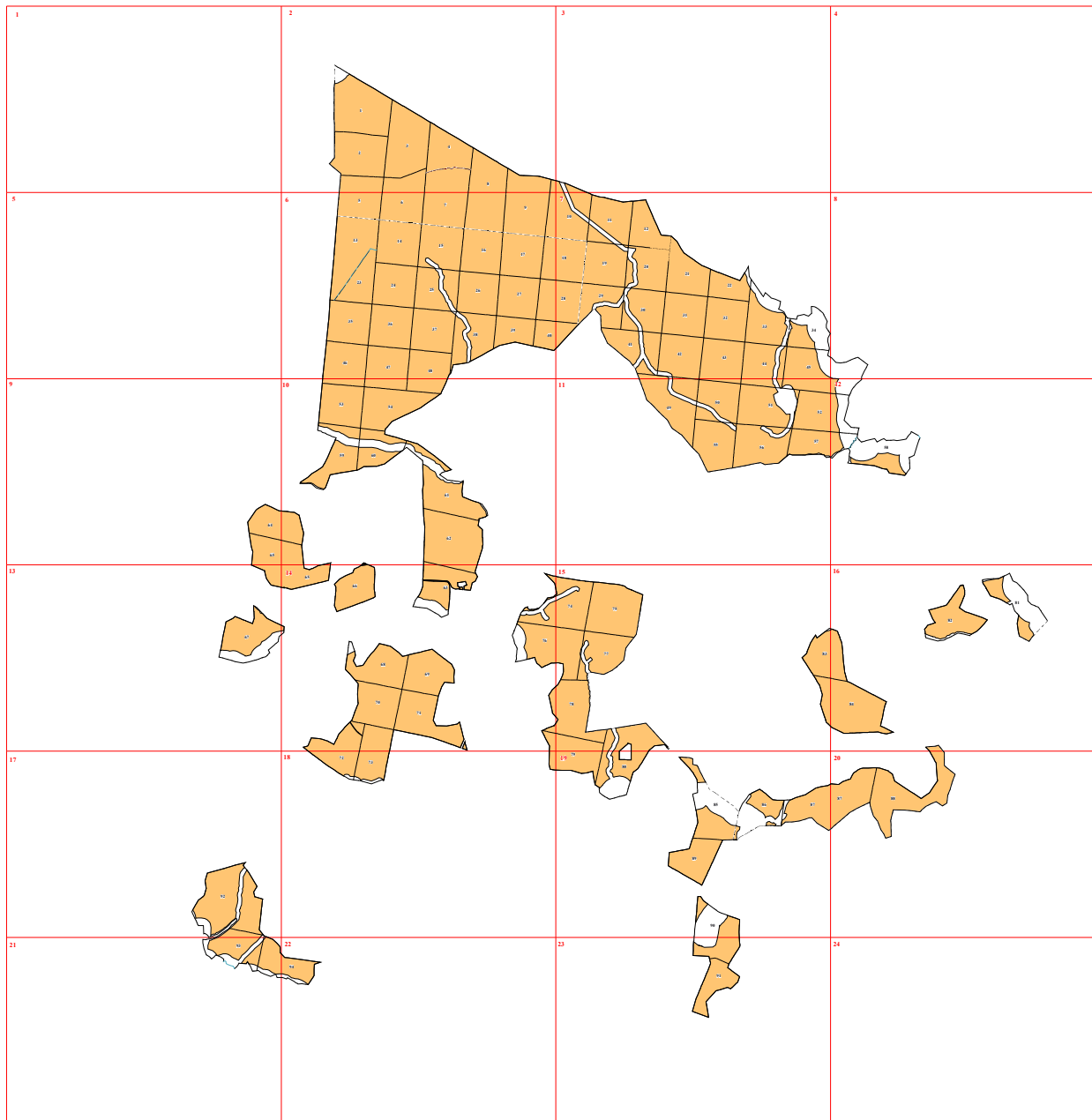
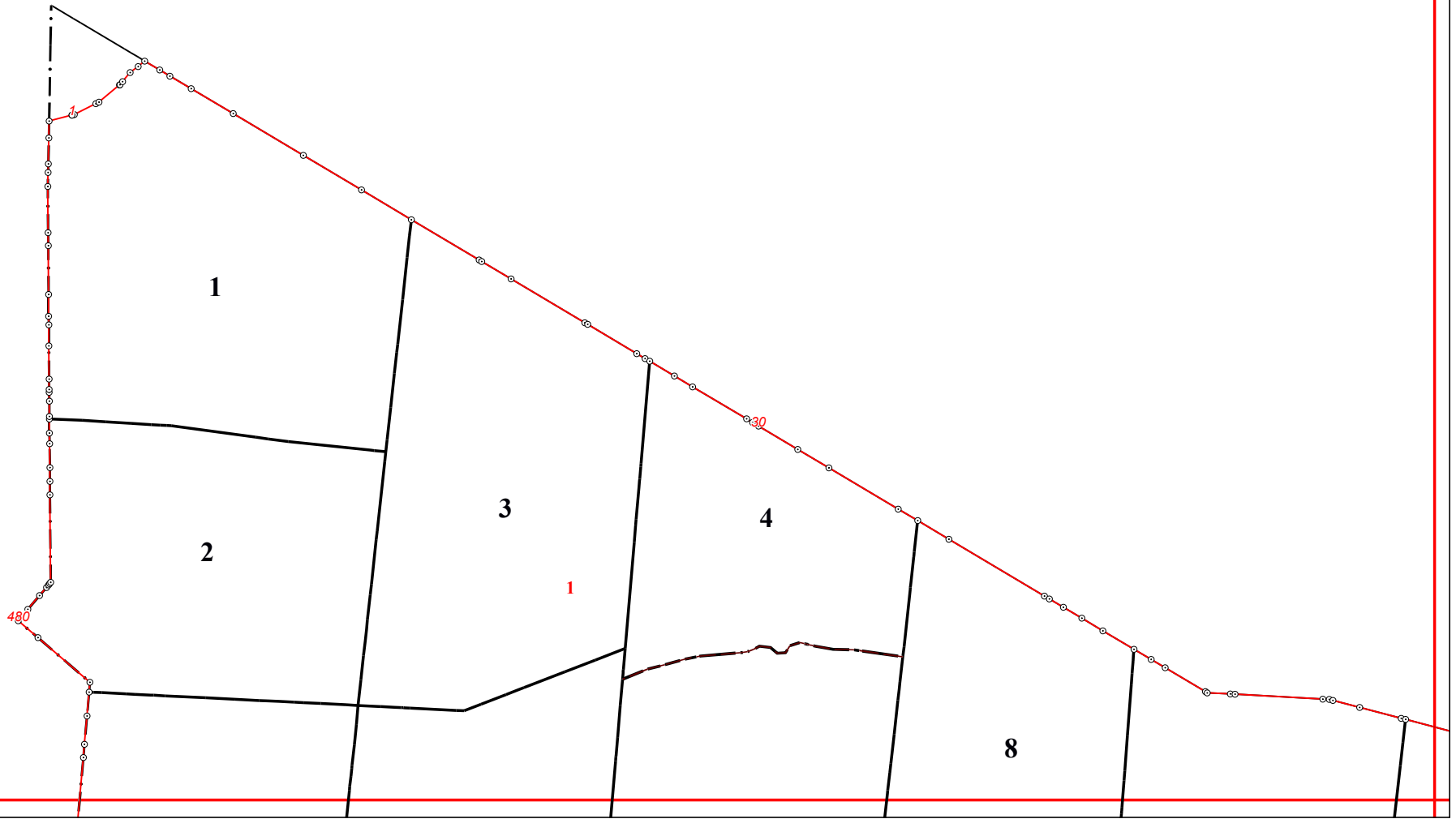


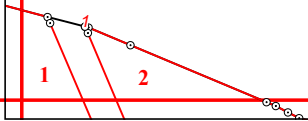
**Графическое описание местоположения границ земель,
на которых располагаются эксплуатационные леса, на
территории Сухоруковского участкового лесничества
Судиславского лесничества Костромской области**

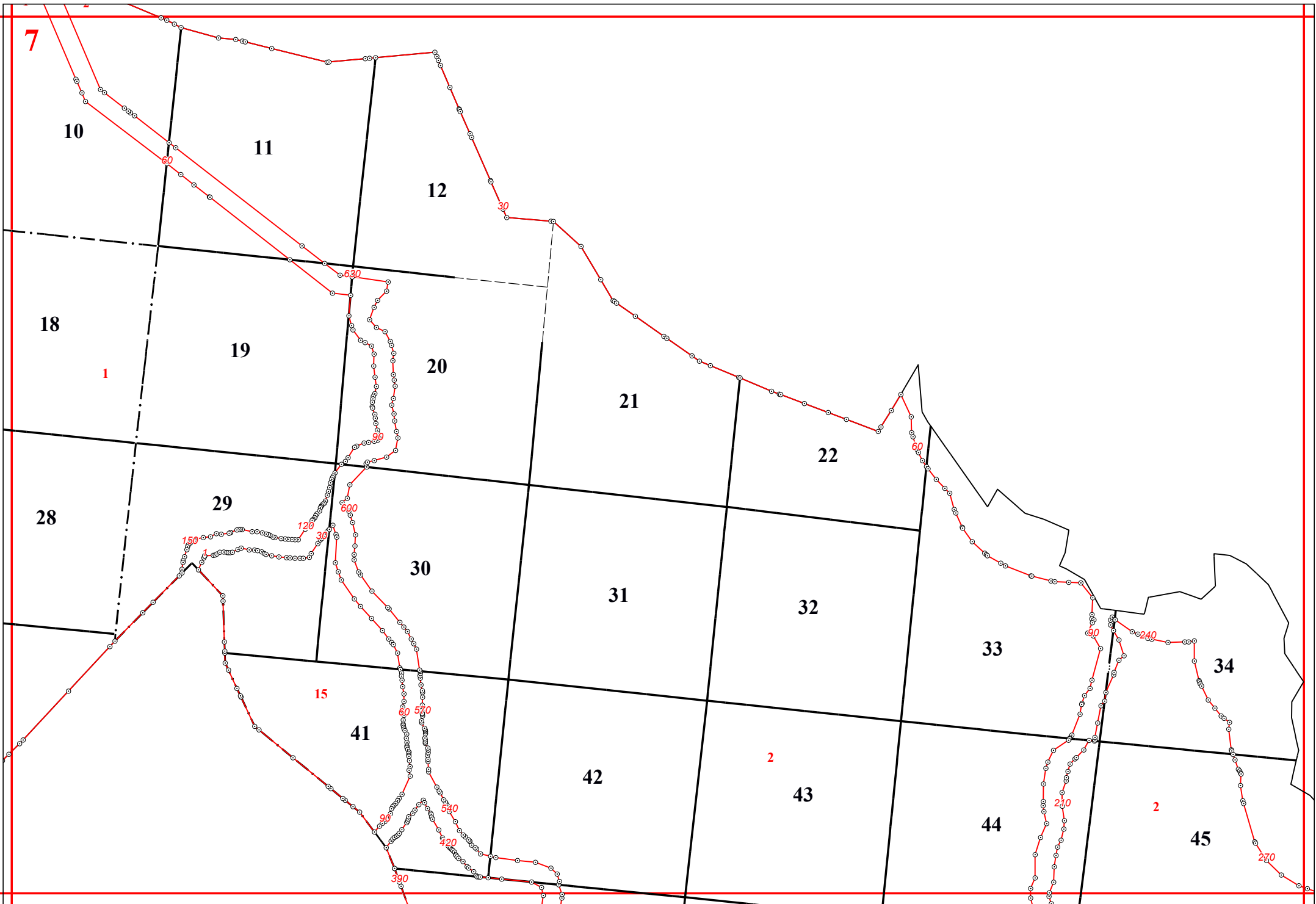
Приложение № 58 к приказу Рослесхоза
от 28.02.2023 № 310

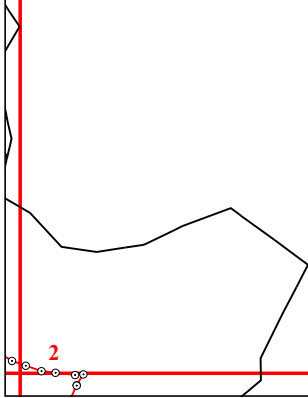


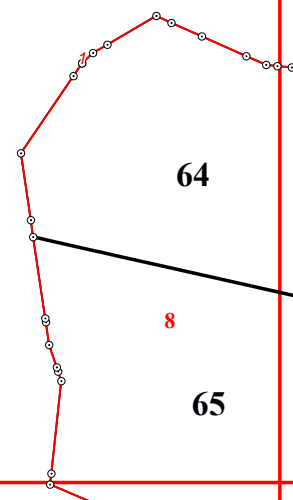


3

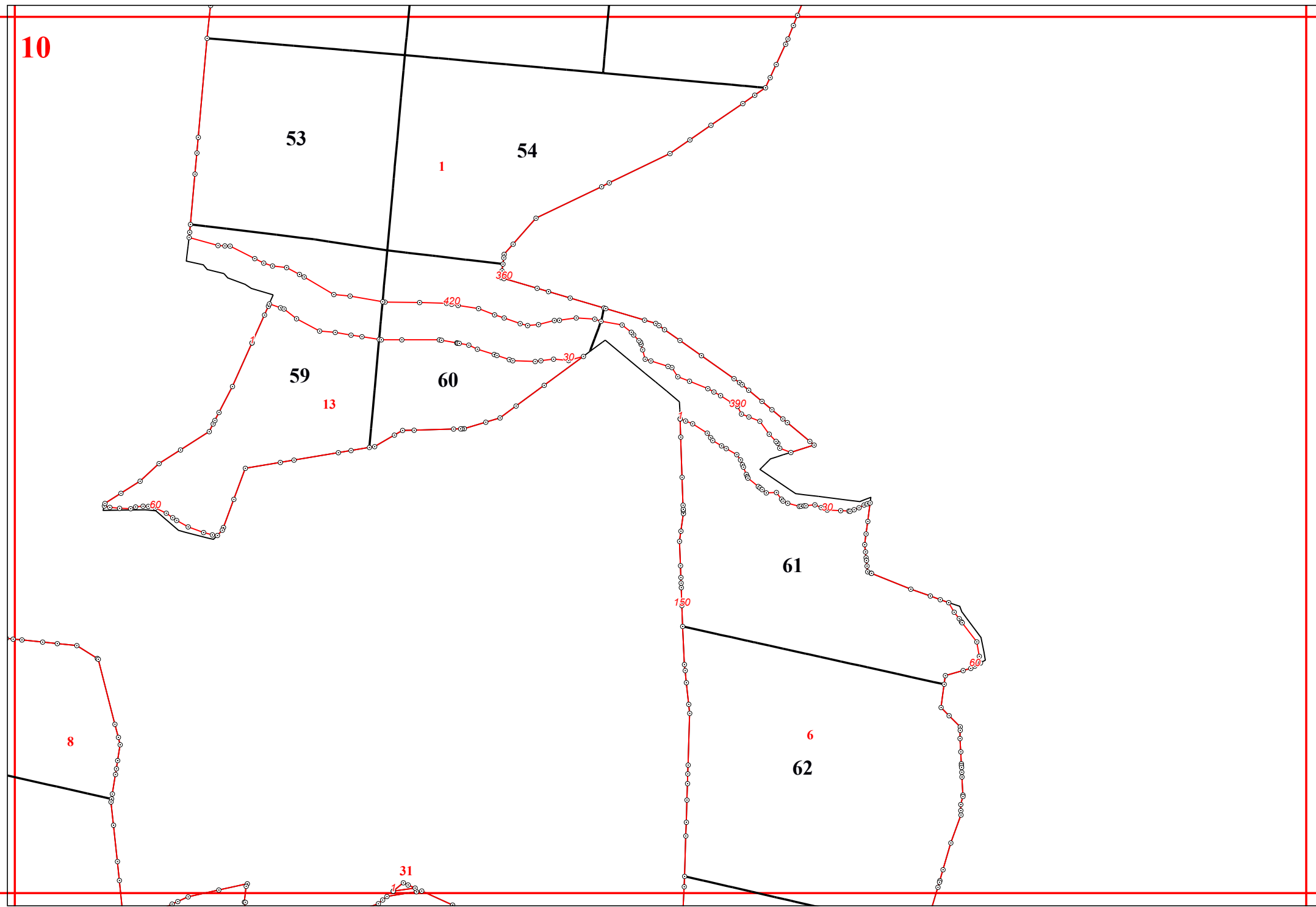




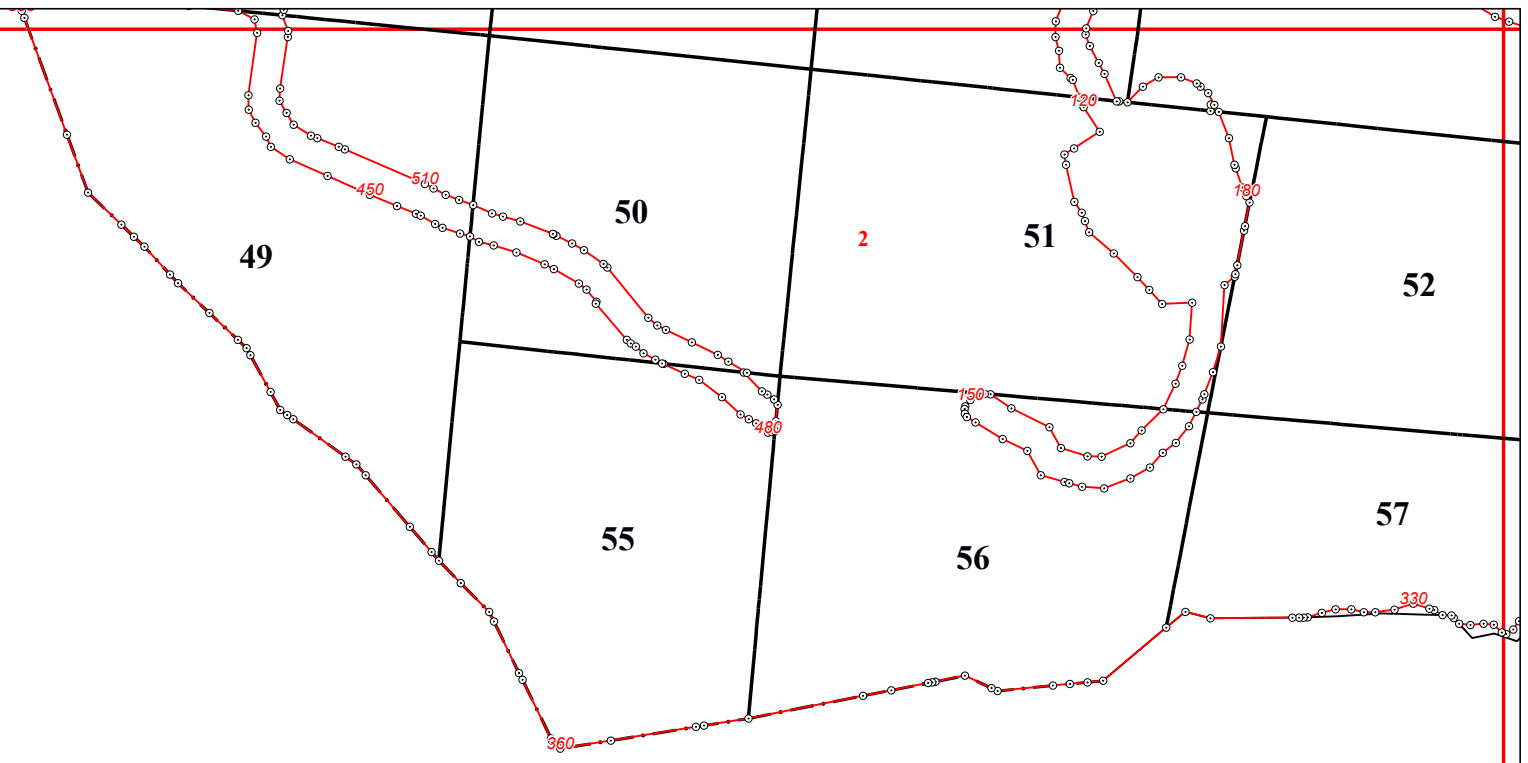


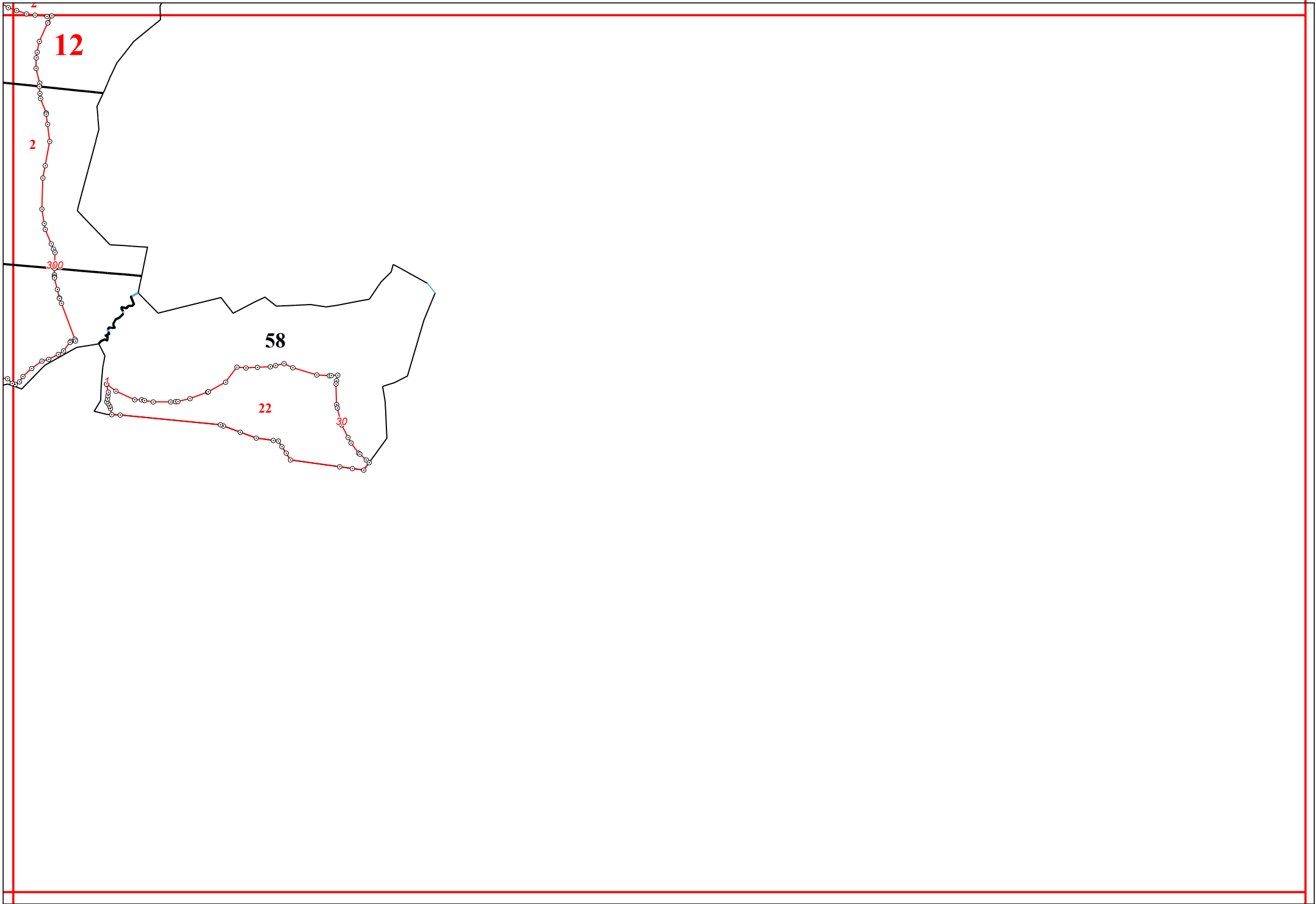


10

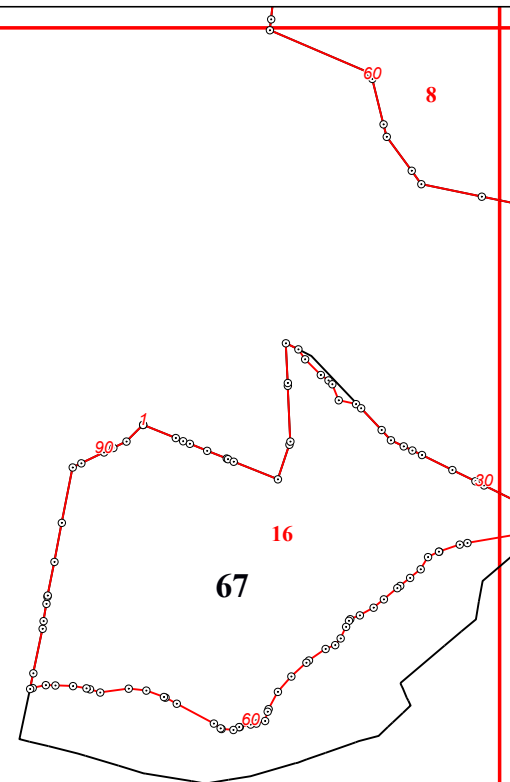


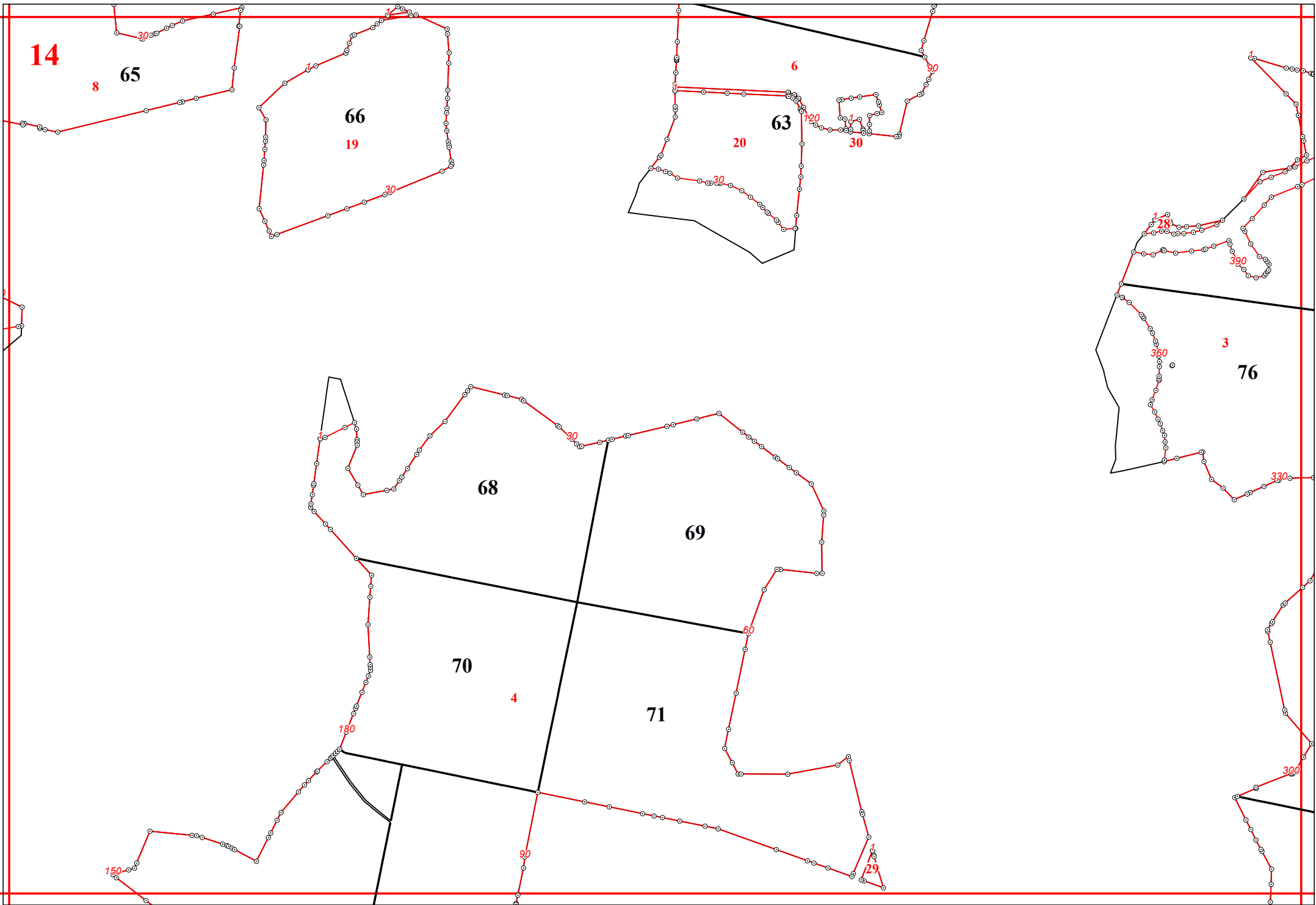
11





13





15

74

75

3

77

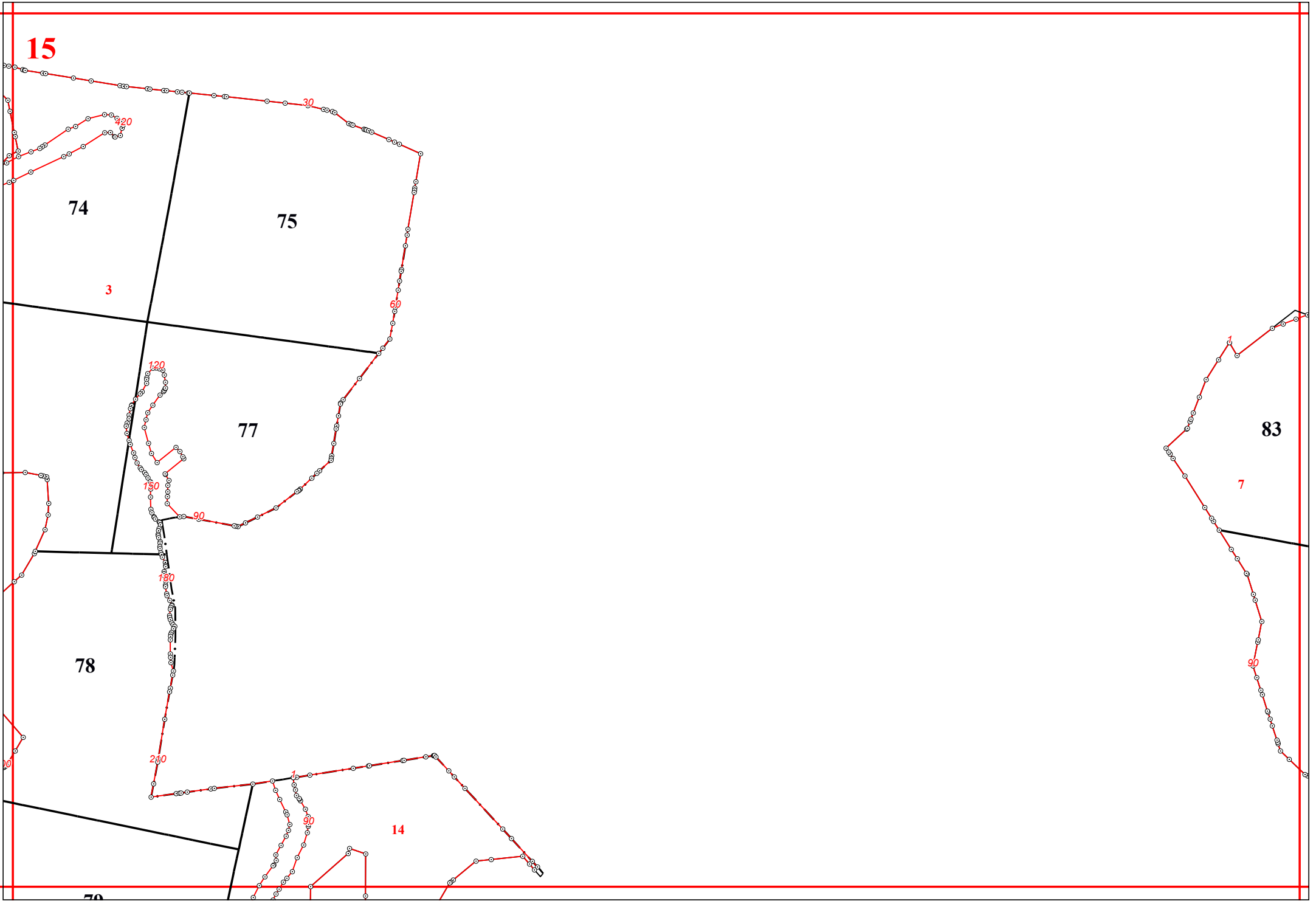
78

79

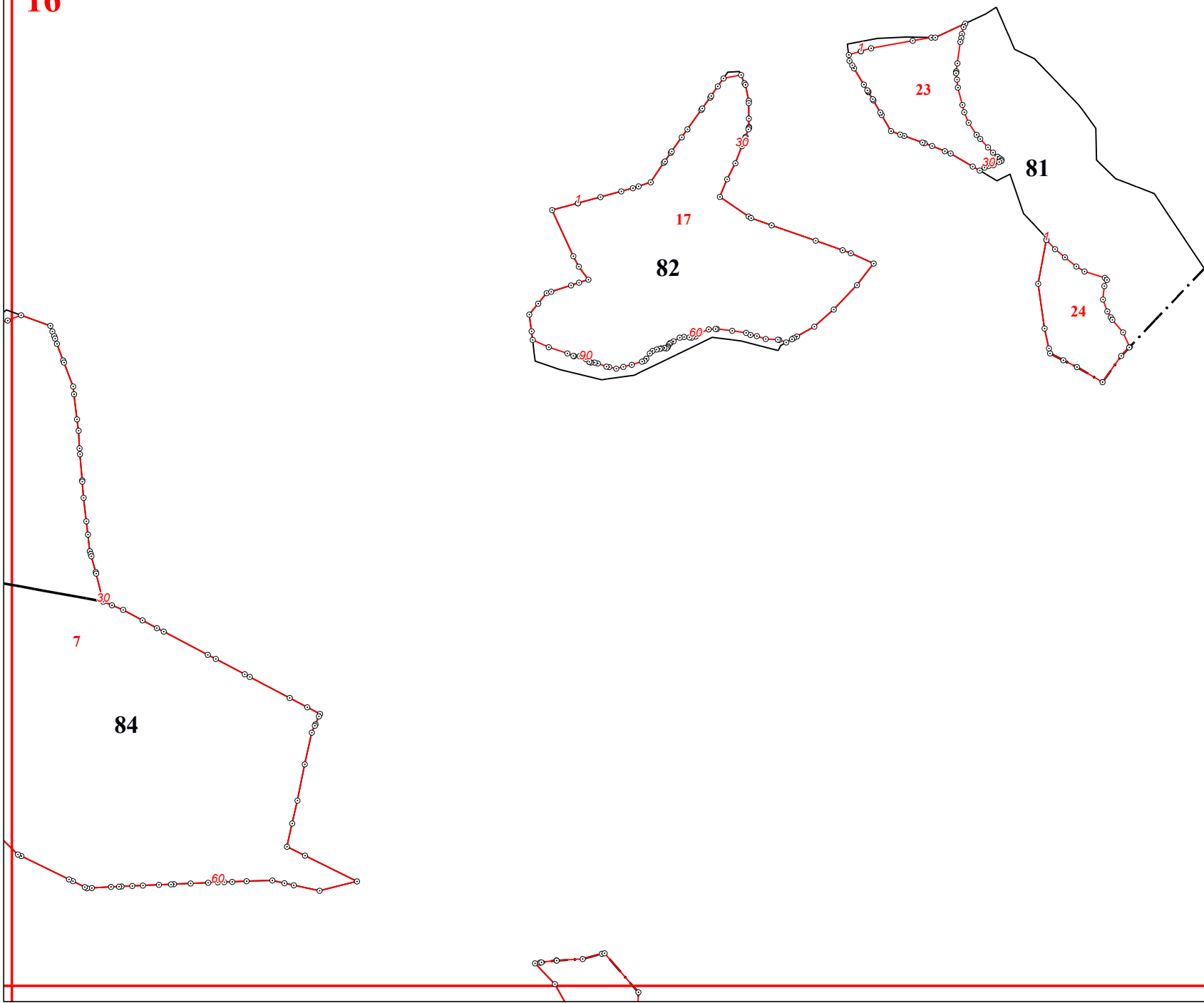
14

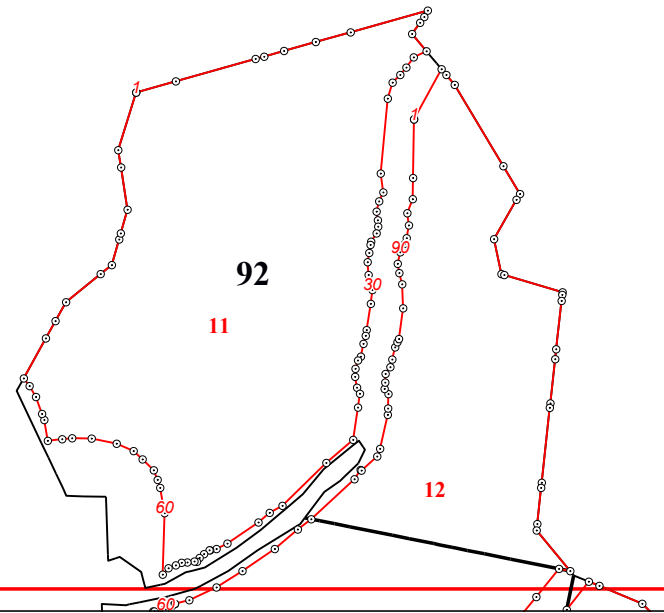
83

7



16





18

72

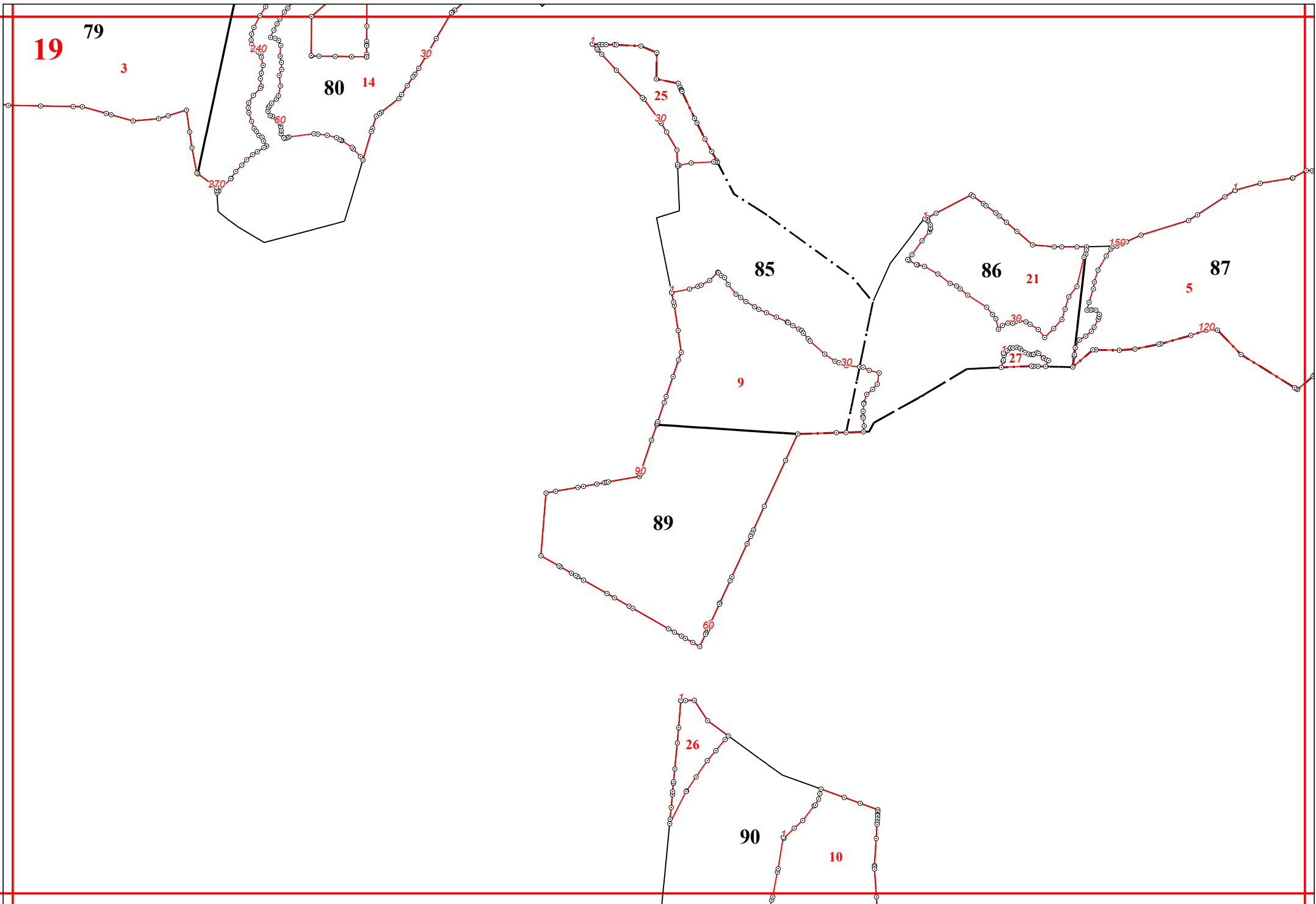
73

4

120

3





20

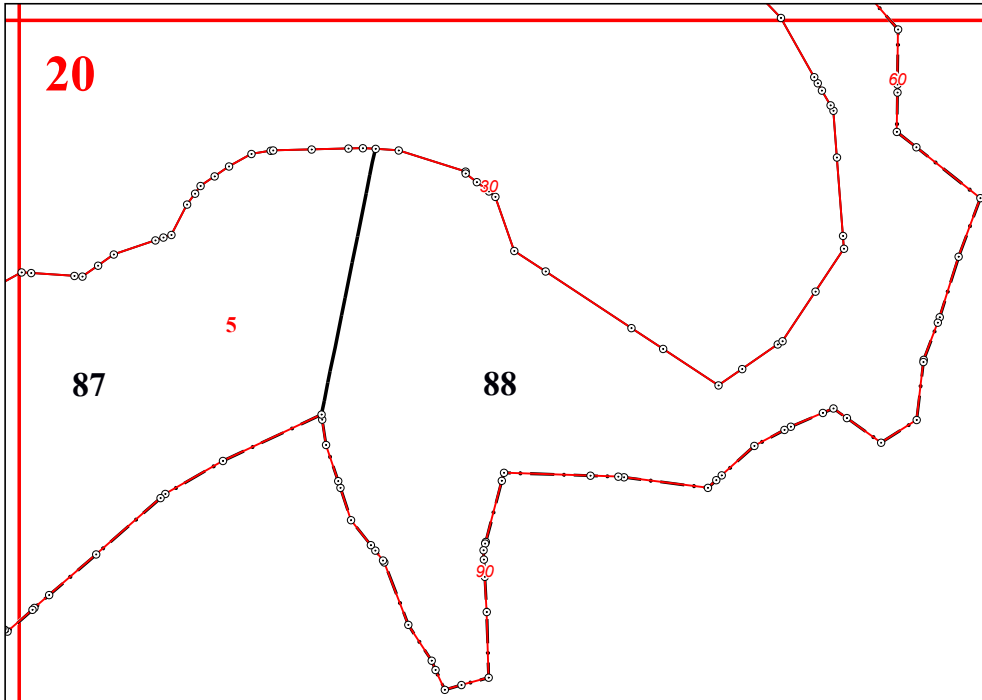
5

87

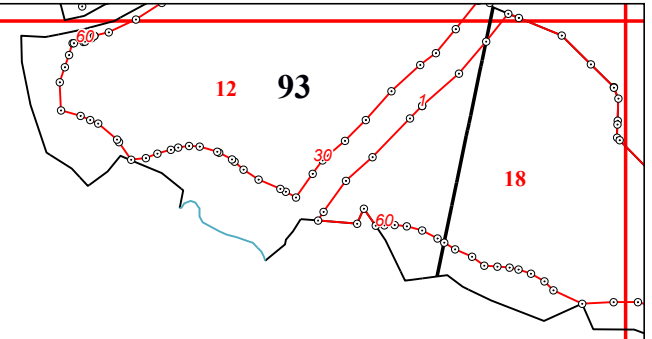
88

89

90



21



22

