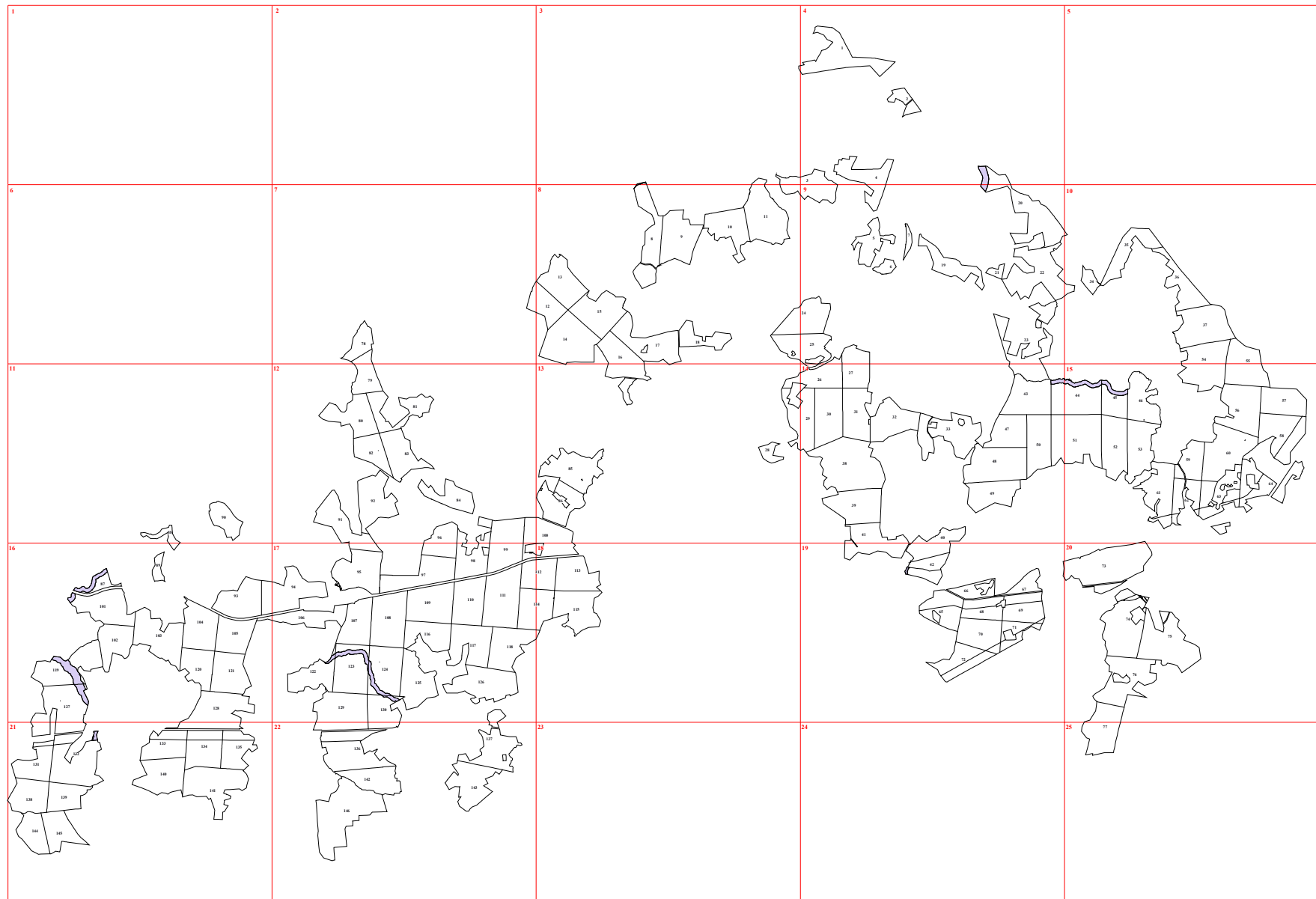
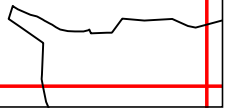


**Графическое описание местоположения границ земель, на которых
располагаются леса, расположенные в водоохраных зонах, на территории
Можайского участкового лесничества Бородинского лесничества Московской области**



3

1 9 20
40



4

1

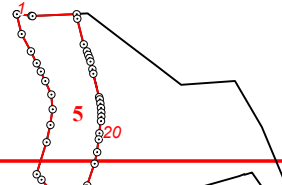
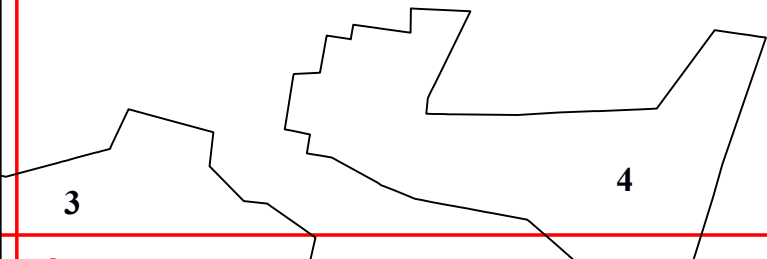
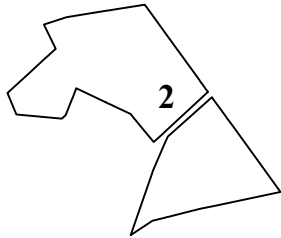
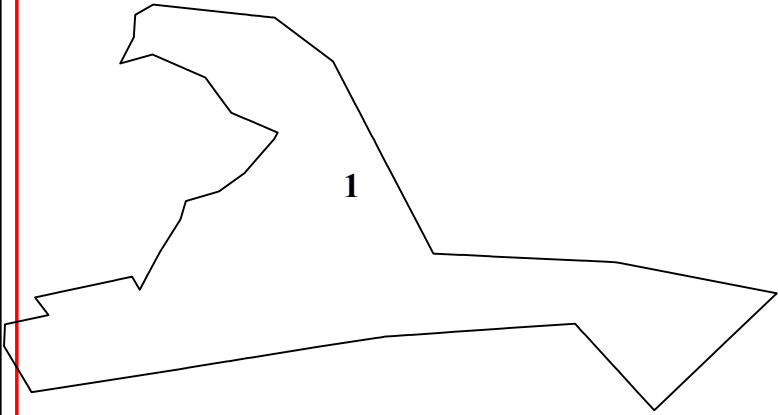
2

3

4

5

20



8

40

8

9

10

11

13

12

15

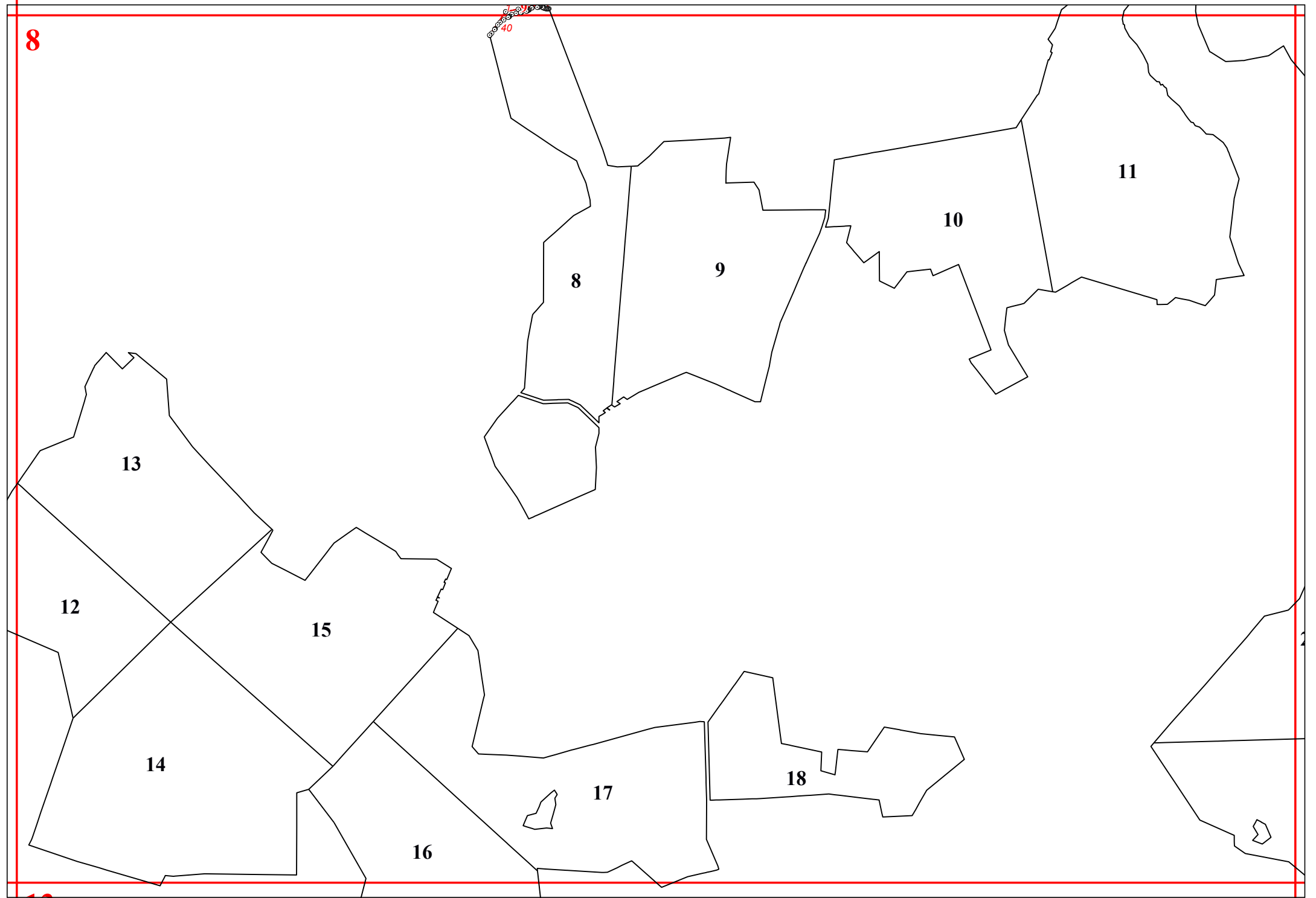
14

16

17

18

19



9

5

5
6

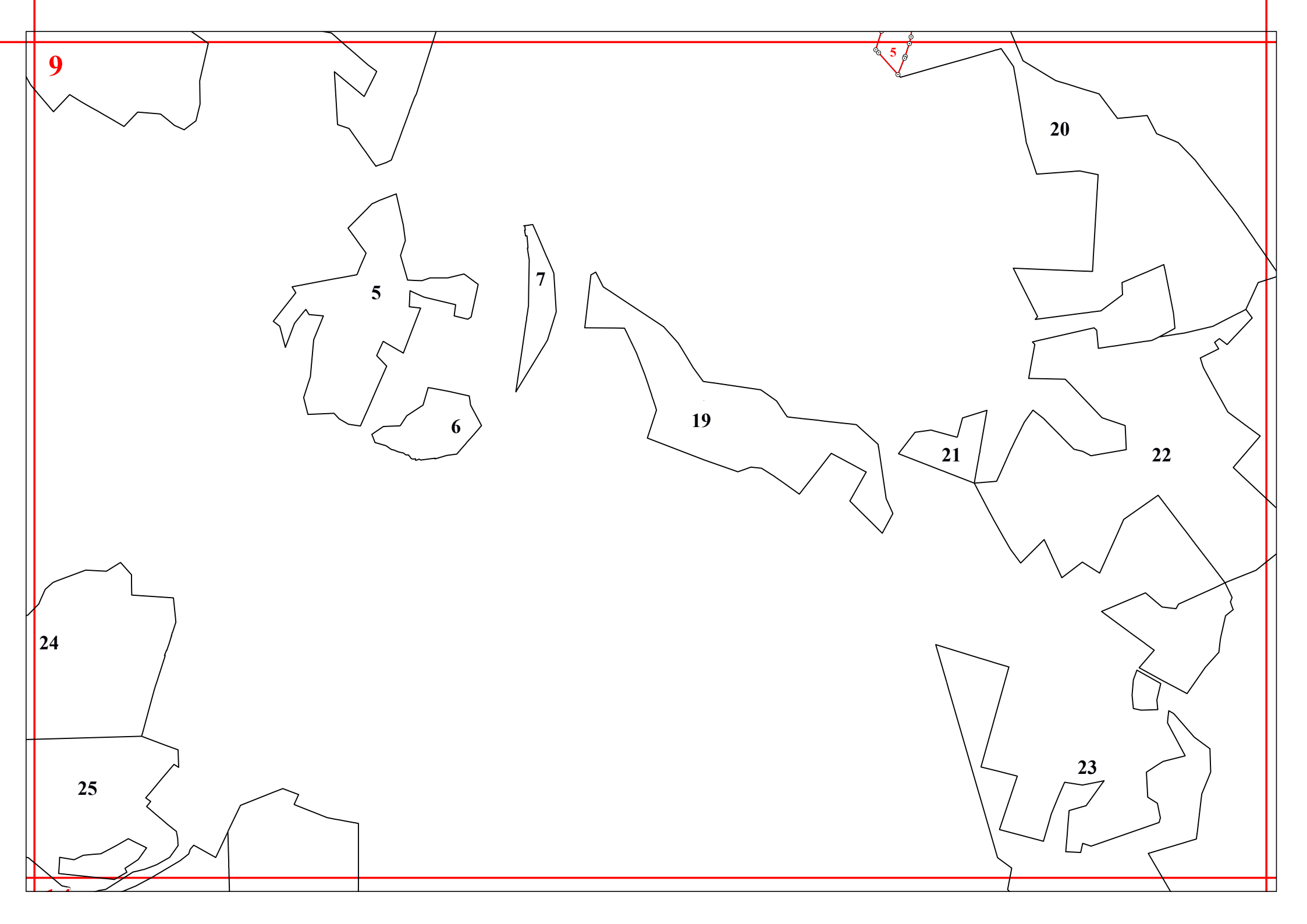
7

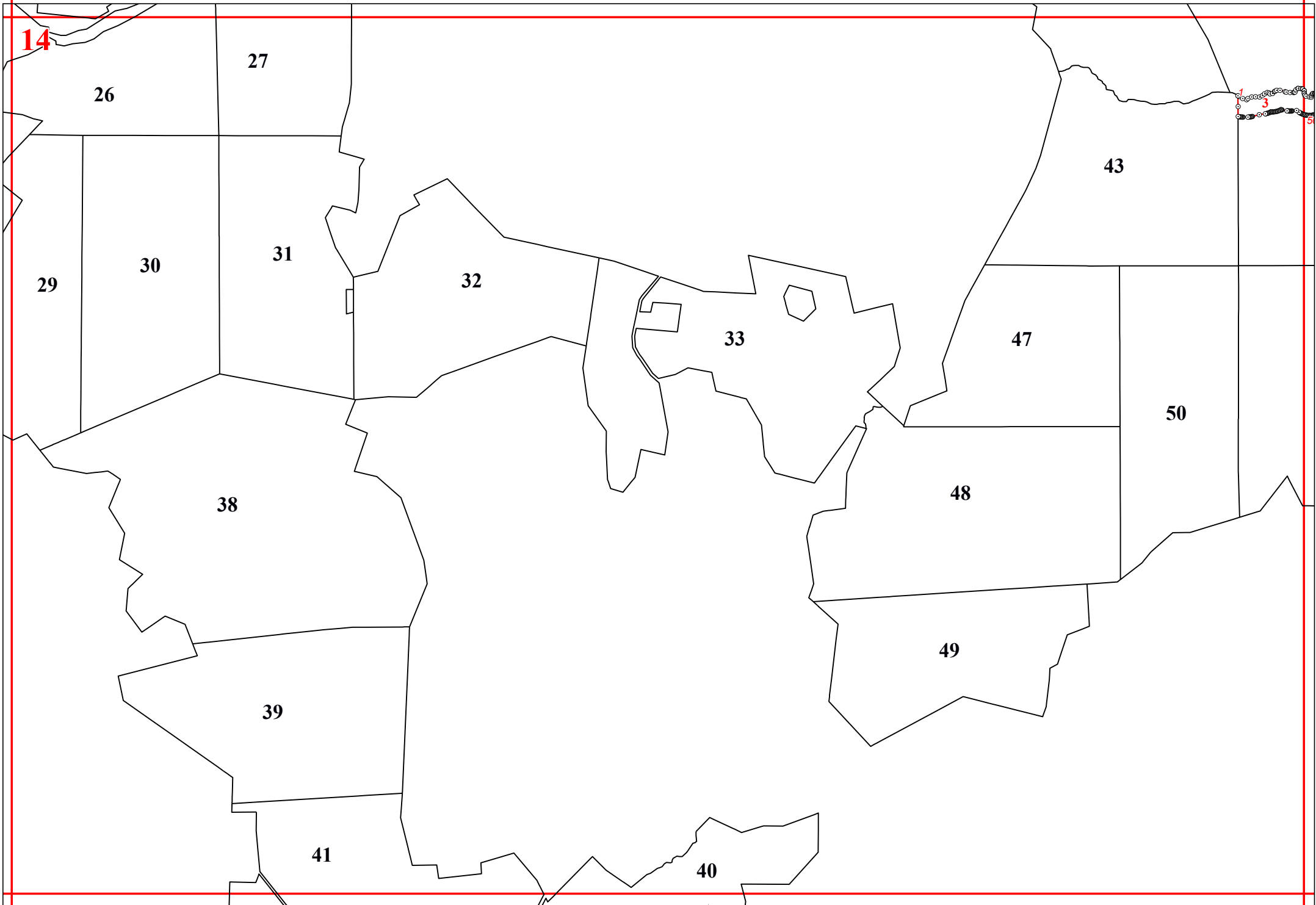
19

20
21
22

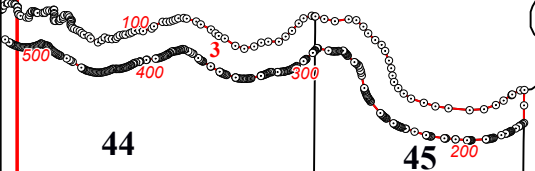
24
25

23





15



44

45

46

51

52

53

59

61

62

63

60

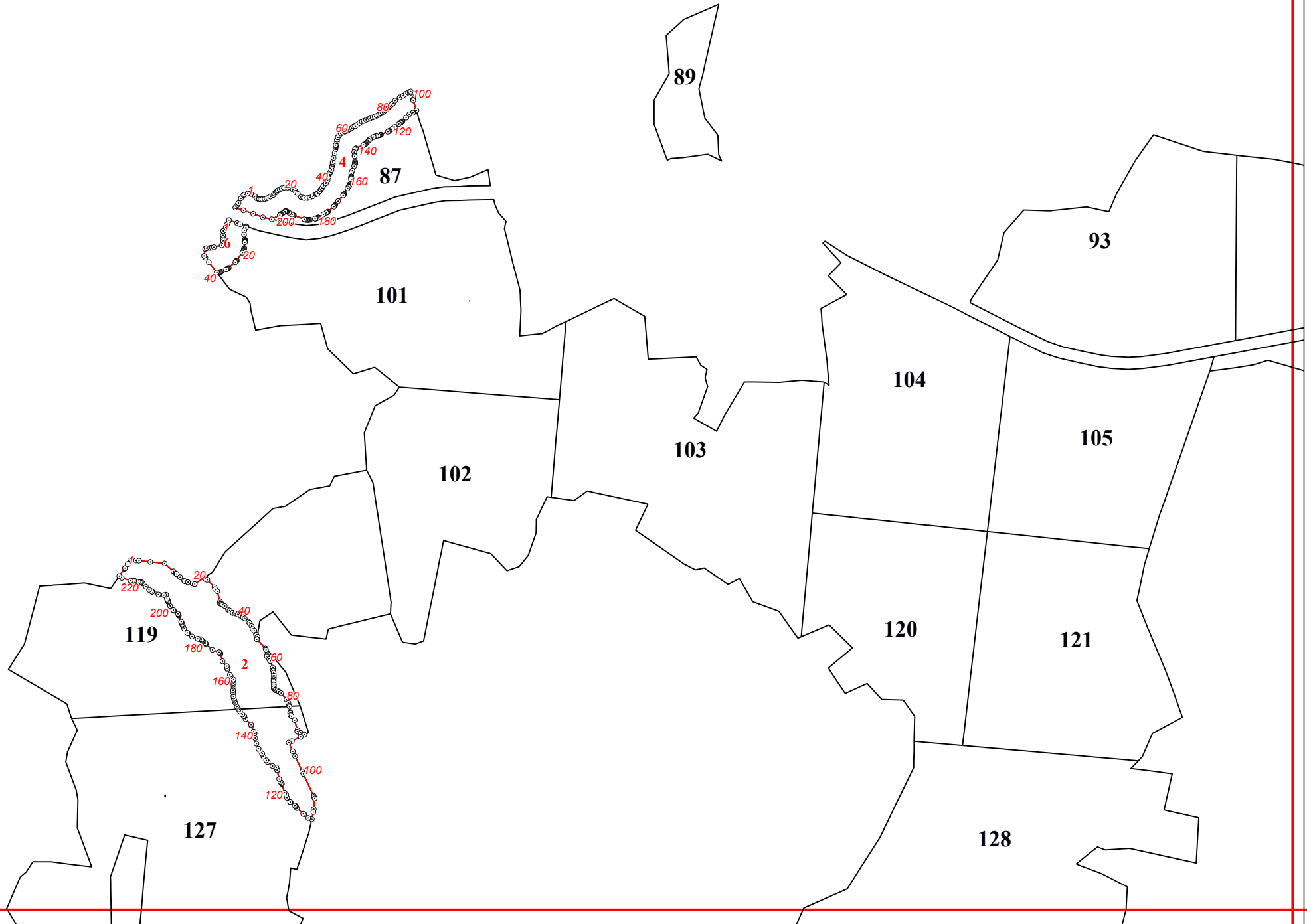
56

64

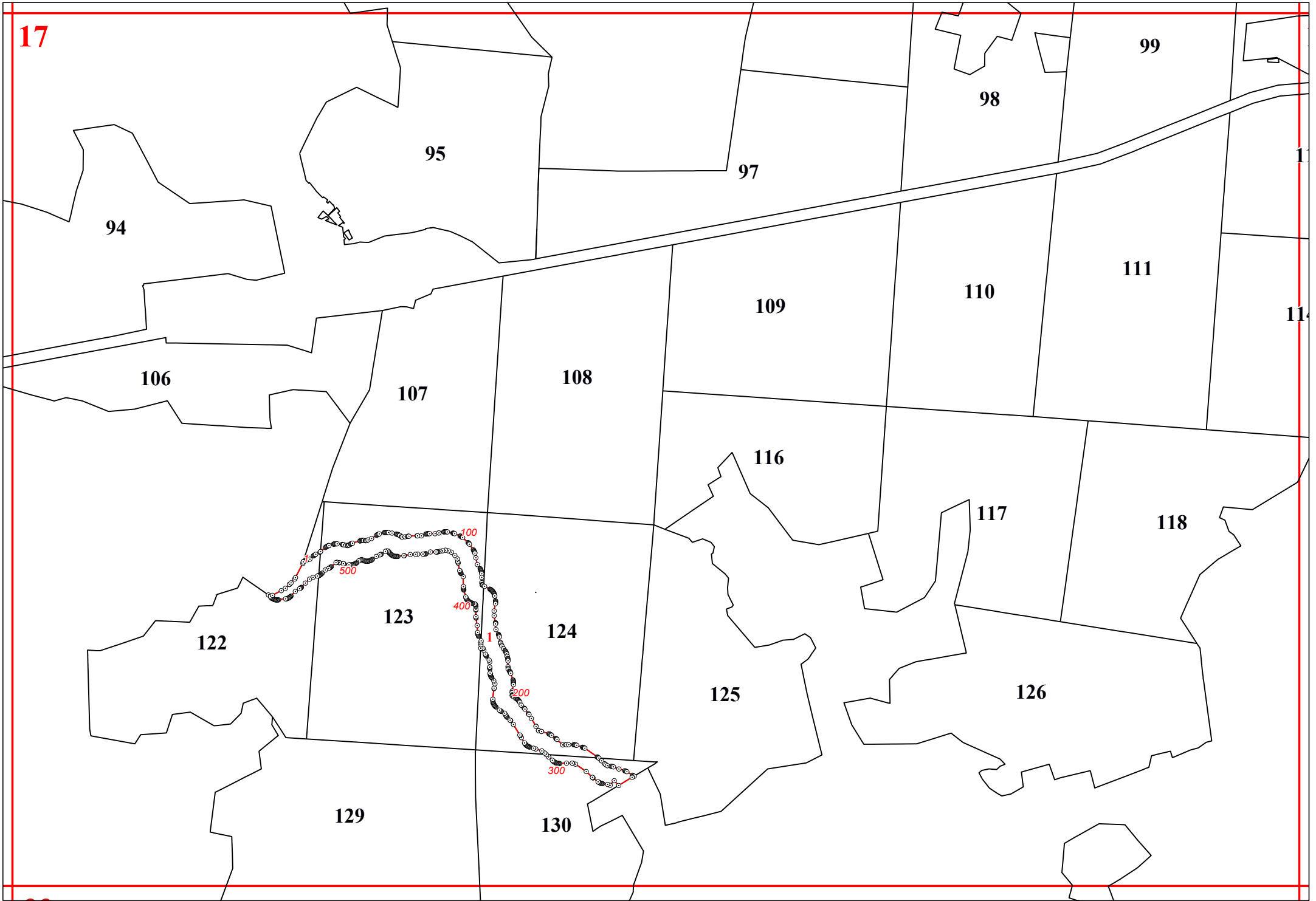
57

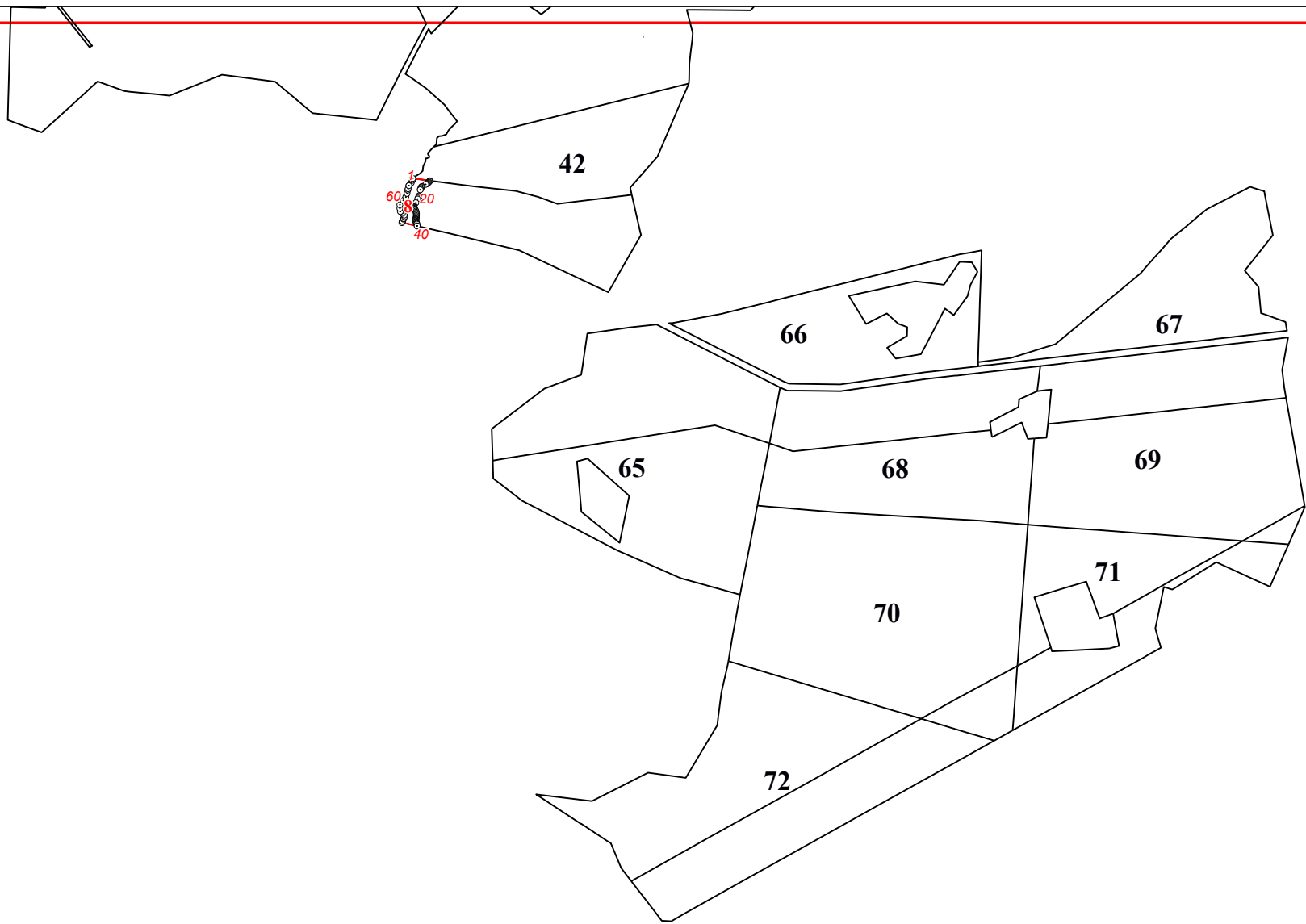
58

55



17





21

