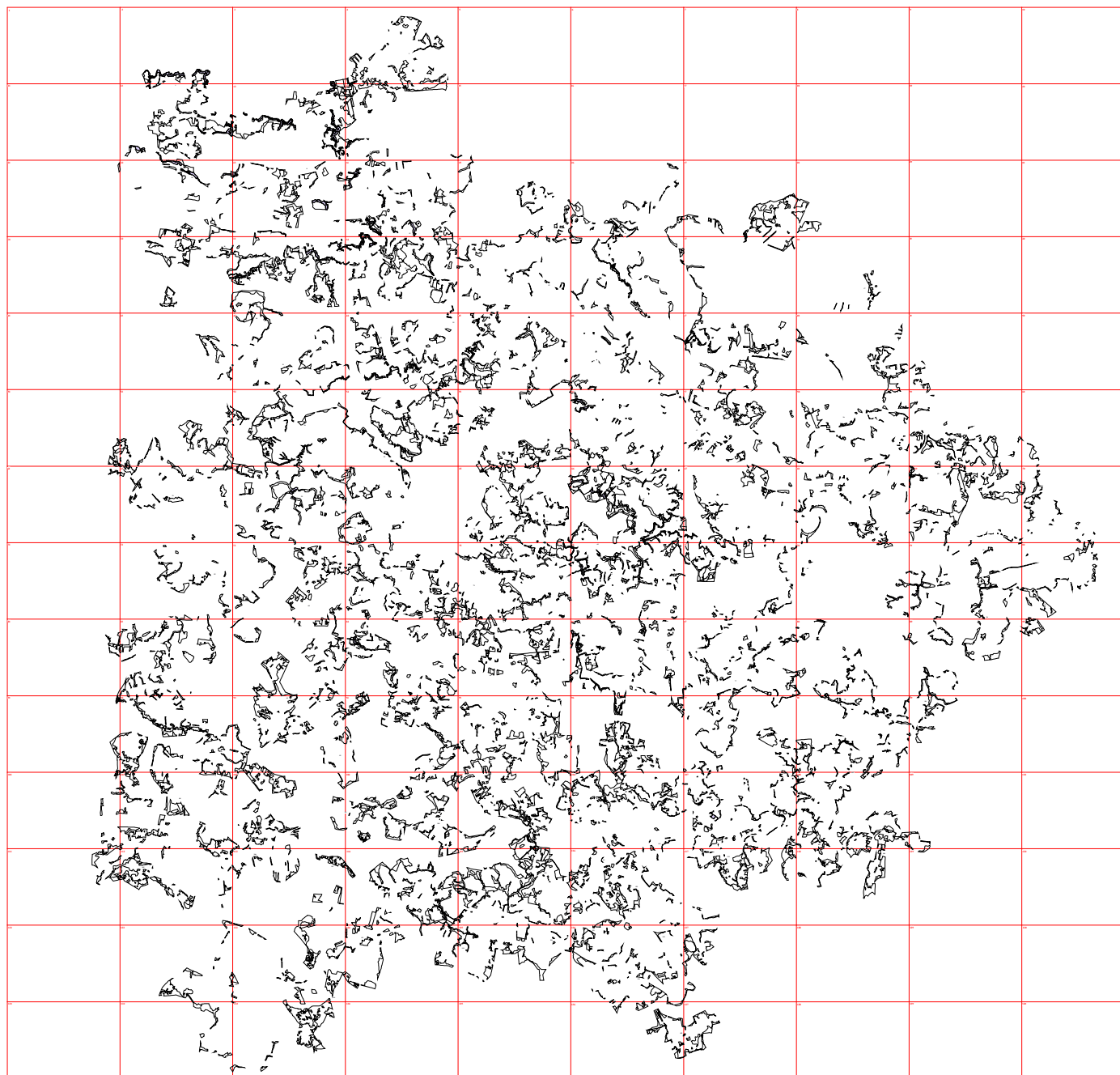
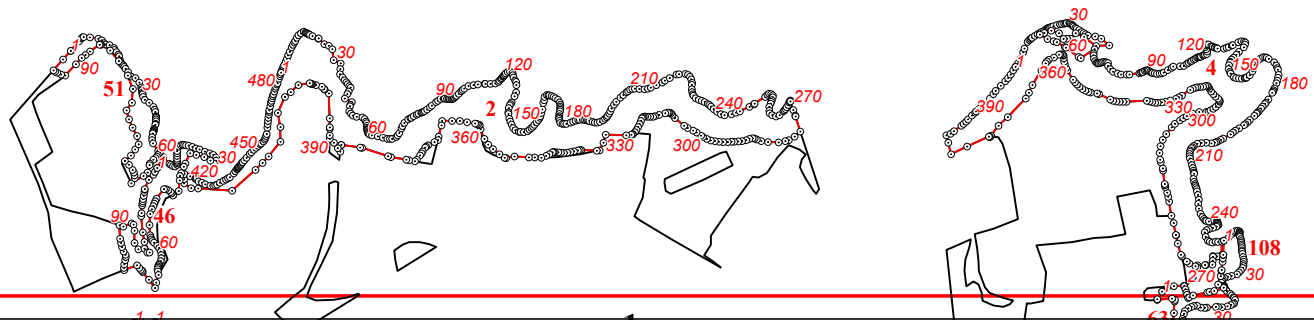
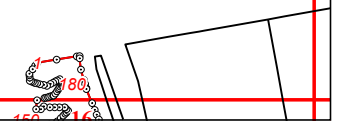


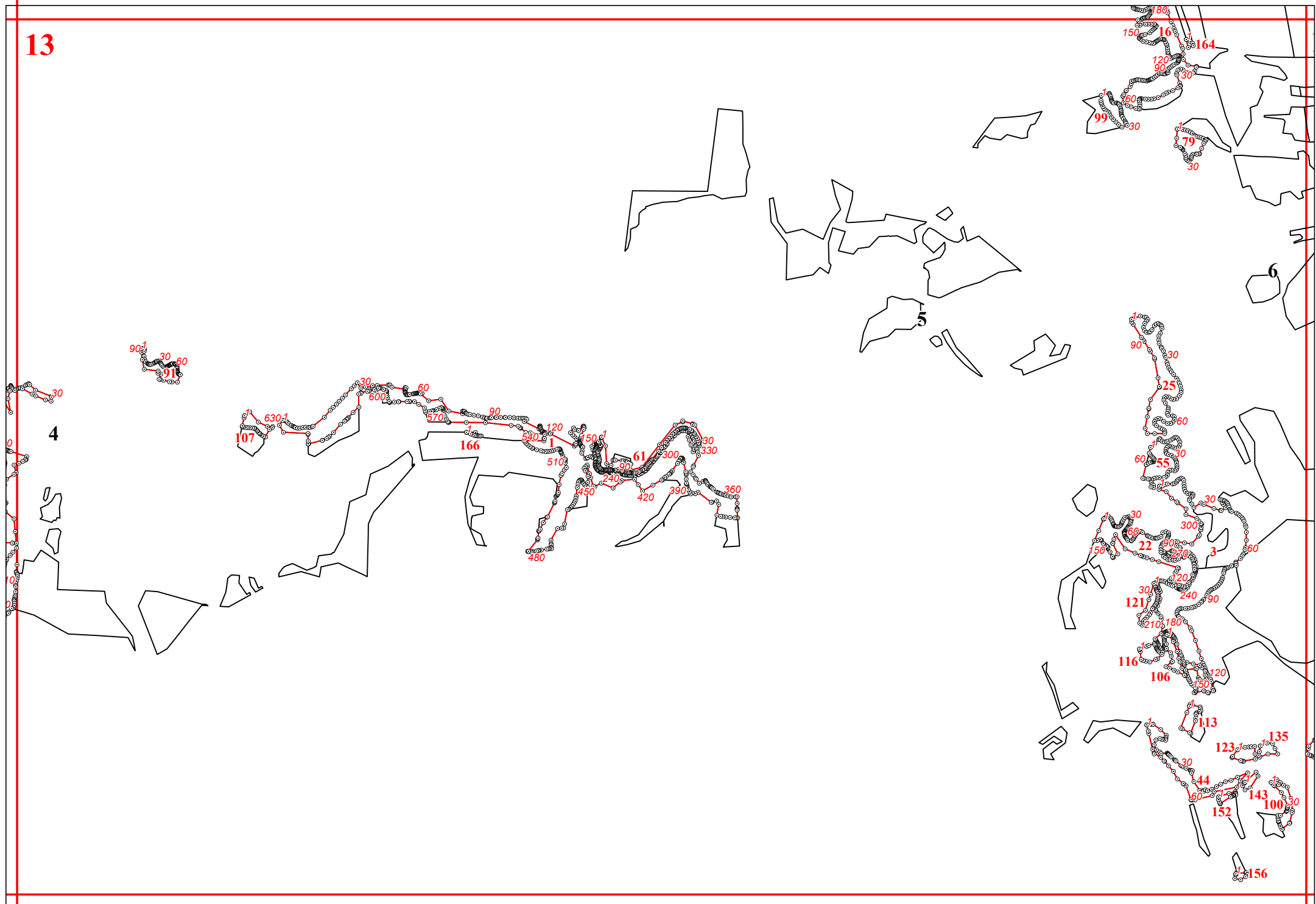
**Графическое описание местоположения границ земель, на которых располагаются леса,
расположенные в водоохранных зонах,
на территории Бородинского сельского участкового лесничества Бородинского лесничества
Московской области**

Приложение № 8 к приказу Рослесхоза
от 28.02.2023 № 271









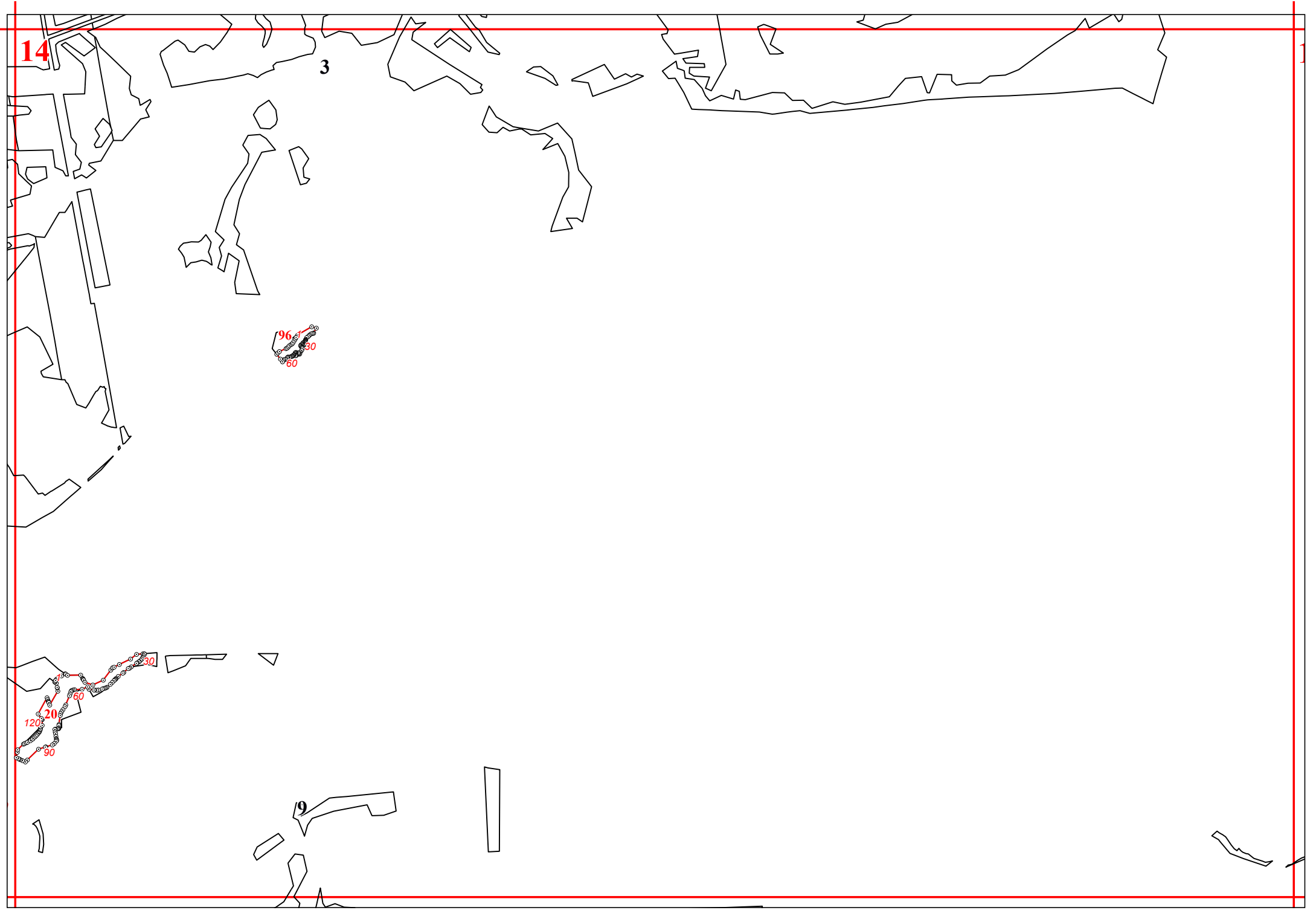
14

3

96
30
60

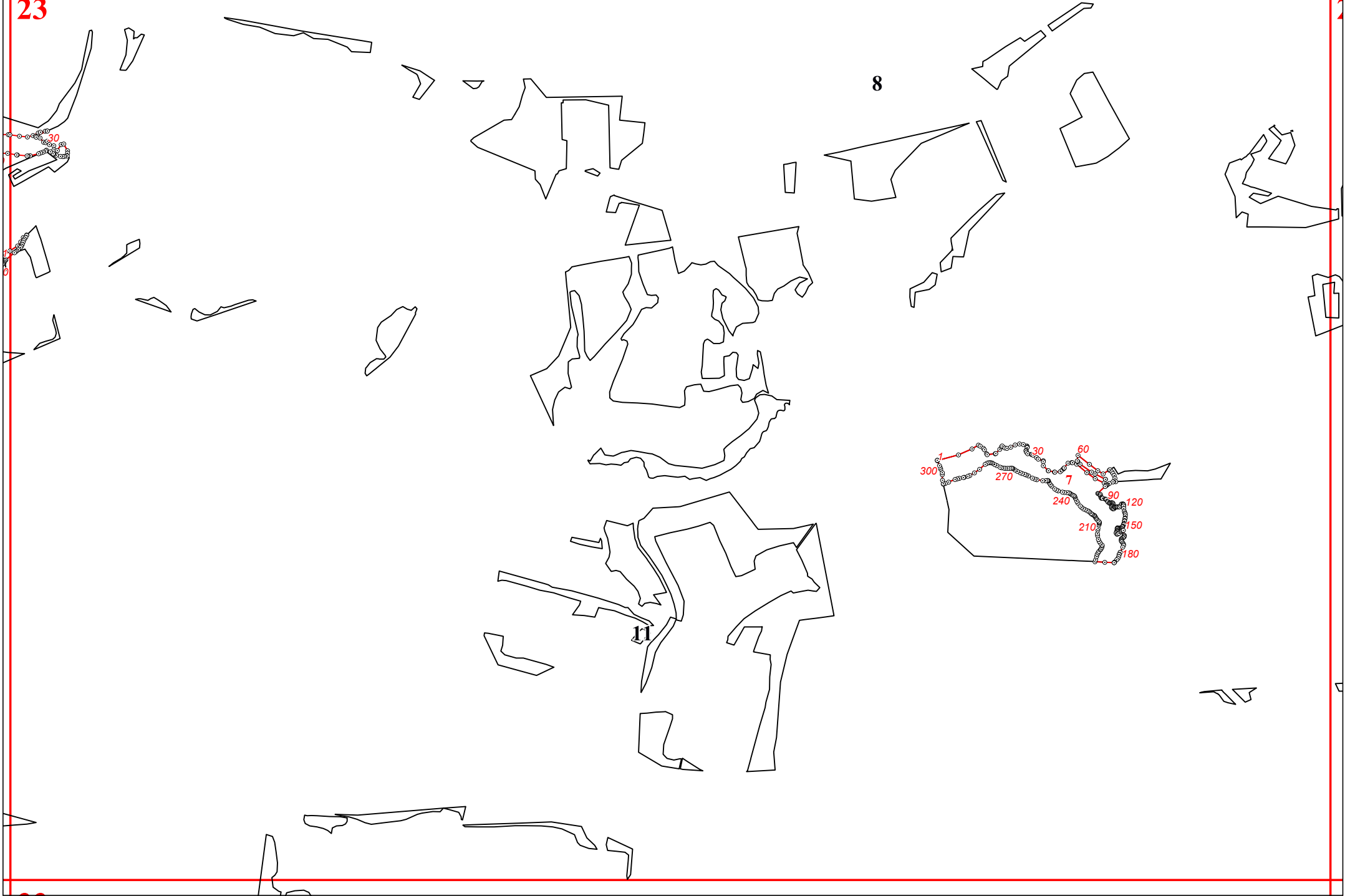
120
20
60
90
30

9



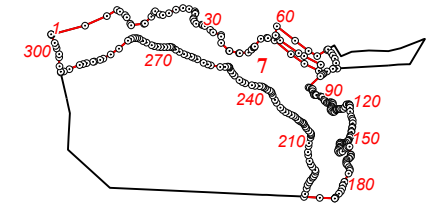


23

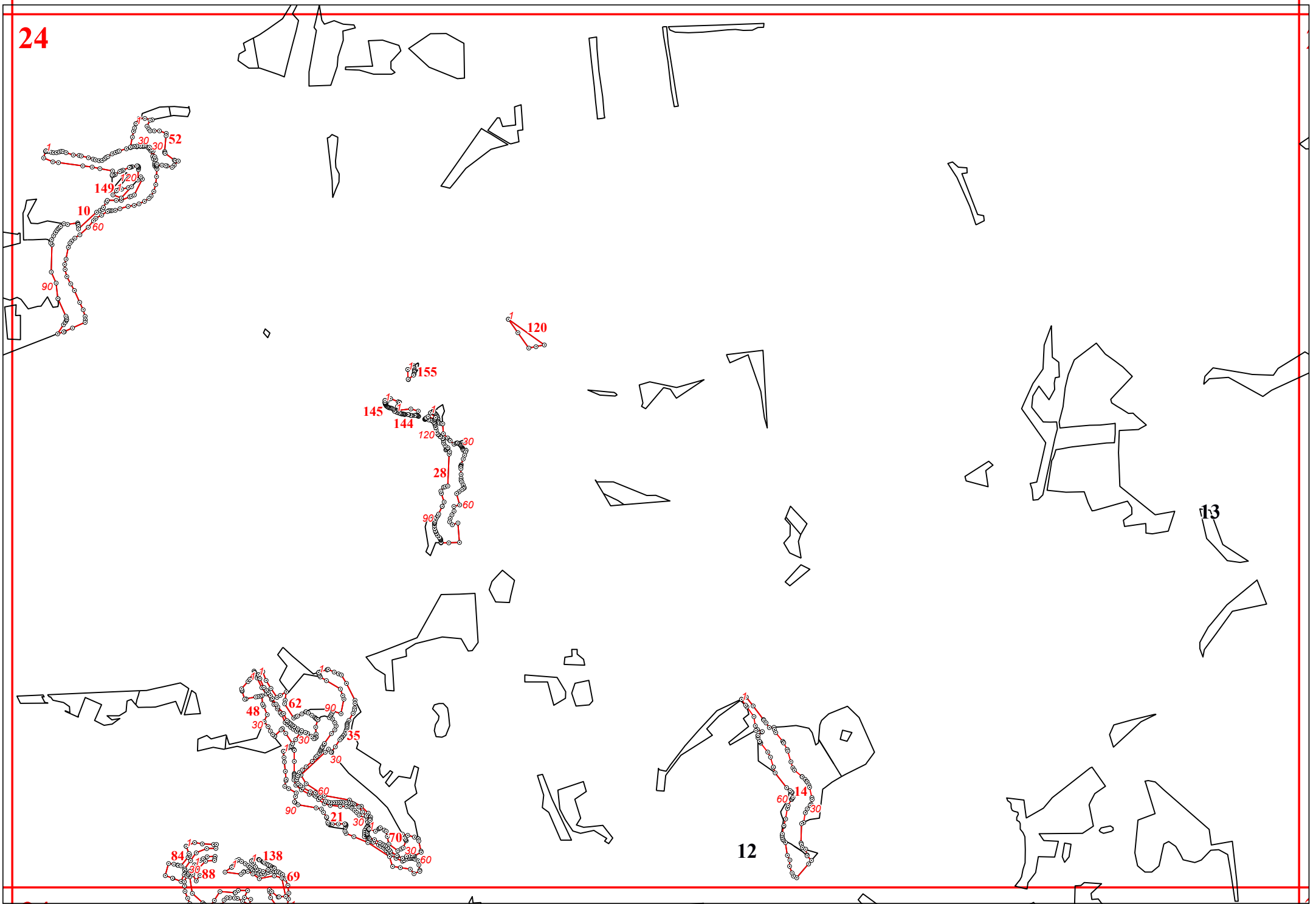


8

11



24





20

21

19

34

122

136

31

30

40

60

49

30

30

30

75

1

38

30

60

22



44

23

33

32

56
78
30

32
30

24
30
60
169
71
30

93
1
104

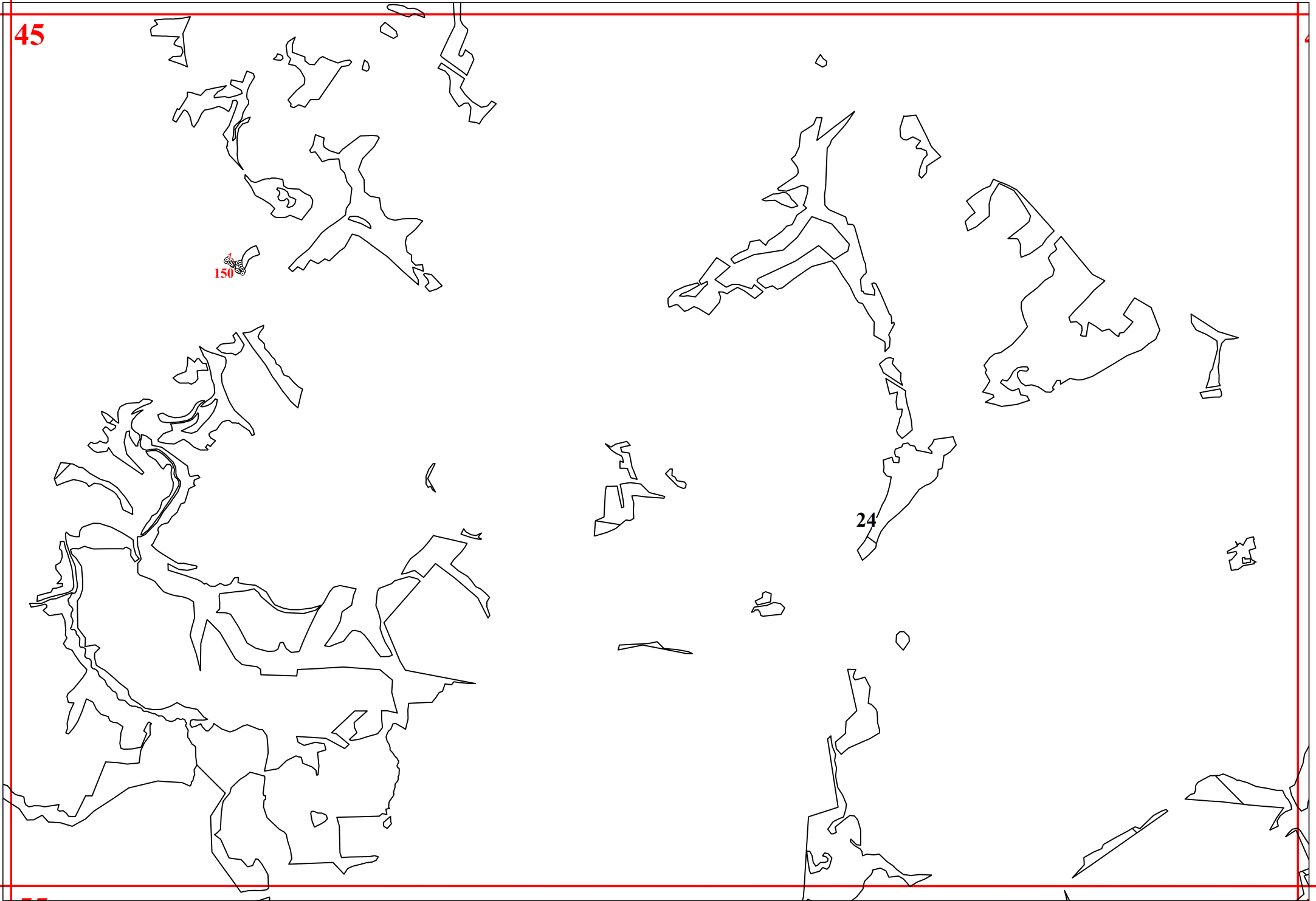
37

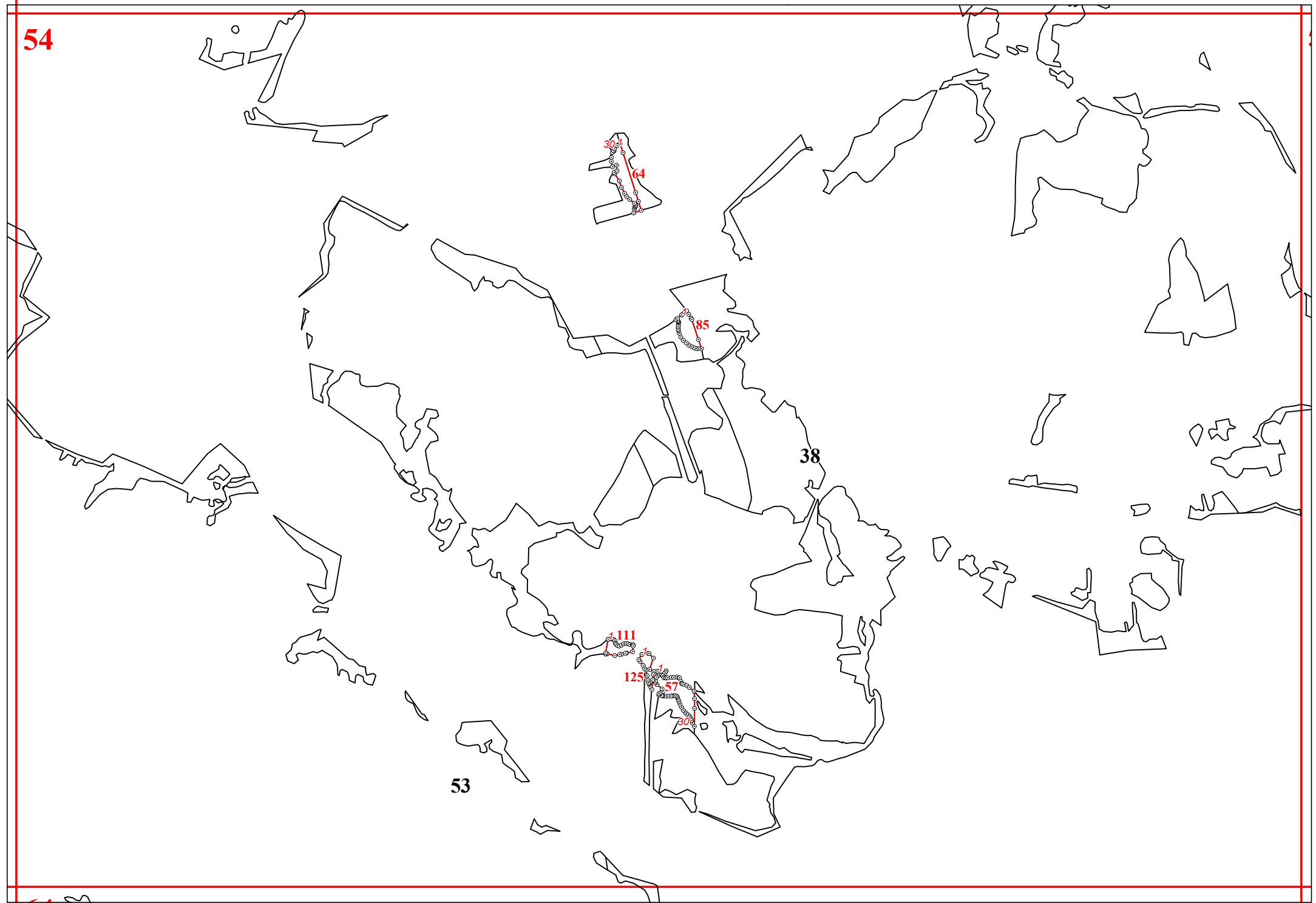


45

150

24



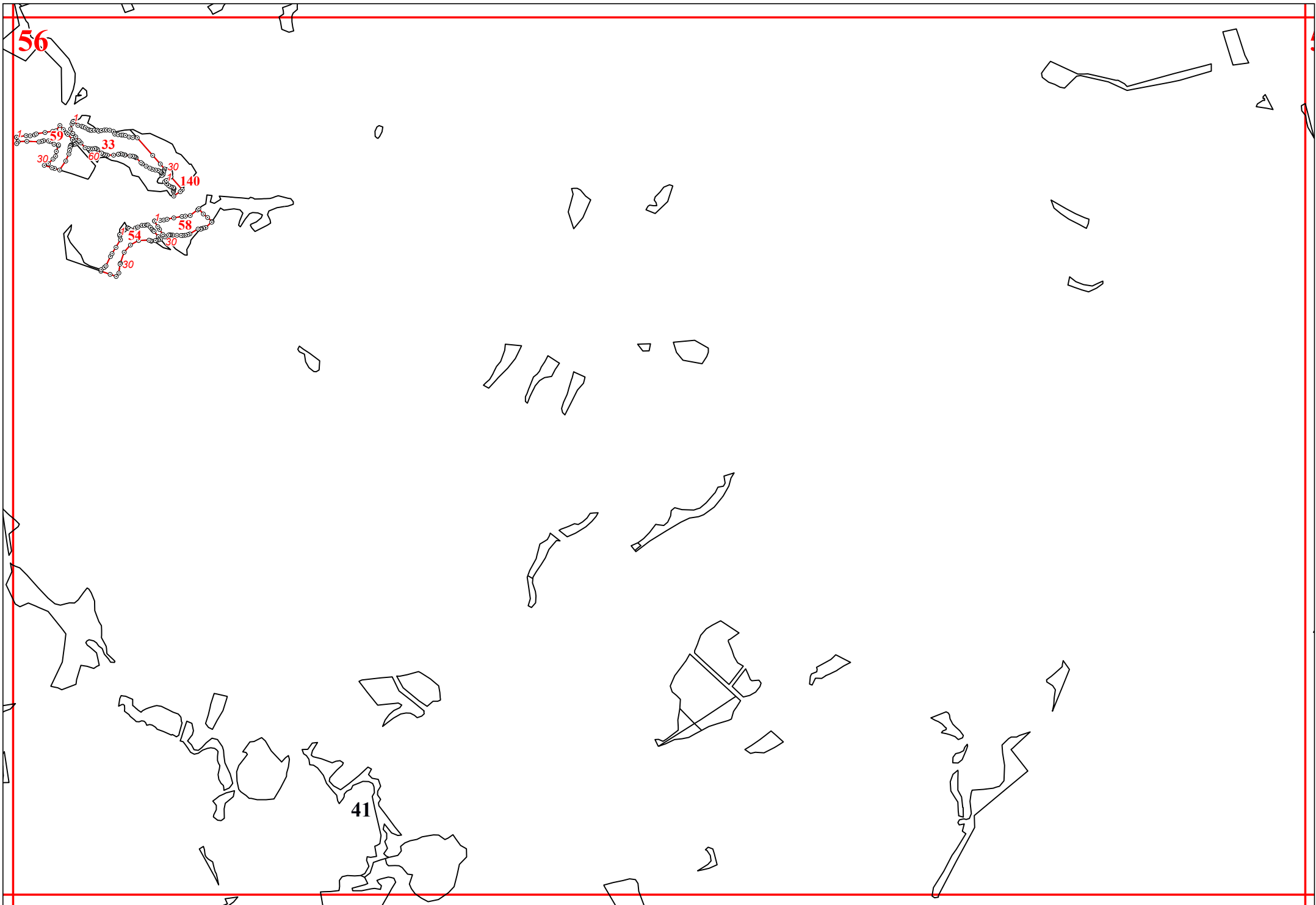


55

118/1103

39





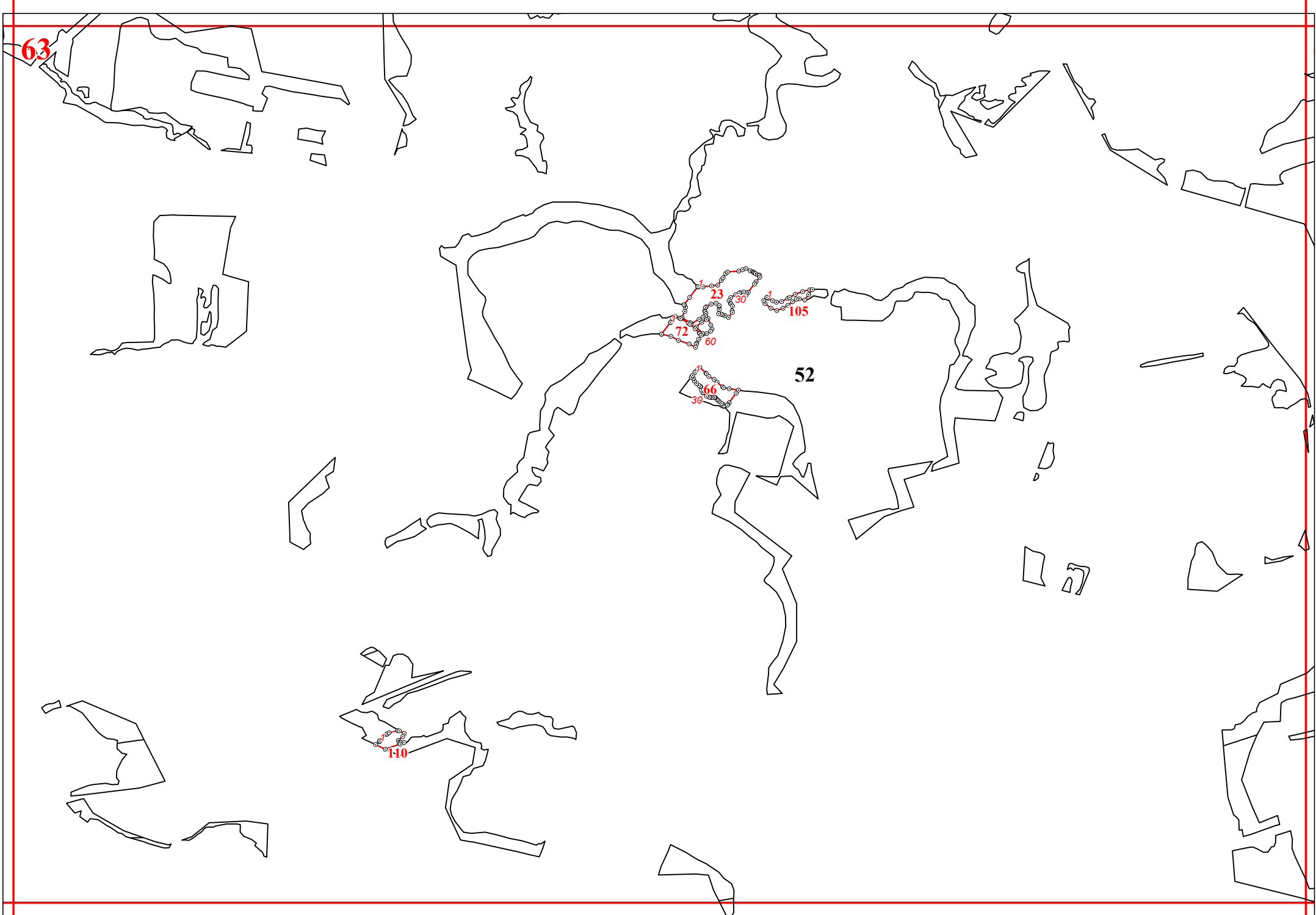
57

43

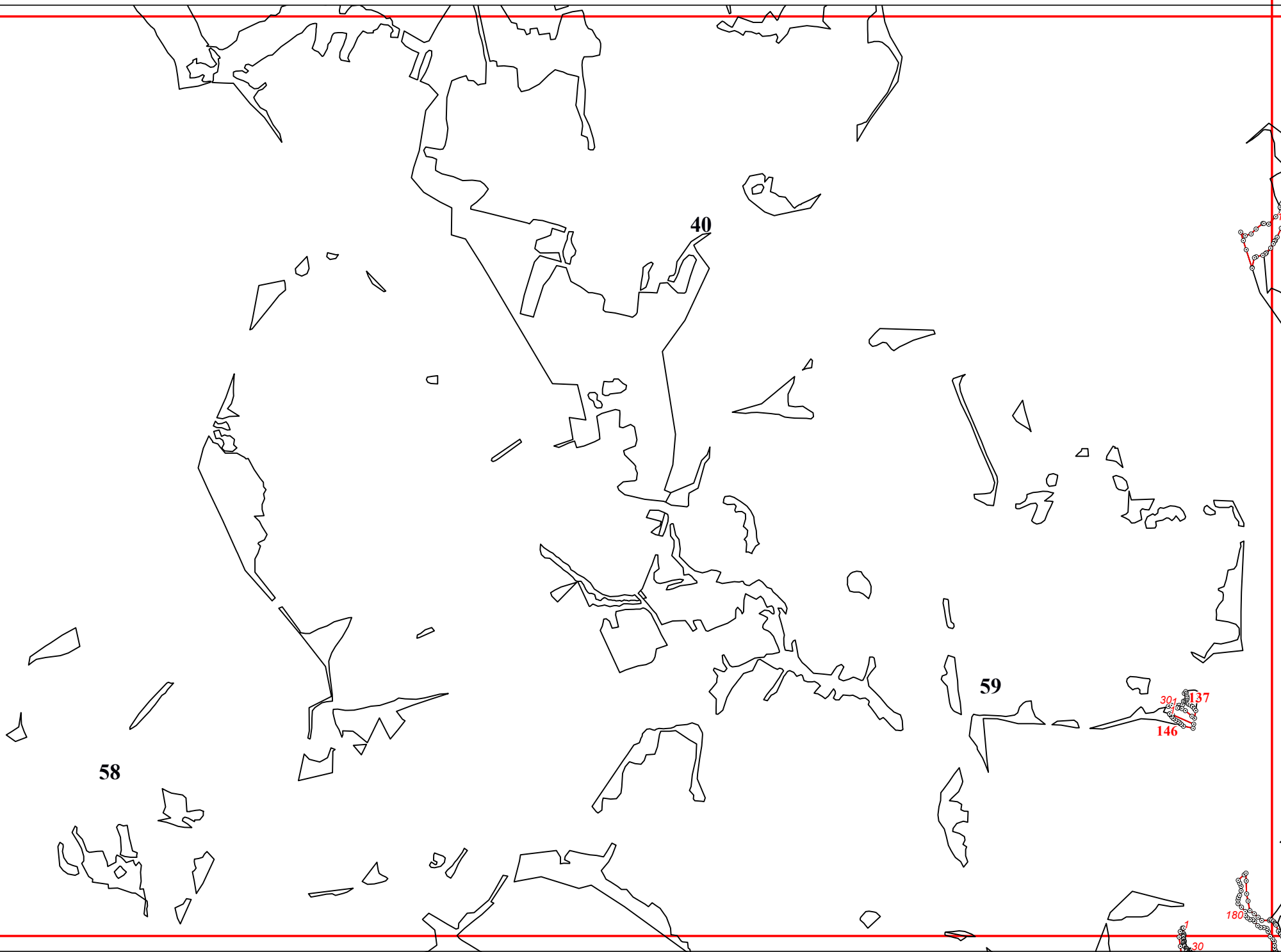
119

161
73

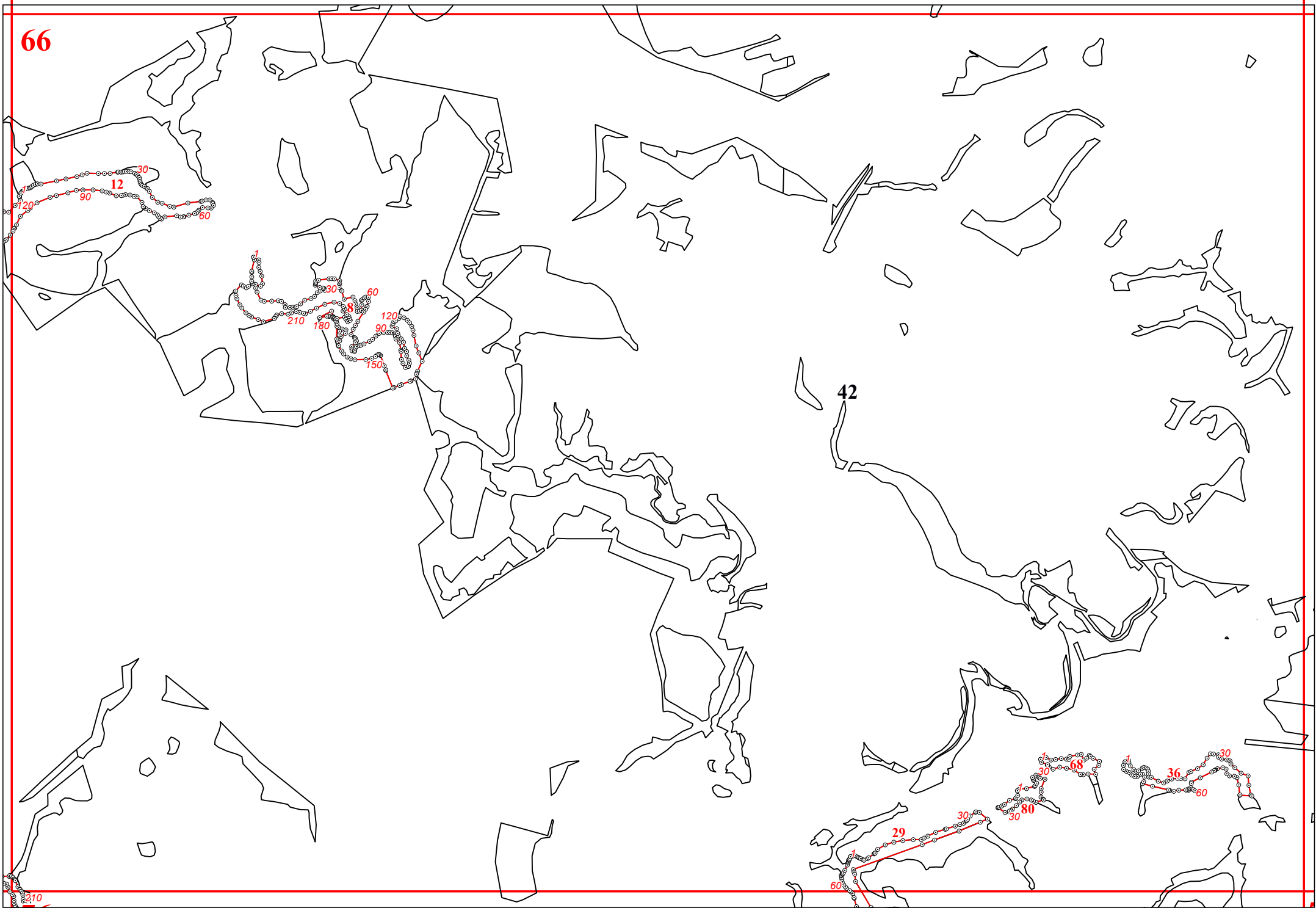




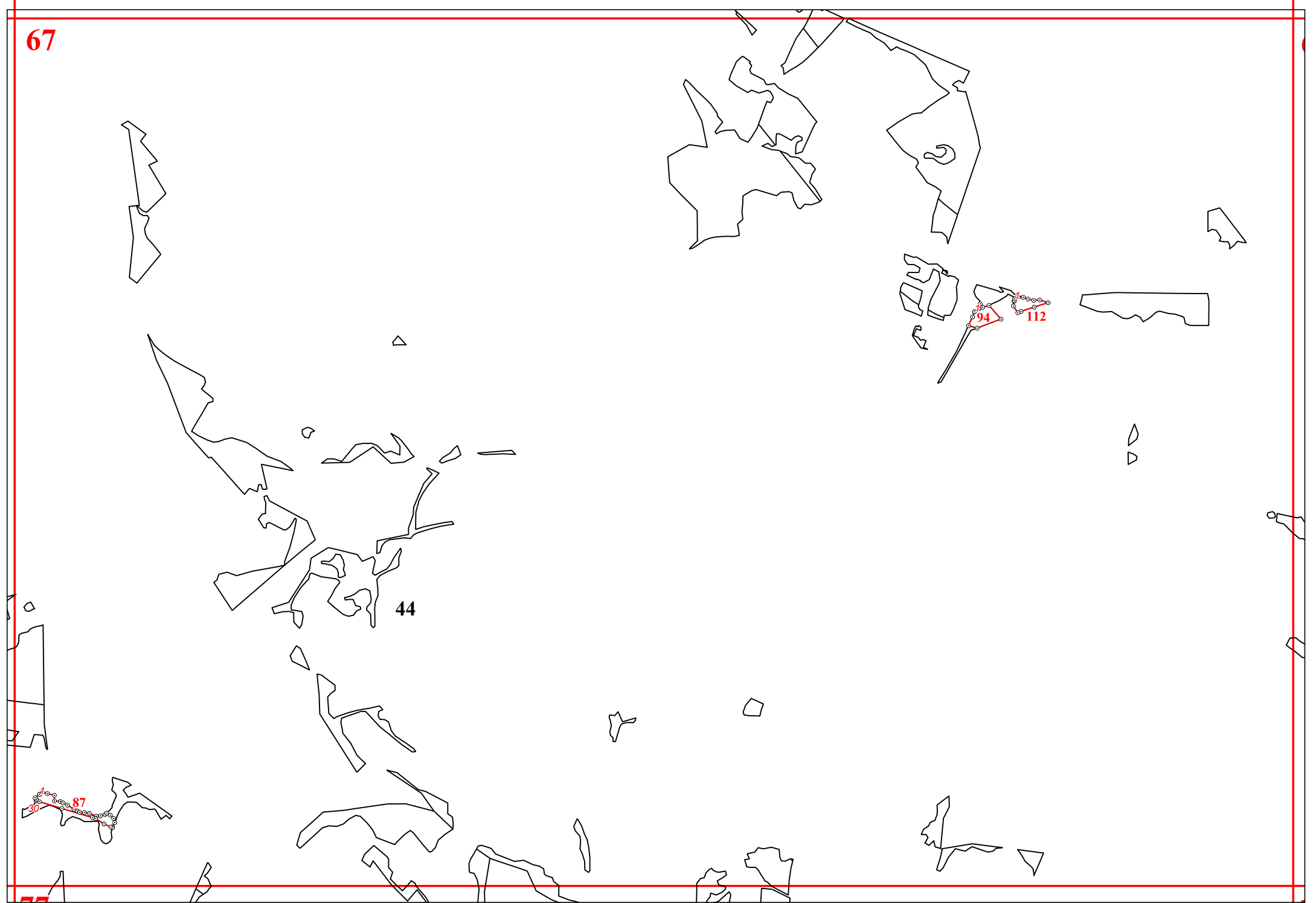
65



66



210



75



60

61

72

109

165

77

30

60

19

120

90

270

240

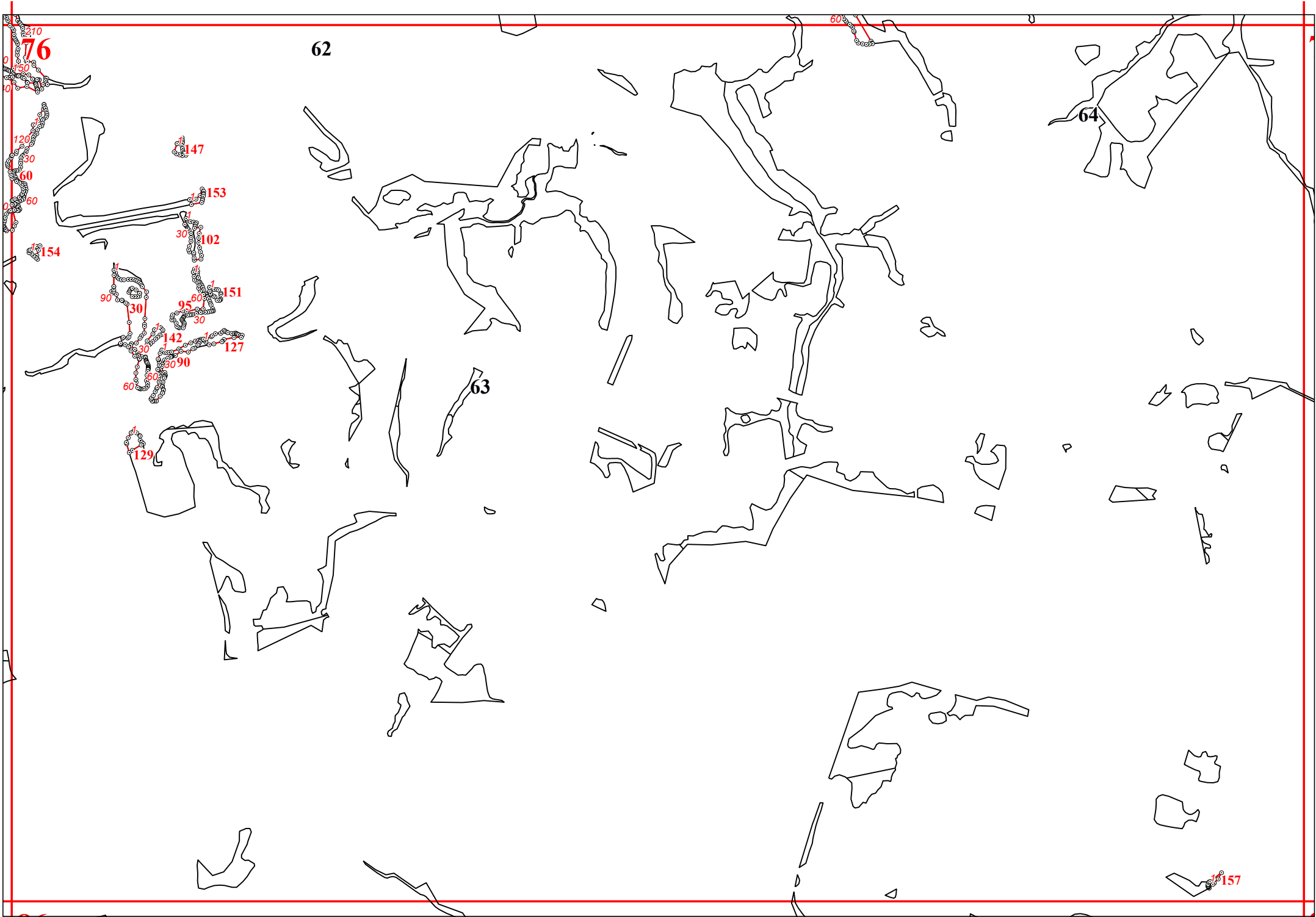
11

90

75

1

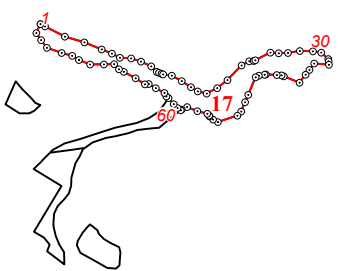
30



78

B

45



79

47

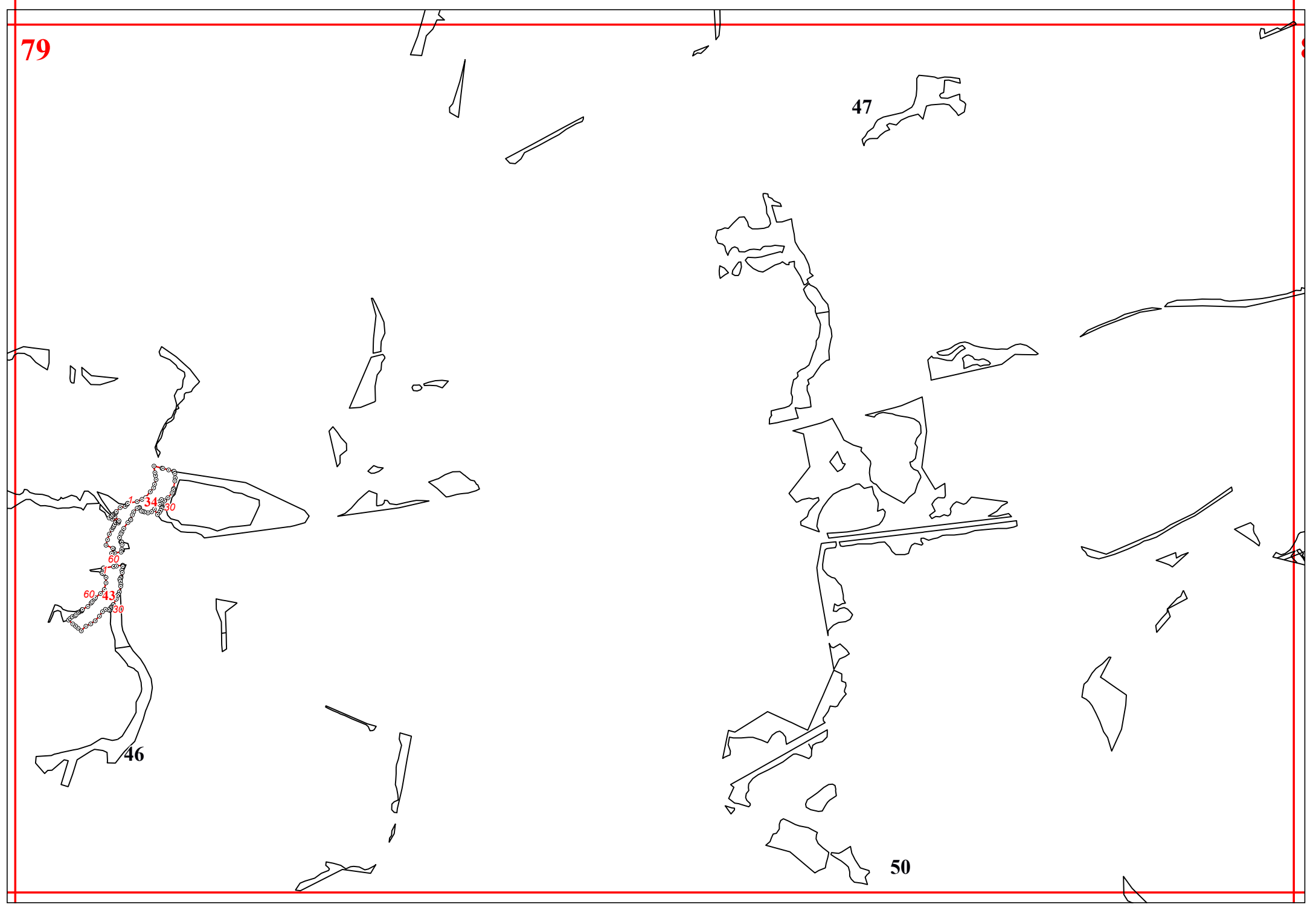
46

50

34 30

60 3

60 43 30



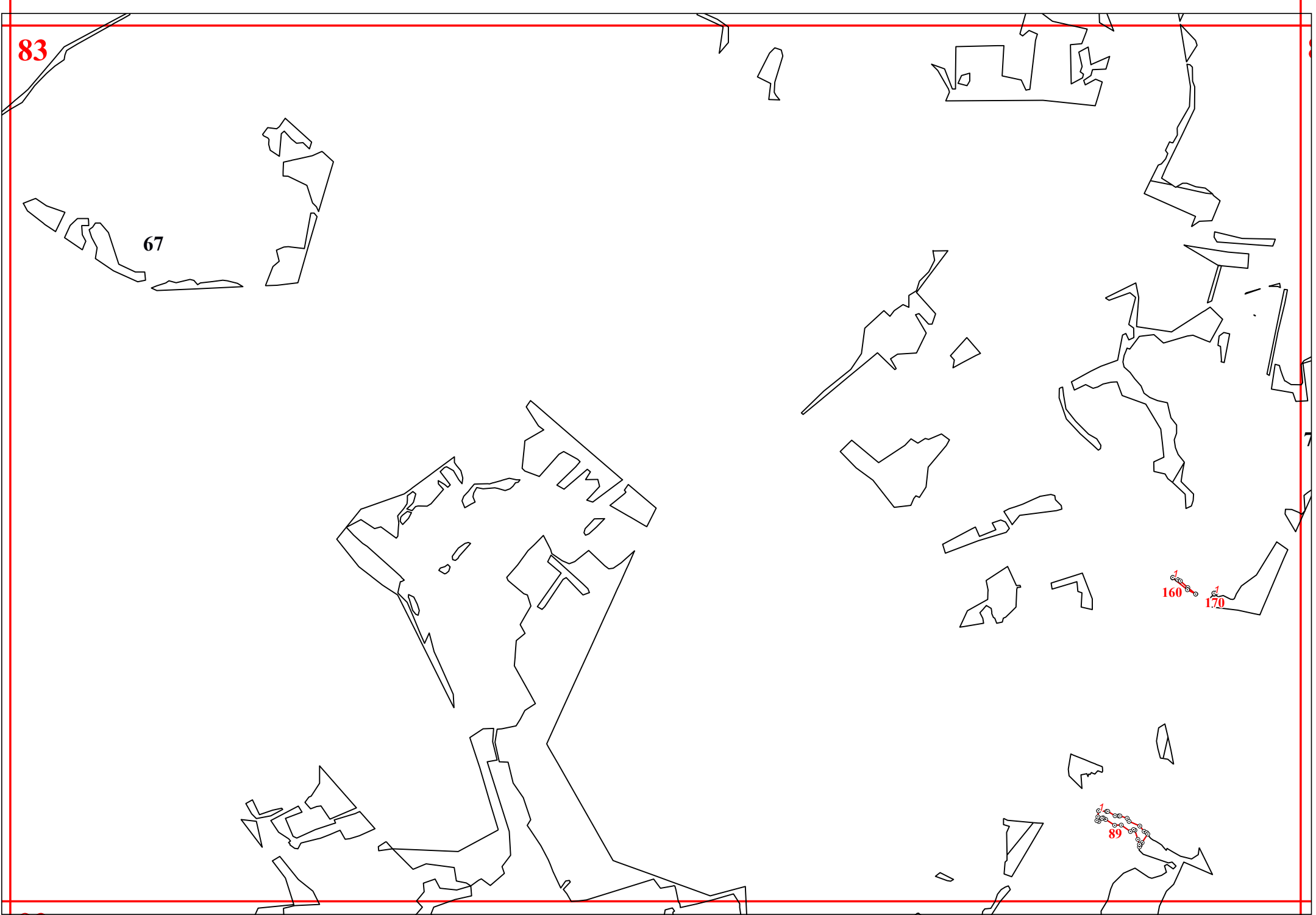
83

67

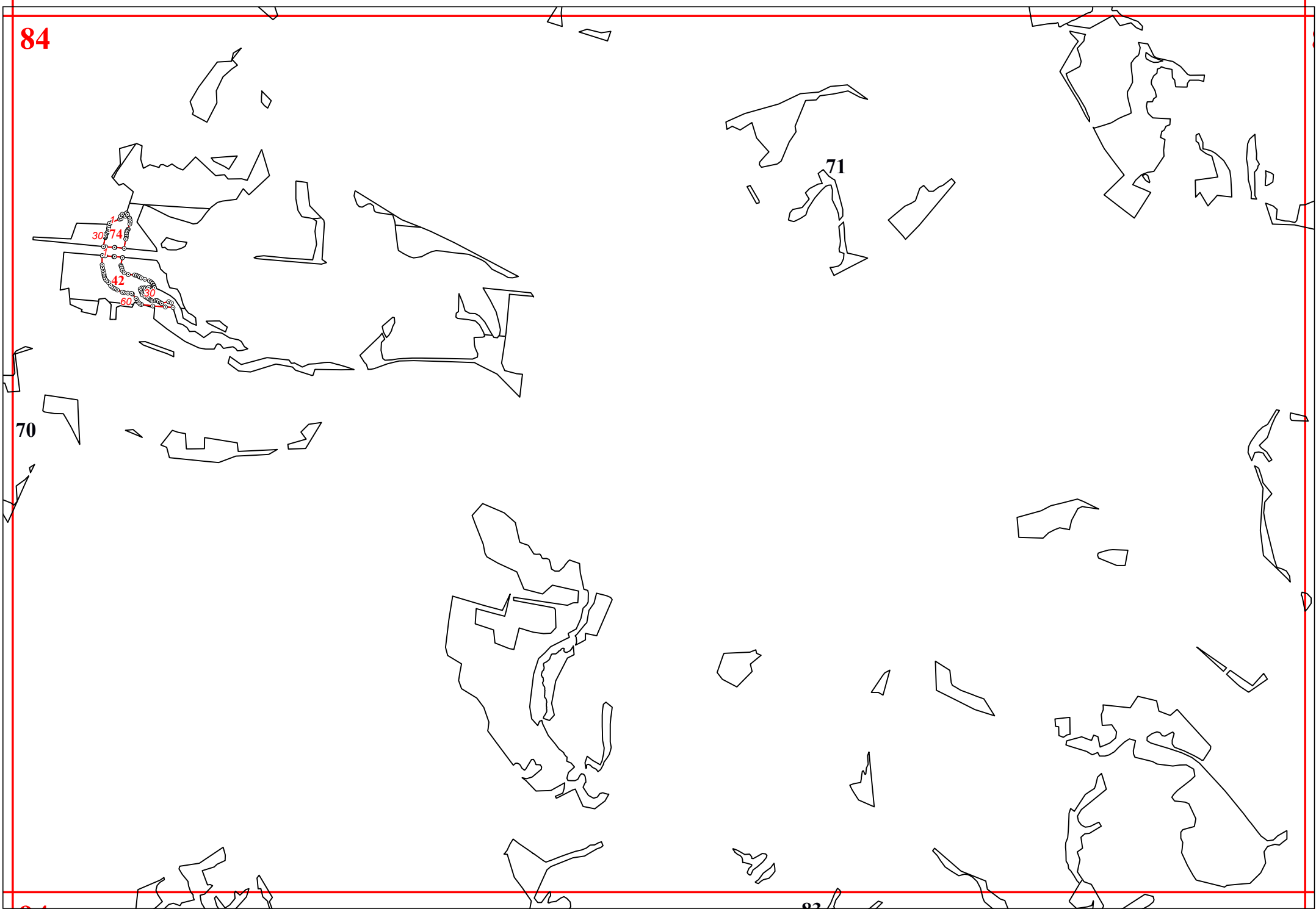
160

170

89



84



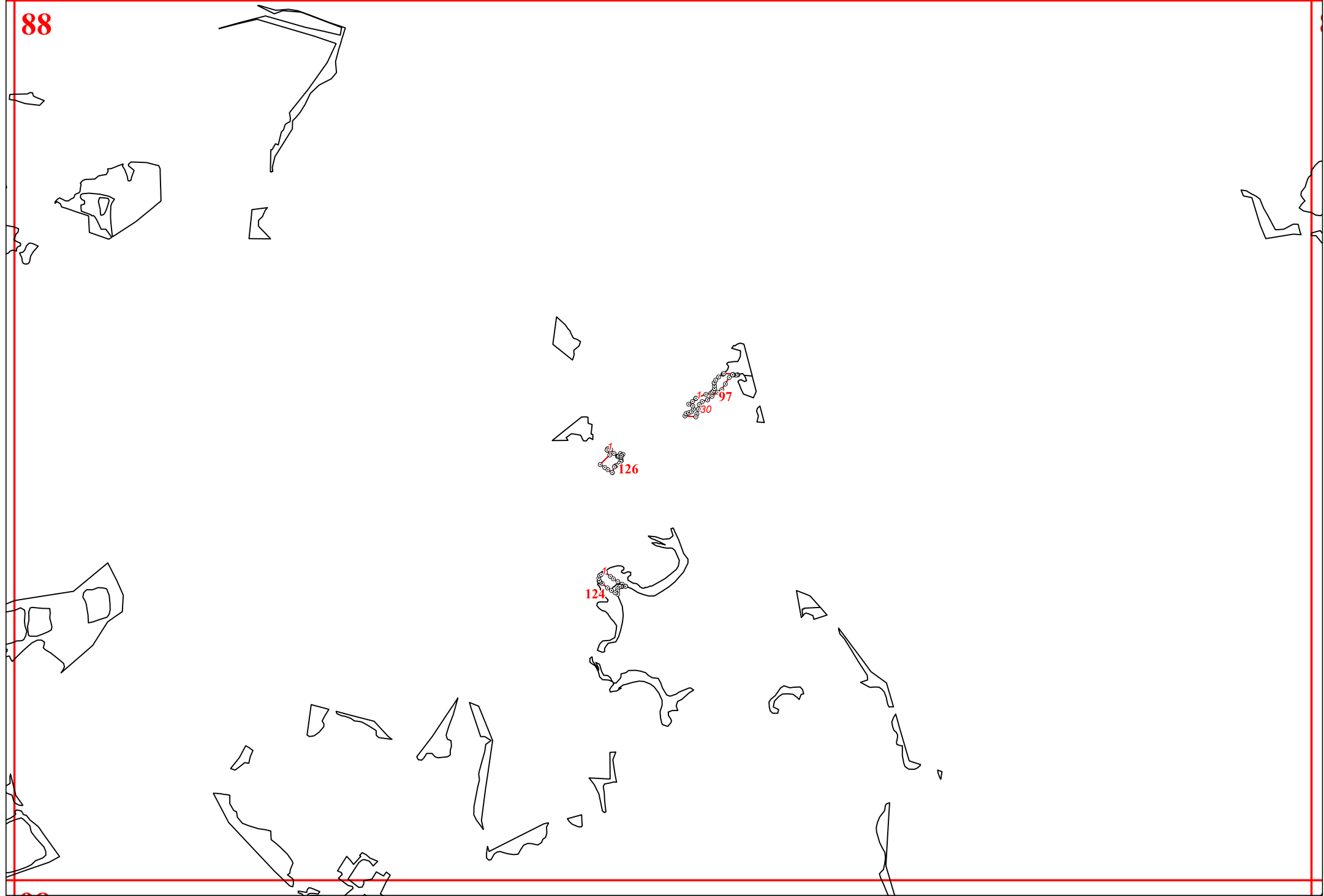
70

71

81

82





104

93

94

108

109

117

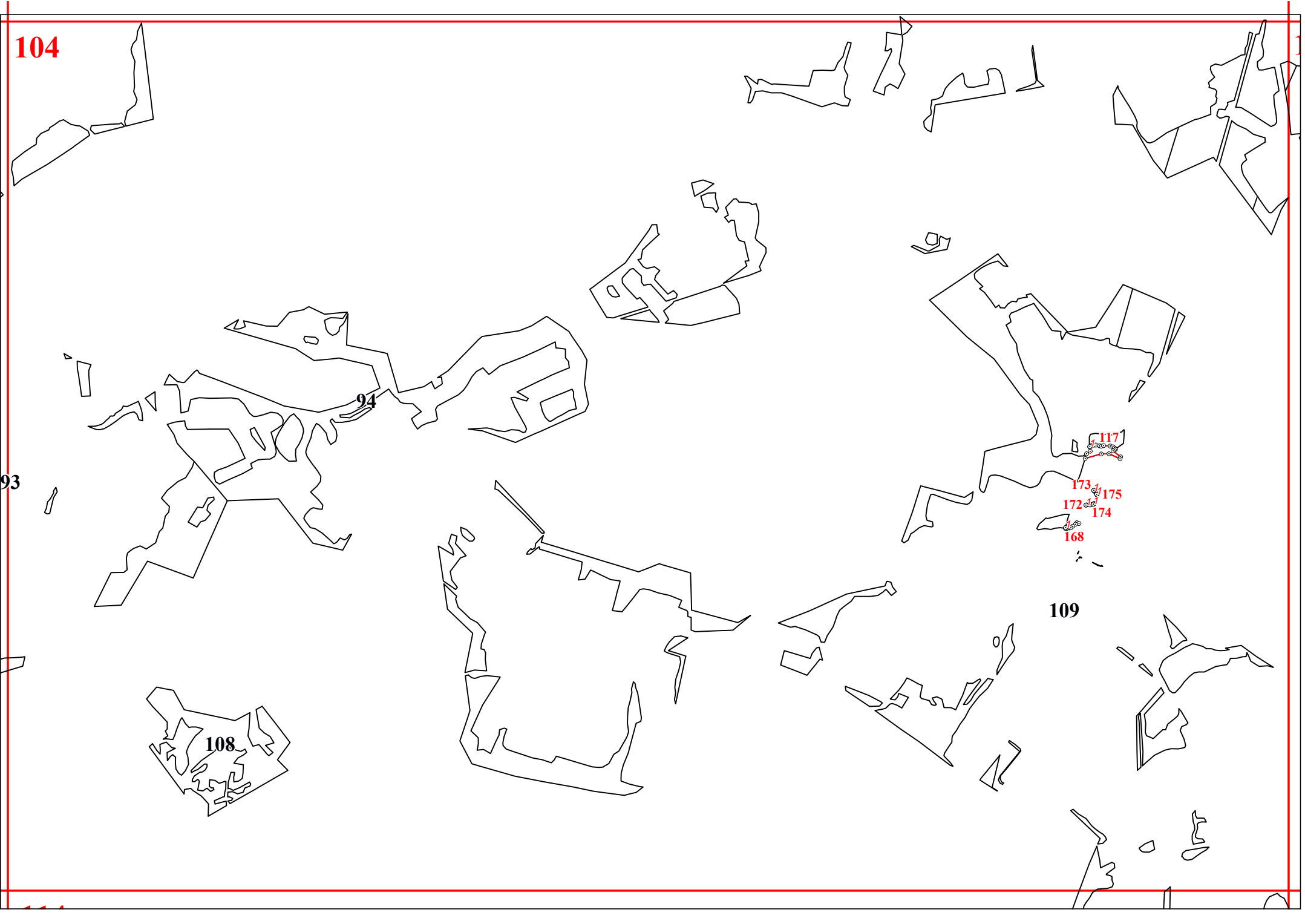
173

175

172

174

168



107

100

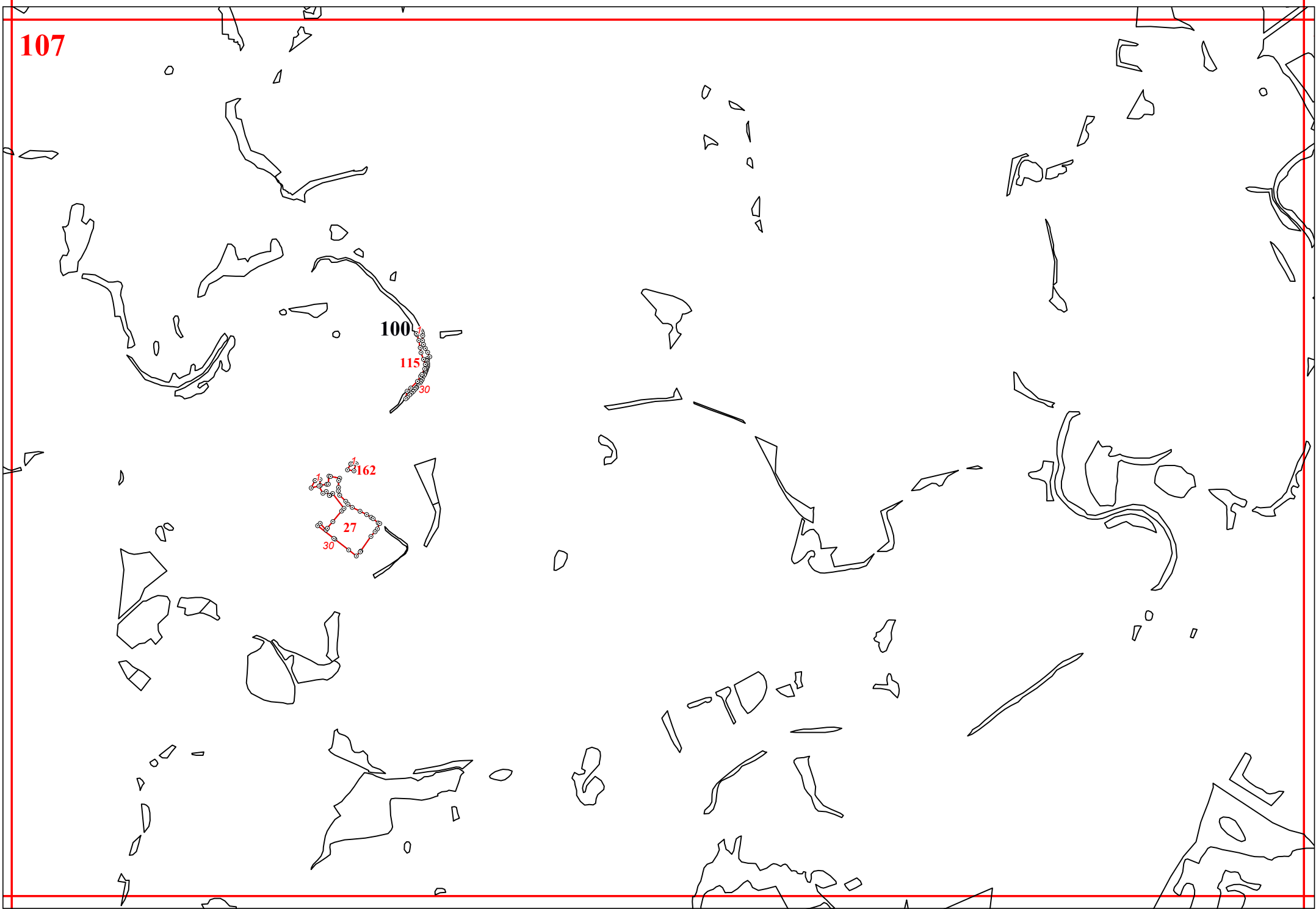
115

30

162

27

30





116

111

122

128

