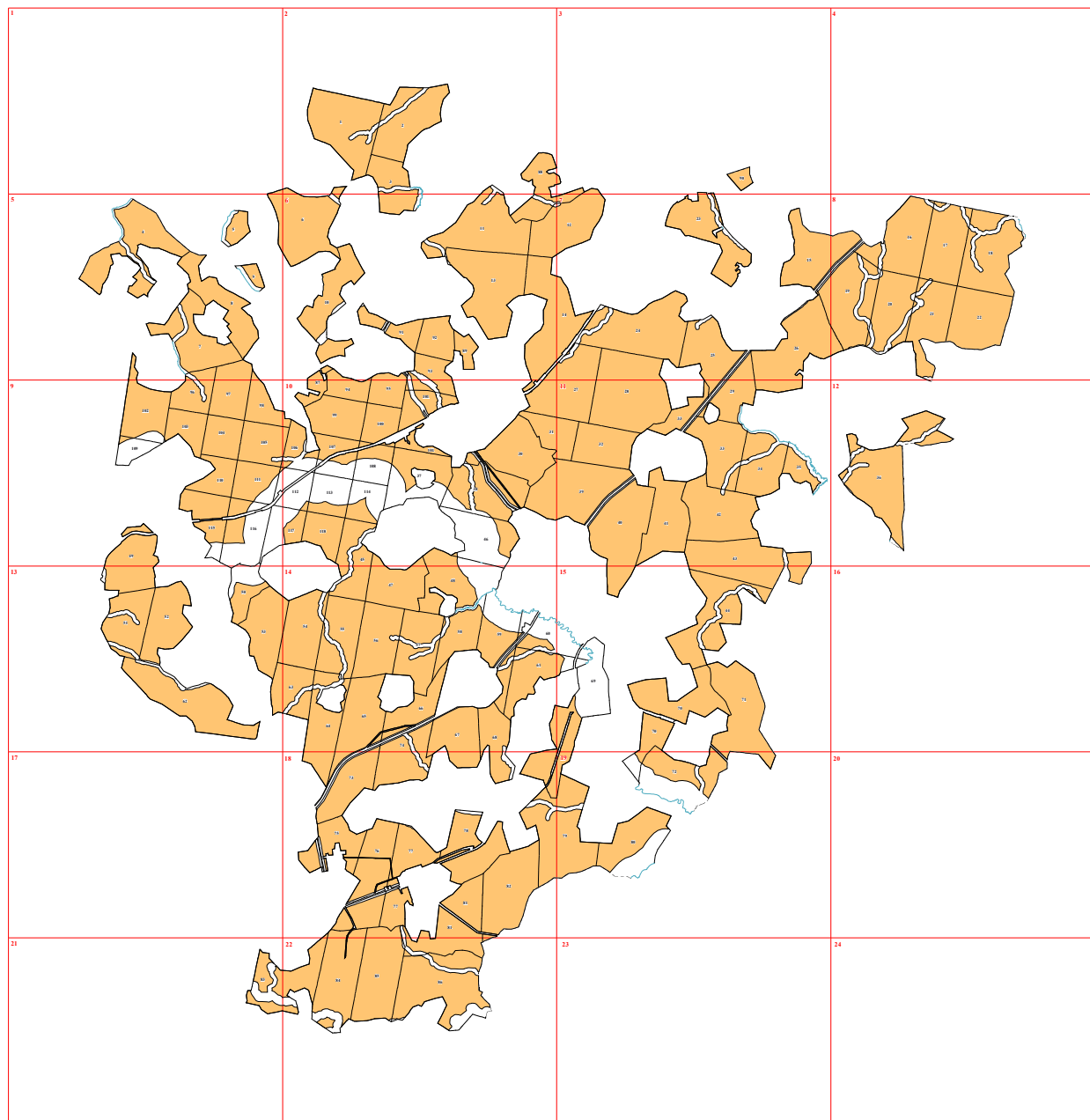
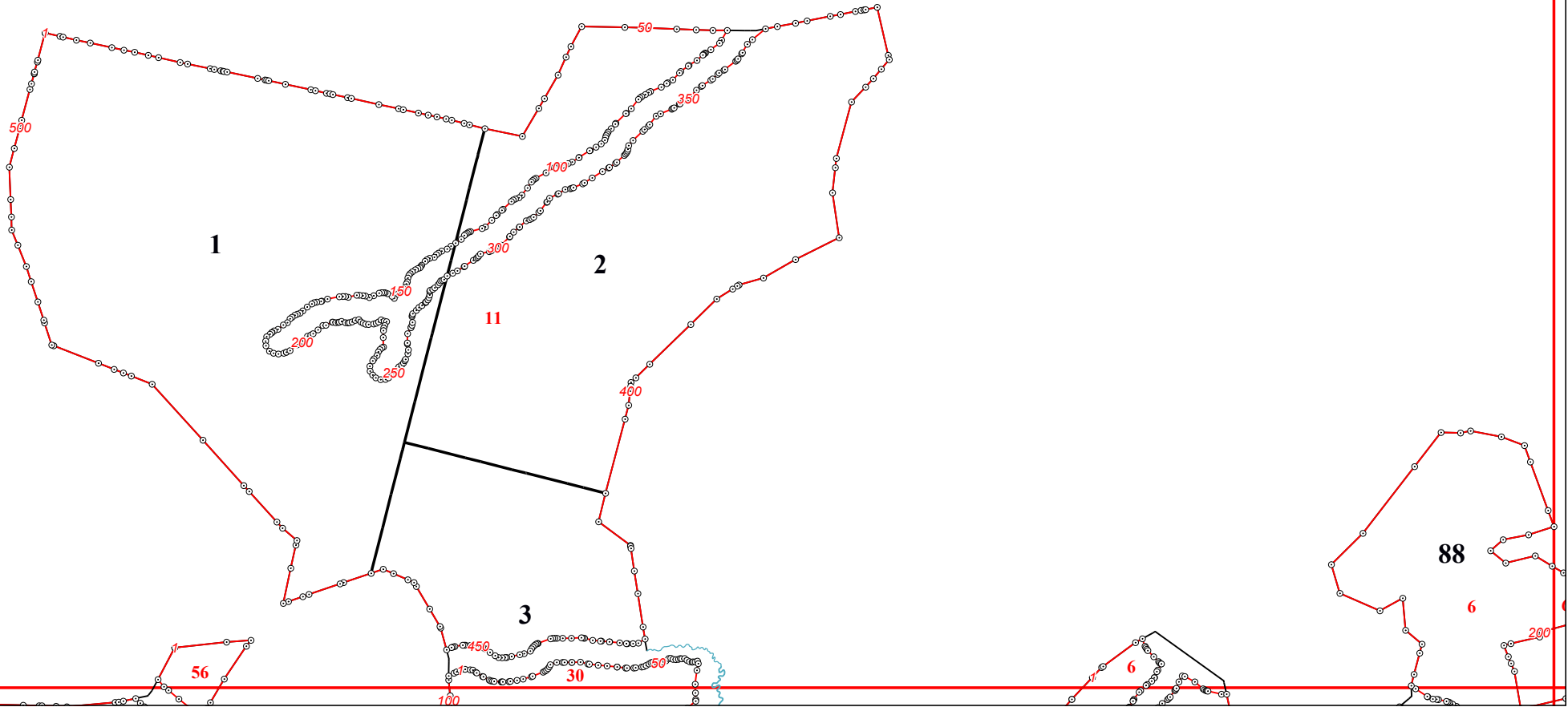


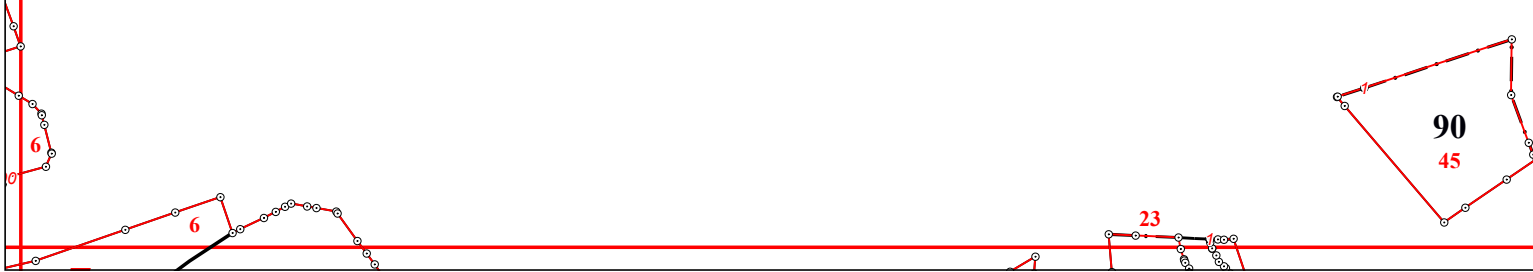
**Графическое описание местоположения границ земель,  
на которых располагаются эксплуатационные леса, на территории  
Воронского участкового лесничества  
Судиславского лесничества Костромской области**

Приложение № 8 к приказу Рослесхоза  
от 28.02.2023 № 310

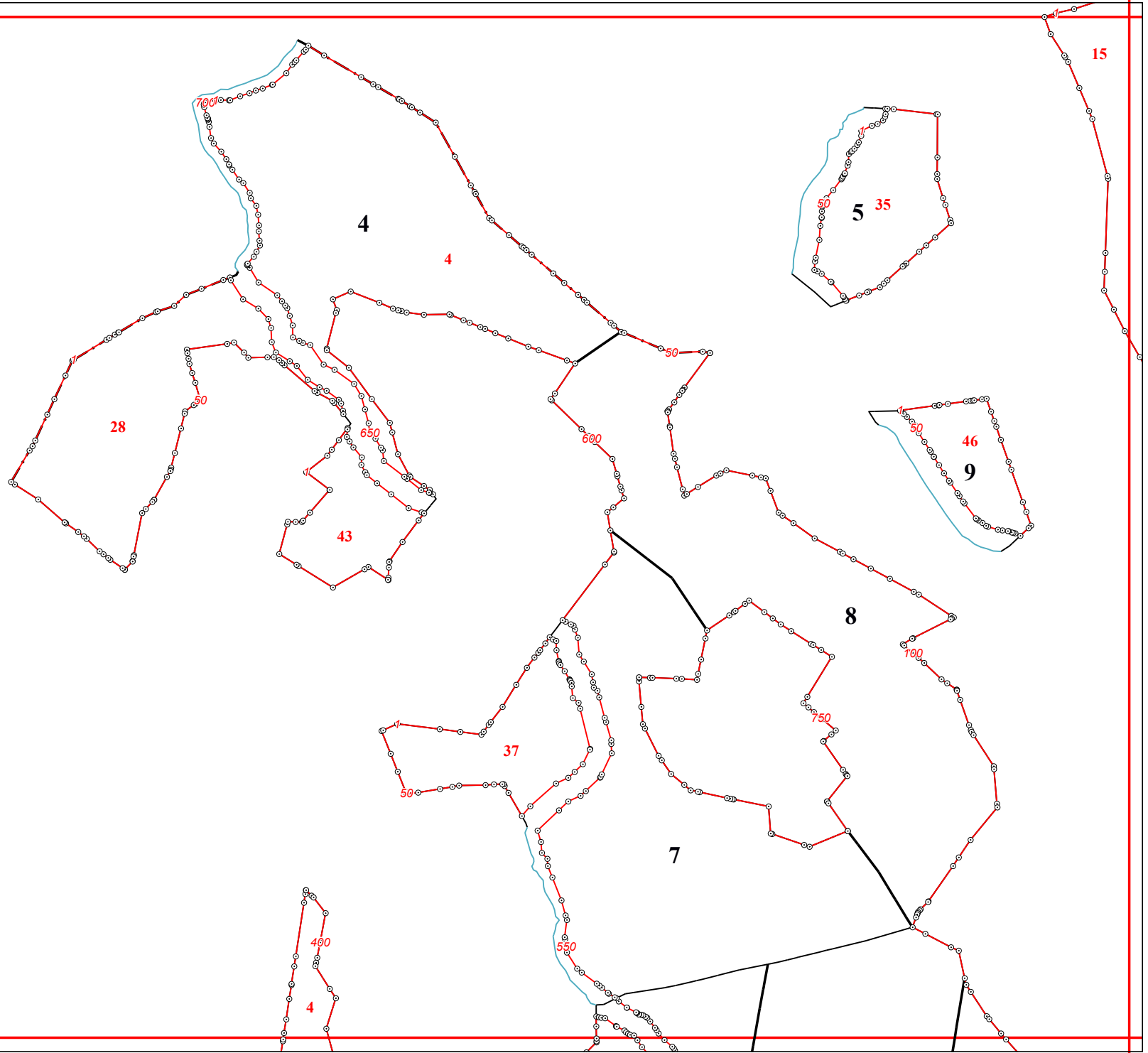


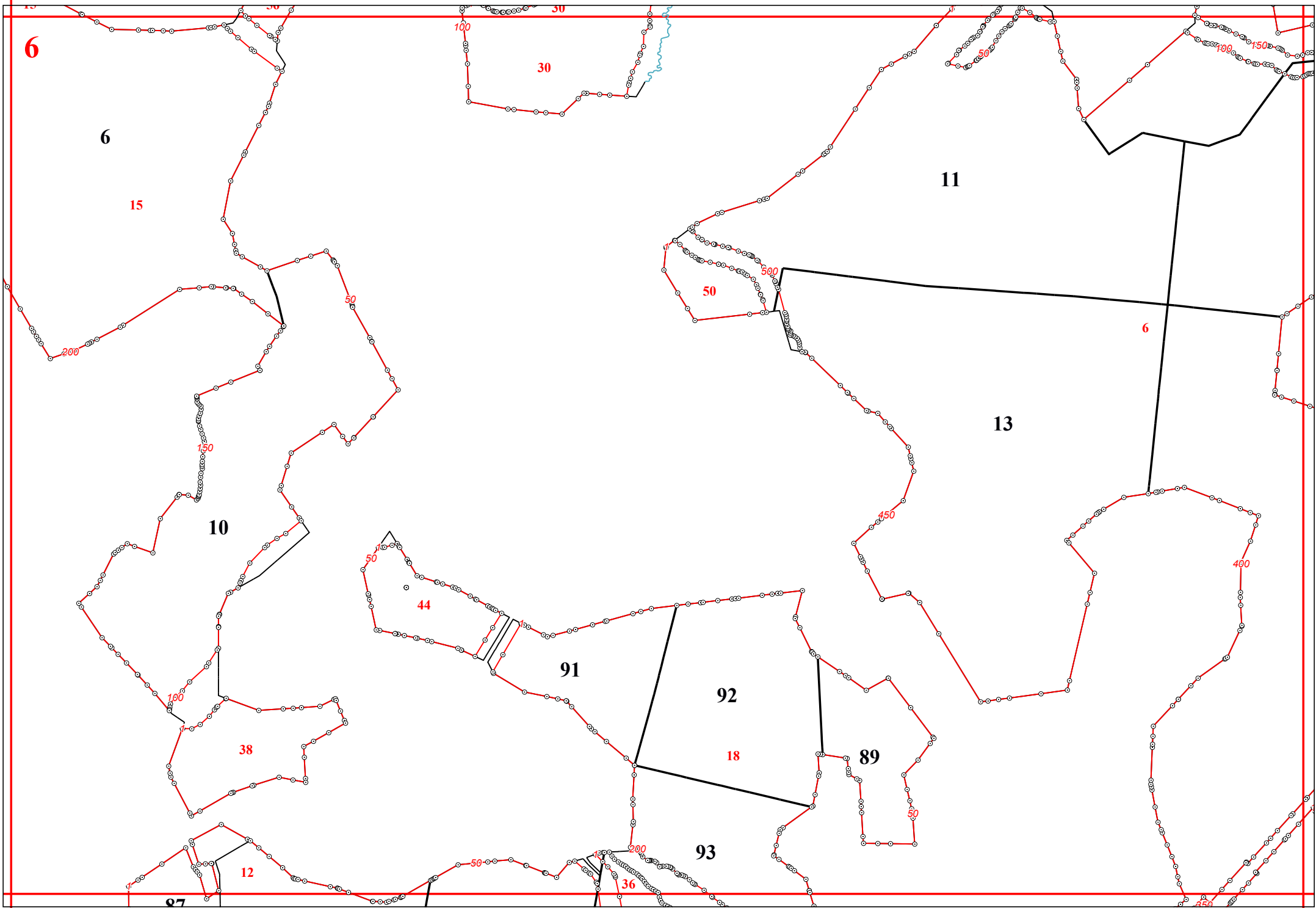


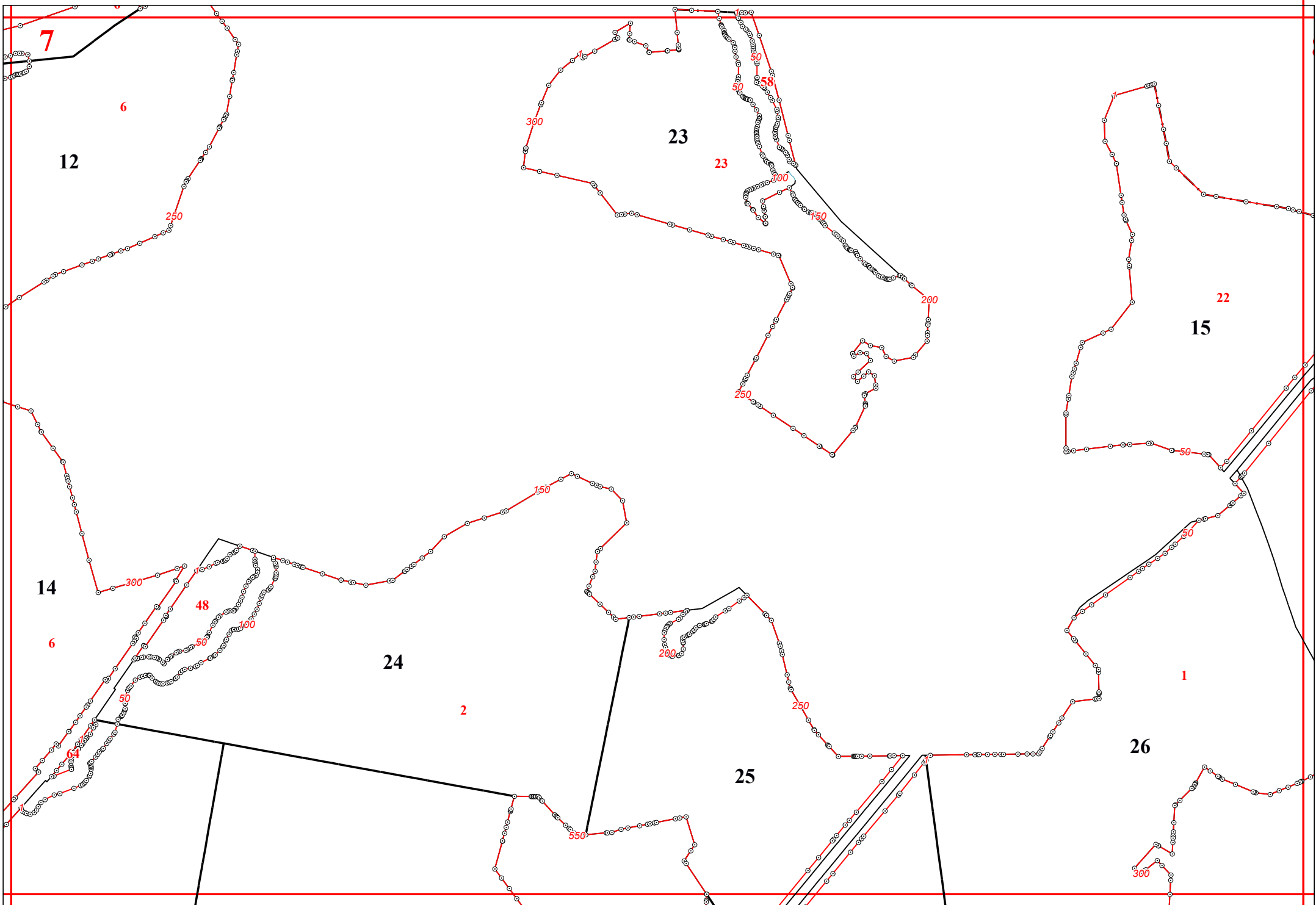
3



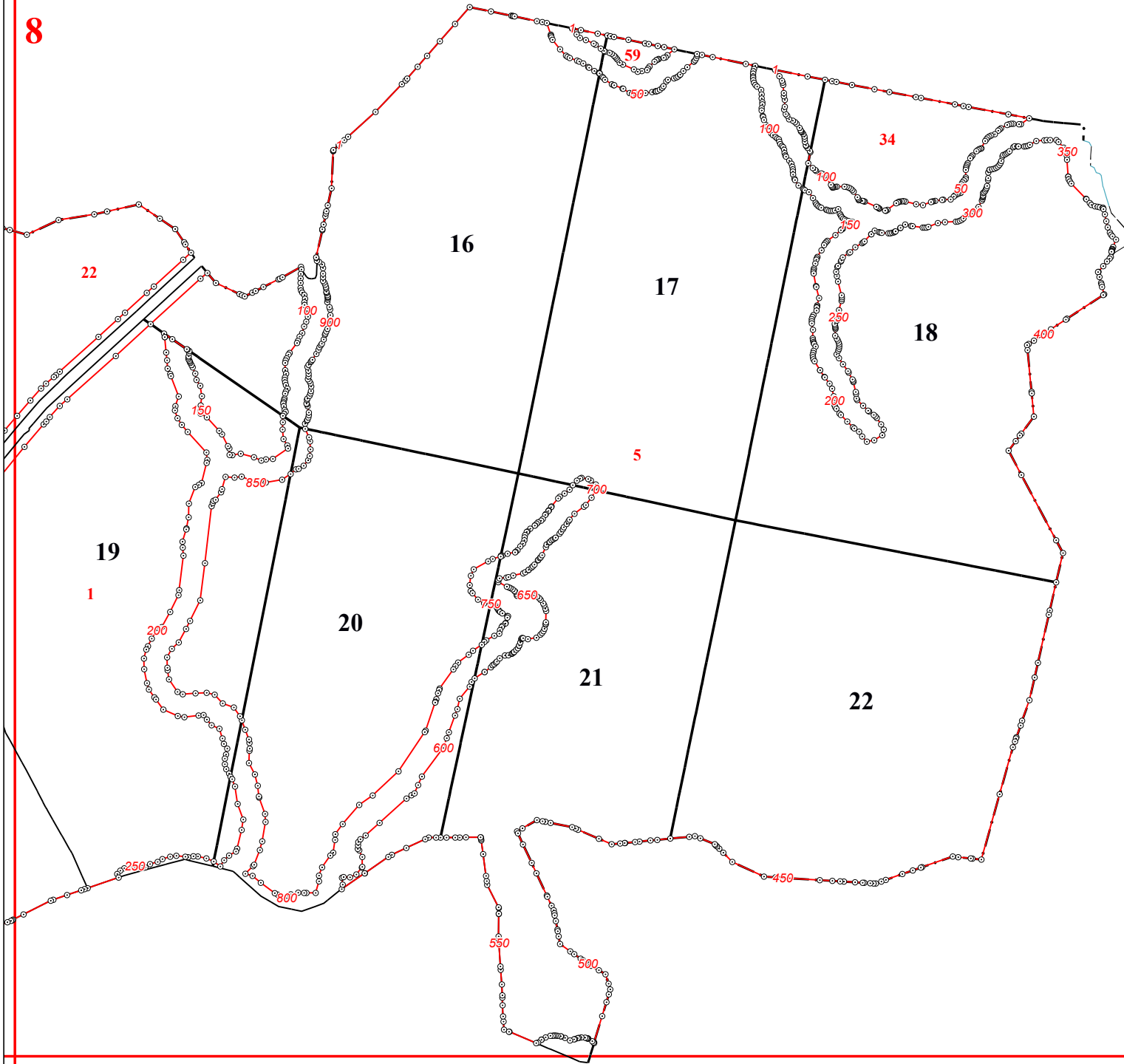
5

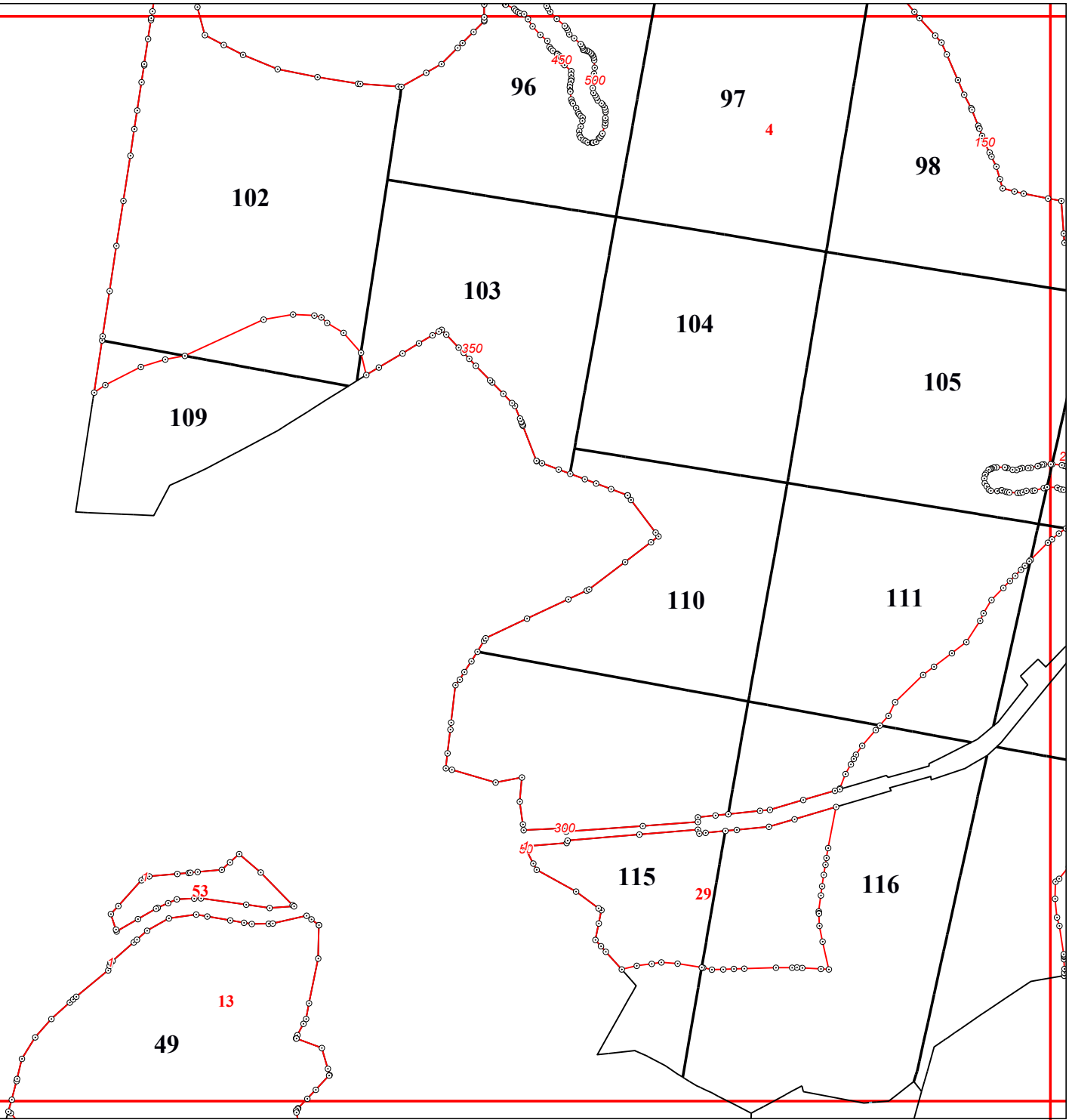




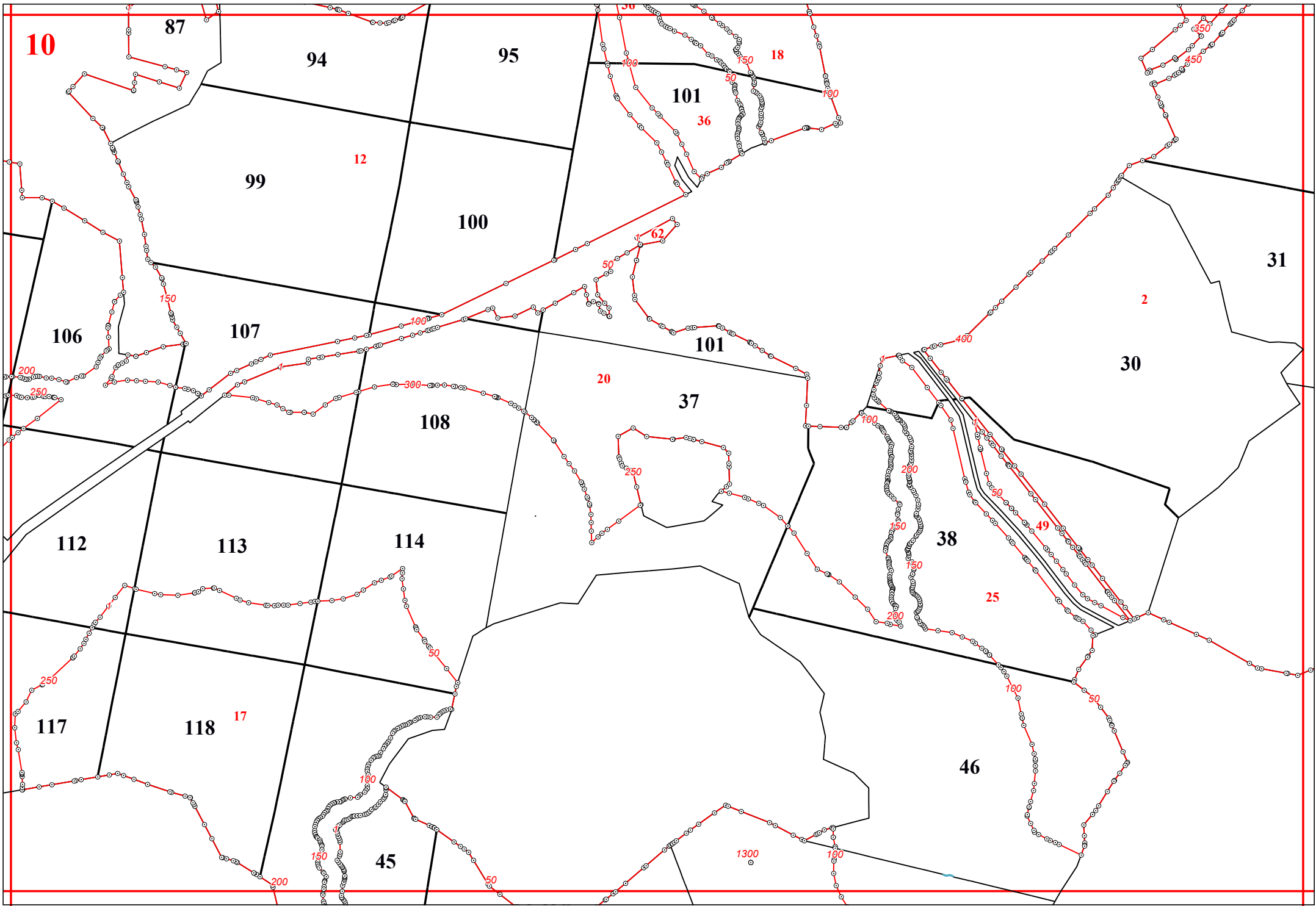


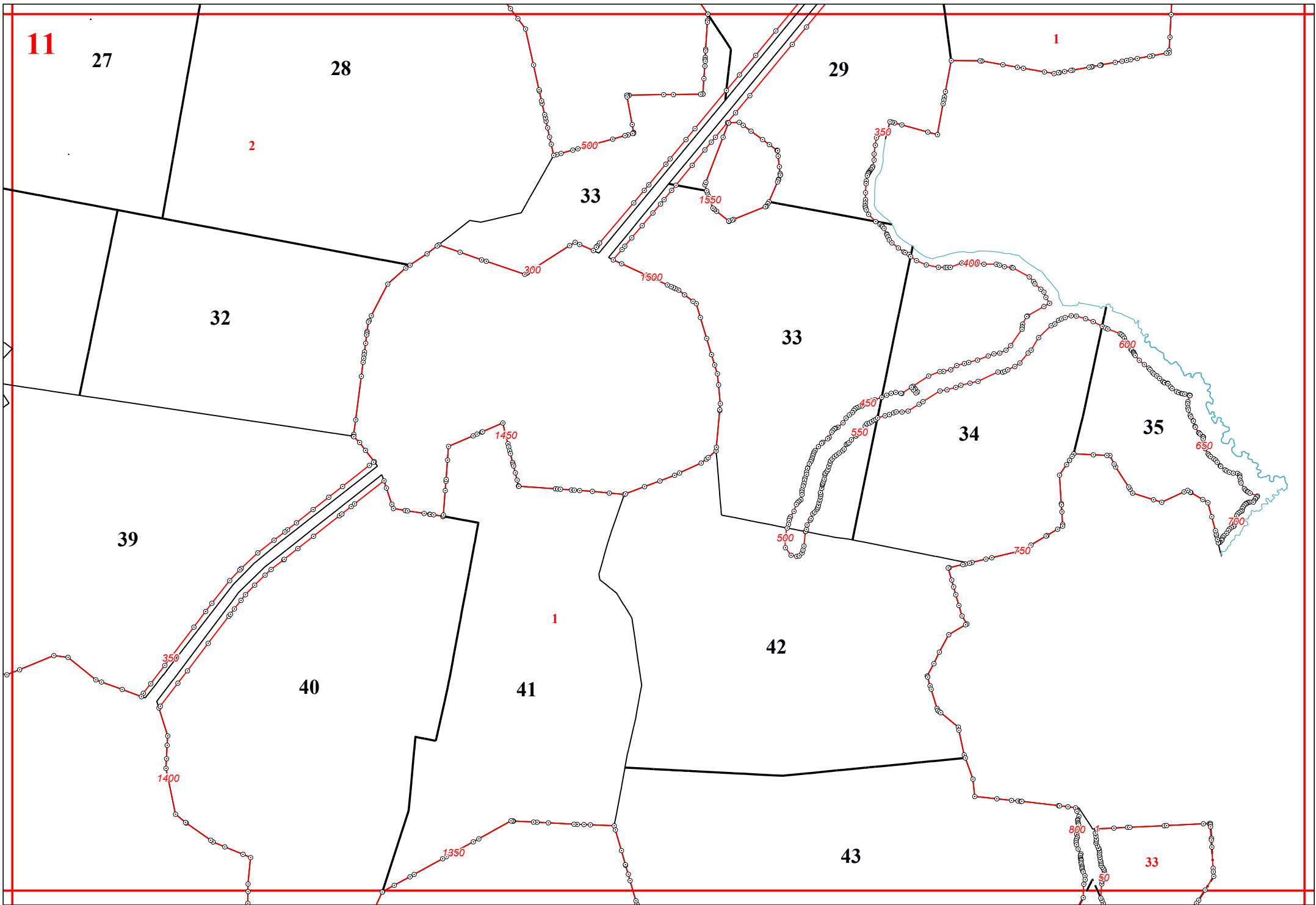
8

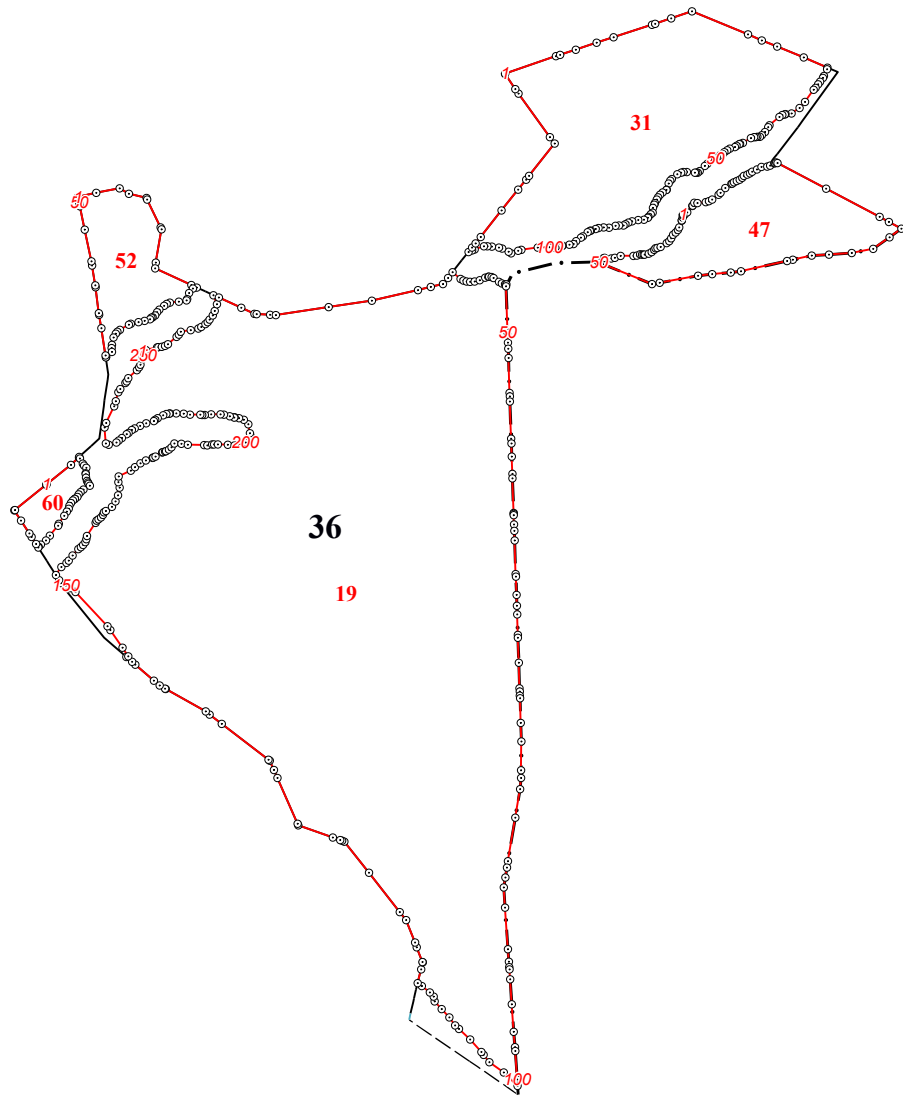




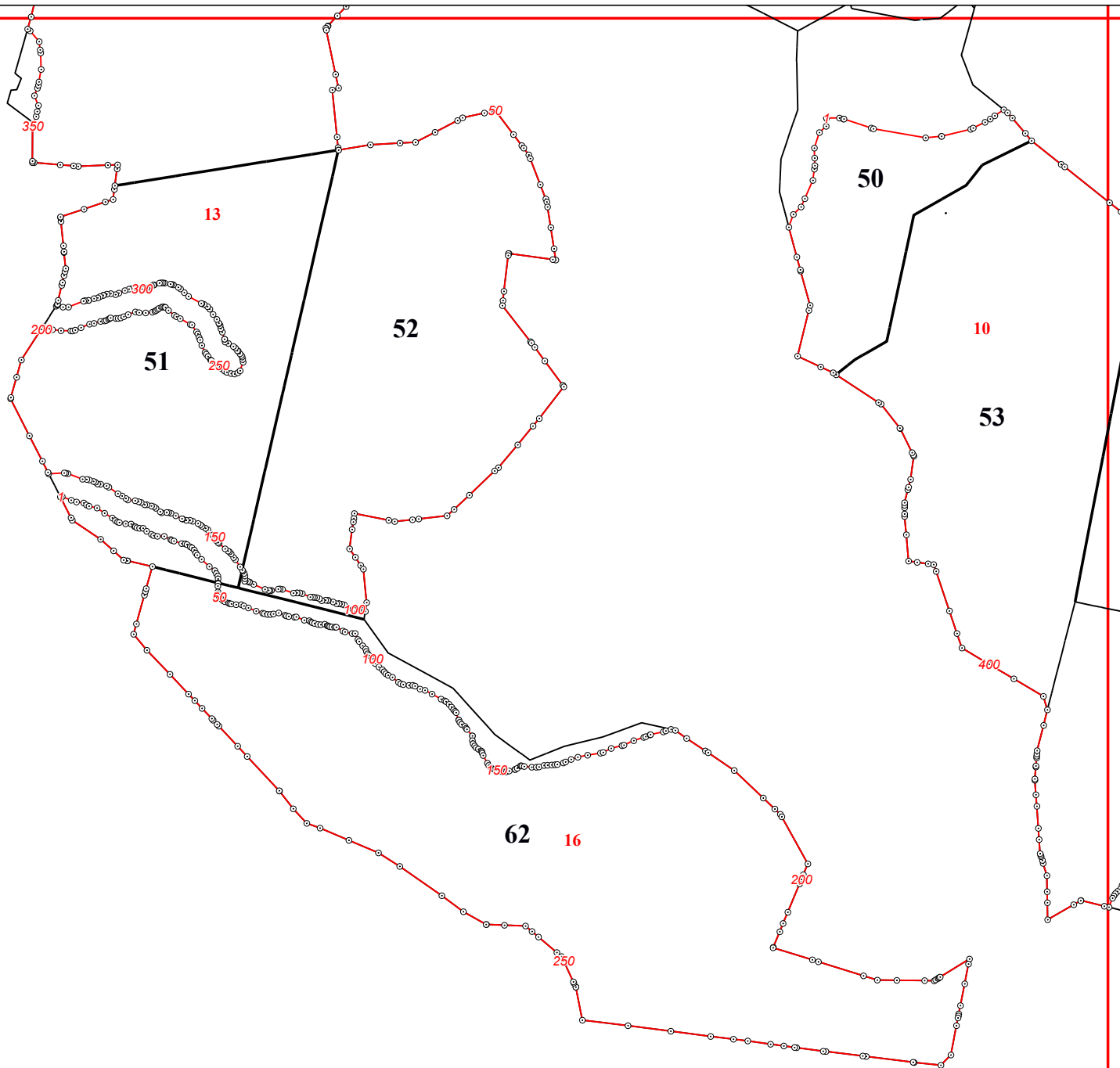


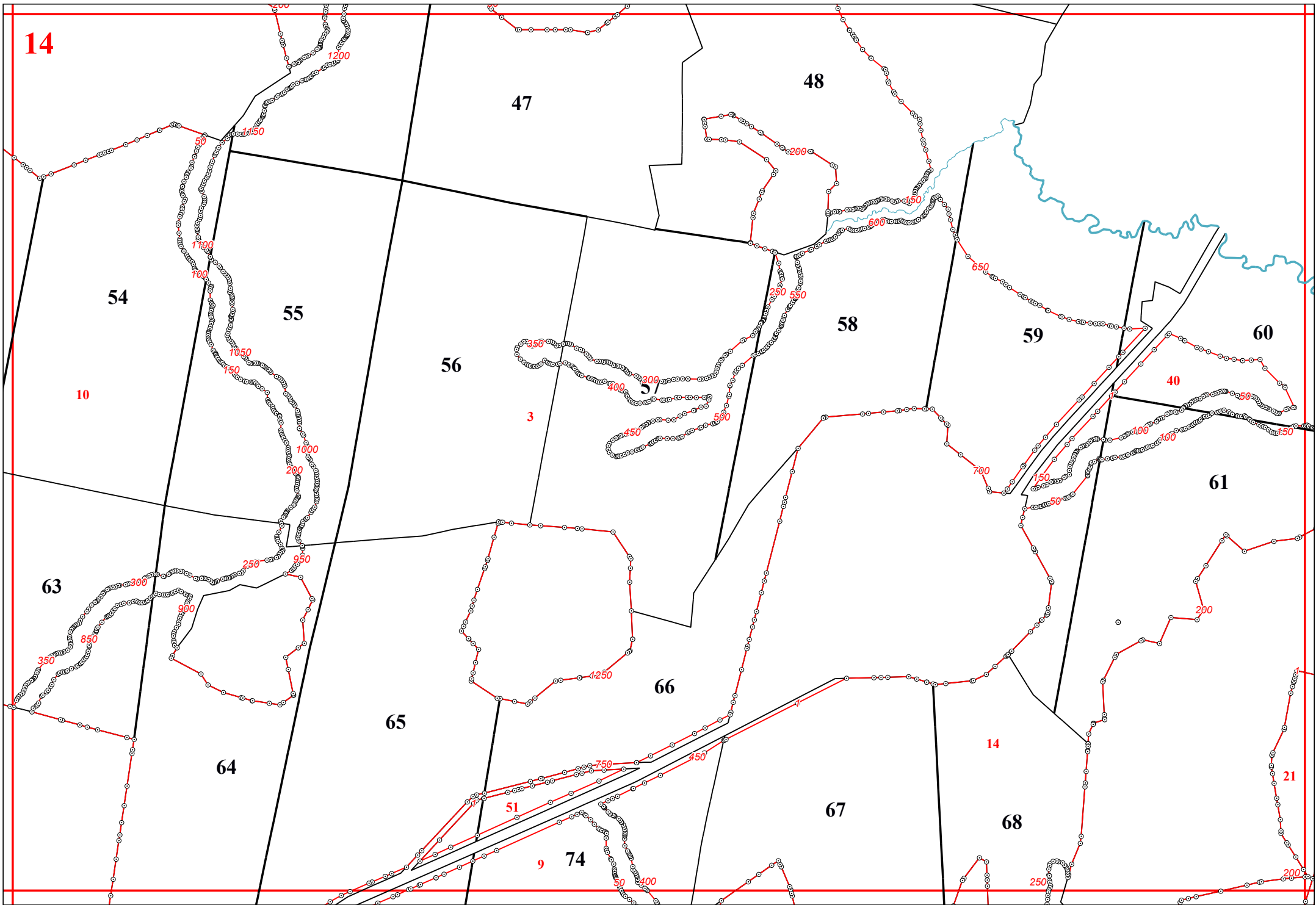




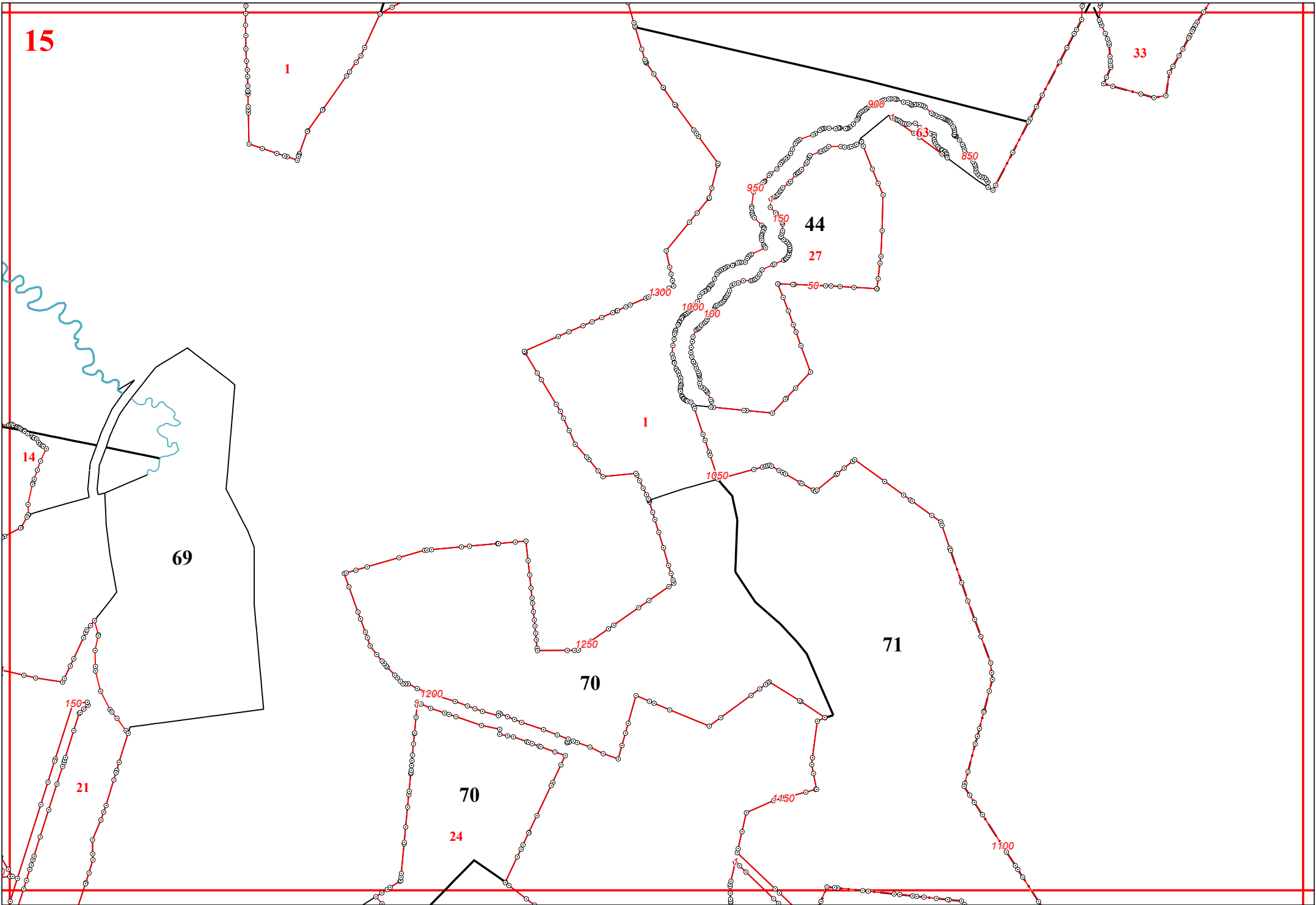


13

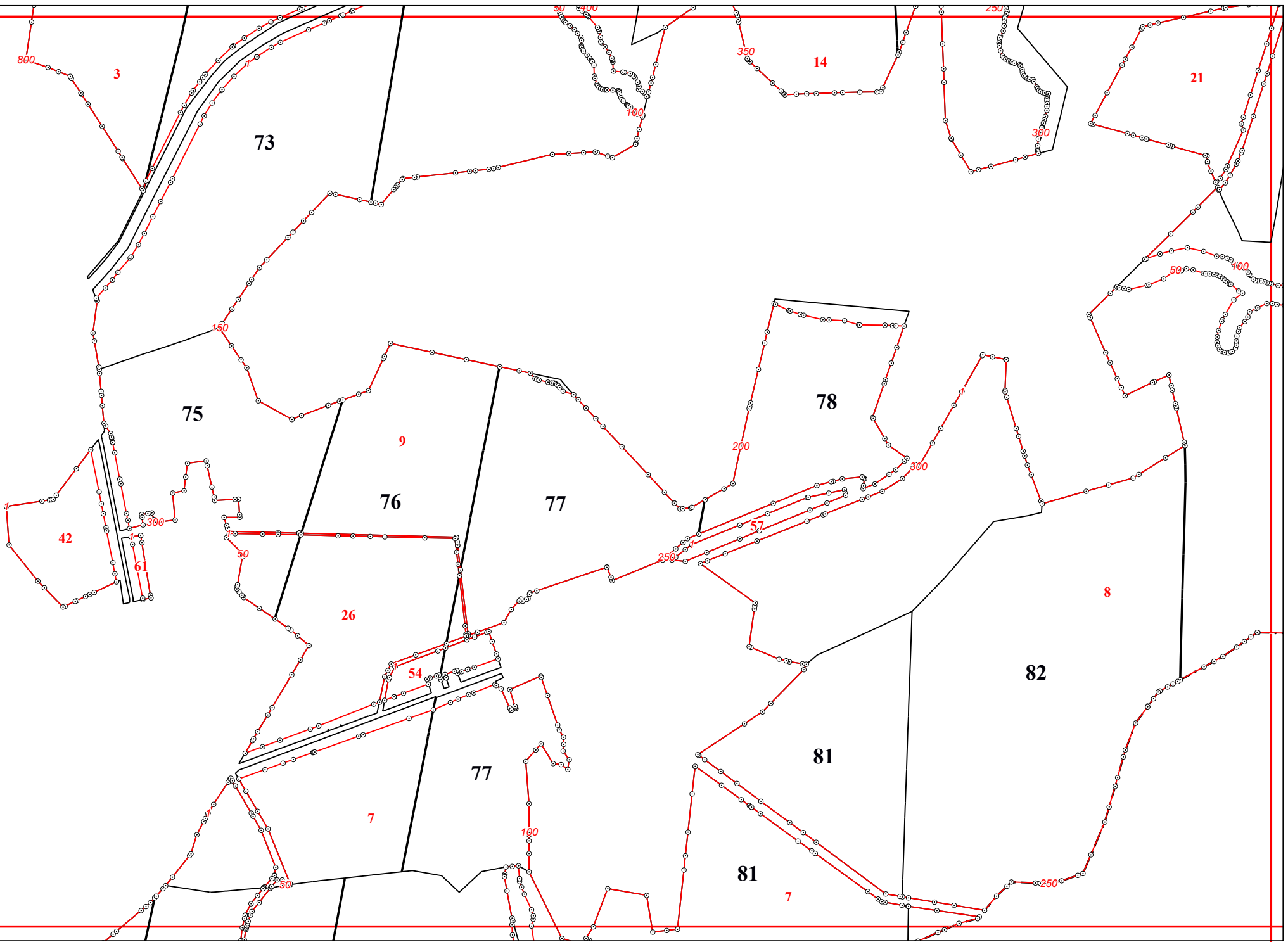


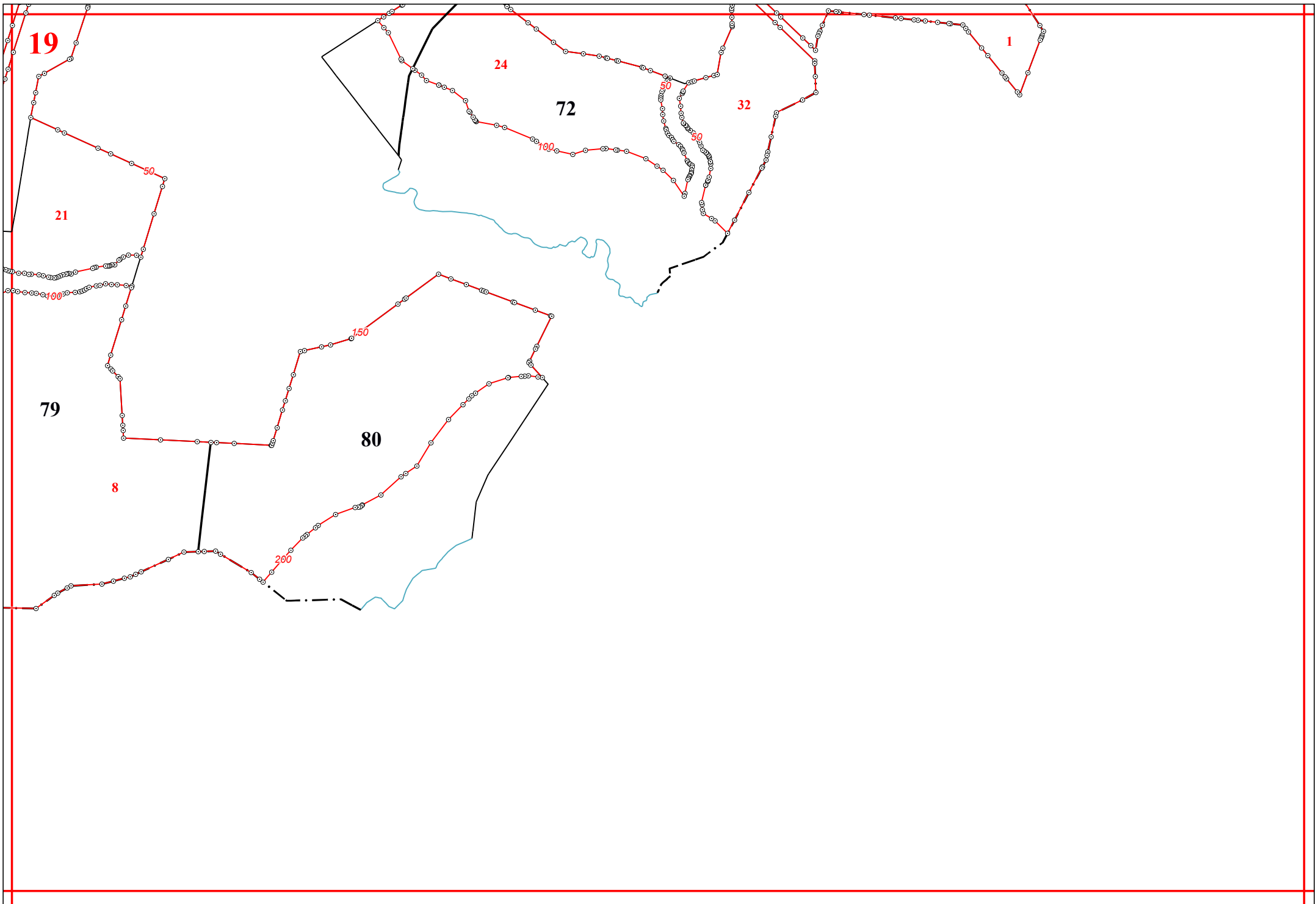


15

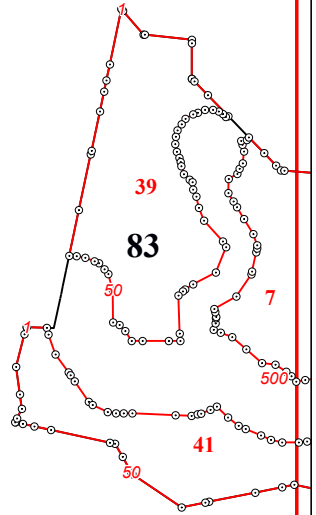


18









22

550

150

200

250

300

450

55

400

350

84

85

86

7

