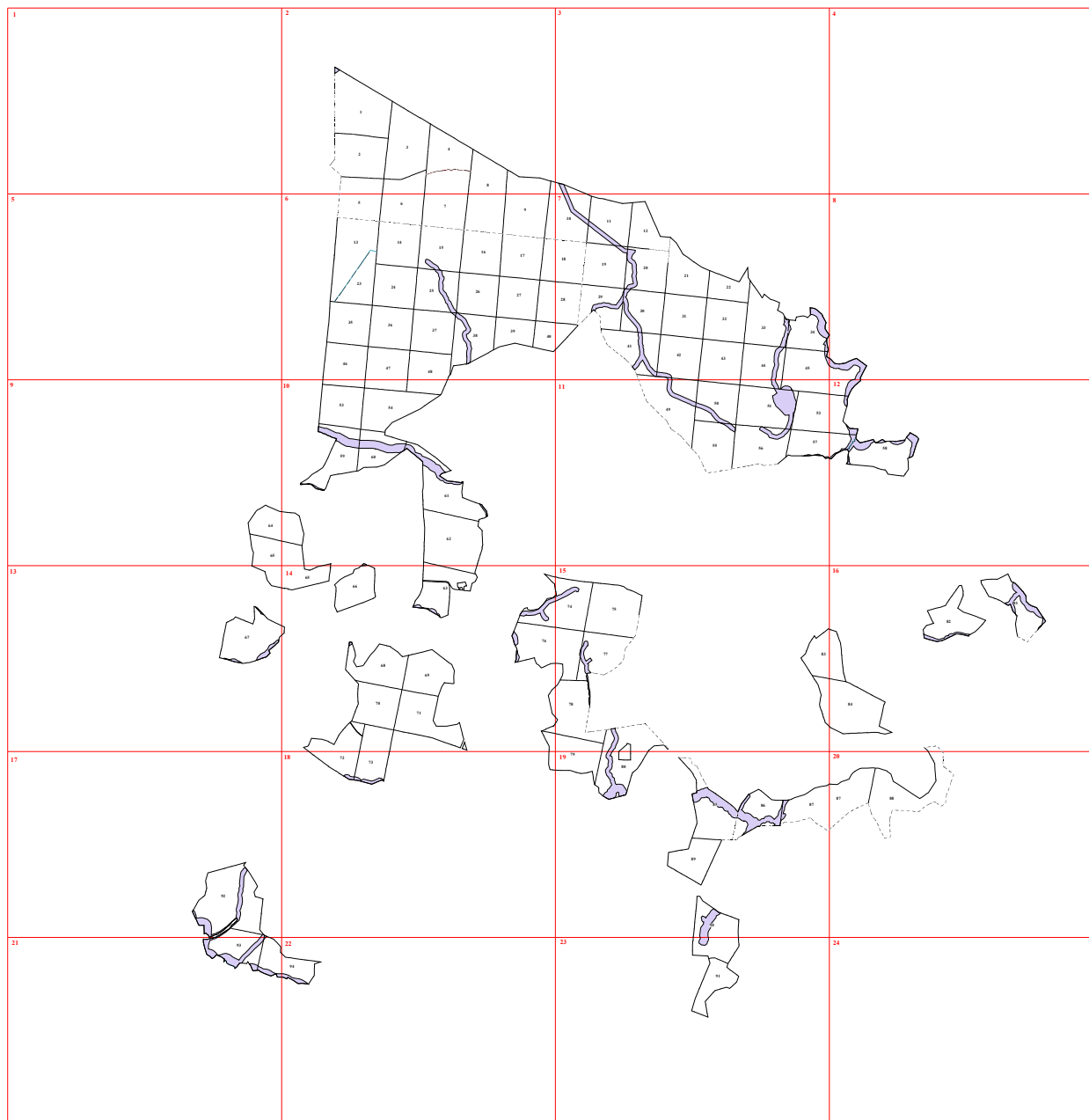
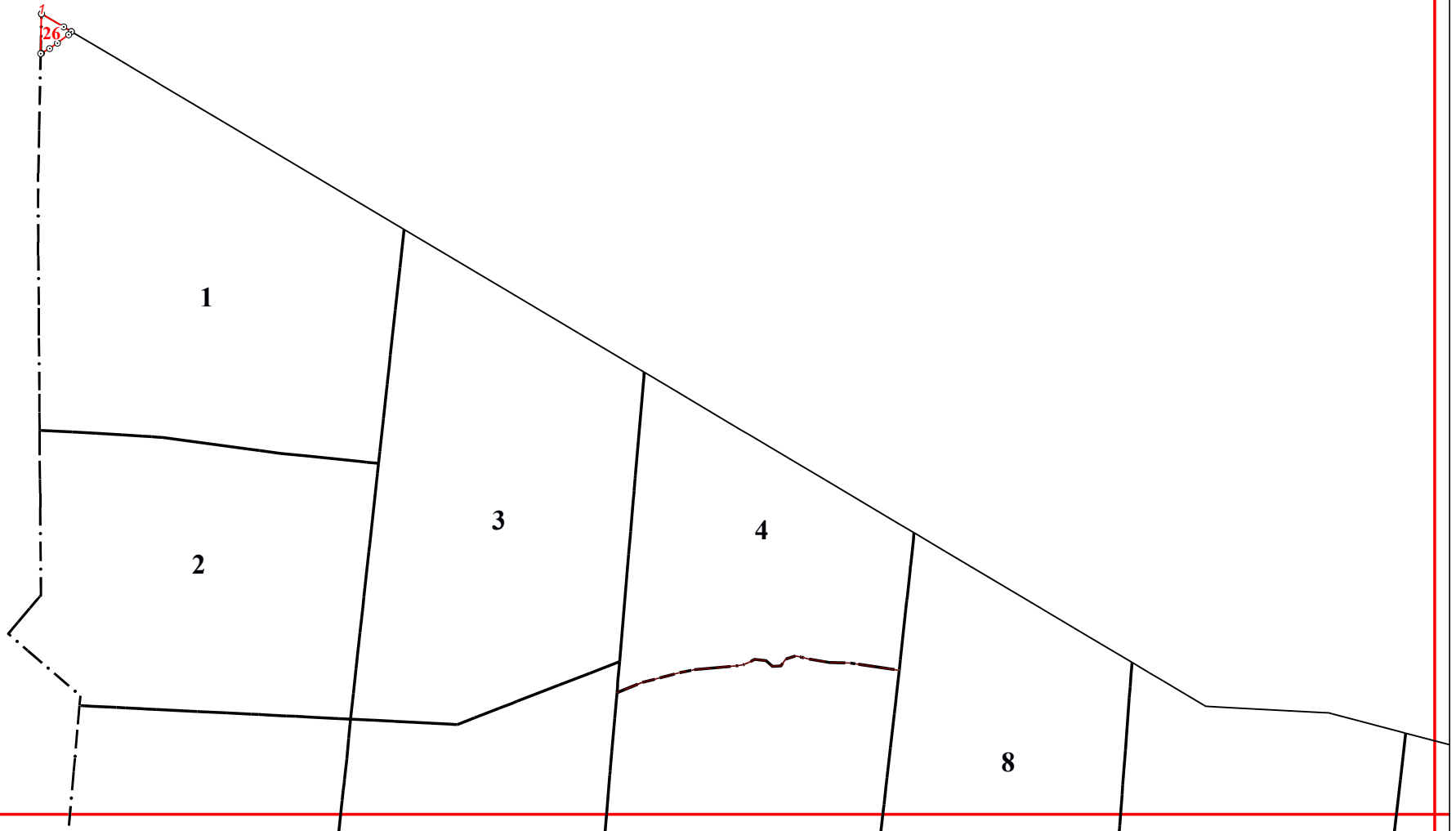


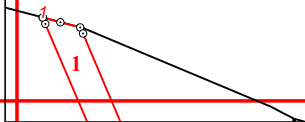
**Графическое описание местоположения границ земель, на которых
располагаются леса, расположенные в водоохранных зонах, на территории
Сухоруковского участкового лесничества Судиславского лесничества
Костромской области**

Приложение № 52 к приказу Рослесхоза
от 28.02.2023 № 310

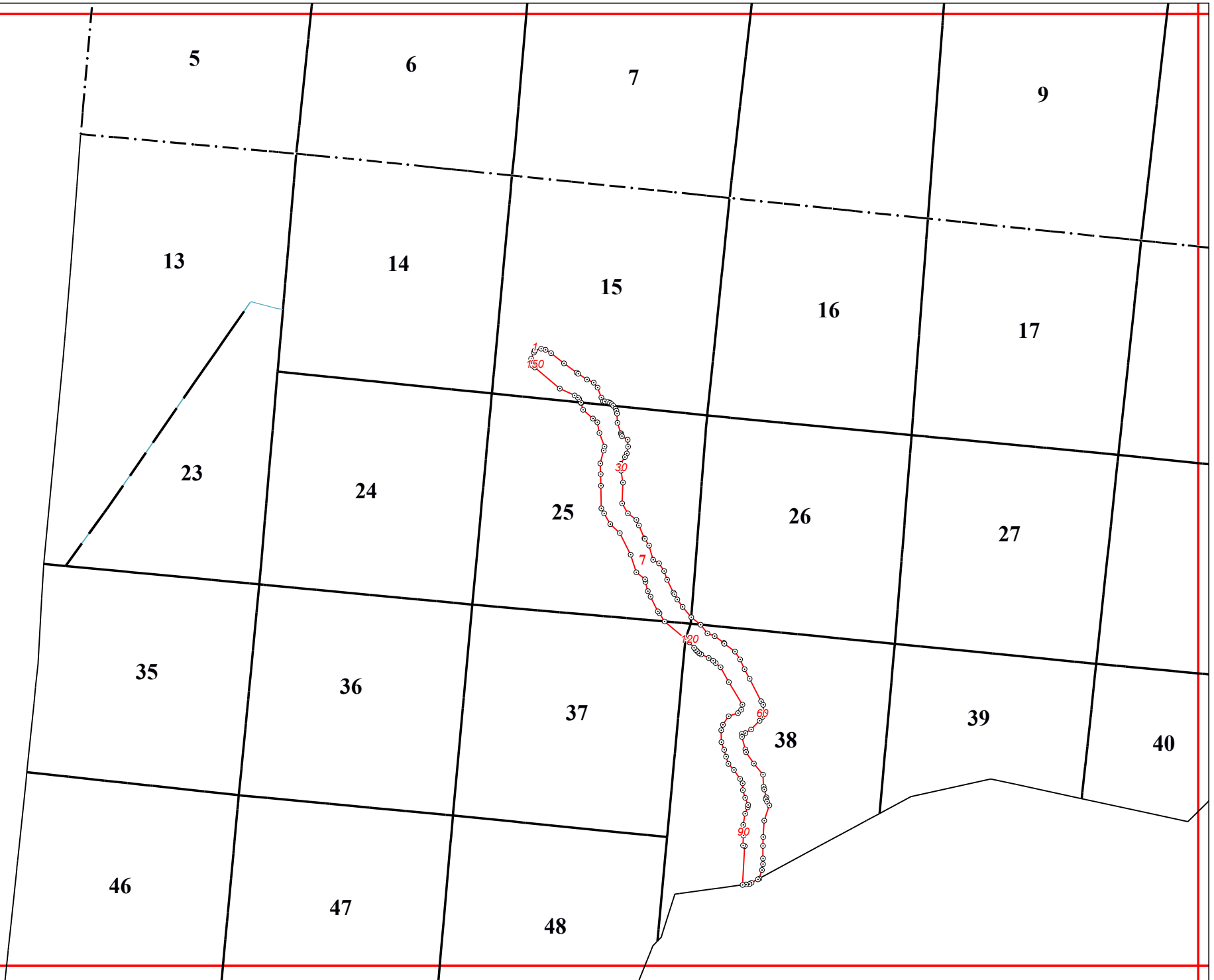


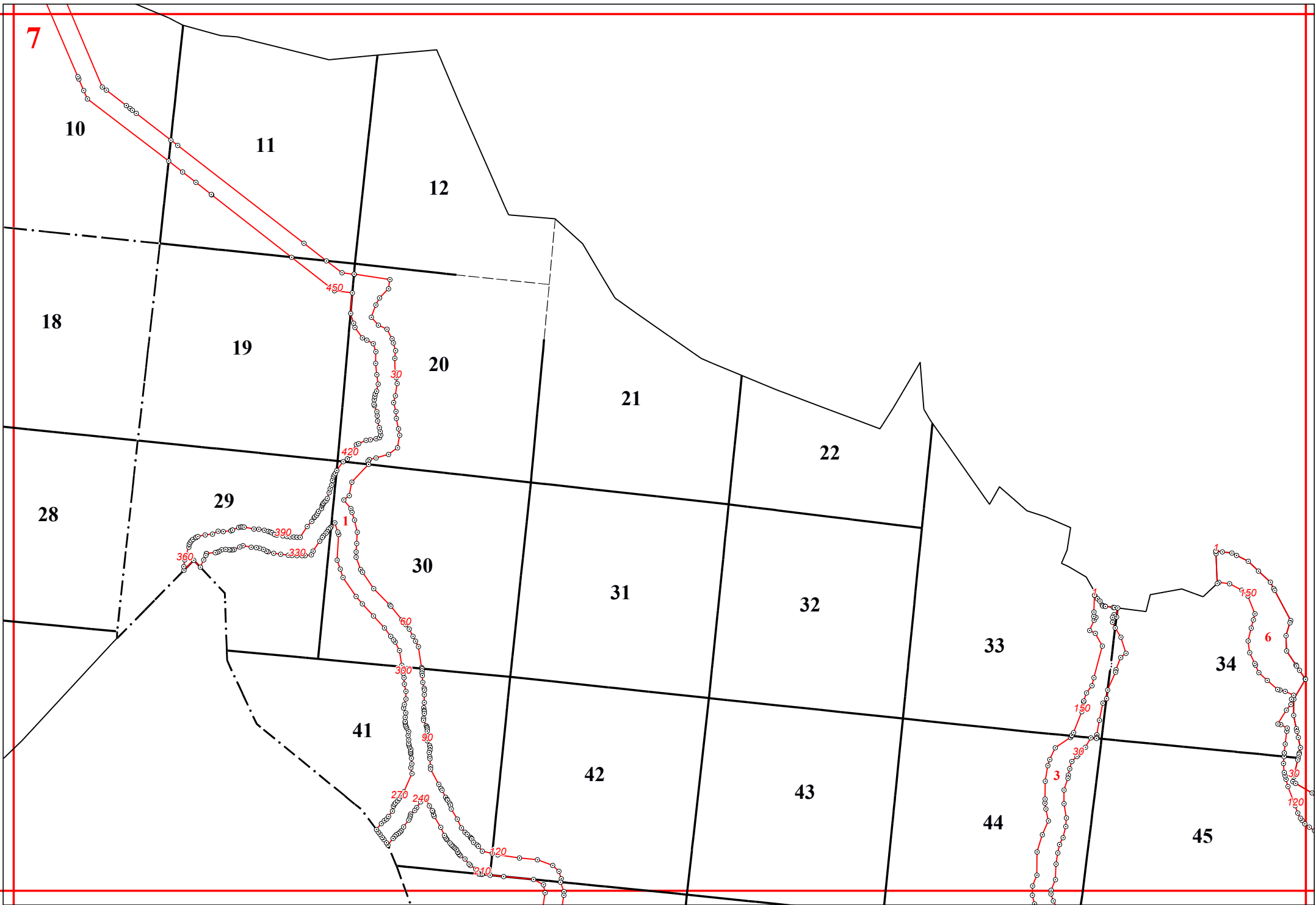


3

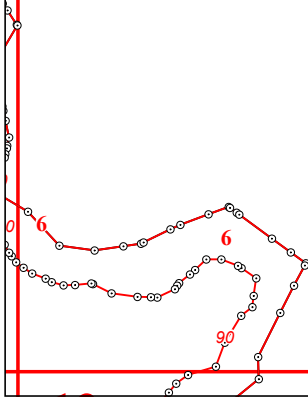


6

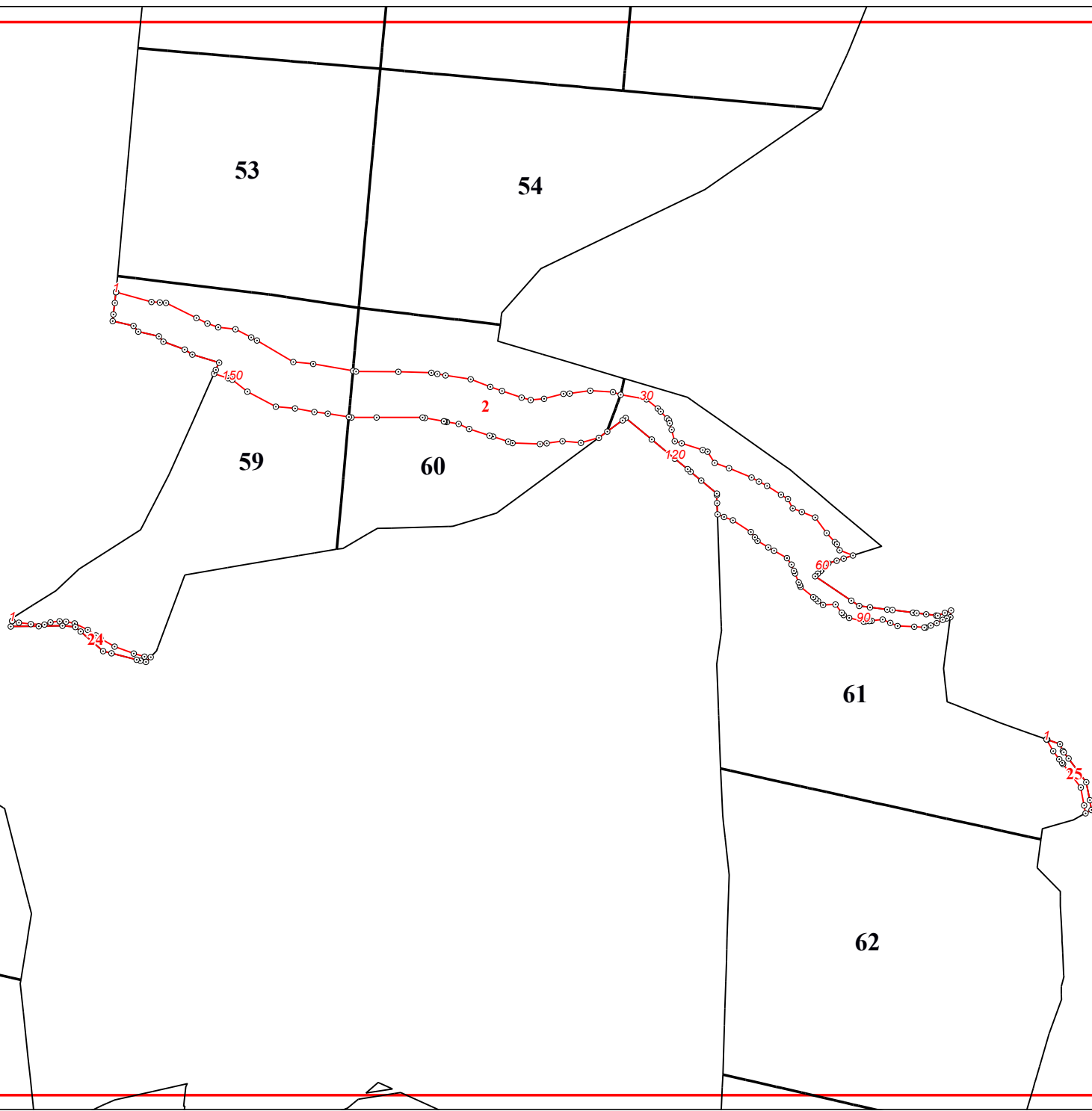




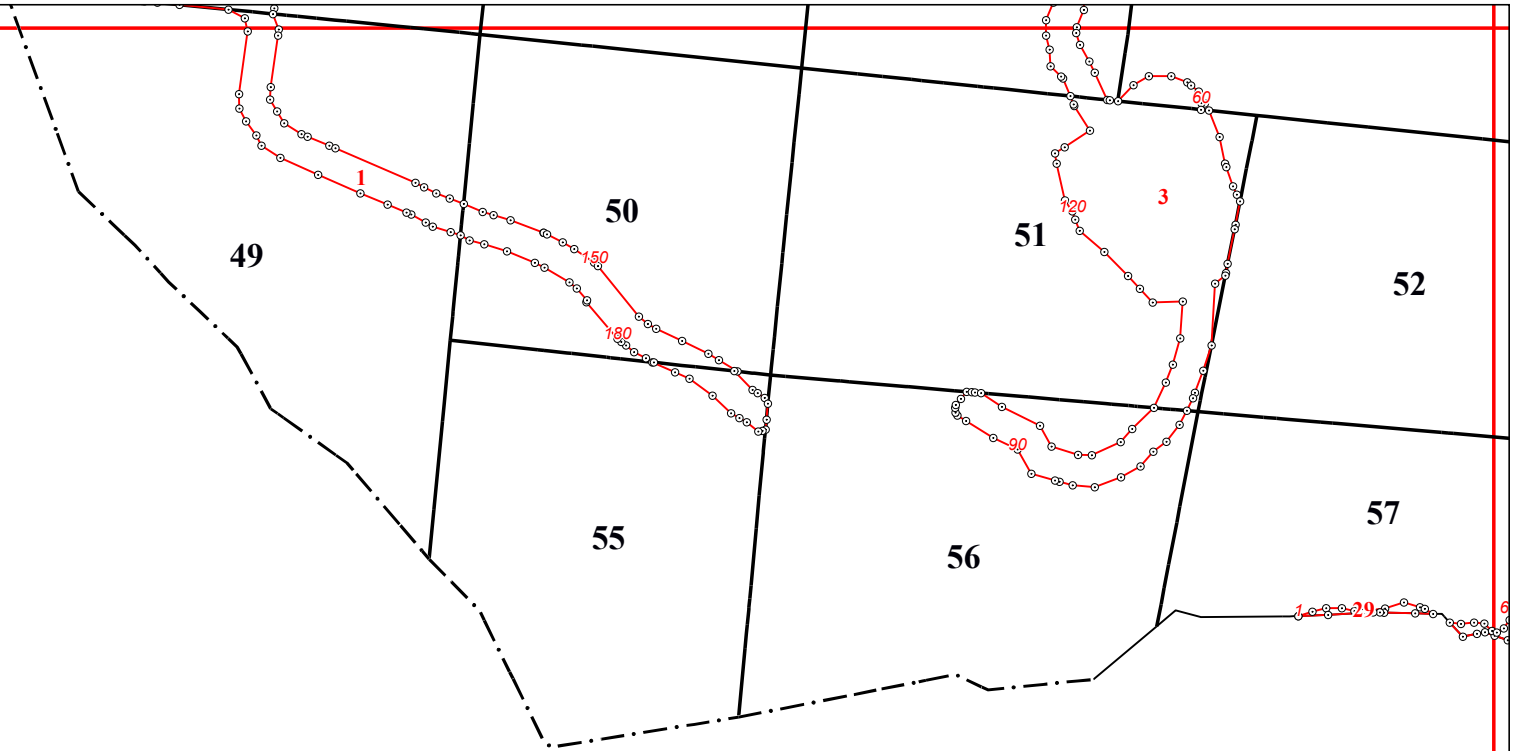
8

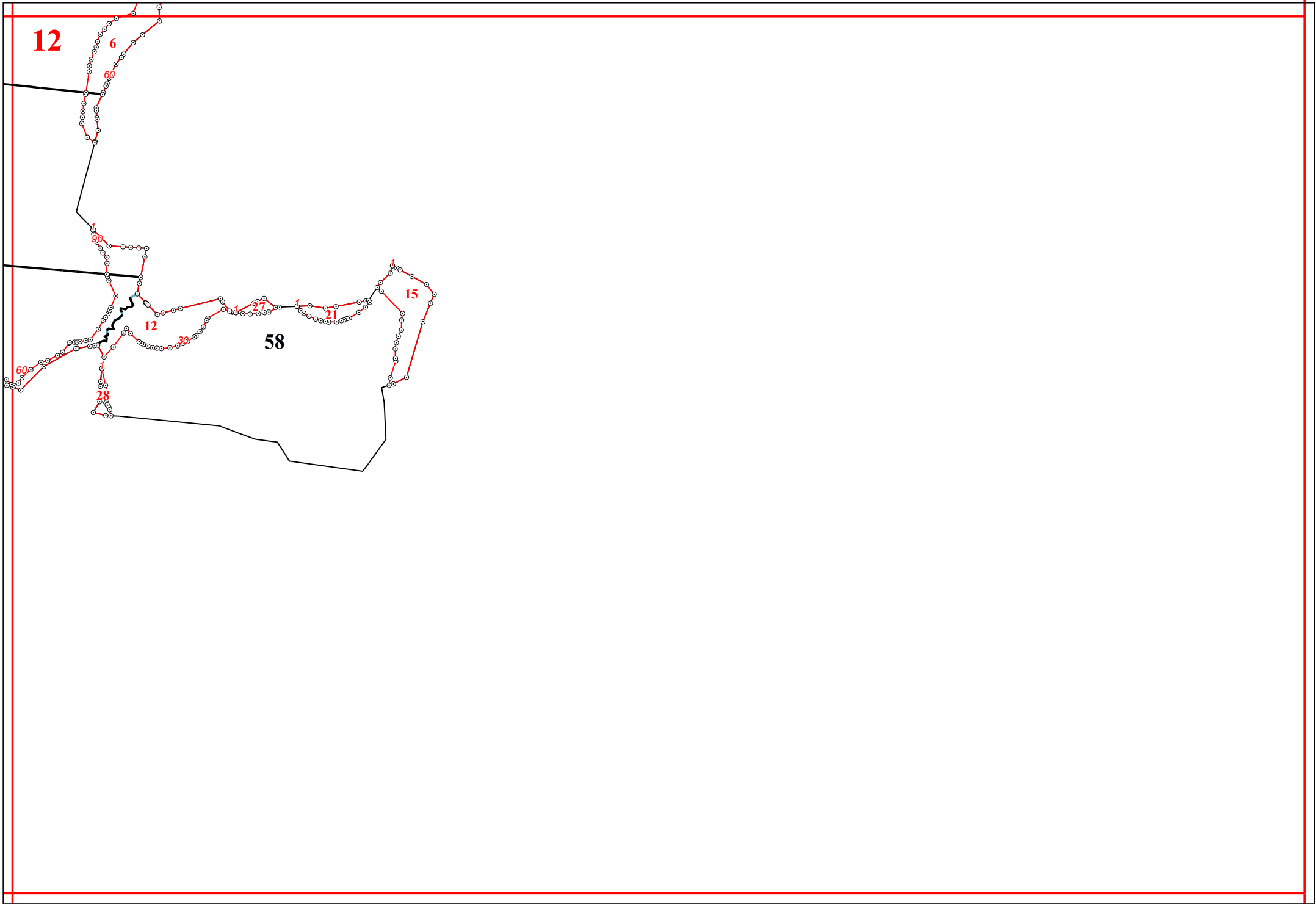


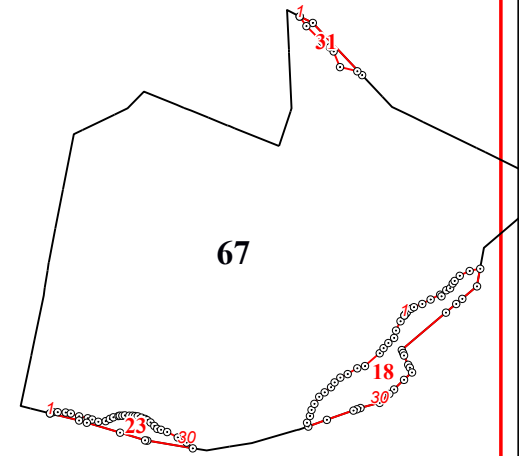
10



11





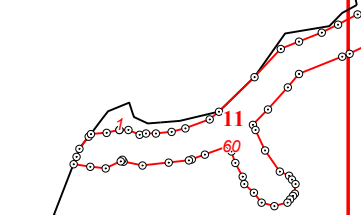
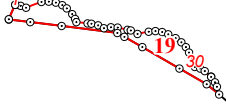


14

65

66

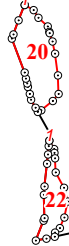
63



30

68

69

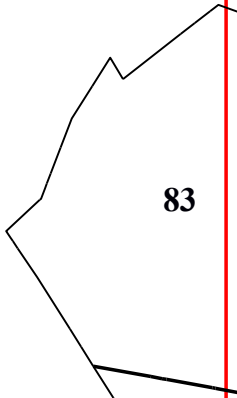
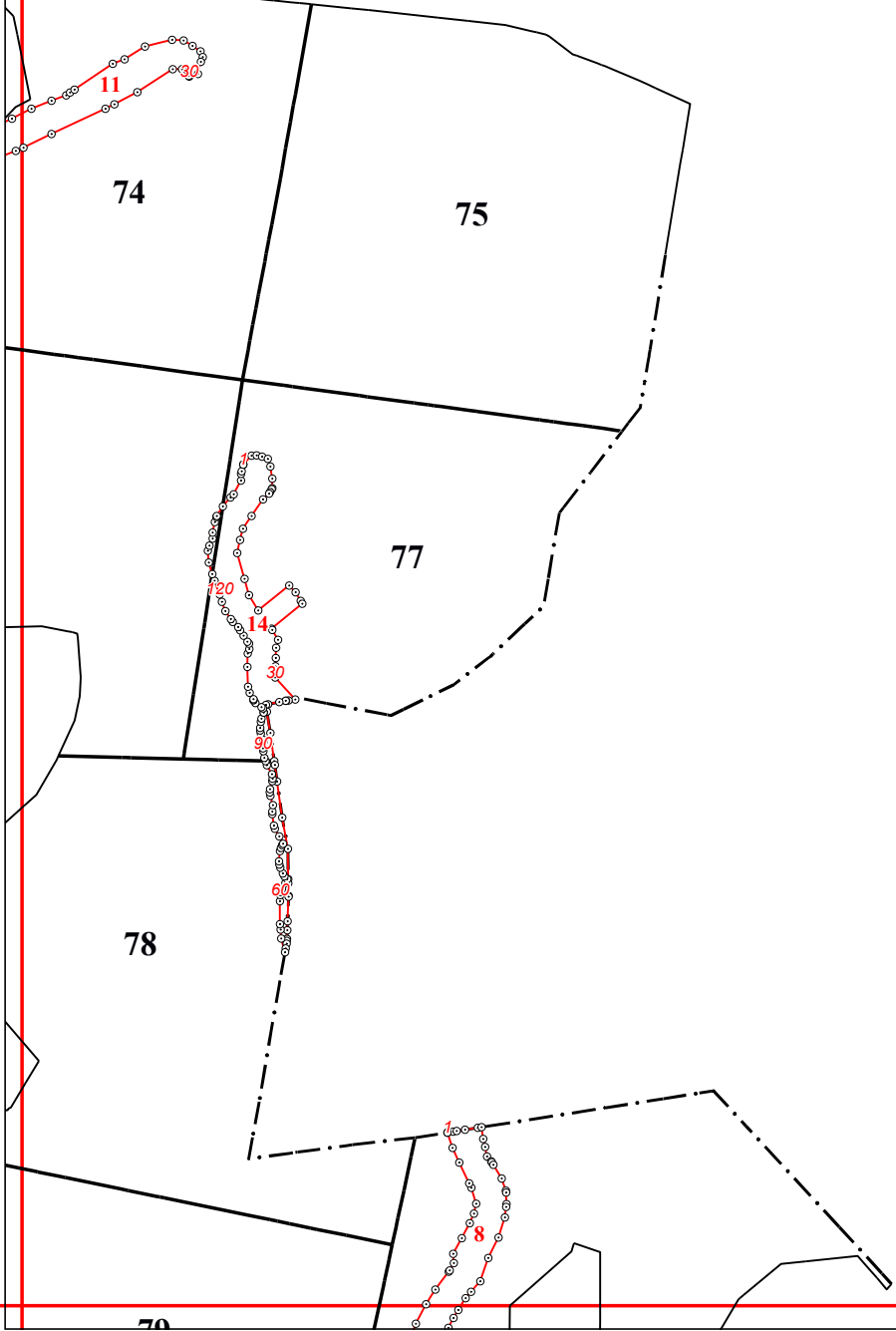


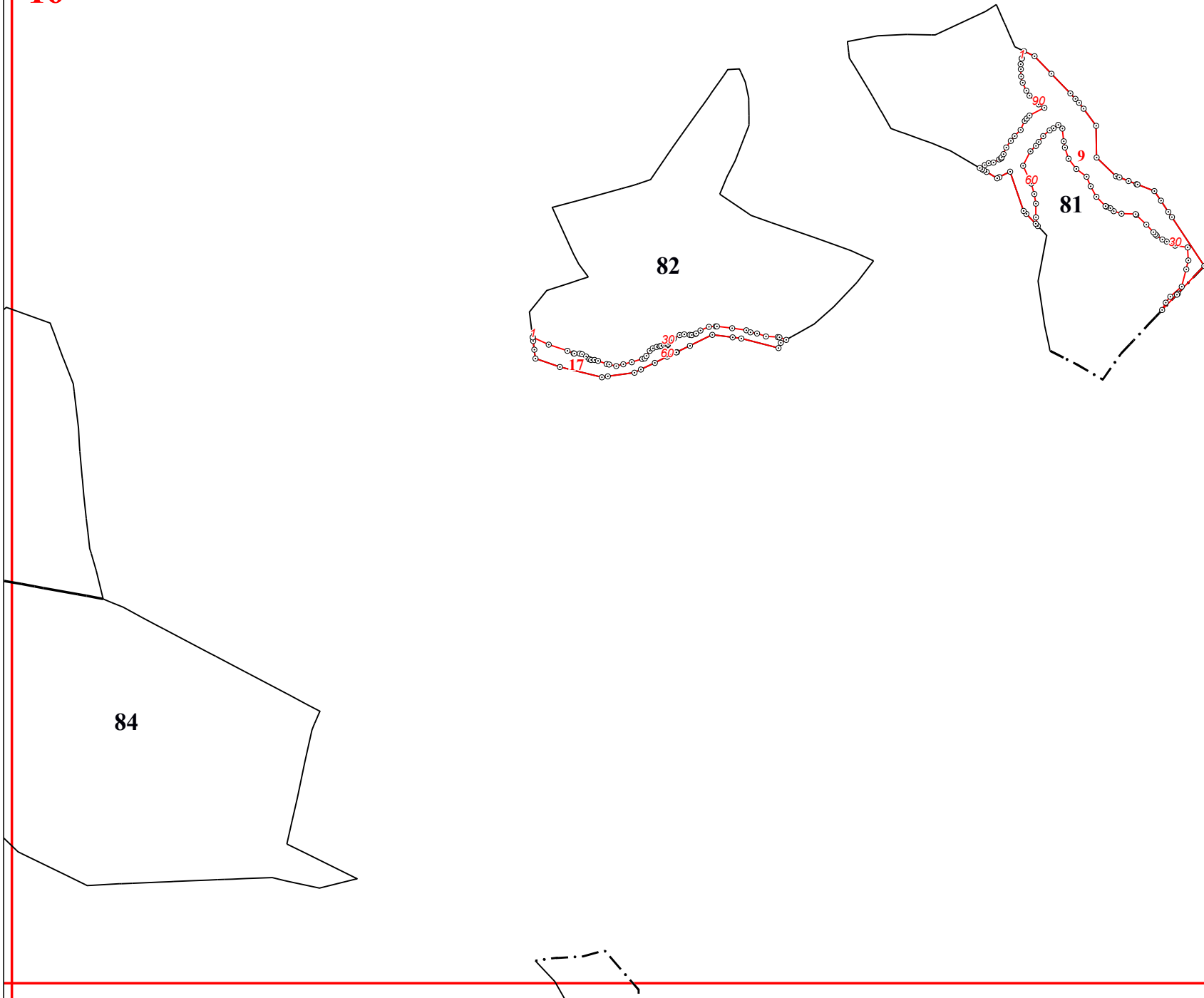
76

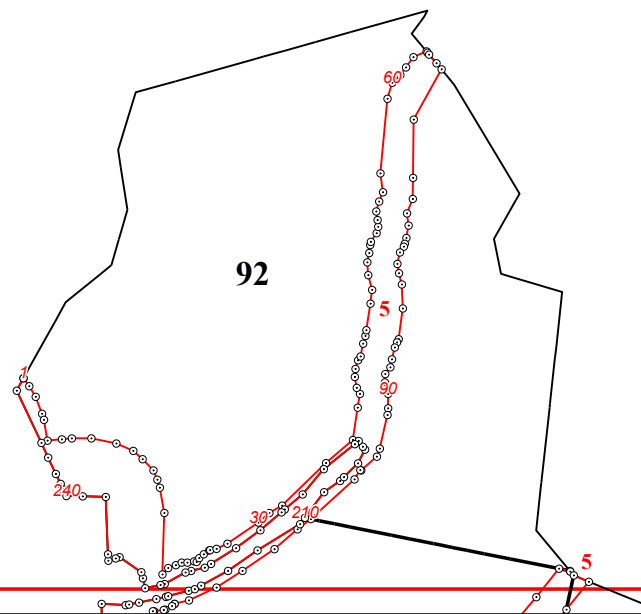
70

71

15



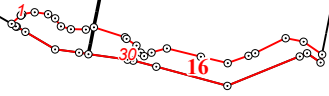




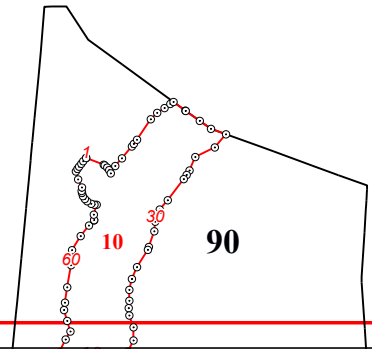
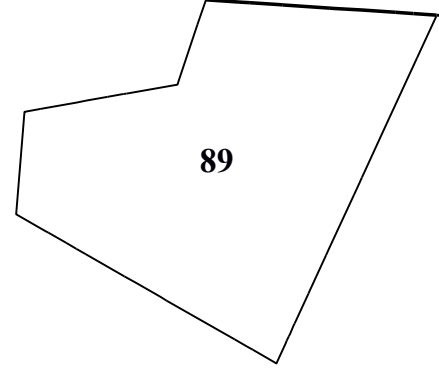
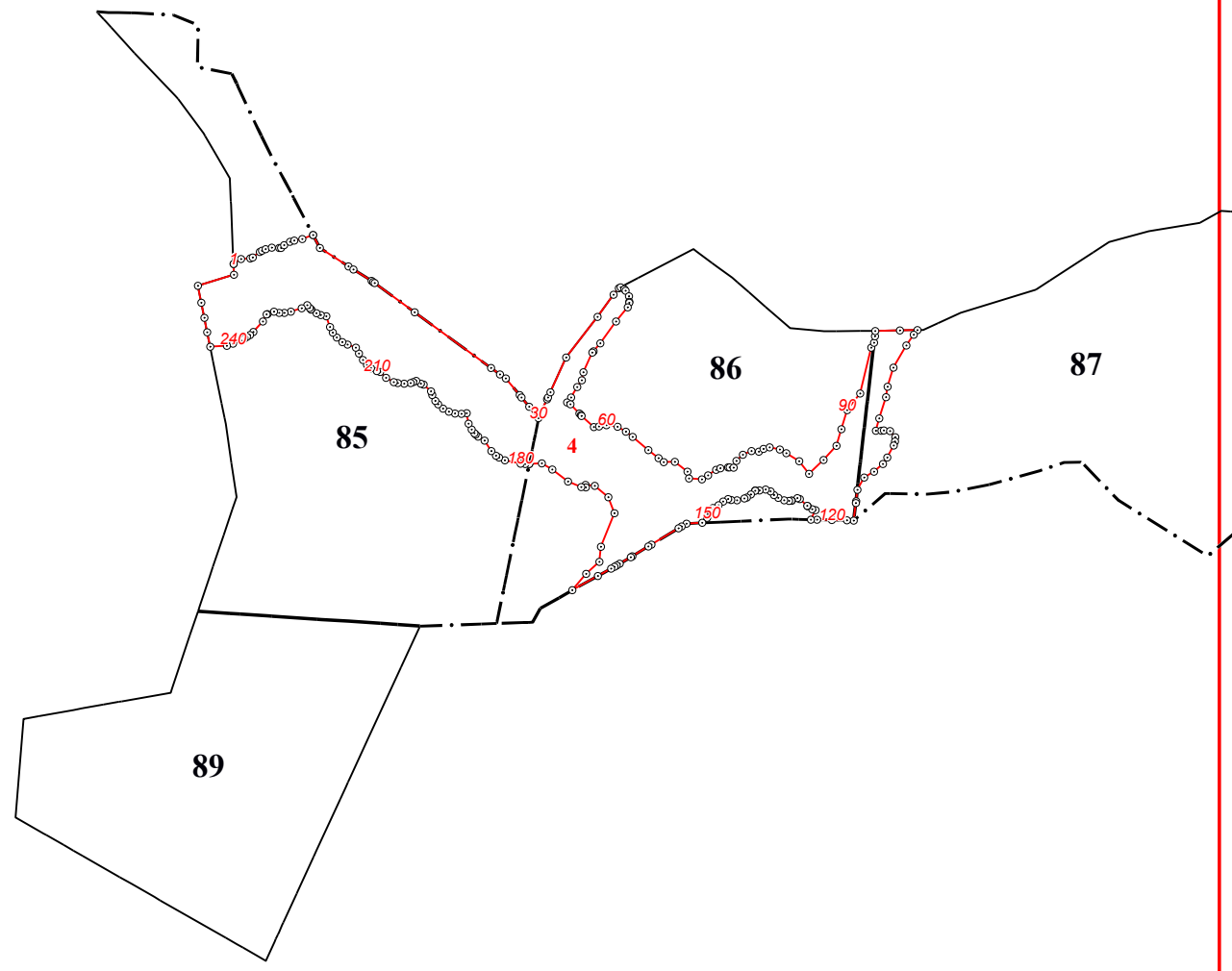
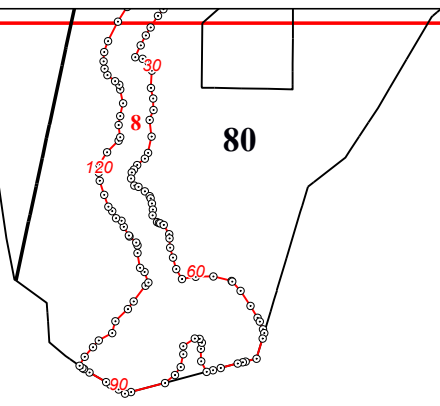
18

72

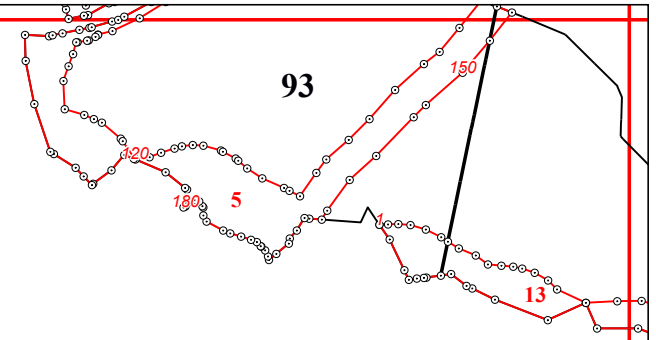
73



19 79



21



22

94

